



AIA Minnesota

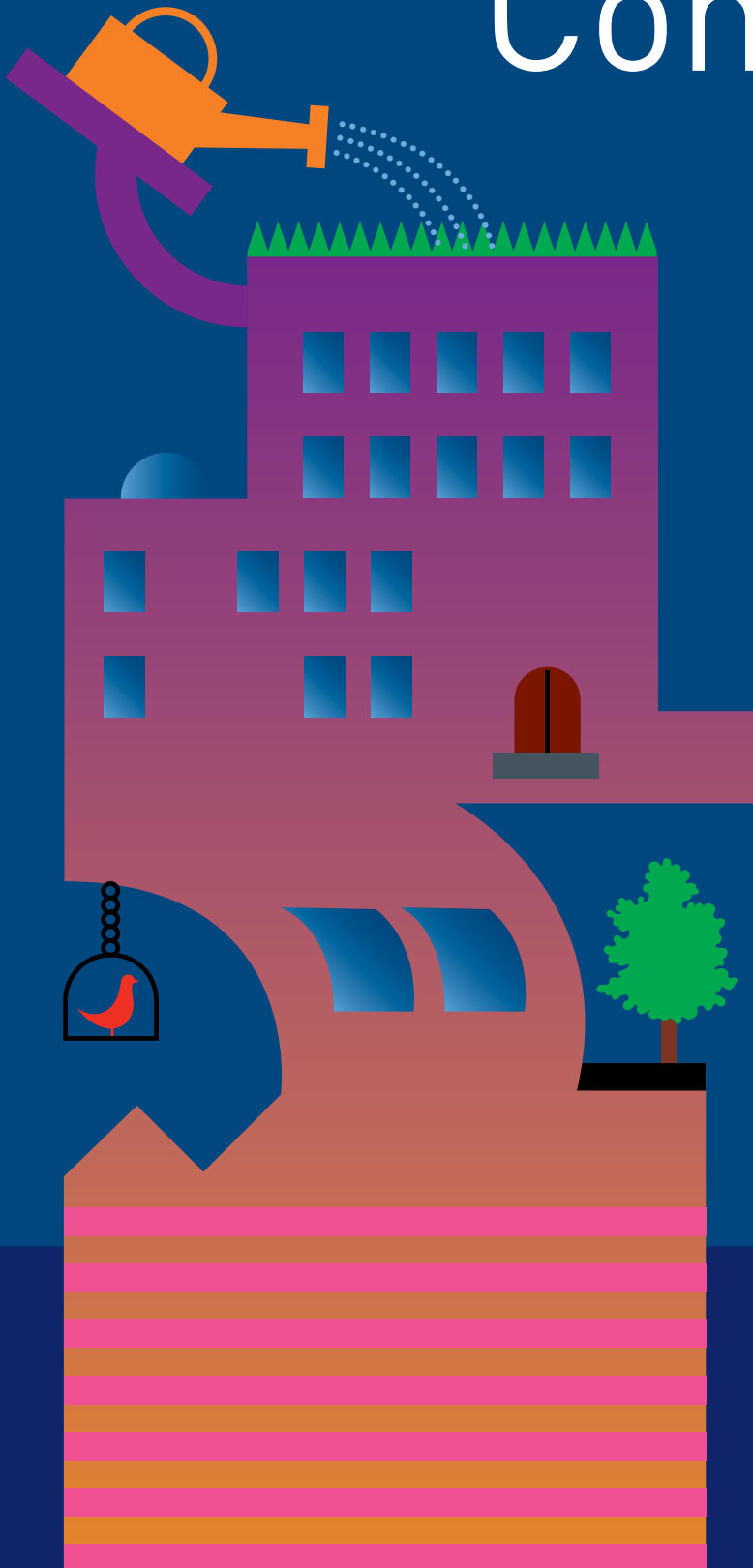
A Society of The American Institute of Architects

Beyond Convention

76th Annual Convention & Exposition

November 2, 3, 4, 5, 2010

Minneapolis Convention Center



Partnering with
The AIA Interfaith Forum on Religion,
Art, and Architecture
and
The AIA Practice Management
Knowledge Community



Beyond Convention

The architectural profession continues to feel heightened pressure to answer new challenges we're faced with in the current economic climate. The profession needs to respond in an informed, collective and positive way to remain relevant and find new growth and opportunities that go beyond anything we've done in the past.

Research and an accurate understanding of where the profession is at is critical. We've taken steps in this past year to assure we can measure the current state of our architectural firms in Minnesota. We've asked questions about firm workflow, structure, outsourcing, key markets, skill sets, technology and more. Armed with this information, we've factored in the economic realities of where we stand today. Together, we can use this information to feel confident in exploring new directions for the profession that go beyond what we've previously considered.

The convention this year will challenge architects to think about core competencies. What is it that firms want to do? What roles should architects be reclaiming? What skill sets should be built within firms? How do we want the public to perceive architects? We invite you to join us as we explore these answers and more as we go beyond convention at our 76th annual convention.



Rich Varda, FAIA, ASLA
President

Michelle Mongeon Allen, AIA, LEED AP
Convention Chair



Online Convention Registration

Quick, easy and secure! Register online for the Convention at AIA Minnesota's website, www.aia-mn.org. Online registration features include:

- Instant confirmation of all your chosen programs
- Convenient and secure payment with your credit card
- Immediate receipt for company reimbursement

Some programs fill quickly; closed seminars that have reached capacity will be listed on the website. To attend your first choice of programs, register online today!

Continuing Education

AIA Minnesota is offering Continuing Education credit for programs at the Convention. All credits listed are pending AIA approval. Both Health Safety Welfare (HSW) credits as well as AIA's new Sustainable Design (SD) credits are offered. According to our review, Convention programs marked as HSW will be accepted for Minnesota's CE requirement for licensing. Take advantage of this economical and efficient way to get credit for your AIA and State of Minnesota licensing CE requirements. Verification forms will be available at the Convention Registration Desk.

IDP Training Hours

Interns going through IDP can receive Training Hours for attending Convention programs. AIA's Learning Units (LUs) are now equivalent to IDP's Training Hours. For example, Event 1 at the Convention offers 2.75 LUs which would translate to 2.75 Training Hours for IDP interns.

Who Should Attend

- Architects
- Preservationists
- Graphic Designers
- Specifiers
- Construction Managers
- Marketing Professionals
- Engineers
- Planners
- Administrators
- Landscape Architects
- Contractors
- Draftspersons
- Interior Designers
- Developers
- CAD Operators
- Facility Managers
- Industrial Designers
- Interns/ Students

Member rates for seminars apply to members of the following organizations: AIA, ACEC, AGC, AIGA, APA, ASID, ASLA, AWI, CMA, CSI, IFMA, IFRAA, IIDA, IMI, MSPE, PAM, PMKC, SAH, SDA, SLUC, SMPS, ULI, USGBC

When

- November 2, 3, 4, 5, 2010
- Tuesday, Wednesday, Thursday, Friday
- **Exhibit Hall open on Tuesday, Wednesday and Thursday**
- Continuing Education all four days
- Awards Celebration and the 2010 Gold Medal Presentation, Friday, November 19, 2010 at the Minnesota History Center

Exhibit Hall Hours

- Tuesday, November 2 4:30 pm – 7:00 pm
- Wednesday, November 3 11:15 am – 2:30 pm and 3:45 pm – 6:00 pm
- Thursday, November 4 11:30 am – 2:00 pm
- **NO EXHIBIT HALL HOURS ON FRIDAY, NOVEMBER 5**
- Everyone welcome during each time period — free admittance — bring clients, colleagues, family, and friends.
- AIA Minneapolis is providing \$5 food coupons for those who registered for Packages 1, 2 or 3, to be used in the Exhibit Hall for lunch on Wednesday or Thursday.
- Fun, food, entertainment!

Special Exhibits & Fun Things to See & Do

- Buy a Raffle ticket at the Minnesota Architectural Foundation booth
- Play Nintendo Wii or Ping Pong in our Activities Lounges
- Behold the 2009 AIA Minnesota Honor Awards
- AIA Minnesota's 25 Year Award Recipient
- A special exhibit of AIA Minnesota's Louis Lundgren Award
- Visit the U of M College of Design Exhibit
- The Exhibit Hall — an education in itself!
- Booth Sleuths! Play to win Prizes!
- Citizen Architect volunteer opportunities located in each Activity Lounge
- Food, Socializing...and MORE!

Book Signings at the Convention

Books will be on sale throughout the four days of the Convention.

- *Drawing Shortcuts: Developing Quick Drawing Skills Using Today's Technology* signed by author Jim Leggitt, FAIA (Event 2)
- *The Prospector: A Guide for Developing Clients and Winning Work in a Competitive Environment* signed by author Karen Compton (Event 25)
- *Houses of God: Religious Architecture for a New Millennium* signed by author Michael J. Crosbie, PhD, AIA (Event 32)
- *Visual Theology* signed by author Wilson Yates, Ph.D. (Event 32)
- *The Architect's Guide to Small Firm Management* signed by author Rena M. Klein, FAIA (Event 34)
- *God's House is Our House: Re-Imagining the Environment for Worship* signed by author Richard Vosko, Hon. AIA (Event 39)

Hotel lodging

A block of rooms have been reserved for AIA Minnesota Convention attendees at the following hotels:

The Hilton Hotel

1001 Marquette Avenue, Minneapolis
\$110 single/double through October 11
1-800-HILTONS; 612-376-1000
www.aia-mn.org/convhotel

Millennium Hotel Minneapolis

1313 Nicollet Mall, Minneapolis
\$99 single/double through October 13
1-800-522-8856; 612-332-6000
www.aia-mn.org/convhotel

Convention Registration Cancellation/Refund Policy:

Cancellation requests must be received in writing on or before October 26, 2010. Please e-mail or fax your request to: allardyce@aia-mn.org; fax: 612-338-7981. There is a \$50 cancellation fee. Refunds (minus the cancellation fee) will be processed via your method of payment. No refunds will be offered after October 26, 2010. Questions? Contact Amber at AIA Minnesota, 612-338-6763 or by e-mail at allardyce@aia-mn.org. Thank You!



THE AMERICAN INSTITUTE OF ARCHITECTS

Interfaith Forum on Religion, Art, and Architecture

IFRAA Convention Events

- Wednesday — Keynote Address, Event 28
- Thursday — Programs — Events 32, 39, 43 and 46
Basilica Dinner, Event 48
- Friday — Tour, Event 49

The Interfaith Forum on Religion Art and Architecture, an AIA Knowledge Community (IFRAA), in conjunction with AIA Minnesota is proud to present the **Artful Presence Conference** concurrent with the AIA Minnesota annual convention. This Conference within the Convention, will explore the close interconnection of Art and Architecture and the technologies that allow this to happen. 12 speakers from across the country will combine their insights into a day and a half long discussion. The sessions are titled; *The Artful Presence*; *The Marriage of Tradition and Innovation in Worship*; *The Light of Worship*; and *The Sound of Worship*. All will build on the theme of Beyond Convention by briefly exploring the past while anticipating future change and challenge. The Artful Presence Conference will conclude with 2 special activities that celebrate the tremendous impact that the Minnesota region has had in the advancement of religious architecture. Artists, craftsman, clergy, church committees, specialized consultants, and architects will all join in this broad presentation and invaluable discussion.



Richard Vosko,
Hon. AIA
2010 IFRAA Chair



Craig Rafferty, FAIA
2010 IFRAA
Conference Host



THE AMERICAN INSTITUTE OF ARCHITECTS

Practice Management Knowledge Committee

PMKC Convention Events

- Wednesday — Programs — Events 14, 15, 19, 20, 25, 26
- Thursday — PMKC Roundtable Discussion, Event 29 (free)
Programs — Events 34, 38, 42, 45

AIA's Practice Management Knowledge Community (PMKC) is proud to be collaborating with AIA Minnesota to bring you a diverse and inspiring program that will give architects new insights, practical knowledge and useful practice tools. As part of PMKC's mission — to discover, generate, organize, and share insights, resources, and tools that enable architecture firms to practice more effectively — we have attracted some of the nation's best speakers to present a series of seminars on marketing, strategic planning, collaboration, leadership, and IDP. And be sure not to miss our Practice Management Roundtable, hosted by the 2010 PMKC Advisory Group, for an exciting exchange of practice insights.



Michael Strogoff, FAIA
PMKC Convention
Co-Chair



Scott A. Kuehn, AIA
PMKC Convention
Co-Chair

Convention Kicks Off with XL Programs and More

This year, we're once again kicking off the Convention with XL programs on Tuesday (Events 1, 2, and 3). These ExtraLong sessions have been enthusiastically received in the past and we're sure this year will be no different. XL programs allow presenters and attendees to dig deeper into content than usual.

But knowing that 3-hour programs are not for everyone, at the same time we offer the option to choose to attend the more usual 75-minute and 90-minute programs (Event 4, 5, 6 and 7).

Choose what works best for you. Sign up now.

Tuesday, November 2

Event 1

9:00 am – 12:00 noon

ARE Review: Programming, Planning & Practice

Co-sponsored by the AIA Minnesota Intern Development Program Committee

This program is a review course for those preparing to take the Architectural Registration Exam. The program is designed to introduce and prepare ARE candidates for the ARE 4.0 division entitled "Programming, Planning & Practice". The course will review the four content areas of Programming & Analysis; Environmental, Social & Economic Issues; Codes and Regulations and Project & Practice Management. The vignette, "Site Zoning" will also be thoroughly reviewed. **Michael Meehan, AIA, LEED AP**, is an architect with BWBR Architects in St. Paul. Currently, he is the Professional Development Manager at BWBR. His work focuses on continuing education, aligning project assignments with individual career goals, and employee evaluation. Meehan's professional interests include Integrated Project Delivery, technology, and mentoring. Additionally, Meehan is active with intern and young architect issues.

Rachel Riopel, AIA, LEED AP, is a Project Architect with HDR Architecture in St. Paul. Professionally, her focus is on process development and methodologies for project execution using BIM technology. Having been recently registered, she has been involved with the AIA's IDP Committee and is now working with the Emerging Professionals Committee to promote professional development and registration in the state of Minnesota.

Event 2

9:00 am – 12:00 noon

2D/3D Visualization Workshop for Architects and Designers

2.75 LU Hours

Developing ideas with 2D and 3D tools is vital for successful communication between architects, planners and clients. This 3-hour session will consist of a 45-minute overview of drawing and visualization, followed by 2-hours of hands-on drawing exercises. Participants will learn cutting edge hand drawn and computer generated visualization tools enabling designers to retool themselves in the current economic climate regardless of experience and skill level. Participants will generate "hands-on" exercises reflecting three distinct categories of design concept visualization: 1) new trends in hand drawn sketches, 3D Google SketchUp modeling, SU Podium and new digital tools for developing quickly generated presentations, 2) the "Overlay and Trace" method of drawing, and 3) the "Simple Composite Method" of Drawing. Participants will need to provide some of their own supplies: markers, colored pencils, trace. Details will be sent to all program registrants.

Jim Leggett, FAIA, Principal of LEGGITT STUDIO LLC in Denver, is an architect, urban planner, and professional illustrator. He has conducted numerous drawing seminars and workshops for architects throughout North America. His teaching style and enthusiasm for drawing has consistently been rated #1 at national conventions. Leggett writes about the subject of drawing and visualization twice weekly on his blog and maintains a strong design presence on Facebook and Twitter.

A booksigning for Jim Leggett's *Drawing Shortcuts: Developing Quick Drawing Skills Using Today's Technology* is scheduled to immediately follow this program.

Event 3

9:00 am – 12:00 noon

Sustainability, Efficiency and Honey Bees: Old Lessons, New Solutions

2.75 HSW/SD LU Hours

Co-sponsored by the AIA Minnesota Building Enclosures Council

Sustainability goals have caused a necessary reevaluation of how we ensure that delivered building performance achieves the design intent.



Tuesday, November 2

Too often award winning “green” projects fail to deliver fundamental architectural imperatives — from basic protection against the elements to healthy human environments. In this presentation we will revisit the concept of sustainability and the necessary challenges and conflicts created by our differing definitions. We will challenge the notion of comparative ratings for defining what constitutes a sustainable building product and a sustainable project. The session will examine prime examples from nature to perhaps reshape our expectations of performance, our willingness to work collaboratively and redefine our image of sustainability. This program will present lessons learned through examples relevant to Minnesota although most metrics are broadly applicable in every climate zone.

R. Christopher Mathis is president of Mathis Consulting Company (MC2). MC2 provides strategic support services from trend analysis to code assessment to regulatory positioning. Their efforts in helping draft the IgCC, ASHRAE 90.1 and others have given them a unique regulatory perspective combined with a somewhat sober in-the-trenches view of the challenges faced by architects, specifiers and others. Mathis has developed some unique and powerful comparisons quantifying the value of high performance buildings. Mathis is an active participant in standards and code development at ASHRAE, NFRC, ASTM and the ICC; selected four times to serve on ICC’s International Energy Conservation Code Committee; and is a member of the Board of Directors of the Building Enclosure Technology and Environment Council.

Event 4

9:00 am – 10:30 am

The 2010 FGI Acoustical Guidelines for Healthcare Facilities

HSW Health Safety Welfare 1.25 HSW LU Hours
Acoustics and noise management play an integral role in providing an optimum care environment for patients and staff of healthcare facilities. The Facilities Guidelines Institute (FGI) has released new guidelines that incorporate many acoustical design considerations as part of the bigger picture of the well-designed healing environment. This program will highlight these guidelines and review how they affect the work of the healthcare facility design professional. The program will explore specific design strategies to mitigate acoustic issues in healthcare facilities.

Elliott Dick is an Acoustics and Noise Technician for HDR Inc. in Minneapolis. His consulting experience includes building noise from HVAC, mechanical equipment isolation, and room acoustics for performance and voice reinforcement systems as well as environmental noise, community noise regulation and noise impact assessment. Dick is experienced at planning and performing standardized and analytical measurement. He is knowledgeable in national and international testing standards and specifications and is proficient in a wide variety of instrumentation and analyzers.

Kent Peterson is an Acoustics Project Manager for HDR Inc. in Minneapolis. He has more than 21 years of experience in the audio and acoustics industry, ranging from recording studio management and engineering to industrial intercom systems design and high-performance audio system design specification and installation. Peterson is a specialist in indoor and outdoor acoustics, noise measurement, and system installation and commissioning, and is an expert in Enhanced Acoustics Simulator for Engineers (EASE) modeling.

Gina Ramirez is an Acoustical Engineer for HDR Inc. in Minneapolis. She has a wide range of experience in the areas of architectural acoustics and environmental noise. She specializes in room acoustics, HVAC and mechanical systems noise control, acoustical isolation, and auralization techniques. Ramirez is a specialist in noise measurement, acoustical testing and acoustical data analysis and is proficient in numerous modeling techniques and programs.

Event 5

9:00 am – 10:30 am

Designing Disaster Resistant Affordable Housing

HSW Health Safety Welfare 1.25 HSW LU Hours
This session will examine and discuss design and construction strategies resulting in affordable housing that is disaster resistant. Improved design and construction will provide improved safety for the homeowner, reduce disaster damage, and create a smaller environmental footprint. This presentation will look at homes built following Hurricane Katrina to identify approaches and opportunities all designers and planners can integrate into their communities. The program will also address strategies applicable to areas outside hurricane areas.

Dana Bres is a Research Engineer in the Affordable Housing Research and Technology Division of HUD’s Office of Policy Development and Research. He is currently directing a variety of construction, planning and environmental research projects for HUD, including evaluations of the efficacy of energy conservation efforts in America’s public housing stock. He has been actively involved in HUD’s response to natural disasters. He is leading HUD’s evaluation of the FEMA Alternative Housing Pilot Program. His experience includes facili-

ties management, environmental planning and remediation, lead-based paint hazard reduction, and construction management.

Event 6

10:45 am – 12:00 noon

Seven Critical Considerations for Wayfinding Design

HSW Health Safety Welfare 1.0 HSW LU Hours
Well thought out wayfinding design is important to the accessibility and successful use of buildings yet, too frequently, components that contribute to better wayfinding design are an afterthought in the design process. This session includes key questions about wayfinding that architects need to ask their clients before starting any project. The presentation will focus on seven important ways that design professionals can improve wayfinding design, including the access to wayfinding information, and incorporates discussion of signage, landmarks, spatial organization, association cues, maps and directories, lighting, color, as well as information on sensory elements and the role they play in wayfinding.
Patricia Salmi, Ph.D. has a unique academic and experiential background in commercial design and in working with people with disabilities of all kinds. Her original, award-winning and ground-breaking research in wayfinding for people with intellectual and developmental disabilities has made her a sought after national speaker and published author on the topic of universally designed, inclusive and accessible wayfinding for everyone.

Event 7

10:45 am – 12:00 noon

The Challenge to Address Humanitarian Issues Through Design Solutions

LU Hours 1.0 LU Hours
What do you know about the issues of homelessness facing our community today? How can architects be engaged in the solutions? Architecture for Humanity (AFH) is one option that has been chosen by the speakers of this program. AFH Minneapolis Saint Paul began in 2005 and since then the Chapter has completed over a dozen projects. This session will focus on AFH MSP’s first design-build project, the Twin Cities Homeless Locker Project, which addresses the needs of homeless individuals to have a secure storage location for personal belongings. Learn about the strategies used for this design-build project and hear how AFH MSP meets the challenges of operating locally and working globally to address humanitarian issues through design solutions.

Tu-Anh Bui, Assoc. AIA, LEED AP is a designer at LHB, Inc in Minneapolis. Her focus is on designing and developing sustainable, affordable homes in Minnesota. Bui has participated in AIA Minnesota’s Search for Shelter charrette program since she was a student. In 2005 she became co-chair of the AIA Minnesota Housing Advocacy Committee, which organizes the annual Search for Shelter Charrette. Through the Minnesota chapter of AFH, Bui has helped design a community building in Sri Lanka, a school in Uganda, and the homeless lockers in Minneapolis.
Maureen Colburn, AIA, is a Project Manager with LHB, Inc. in Minneapolis. She co-founded AFH MSP in February 2005 because of her passion for design as a means to help people. Her design philosophy is focused on creating sustainable affordable homes for all. In addition to her volunteer work, Colburn feels lucky to be able to work almost exclusively on supportive housing projects for LHB. Colburn is a past Chair of the AIA Minnesota Committee on the Environment.

Michael Ellis is an entrepreneur, cabinetmaker and builder. He loves a good cross-cultural experience that can challenge life assumptions, and has done construction and language learning in 38 countries! Most recently he was with Doctors Without Borders in Chad, Africa, managing the logistics for a 110-bed hospital. One of his primary tasks in Chad was to design a TB treatment center alongside local and international staff members. AFH’s unique stance as a development organization that builds on local knowledge and needs attracted him to work with them.

Jeffrey Swainhart, LEED BD+C + Homes, is a freelance construction professional working in Minneapolis. His involvement in humanitarian architecture began as a founding member of the Minnesota chapter of AFH in 2005. Swainhart looks at humanitarian design as an opportunity to give something back to his community and to the world.

Event 8 — Member Congress

12:15 pm – 2:45 pm

Member Congress and Lunch

Keynote Address — Current Perspectives and the Future of the Profession

Clark D. Manus, FAIA, First Vice President will deliver the keynote address for this year’s Member Congress presenting his perspective on the future of the profession and how architects and the AIA can be prepared for upcoming challenges. Manus will become 2011 National AIA President. As AIA Vice President, Manus facilitated the development of a highly successful advocacy portfolio to ensure strategic thinking as the basis for action on policies. As the First Vice President-Elect, he co-chaired the



photo: © 2009 dceddo

AIA/USGBC Task Force and helped guide the comprehensive development of the AIA's 2010–2015 Strategic Plan. Manus is the CEO of Heller Manus Architects. He is an architect and urban/environmental designer, whose nearly 30-year career has influenced the character of San Francisco's building environment. He is widely recognized for his expertise in complex urban, mixed-use buildings and master planning projects, especially in highly difficult approval environments.

AIA Minnesota President Rich Varda, FAIA, will provide highlights from 2010. He will include a report from the Carlson School of Management (U of M) that provided the research that shaped the recommendations for the Recovery Task Force. He will focus on the state of the membership and the value that AIA Minnesota has provided during 2010. President-elect Steve Fiskum, AIA will present his ideas for future growth and opportunity for AIA Minnesota members. The election of officers for 2011 will be conducted. Presidential Citations for exceptional work by our AIA Minnesota members will be presented. **Rich Varda, FAIA** is Senior Vice President,

Store Design for Target and is 2010 President of AIA Minnesota.

Event 9 — Keynote Address

3:00 pm – 4:30 pm

Out of Practice

1.25 LU Hours

SHoP Architects, founded by its five principals in 1996, has been a leader in the transformation of intricate theoretical design into easily understood construction models by rethinking architectural practice. This think tank has pushed the designer's realm past form making and into software design, branding, real estate development, construction, and the co-development of new sustainable technologies. As both practitioners and educators, their commitment to challenging the entire process of building has proven to a generation of architects that beauty and technological proficiency are not mutually exclusive. The firm looks at an entire project and considers the site, the cultural and economic environment, a client's physical needs and budget constraints, as well as construction techniques, branding, marketing, and post-occupancy issues. They use evolving computer-aided design technologies not only to produce innovative architectural forms but to streamline the design and construction process and create new efficiencies and cost-savings. Attend this keynote address and see how this firm combines design, finance, and technology in innovative ways to create a new model for the profession.



Coren Sharples, AIA, is a Founding Principal of SHoP Architects and SHoP Construction, established in 1996 and 2007, respectively. SHoP's current work includes a two-mile esplanade and park for The City of New York along East River Waterfront, projects for the Fashion Institute of Technology and Goldman Sachs, both in Manhattan, and for Google in Mountain View, CA. In addition to the partners, the office is currently comprised of 40 staff members and is located near City Hall in Lower Manhattan. SHoP has won numerous awards, including the 2009 National Design Award for Architecture Design by Smithsonian's Cooper-Hewitt National Design Museum and the 2008 SBIC Beyond Green High Performance Building Award. SHoP's work has been published and exhibited internationally, and is in the permanent collection of the Museum of Modern Art.



Paolo Tombesi will serve as a Respondent to this keynote address and provide commentary on trends and models that he has seen internationally. Trained as an architect in Italy, Tombesi is Chair of Construction, in the Faculty of Architecture Building & Planning at the University of Melbourne. A leading authority on the industrial organization of architectural practice and the analysis of the building design process, he employs industrial economics, labor theory and regional development models to examine the relationship between design, technological innovation, knowledge production and professional markets.

Event 10 — Exhibit Hall — Free

4:30 pm – 7:00 pm

Opening Night Party

This kickoff party is a fun way to start off this eventful week! Join AIA Minnesota President, Rich Varda, FAIA and Convention Committee Chair Michelle Allen, AIA for the grand opening of our 76th Annual Convention! An exciting event is ahead with hors d'oeuvres, drinks and entertainment.

AIA Minnesota will host its first ever Ping Pong lounge open for all to play and a chance to battle your favorite architect or exhibitor! Returning this year is a Nintendo Wii Lounge, which will feature exciting games and fun. Join in to watch your favorite players or try a new game!

Be sure to stop by the Minnesota Architectural Foundation (MAF) Booth. Learn more about their efforts within the community and their scholarship programs. The MAF fundraiser is a raffle of several iPads. Buy a ticket or two and improve your chance to win.

Don't forget to play "Booth Sleuths" to win marvelous prizes. Grab your card at the registration desk and collect six signatures from exhibitors to be eligible to win prizes. Drawings will take place at the end of each Exhibit Hall session and you must be present to win your prize.

Wednesday, November 3

Event 11

8:00 am – 10:00 am

Architect-Led Design-Build:

Integrated Project Delivery with the Architect in Charge

1.75 LU Hours

Design-Build can be a form of Integrated Project Delivery, but it often is unpopular because architects have little control of design-build teams. This presentation describes an approach in which architects assume the lead in the Integrated Delivery model. It explains a step-by-step business plan that teaches architects how to be the lead member of a design-build team with a general contractor for private sector projects. It discusses the advantages and risks of such a structure and how to market it to owners and contractors.

Mark C. Friedlander is the Co-Chair and a founding partner of the Construction Law Group of the law firm of Schiff Hardin LLP in Chicago. Since 1985 he has been an adjunct professor at the University of Illinois at Chicago School of Architecture. Recently, he has concentrated his practice in alternative project delivery methods, particularly design-build, and is credited with having developed and popularized a new business structure for design-build construction projects that allows architects to lead the design-build team.

Event 12

8:30 am – 10:00 am

Lessons from the edge: Rebuilding Detroit and Other Older Industrial Cities

1.25 LU Hours

There is no city in America that has been as devastated by disinvestment in the urban core, economic restructuring, and the collapse of the housing and financial markets as Detroit. In the popular press, Detroit is synonymous with urban decline. And yet, it has embarked on an unprecedented, bold effort to re-imagine itself in every dimension of municipal life. Re-purposing blighted and abandoned land for urban agriculture, parks, open spaces, and other uses. Stabilizing miles and miles of threatened, but solid, middle class housing. Concentrating transit, commercial, and new residential development along the City's central artery. This presentation will detail how philanthropy is working with the City of Detroit to confront seemingly intractable challenges with new tools, partners, policies, and practices.

Rip Rapson, attorney and expert in urban policy, is president and CEO of The Kresge Foundation, a \$3.1 billion national, private foundation based in metropolitan Detroit. Rapson is leading the 86-year-old philanthropy in a multi-year transition to expand and recalibrate its grantmaking. Six strategically focused programs — arts and culture, community development, education, environment, health, and human services — seek to influence the quality of life for those living in low-income and underserved communities.

Event 13

8:30 am – 10:00 am

An Exploration of Emerging Building Technologies for On-site Energy

1.25 HSW/SD LU Hours

HSW Health Safety Welfare
Seeking to push the boundaries of environmental performance in urban building systems, the Center for Architecture Science and Ecology (CASE) unites advanced architectural and engineering practices with scientific research by bringing together design professionals, manufacturers, research faculty, and advanced students dedicated to the exploration of emerging building technologies. This program will explore their work in the area of emerging strategies and technologies for on-site clean energy capture, transfer storage and redistribution, particularly within the building envelope. The presentation will compare and contrast these emerging, paradigm-shifting strategies to the current state-of-the-art methods for metabolizing ambient energy flows at the building envelope and within interior building zones.

Anna Helen Dyson is the Director of the Center for Architecture Science and Ecology (CASE), an entity spanning several institutional collaborators, and co-hosted by Skidmore Owings and Merrill (SOM) and Rensselaer Polytechnic Institute. Dyson is currently directing interdisciplinary research funded by the U.S. Department of Energy, the New York State Energy Research and Development Authority, and the New York State Foundation for Science, Technology and Innovation to develop building systems that integrate applications of emerging technology from diverse research fields.

Wednesday, November 3

Event 14 — A PMKC Program

8:30 am to 10:00 am

Maximizing Your Business Development ROI

1.25 LU Hours

Co-sponsored by the AIA Practice Management Knowledge Community

Given the challenging economic landscape and fierce competition, it's imperative that firms engage as many staff as possible in Business Development (BD). Through industry case studies, anecdotes and sharing of best practices, this program will show attendees how to establish and inculcate a strong BD culture, from the top down, to maximize a firm's Return-on-Investment (ROI). This culture should encourage company-wide contributions to the BD process and identify a variety of ways in which staff can participate, each suited to an individual's personality, skills, and comfort level.

Richard Friedman, President of Friedman & Partners, has worked in and consulted to the A/E/C and environmental industries for nearly 20 years. He has extensive experience in strategic market planning, market research and analysis, PR and positioning strategy, and business development consulting and training for technical and marketing professionals. Friedman has conducted a number of seminars and workshops for AIA, SMPS, ACEC, AGC, NSPE, and "Build Boston." He has been published in AIA's *Practice Management Digest*, SMPS' *Marketer*, PSMJ's *A/E Rainmaker* newsletter, NSPE's *PE* magazine, and ACEC's *Engineering Inc.* magazine.

Event 15 — A PMKC Program

8:30 am to 10:00 am

(Re)Learning to Collaborate

1.25 LU Hours

Co-sponsored by the AIA Practice Management Knowledge Community

Collaboration used to be simple. We knew how to do it as children. Have we now made it harder than it needs to be? Advances in technology seem to have made finding, connecting, and leading people with a common set of challenges easier than ever before. Is collaborating always desirable? Attend this program for an informative, entertaining and contrarian tour through social media, knowledge management, IPD, and collaboration.

Randy Deutsch, AIA, LEED AP, is a lead design architect focusing on and dedicated to large, complex sustainable projects for Deutsch Insights, Inc. in Chicago. Deutsch is an adjunct professor leading graduate-level building science, design studio and professional practice courses. He is a frequent blogger and author of *BIM + Integrated Design* (Wiley, 2011) a professional thought and practice leader, IPD facilitator, speaker, mentor and recipient of the AIA Young Architect Award.

Laurie Dreyer is currently a Principal and the Director of Human Resources at Anshen+Allen. She has provided leadership to firms in the A/E industry for over 25 years. Prior to joining Anshen+Allen, Dreyer led the Human Resources and Organizational Development efforts of leading firms in the industry such as PSOMAS, Gensler, and Ratcliff. She is a frequent speaker for industry organizations such as the AIA, ACEC Senior Executives Institute, AEBL and SMPS.

Christopher Parsons is President and CEO of Knowledge Architecture in San Francisco. Parsons has been a technology leader in the AEC industry since 2002, serving as the Chief Information Officer for Steinberg Architects and the Information Technology Director for SMWM (now Perkins+Will). He has spoken and written for several industry groups including AEBL, ZweigWhite, the AEC IT Leaders Roundtable, and *LINE Magazine*.

Event 16

10:15 am – 11:30 am

Innovation in Architecture: Design and Manufacturing and IPD

1.0 LU Hours

This program will describe a new framework of collaborations between design and manufacturing and the benefits gained through an Integrated Project Delivery process. It will define its value to architecture and manufacturing and will describe how a manufacturer, using IPD and lean construction processes, has been able to work with architects to achieve unprecedented innovation in materials and construction methods. Projects will be showcased clearly showing the process which fundamentally closes the gap between design and building with an approach that reinforces, rather than dilutes design ideas.

Ruben Suarez has over 20 years of experience with a professional focus on interdisciplinary relationships and how different industries can work together more efficiently and achieve higher levels of innovation. He has been invited to lecture at various universities around the world and has participated in symposiums describing innovative ideas of collaboration. While at 3form (2004) he created an architectural division that was instrumental in the development of a new material process to fabricate translucent real wood used to clad the interior of the Alice Tully Hall at the Lincoln Center in NY in collaboration with Diller & Scofidio + Renfro Architects and FX FOWLE Architects.

Event 17

10:15 am – 11:30 am

Creating a Market-rate Zero Carbon Office Building

1.0 HSW/SD LU Hours

Explore the challenges and opportunities of a zero emissions "end game" and see how design decisions change at each stage of design when the goal is pulled toward Zero Net Emissions rather than Zero Net Energy. Three firms, in architecture, real-estate development and energy, collaborated to test the feasibility of a market-rate, Zero Net Emissions, speculative office building in the central United States. Comparative simulations, for both energy and economic performance, were used in Predesign and every subsequent design phase. The presentation illustrates what worked and why and explains why zero emissions buildings are economically viable but require a design rigor that is yet uncommon in the building industry.

Chris Baker, AIA, LEED AP, a project manager and energy analyst at The Weidt Group, focuses on providing data and analysis to help design teams understand the energy and environmental implications of various design options. Since joining The Weidt Group in 2006, Baker has consulted on projects totaling more than 3.2 million square feet, including two LEED Certified projects and over two dozen LEED Registered projects.

David Ejjadi, FAIA, LEED AP, a Principal at The Weidt Group with 30 years of experience in environmentally-appropriate design, leads the Energy Department's consulting services for high-performance buildings. Under his direction, Energy Design Assistance programs have influenced over 130 million square feet of construction, which reduces air pollution by over 708 Kilotons annually. He is Chair of the Board of Directors for the Midwest Energy Efficiency Alliance and has served on the boards of the USGBC-Minnesota Chapter and the IESNA Committee for Daylighting Metrics. He is a frequent, nationally-recognized presenter.

Vinay Ghatti, LEED AP, is a daylighting, energy, and sustainable design collaborator, providing design assistance and detailed project analysis. He received a Master of Science in Building Design, specializing in Energy Performance and Climate Responsive Architecture, from Arizona State University in 2002 and a Bachelor of Architecture from Karnatak University Dharwad in 1997. Ghatti has presented at ASHRAE, ASES, and the New Mexico Solar Energy Association conferences.

Event 18 — Free

10:15 am – 11:30 am

Challenges and Opportunities for our Profession in a Recovering Economy

Co-sponsored by the AIA Minnesota Recovery Task Force

1.0 LU Hour

A panel from the AIA Minnesota Recovery Task Force will report on the state of our profession and opportunities for the future in a recovering economy. When will conditions improve, and in what sectors? What changes can we expect from globalization, new technologies, changed lending practices and competition for fee dollars? Results from research, surveys, the Town Hall Forum and a study by a Carlson School of Management team will be used to articulate the current economic situation in the design and construction industry, and to outline ideas for how architects, firms and the AIA can develop strategies that address future opportunities. Audience participation will be sought in prioritizing next action steps.

Stephen Fiskum, AIA is Chief Operating Officer of Hammel Green and Abrahamson, Inc. (HGA). HGA is a 550-person architectural/engineering firm focusing its practice in the areas of Arts, Community & Education, Public/Corporate, and Healthcare. Established in 1953, HGA believes in a philosophy of broad-based employee ownership and a highly collaborative and creative design environment. Fiskum is AIA Minnesota President-Elect.

Jeffrey C. Frush, AIA, is a Principal, Vice President and Senior Project Director for Ellerbe Becket, Inc., an AECOM Company. Frush brings 38 years of experience devoted to the management, planning, design and execution of both domestic and international healthcare facilities. Some of his domestic clients have included: Henry Ford Health System; Indiana University Health System; Mayo Clinic; Northwestern Memorial Hospital in Chicago; Park Nicollet Medical Center; Sanford Health System; University of Minnesota Hospital and Clinics.

Rich Varda, FAIA, ASLA, Senior Vice President, Store Design, Target oversees an internal corporate team of 256 architects, engineers and interior designers responsible for maintaining the Target store prototypes and managing the design of new store and remodel projects. His work has been published in *Architecture*, *Architectural Record*, *The Wall Street Journal*, *World Architecture*, *Building Design and Construction* and other trade periodicals. Varda is currently President of AIA Minnesota.

Ann Voda, AIA, LEED AP, is a principal and president of the firm Bentz/Thompson/Rietow, Inc. BTR is a generalist design practice for many clients and project types, public and private, large and small. This variety of facility types includes new construction, renovation, interiors and adaptive reuse projects located in Minnesota, and the upper Midwest. Voda was recognized as a 2009 Women in Business Industry Leader by the *Minneapolis St. Paul Business Journal*.

Event 19 — A PMKC Program

10:15 am – 11:30 am

Taking Your Marketing Off-Road

1.0 LU Hours

Co-sponsored by the AIA Practice Management Knowledge Community

With a struggling economy and crowded marketplace, competition for new projects has become increasingly turbulent and architects are scrambling to make their voices heard in a noisy environment. "Taking Your Marketing Off-Road" guides attendees on how to be proactive in their promotional efforts and develop their "brand". The program will acquaint attendees with the short and long-term benefits of using new online communication tools; outline ways in which to become credible subject-matter experts in their respected specialties; and share networking ideas to create new referral sources. Architects, marketing directors, and others will discover how to create exciting directions for their own off-road marketing adventures.

Laura Davis, AIA, IFDA, is the Director of Marketing and a Principal at HPD Architecture, Dallas, Texas.

Larry Paschall, AIA, is a Project Architect and Principal at HPD Architecture and is responsible for day-to-day operations of the firm.

For the past two and a-half years, HPD partners have lived the experience of using alternate marketing to reach their current and potential clientele. They are the co-founders, co-hosts, and authors of the audio podcast *The Architecture Happy Hour*, an informal discussion about architecture for design professionals, clients, and architecture students. They also host *The Architecture Happy Hour* monthly networking events designed to bring together local design professionals and related industries.

Event 20 — A PMKC Program

10:15 am to 11:30 am

Growth by Hiring: happily ever after

1.0 LU Hours

Co-sponsored by the AIA Practice Management Knowledge Community

As our economy recovers and strategic hiring decisions get underway, firms need new strategies for smart growth. This program will present a step-by-step process of a highly effective integration model. Case studies will include an analysis of how the integration actually occurred, lessons learned and suggestions for how a similar growth strategy might be implemented with a strategic integration plan. This program will equip our industry leaders with an approach for successfully integrating new leaders into their practices. The integration model will also benefit those seeking employment and influence how they select a new employer.

Jacquie Damgaard, Ph.D., is the President and co-founder of Coaching Solutions International, Inc. (CSI), an Executive and Organizational Coaching firm. CSI clients come from industries including real estate development, architecture and interior design. Damgaard has a Ph.D. in psychology and is a graduate of Corporate Coach University, High Impact Team Coaching, and Coaching Exceptional Groups. She is certified in the delivery of assessments that facilitate Executive and Career Coaching.

Jan Legg, AIA, LEED AP, has worked for three of the top ten international architectural design firms including Gensler in 1997 in Detroit and most recently a partner in their Atlanta office. During a period of five years that she spent with the Tennessee Valley Authority (TVA), she became sensitized to the idea of the integration of new hires. In recent years Legg has focused on organizational development issues and specifically understanding the dynamics of the introduction of new leadership into an organization and how it can be accomplished with success.

Event 21 — Exhibit Hall — Free

11:15 am – 2:30 pm

Come meet all of our exhibitors as they share their new and innovative products with you. The Exhibit Hall is a great place to catch up with old clients, meet new faces and network. Enjoy lunch! If you've registered for Convention packages 1, 2 or 3, use your \$5.00 coupon for lunch in the Exhibit Hall, compliments of AIA Minneapolis.

Be sure to visit the Minnesota Architectural Foundation's (MAF) exhibit. Help support their scholarship programs through the Raffle and drawing for iPads.

Have questions about your membership? Visit the Member Services lounge where the Membership Committee can help answer your questions; or chat with representatives of AIA Minnesota's three Chapters. Are you in transition with your job? Representatives of the Members in Transition group will be there, as well.

Don't forget to fill out your Booth Sleuth card and turn it in at the front of the Exhibit Hall. Chances are you'll win an exciting prize!

Event 22

2:30 pm – 4:00 pm

Manufacturing, Materials, and Making: Cases for the Midwest

1.25 LU Hours

This program will illustrate strategies for deploying digital technology in the service of making architecture through direct connection with industry partnerships. The presentation lays the historical groundwork that the Midwest has always been a place for innovation in industry, and that manufacturing and craft have historically found

root in this fertile region. Direct engagement with industry is essential to a new form of production in architecture, and through new methods of design and production that embrace advanced technologies in a globally competitive market, the Midwest is ripe to continue its tradition of making and craft from within our region. Research projects and regional cases studies will demonstrate a new information age ethic for "connecting globally, and making locally."

Kevin R. Klinger is Director of the Institute for Digital Fabrication at Ball State University, Associate Professor of Architecture, and Director of the Post-Professional Master of Architecture program in the College of Architecture and Planning. He has served as a two-term President (03-05) of the Association of Computer Aided Design in Architecture (ACADIA) an international organization devoted to studying the advances in architecture resulting from influences of digital technology. Klinger encourages explorations in digitally-driven design deploying techniques of digital fabrication.

Event 23

2:30 pm – 4:00 pm

Solid State Lighting – Perspectives on LEDs

1.25 HSW/SD LU Hours

This program will be delivered in four parts: An introduction to LED lighting, an exploration of the technology, applications for LED lighting, and the sustainability benefits of the technology. The panel will discuss specifying and applying LED technology and understanding the sustainability and lifecycle costs of LED. The program will also compare SSL (Solid-State Lighting) to traditional light sources and explain system components and applications.

Scott Anderson, JTH Lighting Alliance, has been helping local architects, engineers and interior designers with their lighting questions for more than 20 years. JTH Lighting Alliance is a lighting manufacturers' representative firm that works with many of the leading manufacturers in the industry including Artemide, Bega, Color Kinetics, Ledalite, Louis Poulsen and Tech Lighting. Anderson is a past president of the local Illuminating Engineering Society (IES)

Leigh Forrester, GE Lighting, works with architects, designers, end users and lighting designers/specifiers, using a consultative approach in the guidance and education of emerging solid state lighting technologies. Entrenched in being a steward to her clients' bottom line, she has helped companies save millions of energy and maintenance dollars while reducing their carbon footprint through energy saving conversions.

Ian Shaw, Philips Color Kinetics, has 12 years of industry experience and a passion for solid-state lighting. Shaw has evangelized the benefits of LEDs among the lighting design, engineering, contracting, and end user communities. Coming to the technology sector from a historic preservation background, he started his lighting career in street lighting initiatives within the city of St Paul and has consulted on projects by renowned architects such as Philip Johnson, Jean Nouvel, and Philippe Starck.

Event 24

2:30 pm – 4:00 pm

Composite Wood Products and The Toxic Substances Control Act

1.25 HSW LU Hours

This program will address new legislation passed by congress and signed into law by President Obama in July, 2010, the Amendment to The Toxic Substances Control Act, "Title VI: Formaldehyde Standards for Composite Wood Products". The program will also explore other current regulations/requirements related to emissions of formaldehyde in composite wood products, along with basic information about construction and adhesives. By the end of this session attendees will understand how to specify composite wood products to meet any of the current formaldehyde emission standards or "Green Building" programs.

Kay Stoebe, LEED AP BD+C, is Sustainable Product Brand Manager, for Metro Hardwoods, a division of Midwest Hardwoods Corporation. With more than 10 years of experience in the industry, Stoebe has acquired vast knowledge of composite wood products, from resin systems and wood fiber to manufacturing and related certifications. She has collaborated with members of the Forest Stewardship Council (FSC), and as a registered Subject Matter Expert for the USGBC she has contributed expertise to several ongoing wood related issues for the USGBC.

Event 25 — A PMKC Program

2:30 pm to 4:00 pm

Multi-Level Marketing: What other business models can teach us

1.25 LU Hours

Co-sponsored by the AIA Practice Management Knowledge Community

Many of us think of business development as a tightly controlled process within our firms. But, the truth is, multi-level marketing approaches have been shown to be far more effective. Multi-level marketing has a broad application in the architecture environment as we seek to identify new project opportunities, expand project and client intelligence and secure new work. In this session, learners will be introduced to fundamental concepts of multi-level marketing and how to apply best business and management practices to project managers, architects and

Wednesday, November 3

even non-design professionals such as interns and administrators.

Karen Compton is Principal of A3K Consulting, a California based business development and strategic planning firm specializing in the built environment. She has more than 14 years experience as a business development professional in the fields of architecture, engineering and construction. Her integrated approach to business development has resulted in revenue increases of as much as 20% for clients from local and national A & E firms, as well as general contractors and program managers.

A book signing for Karen Compton's *The Prospector: A Guide for Developing Clients and Winning Work in a Competitive Environment* is scheduled to immediately follow this program.

Event 26 — A PMKC Program

2:30 pm – 4:00 pm

Integrating Design Leadership and Project Management Yields

1.25 LU Hours

Co-sponsored by the AIA Practice Management Knowledge Community

Design leadership and project management are not natural allies; however, both are essential components of creating extraordinary work and delivering successful projects. Today's competitive market requires that we stop treating them as opposing forces and integrate them into a unified project delivery system. This program, premised on the belief that project management need not be an alien subject but rather part of the leadership process — one that simply meets another dimension of the design — will show how design professionals can integrate the creative spirit of design with the traditional project management activities.

Douglas R. Parker, AIA is Managing Principal of The Greenway Group, in Littleton, Colorado. He has a uniquely integrated understanding of business, firm operations, and design that makes him a recognized leader throughout the industry. He is the author of several tools, articles, and processes that bridge communications, provide role clarity, and leverage the value of design throughout the project delivery process. He has consulted with building product manufacturers and worked with Fortune 500 companies as well as with leading architecture and design firms.

Event 27 — Exhibit Hall — Free

3:45 pm – 6:00 pm

Looking for a new product for your next project? Or do you want to learn about new and innovative technology? Check out the Exhibit Hall to see the latest ideas and make a lasting connection. Show your appreciation to our exhibitors by stopping by to say hi!

Take a shot at a fun and exciting round of ping-pong with your friend, co-worker, or boss! Or try the latest exciting interactive game of Wii! While you are there, check out volunteer opportunities within your community.

Also, don't forget to play Booth Sleuths! Prizes will be given out at the end of each Exhibit Hall session, and you must be present to win! Grab a game card at the registration desk.

5:00 pm

An Invitation to All Greater Minnesota AIA Members

A Reception for all of our AIA Greater Minnesota members will be in the Member Services area of the Exhibit Hall. Please join us for refreshments and time to meet and greet one another. This event is jointly provided by AIA Minnesota and AIA Minneapolis.

Event 28 — An IFRAA Keynote Address

6:00 pm – 7:30 pm

Somewhere in Between: Spatial Awareness and Visual Imagination

1.25 LU Hours

Co-sponsored by the Interfaith Forum on Religion, Art and Architecture

Michael Rotondi has been practicing and teaching for many years and has been witness to evolving and devolving skills. Recently he was in conversation with colleagues whom he had collaborated with at SCI-ARC (all of whom also practice). They focused their discussion on what they believed the most fundamental skills were. The list they made fell into two broad categories, Spatial Awareness and Visual Imagination. When assessing their students' capacities in these two areas they asked the questions, "Do the students have a capacity to 'see' in their minds eye what is not present?" As a rule, the provisional conclusion has been that there

is a diminished capacity in these two areas. This keynote address will speak about the role spatial awareness and visual imagination play in the creative process, regardless of the tools used.

Michael Rotondi, FAIA is recognized as an innovative architect/educator. He has practiced and taught architecture for 30 years, based in Los Angeles, co-founding 2 international practices, first as a partner of Morphosis, (1975–1991) and RoTo Architects

(1991–present). His research and work as a trans-disciplinary educator-practitioner, has given him the insights that are essential to an open-minded approach to envisioning new directions, solving complex problems, working with a diversity of people in unique ways, many of whom are at the frontiers of their particular fields, and testing ideas in real time. Projects range from contemplative and cultural, to commercial and civic. Rotondi has worked with the Buddhist community in California to design The 100,000 Stupas site, nestled in the Santa Cruz Mountains in Central California at the Land of Medicine Buddha.

Among his many awards are the American Academy of Arts and Letters Award in Architecture, received in 1992, and the AIA/LA Gold Medal for his contributions as a Practitioner and Educator, received in 2009.



Thursday, November 4

Event 29 — A PMKC Discussion — Free

7:00 am – 8:15 am

Practice Management Roundtable Discussion

Co-sponsored by the AIA Practice Management Knowledge Community

Join AIA's Practice Management Knowledge Community's Advisory Group for a series of insightful presentations and a lively discussion about the future of professional practice. Share your perspectives, ask questions, listen to your peers.

Event 30

8:00 am – 10:00 am

Fabric Structures — Efficient and Sustainable Solutions

1.75 HSW LU Hours

Co-sponsored by the Industrial Fabrics Association International

This program will provide an overview of the use of fabric as a building material. The presentation will explain the history of fabric structures and describe the types of fabric structures and materials used. Considerations such as heat affects, light transmission, connections, insulation and sustainability, will also be covered. The presentation will feature specific projects in inclement weather, specifically in colder climates. Examples of regional projects and the advantages that fabric has over other building materials in these regions will be highlighted.

Steve Fredrickson is the US Market Manager for Architectural Fabrics for Ferrari Textiles in North America. He has been in the fabric structures industry for over 15 years. He is currently the Chairman for the Fabric Structures Association and has been a Board member since its inception in 2001.

Event 31

8:00 am – 10:00 am

Taking the Mystery and Pain out of "Openings" Coordination: Managing the Four Primary Elements

1.75 HSW LU Hours

This program will help break down the four primary elements related to openings: building and life-safety requirements; security and traffic control; accessibility and automatic door operation; and user function and building standards. The presentation will explain the priorities, sequencing, and methods of coordinating those elements in a team approach from the initial design concept, to the construction documents, and finally to construction administration.

Gerhard Guth, AIA, is a Senior Associate for HGA Architects & Engineers in Minneapolis. He has over 23 years in the architecture profession. During the last eight years, he has held the title of a Certified Building Official, therein offering code guidance specialization for all architectural and engineering staff, from schematic design through the construction administration phase. Guth is an ongoing member of the AIA Minnesota Building Code Committee, and currently serves as the appointed licensed architect on the Construction Codes Advisory Council to January of 2011.

John Wellvang is an "opening specialist" for HGA Architects & Engineers in Minneapolis. He has been involved in the door, frame, and hardware industry for over 20 years. Wellvang's experience includes consultations, specification preparations, and submittal reviews as well as having the unique opportunity to develop coordination processes with the key elements and players associated with openings — building & life-safety codes, security, accessibility and automatic door operators, user function & building standards, and architectural design — which result in more efficient methods and effective outcomes.



Event 32 — An IFRAA Program

8:00 am – 10:00 am

The Artful Presence

1.75 LU Hours

Co-sponsored by the Interfaith Forum on Religion, Art and Architecture

Each art form plays an active role within the cultural variations of worship space. Architecture and art coincide at this point, each dependent upon the other. This connection will be explored from three vantage points starting with a broad overview of the arts in worship, then a discussion of custom designed and crafted key appointments within an architectural setting, and closing with a discussion of an active worship community and its approach to incorporating the arts.

Michael J. Crosbie, Ph.D., AIA, is Editor-in-Chief of *Faith & Form* magazine, the quarterly interfaith journal on religion, art, and architecture. Under Crosbie's leadership the journal's focus has broadened to present a mix of articles that consider religious art and architecture from theoretical, practical, and newsworthy perspectives. Crosbie is the author of three best-selling books, published by Images Publishing Group. *Architecture for the Gods* (1999), *Architecture for the Gods, Book II* (2003), and *Houses of God: Religious Architecture for a New Millennium* (2006).

Johan Von Parys, Ph.D., is Director of Liturgy and Sacred Arts at the Basilica of St. Mary. Previously, he worked for the Notre Dame Center for Pastoral Liturgy. In addition to his work for the Basilica, he is Art Director for the Georgetown Center for Liturgy, Spirituality and the Arts producing an on-line resource about Liturgy, Art and Architecture called EnVisionChurch. Von Parys has accepted teaching appointments at St. John's University and gives workshops and consults with parishes throughout the country on a variety of topics relating to liturgy and the arts.

Wilson Yates, Ph.D., is president emeritus of the United Theological Seminary of the Twin Cities and currently senior editor of *ARTS Magazine* (Arts in Religion and Theological Studies). He has written extensively on the arts in theological education and co-edited *Arts, Theology, and the Church, New Intersections*, with Kimberly Vrudny (Pilgrim Press, 2005).

Richard Vosko, Hon. AIA, will moderate this program. Vosko is the 2010 chair of the Interfaith Forum on Religion, Art and Architecture (IFRAA).

Two book signings will take place immediately following this program:

Michael Crosbie will be available to sign *Houses of God: Religious Architecture for a New Millennium*. Wilson Yates will be available to sign *Visual Theology*.

Event 33

8:30 am – 10:00 am

A Passive House and LEED Approach to Net Zero: Bagley Classroom Building

1.25 HSW/SD LU Hours

HSW Health Safety Welfare The Bagley Classroom Building is a 2,000 GSF multi-purpose classroom and meeting space on the UMD campus. Systems and strategies used at the building include super-insulated envelope, calculated passive solar gains with Passive House analysis, heat recovery system, supplementary heating, continuous mechanical ventilation and automated natural ventilation system, photovoltaic power system, water conserving plumbing and composting system. This program will present the ideas for conservation based design, use of Passive House analysis, LEED Platinum standard, the construction process and monitoring strategies being used to achieve net zero energy performance.

Carly Coulson, AIA, LEED AP, Certified Passive House Consultant is the Principal and Owner of the architecture firm COULSON. Her firm is currently working on several single-family, multi-family, and educational buildings all of which are passive house and zero energy designs. Coulson acted as the Project Architect, LEED Coordinator, and Passive House Consultant for the UMD Bagley Classroom.

James A. Keller, P.E., LEED AP is a Partner at Gausman & Moore Mechanical and Electrical Engineers and leads the firm's sustainable design team. Keller is a founding board member of the USGBC Minnesota Chapter and Founding Co-Chair of ASHRAE Minnesota — Sustainable Design Committee. He currently serves on the Dakota County Technical College's Executive Steering Committee implementing the American College & University Presidents Climate Commitment. Gausman & Moore has completed over 50 sustainable design projects, including LEED Certified, LEED Gold, and LEED Platinum projects, as well as three net-zero energy projects.

John W. Rashid, AIA, LEED AP is Associate Director and Manager of Construction and Operations for the University of Minnesota Duluth (UMD) Facilities Management Department. Rashid oversaw the construction of the Bagley Nature Pavilion by the UMD Facilities Department. He serves on the Advisory Board for the Glensheen Historic Estate and on the Comprehensive Plan Committee for the City of Duluth. Additionally, he is an instructor teaching Project Management for the College of Science and Engineering.

David Salmela, FAIA, is a self-trained architect who practices in Duluth and is a modernist, sensitive to the vernacular of Minnesota's immigrants. Salmela has won 48 regional and national awards and has been widely published. In 2005 the monograph, *Salmela/Architect* by U of M Dean of the College of Design, Thomas Fisher, was published. In 2007 Salmela received an Honorary Doctorate of Humane Letters

from the University of Minnesota. In 2008 he received the AIA Minnesota Gold Medal, AIA Minnesota's highest award bestowed on an individual member.

Malini Srivastava, AIA, Certified Passive House Consultant, is the project architect for several Salmela Architect projects. She brings her interest and expertise in energy and environmental conservation & health issues to all her projects including the use of standards such as LEED, International Living Building Challenge and MN Green Star to aid that process. Her research and academic work has received scholarships and grants, and have been exhibited and published. Srivastava also serves as a Founding Board Member of the North Dakota Chapter of the USGBC.

Event 34 — A PMKC Program

8:30 am – 10:00 am

Best Laid Plans: Business Planning for Small Firms

1.25 LU Hours

Co-sponsored by the AIA Practice Management Knowledge Community

In 21st century practice, unpredictability is a fact of life for architectural firms. Small firm owners must cope with constantly shifting workloads, respond quickly to promising opportunities and deal immediately with unexpected challenges. This seminar presents strategies for business planning within this milieu of unpredictability, including case studies illustrating best practices. Participants will learn about the major components of business planning and practical techniques for plan development and implementation.

Rena M. Klein, FAIA, is principal of RM Klein Consulting in Spokane, Washington, a firm offering business planning services, meeting facilitation, and management education to architects and designers. Building on her graduate degree in management and her twenty years experience as the owner of a small architectural firm, Klein regularly presents seminars for design professionals. Her innovative work on architectural practice has appeared in print and web publications, including AIA's on-line Architects Knowledge Resource.

A book signing for Rena Klein's *The Architect's Guide to Small Firm Management* is scheduled to immediately follow this program.

Event 35

10:15 am – 11:45 am

School of One: Transforming the American Classroom, One Student at a Time

1.25 LU Hours

Named among *TIME* magazine's 50 Best Inventions of 2009, "School of One" is a concept that rethinks how education can leverage technology to deliver more personalized, effective, and engaging instructional programs. Nationally renowned architects participated in the American Architectural Foundation's School of One Great Schools by Design Charrette which helped shape the design of a pilot facility. The ideas generated through this charrette can now be applied to full-scale schools everywhere. Discover how the intersection of technology, learning styles and design "thinking" can fundamentally change our view of traditional American classrooms.

John Pfluger, AIA, LEED AP, is Principal at Cunningham Group Architecture, P.A. He has been instrumental in creating exceptional learning environments that enhance the educational process and break ground for new methods of educational delivery. Pfluger's reputation as a designer has led him to national recognition in school design. He was one of ten architects selected to participate in the "Great Schools by Design Charrette," which was sponsored by the American Architectural Foundation (AAF), the AIA's Committee on Architecture and Education, and *Architectural Record*.

Event 36

10:15 am – 11:45 am

Building Air Tightness Verification and Diagnostics

1.25 HSW LU Hours

HSW Health Safety Welfare Uncontrolled air infiltration in buildings is becoming widely recognized as a significant source of energy waste, especially in cold climates.

Studies show that up to 40% of the heating load in commercial buildings can be attributed to uncontrolled air leakage. The U.S. Army Corps of Engineers (USACE) has mandated air barrier verification via performance testing in all new construction. This program will discuss the critical aspects of successful air barrier design and construction, and the considerations necessary to verify the system performs as required. The program will highlight actual buildings that have been designed, constructed, and tested under the new USACE requirement and report on the impact this new requirement has had on performance.

Brian E. Erickson, M.S.P.E. is an engineer with Pie Forensic Consultants in Eden Prairie. He has consulted on and performed numerous large-building air leakage tests across the United States, including infrared and smoke generation diagnostic evaluations. He has also consulted with the USACE in their air barrier requirements and testing protocols. Erickson has presented topics of building science, water management, roofing and exterior claddings to both local and national audiences.

Thursday, November 4

Event 37

10:15 am – 11:45 am

Walking the Green Walk: Architects Build Sustainability at Home



1.25 HSW/SD LU Hours

This program will feature two case studies of architects and design professionals incorporating sustainable design practices for their home. Each will share what worked, what didn't, lessons learned including discussion of affordability. The program will be introduced by Kevin Flynn, AIA, who, along with his wife, Roxanne Nelson, AIA, designed a home for their family that also incorporated numerous sustainable design strategies.

Kevin Flynn, AIA, is an award-winning architect, green building consultant and leader within the sustainable design community. His firm, EcoDEEP, practices with an acute focus on sustainable design. Flynn provides sustainable design thinking, site impact analysis, carbon reduction, green building and LEED documentation for architects, builders, developers, corporations and municipal governments.

The Solner's. Creating a comfortable environment that captured the Solner family's desired lifestyle with low operating costs was the goal for this new home in Apple Valley. The desire to reduce energy consumption was at the forefront of planning as well as daylighting strategies, SIP Panel construction and the use of a geothermal heating and cooling system. Attendees will learn how the process unfolded relative to cost versus value, building in a tough economic environment and other challenges the Solners faced along the way. **Dave Solner, AIA**, is a Principal of Cuningham Group Architecture, P.A. and Director of its Restaurant/Retail Studio.

The Turck's. In an effort to incorporate as many sustainable practices into their remodel as was practical and affordable, the Turck's embarked on a hands-on process of a do-it-(mostly)-yourself sustainable home remodel. Attendees will hear about their research, process and learn what worked from first steps like an energy audit and envelope evaluation, to tearing off the roof for a second story, developing a sustainable landscape plan — even hosting a reality television film crew.

Jean Turck works with Miller Dunwiddie Architecture in Minneapolis primarily in Historic Preservation. **Jesse Turck, Assoc. AIA, LEED AP**, is a Job Captain at BWBR Architects, Saint Paul and leads the firm's Performance Design Mentor program helping to incorporate environmental and sustainable design elements into projects.

Event 38 — A PMKC Program

10:15 am to 11:45 am

Design Firm Strategies Emerging from an Economic Downturn

1.25 LU Hours

Co-sponsored by the AIA Practice Management Knowledge Community

This program will discuss key strategies to sustain a successful practice in today's dramatically changed economic and material environment. Principals and practitioners will gain new insights and tools to emerge from the economic downturn in stronger positions. Strategies discussed will include effectively managing profitability benchmarks; understanding the recession's impact on scope control and risk management; taking advantage of social media as a means of communication; and establishing a means to sustain business through internal transition of ownership.

Greg Cook, AIA, is a principal for Holabird and Root in Chicago. He leads the management and strategic planning of the firm. Cook is dedicated to maintaining the firm's depth and diversity of talent and gives special attention to the training of recent architectural graduates. His extensive portfolio includes modernization/historic renovations, office buildings, industrial facilities, fine and performing arts, and college and university buildings.

Steve Rittenhouse is the president and founder of Consolidated Operations Group, Inc. (COG). COG is a Business Process Outsourcing and consulting firm that specializes in the industries of architecture and engineering. Rittenhouse is a creative, front-line strategist with more than 28 years of executive experience in multi-office professional service firms. He believes that sustainable A & E firms are based not on great ideas, or instincts alone — but on the ability to create and master a unique business model.

Neil Strack, FAIA, is the Senior Managing Architect for the Champaign, Illinois office of Architectural Expressions, a 60 year old A & E firm. He has been involved in many aspects of the profession, including virtually all types of project delivery systems. Prior to his current position, Strack owned and operated a mid-sized architectural firm for 34 years.

Event 39 — An IFRAA Program

10:15 am – 11:45 am

The Marriage of Tradition and Innovation in Worship

1.25 LU Hours

Co-sponsored by the Interfaith Forum on Religion, Art and Architecture

There is a noticeable shift in religious behavior in the United States. The Pew Forum

on Religion and Public Life indicates that 41% no longer practice the religion they were raised in. Individuals belong to religions for a wide variety of reasons and there are plenty of options to choose from. How does this fluid relationship with religion affect religious art and architecture? This panel discussion will illustrate different spiritual places and the symbolic statements they make (or not) in the 21st century. **John Justus, AIA**, will moderate this program. Justus is a principal and vice president of Hammel, Green and Abrahamson, Inc., located in its Sacramento office. During his career at HGA Justus' focus has been the design of religious, higher education and performing arts buildings. From 1979 to 2000 he worked in HGA's Minneapolis Religious Studio alongside Ted Butler, FAIA often collaborating with Bro. Frank Kacmarcik, liturgical design consultant on many religious projects. HGA's Religious Studio was recognized for design excellence with ten state and national awards during this period of time.

Craig Rafferty, FAIA, is a principal of RRTL Architects in St. Paul. He is the Chair for the national AIA's IFRAA Knowledge Community in 2011. He is one of the two AIA Regional College of Fellows Representatives. Rafferty is a member of the distinguished group of Minnesotans who are recipients of the Rotch Traveling Fellowship. His firm, RRTL Architects, has received over 80 awards and acknowledgements in design, primarily for their religious architectural work, including 11 AIA IFRAA Awards for Religious Art and Architecture as well as receiving the AIA Minnesota Firm Award.

Joan M. Soranno, FAIA, is an award-winning architect specializing in religious and cultural institutions. With colleague John Cook, FAIA, as project architect, she has created a small design studio within the large-firm structure of HGA Architects and Engineers. Among her highly regarded buildings is the award-winning Bigelow Chapel for the United Theological Seminary of the Twin Cities. Current work under construction includes the Lakewood Cemetery Garden Mausoleum in Minneapolis which recently won a 2010 Honor Award from the Interfaith Forum on Religion, Art and Architecture (IFRAA) for unbuilt work.

Richard Vosko, Hon. AIA, has worked as a sacred space planner for Christian and Jewish congregations throughout North America since 1970. He is the 2010 chair of the Interfaith Forum on Religion, Art and Architecture (IFRAA). Vosko is a member of the Synagogue 3000 advisory board — a national organization empowering congregations and communities to create synagogues that are sacred and vital centers of Jewish life. He is the 2011 recipient of the Berakah Award, the highest honor given by the North American Academy of Liturgy, for his scholarship and practice in liturgical design.

A book signing for Richard Vosko's book *God's House Is Our House: Re-Imagining the Environment for Worship* is scheduled to immediately follow this program.

Event 40 — Exhibit Hall — Free

11:30 am – 2:00 pm

Can't stop thinking about the great raffle prizes at the Minnesota Architectural Foundation's (MAF) booth? Stop by their booth to support their efforts in promoting architecture within our community.

Come visit the chapters of AIA Minnesota and learn about your membership! AIA Minneapolis, AIA St. Paul and AIA Northern will be located in the Member Services lounge along with the Membership Committee and the Members in Transition Committee. Stop by to learn all of the great benefits of being an AIA Minnesota Member!

Don't miss out on your last chance to win big prizes with Booth Sleuths! Prizes will be announced at the end of the session, so stick around because you must be present to win!

If you've registered for Convention packages 1, 2 or 3, eat lunch in the Exhibit Hall and use your \$5.00 coupon provided by AIA Minneapolis!

Please give a warm THANK YOU to all our wonderful exhibitors joining us this year at Convention. They have worked hard all week to provide you with lots of information, connections and networking opportunities!

Event 41 — Keynote Address

2:00 pm – 3:30 pm

Co-sponsored by the AIA Minnesota Committee on Design

Jurors Show and Tell

1.25 LU Hours

Co-sponsored by the AIA Minnesota Committee on Design

This keynote address features three architects, serving as this year's AIA Minnesota Honor Award jurors, who will talk about their practice and projects through a presentation of their work.

Richard Gluckman, FAIA, is a Principal of Gluckman Mayner Architects. Since establishing his architectural practice in New York City in 1977, Gluckman has closely aligned his work with the world of art and design, creating distinctive spaces for numerous art galleries and museums, and developing installations with contemporary artists. Notable projects include Philadelphia Museum of Art's Perelman Building (2007); the Museum of Contemporary Art San Diego



Museo Picasso Malaga

(2007); the Museo Picasso Malaga (2004); the Mori Arts Center (2003); the Georgia O'Keeffe Museum (1997); the renovation of the Whitney Museum of American Art (1995-1998); and The Andy Warhol Museum (1994).

Sarah Graham, FAIA, is a principal of agps.architecture, a multidisciplinary team in Los Angeles and Zürich, Switzerland, bridging the realms of infrastructure, architecture, and landscape. Their work has received international design awards and



Portland aerial tram

has been published, and exhibited worldwide. Projects include the Midfield Terminal at the Zürich International Airport; adidas World Headquarters in Hergogenaurach, Germany; Children's Museum of Los Angeles; and the Portland Aerial Tram. Sustainable design is a common focus throughout the work. Graham holds a B.A. from Stanford University and a Masters of Architecture from the Harvard Graduate School of Design. She has been a visiting and adjunct professor at the University of Southern California as well as a visiting professor at the Rhode Island School of Design, the Harvard GSD, the University of California, Berkeley, and Nanjing University.

Brian MacKay-Lyons, Hon. FAIA, received his Bachelor of Architecture from the Technical University of Nova Scotia in 1978 and his Master of Architecture and Urban Design at U.C.L.A. In 1985, he founded Brian MacKay-Lyons Architecture Urban Design, and twenty years later, partnered with Talbot Sweetapple to form MacKay-Lyons Sweetapple Architects Ltd. Houses designed in Atlantic Canada have made MacKay-Lyons a leading proponent of regionalist architecture worldwide. This recognition has led to a transition in the practice toward increased public and international commissions. He is the Director of the Ghost Architectural Laboratory and a full Professor of Architecture at Dalhousie University.



Brock House

Event 42 — A PMKC Program

2:00 pm – 3:30 pm

Promoting Two-Way Mentoring to Use BIM Effectively

1.25 LU Hours

Co-sponsored by the AIA Practice Management Knowledge Community

Architecture firms have found that using BIM for their projects requires two distinct skill sets: savvy technology knowledge and deep technical skills to detail buildings. Within our current workforce, these two skill sets typically span at least two main generations — Gen Y and the Boomers. This session reveals a unique method to embrace this age/experience diversity while harnessing the strengths of each individual group in promoting learning across the generational divides.

Melissa Lassar is Director of Human Resources and a Principal for Einhorn Yaffee Prescott, Architecture & Engineering, PC (EYP) in Albany, New York. With over 20 years experience, she is responsible for the firm's overall Human Resources including recruitment, compensation and benefits, employee relations, performance management, training and communications. She has developed numerous internal training programs designed to build high performance teams, and support BIM enhanced environments.

John S. Pocarobba is a licensed architect and EYP's Chief Operating Officer and serves on the firm's Board of Directors. Over 22 years, he has focused his career on business and practice management, high performing teams and development of design professionals. In addition, he is an adjunct faculty member at Rensselaer teaching a Professional Practice course. Pocarobba speaks and writes frequently for Build Boston, SCUP, Zweig White Technologies Conference, and others.

Event 43 — An IFRAA Program

2:00 pm – 3:30 pm

The Light of Worship

1.25 HSW/SD LU Hours

Co-sponsored by the Interfaith Forum on Religion, Art and Architecture

The most essential physical element within a worship setting is the use of light, natural and artificial to articulate each aspect of the activities within a worship setting. This program will open with an overview of architectural lighting design. The presentation will provide a glimpse of the future of energy efficient lighting fixtures and lamps and what can be accomplished now. Following will feature projects that illustrate the skilled use of natural light as the form giver and insights into the details for making light work. Lastly, the presentation will contrast both with a discussion of architectural glass and the artistry of this ancient yet completely contemporary



art form, comparing the historic and present day technology and glass available.

John T. Cook, FAIA, is a vice president with Hammel Green and Abrahamson. For most of his career, his work has focused primarily on museums and other spirited cultural projects. Cook specializes in executing complex designs that are aesthetically unique and technically challenging having extensive experience with technical issues involving one-of-a-kind building envelopes. Cook was the lead architect on the Walker Art Center expansion working in close collaboration with the Swiss architectural team of Herzog and DeMeuron.

Elizabeth Deveraux's architectural art glass windows have been installed in churches across the United States and Canada since the founding of her studio in 1969. Her site-specific response to architecture, understanding of symbol, familiarity with scripture, and knowledge of the properties of light make her uniquely qualified in the field of art glass for sacred space.

Michael DiBlasi is a partner and principal designer of the Theatre Planning and Architectural Lighting Design firm Schuler Shook. His experience has been diverse and includes worship facilities, retail developments, exhibits and museums, entertainment facilities, theatres, hotels, offices, and exterior building facades. DiBlasi's work on worship facilities encompasses a broad range of project types, including historic renovation projects.

Richard Vosko, Hon. AIA, will moderate this program. Vosko is the 2010 chair of the Interfaith Forum on Religion, Art and Architecture (IFRAA).

Event 44 — Free

3:45 pm – 5:00 pm

Honor Awards Announcement of Winners

Co-sponsored by the AIA Minnesota Committee on Design

Who won and why? The jury's selection of the 2010 AIA Minnesota Honor Award winners will be announced at this event. A facilitated discussion with the three jurors will explore the distinction of Minnesota architecture and a detailed analysis of their submitted work.



Richard Gluckman, FAIA



Sarah Graham, FAIA



Brian MacKay-Lyons, Hon. FAIA

Richard Gluckman, FAIA, is a principal at Gluckman Mayner Architects in New York, New York.

Sarah Graham, FAIA, is a principal of agps.architecture in Los Angeles, California and Zurich, Switzerland.

Brian MacKay-Lyons, Hon. FAIA, is founder of MacKay-Lyons Sweetapple Architects in Nova Scotia, Canada.

Event 45 — A PMKC Program

3:45 pm – 5:00 pm

When Fingers Start Pointing: Allocating and Insuring Risks in Integrated Project Delivery

1.0 LU Hours

Co-sponsored by the AIA Practice Management Knowledge Community

Increasingly clients will demand forms of integrated project delivery (IPD) for the creation of capital assets. In IPD, relationships are radically changed in many ways including the allocation of design liability exposures. How much risk do you really take on? How vulnerable are you? What is your risk appetite? How can you frame IPD to manage your risk while keeping true to the collaborative process? This session uses a lively interactive format to examine contractual options and explain insurance coverage issues.

Renée Cheng, AIA, is Head of the University of Minnesota School of Architecture. Her research involves documenting case studies of buildings that integrate design with emerging technologies. Her essay on the topic of architectural education and integrated practice was included in the 2006 AIA Report on Integrated Practice. Additionally, she edited a new chapter on Computing Technology for Architectural Graphic Standards published in 2007. In partnership with Laura Lee, she was a 2009 Latrobe Prize finalist for a proposal linking research and practice. Cheng currently serves on the AIA National Board advisory group on Integrated Practice and was 2009 President of AIA Minnesota.

Kevin J. Collins, Assoc. AIA, is the Victor O. Schinnerer & Company, Inc. insurance counsel to the AIA Contract Documents Program as well as the Schinnerer liaison to the AIA Risk Management Committee, Knowledge Communities and the AIA Trust. He has more than 20 years of experience in working with design firms and other construction-related professional service firms on issues of professional liability exposure and business risks. He has spoken extensively on the challenges to the architecture profession created by Building Information Modeling and Integrated Project Delivery.

Thursday, November 4

Event 46 — An IFRAA Program

3:45 pm – 5:00 pm

The Sound of Worship

1.0 LU Hours

Co-sponsored by the Interfaith Forum on Religion, Art and Architecture

There is no one formula for the acoustic design of a new worship space or renovation of an existing one. Worship spaces are influenced by worship style, faith tradition, number and type of instruments used, number of singers or song leaders, congregational participation, cultural influences, and recording and amplification needs. For many buildings, a variety of music and worship styles must coexist within the same space. Through photographs and drawings, presenters will take participants through a host of worship environments, illustrating the unique needs or considerations for each.

Dennis Fleisher, Ph.D., has worked as an acoustics consultant and designer of spaces for worship, music, performance, and education since 1981. The majority of projects since 1990 have been liturgical spaces including more than 250 churches and chapels and over 30 cathedrals. He did his primary undergraduate study at the Juilliard School in trumpet performance. He holds a B.A. in Music Education from Nazareth College, an M.A. in Music Theory from the Eastman School of Music, and an interdisciplinary Ph.D. in Physics, Acoustics and Music from the University of Rochester and Eastman School.

Scott D. Pfeiffer is Principal of Threshold Acoustics LLC in Chicago. Pfeiffer's primary early focus was in modeling, measurements, and calculations but this quickly led to leadership on projects incorporating electronic acoustic enhancement which provided a strong connection to the audio/video discipline that he continues to emphasize in his room acoustics work today. Throughout his career, he has carried design responsibility for a large number of performance, worship and educational spaces for music and theater.

Richard Vosko, Hon. AIA, will moderate this program. Vosko is the 2010 chair of the Interfaith Forum on Religion, Art and Architecture (IFRAA).

Event 47

5:00 pm – 6:30 pm

Reception

Join us as we gather with the Interfaith Forum on Religion, Art and Architecture and the Practice Management Knowledge Community to celebrate AIA Minnesota's 76th Convention. The Minnesota Architectural Foundation will draw the winners of their raffle. You'll have an opportunity to see all the 2010 Honor Award submissions on display screens. Take time to view other exhibits including the 2010 25-Year Award, the 2009 Honor Award winners and a special exhibit of the past Louis Lundgren Award recipients. Celebrate and enjoy award-winning architects at this AIA Minnesota Member Reception.

Event 48 — An IFRAA Program

6:45 pm – 9:00 pm

Dinner at The Basilica of Saint Mary

Signing up for this IFRAA Event requires an additional fee of \$65 per person.

As a conclusion to the daylong sessions we will dine at the Basilica of St Mary as guests of Dr. Johan Von Parys, AIA Minnesota, and the AIA IFRAA Knowledge Community. Here we will experience the interplay of tradition and innovation; we will experience lighting concepts within 2 distinct worship settings; we will share in the sound of worship through a special concert combining a string ensemble, the grand piano, and the magnificent organ of the Basilica; and we will share in a special exhibit of 60 of the region's most remarkable icons on display. Additionally, Dr. Johan Von Parys, Dr. Richard Vosko, and Dean Thomas Fisher of the University of Minnesota College of Design will comment on the strength of Minnesota's architectural contributions to religious architecture with a presentation that highlights the region's International IFRAA/AIA Award recipient projects, including architecture, art, and craftsmanship.

Friday, November 5

Event 49 — An IFRAA Tour

8:30 am – 2:00 pm

IFRAA Bus Tour

Signing up for this IFRAA Event requires an additional fee of \$40 per person which includes a bag lunch. Limited to 40 registrants.

The final session for the IFRAA Conference is a tour that will take us to 5 exemplary worship spaces that illustrate the issues discussed during the conference of light,

sound, tradition, innovation, and art. The tour will proudly display the broad spectrum of religious architecture and art within the Twin Cities area and each stop will have the project architects and artists available to join in the discussion and tour. Starting in the morning and concluding back at the convention center around 2 pm.

Event 50

8:30 am – 10:00 am

Lessons from History: Ethical Leadership Challenges

1.25 LU Hours

Limited to the first 50 registrants

Just as ancient structures or historic buildings inspire current design trends and architectural constructions, historic characters have much to tell us about modern leadership. This program will discuss our third president, Thomas Jefferson. Jefferson's interest in, and practice of, architecture is well known — and is still today an expression of his belief in reason, democracy, and civic virtue. We'll look at his ethical framework and examine the ethical lessons Jefferson still teaches us today. We will be using Gordon S. Wood's book *Revolutionary Characters: What Made the Founders Different* as the foundation for the discussion. Participants are encouraged to read Wood's chapter on Jefferson before the session. Registered participants will also be invited to participate in a LinkedIn discussion group both before and after the session.

Jane Neumiller-Bustad is the President of Creative Mind Consulting, and has 20 years of training, speaking, facilitating and business brainstorming experience. She regularly works with leadership teams to strengthen their work relationships, innovation chops and ethical standards. Combining a life long interest in history and economics with the early adoption of new technology (such as blogging and social media tools), Neumiller-Bustad creates innovative learning programs that challenge participants to think deeply and plan strategically.

Event 51

8:30 am – 10:00 am

The Union Depot: 21st Century transit in a historic rail station

1.25 LU Hours

Join key team members as they explain the details of renovating and restoring a historic landmark into a state-of-the-art intermodal transit hub in downtown Saint Paul. This program will show how this preservation and transportation project is intended to improve the economic viability of its urban neighborhood. Gain insight into how builders, preservation architects, transportation engineers and building engineers are working together to deliver a complex project for a multi-stakeholder client.

Michael Bjornberg, AIA, is a senior project manager and historic architect at HGA with over 30 years experience, most of which has been in historic building restoration, large institutional projects and urban planning. Bjornberg's current projects include the Union Depot, the Minnesota State Capitol, Historic Fort Snelling and the American Swedish Institute. His role for the Union Depot project is to cover all aspects related to the building and the historical nature of the facility.

Greg Brown is a Senior Project Manager with URS Corporation. Brown spent the first 4 years of his career as a Civil Engineer with the U.S. Air Force including an 8 month tour in Abu Dhabi, UAE. His professional experience includes a wide range of roadway, transit, drainage and utility infrastructure, park and trail projects. Brown is leading the transportation engineering component of the Union Depot project.

Dan Mehls is a Construction Executive with Mortenson Construction. Mehls' career with Mortenson began more than 22 years ago. Throughout his career he has managed numerous large public projects such as Target Field, Minneapolis Central Library, Target Center, Alerus Center in Grand Forks, Kinnick Stadium Renovation at the University of Iowa, and the Edward Jones Dome in St. Louis. Mehls is leading Mortenson's role as lead design-build contractor for the Union Depot project.

Event 52

8:30 am – 10:00 am

Solar Ready Building Guidelines for the Twin Cities Area

1.25 HSW/SD LU Hours

HSW Health Safety Welfare Solar America Cities (SAC) is a partnership between the U.S. Department of Energy (DOE) and 25 cities across the country that have committed to accelerating the adoption of solar energy technologies at the local level. The object of this work locally has been to develop solar ready building design guidelines and a model specification that are tailored to the Twin Cities region specifically and the Midwest/Minnesota in general. This workshop will explain the Solar America Cities program, introduce the building design guidelines, present the model specification section, and discuss the structural implications for solar ready construction.

Ron LaMere is a structural engineer and principal with BKBM Engineers. He is a long-time volunteer on the State of Minnesota's Building Code Structural Advisory Committee as well as a special structural inspections expert recently involved with writing portions of the 2012 IBC. In addition to designing numerous buildings and structures, LaMere's firm has recently evaluated several existing buildings for potential solar installations.

Bob Lunning is a principal of Lunning Wende Associates, Inc. He has 30 years experience assisting communities to achieve strategic visions through high performance environments. His building designs include numerous single and multi-family residential projects, a range of educational facilities, and historic building renovations.

Brian Ross is a principal of CR Planning. He has 20 years of experience helping communities, state agencies, and non-profit organizations address energy efficiency and renewable energy issues through program development, policy formation, and advocacy efforts. He currently coordinates the Minneapolis/Saint Paul Solar Cities program. He was the primary author of the State of Minnesota's Model Ordinances for Sustainable Development and created the program design for Minnesota's newly launched GreenStep Cities program.

Scott Wende, AIA, APA is a principal of Lunning Wende Associates, Inc., an architectural and urban design firm. In 35 years of experience a consistent theme in his work is improving the quality of life for urban communities. Recent projects have focused on "green" and sustainable transition strategies for neighborhoods and the urban core.

Event 53

8:30 am – 10:00 am

EPA Energy Tax Benefits for Architects

1.25 HSW LU Hours

HSW Health Safety Welfare Attend this program and gain an understanding of the Energy Policy Act of 2005 as well as the recently extended 179D federal tax benefits available for the design of energy-efficient buildings. Find out how the "designer" (architect, engineer, specialty contractor) can qualify to claim substantial tax benefits under 179D for any public or government-owned buildings. Learn how you can take advantage of new energy tax incentives for public clients, private clients, niche business development strategies and revenue generating opportunities.

Michael F. D'Onofrio is Managing Director of Engineered Tax Services (ETS). ETS is a nationally-licensed engineering firm with professional engineers and certified public accountants on staff who marry the science of engineering with the principles of tax and accounting. ETS specializes in providing a wide spectrum of engineered accounting solutions such as energy tax credits, cost segregation studies, energy audits, carbon footprint certification and insurance appraisals.

Event 54 — Free

10:15 am – 11:45 am

3 x 3: Building a network of mentors — EPC+FAIA Open Dialogue

1.25 LU Hours

Co-sponsored by the AIA Minnesota Emerging Professionals Committee

Architecture was founded on an ideal of advancing by apprenticeship — mentoring bridges between generations. While emerging professionals seek guidance to help navigate the uncertainties of advancing a career path, seasoned practitioners often look for insight into current trends and new technologies. In this session, attendees will be broken into groups of three with various levels of experience (from interns to AIA Fellows) and be guided through a series of discussions with other practitioners. The groups will rotate so every participant is exposed to a variety of perspectives within the field discussing topics such as qualities of leadership, benefits of developing networks, and the importance of cross-generational connections. This interactive program is designed to kick-off a mentoring series between the College of Fellows and Young Architects.

Edward J. Kodet, Jr., FAIA, LEED AP, is the founder and President of Kodet Architectural Group. The firm has been published internationally and has received numerous design awards. Kodet has been active in the AIA currently serving as a Regent with the American Architectural Foundation, chairing the Restoration Advisory Committee for the AIA Octagon in Washington DC, and he is Chancellor of the AIA College of Fellows. This year Kodet was selected to receive AIA Minnesota's Gold Medal Award.

Erin M.S. McKiel, AIA, LEED AP, is a senior Project Architect at BWBR Architects, president of AIA Saint Paul and a leader in the AIA Minnesota Emerging Professionals Committee. McKiel helped coordinate the AIA150 Saint Paul community service project to explore the challenges and opportunities surrounding construction of the Central Corridor light rail line. At BWBR, McKiel is a mentor for incoming staff as well as an advisor to project managers and clients on sustainable and performance design strategies.

Heidi Neumueller, AIA, LEED AP, is an architect at Kodet Architectural Group. Neumueller is active in the AIA, serving on the Convention Programs Committee, Committee on Design, Emerging Professionals and Intern Development Program committees. She is currently the co-chair of the AIA Minnesota Leadership FORUM and in 2009 served as the Associate Director of AIA Minnesota.

Event 55

10:15 am – 11:45 am

Construction History: An Integrative Approach to Practice and History

1.25 LU Hours

The movement of Construction History, based in the United Kingdom and first organized in the U.S. in 2007, brings together designers, engineers, contractors, preservationists, archaeologists, and scholars to build an understanding of the technical and professional climates in which built work has been realized. This program will consist of three presentations including a discussion of C.A.P. Turner and the Minneapolis Warehouse District; a presentation of research on Chicago skyscrapers revealing new links between industry, engineering and architecture in the 1890s; and a presentation of ongoing research on elevator engineering and its effect on tall building design. Attend this program and gain an appreciation for how historic research can help meet the challenges faced by practicing architects, engineers and contractors today.

Meghan Elliott, PE, Associate AIA, is an Associate with Meyer Borgman Johnson in Minneapolis. She is a practicing professional structural engineer with a focus on preservation engineering, and a particular interest in early reinforced concrete buildings. She serves on the Minneapolis Heritage Preservation Commission as well as on the Board of Directors for two non-profit organizations.

Lee Gray, PhD is an Associate Professor in the UNC-Charlotte School of Architecture and Associate Dean in the UNCC College of Arts and Architecture. He is the author of *From Ascending Rooms to Express Elevators: A History of the Passenger Elevator in the 19th Century*. He has appeared on the History Channel in Modern Marvels' "Building a Skyscraper" and will appear in the forthcoming PBS program: NOVA: The Secret Life of Elevators (Spring 2011).

Thomas Leslie, AIA, is an Associate Professor of Architecture at Iowa State University, where he teaches technology, design, and history courses. His research examines the intersection of engineering and architecture throughout history, and has been published in a number of professional journals. He is the author of *Louis I. Kahn: Building Art, Building Science* (Braziller, 2005) and (with colleague Jason Alread) *Design-Tech: Building Science for Architects* (Architectural Press, 2007).

Event 56

10:15 am – 11:45 am

LEED Professional Credentials: Navigating the Process

1.25 LU Hours

The LEED Professional Credential program continues to evolve and grow. Major changes and key improvements were phased in during 2009. This program will provide an overview of these changes to the credentialing process, define the new requirements to become a LEED AP and explain the maintenance requirements for credentials. The program will also include a discussion of how a local architecture firm is managing these changes within their firm. Whether you are seeking a first-time LEED Credential, are a LEED AP wondering if you should enroll in the new program, or have questions about maintaining your current credential, this program provides answers.

Sheri L. Brezinka is the Executive Director of the US Green Building Council — Minnesota Chapter. She has been actively involved with the chapter since its start in 2002 and prior to joining the chapter in 2009, served on the board of directors as secretary, vice president and president. She has also been active with USGBC on a regional level including Chairing the LEED 2009 Regional Credits Task Force. Brezinka has 15 years experience in the construction industry.

Stephanie Richards McDaniel, AIA, LEED AP BD+C, a project manager with BWBR Architects Inc., has recently opted in to the LEED Credentialing program and helps BWBR's other 30 LEED APs navigate the process. She counsels clients on LEED strategies and has worked on several projects seeking LEED certification, including the Gustavus Adolphus College academic building seeking LEED Platinum certification. McDaniel served on the advisory group that crafted the City of Saint Paul's Green Building Policy and, in 2004, she received AIA Minnesota's Young Architect Award for Community Involvement.

Event 57

10:15 am – 11:45 am

The Alliance/A University District Partnership: A Transformative Vision

1.25 LU Hours

Co-sponsored by the AIA Minneapolis Urban Design Committee

The University District Alliance was established by the Legislature in 2007 to address the impact of the University of Minnesota on the surrounding neighborhoods. The partners are the University, city of Minneapolis and neighborhoods of Marcy-Holmes, Southeast Como, Prospect Park, the West Bank and its business associations. This Convention program will present the transformative vision and urban design framework that has been proposed to ensure that the communities adjacent to the campus will be vital, safe and attractive, rich in culture, creativity and human capital. The program will also discuss how this historic inner city dis-

Friday, November 5

trict can be transformed into a leading edge, sustainable community. **Mike D. Christenson** serves as Director of the Community Planning and Economic Development Department for the City of Minneapolis. He is an attorney, a former health care executive and an appointed city official. Christenson is one of the founders of the Phillips Partnership and the Health Careers Institute which were formed to revitalize the Phillips neighborhood in south Minneapolis.

Richard L. Gilyard, FAIA, lives in the Minneapolis neighborhood of Prospect Park, a member of the University District Alliance partnership. He has served as chair of the Alliance Vision and Planning task force for the last two years. He was appointed co-chair of the Mayor's Task Force to re-examine the I-35 freeway extension in Duluth. Currently, he is a consultant architect advising courts and design teams nationally on project development strategies and design.

Kit Richardson, AIA, co-founded Schafer Richardson Inc. in 1995 and has over 33 years experience in commercial and high-density residential real estate, architecture and construction. Richardson focuses on the design and construction aspects of Schafer Richardson's developments. He plays a leadership role in design, architecture, site planning, engineering and entitlement process for all of Schafer Richardson's urban infill housing and commercial developments.

Ignacio San Martin is Dayton Hudson Professor of Architecture, Chair of Urban Design and Director of the Metropolitan Design Center (MDC) at the University of Minnesota. Under his leadership the MDC has explored how architecture, landscape architecture and urban design can assist Twin Cities metropolitan communities becoming more livable and sustainable. Today, The MDC's research and outreach programs bring University faculty and students to collaborate with municipalities and non-profit organizations in critical design and research investigations.

Brian Swanson works for the Office of Budget and Finance at the University of Minnesota. As a budget officer, and former campus planner, Swanson coordinates the University's annual capital budget, legislative capital request, six-year capital plan, and space utilization initiative. Swanson currently serves on the University's Capital Oversight Group, the University District Alliance Steering Committee, and the Executive Committee for the Biomedical Discovery District initiative.

Event 58 — Keynote Address

12:00 noon – 2:00 pm

The Leading Edge

1.25 LU Hours

Co-sponsored by the Minnesota Architectural Foundation, Beverly E. Hauschild-Baron Leadership Fund

How are you and your firm stepping up to the challenges of the new economy? Are you still reacting instead of responding? Still working hard but not seeing results? The most successful firms are revolutionizing the way they do business. All employees must now learn to think and act like leaders. How can you deliberately inspire your coworkers, guide your leadership team, and motivate your staff to embrace this new direction? You need to take charge and start leading on purpose. In this fun, interactive keynote, you'll learn about your own unique leadership style and discover how to use it to define your purpose, inspire others, and develop a plan that produces results.



Geoff Webb, Vice President at Graceworks, helps deepen the leadership and communication skills of hundreds of professionals each year. Webb draws on over 20 years of leading leaders in the military, corporate, and non-profit sectors as well as his unique and diverse experiences to help others expand their influence. He graduated from West Point with a degree in Engineering Physics and went on to command units in Europe and Asia as an attack helicopter pilot. Webb also worked as a television actor and taught improvisation in New York City. He has lent his leadership to such non-profits as The Boy Scouts of America, World Vision, and Young Life. Currently, with Graceworks, he has the chance to improve the experience, culture and bottom line of companies all around the world. Within the design and construction industry, Webb has worked with firms including HOK, Gensler, KlingStubbins, EYP, DLR Group, Jacobs, Earth Tech, CH2M Hill, Systra Engineers, Skanska, and Boldt Construction. As a trainer and coach, Webb's light-hearted intensity always creates a fun and powerful learning environment.

Friday, November 19

Event 59 — Awards Celebration

6:00 pm – 11:00 pm

An Evening of Celebration

Join President Rich Varda, FAIA in paying tribute to AIA Minnesota's Gold Medal recipient, Edward J. Kodet, Jr., FAIA. This year's celebration will be at the Minnesota History Center. The evening will be a festive event in honor of our distinguished award winners.

Gold Medal

Edward J. Kodet, Jr., FAIA, will be awarded the 2010 AIA Minnesota Gold Medal, AIA Minnesota's highest award bestowed on an individual member. It serves as recognition for a lifetime of distinguished achievement and significant contributions to architecture.



"AIA has always been a forum for me to advocate for the profession how the profession can enhance everyday lives, enrich cities and provide inspiration for society."

Kodet founded Kodet Architectural Group, Ltd., in Minneapolis, Minnesota in 1983, after 13 years of experience as a firm partner at a previous firm. Kodet's achievements as an architect and educator along with his service to the profession over his career have proven exemplary and inspirational, noted the jury.

Kodet has won three national and three state AIA design awards and 17 additional design awards, while the firm continues to expand with projects in education, religious, public facility, historic restoration, recreation and retail design areas. Kodet's role as a designer and mentor has helped prepare all employees to step into leadership roles themselves, creating a successful sustainable firm while allowing him to keep ties to teaching and the profession.

AIA activities have spanned Kodet's entire career. His involvement in the 1970's on AIA Minnesota's Legislative Committee ensured the creation of the State Designer Selection Board as well as the first statute of limitations for professional liability. In addition, Kodet's belief in addressing the organization's finances in a transparent way played out in many roles from the AIA Minnesota President in 1996 to the 2002 AIA National Vice President that has lead to the organization's financial policies and strength it has today.



St. Croix Lutheran Chapel

Kodet is also a member of AIA's College of Fellows, serving as Chancellor in 2010, and has held numerous national positions within the profession including serving as the AIA North Central States Regional Director, American Architectural Foundation as Regent and the chair of two Gold Medal and Firm Award juries.



Our Savior Lutheran Church



Whittier Community School

Registration Form

Register online!

www.aia-mn.org

Pre-Registration ends October 26, 2010.

Receive a \$15 discount when you register online by October 26, 2010.

Online registration features immediate feedback and confirmation on all events. Credit card payment is required for all online registrations.

Register early! All Pre-Registration ends October 26, 2010. Registration will resume on November 2, 2010 at the Convention Center at which time a late fee will be assessed (\$15 members and \$25 non-members).

A. Please provide the following information. Please print or type.

Name

(If applicable, please indicate AIA, FAIA, or Assoc. AIA, etc.)

AIA Member #

Firm

Address

City, State, Zip

Phone

E-mail:

(required to receive confirmation)

Fill in Total Amount Due below. Add subtotals from Sections C, D, and E.

Total Amount Due \$ _____

All Pre-Registration ends October 26, 2010. Registration will resume on November 2, 2010 at the Convention Center at which time a late fee will be assessed (\$15 members and \$25 non-members).

Method of Payment (check one)

Check MC Visa AmEx

Paying by credit card? **Why not register online at www.aia-mn.org and receive a \$15 discount?**

Account Number

Exp Date

(registration cannot be processed without expiration date listed)

Card Holder Name

B. There are four choices for registration — check package & rate (online)

AIA Minneapolis is providing \$5 coupons to be used for lunch in the Exhibit Hall on Wednesday or Thursday for those who choose Packages 1 – Full Convention Registration, 2 – Create-Your-Own, or 3 – Emeritus Member Registration.

Member*

Non-Member

- 1. Full Convention Registration** **\$230 (\$215)** **\$340 (\$325)**
Enjoy four days of seminars during the Convention, including Events 8 and 58, PMKC seminars and IFRAA seminars. **Please indicate on Page 2 which seminars you plan to attend.** IFRAA Special Events 48 & 49 and Event 59 AIA MN Awards Celebration are priced separately (see Sections D and E below).
- 2. Create-Your-Own Package** **\$55/ea** **\$80/ea**
Online registrants signing up for two or more paid seminars will receive a \$15 discount from their total.
Choose any number of seminars. **Please indicate on Page 2 which seminars you plan to attend.** Events 8 and 58 have an *additional* fee of \$25 each. IFRAA Special Events 48 & 49 and Event 59 AIA MN Awards Celebration are priced separately (see Sections D and E below).
- 3. Emeritus Member Registration** **\$115 (No online discount.)**
AIA Emeritus members can choose any number of seminars, including Events 8 and 58. **Please indicate on Page 2 which seminars you plan to attend.** IFRAA Special Events 48 & 49 and Event 59 AIA MN Awards Celebration are priced separately (see Sections D and E below).
- 4. Student Full Registration** **\$25 (No online discount.)**
Copy of valid Student I.D. must accompany registration.
Choose any number of seminars. **Please indicate on Page 2 which seminars you plan to attend.** Events 8 and 58 have an *additional* fee of \$25 each. IFRAA Special Events 48 & 49 and Event 59 AIA MN Awards Celebration are priced separately (see Sections D and E below).

*** Members of the following organizations may register at the member rate. Please circle your organizational affiliation.**

AIA AIAS ACEC AGC AIGA APA ASID ASLA AWI CMA
CSI IFMA IFRAA IIDA IMI MSPE PAM PMKC SAH
SDA SLUC SMPS ULI USGBC

C. Fill in subtotal at right

Subtotal

\$ _____

D. Events requiring additional fees:

- Event 8, Member Congress Keynote & Lunch (included in Packages 1 & 3) \$25
 Event 48, IFRAA Dinner (not included in any Package) \$65
 Event 49, IFRAA Tour (not included in any Package) \$40
 Event 58, Keynote & Lunch (included in Packages 1 & 3) \$25

Subtotal

\$ _____

E. Event 59, Awards Celebration \$65/person \$65 x _____ = \$ _____
(Not included in any package — please indicate here if you plan to attend.)

Your name

Please indicate one meal choice (see invitation for details):

Chicken Beef Vegetarian

Guest name

Please indicate one meal choice (see invitation for details):

Chicken Beef Vegetarian

For more than 2 people, please use the enclosed invitation RSVP card.

Name _____

Register online, by mail or fax.

- Online Registration (a \$15 discount): www.aia-mn.org/convention
- Mail Pages 1 & 2 to: AIA Minnesota, 275 Market Street, Suite 54, Minneapolis, MN 55405
- Fax (credit card only) Pages 1 & 2 to: 612-338-7981

Questions? Call 612-338-6763.

Do not fax or mail after October 26, 2010.

Indicate which events you plan to attend: (one only per time period)

Closed seminars will be posted on the AIA Minnesota website at www.aia-mn.org. Please note: Access to the Exhibit Hall is FREE to all.

Tuesday, November 2, 2010

Program times may overlap. Choose carefully noting start and end times.

- 9:00–12:00 noon Event 1 ARE Review: Programming, Planning & Practice
 Event 2 2D/3D Visualization Workshop for Architects and Designers
 Event 3 Sustainability, Efficiency & Honey Bees: Old Lessons, New Solutions
- 9:00–10:30 am Event 4 The 2010 FGI Acoustical Guidelines for Healthcare Facilities
 Event 5 Designing Disaster Resistant Affordable Housing
- 10:45–12:00 noon Event 6 Seven Critical Considerations for Wayfinding Design
 Event 7 The Challenge to Address Humanitarian Issues Through Design Solutions
- 12:15–2:45 pm Event 8 Member Congress, Keynote Address and Lunch
- 3:00–4:30 pm Event 9 Keynote Address: Out of Practice
- 4:30–7:00 pm Event 10 Exhibit Hall — Free

Wednesday, November 3, 2010

Program times may overlap. Choose carefully noting start and end times.

- 8:00–10:00 am Event 11 Architect-Led Design-Build: IPD with the Architect in Charge
- 8:30–10:00 am Event 12 Lessons from the edge: Rebuilding Detroit & Other Older Industrial Cities
 Event 13 An Exploration of Emerging Building Technologies for On-site Energy
 Event 14 Maximizing Your Business Development ROI
 Event 15 (Re)Learning to Collaborate
- 10:15–11:30 am Event 16 Innovation in Architecture: Design and Manufacturing and IPD
 Event 17 Creating a Market-rate Zero Carbon Office Building
 Event 18 Challenges and Opportunities for our Profession in a Recovering Economy — Free
 Event 19 Taking Your Marketing Off-Road
 Event 20 Growth by Hiring: happily ever after
- 11:15 am–2:30 pm Event 21 Exhibit Hall — Free
- 2:30–4:00 pm Event 22 Manufacturing, Materials, and Making: Cases for the Midwest
 Event 23 Solid State Lighting — Perspectives on LEDs
 Event 24 Composite Wood Products and the Toxic Substances Control Act
 Event 25 Multi-Level Marketing: What other business models can teach us
 Event 26 Integrating Design Leadership and Project Management Yields
- 3:45–6:00 pm Event 27 Exhibit Hall — Free
- 6:00–7:30 pm Event 28 Keynote Address: Somewhere in Between

Thursday, November 4, 2010

Program times may overlap. Choose carefully noting start and end times.

- 7:00–8:15 am Event 29 Practice Management Roundtable Discussion — Free
- 8:00–10:00 am Event 30 Fabric Structures — Efficient and Sustainable Solutions
 Event 31 Taking the Mystery and Pain out of "Openings" Coordination
 Event 32 The Artful Presence
- 8:30–10:00 am Event 33 A Passive House and LEED Approach to Net Zero
 Event 34 Best Laid Plans: Business Planning for Small Firms
- 10:15–11:45 am Event 35 School of One: Transforming the American Classroom
 Event 36 Building Air Tightness Verification and Diagnostics
 Event 37 Walking the Green Walk: Architects Build Sustainability at Home
 Event 38 Design Firm Strategies Emerging from an Economic Downturn
 Event 39 The Marriage of Tradition and Innovation in Worship
- 11:30 am–2:00 pm Event 40 Exhibit Hall — Free
- 2:00–3:30 pm Event 41 Keynote Address: Jurors Show and Tell
 Event 42 Promoting Two-Way Mentoring to Use BIM Effectively
 Event 43 The Light of Worship
- 3:45–5:00 pm Event 44 Honor Award Announcement of Winners — Free
 Event 45 When Fingers Start Pointing: Allocating and Insuring Risks in Integrated Project Delivery
 Event 46 The Sound of Worship
- 5:00–6:30 pm Event 47 Reception
- 6:45–9:00 pm Event 48 Dinner at The Basilica of Saint Mary*

Friday, November 5, 2010

Choose only one program for each time period.

- 8:30 am–2:00 pm Event 49 IFRAA Tour*
- 8:30–10:00 am Event 50 Lessons from History: Ethical Leadership Challenges
 Event 51 The Union Depot: 21st Century Transit in a Historic Rail Station
 Event 52 Solar Ready Building Guidelines for the Twin Cities Area
 Event 53 EPAct Energy Tax Benefits for Architects
- 10:15–11:45 am Event 54 3 x 3: Building a network of mentors — EPC+FAIA Open Dialogue — Free
 Event 55 Construction History: An Integrative Approach to Practice & History
 Event 56 LEED Professional Credentials: Navigating the Process
 Event 57 The Alliance/A University District Partnership
- 12:00 noon–2:00 pm Event 58 Keynote Address: The Leading Edge

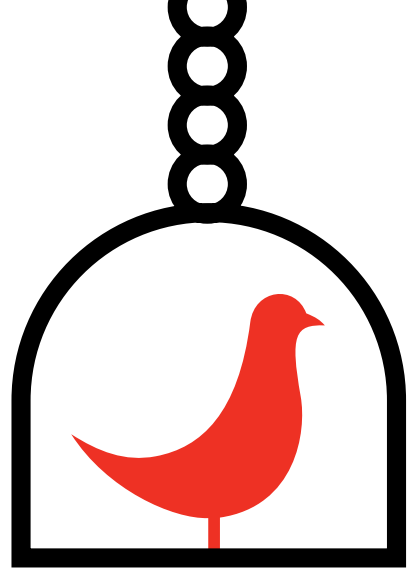
Friday, November 19, 2010

- 6:00–11:00 pm Event 59 Awards Celebration*

*Registering for these events requires an additional fee.

Convention Registration Cancellation/Refund Policy:

Cancellation requests must be received in writing on or before October 26, 2010. Please e-mail or fax your request to: allardyce@aia-mn.org; fax: 612-338-7981. There is a \$50 cancellation fee. Refunds (minus the cancellation fee) will be processed via your method of payment. No refunds will be offered after October 26, 2010. Questions? Contact Amber at AIA Minnesota, 612-338-6763 or by e-mail at allardyce@aia-mn.org. Thank You!





AIA Minnesota

A Society of The American Institute of Architects

275 Market Street, Suite 54
Minneapolis, MN 55405-1621
612-338-6763

www.aia-mn.org