

77th Annual Convention & Exposition

November 8, 9, 10, 11, 2011

Minneapolis Convention Center



# Framing Our Future



AIA Minnesota

A Society of The American Institute of Architects



# Framing Our Future

## An ambitious theme?

Perhaps, but certainly one that architects are eminently qualified to tackle.

Architects have a history of prevailing through difficult times, diligently designing buildings and improving our communities. The external forces that have rocked the profession — the economy, the new face of competition, confusion about the value architects provide — still exist. Now is the time to address these issues and take action on behalf of the future of the profession.

Working collectively as an organization to support the profession, AIA Minnesota is now realizing the benefits of the efforts begun two years ago through the Recovery Task Force, the Carlson School Report and the Public Relations Task Force. We now have new metrics, analysis, evaluation and inspiration to be proactive in framing how the architectural profession moves forward. We have compelling reasons to believe there is great potential and unrealized value. How do we take hold of this information and set our destiny?

During the 2011 Convention, we come together to forge a new course that is unknown in outcome, but based on research and rooted in the value and education of the architect. We are increasing our range of successful models for practice as we translate architect skill-sets into more diversified, broad-reaching and innovative roles. Please join us in the discussion and help us *Frame our Future*.

Steve Fiskum, AIA  
President

Michelle Mongeon Allen, AIA, LEED AP  
Convention Chair



## Convention Logistics

### Online Convention Registration

Quick, easy and secure! Register online for the Convention at AIA Minnesota's website, [www.aia-mn.org](http://www.aia-mn.org). Online registration features include:

- Instant confirmation of all your chosen programs
- Convenient and secure payment with your credit card
- Immediate receipt for reimbursement

Some programs fill quickly; closed seminars that have reached capacity will be listed on the website. To attend your first choice of programs, register online today!

### Continuing Education

AIA Minnesota is offering Continuing Education credit for programs at the Convention. All credits listed are pending AIA approval. Both Health Safety Welfare (HSW) credits as well as Sustainable Design (SD) credits are offered. According to our review, Convention programs marked as HSW will be accepted for Minnesota's CE requirement for licensing. Additionally, this year's Convention offers four programs that also have the GBCI CE Hour Credits. Take advantage of this economical and efficient way to get credit for your AIA and State of Minnesota licensing CE requirements as well as those to maintain your LEED accreditation. Verification forms will be available at the Convention Registration Desk.

### IDP Training Hours

Interns going through IDP can receive Training Hours for attending Convention programs. AIA's Learning Units (LUs) are now equivalent to IDP's Training Hours. For example, Event 2 at the Convention offers 2.75 LUs which would translate to 2.75 Training Hours for IDP interns.

### Who Should Attend

- Architects
- Specifiers
- Engineers
- Landscape Architects
- Interior Designers
- Facility Managers
- Preservationists
- Construction Managers
- Planners
- Contractors
- Developers
- Industrial Designers
- Graphic Designers
- Marketing Professionals
- Administrators
- Draftspersons
- CAD Operators
- Interns/ Students

Please note that member rates for seminars apply to members of the following organizations: AIA, ACEC, AGC, AIGA, APA, ASID, AWI, CMA, CSI, IFMA, IFRAA, IIDA, IMI, ASLA, MSPE, PAM, SAH, SDA, SLUC, SMPS, ULI, USGBC

### When

- November 8, 9, 10, 11, 2011
- Tuesday, Wednesday, Thursday, Friday
- **Exhibit Hall open on Tuesday, Wednesday and Thursday**
- Continuing Education all four days
- Awards Celebration and the 2011 Firm Award Presentation, Friday, December 2, 2011 at the McNamara Alumni Center.

### Exhibit Hall Hours

- Tuesday, November 8 4:30 pm – 7:00 pm
- Wednesday, November 9 11:15 am – 2:30 pm and 3:45 pm – 6:00 pm
- Thursday, November 10 11:30 am – 2:00 pm
- **No Exhibit Hall hours on Friday, November 11**
- Everyone welcome during each time period — free admittance — bring clients, colleagues, family, and friends.
- Fun, food, entertainment!

## Special Exhibits & Fun Things to See & Do

- Buy a Raffle ticket at the Minnesota Architectural Foundation booth
- Visit our new and improved RETRO Lounge or FUTURISTIC Lounge sponsored by Intereum
- Behold the 2010 AIA Minnesota Honor Awards
- AIA Minnesota's 25 Year Award Recipient
- A special exhibit of AIA Minnesota's Louis Lundgren Award
- The 2011 Ralph Rapson Travel & Study Fellowship Competition Display
- Preservation Alliance of Minnesota's "10 Most Endangered Buildings"
- "Dimensions Cropped" showcasing the talent of our Emerging Professionals
- View the work of MacDonald & Mack Architects, LTD, recipient of the 2011 AIA Minnesota Firm Award
- Visit the U of M College of Design Exhibit
- The Exhibit Hall — an education in itself!
- Booth Sleuths! Play to win Prizes!
- Citizen Architect Lounge with exhibits from Rebuilding it Right, Minnesota Design Team and others!
- Show your support and greet our Members in Transition when you visit the Member Services area.
- Member Services Area full of activities and ways to get more value for your dollar
- Food, Socializing...and MORE!

## Books for Sale and Book Signings at the Convention

- *The Architect's Guide to Small Firm Management* signed by author Rena M. Klein, FAIA (Event 2)
- *Thomas Phifer and Partners* signed by Thomas Phifer, FAIA (Event 9)
- *Material Design* signed by Sheila Kennedy, AIA (Event 28)
- *You've Got to be Kidding: How to Keep Your Job Without Losing Your Integrity* signed by author Nan DeMars (Event 55)

Books by University of Minnesota, College of Design Faculty

- *Towards Zero-Energy Architecture: New Solar Design* by Mary Guzowski
- *Matter in the Floating World: Conversations with Leading Japanese Architects and Designers* by Blaine Brownell, AIA
- *Architecture of Thought* by Andrzej Piotrowski
- *The Invisible Element of Place: The Architecture of David Salmela* by Thomas Fisher, Assoc. AIA
- *Ethics for Architects: 50 Dilemmas of Professional Practice* by Thomas Fisher, Assoc. AIA

## Hotel lodging

A block of rooms have been reserved for AIA Minnesota Convention attendees at the following hotel:

### Millennium Hotel Minneapolis

1313 Nicollet Mall, Minneapolis  
\$109 single/double through October 17  
1-800-522-8856; 612-332-6000  
[www.aia-mn.org/convhotel](http://www.aia-mn.org/convhotel)

## Convention Registration Cancellation/Refund Policy:

Cancellation requests must be received in writing on or before November 1, 2011. Please e-mail or fax your request to: [allardyce@aia-mn.org](mailto:allardyce@aia-mn.org); fax: 612-338-7981. There is a \$50 cancellation fee. Refunds (minus the cancellation fee) will be processed via your method of payment. No refunds will be offered after November 1, 2011. Questions? Contact Amber at AIA Minnesota, 612-338-6763 or by e-mail at [allardyce@aia-mn.org](mailto:allardyce@aia-mn.org).

Thank You!

# Special Program Features

45 Programs + 1 Member Congress & Keynote Address + 4 Keynote Speakers

## XL Programs

We are once again kicking off our Convention on Tuesday with three ExtraLong sessions allowing presenters and attendees to dig deeper into content.

Event 1 – ARE Review: Programming, Planning & Practice

Event 2 – Making Chaos Work for You: Keys to Small Firm Management presented by Rena Klein, FAIA

Event 3 – Thick as a Brick presented by Joseph Lstiburek, Ph.D.

But knowing that 3-hour programs are not for everyone, at the same time on Tuesday, Convention registrants can choose from our usual 75-minute and 90-minute programs.

## Sustainability – GBCI CE Hour Credits



We are pleased to announce that we are partnering with USGBC Minnesota to bring four programs that will provide not only AIA LU Hour credits, but also GBCI CE Hour credits. These four programs are scheduled throughout the Convention.

Tuesday – Event 6 – Solar Energy

Wednesday – Event 13 – Geothermal Technology

Thursday – Event 31 – Energy and Atmosphere and Renewable Energy

Friday – Event 47 – Sustainable Sites

## Healthcare



We are also very pleased to present a track of programs this year that addresses issues relevant to those practicing healthcare architecture. In our planning, we consulted a number of local healthcare architects as well as representatives of the national AIA's Academy of Architecture for Health. In order to provide practitioners with a better sense of where the marketplace is going, topics selected will address changing demographics and emerging trends. This track of five programs has been scheduled on Wednesday and Thursday of the Convention.

Wednesday

Event 15 – Changing Demographics and Health Care Reform — Friend or Foe

Event 20 – Making Healthcare Settings More Sustainable and Healthy

Event 26 – Emerging Trends in Healthcare that Impact the Planning, Design and Construction of Healthcare Environments

Thursday

Event 33 – Agile Interiors in Healthcare

Event 38 – Senior Living Design Trends and National Regulatory Change Initiatives

## Rich Conversations

And lastly, look for the programs identified as "Rich Conversations". As our Convention programs committee considers potential topics for program development, their conversations become a bit debate-like, with differing points of view being expressed. This year we decided to bring some of those "rich conversations" to the Convention. Panelists, a moderator and audience members will engage in a conversation where two clear sides (or more) are presented without necessarily reaching a clear conclusion.

Wednesday – Event 22 – The Legacy of Sustainability

Thursday – Event 34 – Preservation in a Modern World

Friday – Event 53 – Design and the Common Good

Enjoy reading through all the program descriptions and take note of the over 120 speakers who have agreed to share their expertise at our Convention. Choose to attend the programs you need as well as the programs that would be just fun to go to! Open your mind to new ideas and be prepared to discover ways in which to contribute to Framing our Future.



Daniel Green, AIA  
Convention Programs Chair

# Tuesday, November 8

## Event 1A — Continental Breakfast — FREE

8:00 am – 9:00 am

Please join us in Lounge A for a FREE continental breakfast sponsored by TOTO. Gunnar Baldwin, LEED AP, from TOTO will welcome everyone and give a brief introduction to their Strategic Partnership with AIA which encourages the inclusion of socially sustainable design in architecture's mainstream best practices for Good Design.

## Event 1 — An XL Program

9:00 am – 12:00 noon

### ARE Review: Programming, Planning & Practice

*Co-sponsored by the AIA Minnesota IDP/ARE Committee*

This program is a review course for those preparing to take the Architectural Registration Exam. The program is designed to introduce and prepare ARE candidates for the ARE 4.0 division entitled "Programming, Planning & Practice". The course will review the four content areas of Programming & Analysis; Environmental, Social & Economic Issues; Codes and Regulations and Project & Practice Management. The vignette, "Site Zoning" will also be thoroughly reviewed.

**Michael Meehan, AIA, LEED AP**, is an architect with BWBR Architects in St. Paul. Currently, he is the Professional Development Manager at BWBR. His work focuses on continuing education, aligning project assignments with individual career goals, and employee evaluation. Meehan's professional interests include Integrated Project Delivery, technology, and mentoring. Additionally, Meehan is active with intern and young architect issues.

**Rachel Riopel Wiley, AIA, LEED AP**, is a Project Architect with HDR Architecture in St. Paul. Professionally, her focus is on process development and methodologies for improving project execution using BIM technology. She has been involved with the AIA's IDP Committee throughout the past several years and is currently Co-Chairing the Emerging Professionals Committee to encourage professional development and registration in the state of Minnesota.

## Event 2 — An XL Program

9:00 am – 12:00 noon

### Making Chaos Work for You: Keys to Small Firm Management

2.75 LU Hours

*Co-sponsored by the AIA Minnesota Small Firms Committee*

Management in small architectural firms presents both challenges and opportunities. While firms with fewer than 20 members have the potential to maximize creativity and enthusiasm, they may also suffer from unpredictable workloads, uneven productivity, and lack of available resources. In this workshop, participants will learn management theory and practical applications designed to increase firm productivity and creativity, as well as improve the effectiveness of firm leadership. Through lecture, dialogue and interactive exercises, topics covered include Organizational Design; Human Resources & Leadership; Finance; Marketing; and Strategic Planning.

**Rena M. Klein, FAIA**, is principal of RM Klein Consulting, a Seattle-based firm offering strategic planning and management coaching to owners of small design firms. She is the author of *The Architect's Guide to Small Firm Management*, published by Wiley in 2010. She is a member of the AIA national Advisory Group for the Practice Management Knowledge Community and is executive editor of AIA's *Architects Handbook of Professional Practice*, 15th edition, slated for release in 2013. Klein is also Editorial Director of aecKnowledge, a company that provides credible, distilled, and practical knowledge to design and construction professionals in the form of skillfully produced on-line videos and web-based collaborative tools.

A book signing for Rena Klein's book *The Architect's Guide to Small Firm Management* is scheduled to immediately follow this program.

## Event 3 — An XL Program

9:00 am to 12:00 noon

### Thick as a Brick

2.75 HSW/SD LU Hours

*Co-sponsored by the AIA Minnesota Building Enclosure Council*

Fixing old buildings is pretty straightforward. Keep them from falling down, blowing away or burning. Keep the rainwater and ground water out of them. Then if you are so inclined you can make them airtight and insulate them making sure they can dry when (not if) they get wet. So how hard can this be? Although the physics are easy to understand, the implications are not. Saving energy (a good thing) makes buildings wetter longer (a bad thing). Insulating masonry mass wall on the inside increases the risk from freeze thaw damage. So can you do it? Yes. This session is how to do it and how to manage risk. But every now and then the right answer will be to do nothing.

**Joseph Lstiburek, PhD**, is a principal of Building Science Corporation and an ASHRAE Fellow. He is a building scientist who investigates building failures. Dr. Lstiburek received an undergraduate degree in Mechanical Engineering from the University of Toronto, a masters degree in Civil Engineering from the University of Toronto and a Doctorate in Building Science from the University of Toronto. He has been a licensed Professional Engineer since 1982.

## Event 4

9:00 am to 10:15 am

### BirdSafe Building Design

1.25 HSW/SD LU Hours

Architects and designers are creating an exciting array of sustainable design solutions in and around buildings that benefit native and migratory birds and other wildlife. Landscaping with native plants, restoring and protecting habitat, and prioritizing green space and views are just a few ways today's designs are achieving sustainability goals. Buildings affect birds in several unexpected ways; and surprisingly, sustainable design solutions have the potential to inadvertently harm wildlife. This program examines the hazards birds face from glazing collisions and other effects, the myriad solutions currently available to protect and enhance bird populations in and around buildings, and the compelling reasons to do so.

**Joanna Eckles** is the Bird Safe/Lights Out Coordinator for Audubon Minnesota, focusing on the issue of bird collisions with buildings. Eckles studied Natural Resources/Wildlife Science at Cornell University and Conservation Biology at UMN and has worked with birds or on behalf of birds for almost 25 years.

**Edward R. Heinen** is founder of Edward Heinen Architectural Consulting, focusing on construction specifications and sustainable design, with over 20 years of project experience. Heinen studied architecture at the Illinois Institute of Technology, is an Illinois licensed architect, and a certified Minnesota Master Naturalist.

## Event 5

9:00 am to 10:15 am

### Design-Build Delivery — Assembling Collaborative Teams

1.25 LU Hours

*Co-sponsored by the AIA Minnesota Council of Firms*

This program will explore why and how design-build teams are assembled from the perspective of the architect, the builder and owner and consider the potential benefits and risks for each party. The program will look at the criteria that are used to assemble teams and the performance expectations for the team members. Several examples will be presented that will explore how project size and type can affect the team process.

**Bake Baker, AIA, LEED AP**, Executive Vice President, Preconstruction Services, McGough Companies has 30 years of experience in the design and construction industry. He joined McGough in 2004 and now heads up their preconstruction services group, after 20 years as an architect and principal at HGA in Minneapolis. Baker is past president of DBIA – Upper Midwest and also serves on the ULI Minnesota Advisory Council and the Envision Minnesota Board.

**Nate Pearson, LEED AP**, Design Phase Project Manager/Corporate Market Sector Leader, Mortenson Construction has built his career around design-build projects in the private market sector. He prides himself on understanding the customer's needs while partnering with design and construction professionals to deliver quality results. Pearson works out of Mortenson's Minneapolis office and serves as secretary for the DBIA – Upper Midwest chapter.

**Ken Peterson, PE**, Associate Vice President / Public & Corporate Practice Group, is an experienced senior project manager with Hammel, Green and Abrahamson, Inc. in Minneapolis. His teaming approach and engineering

expertise have proven valuable in delivering complex design-build and multi-phased construction projects. Peterson is currently serving as the vice president of DBIA – Upper Midwest Region.

## Event 8 — Member Congress

12:15 pm - 2:45 pm

Member Congress and Lunch

### Event 6

10:30 am to 12:00 noon

Solar Energy

1.5 HSW/SD LU Hours and 1.5 GBCI CE Hours

Co-sponsored by USGBC – Minnesota Chapter

This workshop will explore the aspects of Solar Energy produced from photovoltaic (PV) panel installations on buildings. Attendees will review the design strategies, site selections, and the installation implementations of photovoltaic solar panels. This program will cover all aspects of PV technologies from basic material science to installed system performance, and how renewable energy goals can be obtained from these technologies.

**David Williams, PE, LEED AP**, LHB Corporation, has 26 years of mechanical design experience. He has led many mechanical design projects, providing design and construction administration for multi-million dollar commercial, industrial, and institutional projects. Williams provides project management, engineering studies, temperature control design, master mechanical specifications development, energy cost analysis, and equipment procurement for clients.



### Event 7

10:30 am to 12:00 noon

Affordable Housing Design — Innovation Beyond the Façade

1.5 HSW LU Hours

Co-sponsored by the AIA Minnesota Housing Advocacy Committee

“Innovation Beyond the Façade” was created to improve and promote opportunities for design excellence in affordable housing in Minnesota. This four-month-long collaboration brought together local housing experts — architects, developers, and funders — to explore the unique challenges involved with creating high quality affordable housing. This session will offer highlights from that effort showcasing exemplary housing developments, key findings and specific recommendations for strengthening design opportunities in the future. In addition, panelists will talk about “Innovation Beyond the Façade” as a model for exploring challenging policy and design issues through facilitated discussions and collaboration.

**Kim Bretheim, AIA, LEED AP BD+C**, utilizes his more than 30 years of architectural experience in residential design to lead the LHB Housing Studio. His award-winning designs include a wide variety of housing types ranging from student housing, townhomes and condominiums, apartment buildings, and supportive housing to commercial and mixed-use developments. He is committed to historic preservation and has been instrumental in transforming many of downtown Minneapolis’ warehouses into living, work, and performance spaces for individuals and families.

**Rosemary Dolata, AIA, LEED AP**, describes herself as a socially conscious architect. Her primary areas of focus are affordable housing and sustainable design. She has been an active participant in AIA Minnesota’s Housing Advocacy Committee and Search for Shelter charrettes for 20 years. In 2009 she received an AIA Minnesota Young Architects award. In addition to her roles with local design firms, Dolata has experience as a university instructor and nonprofit housing developer. She is currently working as an independent consultant.

**Abbie Loosen** joined Project for Pride in Living (PPL) in 2008 as an Enterprise Rose Architectural Fellow. As Fellow, she has worked to foster the exchange of knowledge between the fields of architecture and community development, assisted PPL’s real-estate development team as sustainability advocate and expert, and served as a connector between PPL and the diverse communities we serve. Her roles include project design and specification, community design work, and project management.

**Eric Muschler** has been a Program Officer with the Region and Communities Program at The McKnight Foundation based in Minneapolis since 2006. He has worked to advance the field of community economic development and affordable housing over the past 20 years working in Cincinnati, Washington DC, Atlanta, and Detroit often developing public/private partnerships focused on this area of work. Most recently he served as Director of the Asset Building Policy Project and Michigan IDA Partnership (MIDAP) from 2001–06.

**Todd Rhoades, AIA, LEED AP**, is an architect, urban designer and adjunct professor at the University of Minnesota. As Vice President of Cermak Rhoades Architects, he is CRA’s Design Coordinator, involved in and supervising teamwork on affordable and market rate housing developments, supportive housing communities and historic renovations. Rhoades is currently participating in an integrated design process with Aeon, Mithun Architects from Seattle and a long list of construction and energy consultants on South Quarter IV, a net zero energy affordable and market rate housing project along Franklin Avenue in Minneapolis.

Keynote Address — Stand Up for the Profession



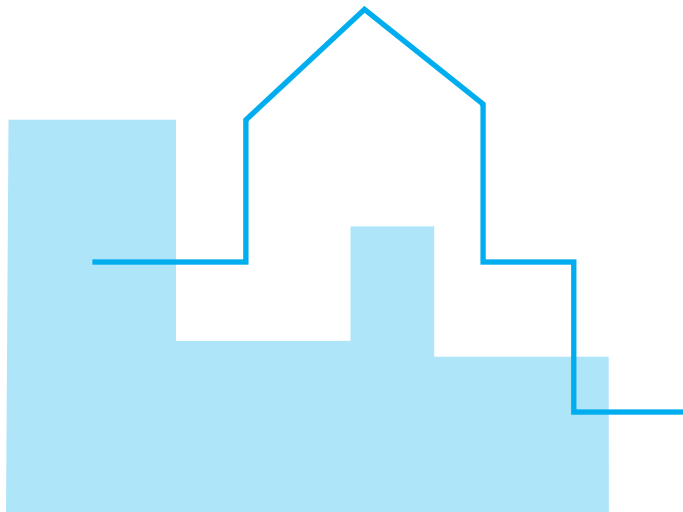
**Jeffrey Potter, FAIA**, 2011 First Vice President/2012 President-elect is vice president of POTTER Architecture, Landscape Architecture, Planning of Longview and Dallas, Texas. Potter founded the firm in 1983 and has a substantial resume of primary and secondary educational facilities. His wife, Shelley Potter, ASLA, is a landscape architect and is president of the firm. In 2007, they opened a studio in Dallas, where they live. Potter began his AIA career as president of the AIA Northeast Texas Chapter in 1998. He was president of the Texas Society of Architects (2004) and has been a long-time leader of and contributor to *Texas Architect* magazine. As a member of the national board of directors (2006–2009), he served on the Board Advocacy Committee, Secretary’s Advisory Committee, and was 2008 chair of the AIA/ACSA Topaz Medallion for Excellence in Architectural Education Jury.

There is no better advocate for our communities than architects. We are known for innovation, integrity, and ability to turn vague aspirations and seemingly impossible challenges into achievable blueprints for prosperity in our profession and our communities. It is our professional duty to speak up for the value of architecture and to spread the word that architects possess the education, training, experience, and vision to solve complex problems and design unique solutions. Potter will share his thoughts and ideas on how you can make a difference in ensuring architects are an invaluable resource to policy makers, elected officials and the public.



**AIA Minnesota President Steve Fiskum, AIA** will provide highlights from 2011. He will include updates on the state of the profession, the Public Relations Task Force and the findings from the Committee Chairs/Weave meeting. He will focus on the state of the membership and the value that AIA Minnesota provides to its members. President-elect Jon Buggy, AIA will present his focus and direction for 2012.

The election of officers for 2011 will be conducted. Presidential Citations for exceptional work by AIA Minnesota members will be presented. Steve Fiskum, AIA is Chief Operating Officer for Hammel, Green and Abrahamson, Inc. and is 2011 President of AIA Minnesota.



## Event 9 — Keynote Address

3:00 pm – 4:30 pm

### The Work of Thomas Phifer and Partners

1.5 LU Hours



**Thomas Phifer, FAIA**, founded Thomas Phifer and Partners in 1996. The firm approaches Modernism from a humanist standpoint, connecting the built environment to the natural world with a collaborative, interdisciplinary process from beginning to end. Their portfolio is varied, with buildings and projects for public and private clients. Among these are a new building and 170-acre sculpture park for the North Carolina Museum of Art in Raleigh; the restoration and revitalization of historic Castle Clinton, a Lower Manhattan National Monument with a new performing arts addition; the United States Federal Courthouse in Salt Lake City which introduces a new architectural vocabulary to the city's historic district. The firm has also designed a number of private residential commissions, including the Taghkanic House in New York, which received a PA Award from *Progressive Architecture Magazine*, and the Salt Point Residence, which has received both National and Chapter AIA Honor Awards.

Phifer has lectured at Harvard, Cornell, Penn, Columbia, University of Virginia, University of Florida, University of Miami, and Clemson University. In 1995 he received the Rome Prize in Architecture from the American Academy in Rome, and spent his residency at the Academy studying ecological design strategies based in methods from antiquity, a theme that has influenced much of his and the firm's work.

Prior to founding Thomas Phifer and Partners, Phifer was Senior Design Partner at Richard Meier & Partners, and was a Senior Design Associate at Gwathmey Siegel & Associates

A book signing for the monograph *Thomas Phifer and Partners* is scheduled to immediately follow this keynote address.

## Event 10 — Exhibit Hall — Free

4:30 pm – 7:00 pm

### Opening Night Party

This kickoff party is a fun way to start off this eventful week! Join AIA Minnesota President, Steve Fiskum, AIA and Convention Committee Chair Michelle Allen, AIA for the grand opening of our 77th Annual Convention! An exciting event is ahead with hors d'oeuvres, drinks and entertainment.

Be sure to stop by the Minnesota Architectural Foundation (MAF) Booth. Learn more about their efforts within the community and their scholarship programs. Also this year's MAF fundraiser is a raffle of iPad2s and NOOKs. Buy a ticket or two and improve your chance to win.

Don't forget to play "Booth Sleuths" to win marvelous prizes. Grab your card at the registration desk and collect six signatures from exhibitors to win in the raffle of prizes. Drawings will take place at the end of each Exhibit Hall session and you must be present to win your prize.

Interested in meeting AIA Minnesota's President Steve Fiskum or President-elect Jon Buggy? Would you like to chat with some of our committee chairs? Check out their "office hours" at the RETRO Lounge or FUTURISTIC Lounge, where you can meet to chat!

## Event 11

8:30 am – 10:00 am

### Project Soft Costs, Finance and Pro Formas

1.5 LU Hours

In the new economy, numerous projects that would once have been a sure thing are now stalled or abandoned due to lack of financing. As seasoned architects work to expand client services and emerging professionals look to understand the business, knowing all the costs associated with a project is of utmost importance. Before design, documents and construction, there are pro formas, soft costs and financing. What are they? How are they developed? What is mezzanine debt? What financing structures are available and how can architects identify opportunities to influence project cost? This program will explore the definitions and details of financing for a variety of project types and approaches through examples and discussion.

**Mark Fabel**, Development Project Manager for McGough Companies, is responsible for city planning and public works approvals, as well as negotiating public assistance packages, such as Tax Increment Financing and State Grant Funds. He leads masterplanning coordination for each site. Fabel's recent experience involves Bloomington Central Station, a mixed-use development on the Twin Cities' Hiawatha Light-Rail Line.

**Bart Zibrowski**, Executive Vice President-Development and Finance, McGough Companies, has more than 25 years of experience in the financial industry, providing financial services for real estate developments, and working in the real estate industry with closely held enterprises for more than 20 years. He specializes in real estate transaction structuring and financing in addition to tax planning and analysis for closely held entities.

## Event 12 — Free

8:30 am – 10:00 am

### You Called Me What? Is That Legal?

*Co-sponsored by the AIA Minnesota Emerging Professionals Committee and AIA Minnesota Government Affairs Committee*

What's in a title? What does it mean to say that you are an intern? a project manager? or an architectural designer? Our Minnesota statute has rules about what terms are appropriate for licensed and non-licensed individuals. These terms set the stage not only for how each is understood in the public eye and on proposal requests, but also for the respect that they garner within the profession. Naming of interns is a state-by-state issue and unlike Minnesota, at least 25 other states allow some form of the term "architect" in titling of interns. Is it time to push for change of our state statute? Come hear about the issue, discuss the details and debate the pros and cons of pushing for change.

**Gary E. Demele, AIA**, has for years worked on behalf of emerging professionals. He has attended two National Intern Summits, led the conversation on intern titling in the early 2000s as AIA Minnesota's State IDP Coordinator, and currently sits on the NCARB Board of Directors as Region IV Director and as the Liaison to the AIA National Associates Committee (NAC). Demele is Vice President of Architecture at Busch Architects, Inc. in Minneapolis.

**Meredith Hayes Gordon, Assoc. AIA**, has been the Associate Director on the AIA Minnesota Board for the past two years and a member of the Emerging Professionals Committee. She has been an intern with Perkins+Will for the past five years and is in the process of finishing her final ARE exams to become licensed.

**Nancy B. Hylden** is an Associate with the law firm of Faegre & Benson, LLP in Minneapolis. Hylden has 20 years of government relations experience representing trade and professional associations as well as businesses. She has represented AIA Minnesota for nearly 15 years.

## Event 13

8:30 am – 10:00 am

### Geothermal Technology

1.5 HSW/SD LU Hours and 1.5 GBCI CE Hours

*Co-sponsored by USGBC – Minnesota Chapter*

Attendees will explore the technologies involved with the design and delivery of various geothermal system types, as well as heat pump technologies, and other complementary system enhancements. The program will cover how geothermal systems can be implemented as well as costs/benefits. The presenters will share examples as well as performance of actual installations.



**Steve Lutz, PE, LEED BD+C**, became the General Manager of US Operations at TRAK International, a sub-division of Harris Companies, 3 years ago, developing their proprietary GeoExchange technology in the United States. Prior to this, Lutz worked as a Project Manager, Project Engineer and Engineering Director for Harris Companies for 13 years.

**Nick Rosenberry, PE, LEED BD+C**, has worked for Harris Companies for 5 years developing renewable energy and sustainability projects. In 2008 he was named Director of Sustainability. Additionally, Rosenberry is the Operations Manager for the Energy Services division of Harris Companies working to develop, engineer, and implement energy saving and sustainable projects.

## Event 14

8:30 am – 10:00 am

### Blueprint for Success: A Holistic Approach to Growth

1.5 LU Hours

Difficult times? Yes. Challenging to attract, nurture and engage clients? Absolutely. But building a stable and successful practice isn't impossible. Whether you are a sole-practitioner or CEO of a multi-million dollar firm, this session is designed to clear away the mental clutter, and organize your strategic thinking. This program will present a model for thinking clearly and holistically about business strategy. The presentation will include real world examples of how companies in the building industry have applied fundamental growth principles to make decisions with confidence, improve business results and maximize resources. Participants will take away a one-page, high-level blueprint for improving business results over the long-term.

**Ross Iverson** launched Bungalo Group with a long time colleague in 2009 and currently has an office in Minneapolis, and a business think tank in Vail, Colorado helping firms in the building industry grow their businesses. Iverson is involved with sales process development, business planning, family transitions, financial modeling, and marketing plan creation. Previously Iverson was President and owner of a design-build firm and led the firm to a sales growth of 228%, and cash flow growth from 50K to 1M annually over a 5-year period.

**Kristin Kowler** helps companies in the residential building industry build Growth Zones™ — business systems that create results. Her career began in New York City where she produced B2B communications programs for Fortune 500 clients. After returning to the Twin Cities she founded Kowler Associates, a business communications firm serving small businesses and entrepreneurs. As a trusted advisor, writer, designer, facilitator, instructor, strategist and team player Kowler helps companies in the building industry achieve their growth goals.

## Event 15

8:30 am – 10:00 am



### Changing Demographics and Healthcare Reform — Friend or Foe

1.5 LU Hours

The demographic profile is changing in the US and particularly in the Midwest. While this change has been a hot topic for several years, very few public policy initiatives have been taken to prepare for the impacts of the changing demographics. One of the early demographic impacts identified is the anticipated growth in health care services. Health care reform was developed in part to deal with the anticipated growth in Medicare expenditures. This program will review the changes occurring in Minnesota demographics, the changes resulting from health care reform and how this will change the demand for health care services and facilities.

**Nancy Rehkamp**, principal at LarsonAllen, specializes in market strategy, and program and operational planning for acute and post acute health care organizations. Her knowledge and experience provides clients with an integrative perspective to health care planning issues and opportunities. Rehkamp has 25 years of health care experience, including long-term care operations, acute care hospital administration, rehabilitation services, and home care and hospice management.

## Event 16

10:15 am – 11:30 am

### The Green Specification Process:

#### Evaluating Sustainability Information on a Project

1.25 HSW/SD LU Hours

**HSW**  
Health  
Safety  
Welfare

Project teams can often overlook the role that researched and coordinated construction specifications have on ensuring sustainable design intent, product performance, managing risk, and meeting new green jurisdictional requirements. This program will present an overview of the process for a green specification, see tools used to evaluate green products, understand the impact green code requirements have on product selection, and learn the basics for integrating green specifications into the project manual.

**Andrew Marolt, CSI, CCS, LEED AP BD+C**, has eleven plus years of experience writing specifications in large architecture firms and is charged with producing project specifications and sustainability coordination within the AECOM Minneapolis office. In addition, he is AECOM's Midwest Regional contact for "specifications", AECOM's contact for "green specifications", chairs the Minneapolis office's in-house sustainability task team, and serves on AECOM's international "Sustainability Leadership Group" as well as the AECOM North American "Specification Task Team".

## Event 17

10:15 am – 11:30 am

### Old is the New Green: Using Historic Rehab Tax Credits

Co-sponsored by the Preservation Alliance Minnesota

1.25 LU Hours

In a down economy, historic rehabilitation projects have continued to witness strong growth in large part due to the new State Historic Tax Credit/Grant. In one week alone in early 2011, the State Historic Preservation Office received four applications for state credits. Since its adoption in 2010, the State Historic Tax Credit/Grant has been a key incentive and integral part of financing more than 20 new projects at over \$200 million in investment. How has this incentive fit into developer pro forma and what does the Tax Credit/Grant mean for historic rehabilitation long term? This program will discuss how the Tax Credit / Grant is changing the feasibility of projects in a tough economy, and review five projects using State Tax Credits or Grants.

**Gina Ciganik** is Vice President and has been a member of Aeon's housing development team since 1997. She has broad experience in financing and developing mixed-use, mixed-income neighborhood revitalization projects and public improvement initiatives. Ciganik has a strong knowledge of rehab management with single-family homes, duplexes and apartments. She has successfully developed both large-scale and smaller neighborhood-scale projects.

**Owen Metz** is a Senior Development Associate for Dominion, a residential development and management company. Metz is responsible for assisting with new project development, acquisition, and financing. Since joining Dominion in 2006, Metz has also contributed in placing over \$40 million in permanent financing, \$30 million in construction financing, and \$30 million in equity while working on a variety of different project types.

**George Sherman**, Principal, Sherman Associates has planned and delivered multi- and single-family housing for more than 30 years. Sherman Associates, Inc. is an award-winning, Minneapolis-based, real estate developer specializing in the design, construction and financing of quality housing and commercial projects. As principal in developing more than 7,300 rental units, more than 1,200 for-sale housing units and over 600,000 square feet of commercial, the total value of properties he has developed exceeds \$2 billion.

**Natascha Wiener** is the Senior Design Reviewer for the Minnesota State Historic Preservation Office. Serving in that role since 2009, Wiener works with property owners using the new Minnesota Historic Rehabilitation Tax Credit and Legacy Grant programs to rehabilitate historic properties. Wiener ensures that projects adhere to the National Park Services' Secretary of the Interior Standards and acts as a liaison to the Park Service staff that administers the federal Historic Tax Credit program.

**Bonnie McDonald** is the Executive Director of the Preservation Alliance of Minnesota, Minnesota's statewide historic preservation nonprofit advocacy and education organization. Her specialization in public policy development is guided by her work to identify emerging trends and opportunities better integrating historic preservation into the development, design, and construction industries. McDonald will serve as the panel's moderator.



## Event 18

10:15 am – 11:30 am

### Homegrown Cities: Urban Planning to Feed the Community



1.25 HSW/SD LU Hours

Recent land use policy changes in the City of Minneapolis will soon make possible production scale agriculture within the city. Food, fiber and even fish could soon be grown and harvested within most neighborhoods. What are the impacts of urban agriculture on land use and community planning? How might new mixed-use development include farming? How could property values, air quality or environmental quality be impacted? A panel of local experts will review policies across the country, discuss recent local and national projects and review how food policy impacts community planning and urban development.

**Collie Graddick** has spent the last 19 years as a consultant for the Minnesota Department of Agriculture in the Pesticide and Fertilizer Management Division. He has spent the last two years volunteering as a partner in the Community Table Association of Cooperatives, whose mission is to create small business opportunities through building local community food systems by connecting producers and consumers using the cooperative model of transparency, equity and trust.

**Stephen P. Mastey, ASLA, LEED AP**, is an award-winning landscape architect who has a wide range of public and private sector experience. His design work demonstrates an understanding of the spaces and the people that experience them. He enjoys working at a variety of scales from intimate courtyard gardens to large multi-phase development projects that allow for collaboration with various design professionals. A driving factor in all of his work is blending ecologically appropriate design solutions into a cultured landscape.

**John Mesko** is the Executive Director of the Sustainable Farming Association of Minnesota (SFA). SFA is a chapter-based, statewide non-profit organization that supports the development and enhancement of sustainable farming systems through innovation, demonstration, education, and farmer-to-farmer networking.

**Aly Pennucci, AICP**, is a City Planner in the Department of Community Planning & Economic Development for the City of Minneapolis. She is leading the efforts to amend the Minneapolis Zoning Code in order to implement portions of the Urban Agriculture Policy Plan. Prior to her work with the City, she worked as the project coordinator for Design for Health, a collaborative project that serves to bridge the gap between research on community design and healthy living.

**Mark Riverblood** has served the City of Ramsey, Anoka County for 28 years in parks and natural resource planning, maintenance, and administration. He has composed and implemented numerous ordinances and elements of comprehensive plans over the last two decades which includes introducing edible landscapes to Ramsey's park system, a locally grown Farmers Market, a volunteer run Community Garden as well as plans for another in the city's pedestrian orientated, master planned community.

## Event 19

10:15 am – 11:30 am

### 2012 Economic and Construction Outlook: When Can We Expect a Recovery?

1.25 LU Hours

This economic recovery has been slow to unfold, and as a result, the construction sector has not seen much in the way of improvement. This program will look at conditions that architecture firms are facing, and discuss the outlook for key construction sectors and the implications for architecture firms.

**Kermit Baker, PhD, Hon. AIA**, is the AIA's chief economist. In this capacity, he analyzes business and construction trends for the U.S. economy and examines their impact on AIA members and the architectural profession. He originated the AIA's "Work on the Boards" Survey, a monthly assessment of business conditions at architecture firms, as well as the AIA Consensus Construction Forecast Panel, and writes a regular economics column for the AIA member electronic newspaper, *AIArchitect*.

## Event 20

10:15 am – 11:30 am



### Making Healthcare Settings More Sustainable and Healthy

1.25 HSW/SD LU Hours



The Green Guide for Health Care (GGHC) is the first sustainable building and operations tool for healthcare settings and is the foundation for LEED for Healthcare. Green Guide development was led by Robin Guenther, FAIA. Learn about how to use the best of the Green Guide and LEED tools to make your healthcare setting sustainable and healthy, and see examples of how healthcare buildings in the US and beyond are messaging sustainable and healthy design.

**Robin Guenther FAIA**, is a Principal of Perkins+Will. She co-coordinates the Green Guide for Health Care, served on the LEED for Healthcare Committee, and co-authored "Sustainable Healthcare Architecture," with Gail Vittori in 2007. In 2005, she received the Center for Health Design's Changemaker Award for her leadership and innovation in the design of sustainable healing environments. *Healthcare Design* magazine named her the "#1 Most Influential Designer in Healthcare" in 2009. Guenther's work has actively addressed the need for transformation of the industry and the profession, utilizing sustainability as a guiding framework for design.

## Event 21 — Exhibit Hall — Free

11:15 am – 2:30 pm

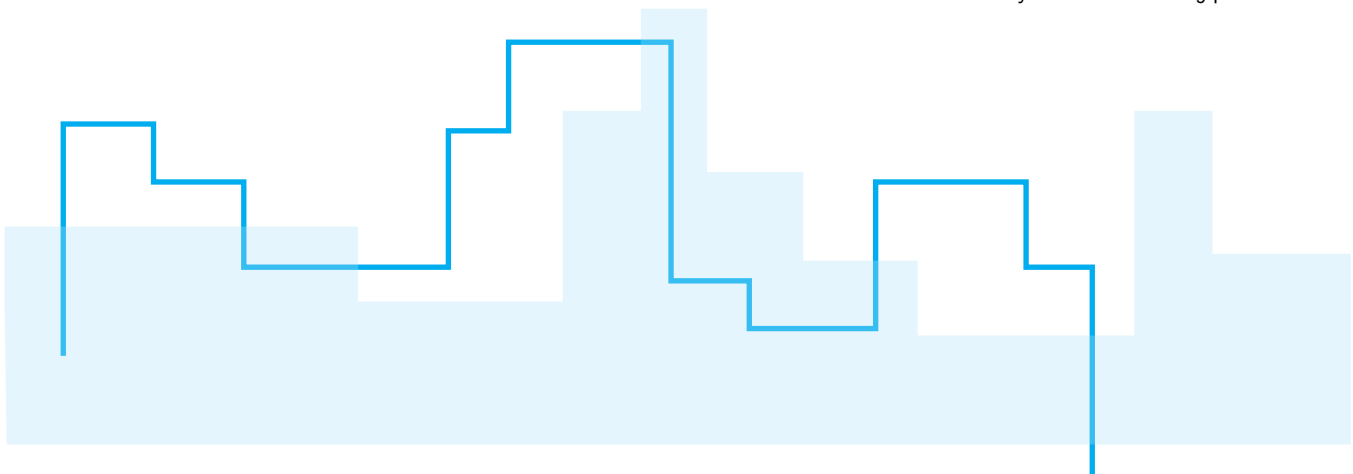
Come meet all of our exhibitors as they share their new and innovative products with you. The Exhibit Hall is a great place to catch up with old clients, meet new faces and network.

Be sure to visit the Minnesota Architectural Foundation's (MAF) exhibit and buy your raffle tickets. Help support their scholarship programs!

Have questions regarding your membership? Are you in transition with your job and need to update your contact information? Visit our Member Services lounge where the Membership Committee and our three local chapters can help with any questions you may have or chat with the Members in Transition Committee. Find out about our 23 committees and which one might be the best fit for you!

Interested in meeting AIA Minnesota's President Steve Fiskum or President-elect Jon Buggy? Would you like to chat with some of our committee chairs? Check out their "office hours" at the RETRO Lounge or FUTURISTIC Lounge, where you can meet to chat!

Don't forget to fill out your Booth Sleuth card and turn it in at the front of the Exhibit Hall. Chances are you'll win an exciting prize!



## Event 22 — Rich Conversations

2:30 pm – 4:00 pm

### The Legacy of Sustainability



1.5 HSW/SD LU Hours

This program will explore the legacy of the sustainability movement in architecture, its benefits and liabilities. Panelists and audience members will engage in a conversation and explore answers to

questions such as:

- Has the legacy of the sustainability movement been one of improving the performance and environmental impact of our built environment or has it led to misconceptions and unrealistic expectations?
- If society were to focus on energy reduction and conservation singularly without any emphasis on issues of water efficiency, material efficiency, indoor air quality, waste reduction and alternative energy sources would we accomplish just as much or more?
- Has “greenwashing” been a fundamentally negative result of the LEED system and therefore harmed the potential for creating a more sustainable profession? What is the history so far of past LEED Certified buildings? Are they performing as promised?
- Have humans exceeded the ecological threshold of the earth’s capacity and therefore any improvements we make at small scale individual projects represent a drop in the ocean?

**David Eijadi, FAIA, LEED AP**, a Principal at The Weidt Group with 30 years of experience in environmentally-appropriate design, leads the Energy Department’s consulting services for high-performance buildings. He is Chair of the Board of Directors for the Midwest Energy Efficiency Alliance and has served on the boards of the USGBC-Minnesota Chapter and the IESNA Committee for Daylighting Metrics. He is a frequent, nationally-recognized presenter.

**Kevin Flynn, AIA, LEED AP**, is an award-winning architect, green building consultant and leader within the sustainable design community. His firm, EcoDEEP, practices with an acute focus on sustainable design. Flynn provides sustainable design thinking, site impact analysis, carbon reduction, green building and LEED documentation for architects, builders, developers, corporations and municipal governments.

**Doug Pierce, AIA, LEED AP**, is an award-winning architect, university instructor and a published sustainable design strategist with Perkins+Will. Pierce has over 25 years of experience in sustainability with a focus in energy, green materials, green economics and the integrative design process. He has led 10 LEED certifications including Minnesota’s first Platinum project, Great River Energy Headquarters. He co-chairs the AIA Minnesota COTE and he is a Founder of the USGBC Minnesota Chapter.

## Event 23

2:30 pm – 4:00 pm

### Construction History: An Integrative Approach to Practice and History



1.5 HSW LU Hours

Architectural history has typically been isolated from both practice and technology, with the result that historic research has taken place without knowledge of the challenges faced by practicing architects, engineers and contractors. Three case studies will be presented including an early slip form construction of grain elevators; a presentation on how the development of skeleton framing in the late 1800s made air-rights construction possible; and a discussion of the Minneapolis Lumber Exchange fire of 1891 and the lessons contemporaries drew from it about the relative value of different forms of fire-resisting construction.

**Meghan Elliott, PE, Assoc. AIA**, is an Associate with Meyer Borgman Johnson Structural Design and Engineering in Minneapolis where she leads the preservation engineering group. She also founded and leads Preservation Design Works, a company dedicated to reusing buildings with heritage value through design, real estate development, and research. She serves on multiple organizations, including the Minneapolis Heritage Preservation Commission, Project for Pride in Living, and the Construction History Society of America.

**Donald Friedman, PE**, is president of Old Structures Engineering, PC, a structural engineering consulting firm for historic and old buildings, and has over 20 years experience in the investigation, analysis, and restoration of landmark buildings. Additionally, he has helped develop the field of conservation engineering — building evaluation and design that conforms to the core values of both structural engineering and historic preservation.

**Sara E. Wermiel, PhD**, is an independent scholar who received a doctorate in urban history and history of technology from the Massachusetts Institute of Technology. Her specialties are the history of nineteenth-century American technology, industrialization, and urbanization. The main subjects of her

research are structural fire protection and the development of new materials and systems for constructing buildings in the nineteenth century. Dr. Wermiel works as a historic preservation consultant and teaches a course at Boston Architectural College and is a visiting scholar at MIT.

## Event 24

2:30 pm – 4:00 pm

### Introduction to the International Green Construction Code



1.5 HSW/SD LU Hours

This program provides an overview of the critical concepts of the International Green Construction Code (IgCC). The IgCC is a comprehensive code that establishes minimum requirements for sustainable construction using both prescriptive and performance-based provisions as an overlay to the International Codes (IBC, IECC, IMC, IRC, etc.). It provides a framework linking sustainability with life safety and building performance.

**Peter Kulczyk, LEED AP Homes**, Technical Staff for the International Code Council (ICC) develops technical products, reference books, and training programs relating to the International Green Construction Code (IgCC), the International Residential Code (IRC), and the National Green Building Standard (NGBS). Prior to joining the ICC in 2007, Kulczyk was an instructor with the State of Minnesota Building Code Division, a municipal building inspector, and worked in various positions with five residential and commercial construction companies.

## Event 25

2:30 pm – 4:00 pm

### Community Re-Building in North Minneapolis



1.5 HSW LU Hours

PPL and MS&R lead the full renovation of 10 residential buildings spread across six city blocks in North Minneapolis: an area with a high concentration of poverty, crime, and social dysfunction. 62 units of affordable housing were created from 58 pre-renovation apartments to better fit the needs of the community. PPL is providing integrated services and community building expertise to assist residents to become more self-sufficient. Prior to renovation there was a 40% vacancy rate; after renovation there is a tenant waiting list. Learn how PPL and MS&R renovated housing stock, resurrected a neighborhood and are improving lives.

**Rhys MacPherson, LEED AP**, associate and project manager with Meyer, Scherer & Rockcastle, Ltd., has managed projects for numerous residences, community projects, and cultural facilities. MacPherson has also participated in the Audubon Neighborhood Association in Northeast Minneapolis for ten years helping to secure NRP funds, assess housing issues, support improvements and explore adaptive reuse options. Additionally, he has participated in Search for Shelter design charrettes, the PPL EcoVillage design charrettes, and the McKnight Foundation forum on affordable housing.

**Paul Mellblom, AIA, LEED AP**, is a Principal with Meyer, Scherer & Rockcastle, Ltd. Mellblom is also president of the Community Shares Minnesota board; a member of The Link and ReBuild Together Twin Cities; and a trustee on the Minnesota Museum of American Art Board. He has also assisted PPL in developing the Hawthorne EcoVillage in North Minneapolis. Mellblom received a 2005 AIA Minnesota Young Architects Award and was honored in 2007 with a Twin Cities Business Monthly Emerging Leader Award for his dedication and leadership in the area of community service.

**Chris Wilson** is Director of Real Estate Development for Project for Pride in Living (PPL). He is responsible for all commercial and housing development activity from project inception through completion. Additionally he oversees the Emergency Repair Program, which provides repair services to low income homeowners. Wilson has been with PPL since 1996, joining the organization in a Construction Management role after previous service overseeing the Summer Youth Program. Wilson has more than twenty-five years of project management and architectural experience.

## Event 26

2:30 pm – 4:00 pm



### Emerging Trends in Healthcare that Impact the Planning, Design and Construction of Healthcare Environments



1.5 HSW LU Hours

Healthcare reform has become an important issue. Those in healthcare must understand these issues as they evolve over the next few years. Challenges will include shrinking reimbursements, slower economic growth, and managing the cost of care for an older demographic. There is a convergence of trends that have a significant impact on the planning, design, and construction of inpatient and ambulatory environments. A new level of understanding and response is required for the future. Attend this program and learn about five emerging trends impacting the planning, design and construction of healthcare environments.

**Steven G. Jacobson, AIA, LEED AP**, is principal and Senior Vice President of HKS, Inc., a healthcare-specialized architectural firm. His responsibilities include business and financial operations, business development and client relationships in addition to providing project oversight and planning and design expertise on select healthcare projects. From conceptual visioning through design development, he interfaces with planning, interior and exterior design efforts and is actively involved in leading hospitals with future visioning.

**Deborah Sweetland, MBA, FACHE**, is a Vice President within the Clinical Solutions & Research group of HKS, Inc., specializing in healthcare strategy, operations improvement and facility planning. Sweetland is a senior healthcare executive with 25 years of clinical, operational, strategic planning, facility construction and process improvement experience in a variety of healthcare settings. Her background includes physician and board relations, lean process improvement, and strategy execution.

## Event 27 — Exhibit Hall — Free

3:45 pm – 6:00 pm

Looking for a new product for your next project? Or do you want to learn about new and innovative technology? Check out the Exhibit Hall to see the latest ideas and make a lasting connection. Show your appreciation to our exhibitors by stopping by to say hi!

Interested in meeting AIA Minnesota's President Steve Fiskum or President-elect Jon Buggy? Would you like to chat with some of our committee chairs? Check out their "office hours" at the RETRO Lounge or FUTURISTIC Lounge, where you can meet to chat!

Visit the Citizen Architect Lounge to learn more about what AIA Minnesota committees are doing in our community. View the projects of the Minnesota Design Team. See what the volunteers for Rebuilding it Right have been doing for those impacted by the tornado that hit North Minneapolis earlier this year. While you are there, check out volunteer opportunities within your community.

Make a stop at the Dimensions Cropped area and see the creative talents of architecture's emerging professionals.

Also, don't forget to play Booth Sleuths! Prizes will be given out at the end of each Exhibit Hall session, and you must be present to win! Grab a game card at the registration desk.

5:00 pm

### An Invitation to All Greater Minnesota AIA Members

A reception for all of our AIA Greater Minnesota members will be in the Member Services area of the Exhibit Hall. Please join us for refreshments and time to meet and greet one another.

## Event 28 — Keynote Address

6:00 pm – 7:30 pm

### Rethinking Practice: Kennedy & Violich Architecture Ltd.

1.5 LU Hours

Twenty years of a highly exploratory, prolific and provocative practice have made Kennedy & Violich Architecture (KVA) a national leader in redefining the roles and responsibilities of the architect. KVA expands issues of program, energy, and ethics to produce designs that merge form and performance. The work of KVA MATx has been exhibited at MoMA, the National Design Museum, the Rotterdam Biennial, the Vitra Design Museum and the TED conference in California. KVA Clients include RISD, the University of Pennsylvania, Harvard University, The City of New York, The City of Boston, The Minneapolis Parks Department, The Federal Republic of Germany, The Inter-American Development Bank and the Electrical Utility of Portugal in Brazil.



**Sheila Kennedy, AIA**, a founding Principal of Kennedy & Violich Architecture Ltd. (KVA) and Professor of the Practice of Architecture at MIT, has established a new model for an interdisciplinary design practice that explores architecture, digital technology and emerging public needs. Designated as one of *Fast Company's* emerging Masters of Design, Kennedy is described as an "insightful and original thinker who is designing new ways of working, learning, leading and innovating". Kennedy directs KVA's material research division MATx which engages creative work across the fields of architecture, design, electronics and material science. MATx has created designs for Siemens, Osram, Herman Miller, 3M, The North Face and the United States Department of Energy. The MATx Portable Light Project, a non-profit global clean energy initiative in the developing world received a 2009 US Congressional Award, the 2009 Energy Globe Award and a 2008 Tech Museum Laureate Award for technology that benefits humanity.

Kennedy is the author of multiple patents for the integration of digital technology in architecture and her work has been recognized by grants from the National Endowment for the Arts and the National Academy of Sciences. Kennedy's work is published widely in journals of architecture and design culture and has been featured on National Public Radio, BBC World News, CBS News, CNN Principal Voices, The Discovery Channel, *Wired*, *Science News*, *Elle Magazine*, *The Economist*, *The Wall Street Journal*, *Business Week* and *The New York Times*.

A book signing for the book *Material Design* is scheduled to immediately follow this keynote address.



## Event 29

8:00 am – 10:00 am

### Design Opportunities in Preserving the Existing Infrastructure

2.0 HSW/SD LU Hours

*Co-sponsored by the Midwest Masonry Promotion Council*

Architects have a creative opportunity in a slow economy to help restore and/or repurpose the existing built-environment.

Preservation is the “queen of green” and this program shows how masonry buildings designed to last over 100 years can continue to inspire generations as they continue to fulfill their original or new purposes. This program will share multiple examples ranging from micro to macro scale of how to save and maintain the heritage and quality of that which is already built.

**Craig Hinrichs, AIA, LEED AP**, has over 35 years of masonry project experience on a wide variety of building types in major Twin-Cities architectural offices. Hinrichs is currently the Executive Director of the Midwest Masonry Promotion Council (MMPC). The MMPC is a non-profit association of masonry contractors, producers and suppliers whose purpose is to promote the benefits of unit-masonry construction to the design community. Hinrichs leads all architectural marketing efforts and is responsible for the design and production of numerous AIA continuing education programs on sustainable masonry.

**Michael Hart** is the president and founding principal of American Masonry Restoration Corporation based in Minneapolis. Hart has 33 years of expertise in renovation, remodeling and restoration of historic structures, and was a featured speaker at the AIA Minnesota Stone Masonry Restoration seminar. He is the past president of the Minnesota Concrete & Masonry Contractors Association, a charter member of the Midwest Masonry Promotion Council, and is active in the Mason Contractors Association of America.

**Charles D. (Chuck) Liddy, Jr., FAIA**, is a Principal with Miller Dunwiddie Architecture and has nearly 40 years of experience. He joined Miller Dunwiddie as a Principal in 1992. Since 1978 he has led over 200 historic preservation projects — from modest farmhouses and barns to a nationally significant basilica — including scores of buildings and dozens of districts on the National Register of Historic Places. Liddy is currently a member of the National Trust for Historic Preservation, the Preservation Alliance of Minnesota, a Board member of Preserve Minneapolis, and co-Chair of the Minneapolis Development Review Advisory Committee.

**Robert Mack, FAIA**, is a founding principal of MacDonald & Mack Architects, a Minneapolis firm that has worked on preservation projects exclusively for the past 35 years. Mack is nationally recognized for his work with masonry preservation. Over fifty of his projects have had significant masonry restoration and preservation components. He is the author of the official National Park Service Preservation Briefs dealing with masonry cleaning and repointing, as well as “The Manufacture and Use of Architectural Terra Cotta in the United States” included in The Technology of Historic American Buildings.

**Thomas Meyer, FAIA**, is a founding principal and Principal in Charge for Meyer, Scherer & Rockcastle, LTD. With 40 years’ experience, Meyer is well-known regionally and nationally for his work with historic preservation. His career is threaded with a strong interest in the correlation between old and new that has resulted in work with historic district planning, building rehabilitation and restoration, adaptive reuse projects, new construction in historic districts, and museum and interpretive center design. Meyer teaches design at the University of Minnesota’s College of Design and received the Ralph Rapson Award for Distinguished Teaching.

## Event 30

8:30 am – 10:00 am

### Make Technology, Including BIM, Work for You

1.5 LU Hours

Using a series of case studies, we describe how BIM and other technologies apply to design, construction, and facility management as well as how to extract value from the data that building models provide. The case studies show how technology, including BIM, is applied to generate unprecedented value from early design to facility management and building life cycle analysis. We will also provide an overview of the various platforms and applications being used to deliver BIM projects and how a firm can manage the growing requirements of digital project delivery.

**David Fano** is a founding partner of CASE, a virtual design and construction and integrated-practice consultancy based in New York City. At CASE, Fano is primarily responsible for leading technology implementation, knowledge capture and sharing, social media initiatives and business development. He has previously worked at SHoP Architects, where he was Director of Technology

Research. Since 2006, Fano has been an Adjunct Professor at Columbia University’s Graduate School of Architecture, Planning, and Preservation where he teaches seminars and workshops focusing on the impact of technology on design processes.

## Event 31

8:30 am – 10:00 am

### Energy and Atmosphere and Renewable Energy

1.5 HSW/SD LU Hours and 1.5 GBCI CE Hours

*Co-sponsored by USGBC – Minnesota Chapter*

This program provides an in-depth overview of renewable energy and how to earn points in the LEED Rating Systems including New Construction, Existing Buildings: Operations & Maintenance, Core & Shell and Commercial Interiors. Attendees will be provided with a deeper understanding of how real world applications earn points through specific project examples.

**Beau Griffey** joined U.S. Energy in 2007. As Director of Commercial Services, Griffey heads a team of Account Managers who are responsible for all phases of client management. Additionally, he heads the Sustainability efforts for the company, working with clients on issues of energy management, biomass and biogas optimization services, energy conservation, compliance, and carbon disclosure programs. Griffey also is a Certified Energy Procurement Professional (CEP).

## Event 32

8:30 am – 10:00 am

### Learning from Disaster: Four Life-changing Projects in Haiti

1.5 HSW/SD LU Hours

*Co-sponsored by the University of Minnesota, College of Design, School of Architecture*

The earthquake that struck Haiti in 2010 dealt a devastating blow to an already beleaguered nation. This session looks at four projects developed on-site by UMN School of Architecture students and faculty in response to this disaster: two done in concert with Architecture for Humanity, one with a Haitian planning firm, and another developed by the Center for Sustainable Building Research in association with Minnesota-based partners. The projects to be discussed include a new orphanage/school, master plans for two communities, and a prototype house, all of which incorporate sustainable strategies.

**John Carmody** is the Director of the Center for Sustainable Building Research at the University of Minnesota. He has worked in building-related research for 30 years and is the author of several books on building design and construction. Carmody was one of the leaders of a team that developed the *State of Minnesota Sustainable Building Guidelines* required on State-funded buildings. Recently, he has been involved with the American Refugee Committee and other partners in developing permanent housing solutions in Haiti.

**Jim Lutz, AIA**, is a Lecturer in the School of Architecture at the University of Minnesota where he teaches classes in building technology and sustainability. He is the Co-Director of the MS-Sustainable Design program. He served as a faculty advisor for the University of Minnesota’s entry in the 2009 Solar Decathlon organized by the US Department of Energy. During the spring 2011 semester he led a graduate studio in Haiti, working with Architecture for Humanity on reconstruction efforts.

**Students:** Abby Kurlinkus, Amanda Pederson, Kaitlin Schalow, Cody Stadler, Emerson Stepp, Brent Suski

## Event 33

8:30 am – 10:00 am

### Agile Interiors in Healthcare

1.5 HSW/SD LU Hours

*Co-sponsored by Intereum*

This program is designed to educate architects on how to create more sustainable interiors for healthcare settings. The presentation will address waste management, lifecycle and loose fit benefits of healthcare spaces and evaluate the response of prefab to integrate with the base building through mass customization. Attendees will consider the ongoing responsiveness of agile walls to patient, staff, technology and maintenance needs in new and existing facilities and discover intelligent envisioning software to collect wisdom, communicate transparently with all stakeholders and ensure exact design is maintained.

**Kristin Moore, LEED AP** has been involved in Modular Architectural Interiors since 1996. She is one of the founding leaders of DIRTT Environmental Solutions, responsible for developing the company’s Healthcare division and initial environmental operations and philosophy. Previous to DIRTT, she led dealer development and training departments at SMED International/Haworth Inc. Moore has been involved in several LEED projects across Canada and the United States including the new Exelon Tower in Chicago (LEED Platinum) and Johnson County in Olathe, Kansas (LEED Gold).



## Event 34 — Rich Conversations

10:15 am – 11:45 am

### Preservation in a Modern World



1.5 HSW/SD LU Hours

This program will explore the benefits and difficulties of preservation in a Modern environment. Panelists and audience members will engage in a conversation and explore answers to questions such as:

- What determines the significance of a building and therefore the reason for its preservation? Is there a basis of thought behind establishing a building's significance or is it an "I'll know it when I see it" kind of thing?
- Does preservation lead to gentrification because its cost is so great that the only individuals that can afford rents after preservation are the wealthy?
- Are there places where modern buildings should not be built because they interfere with a desire to maintain a historic district?
- Should we look at districts and neighborhoods as museums honoring the past or as timelines representing many periods, their distinct styles and construction techniques?

**Charles D. Liddy, Jr., FAIA**, is a Principal at Miller Dunwiddie Architecture. For nearly 40 years, Liddy has built a career with a passionate focus on the preservation of our historic architectural and cultural treasures. He demonstrates architectural and preservation leadership through speaking, mentoring, volunteer work, and service to the public and non-profit organizations.

**Timothy G. Quigley, AIA** is principal of Quigley Architects, a small architecture firm in Minneapolis specializing in single-family residential work. He has served on the Board of Directors of the local chapter of the Society of Architectural Historians, the Frank Lloyd Wright Building Conservancy, a national preservation organization based in Chicago, and our local chapter of Docomomo\_US, a preservation group dedicated to saving the work of the modern movement.

**Michael Roehr, AIA**, is a founding principal of RoehrSchmitt Architecture, with twenty years of experience providing design leadership for a wide variety of project types including corporate, retail, educational, entertainment, residential, and mixed-use. He's worked as a designer on high-profile corporate buildings and interiors, and as lead designer for a national design/build and development company. He practices design as an inclusive, collaborative exercise considering the role of designer to be as much that of guide and facilitator as purveyor of vision and ideas.

## Event 35

10:15 am – 11:45 am

### The Paperless Office: Legal and Practical Considerations

1.5 LU Hours

*Co-sponsored by the Society of Design Administration, Minneapolis/St. Paul Chapter*

Managing information and documents within an architectural firm can be a daunting task. The difficulty of this task only increases as firms transition toward the "paperless" office. This program will explore the practicalities of converting to the "paperless" office and discuss applicable legal considerations. The program will focus on the importance of document retention, document management and ultimately document destruction.

**Mark J. Heley**, Partner, Coleman, Hull & van Vliet, PLLP is a construction lawyer with extensive experience representing design professionals in contract negotiations, risk management and litigation matters. He has represented design professionals on landmark projects such as the Metrodome, the Mall of America, Washington National Airport, Minneapolis-St. Paul International Airport, the Fargodome and the Hiawatha Light Rail Transit Corridor. He is a Fellow of the American College of Construction Lawyers and the College of Commercial Arbitrators.

## Event 36

10:15 am – 11:45 am

### Reinventing Fire: Bold Business Solutions for the New Energy Era



1.5 HSW/SD LU Hours

Oil and coal have built our civilization, created our wealth, and enriched the lives of billions. Yet their rising costs to our security, economy, health, and environment are eroding and starting to outweigh their benefits. Across all energy uses, efficiency and renewables now offer effective, reliable, and affordable replacements for fossil fuel. Rapidly scaling those solutions will define winners and losers between firms — and among nations. Now an independent synthesis offers a new vision whose whole-system thinking can revitalize business models and end-run Washington gridlock. Its competitive strategies show promising ways to win the clean energy race, not forced by public policy but led by business for durable advantage.

**James Scott Brew, AIA, FCSI, LEED BD+C**, is a Principal Architect with the Rocky Mountain Institute where he specializes in creating sustainable homes, buildings, campuses, and communities. He has over 3 decades of design and construction experience and has completed hundreds of projects in historic preservation and healthy, high-performance, low-energy homes and buildings extending from the U.S. to Asia, Australia and Europe.

## Event 37

10:15 am – 11:45 am

### Diverse Degrees: Architecture Grads Look to the Future through Design and Research



1.5 HSW LU Hours

*Co-sponsored by the University of Minnesota, College of Design, School of Architecture*

The School of Architecture in the University of Minnesota's College of Design recently changed its curriculum to include two M.S. degrees - sustainable design and historic preservation - in addition to the M.Arch. Final projects explore and expand the definition of design and architecture. Topics range from experimental modeling tools, to urban growth patterns in Lagos, Nigeria, to questioning what it means to live with fewer resources. A panel of recent graduates, joined by faculty and a practitioner, share their work and discuss how their final project contributes to the profession.

**Molly Eagen** is a recent graduate of the University of Minnesota, College of Design with both Master of Architecture and Master of Science – Sustainable Design degrees. Through her thesis work as well as current projects she seeks to understand the role that design can play to facilitate the inevitable changes which will occur in our societies' transition from the current fossil-fuel energy regime, to a more sustainable system.

**Wale Falade** is a recent graduate from the Masters of Architecture program at the College of Design, University of Minnesota. He was raised in the city of Lagos, Nigeria before relocating to Minnesota. Through his works, he seeks to find compelling confluences between architecture and urbanism, especially in gritty areas of American cities and organically formed cities in developing countries.

**Laurie McGinley** has had multiple careers as a photographer, a web designer and a life-long tinkerer. As a culmination of her Master of Architecture work, she set about building a stereoscopic, 4-D, motion activated, full scale, digital modeling tool. The task challenged her to manage over 150,000 photographs, build a tripod that measured 50' on each leg and suspend camera and electronic equipment 18' above the center of a two story atrium.

**John Wade** graduated from the University of Minnesota in the spring of 2011 with a Master of Architecture degree. Wade's focus has been on issues related to ecological design in urban areas. In the fall of 2010 he was a co-recipient of the Design Democracy Fellowship, awarded to individuals who have represented the value of equal design for all. And as an undergraduate he was awarded an independent travel fellowship from the Metropolitan Design Center to research inadequate housing and homelessness in Mumbai, India.

**Matthew Kreilich, AIA**, is a Design Principal of Julie Snow Architects. He is the heart of the firm's collaborative working model with active participation in all areas, from strategic business development to design detail resolution.

**Marc Swackhamer** is an Associate Professor of Architecture at the University of Minnesota. In his ongoing research, Professor Swackhamer examines the relationship between performance and ornament as specifically developed through digital production and fabrication techniques.

## Event 38

10:15 am – 11:45 am

### Senior Living Design Trends and National Regulatory Change Initiatives

1.5 HSW LU Hours



In recent years, great strides have been made in the creation of physical environments that are conducive to culture change models of long-term care. Yet renovation of existing facilities or new construction is often met with resistance from regulators representing all levels of government, including local building officials, state fire marshals and health department surveyors. Several national efforts are currently underway to make changes to portions of codes that would allow for the creation of true home environments and promote consistent interpretation and enforcement of standards. This program will identify the major trends in long term care design and the difficulties imposed by codes and standards. Participants will learn about current code revision efforts and explore how they can assist in these efforts through advocacy using established code revision procedures.

**Gaius Nelson** is president of Nelson•Tremain Partnership, an architectural practice dedicated to serving the design needs of older people and special needs populations. Nelson's professional focus is to promote relationship-enabling, resident-focused environments through design, education and policy advocacy. Nelson is an advisory committee member of the Society for the Advancement of Gerontological Environments (SAGE) and serves on the Guidelines for the Design and Construction of Health Care Facilities Health Guidelines Revision Committee. He has been instrumental in changing building and design codes inappropriately applied to facilities for older people through advocacy, legislative committee testimony and state rules modifications.



**Grace La** is principal of LA DALLMAN Architects, a practice co-founded with James Dallman in Milwaukee, Wisconsin. The practice has been awarded over thirty professional honors and several prizes in international design competitions. The Architectural League of New York named LA DALLMAN the 2010 Emerging Voice award recipient. Completed projects include the Miller Brewing Meeting Center, permanent science exhibits for Discovery World, the Marsupial Bridge, the UWM Hillel Student Center, and the Levy House. A Design Critic in Architecture at Harvard University Graduate School of Design, and a professor of the University of Wisconsin-Milwaukee, La was the 2005 recipient of the UWM Distinguished Undergraduate Teaching Award and the 2003 recipient of the Association of Collegiate Schools of Architecture New Faculty Teaching Award. The ACSA has also bestowed La with four Faculty Design Awards, which honor outstanding projects that advance the reflective nature of practice and teaching.



Kevin Miyazaki  
Levy House, Fox Point, Wisconsin

**David E. Miller, FAIA**, is a founding partner of The MillerHull Partnership, a seventy person firm in Seattle. In addition to over 200 awards for design excellence, the firm received the 2003 AIA Architecture Firm Award, which is given to one architectural design practice in the U.S. each year. In 2010 he received the AIA Seattle Chapter Medal, the highest individual award bestowed on an architect by the Chapter. Currently, Miller is Chair for the Department of Architecture at the University of Washington, where he is also a tenured professor of architecture. In 2005, Miller authored, *Toward a New Regionalism* (University Press) which promotes environmental architecture and showcases the work of Northwest architects from Portland to British Columbia. In 2010 he was Co-Chair of the National AIA Committee on the Environment (COTE) Advisory Group.



Laura Swimmer  
South Lake Union Discovery Center, Seattle, Washington

## Event 39 — Exhibit Hall — Free

11:30 am – 2:00 pm

Can't stop thinking about how great it would be to win an iPad2 or a NOOK at the Minnesota Architectural Foundation's (MAF) booth? Stop by their booth, buy a raffle ticket or two and support their efforts in promoting architecture within our community.

Come visit the chapters of AIA Minnesota and learn about your membership! AIA Minneapolis, AIA St. Paul and AIA Northern will be located in the Member Services lounge along with the Membership Committee and the Members in Transition Committee. Stop by to learn all of the great benefits of being an AIA Minnesota Member!

Interested in meeting AIA Minnesota's President Steve Fiskum or President-elect Jon Buggy? Would you like to chat with some of our committee chairs? Check out their "office hours" at the RETRO Lounge or FUTURISTIC Lounge, where you can meet to chat!

Don't miss out on your last chance to win big prizes with Booth Sleuths! Prizes will be announced at the end of the session, so stick around because you must be present to win!

Please give a warm THANK YOU to all our wonderful exhibitors joining us this year at Convention. They have worked hard all week to provide you with lots of information, connections and networking opportunities!

## Event 40 — Keynote Address

2:00 pm – 3:30 pm

### Jurors Show and Tell

1.5 LU Hours

*Co-sponsored by the AIA Minnesota Committee on Design*

This keynote address features three architects, serving as this year's AIA Minnesota Honor Awards jurors, who will talk about their practice and projects through a presentation of their work.

**Brian Healy** established his practice, Brian Healy Architects, in Boston in 1986. The designs produced by his office have received forty-seven national and regional design awards, including six within the *Progressive Architecture Award Program*. He was selected as an Emerging Voice by the Architectural League of New York and has received residencies from the American Academy in Rome, the MacDowell Art Colony, and Amherst College. The firm's work spans a diverse range of scales and settings — from installations to urban design — and has been extensively published and exhibited both here and abroad. For the past twenty years, Healy has also been active teaching architectural design at the Yale School of Architecture, the University of Pennsylvania, Harvard's Graduate School of Design, the Massachusetts Institute of Technology, and Washington University in Saint Louis.



Korean Church of Boston, the Children's Chapel and Community Center, Boston, Massachusetts

## Event 41 — Free

3:45 pm – 5:00 pm

### Announcement of Winners

*Co-sponsored by the AIA Minnesota Committee on Design*

Who won and why? The jury's selection of the 2011 AIA Minnesota Honor Award winners will be announced at this event. A facilitated discussion with the three jurors will explore the distinction of Minnesota architecture and a detailed analysis of their submitted work.



Brian Healy



Grace La



David E. Miller, FAIA

**Brian Healy** is principal of Brian Healy Architects in Boston, Massachusetts.

**Grace La** is principal of LA DALLMAN Architects in Milwaukee, Wisconsin.

**David E. Miller, FAIA**, is a founding partner of The MillerHull Partnership in Seattle, Washington.

**Thomas Fisher, Assoc. AIA**, is Professor of Architecture and Dean of the College of Design at the University of Minnesota. Fisher will facilitate this discussion.

## Event 42

3:45 pm – 5:00 pm

### An Introduction to Autoclaved, Aerated Concrete

1.25 HSW LU Hours

Autoclaved, Aerated Concrete (AAC) is a lightweight, precast building material used to make blocks, wall panels, floor and roof panels, and lintels. This presentation focuses on the history of AAC and its material properties: weight and density, compressive strength, thermal properties, fire resistance, sound attenuation and workability. Design applications and construction techniques are also covered. Learn which codes and standards apply to AAC and where to find them. Attend this program for a first-hand understanding of this material's nature.



# Thursday, November 10

**Mark Wickstrom** is the Minnesota Director for the International Masonry Institute. He is the first American certified as a Stone Mason Master and Carver by Staatliche Fachsule für Steinmetz Meister & Steintechniker. He has served as Apprentice Coordinator for BAC Local 1 MN/ND and IMI National Stone Training Coordinator and instructor. He is a 26-year BAC member.

## Event 43

3:45 pm – 5:00 pm

### Value to Owners from Commissioning, Re-commissioning, and Retro-commissioning

1.25 LU Hours

The design community is continually improving its ability to deliver high performance complex buildings to their clients. However, experience and research is telling us that these buildings do not maintain their expected level of efficiency over time. Commissioning, training, identifying performance metrics, monitoring performance, and re-commissioning (if needed) is the solution to declining performance of newer buildings. Many existing buildings were never commissioned initially and can now benefit from a retro-commissioning process. Architects, building owners, and engineers all have a role to play in maintaining a building's efficiency throughout its life cycle. Attendees will explore how architects can help their clients realize the full performance benefits of their new buildings when they move in and over the life of the building.

**Paul Haslach, PE, LEED AP BD+C**, is a mechanical and fire protection engineer and a Partner with 22 years of experience with Gausman & Moore. Haslach is licensed in 18 states. He has 15 years of experience with energy modeling for efficient building design. He was project manager for the 2010 Target EPA Act 2005 program for which he modeled over 80 buildings to verify energy performance compliance. Haslach is an active member of ASHRAE and the Society of Fire Protection Engineers.

**Randy Olson, PE, LEED AP BD+C**, is a Mechanical Engineer and Partner at Dunham. He has over 15 years of experience in the field with a focus on sustainable/high performance design. He was the engineering Project Manager on both the design and measurement and verification for Great River Energy Headquarters, Minnesota's first LEED Platinum certification. Olson is active in the industry as well, with membership and committee participation in IFMA and regularly presents on topics related to sustainability to architects, engineers, owners and other industry professionals.

**Derick Podratz, QCxP, LEED AP BD+C**, is Director of Commissioning for Gausman & Moore and has 14 years experience as a commissioning authority. Podratz is a Qualified Commissioning Process Provider (QCxP) with experience commissioning healthcare, military, office and university facilities. He recently completed the commissioning of the University of Minnesota, Duluth Swenson Science Building. Podratz is active in American Society of Heating, Refrigerating and Air-Conditioning Engineers (ASHRAE) and the Building Commissioning Association (BCA).

**Paul Riemer, PE, LEED AP BD+C**, is a Mechanical Engineer with Dunham. He has extensive energy analysis experience at different stages of a building's life including design phase, commissioning, measurement and verification, and ongoing performance. He has specialized expertise in energy modeling and sustainable engineered systems including geothermal heat pumps, displacement ventilation, and heat recovery. Riemer regularly presents on topics pertaining to building energy to various industry groups.

## Event 44

5:00 pm – 7:00 pm

### Reception

After the announcement of the 2011 Honor Award winners, join your colleagues at the reception to celebrate. There will be food and refreshments and live music by The Jazz Tradition. You'll have an opportunity to review all of this year's submissions. Take time to view an exhibit for this year's Firm Award — MacDonald & Mack Architects, LTD. Celebrate and enjoy award-winning architects at this AIA Minnesota Member Reception. And last, but not least, the Minnesota Architectural Foundation will draw winners of their raffle.

# Friday, November 11

## Event 45

8:00 am – 10:00 am

### The International Building Code: Understanding Chapter 7 and Applying Chapter 10

2.0 HSW LU Hours

Co-sponsored by W. L. Hall Co.

This will be a two-part program covering Chapter 7 and Chapter 10 of the International Building Code (IBC). Topics covered for Chapter 7, Fire & Smoke Protection Features, include an overview of the five walls and their definitions and opening protective guidelines as well as covering fundamental requirements such as shaft enclosures, horizontal assemblies, vertical opening protection, atriums, area separation, occupancy separation, and special requirements of Chapter 4.

Topics covered for Chapter 10, Means of Egress, include an overview of the 3-part means of egress system and general means of egress considerations as well as covering fundamental requirements such as exit access, exit and exit discharge, doors, travel distance, corridors, exit enclosures, horizontal exits and exit passageways.

**David Dodge**, McKeon Door Company, has been involved in the construction industry since 1975 with building code development and architectural design compliance becoming his passion. Since 1988, he has assisted architectural firms in understanding and implementing the provisions of the model codes as they pertain to fire and life safety. He has particularly focused on the fire door industry promoting cutting edge technology to resolve code compliance challenges. Dodge is a corporate member of the International Code Council (ICC) and has earned his Construction Document Technologist (CDT) from the Construction Specifications Institute.

## Event 46

8:00 am – 10:00 am

### Building Stories Vividly Engages Attendees in Stories of Practice

2.0 HSW LU Hours

Co-sponsored by the University of Minnesota, College of Design, School of Architecture

The cliff-hanger is a storytelling format employed by penny-dreadfuls, pulp-fiction, and action movie series. While stories from practice may lack car chases, they are full of charged human situations, financial drama and passionate design advocacy. Building Stories, adapted from a course currently taught at the School of Architecture, uses a cliff-hanger format. In this session, the practitioners tell stories from projects, highlighting a decision moment while giving all the information they had at that time. At the end of the Q&A period, the practitioner reveals what actually happened. Each story teller in this session will focus on a project drawn from their own experiences. Between them, they cover scales from detail to master planning, building types from cultural to academic and settings from local to global.

**Poul Bertelsen** founded MSAADA in 1980 in Minneapolis, together with 2 passive partners. MSAADA is incorporated under Chapter 317A under the Minnesota Statutes as a non-profit corporation. The firm's projects mostly include medical and educational facilities but also some housing, office buildings and churches extending to a total of 16 African, 9 Asian, 9 European and 5 countries in North & South America. MSAADA presently has branch or associated offices in Madagascar, Tanzania, Kenya and India and works often with local architects in other countries served.

**Renée Cheng, AIA**, is Head of the University of Minnesota School of Architecture. She has been recognized for teaching excellence with numerous teaching awards at the school, state and national level. Her research involves documenting case studies of buildings that integrate design with emerging technologies. Her recent IPD case studies used an interactive matrix to compare and contrast detailed contractual and collaborative practices. She served as 2009 President of AIA Minnesota and is a former member of the AIA National Board advisory group on Integrated Practice and the AIA National Board Knowledge Committee.

**John Cook, FAIA**, is a vice president with Hammel Green and Abrahamson. For most of his career, his work has focused primarily on museums and other spirited cultural projects. Cook specializes in executing complex designs that are aesthetically unique and technically challenging often involving one-of-a-kind building envelopes. He has played key roles in some of the Twin Cities most notable architecture of the past decade, including the Walker Art Center, the Frederick R. Weisman Art Museum at the University of Minnesota and the National AIA Award winning Bigelow Chapel in New Brighton, Minnesota.

**Nathan Knutson, AIA**, is a principal with VJAA where he has practiced since its founding in 1995. His seventeen years of experience have included all stages of the design process, including feasibility studies, master planning, and project coordination and management. In addition to collaborating on all of VJAA's major projects, he is also responsible for the office's fiscal management, scheduling, and contracts. Knutson was Managing Principal/Project Manager for the firm's National AIA Honor Award winning Charles Hostler Student Center at the American University of Beirut and Lavin-Bernick Center for University Life at Tulane University.

**James R. Larson**, Building Solutions, Inc., is a consultant who specializes in resolving technical aspects of building assembly. Larson consults with numerous architects, interns and firms throughout the architectural community. His consulting is consistently sought out by firms demanding reconsideration of conventional building assembly. His ability to carefully "draw out" the building detail in a very deliberate manner is a skill that is valued by many. He has consulted on 12 AIA Minnesota Honor Award winning projects, two AIA National Honor Award winning projects and two *Progressive Architecture* Award winning projects.

## Event 47

8:30 am – 10:00 am

### Sustainable Sites



1.5 HSW/SD LU Hours and 1.5 GBCI CE Hours

Co-sponsored by USGBC – Minnesota Chapter

This program provides an in-depth overview of the Sustainable Sites category of the LEED Rating System including New Construction, Existing Buildings: Operations & Maintenance, Core & Shell and Commercial Interiors.

Attendees will be provided with a deeper understanding of how real world applications earn points through an experienced instructor and specific project examples.

**Kevin Miller, PE**, is a Senior Civil Engineer and a certified Project Manager for Large Projects at URS Corporation. In 2010 Miller was promoted to the Regional Quality Officer, where he now oversees the Quality Management System requirements for seven URS offices in the Central Midwest Region. Miller's role as the Regional Sustainability Leader for the URS Central Midwest Region has led to vast project experience that includes the design of passive stormwater Best Management Practices (BMPs), such as green roofs, rain gardens, vegetated swales, pervious pavement systems and filter media.

**Joe Tarlizzo, LEED AP BD+C**, is Sustainability Coordinator for Hammel Green and Abrahamson. With more than 14 years of experience in architecture, engineering and construction, he has developed methods and processes for managing sustainable design efforts and leveraging those efforts into LEED certification. A strong relationship with the USGBC and a continuing eye on the latest developments in sustainable design enables Tarlizzo to meet client's sustainable design goals.

## Event 48

8:30 am – 10:00 am

### The Experience of Practicing Architecture in the Middle East

1.5 LU Hours

This presentation will feature the experience of two firms as they navigate their way through cultural differences and foreign business practices while working in the Middle East. Learn about daily life and construction in the extreme heat and sun. ATS&R will discuss their work with school projects including the assessment and the design of more than 100 schools in Jordan and design and furnishing K-12 schools in Saudi Arabia and the United Arab Emirates. The Perkins+Will team will present the Princess Noura bint Abdulrahman University for Women which is a new 30 million square foot campus in Riyadh, Saudi Arabia, for 40,000 full-time female graduate and undergraduate students. Presenters will share their perspective on the key ingredients to doing successful projects in the Middle East.

**Paul Erickson, AIA, REFP**, is President of ATS&R. Erickson's experience spans much of the Middle East including Jordan, Saudi Arabia, Kuwait, Iran and Pakistan. His 30+ years of experience encompasses all aspects of educational architecture, including educational specifications, long-range facility studies, master planning and facility design.

**Karen Huiett, AIA, LEED AP**, is Project Architect with ATS&R. Dedicated to her projects, Huiett worked in Abu Dhabi for three months. She has more than 10 years' experience with complex, educational facilities. Huiett was actively involved in this year's AIA Minnesota's Convention Programs Committee.

**Tammy Magney, AIA, REFP, LEED AP**, is Principal of ATS&R. She is a talented architect with more than 30 years' experience designing educational facilities. She managed the writing of the Abu Dhabi FFE Guidelines for the United Arab Emirates. She recently authored "Reshaping 21st Century Learning Space" for *American School & University* magazine.



**Andrew Kordon, Assoc. AIA**, has been with Perkins+Will since 1997 and currently serves in the roles of Planner, Senior Project Architect and Project Manager for projects in the Near and Middle East. Currently he is working on the planning of a new campus for the Ministry of the Interior in Riyadh and the Dr. Zewail City for Science and Technology in Cairo Egypt.

**Julie Oseid MacLeod** has worked in the design industry for over 20 years at firms including Perkins+Will, Shea Architects, Architectural Alliance and 10 years as a co-owner of 3 studios. Her strength has consistently been to build collaborative teams integrating the practices of architecture, interiors and graphic design establishing a coherent design process that engages the client.

**Steven Miller, AIA, LEED AP**, Principal, Perkins+Will, has 32 years of experience planning and designing award-winning educational and civic buildings. Miller's project responsibilities include leading the process of district wide educational visioning and master planning, facility planning and programming, architectural design and project management.

**Paul Neuhaus, AIA**, has been a senior designer with Perkins+Will for 8 years. He has been involved in regional higher education projects for public and private colleges and universities. More recently he spent 6 months working on the construction site of Princess Noura University in Riyadh, Saudi Arabia. Currently, Neuhaus is working on the design of a 300-bed hospital project for Mecca.

## Event 49

8:30 am – 10:00 am

### Strong Towns Curbside Chat

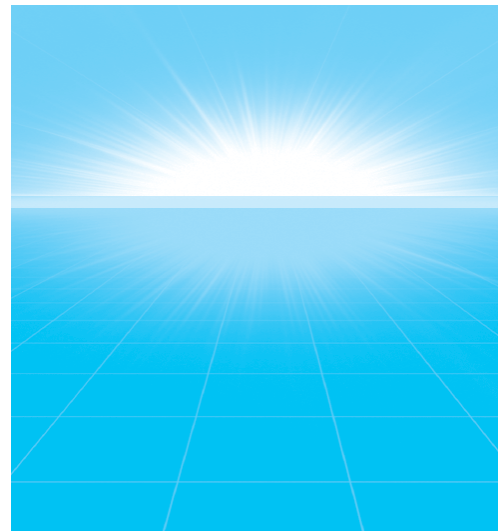
1.5 LU Hours

Co-sponsored by the Minnesota Design Team

This is a pivotal time for many communities. Years of unstable property values. Local government aid cut. Budgets stretched. The shifts and delayed maintenance of prior years are starting to show up on the ground. Local leaders are looking for answers. The standard approach to community development emphasizes *growth over resilience* but to truly do more with less we need to understand how we have built ourselves into decline. This program will provide background on the current financial crisis; identify the triggers that are forcing changes in the way we inhabit the landscape; discuss the dead ideas we need to overcome to renew prosperity; and look at what the coming new economy is likely to look like.

**Charles Marohn, PE, AICP**, is a co-founder of Strong Towns, a non-partisan, non-profit organization founded in 2009. The organization advocates for changes in our pattern of development and a complete understanding of the full costs of our methods of growth. Marohn grew up on a small farm in Central Minnesota and served for 9 years with the Minnesota National Guard. He is passionate about planning and small towns and currently lives just north of Baxter, Minnesota.

**Jon Commers** brings fifteen years of experience analyzing, developing and implementing policy and public finance strategies to his work at Strong Towns. As a consultant to cities and private parties involved in redevelopment — primarily in core urban areas — Commers' work has been devoted to understanding what distinguishes successful places. In addition to his work with Strong Towns, he represents St. Paul as a member of the Metropolitan Council, the Minneapolis St. Paul region's metropolitan planning organization and operator of its wastewater and transit systems.



## Event 50

10:15 am – 11:45 am

### Discovery Through Travel: a Ralph Rapson Legacy

1.5 LU Hours

*Co-sponsored by the Minnesota Architectural Foundation*

As one of the four programs funded by the Minnesota Architectural Foundation, the Rapson Traveling Fellowship honors the architectural legacy of Ralph Rapson. On the basis of a weekend juried design competition, this Fellowship is awarded to young Minnesota architectural graduates or practitioners, providing them opportunity to advance their education in architecture through foreign or domestic travel-study. Collectively the 17 fellows have journeyed through Spain, Italy, Germany, England, Scandinavia, Switzerland, China, Japan, Central and South America, Africa and India. This program features the travels of three of those fellows: Matthew Kreilich takes us to South and Central America, Creed Kampa to Japan and Laura Cayere-King to Germany.

**Laura Cayere-King, Assoc. AIA**, the 2010 Rapson Fellow, travelled to Germany with her focus on passive solar / energy efficient building technology. Cayere-King's recent work has been primarily in the residential market, and while at Albertsson Hansen Architecture, many of her projects won multiple Home of the Month, Rave and Builders Choice Awards. Most recently she is pursuing her interest in passive solar energy through her involvement in the Passive House Minnesota Organization.

**Creed Kampa, AIA**, is an Associate Vice President and project designer at HGA working in HGA's Sacramento office. Kampa has been the designer on many award winning projects including Good Shepherd Catholic Church in Elk Grove, California, and the American River College, Fine Arts Building Expansion, in Sacramento, California. Other significant projects include the Mind Institute at the University of California Davis and Fremont Medical Center, Yuba City, California. Kampa received the fellowship in 2006 and traveled to Japan.

**Matthew Kreilich, AIA**, a principal of Julie Snow Architects, received the fellowship in 2003 and traveled to Central and South America. Kreilich was the project designer on many of his firm's most significant recent projects, including the Land Port of Entries at Warroad Minnesota, and Van Buren Maine, and the new creative advertising offices for Knock, Inc. He was honored with the 2009 AIA National Young Architect Award and his work has received several AIA Minnesota Honor Awards.

## Event 51

10:15 am – 11:45 am

### 3x3: Building a Network of Mentors — EPC+FAIA Open Dialogue

1.5 LU Hours

*Co-sponsored by the AIA Minnesota Emerging Professionals Committee*

Architecture was founded on an ideal of advancing by apprenticeship — mentoring bridges between generations. While emerging professionals seek guidance to help navigate the uncertainties of advancing a career path, seasoned practitioners often look for insight into current trends and new technologies. In this session, attendees will be broken into groups of three with various levels of experience (from interns to AIA Fellows) and be guided through a series of discussions with other practitioners. The groups will rotate so every participant is exposed to a variety of perspectives within the field discussing topics such as qualities of leadership, benefits of developing networks, and the importance of cross-generational connections.

**Charles D. (Chuck) Liddy, Jr., FAIA**, is a Principal at Miller Dunwiddie Architecture. For nearly 40 years, Liddy has built a career with a passionate focus on the preservation of our historic architectural and cultural treasures. He demonstrates architectural and preservation leadership through speaking, mentoring, volunteer work, and service to the public and non-profit organizations.

**Erin M.S. McKiel, AIA, LEED AP**, is a senior Project Architect at BWBR Architects, past-president of AIA Saint Paul and a leader in the AIA Minnesota Emerging Professionals Committee. McKiel helped coordinate the AIA150 Saint Paul community service project to explore the challenges and opportunities surrounding construction of the Central Corridor light rail line. At BWBR, McKiel is a mentor for incoming staff as well as an advisor to project managers and clients on sustainable and performance design strategies.

**Rachael Spires, AIA, LEED AP**, is a Project Architect at The Foundation Architects. Spires is active in the AIA, serving as Co-Chair of the Emerging Professionals Committee, past Associate Director on the AIA Minneapolis Board, and serves on the Convention Committee. Spires helped found the Wednesday Night Draughting Club which is a monthly networking event for Emerging Professionals. For the last three years she has also served as a Mentor for the College of Design Mentor Program.

## Event 52

10:15 am – 11:45 am

### The Sustainable Story of the Epic Systems Corporation Campus

1.5 HSW/SD LU Hours



This presentation will focus on the unique story of the Epic campus and culture in Verona, Wisconsin, and the process through which sustainable strategies were explored, implemented and tested.

Sustainable technologies and practices used include: underground parking for 3,000+ cars minimizing disturbance to natural vegetation; 1,100 geothermal wells; on-site retention ponds; bio-swales; utilization of occupancy and daylight sensors; regionally manufactured and sourced materials; and use of vegetated roofs. Additionally, this program will discuss measuring building energy use with an understanding of how buildings perform by metering actual usage and comparing to baseline buildings and energy models.

**John W. Cuninghame, FAIA, LEED AP**, is Founder of Cuninghame Group Architecture, P.A. His leadership, insights and personal attention has led the firm to design some of the most innovative and exciting designs in the Midwest region. He also taught architectural design for 18 years at the University of Minnesota. He currently serves on the University's Alumni Board and guest lectures at the College of Design.

**Stephen Dickmann** has been the Chief Administration Officer for Epic Systems Corporation in Verona, Wisconsin since 1999. In this capacity he is responsible for the Campus and Facilities, for Finance and Accounting, and General Administration.

**Thomas R. Kylo, AIA, LEED AP**, is an Associate with Cuninghame Group Architecture, P.A. Kylo brings over 20 years of practice in the architectural industry. His role with the Epic project was as Project Manager and Sustainable Design Strategist. His responsibilities as project manager include client interface, professional staff supervision, coordinating engineering teams and other consultants, problem solving, and jobsite construction observation.

**Ari Tinkoff, PE**, is Principal, Mechanical Engineer for exp in Florida. He is in charge of quality control, overall project management, production, and coordination for large and complex technical projects. His extensive background in renovations, additions, and new construction projects throughout the United States brings the perfect mixture of experience and knowledge required for successful project delivery.

## Event 53 — Rich Conversations

10:15 am – 11:45 am

### Design and the Common Good

1.5 LU Hours

This program will explore the role of design as an economic driver or as a medium for creating a social benefit. Panelists and audience members will engage in a conversation and explore answers to questions such as:

- Is design's central purpose to benefit the greater good of humanity or to aid in the creation of wealth? Are the two mutually exclusive?
- Can architects make a living without serving the needs of wealthy and privileged? Are the wealthy, be they corporations or individuals, the only ones that can afford real architecture?
- Can architects make a living designing for the poor and downtrodden? Can true creative expression be achieved with minimal budgets and limited resources?
- The city was once seen as a public trust where even private buildings were designed with a sense of responsibility to the urban whole. Is that an attitude that can be recaptured in an era of economic inequality and conspicuous consumption?

**Rosemary Dolata, AIA, LEED AP**, describes herself as a socially conscious architect. Her primary areas of focus are affordable housing and sustainable design. She has been an active participant in AIA Minnesota's Housing Advocacy Committee and Search for Shelter charrettes for 20 years. In 2009 she received an AIA Minnesota Young Architects award.

**Trace Jacques, AIA**, is a partner and lead designer at ESG Architects in Minneapolis. His comprehensive quality driven design leadership focuses on a broad range of projects types ranging from: mixed-use/multi-family developments, hospitality, senior and student housing, to transit facilities, corporate sector buildings, and interiors projects. He has been lead designer on several award winning mixed-use/multi-family projects including Excelsior and Grand, the Westin Edina Galleria, and the St. Anthony Mills Apartments in Minneapolis to name a few.

**Matt Johnson, AIA**, serves as project manager and client leader with DLR Group on projects ranging from civic facilities to corporate offices and mixed-use developments where he continually focuses on developing design solutions that improve his clients' businesses and respond to industry and sustainable design best practices. Johnson's experience includes managing teams with numerous contractors and consultants and working under a variety of codes and conditions. He is especially adept at integrating mechanical and electrical engineering into the design process and managing fast-track projects.

## Event 54

10:15 am – 11:45 am

### Using Video for Dynamic Marketing and Documentation

1.5 LU Hours

*Co-sponsored by Architecture Minnesota Magazine*

Video can bring new energy to presentations and marketing efforts by combining voice and image, music and vision. Yet many architects are intimidated by what they perceive to be the time, money, and proficiency needed to start creating videos. How can architects best utilize video to attract and educate clients? What does it take to make an interesting video? Can a do-it-yourself approach really work? This panel of experienced professionals will describe their techniques and strategies for creating a successful video. The examples they share — from professionally produced videos to those filmed and edited by small-firm practitioners — will inspire you to create your own work of art. **Michael Huber, AIA, LEED AP**, is Principal of his own small firm located in the East-metro that includes a mixed portfolio of commercial and residential projects. He has jumped into the social media world as a way to engage with other industry professionals and with potential clients and incorporating short clips as a way to market, teach and just share things he finds fun and interesting. Huber does the videos and editing himself and is enjoying this creative way to engage people.

**Christopher Hudson** is the editor of *Architecture Minnesota*, a magazine that in 2011 dove into the deep end of video with Videotect — a wildly successful public video competition — and an all-new website designed in large part to showcase new architecture videos. Videotect 2 launches in late October.

**Matt Peiken** is a former longtime staff arts/features writer at the *St. Paul Pioneer Press*. In 2008, after a year as Managing Editor of the Walker Art Center's magazine, Peiken founded 3-Minute Egg (3minuteegg.org), where he produced and posted more than 330 short documentary videos about Twin Cities artists and arts happenings. Now a Regional Editor in Minnesota with Patch.com, Peiken regularly consults about video and works with local artists, arts organizations and architecture firms.

**Michael Smith** has been creating and producing television shows for twenty years. He created and executive-produced the long running architectural series, *Before & After* for HGTV, and the documentary, *Wild Houses* for TLC, which featured architects such as Bart Prince and Kendrick Kellogg. More recently he produced the national PBS series *Make: for TPT* in association with *Make Magazine*.

## Event 55 — Keynote and Lunch

12:00 noon – 2:00 pm

### Working with Integrity

1.25 LU Hours

Everyone in today's workplace finds themselves, from time to time, in the ethical crossfire of business activities. How can you handle these kinds of situations and still maintain your integrity? This presentation will shed light on how to handle ethical dilemmas while upholding your personal and professional standards. Through reality-based examples (some ripped from today's headlines), you will develop a fresh awareness of the meaning of "new accountability" in today's workplace. Learn how to minimize the factors that can lead to unethical behavior in your work environment. And, discover how to better navigate through your own ethical dilemmas while learning ways to help others do the same.



**Nan DeMars** is an internationally-recognized thought leader and practitioner in the area of workplace ethics. For more than 30 years, DeMars has demonstrated in all types of industries that good ethics result in good business outcomes. She is author of, *You Want Me to Do WHAT? When, Where and How to Draw the Line at Work* (Simon & Schuster). Her latest book was released in July, 2011: *You've GOT To Be Kidding, How to Keep Your Job Without Losing Your Integrity* (John Wiley & Sons). DeMars is President of Executary Services, a Minneapolis-based firm providing workplace ethics seminars and consulting as well as placement services for the C-suite executive assistant. She is Past International President of the International Association of Administrative Professionals, the Office Ethics columnist for *OfficePro Magazine*, and writes often for the *Minneapolis Star Tribune* and other publications.

A booksigning for the book *You've GOT To Be Kidding, How to Keep Your Job Without Losing Your Integrity* signed by author Nan DeMars is scheduled to immediately follow this keynote address.



# Friday, December 2

## Event 56 — Awards Celebration

6:00 pm – 11:00 pm

### An Evening of Celebration

Join President Steve Fiskum, AIA, in paying tribute to AIA Minnesota's Firm Award recipient, **MacDonald & Mack Architects, Ltd.** This year's celebration will be at the MacNamara Alumni Center. The evening will be a festive event in honor of our distinguished award winners.

#### Firm Award

The American Institute of Architects Minnesota is pleased to recognize MacDonald & Mack Architects, Ltd with its prestigious Firm Award for 2011. Given biennially, the award is presented to firms that have contributed to the advancement of the profession in the areas of technology, service and design.

For 35 years, the firm MacDonald & Mack has been the gold standard for preservation architecture in the state of Minnesota and the region. They have restored dozens of the region's treasured landmark structures, and returned to usefulness hundreds of other aging yet viable buildings.

MacDonald & Mack have been at the forefront of preservation practice, developing methodologies and techniques that have become the new standard for the profession. Through teaching, public speaking and writing, these advances in preservation knowledge have been readily and selflessly shared with peers and future practitioners.

The firm's reputation for meticulous research, and rigorous application of preservation standards has merited it numerous awards. These awards range from a special new AIA Minnesota preservation category in 1990 for the Purcell Cutts House, to the 2001 National Trust for Historic Preservation Award for Redeemer Missionary Baptist Church, to the 2004 Honor Award from Preservation Alliance of Minnesota for the Chaska History Center among so many other awards.

The Firm Award Selection Committee commented that MacDonald & Mack admirably met all three criteria for selection — advancement of the profession in **technology** through their work on masonry preservation techniques, **service** through decades of teaching in the school of architecture and **design** through meticulous attention to detail in restoration, preservation and re-use. MacDonald & Mack admirably represent the best of what the AIA Minnesota Firm Award represents.



MacDonald & Mack



Jerry Mathiason

Above: James J. Hill House  
Left: Minneapolis Municipal Building  
Below: Purcell-Cutts House



Minneapolis Institute of Arts, Bequest of Anson Cutts



Peter J. Sieger Architectural Photography

Above: Christ Church Lutheran  
Right: MacDonald & Mack Architects, Ltd.



Brandon Stengle

# Registration Form

Register online!  
[www.aia-mn.org](http://www.aia-mn.org)

**Pre-Registration ends November 1, 2011.**

**Receive a \$15 discount when you register online by November 1, 2011.**

Online registration features immediate feedback and confirmation on all events. Credit card payment is required for all online registrations.

Register early! All Pre-Registration ends November 1, 2011. Registration will resume on November 8, 2011 at the Convention Center at which time a late fee will be assessed (\$15 members and \$25 non-members).

## A. Please provide the following information. Please print or type.

Name \_\_\_\_\_

(If applicable, please indicate AIA, FAIA, or Assoc. AIA, etc.)

AIA Member # \_\_\_\_\_

Firm \_\_\_\_\_

Address \_\_\_\_\_

City, State, Zip \_\_\_\_\_

Phone \_\_\_\_\_

E-mail: \_\_\_\_\_

(required to receive confirmation)

**Fill in Total Amount Due below. Add subtotals from Sections C, D, and E.**

**Total Amount Due \$** \_\_\_\_\_

All Pre-Registration ends November 1, 2011. Registration will resume on November 8, 2011 at the Convention Center at which time a late fee will be assessed (\$15 members and \$25 non-members).

### Method of Payment (check one)

Check  MC  Visa  AmEx

Paying by credit card? **Why not register online at [www.aia-mn.org](http://www.aia-mn.org) and receive a \$15 discount?**

Account Number \_\_\_\_\_

Exp Date \_\_\_\_\_

(registration cannot be processed without expiration date listed)

Card Holder Name \_\_\_\_\_

## B. There are five choices for registration — check package & rate (online)

Member\*

Non-Member

- 1. Full Convention Registration**  **\$230 (\$215)**  **\$340 (\$325)**  
Enjoy four days of seminars during the Convention, including Events 8 and 55, Keynotes with Lunch. **Please indicate on Page 2 which seminars you plan to attend.** Event 56, Awards Celebration, is priced separately (see Section E below).
- 2. Create-Your-Own Package**  **\$55/ea**  **\$80/ea**  
**Online registrants signing up for two or more paid seminars will receive a \$15 discount from their total.**  
Choose any number of seminars. **Please indicate on Page 2 which seminars you plan to attend.** Events 8 and 55, Keynotes with Lunch have an *additional* fee of \$25 each. Event 56, Awards Celebration, is priced separately (see Sections D and E below).
- 3. Emeritus Member Registration**  **\$115 (No online discount.)**  
AIA Emeritus members can choose any number of seminars. **Please indicate on Page 2 which seminars you plan to attend.** Event 56, Awards Celebration, is priced separately (see Section E below).
- 4. Student Full Registration**  **\$25 (No online discount.)**  
**Copy of valid Student I.D. must accompany registration.**  
Choose any number of seminars. **Please indicate on Page 2 which seminars you plan to attend.** Events 8 and 55, Keynotes with Lunch, have an *additional* fee of \$25 each. Events 56, Awards Celebration, is priced separately (see Sections D and E below).
- 5. U of M Student Tuesday Registration**  **\$10 (No online discount.)**  
**Copy of valid Student I.D. must accompany registration.**  
Attend Event 9, Keynote Address and Event 10, Exhibit Hall Opening, as well as receive complimentary shuttle service between Rapson Hall and the Convention Center. This package will **ONLY** register you for Events 9 and 10. To attend additional events you must complete and pay for the Student Full Registration (see #4 above).

**\* Members of the following organizations may register at the member rate. Please circle your organizational affiliation.**  
AIA ACEC AGC APA ASID ASLA AWI BOMA CMAA  
CSI IFMA IIDA IMI MSPE PAM SAH SDA SLUC SMPS  
ULI USGBC

## C. Fill in subtotal at right

**Subtotal**

**\$** \_\_\_\_\_

**D. If you have selected Option 2 or 4 above,** please indicate if you plan to attend Events 8 and 55, Keynotes with Lunch, for an additional fee.

- Event 8 \$25  
 Event 55 \$25

**Subtotal**

**\$** \_\_\_\_\_

**E. Event 55, Awards Celebration \$65/person \$65 x \_\_\_\_\_ = \$**  
(Not included in any package — please indicate here if you plan to attend.)

Your name \_\_\_\_\_

Please indicate one meal choice (see invitation for details):

Chicken  Salmon  Vegetarian

Guest name \_\_\_\_\_

Please indicate one meal choice (see invitation for details):

Chicken  Salmon  Vegetarian

*For more than 2 people, please use the enclosed invitation RSVP card.*

Deadline to RSVP is November 23, 2011.

Name \_\_\_\_\_

**Register online, by mail or fax.**

- Online Registration (a \$15 discount): [www.aia-mn.org/convention](http://www.aia-mn.org/convention)
- Mail Pages 1 & 2 to: AIA Minnesota, 275 Market Street, Suite 54, Minneapolis, MN 55405
- Fax (credit card only) Pages 1 & 2 to: 612-338-7981

Questions? Call 612-338-6763.

**Do not fax or mail after November 1, 2011.**

**Indicate which events you plan to attend: (one only per time period)**

Closed seminars will be posted on the AIA Minnesota website at [www.aia-mn.org](http://www.aia-mn.org). Please note: Access to the Exhibit Hall is FREE to all.

**Tuesday, November 8, 2011**

*Program times may overlap. Choose carefully noting start and end times.*

- 8:00–9:00 am  Event 1A Continental Breakfast Sponsored by TOTO — Free
- 9:00–12:00 noon  Event 1 ARE Review: Programming, Planning & Practice
- Event 2 Making Chaos Work for You: Keys to Small Firm Management
- Event 3 Thick as a Brick
- 9:00–10:15 am  Event 4 BirdSafe Building Design
- Event 5 Design-Build Delivery — Assembling Collaborative Teams
- 10:30–12:00 noon  Event 6 Solar Energy
- Event 7 Affordable Housing Design — Innovation Beyond the Façade
- 12:15–2:45 pm  Event 8 Member Congress Keynote and Lunch
- 3:00–4:30 pm  Event 9 Keynote Address presented by Thomas Phifer, FAIA
- 4:30–7:00 pm  Event 10 Exhibit Hall — Free

**Wednesday, November 9, 2011**

*Choose only one program for each time period.*

- 8:30–10:00 am  Event 11 Project Soft Costs, Finance and Pro Formas
- Event 12 You Called Me What? Is That Legal? — Free
- Event 13 Geothermal Technology
- Event 14 Blueprint for Success: A Holistic Approach to Growth
- Event 15 Changing Demographics and Healthcare Reform — Friend or Foe
- 10:15–11:30 am  Event 16 The Green Specification Process: Evaluating Sustainability Information on a Project
- Event 17 Old is the New Green: Using Historic Rehab Tax Credits
- Event 18 Homegrown Cities: Urban Planning to Feed the Community
- Event 19 2012 Economic and Construction Outlook: When Can We Expect a Recovery?
- Event 20 Making Healthcare Settings More Sustainable and Healthy
- 11:15 am–2:30 pm  Event 21 Exhibit Hall — Free
- 2:30–4:00 pm  Event 22 Rich Conversations: The Legacy of Sustainability
- Event 23 Construction History: An Integrative Approach to Practice and History
- Event 24 Introduction to the International Green Construction Code
- Event 25 Community Re-Building in North Minneapolis
- Event 26 Emerging Trends in Healthcare that Impact the Planning, Design and Construction of Healthcare Environments
- 3:45–6:00 pm  Event 27 Exhibit Hall — Free
- 6:00–7:30 pm  Event 28 Keynote Address presented by Sheila Kennedy, AIA

**Thursday, November 10, 2011**

*Program times may overlap. Choose carefully noting start and end times.*

- 8:00–10:00 am  Event 29 Design Opportunities in Preserving the Existing Infrastructure
- 8:30–10:00 am  Event 30 Make Technology, Including BIM, Work for You
- Event 31 Energy and Atmosphere and Renewable Energy
- Event 32 Learning from Disaster: Four Life-changing Projects in Haiti
- Event 33 Agile Interiors in Healthcare
- 10:15–11:45 am  Event 34 Rich Conversations: Preservation in a Modern World
- Event 35 The Paperless Office: Legal and Practical Considerations
- Event 36 Reinventing Fire: Bold Business Solutions for the New Energy Era
- Event 37 Diverse Degrees: Architecture Grads Look to the Future Through Design and Research
- Event 38 Senior Living Design Trends and National Regulatory Change Initiatives
- 11:30 am–2:00 pm  Event 39 Exhibit Hall — Free
- 2:00–3:30 pm  Event 40 Keynote Address: Jurors Show and Tell
- 3:45–5:00 pm  Event 41 Announcement of Winners — Free
- Event 42 An Introduction to Autoclaved, Aerated Concrete
- Event 43 Commissioning, Re-commissioning, and Retro-commissioning
- 5:00–7:00 pm  Event 44 Reception

**Friday, November 11, 2011**

*Program times may overlap. Choose carefully noting start and end times.*

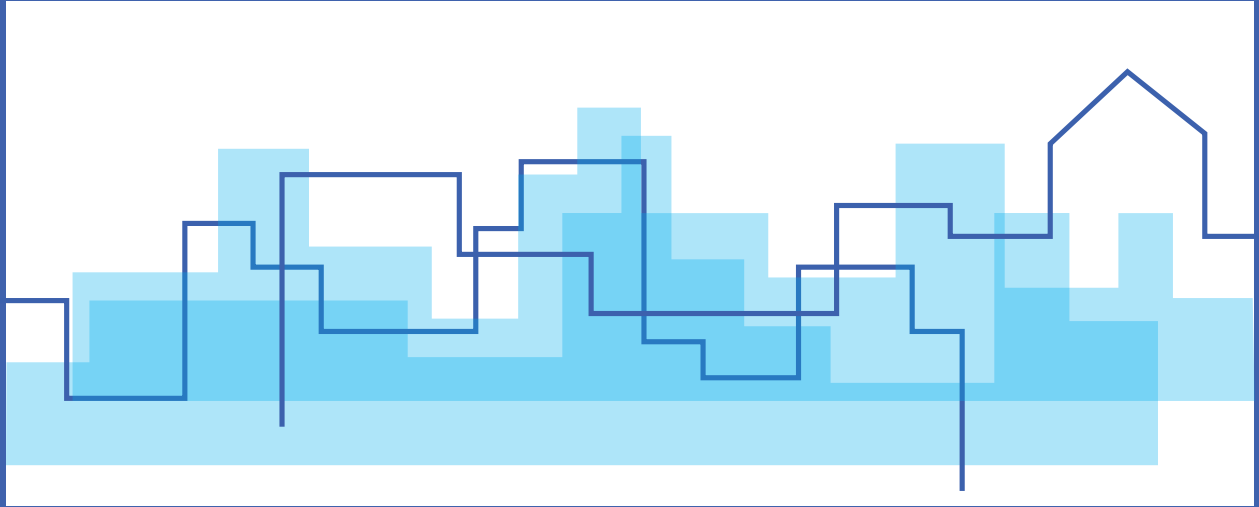
- 8:00–10:00 am  Event 45 The International Building Code: Understanding Chapter 7 and Applying Chapter 10
- Event 46 Building Stories Vividly Engages Attendees in Stories of Practice
- 8:30–10:00 am  Event 47 Sustainable Sites
- Event 48 The Experience of Practicing Architecture in the Middle East
- Event 49 Strong Towns Curbside Chat
- 10:15–11:45 am  Event 50 Discovery Through Travel: a Ralph Rapson Legacy
- Event 51 3x3: Building a Network of Mentors — EPC+FAIA Open Dialogue
- Event 52 The Sustainable Story of the Epic Systems Corporation Campus
- Event 53 Rich Conversations: Design and the Common Good
- Event 54 Using Video for Dynamic Marketing and Documentation
- 12:00 noon–2:00 pm  Event 55 Keynote Address and Lunch: Working with Integrity presented by Nan DeMars

**Friday, December 2, 2011**

- 6:00–11:00 pm  Event 56 Awards Celebration

**Convention Registration Cancellation/Refund Policy:**

Cancellation requests must be received in writing on or before November 1, 2011. Please e-mail or fax your request to: [allardyce@aia-mn.org](mailto:allardyce@aia-mn.org); fax: 612-338-7981. There is a \$50 cancellation fee. Refunds (minus the cancellation fee) will be processed via your method of payment. No refunds will be offered after November 1, 2011. Questions? Contact Amber at AIA Minnesota, 612-338-6763 or by e-mail at [allardyce@aia-mn.org](mailto:allardyce@aia-mn.org). Thank You!





**AIA Minnesota**

A Society of The American Institute of Architects

275 Market Street, Suite 54  
Minneapolis, MN 55405-1621  
612-338-6763

[www.aia-mn.org](http://www.aia-mn.org)