

City of Princeton, Minnesota

Mille Lacs & Sherburne Counties

2016 Search for Shelter Charrette Team – AIA Minnesota

Affordable Multi- Family Housing / Elderly Accessible Units

- Located on Rum River Drive (CSAH -29)
- Area of Lot Acres – approximately 3 acres
- Zoned R-3 Multi Family Residential
- 2 lots with potential with of 4 lots
- Minimum property width of 45 feet
- Set backs of 30 feet front & back yard setback 30 feet.
- Grade change of 24 feet slope drop back to river past building line.
- 30 feet height three story building.

Proposed Building will be three story and 36 units

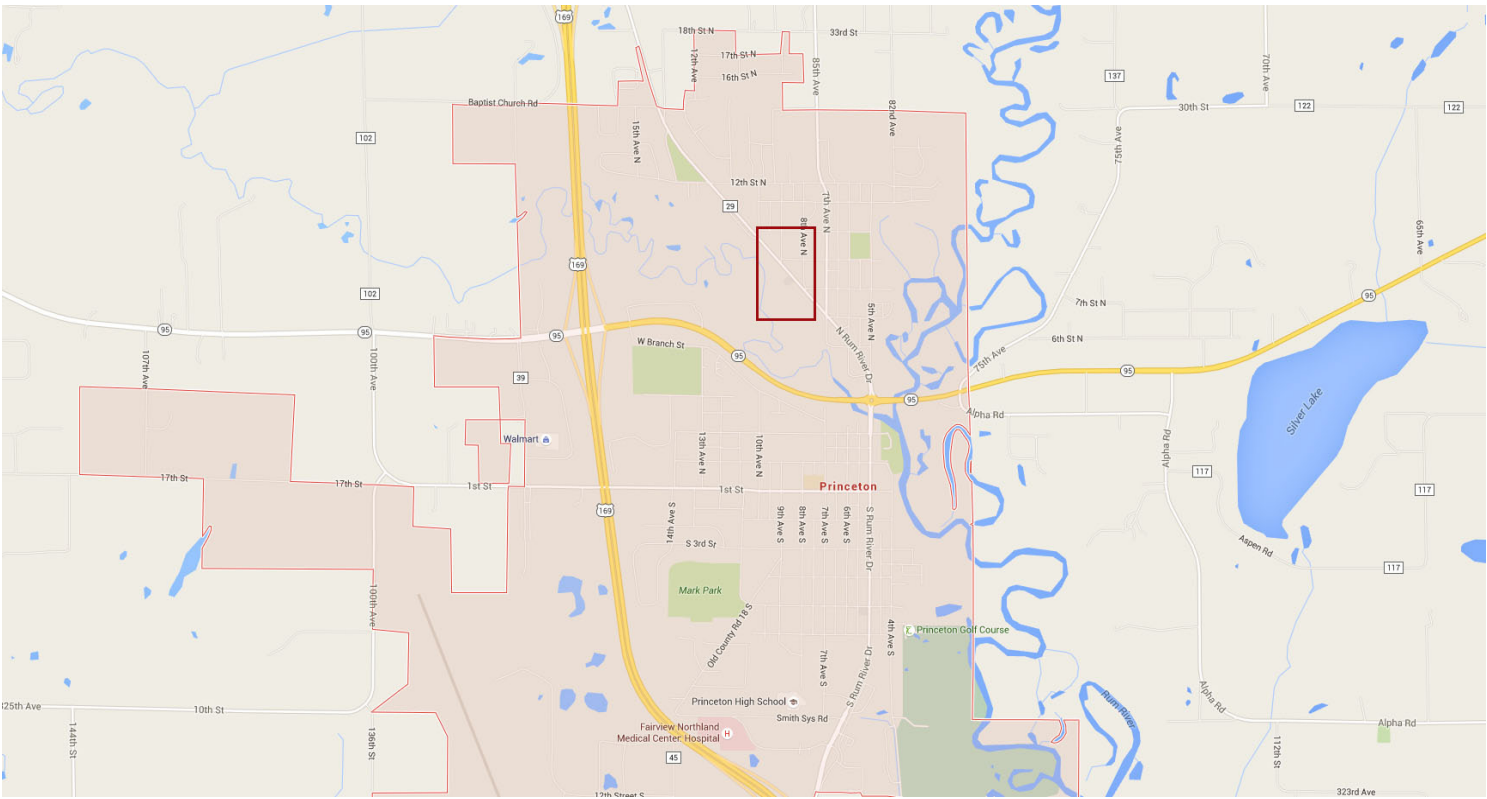
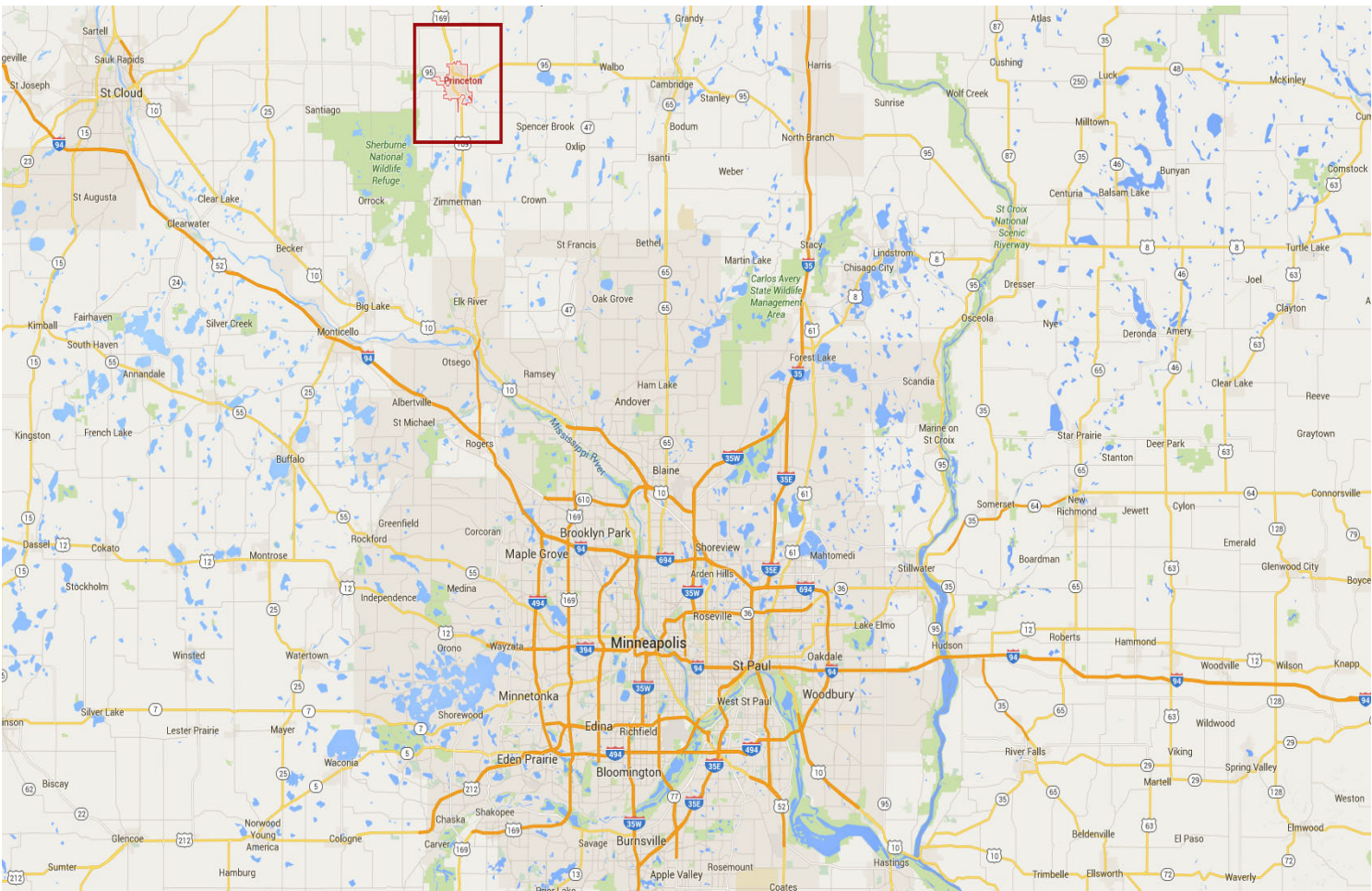
- One bedroom, Two Bedroom, and Three Bedroom units
- Accessible units with parking at grade at street frontage.
- All units oriented with views of river front / forest

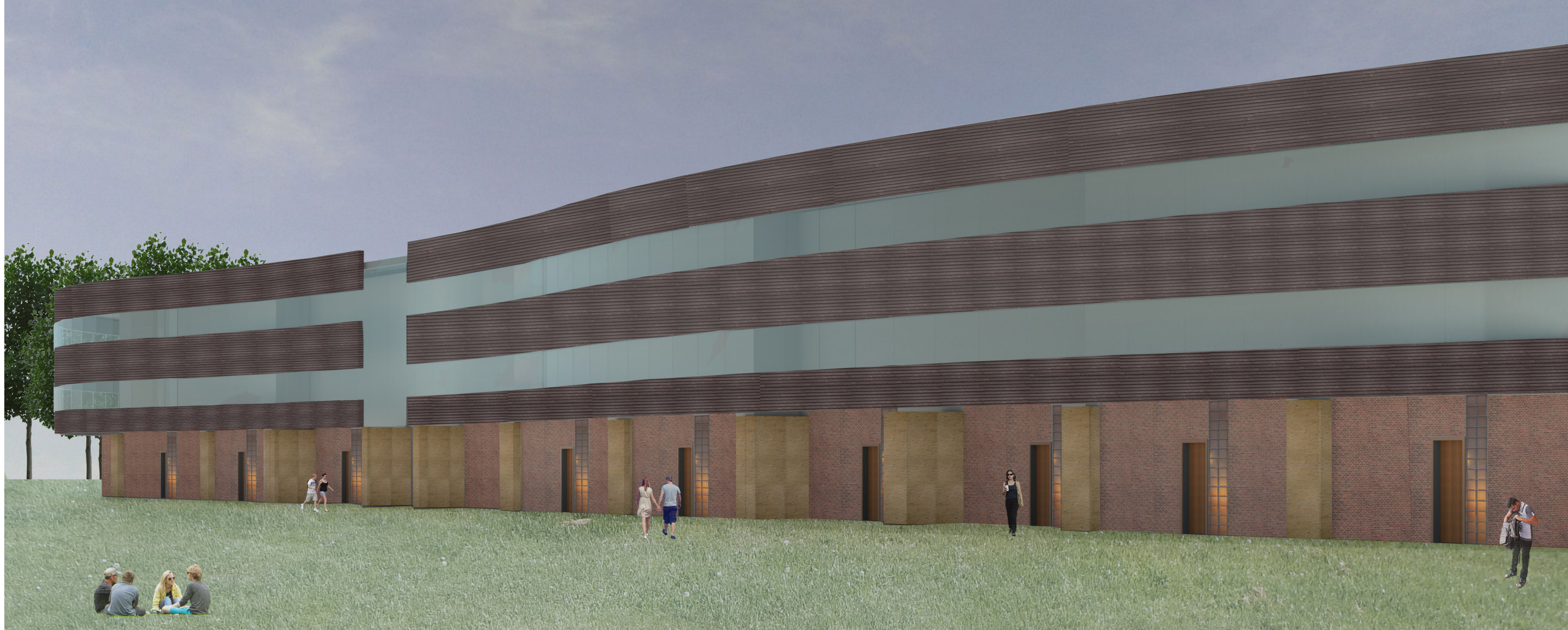
Building materials sourced from the Princeton area

- Crèam colored brick
- Wood Siding
- Cream concrete block
- Colored glass mosaic side lites
- Window wall facing city with color film tint – geometric patterns

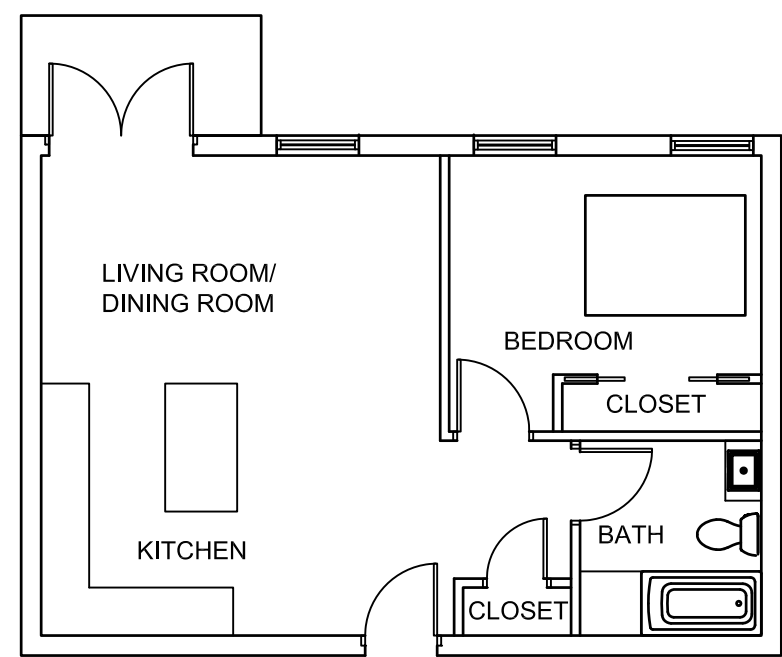
Prairie Restoration Landscape

- Prairie landscaping Used at street front of building to soften scale /
- Reduce car noise
- Flood Plane Forest trees will remain with some thinning
- Forest consist of Box Elder, Silver Maple, Buck Horn, Honey Suckle, Cherry, Aspen Cottonwood, river bank grape vine, stinging nettle

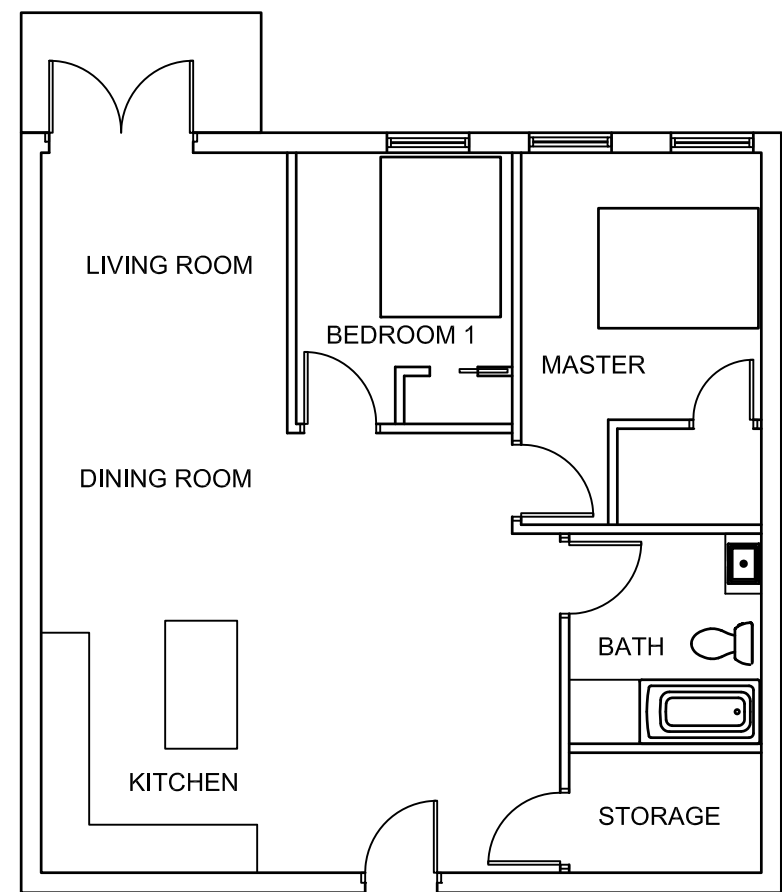




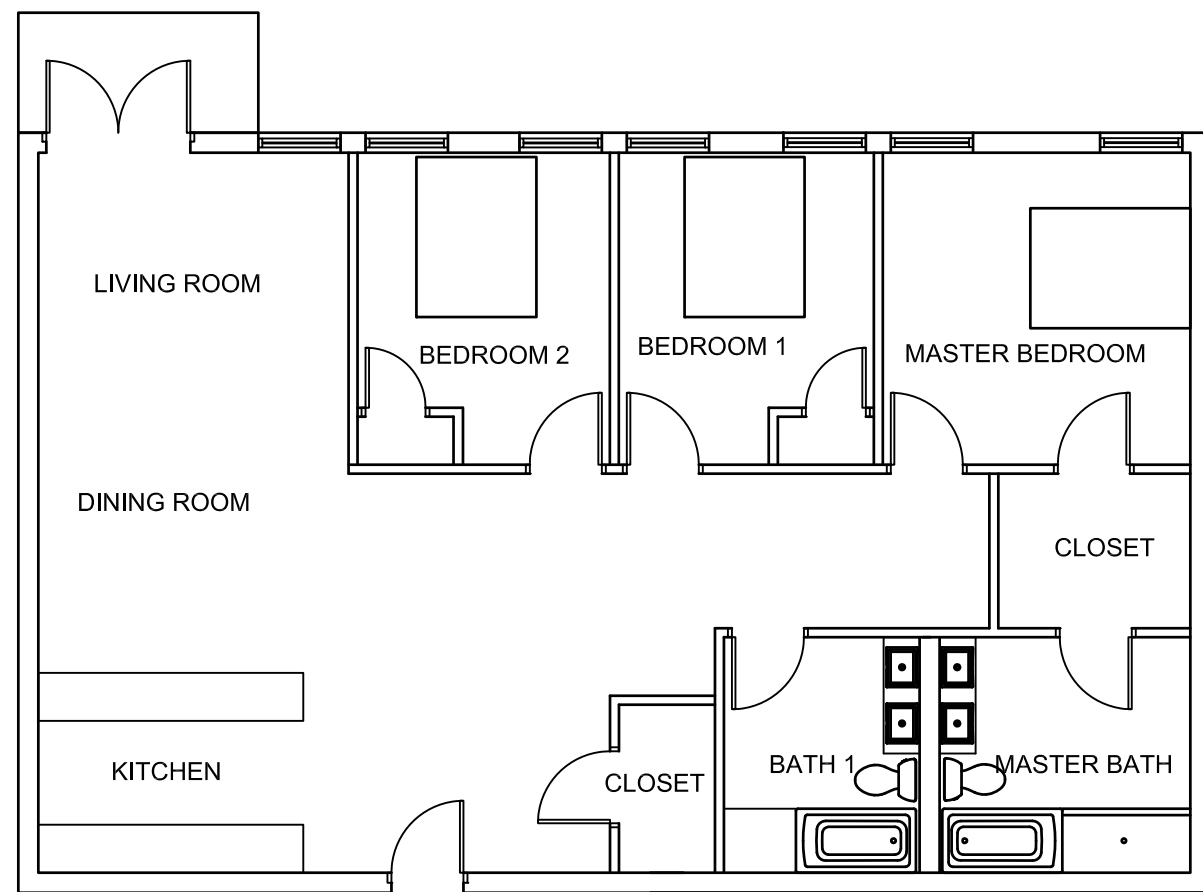
AIA MINNESOTA - 2016 SEARCH FOR SHELTER DESIGN CHARRETTE
SCOTIA HOLMGREN, BRIAN WEINHOLD, THERESA BIXLER, HOLLY BURLEY, LIZ KUTSCHKE



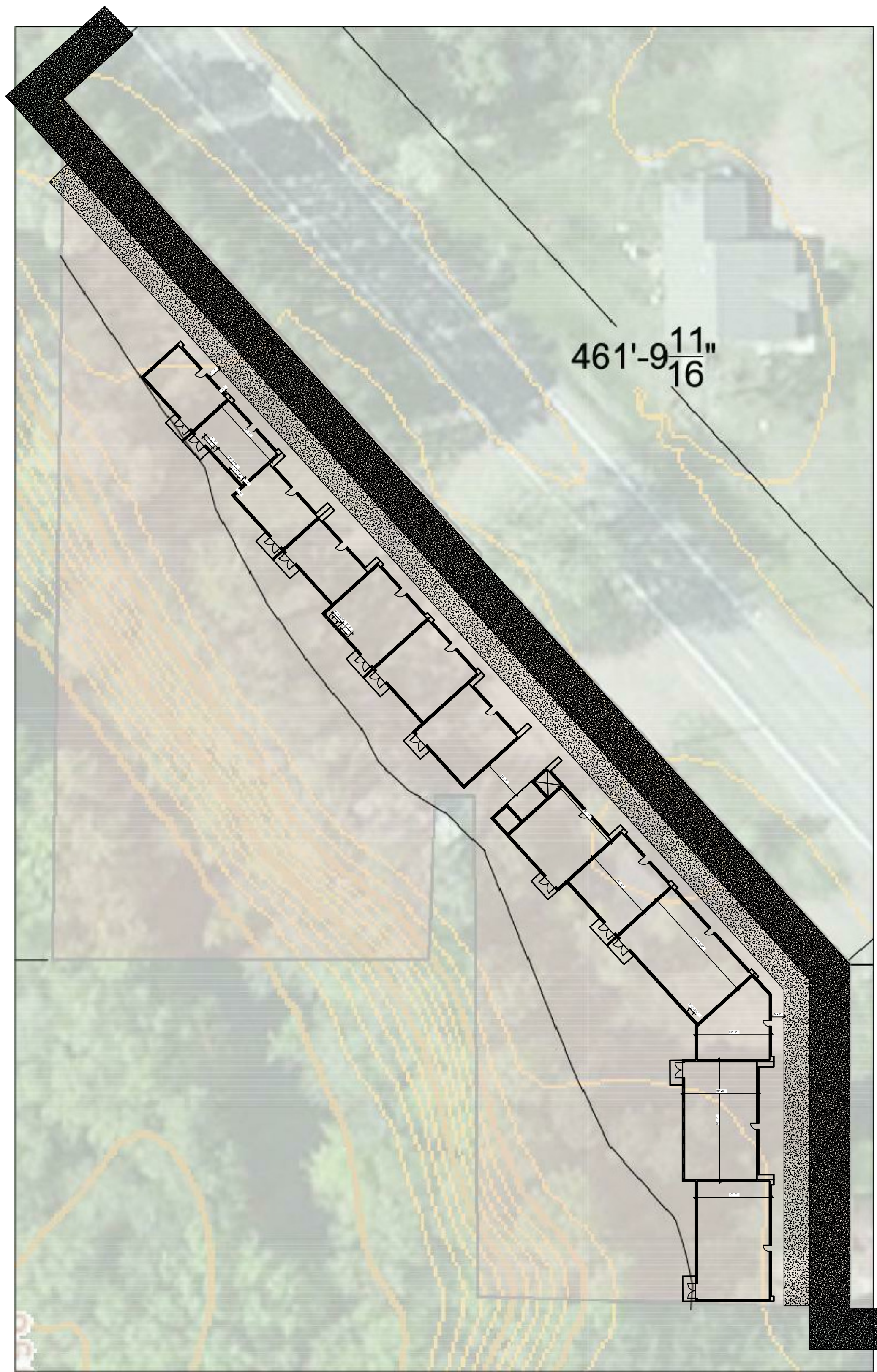
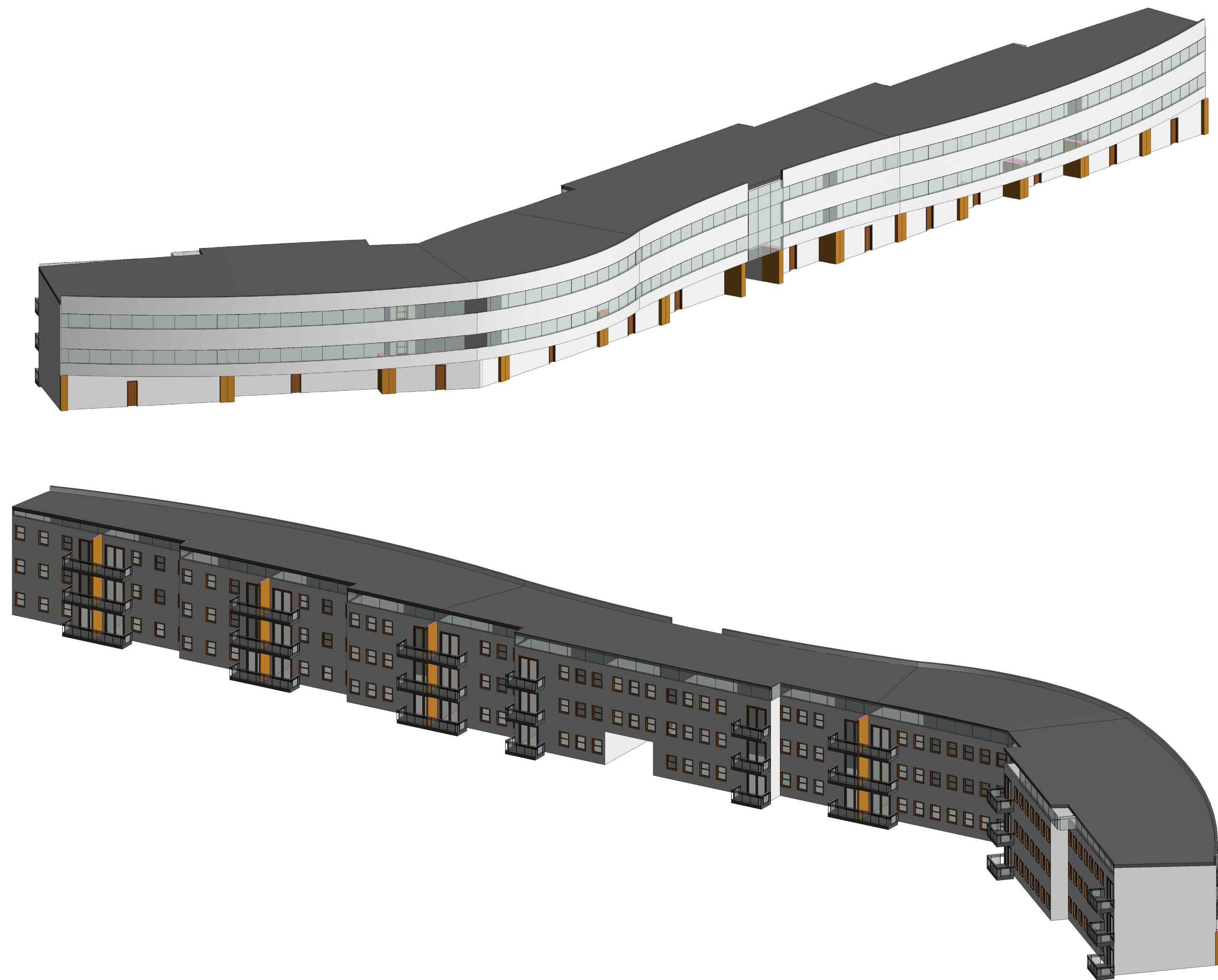
ONE BEDROOM UNIT

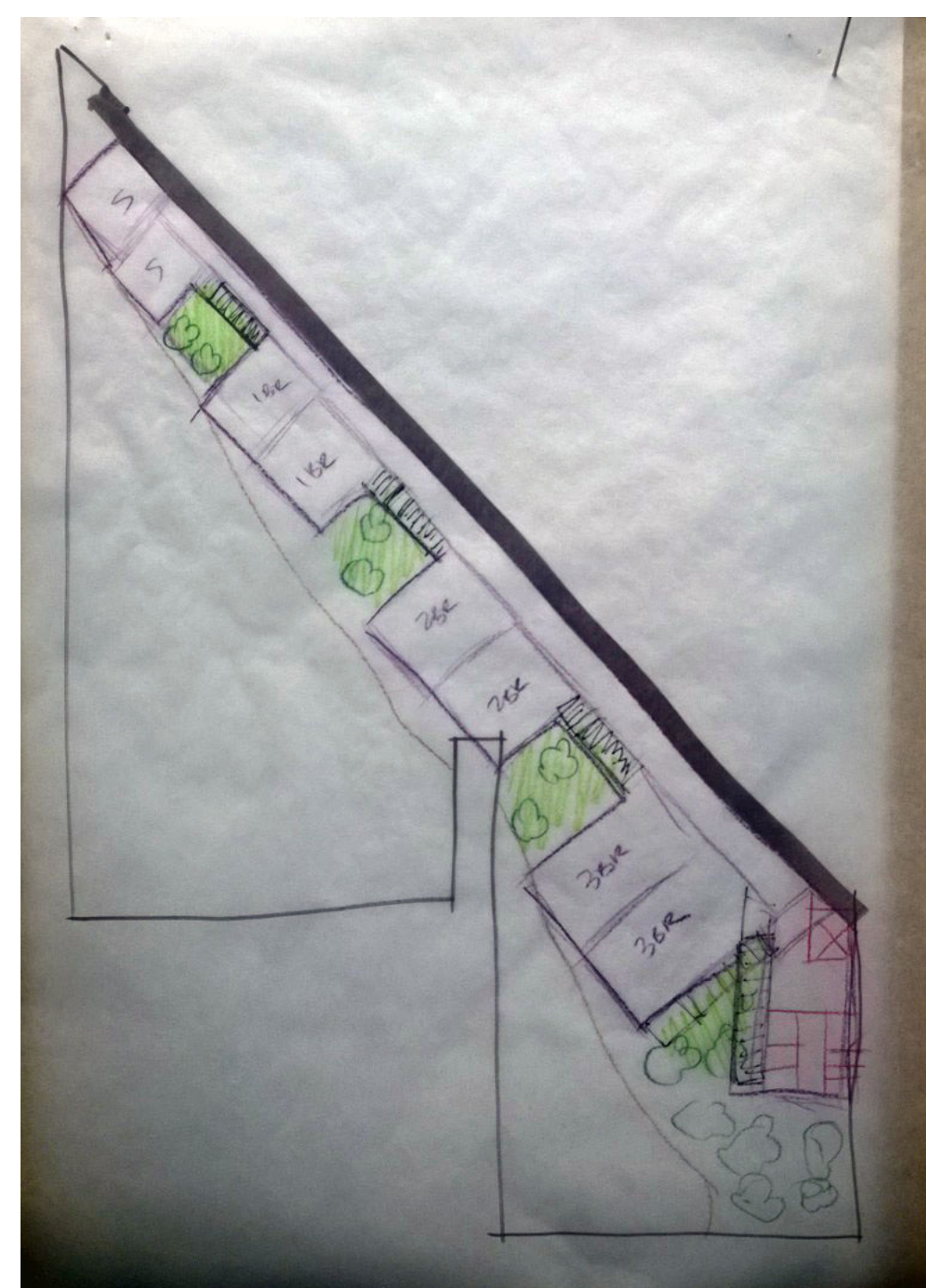
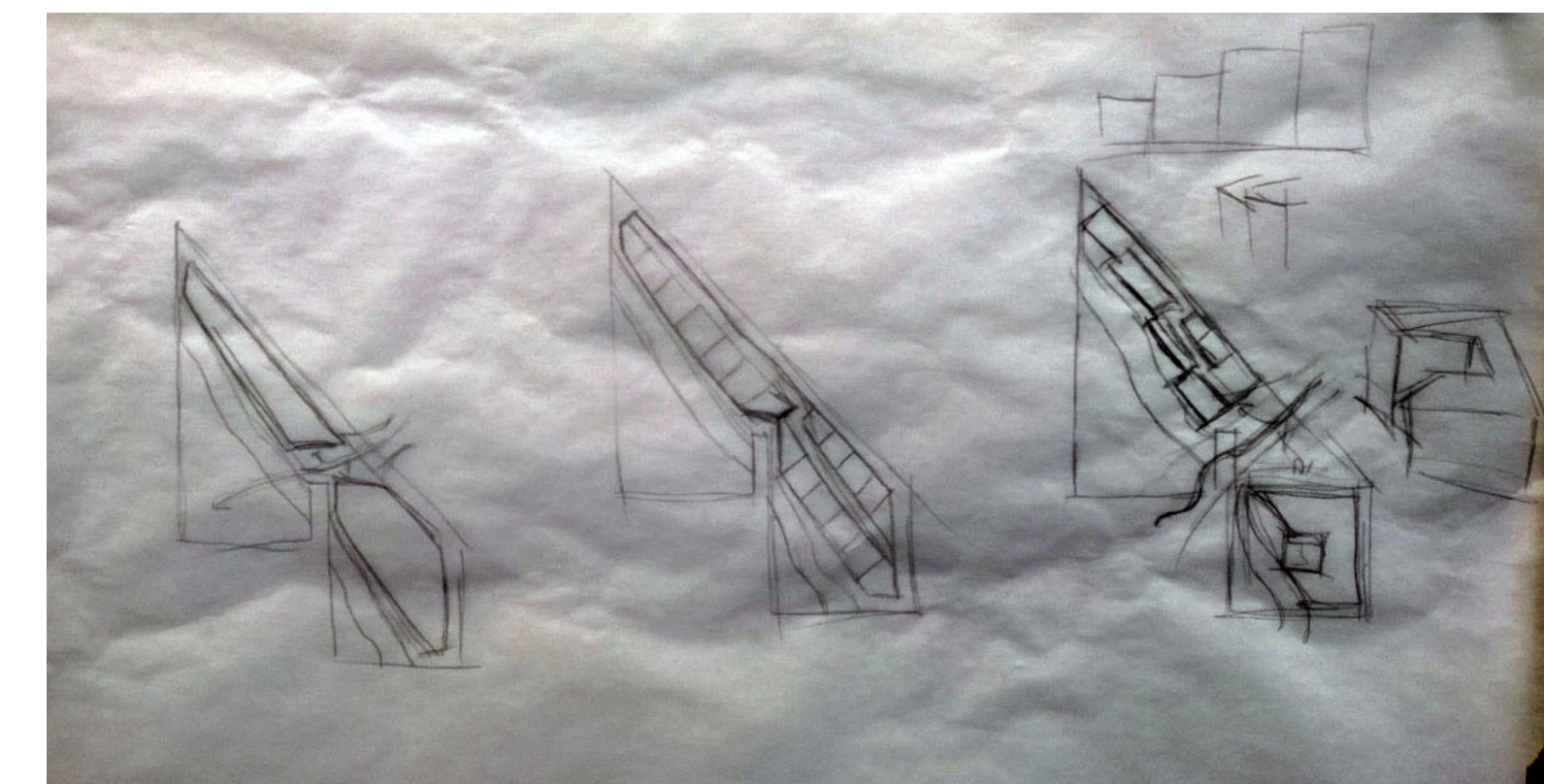
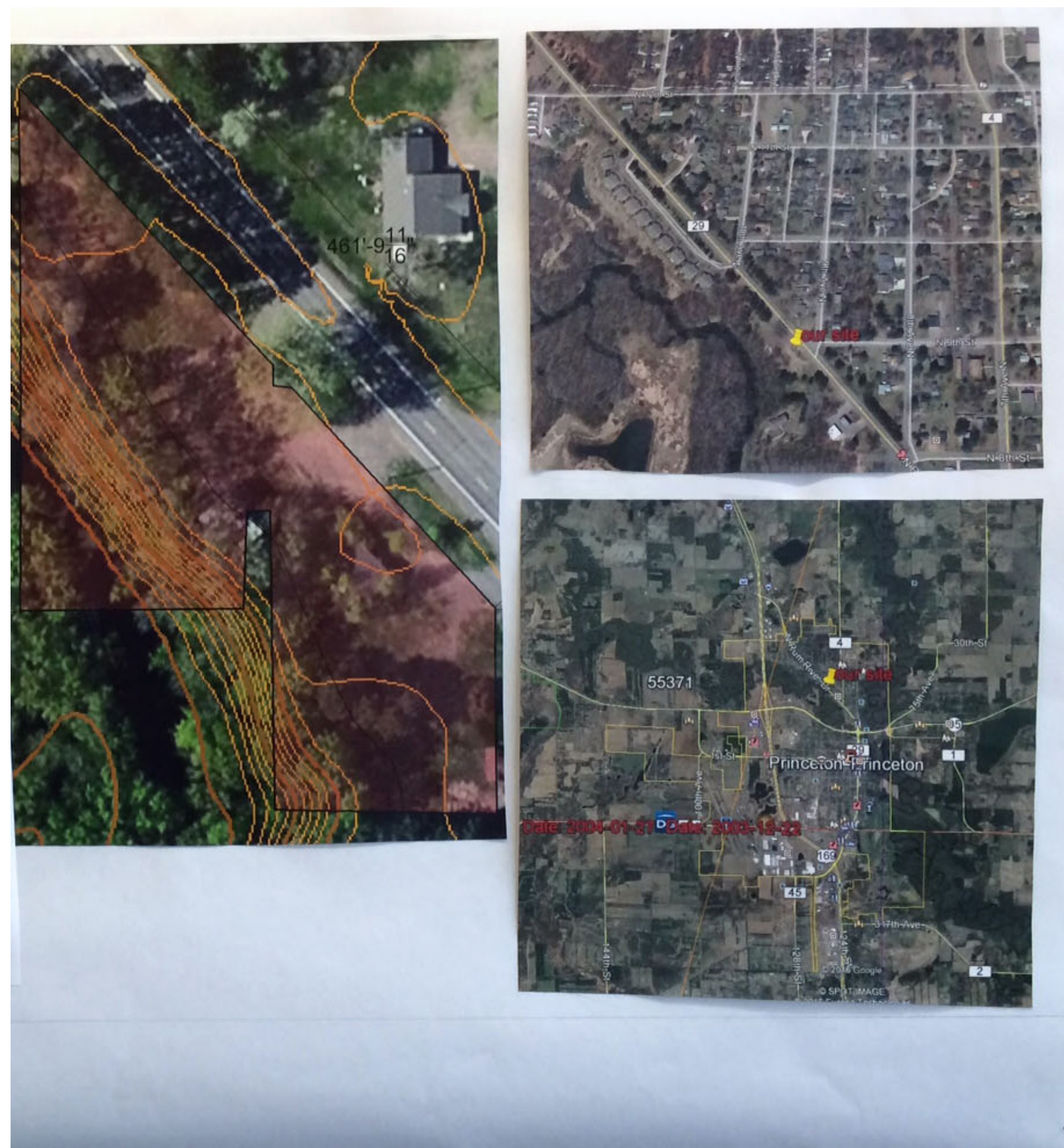
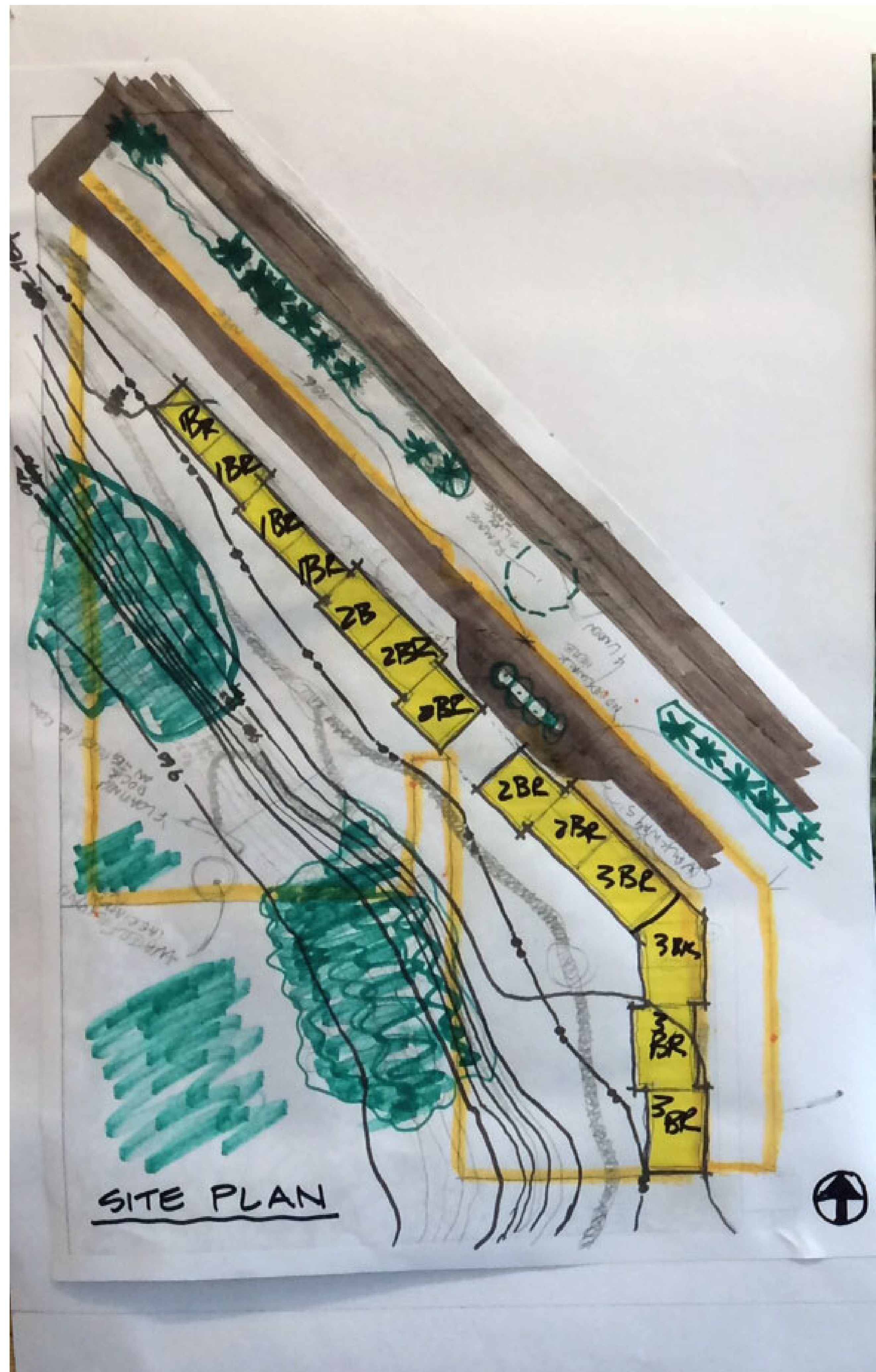


TWO BEDROOM UNIT



THREE BEDROOM UNIT





AIA MINNESOTA - 2016 SEARCH FOR SHELTER DESIGN CHARRETTE
 SCOTIA HOLMGREN, BRIAN WEINHOLD, THERESA BIXLER, HOLLY BURLEY, LIZ KUTSCHKE