

CLARIFYING CARE AND CULTIVATING COMMUNITY

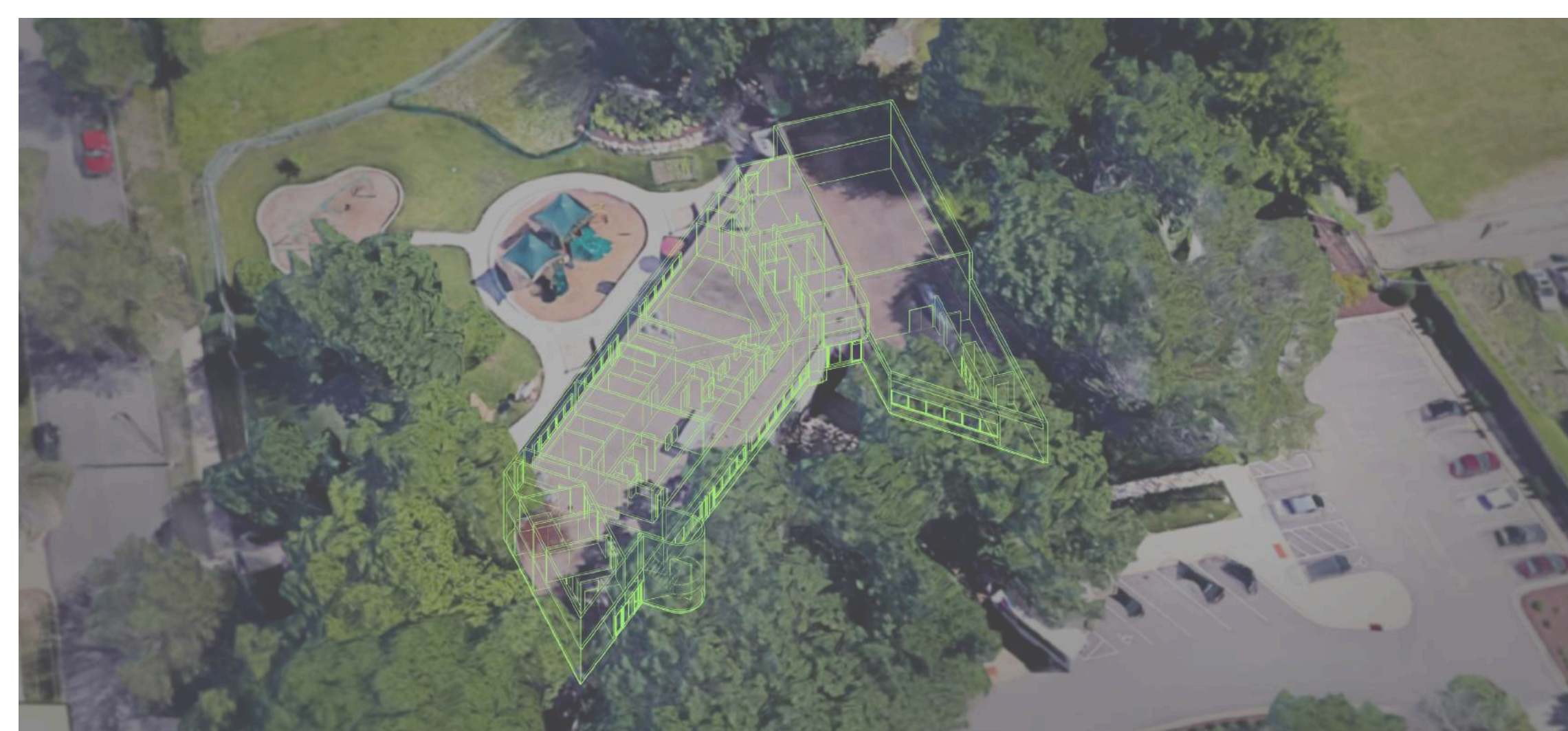
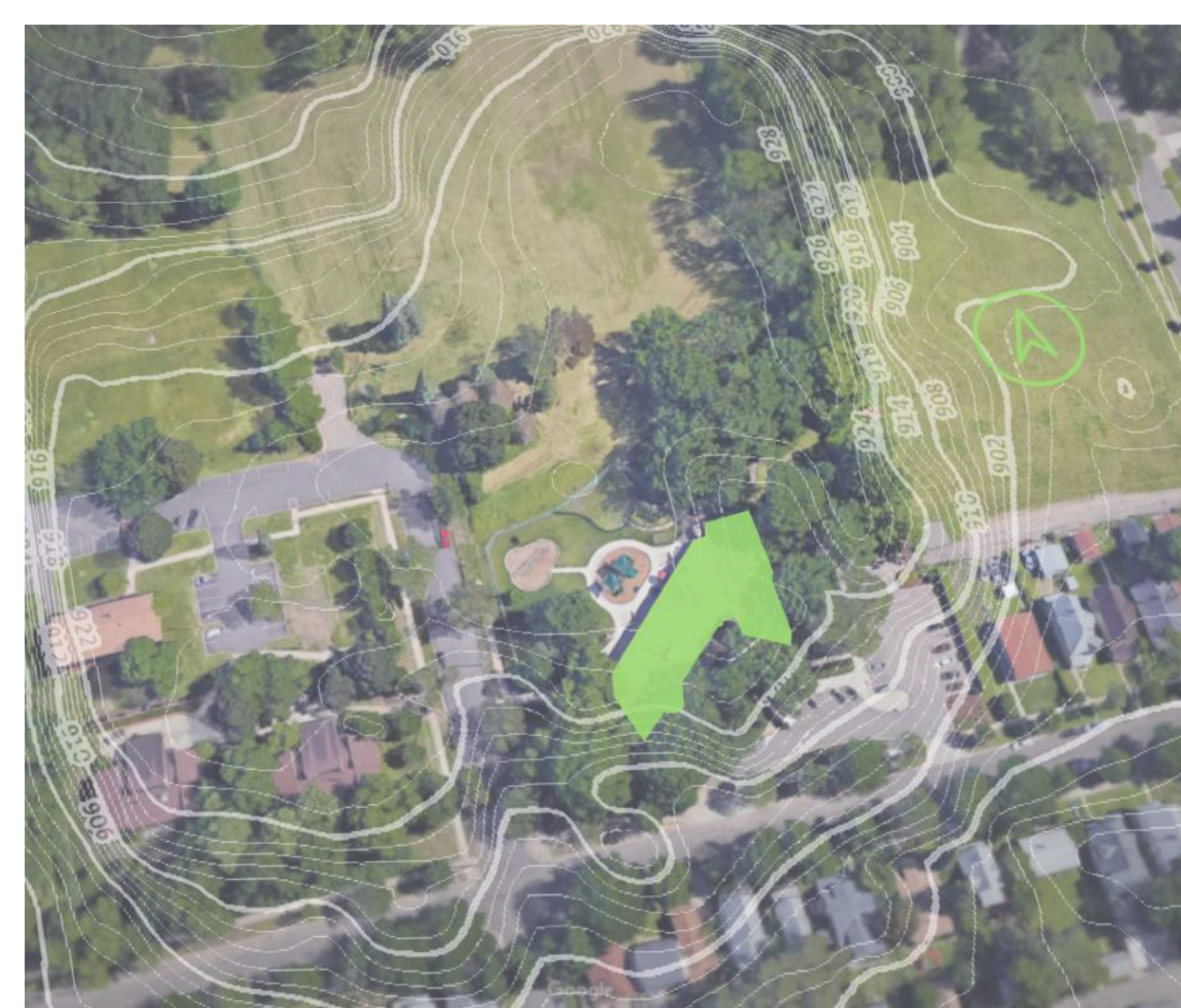
The Amherst Wilder Foundation is a nonprofit community organization that helps children, families and older adults in the greater Saint Paul and East Metro area through direct service programs, research, leadership development and community building.

The Wilder Child Development Center exists as an arm of the foundation that specializes in the care of children 16 months to 5 years, including the development of best practices for parents. On touring their facility, just south of an urban community farm in Frogtown, we were struck by the sheer scope of the responsibilities they take on daily. They feed the students breakfast and dinner, they brush the students' teeth. They provide clothing when students arrive underprepared. They do a load of laundry every day. They not only concern themselves with food allergens, but cater to family requests like organic milk or no apple juice.

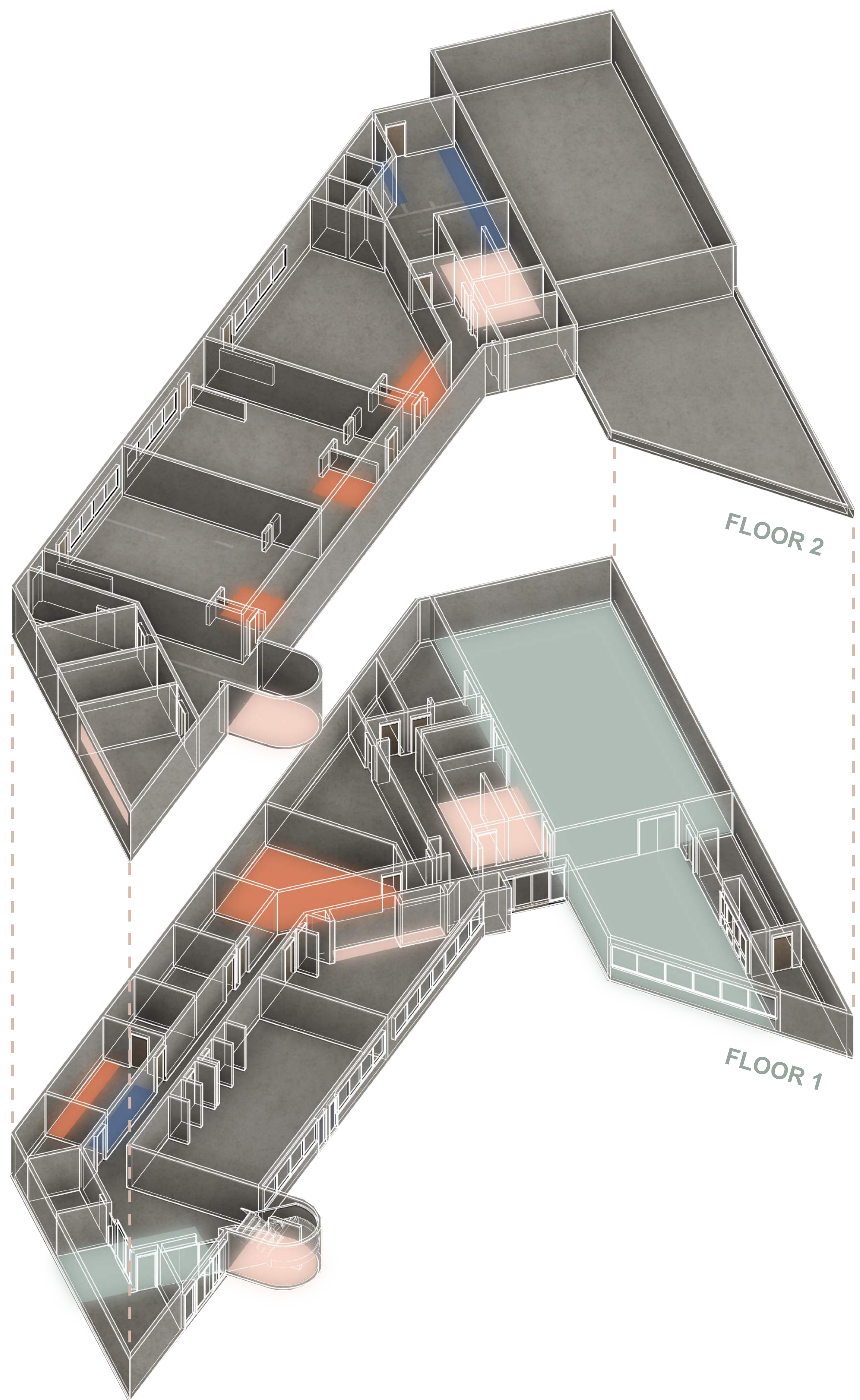
A student teacher ratio between 6:1 and 8:1 works well for them and there is always a waitlist for enrollment.

Like every (every) institution of childhood education, the Center struggles with storage, organization, and culling. With schools, lack of consistent funding can lead to a feast or famine mentality, which leads to the collection of STUFF. Additionally, time pressures on the teachers leads to less time to organize and cull. The Center is generally doing very well, and we saw excellent examples of curation, particularly from the 5 yr olds' classroom where every surface seemed to be used to its greatest advantage. In other locations we saw opportunities for clarification, simplification, and further legibility of spaces and their use.

We put together a quick specification of smaller interventions as a sourcebook, and attempted to order them starting with the most achievable. For now we'll review a few of the larger interventions we are recommending for the building.



AREAS OF INTEREST



COMMUNITY

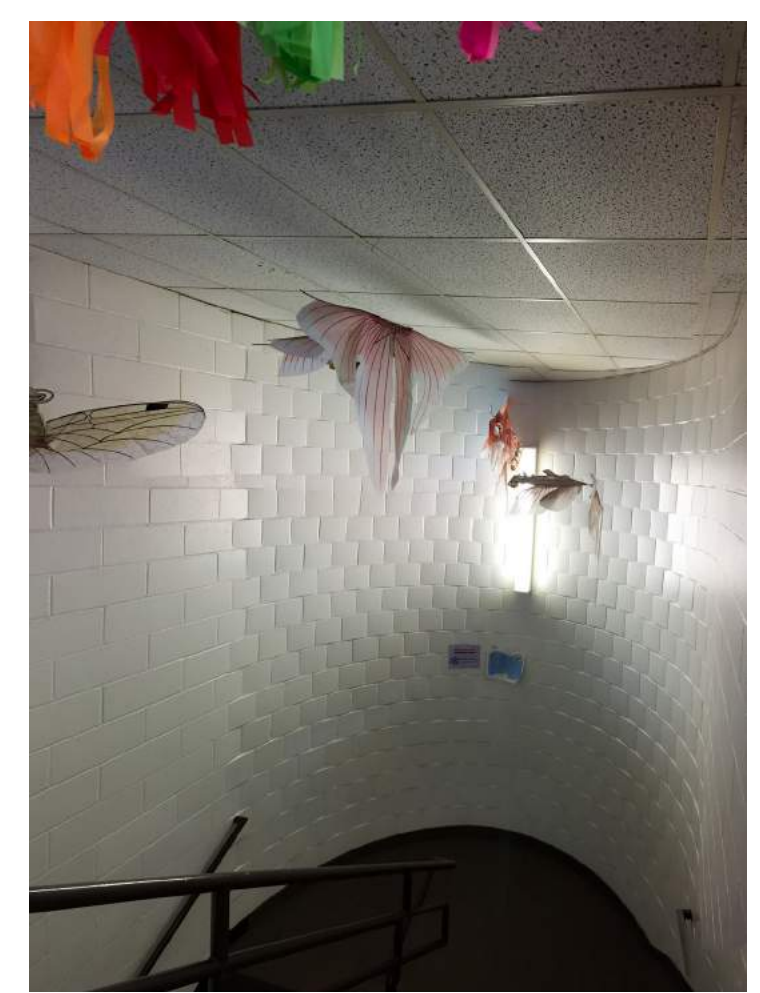


DINING - add banquette for rentable events / adults

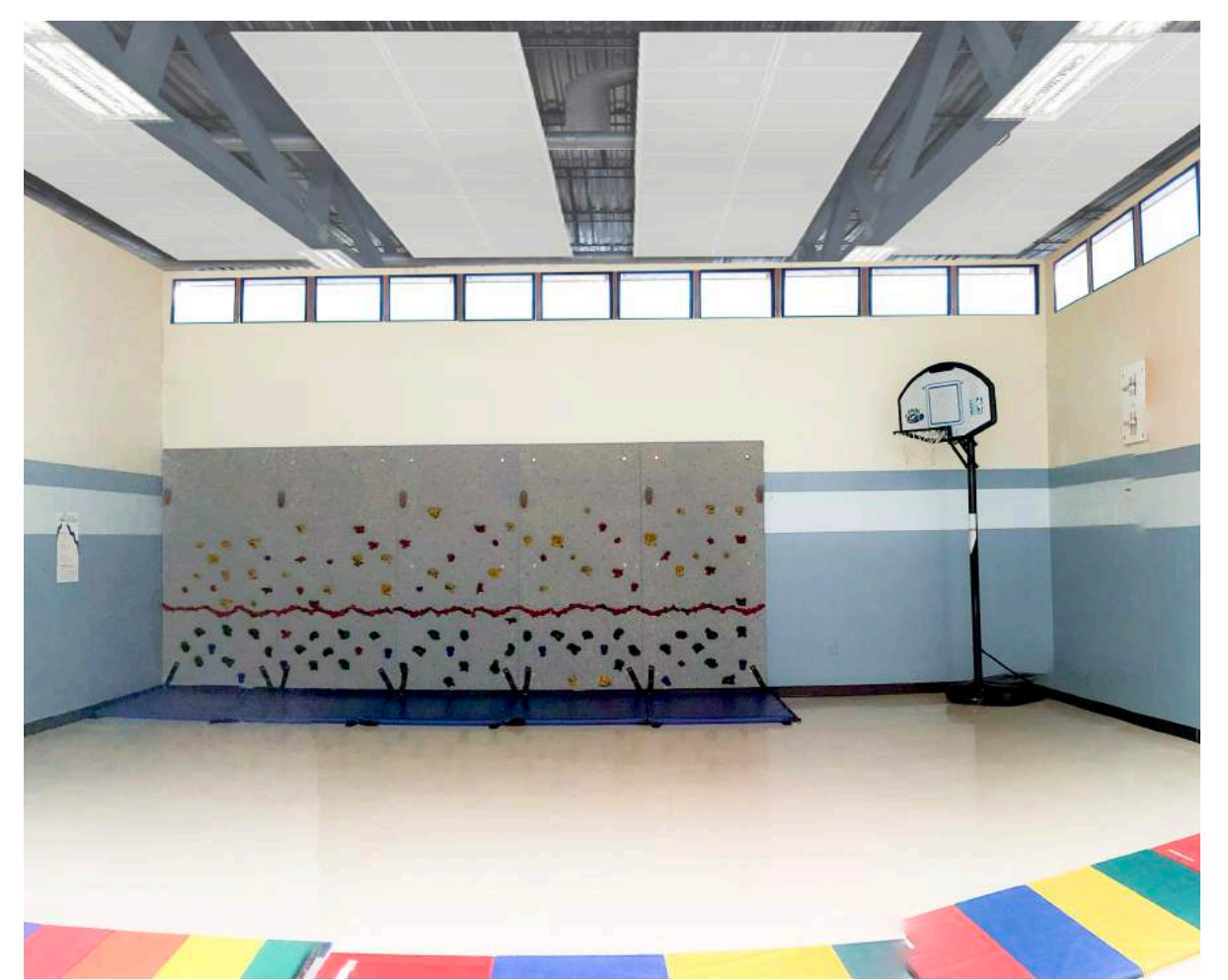
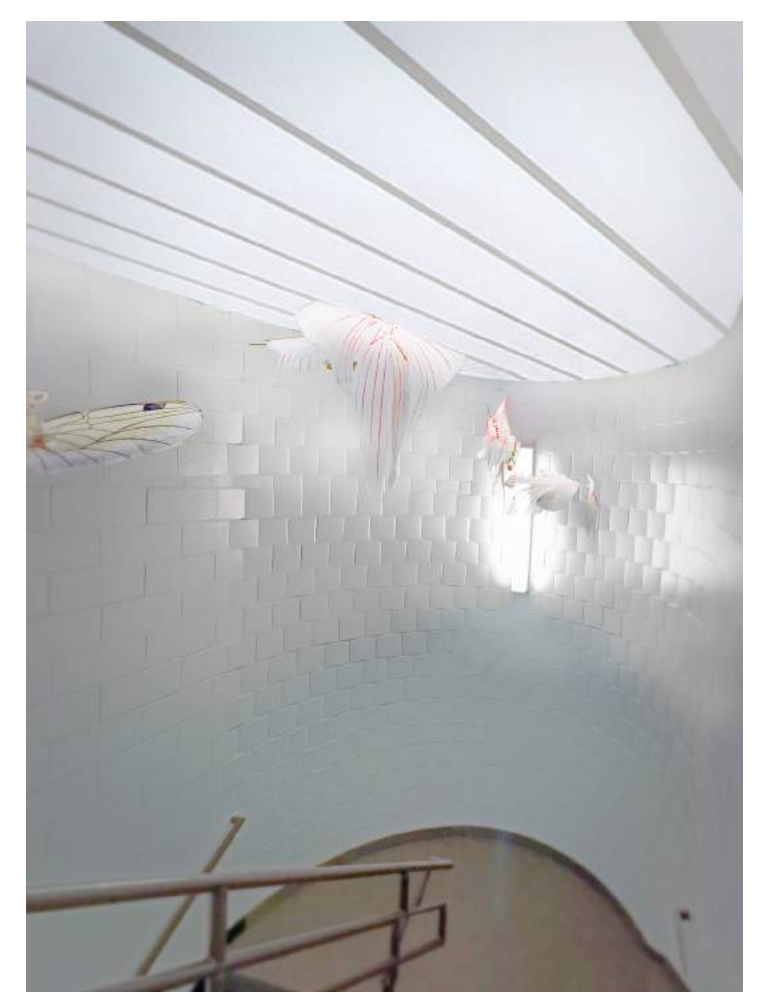


GYMNASIUM - express verticality / destinations

DAYLIGHT



STAIRCASE - add skylight

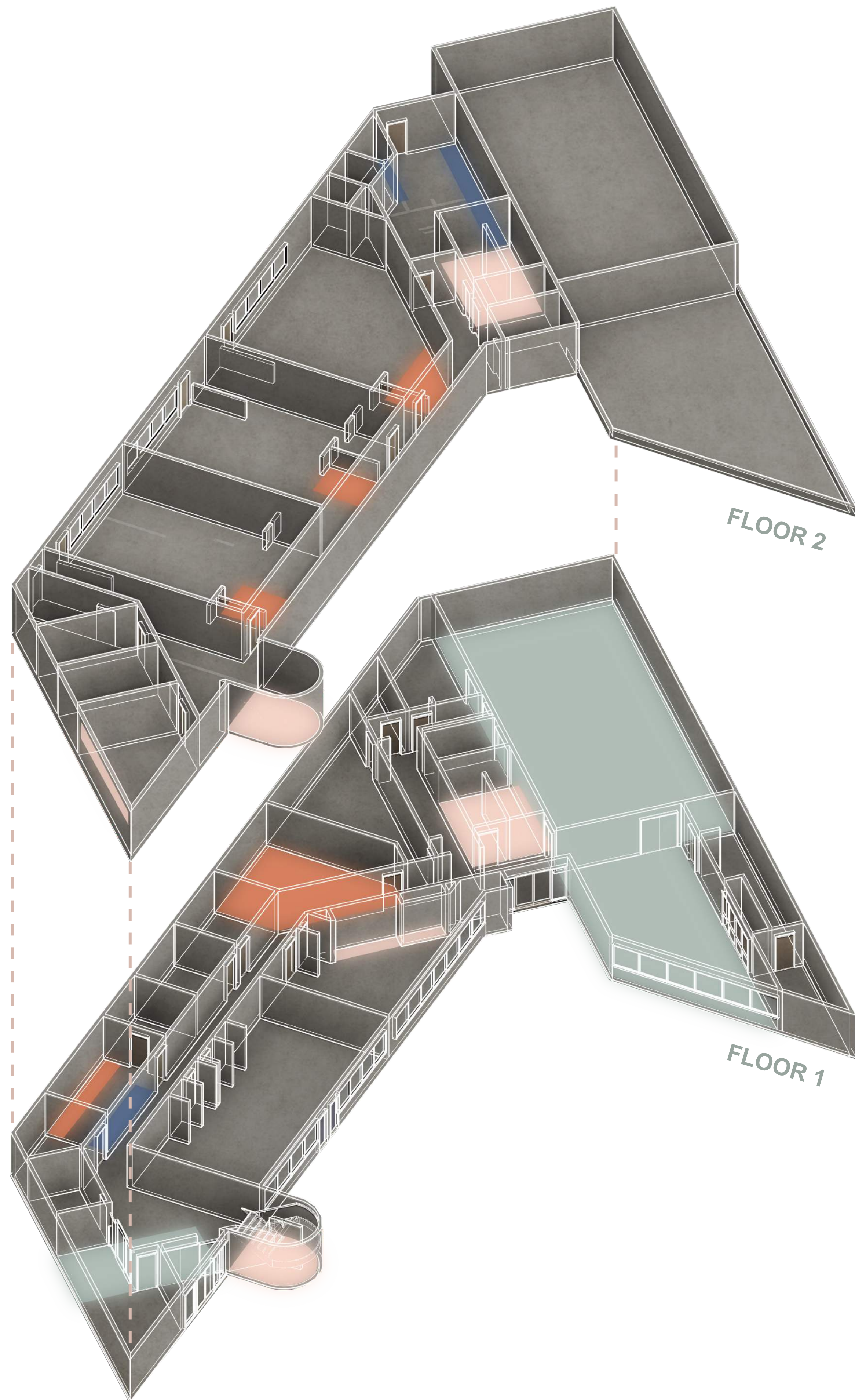


GYMNASIUM - clarestory windows



CLASS / CONF. - reflect mirrors

AREAS OF INTEREST



COMFORT

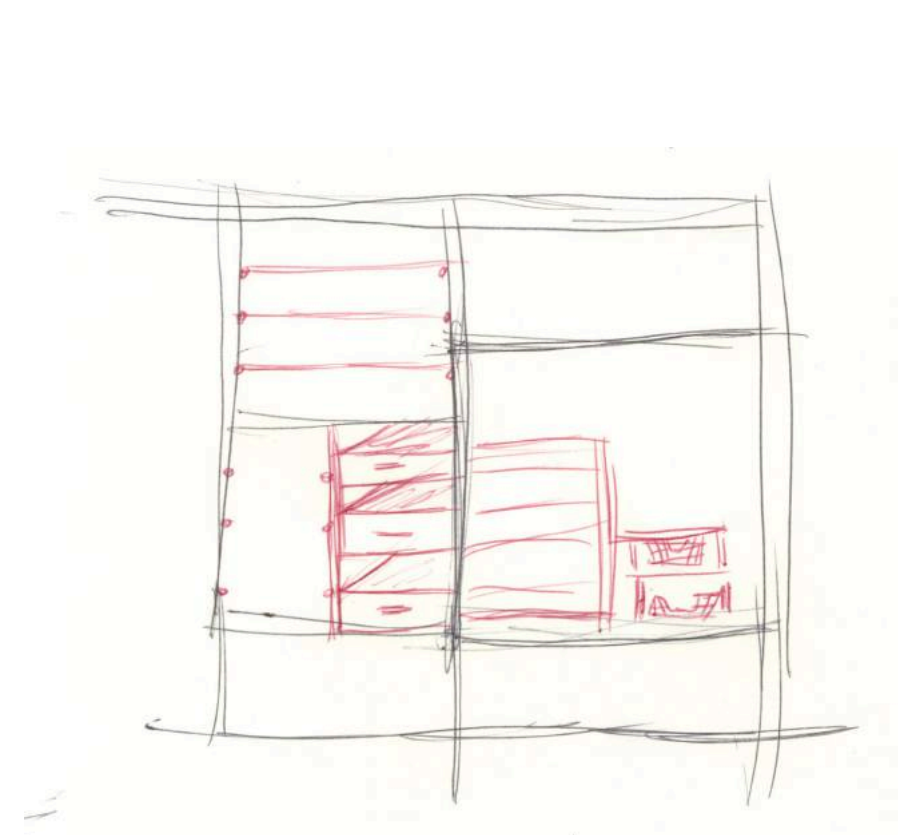


ENTRY - combine waiting spaces, add graphics, cohesive destination



STAFF BREAKROOM - combine waiting spaces, add graphics, cohesive destination

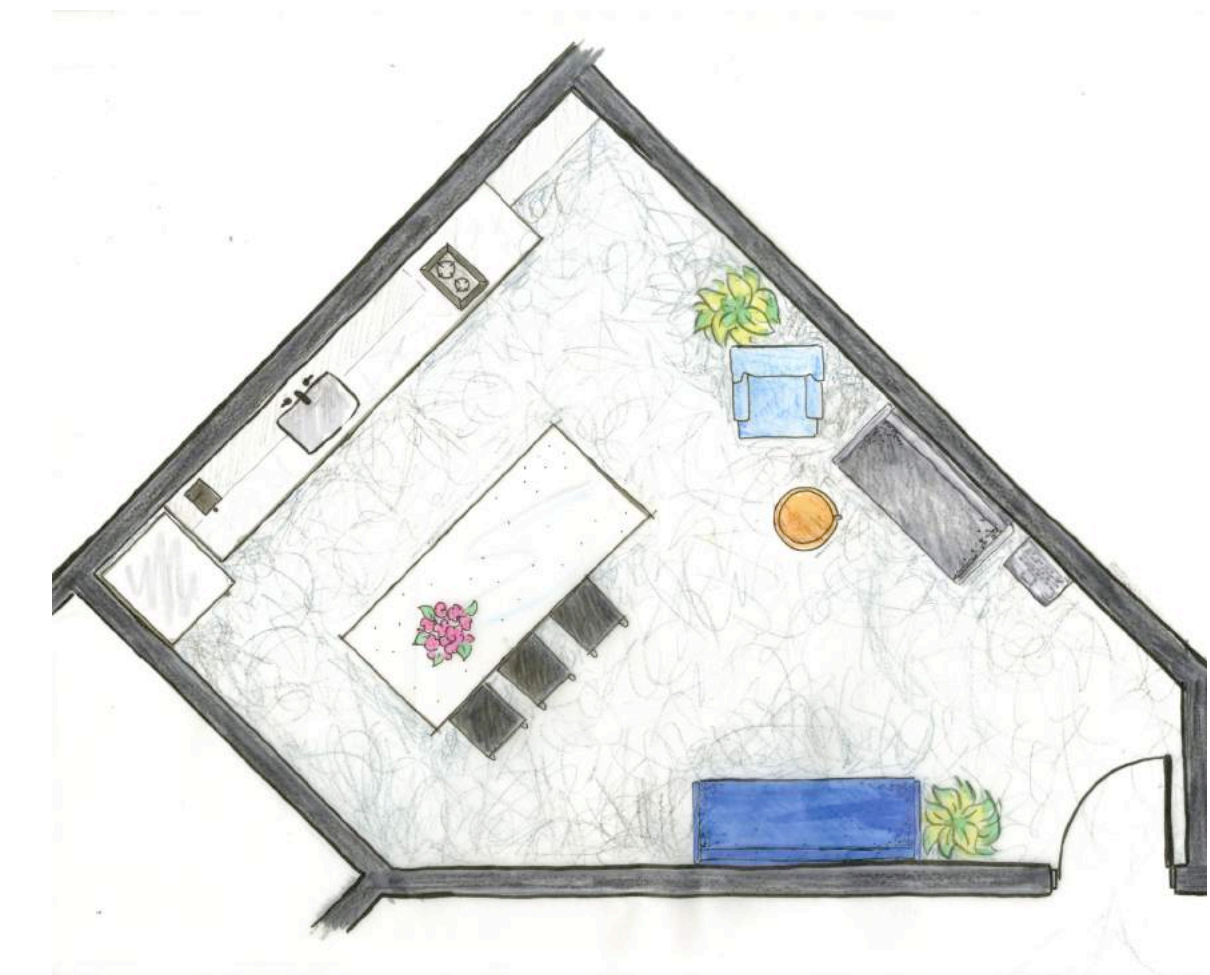
STORAGE



STORAGE - multiuse (shelves, cubbies, drawers)



CURRICULUM ROOM - 2 zones, closed cupboards for reducing visual clutter, adding light shelf



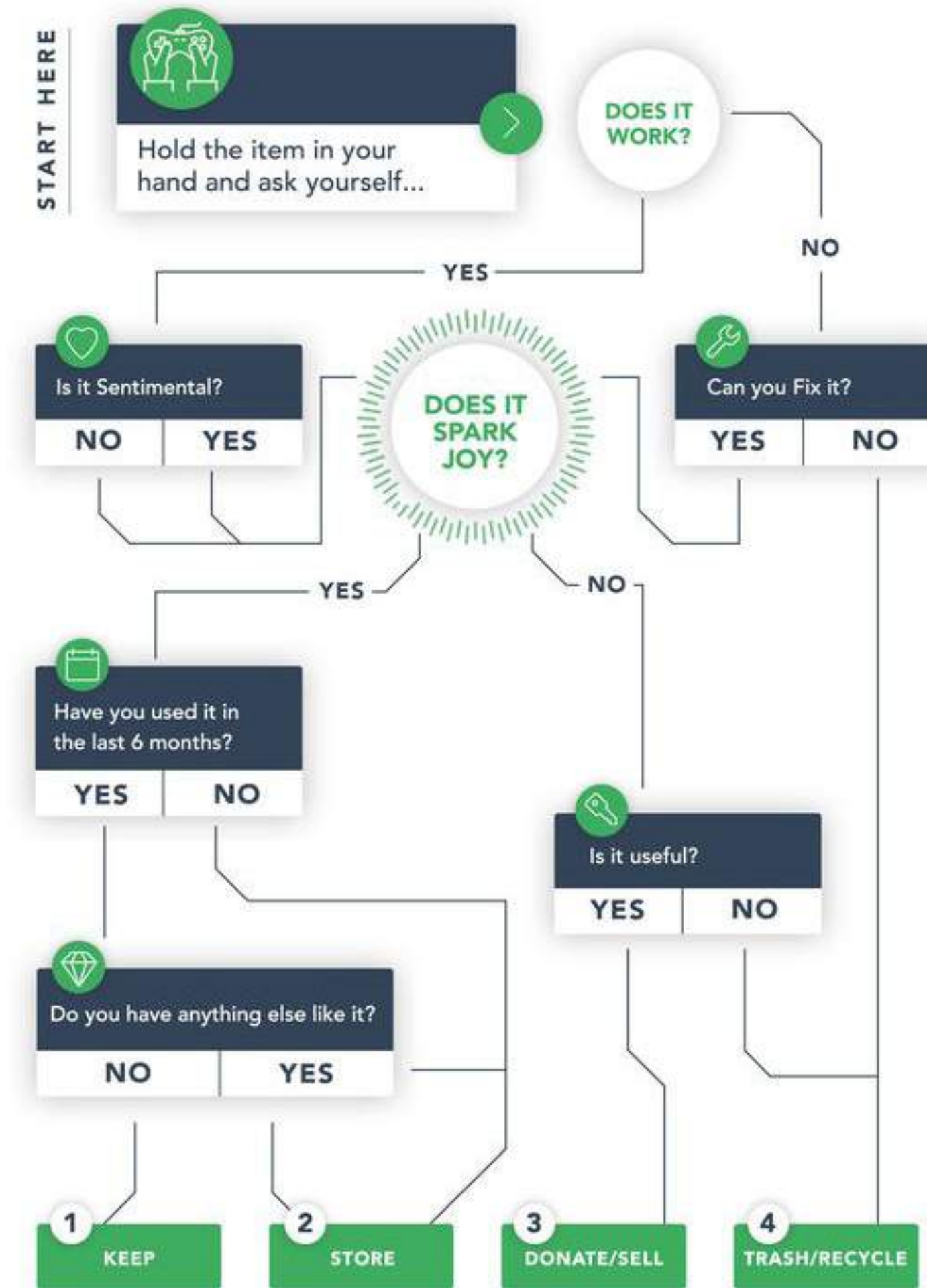
BREAKROOM - multi-use storage and seating space - integrate trash, microwave, etc.

STRATEGIES & SOLUTIONS

SECRET GARDEN



ART OF CLEANING UP



1 Keep

Go through the flowchart one more time to make sure you get the same result. If it still passes the "keep" test, make sure you give it a home in your home à la Marie Kondo.

2 Store

If it's good enough to keep, but doesn't quite belong in your everyday living space, consider storing the item away safely and easily with a service like MakeSpace that'll pick it up and bring it back for you.

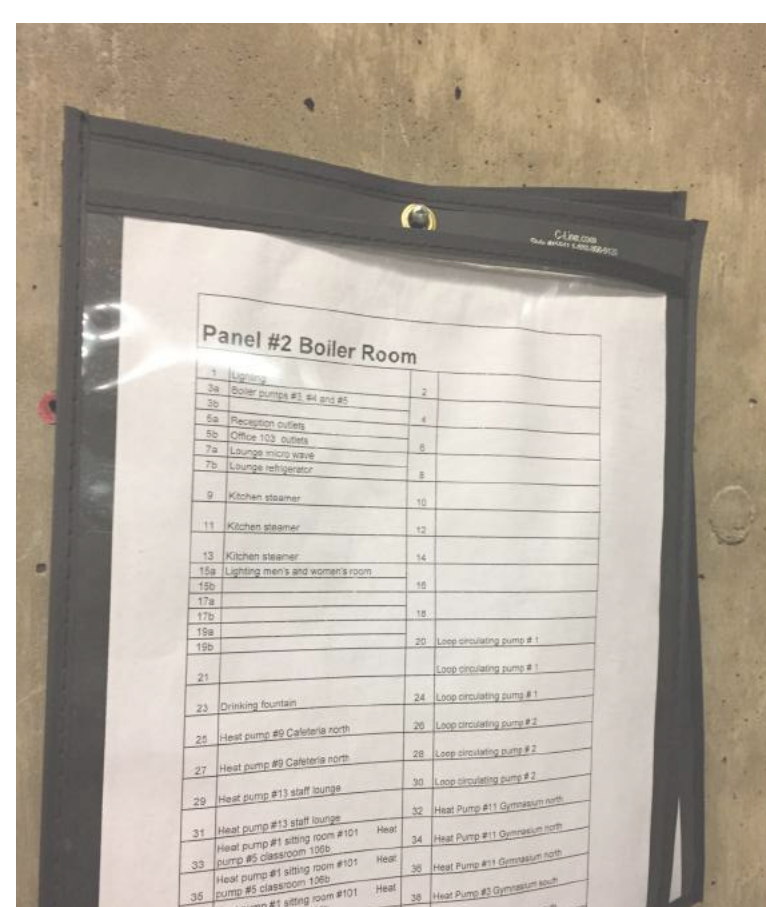
3 Donate / Sell

Worried about your donation or sell pile never finding its way out of your home or apartment? Well, don't. Pick up of your donatable goods is available, and a variety of sites and apps where you can sell your items from home.

4 Trash / Recycle

If the item can't be of use to anyone, make sure you first check to see if it's recyclable or if it requires proper disposal before tossing it in the garbage.

REGULARIZING SIGNAGE



CURIOSITY CABINET



MATERIALITY & SPECIFICATIONS

