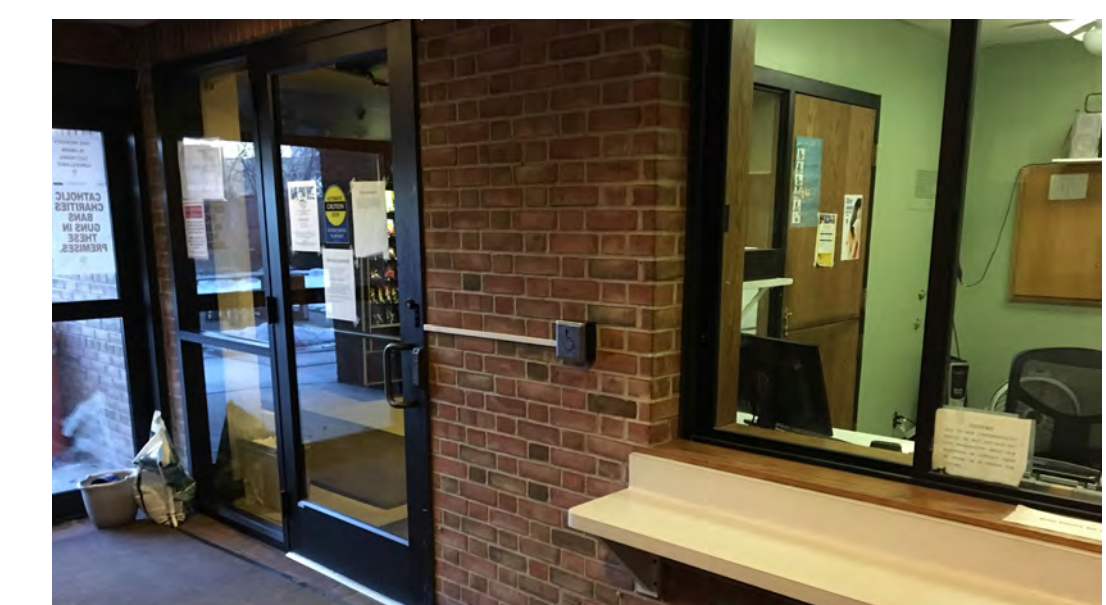
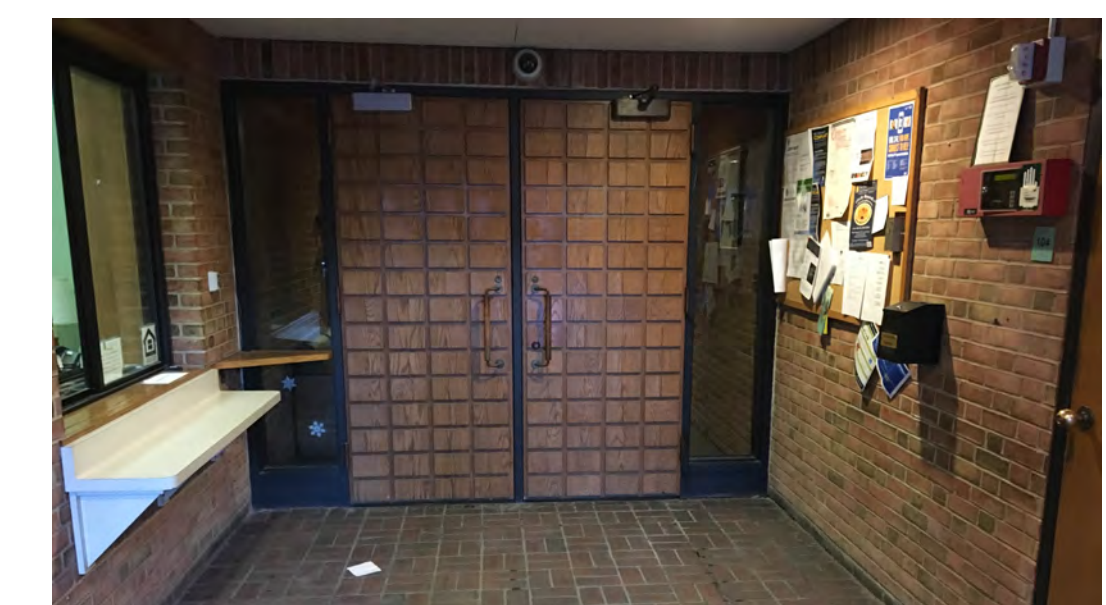


ST CHRISTOPHER PLACE

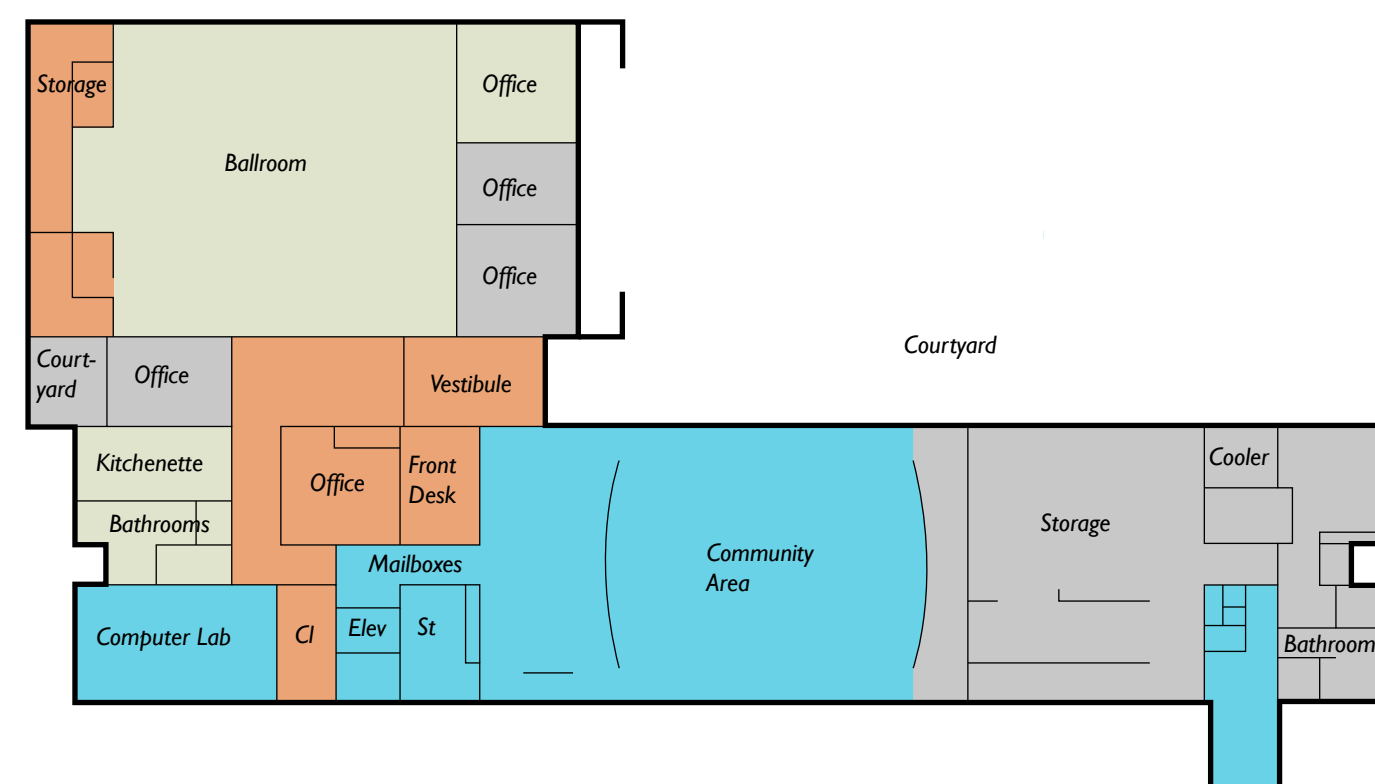
Catholic Charities of St. Paul and Minneapolis serves those in need. We are a leader at solving poverty, creating opportunity, and advocating for justice in the community. Our programs for children, families and adults annually help nearly 30,000 people, regardless of faith, background or circumstance. Our mission is rooted in Christian faith and principles of Catholic School Teaching. These values inspire the work that we do for those most in need. St. Christopher's serves a disadvantaged population, housing 70 residents and providing space for casework services.



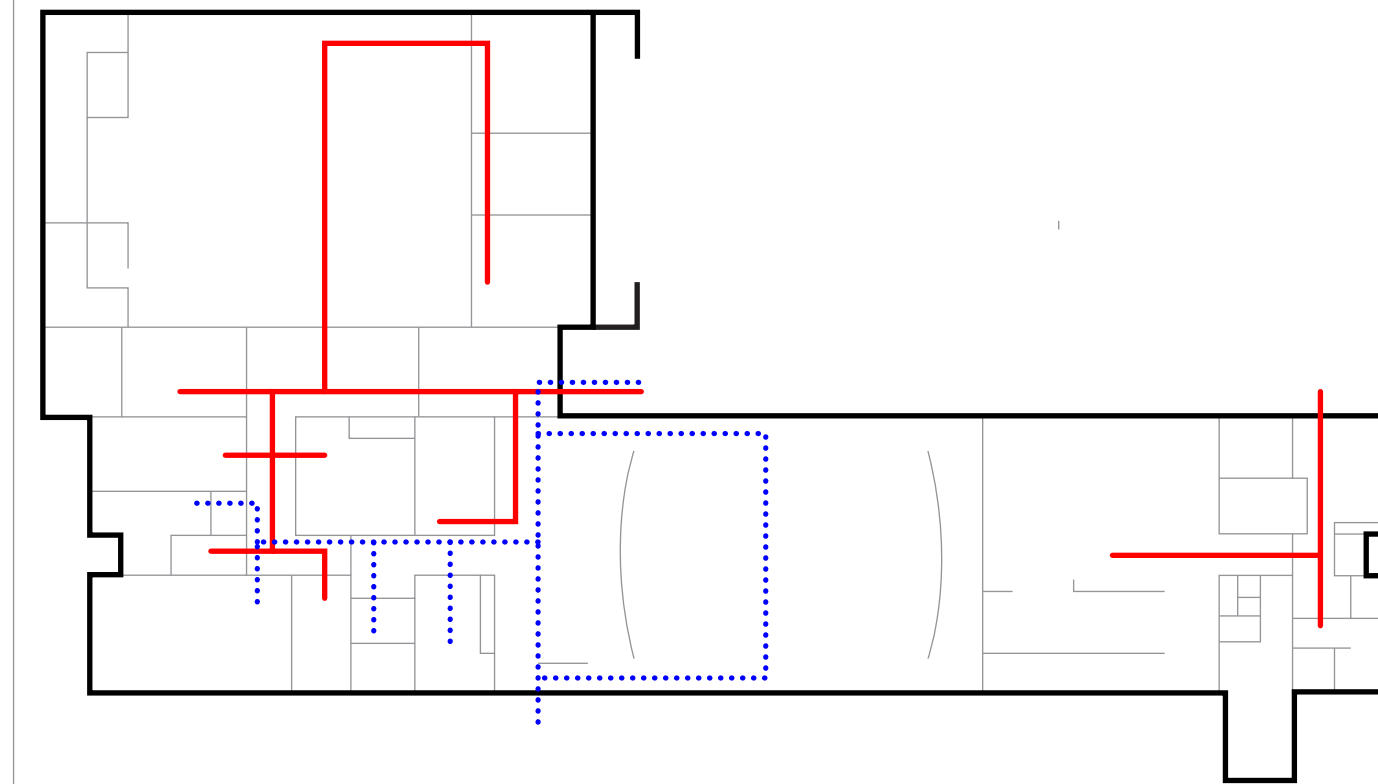
EXISTING CONDITIONS



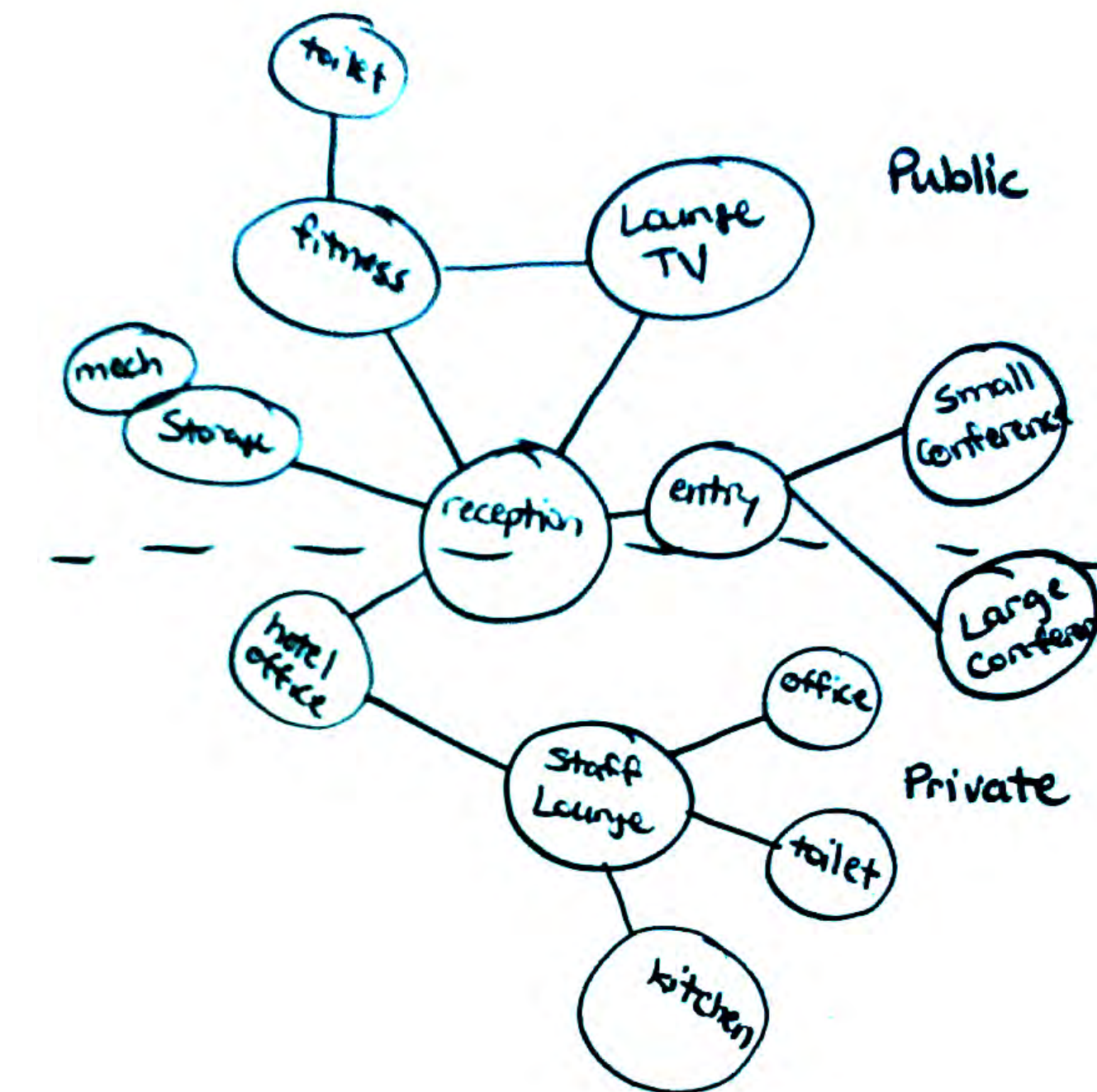
DIAGRAMS



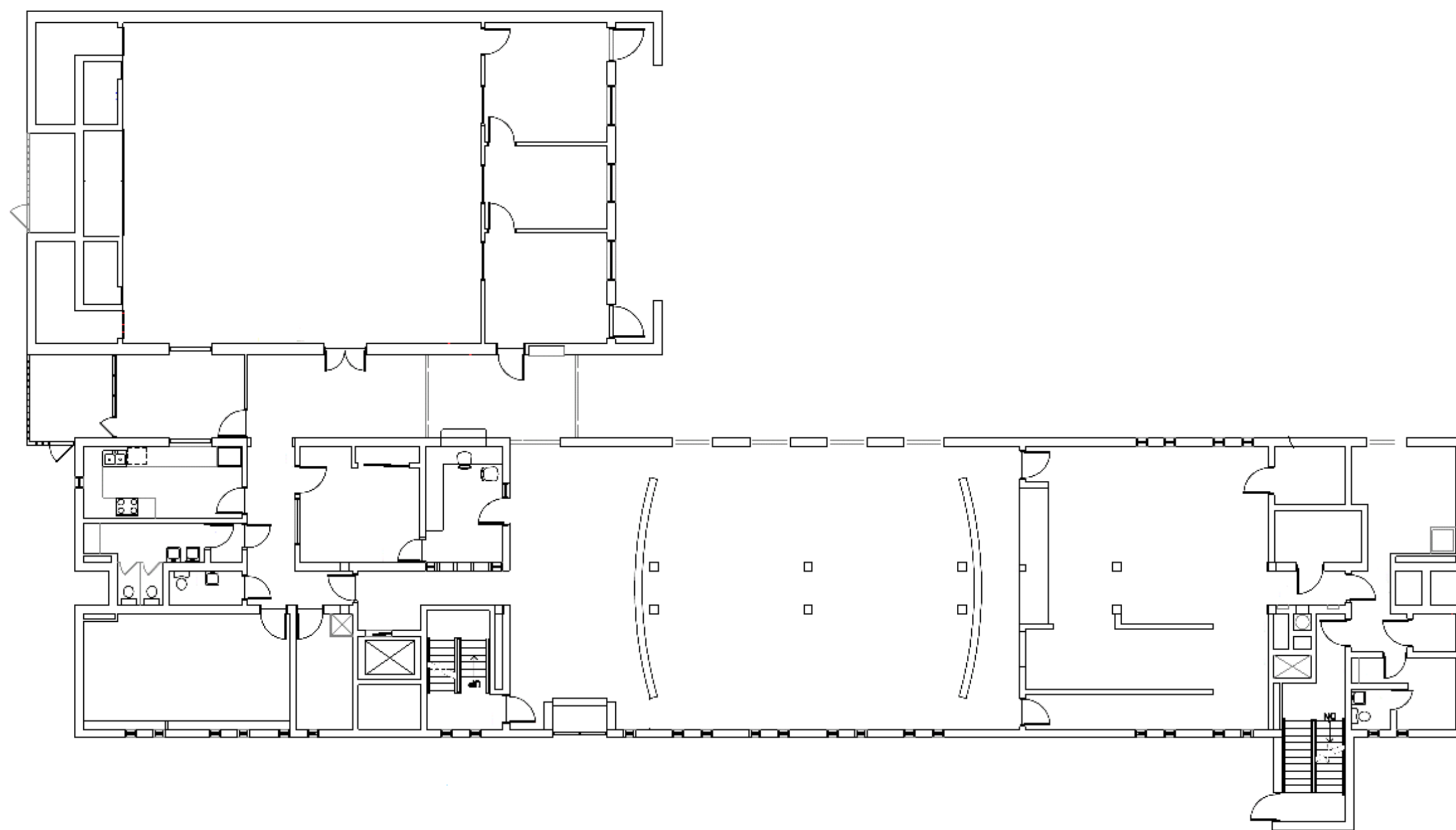
SPACE USE



CIRCULATION



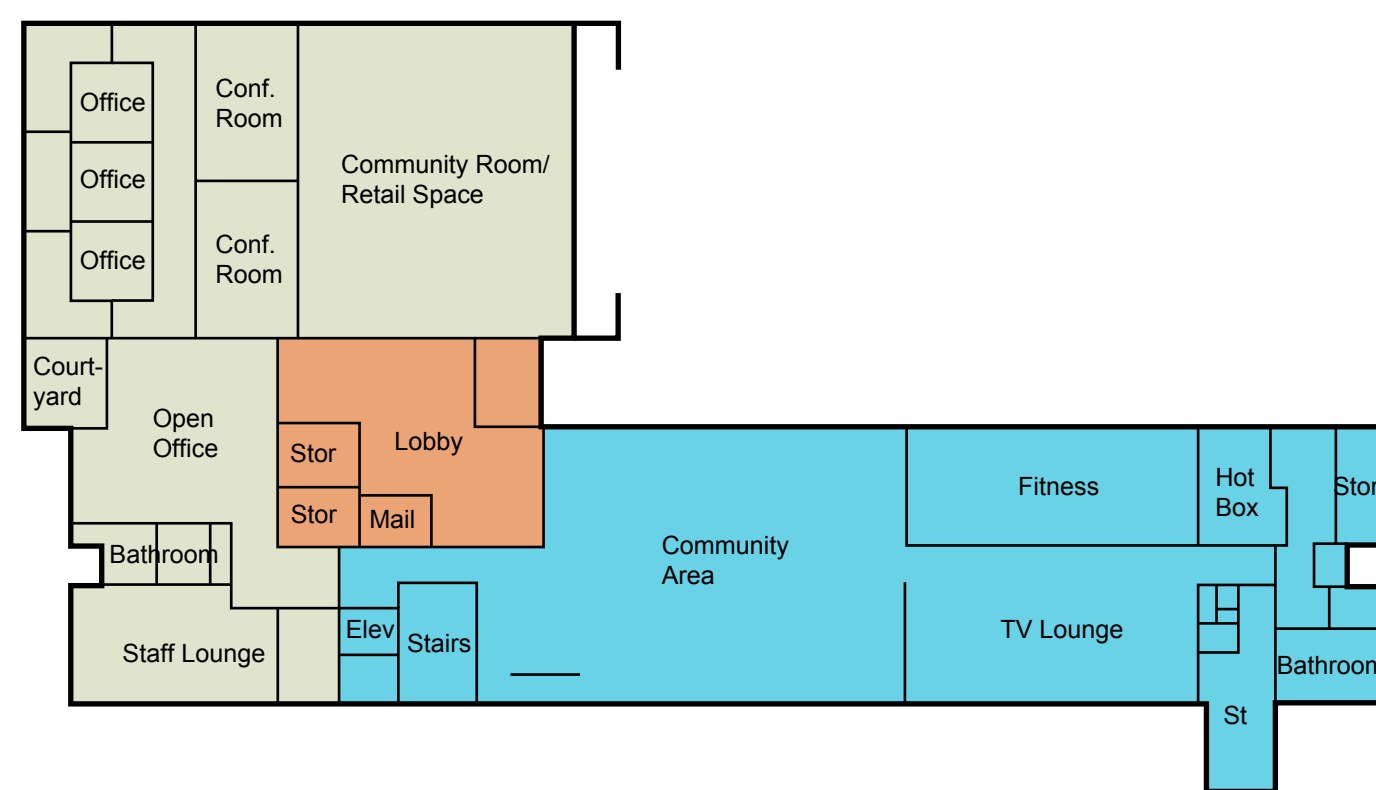
EXISTING PLAN



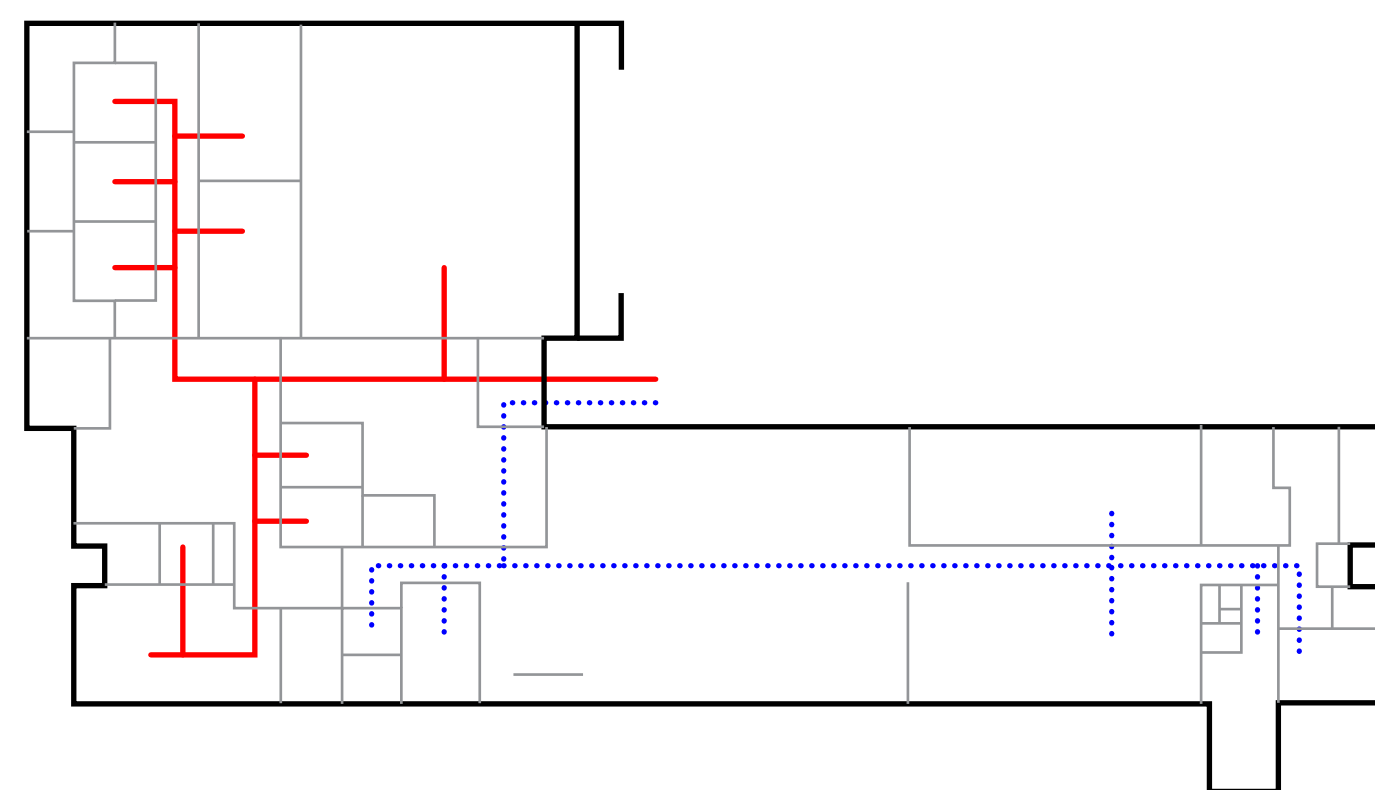
PROJECT GOALS

- St. Christopher's serves a disadvantaged population, housing 70 residents and providing space for casework services.
- Create a clear entrance area that is welcoming
- Connect with the neighborhood
- Maximize existing floor area
- Increase usability of the space
- Create a space for residents, staff, and the public
- Transition areas
- Maximize safety, enhance sightlines of front desk

DIAGRAMS

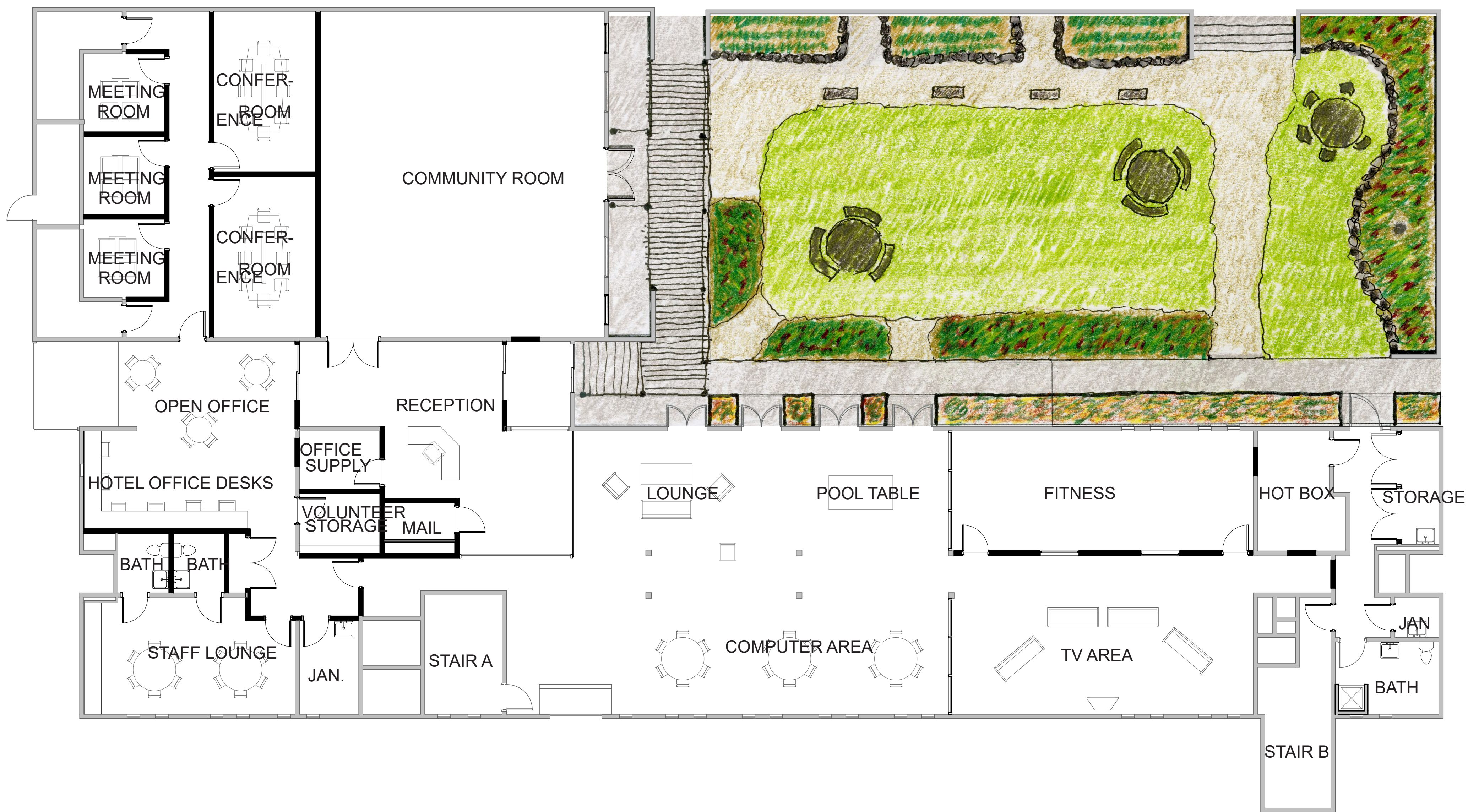


SPACE USE



CIRCULATION

PLAN

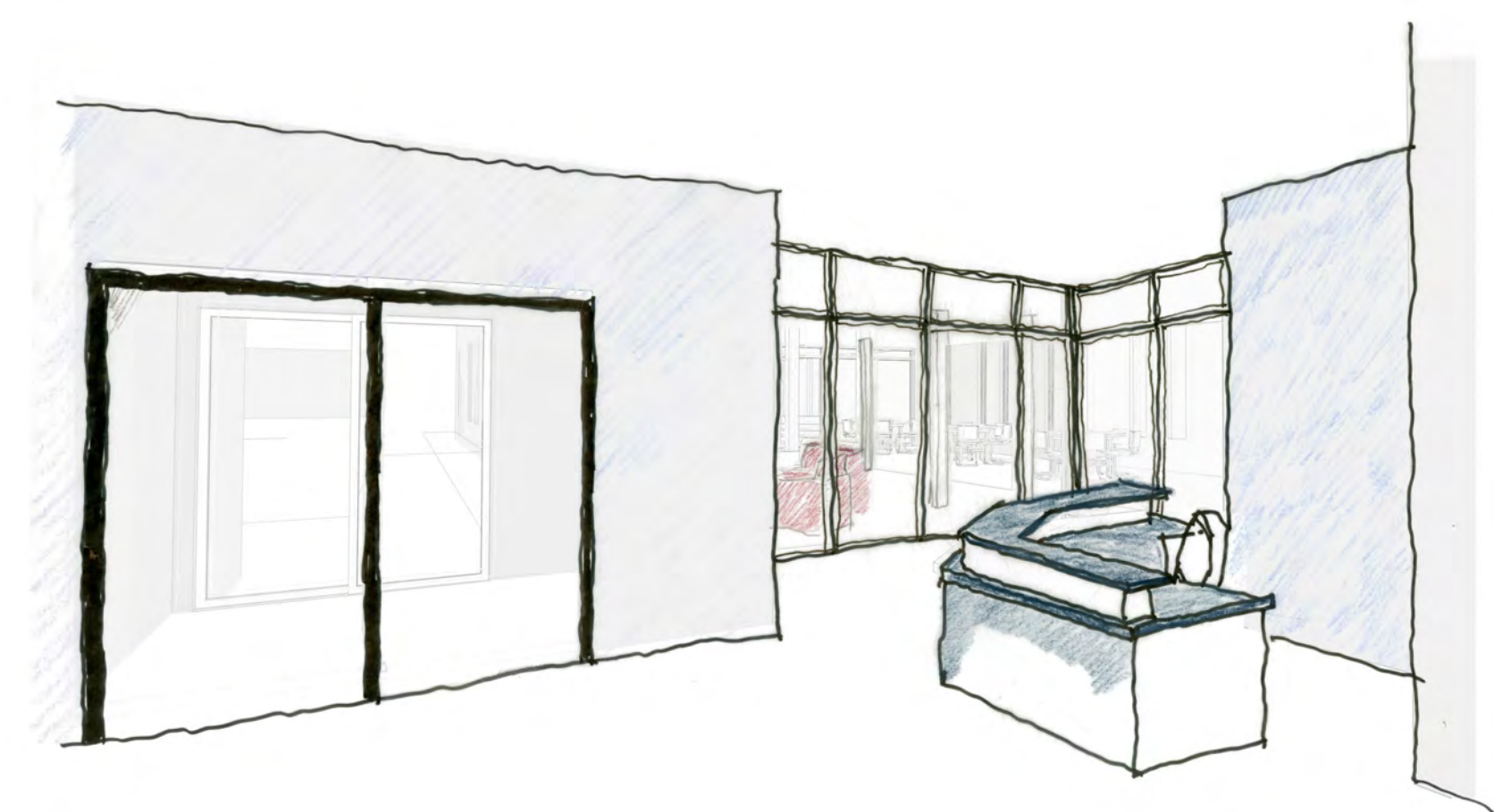


PERSPECTIVES

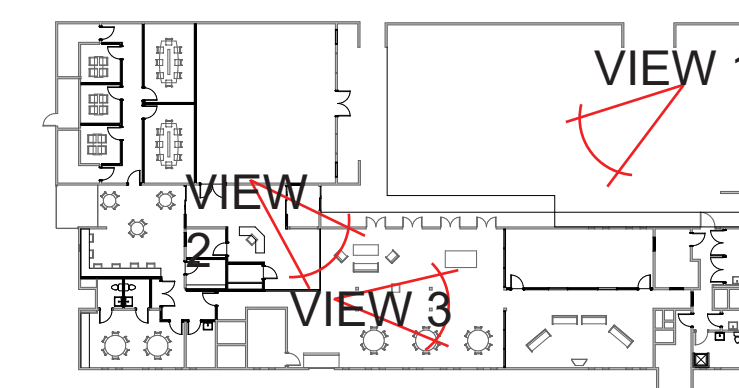
VIEW 1 - EXTERIOR



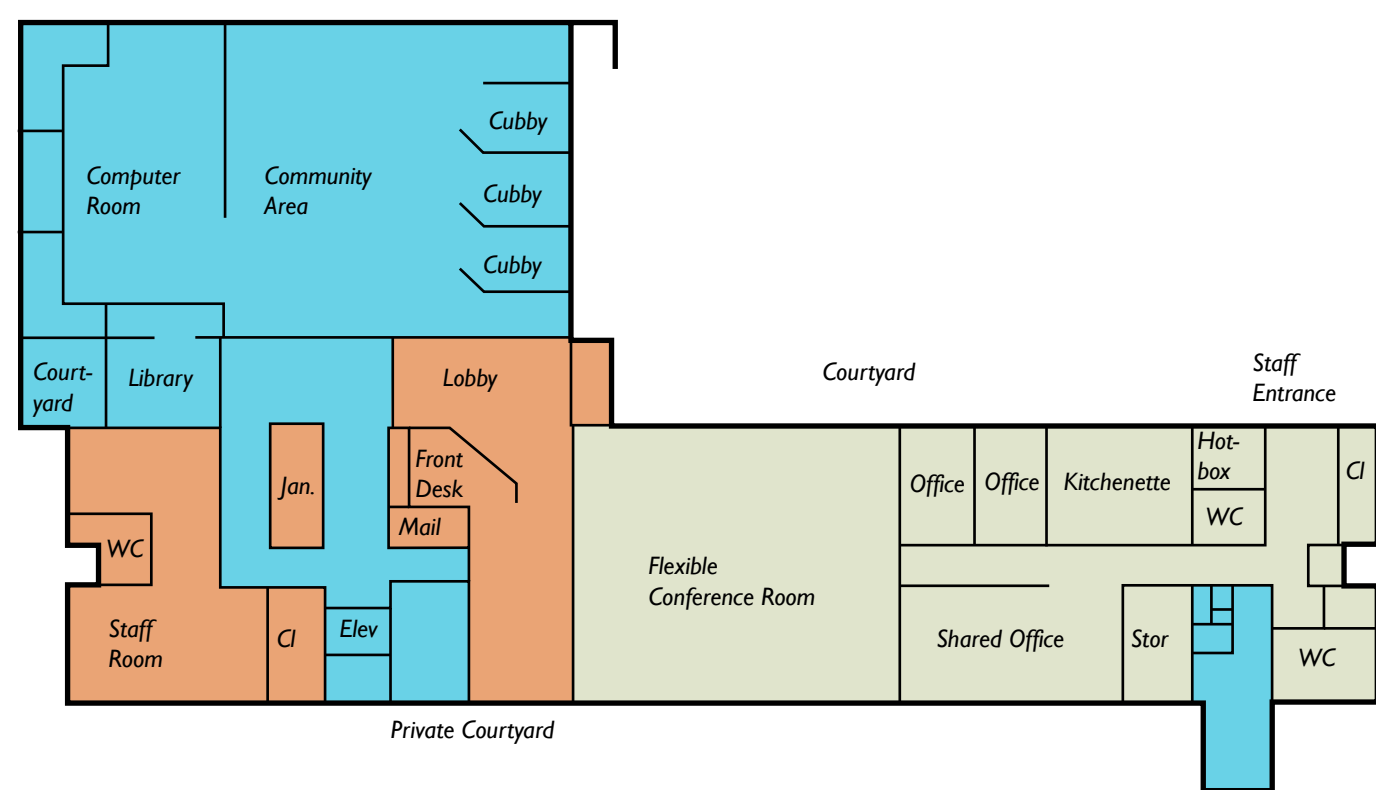
VIEW 2 - ENTRY & VESTIBULE



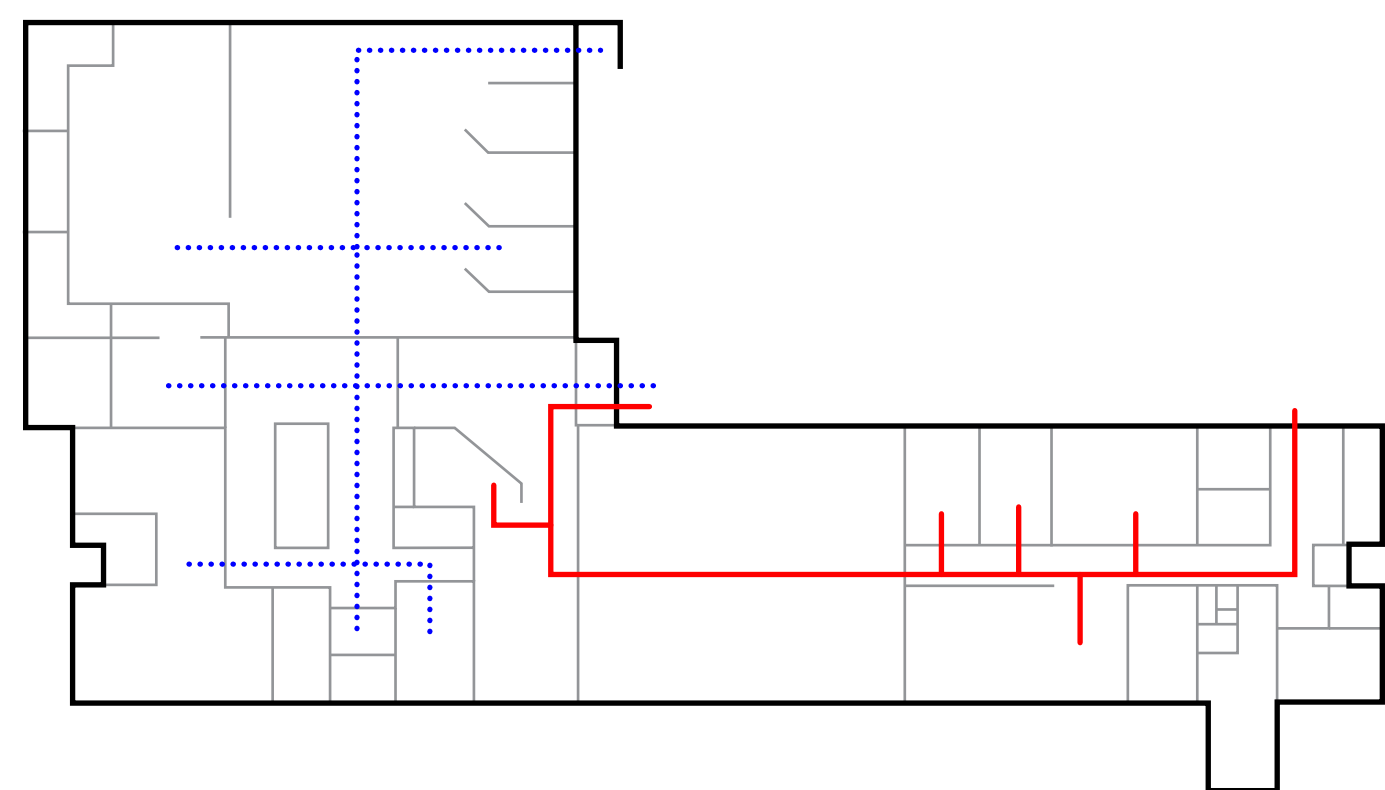
VIEW 3 - OPEN COMMON SPACE



DIAGRAMS

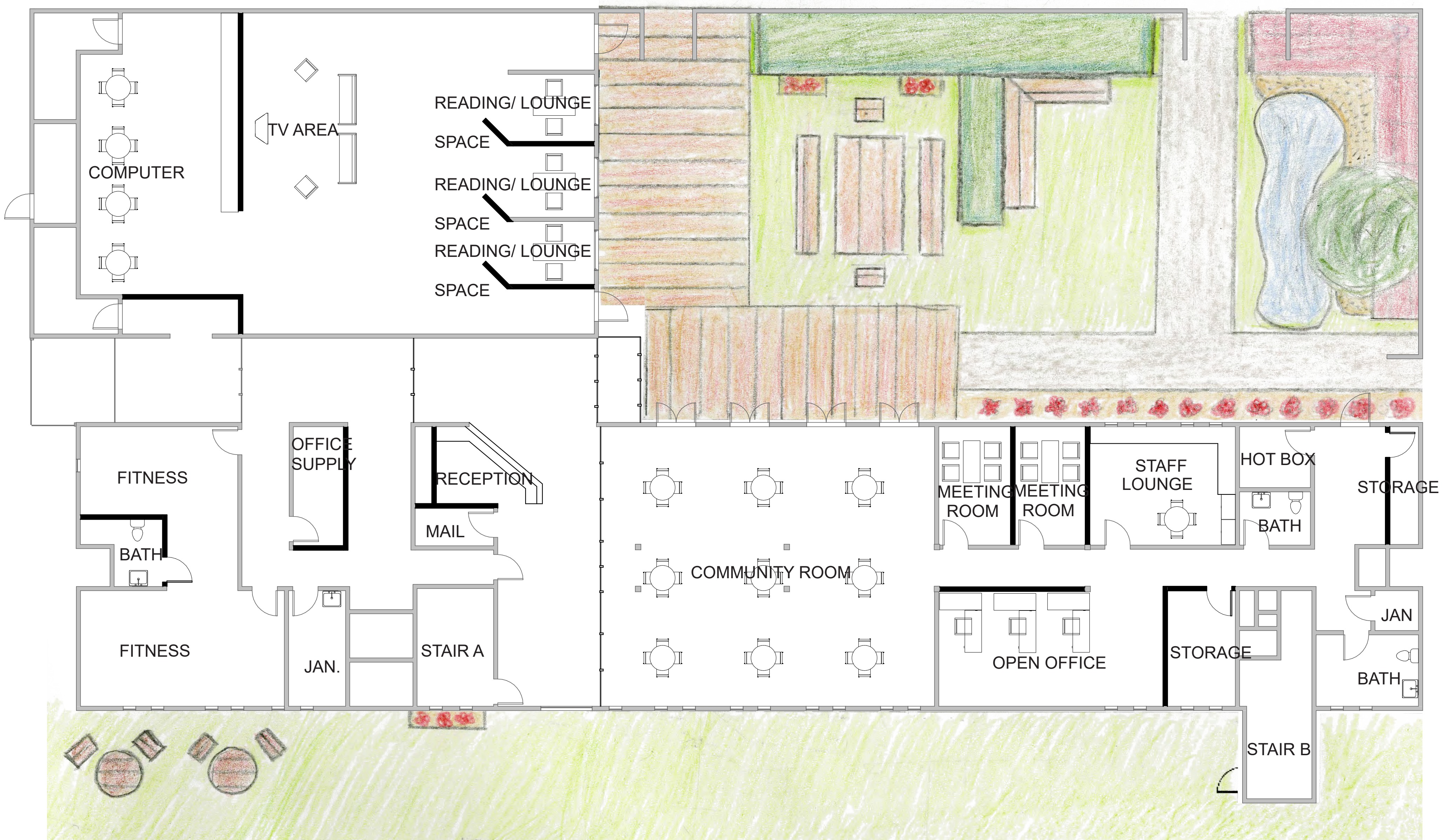


SPACE USE



CIRCULATION

PLAN

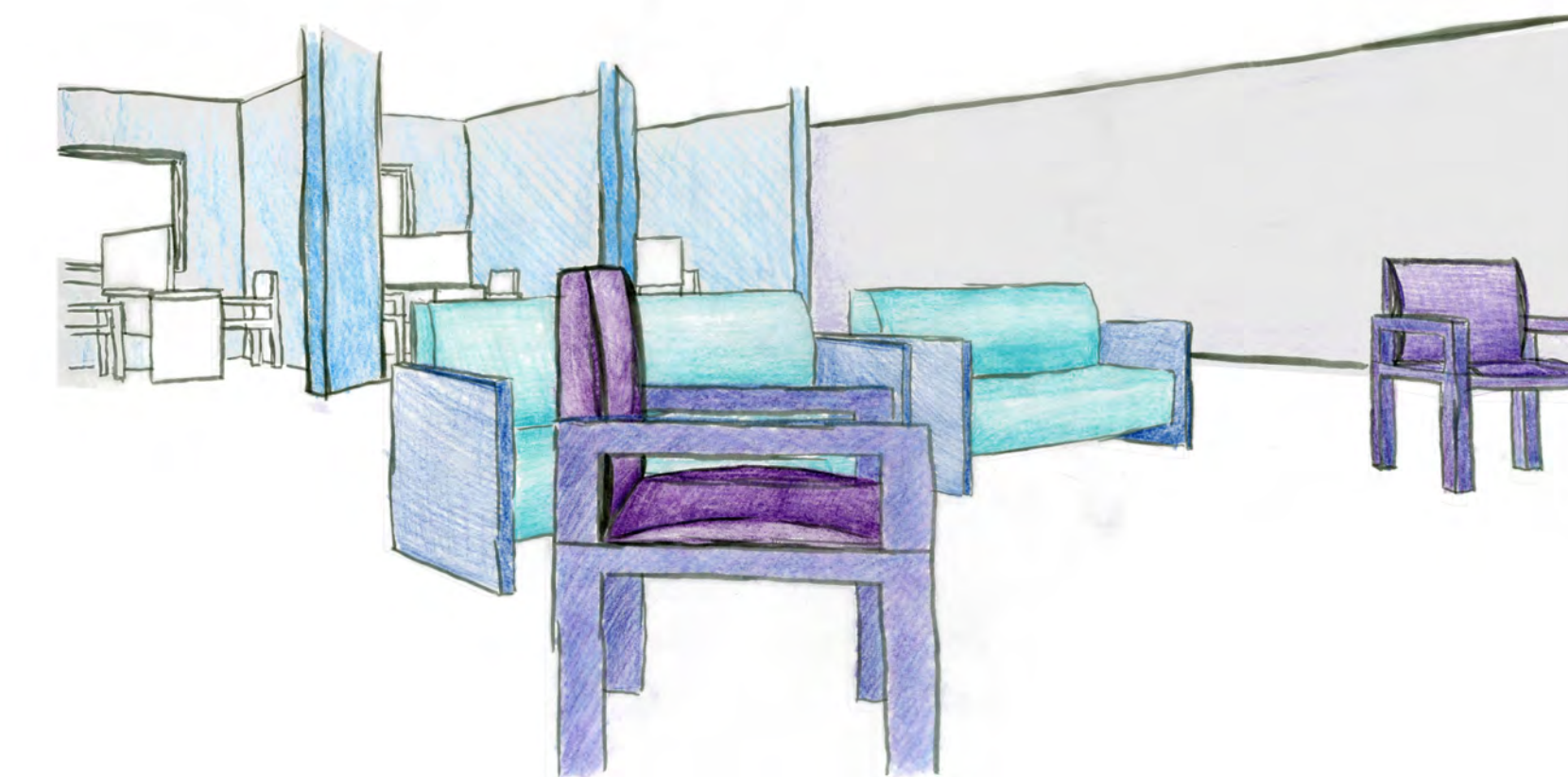


PERSPECTIVES

VIEW 1 - EXTERIOR



VIEW 2 - RESIDENTS COMMON SPACE



VIEW 3 - MEETING SPACE/ COMMUNITY LOUNGE

