

# PROJECT DESCRIPTION

Renovation of abandoned, 100 year old house into casual working space for the Northside Resident's Redevelopment Council with community gathering and learning spaces inside and out.

NRRC is a community development organization, they serve Near North and Willard Hay Neighborhoods by helping homeowners to buy and improve housing and fostering commercial development in the neighborhood.

### Offices

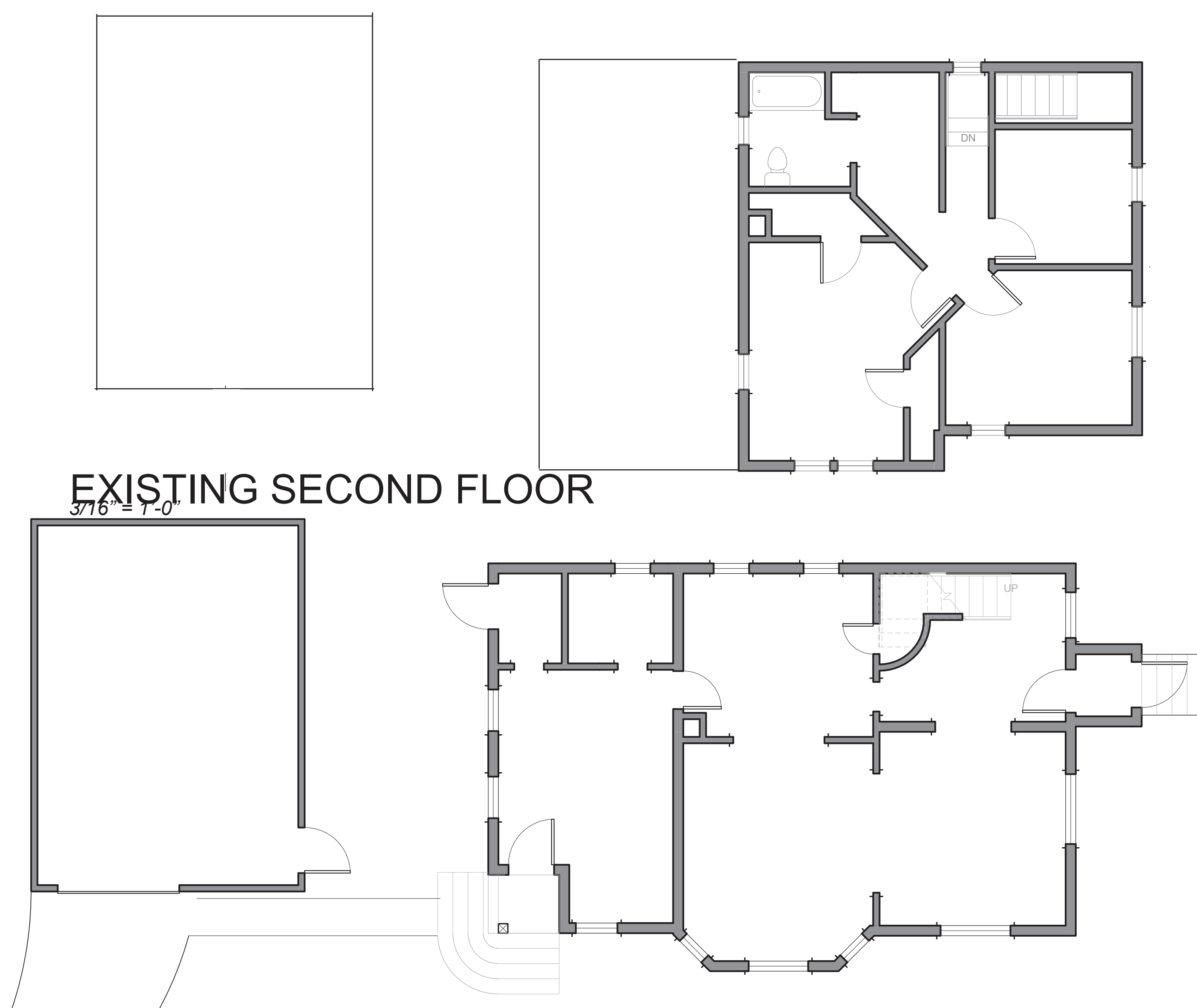
- 3 work spaces (informal)
- Conference room for 5-10

### Community Gathering/Learning

- Kitchen for classes/events
- Handicapped accessible bathroom
- Sideyard for parties, teaching
- Healthy living/eating activities



SITE PLAN



EXISTING SECOND FLOOR

EXISTING FIRST FLOOR



Northside Residents Redevelopment Council (NRRC)

PROJECT

2017 SEARCH FOR SHELTER DESIGN CHARRETTE  
 Creating Affordable Design Solutions to Meet Minnesota's Housing Needs Since 1987

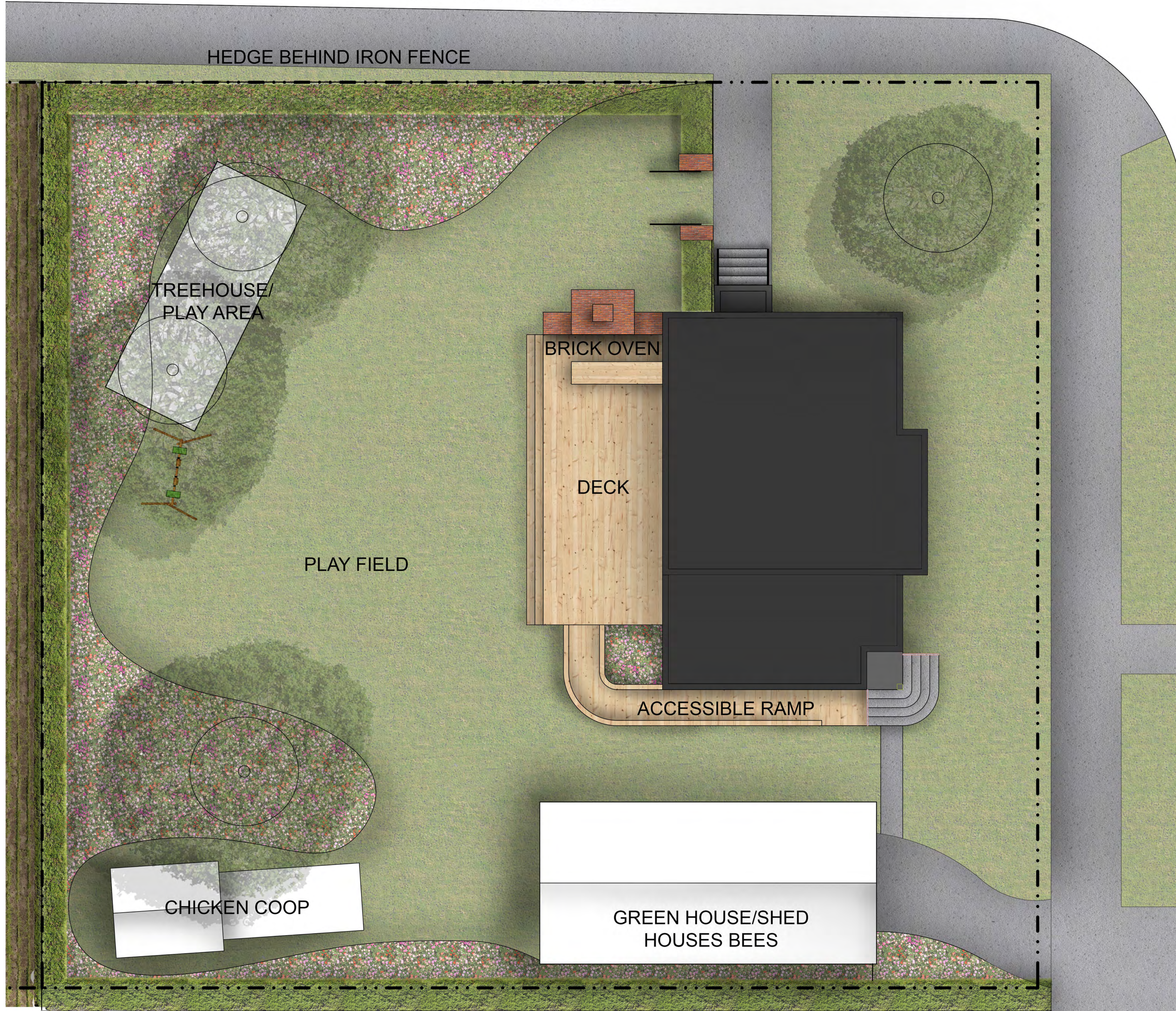
February 19, 2017  
[bit.ly/aiamsfs](http://bit.ly/aiamsfs)

Team 5:  
 Jacob Beaudet, Melanie Kiihn, Maria Kontopodi,  
 Aaron McCauley, Jacob Perez, Troy Raisanen



GOLDEN VALLEY ROAD

HEDGE BEHIND IRON FENCE



Northside Residents Redevelopment Council (NRRC)

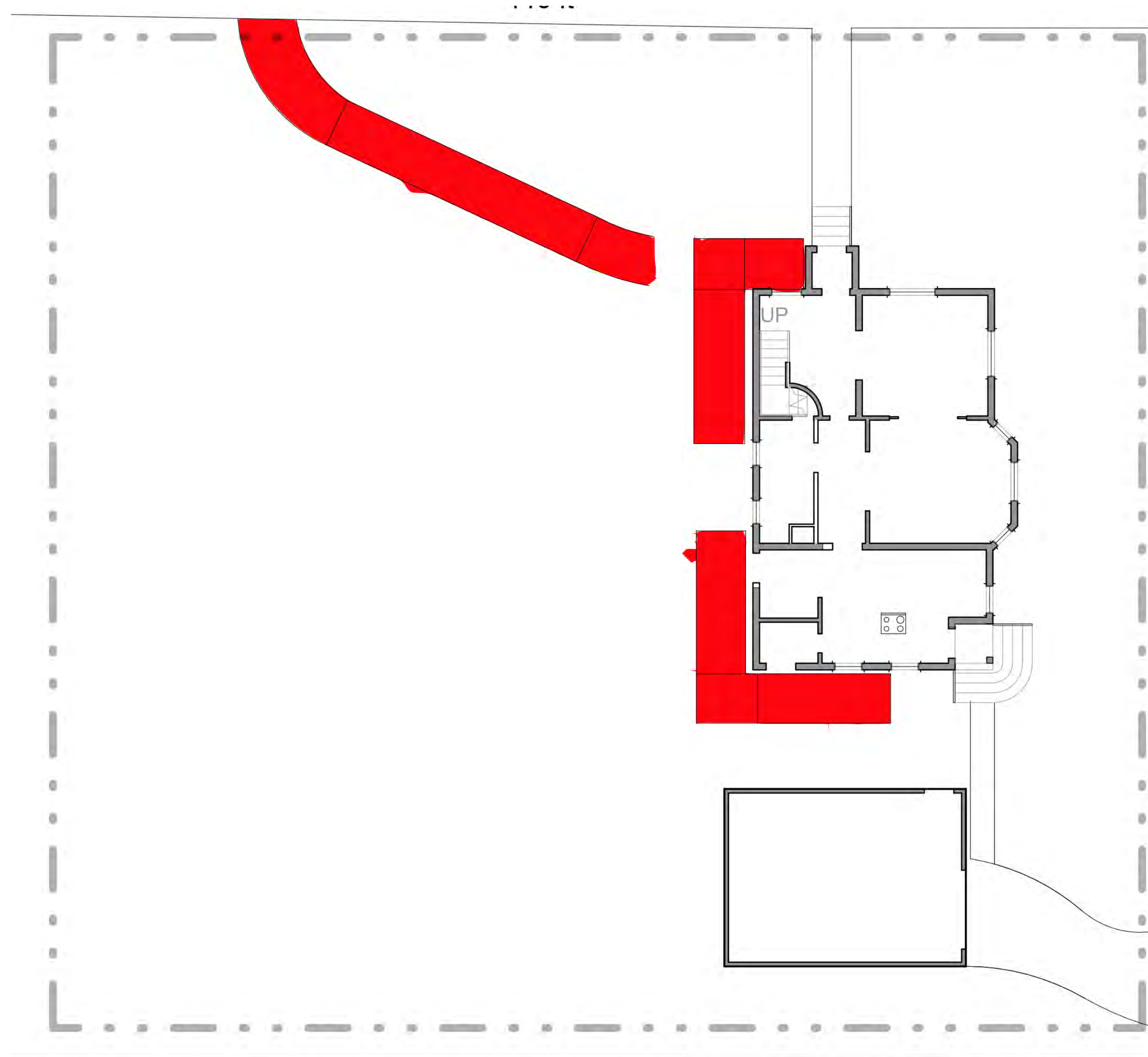
SITE

2017 SEARCH FOR SHELTER DESIGN CHARRETTE  
Creating Affordable Design Solutions to Meet Minnesota's Housing Needs Since 1987

February 19, 2017  
[bit.ly/aiamnsfs](http://bit.ly/aiamnsfs)

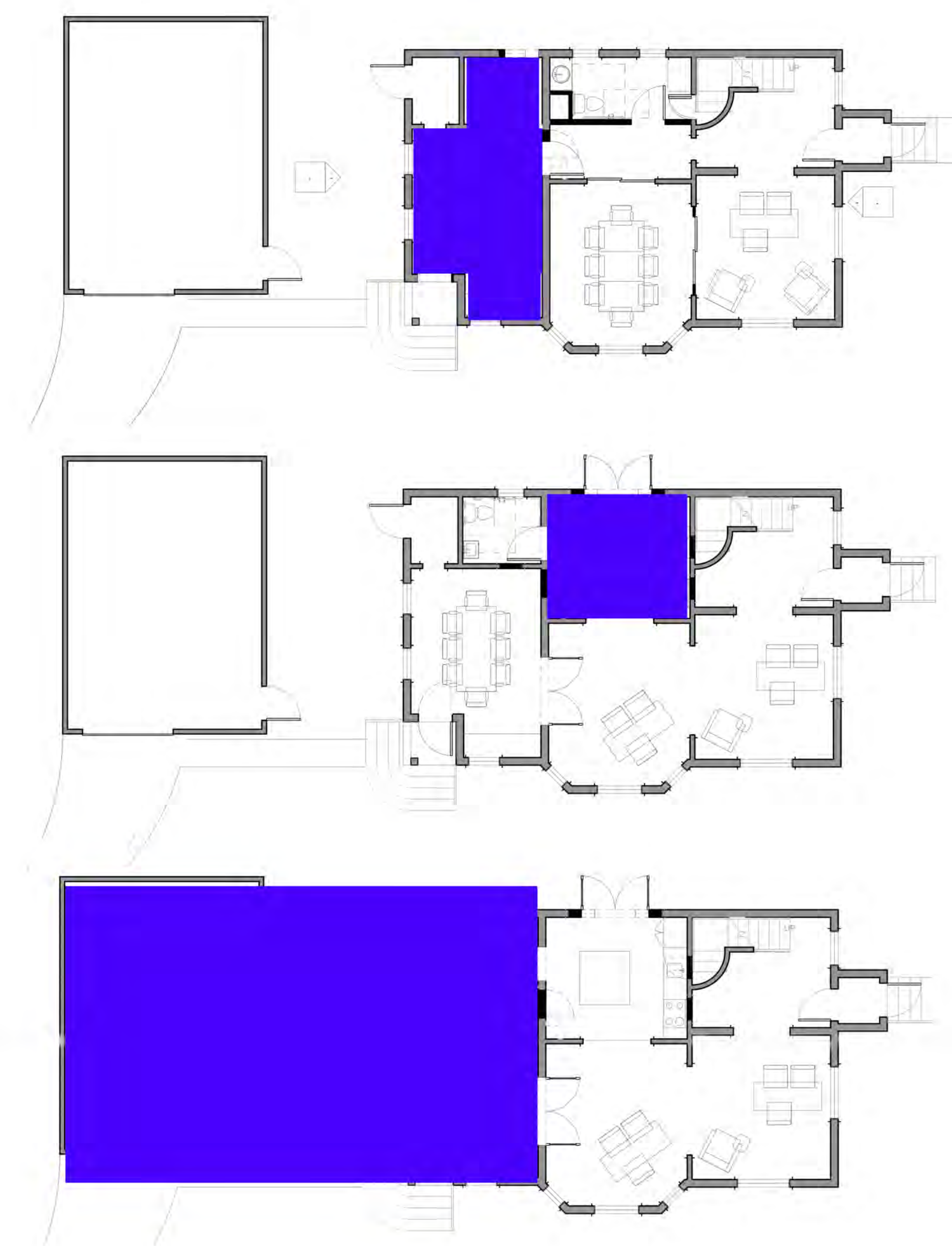
Team 5:  
Jacob Beaudet, Melanie Kiihn, Maria Kontopodi,  
Aaron McCauley, Jacob Perez, Troy Raisanen





## RAMP

28'-0" LONG AT 1:12 RAMP - RAILINGS REQUIRED  
 46'-8" AT 1:20 - SIDEWALK WITH NO RAILINGS REQUIRED



Northside Residents Redevelopment Council (NRRC)

**CHALLENGES**



# Northside Residents Redevelopment Council (NRRC)

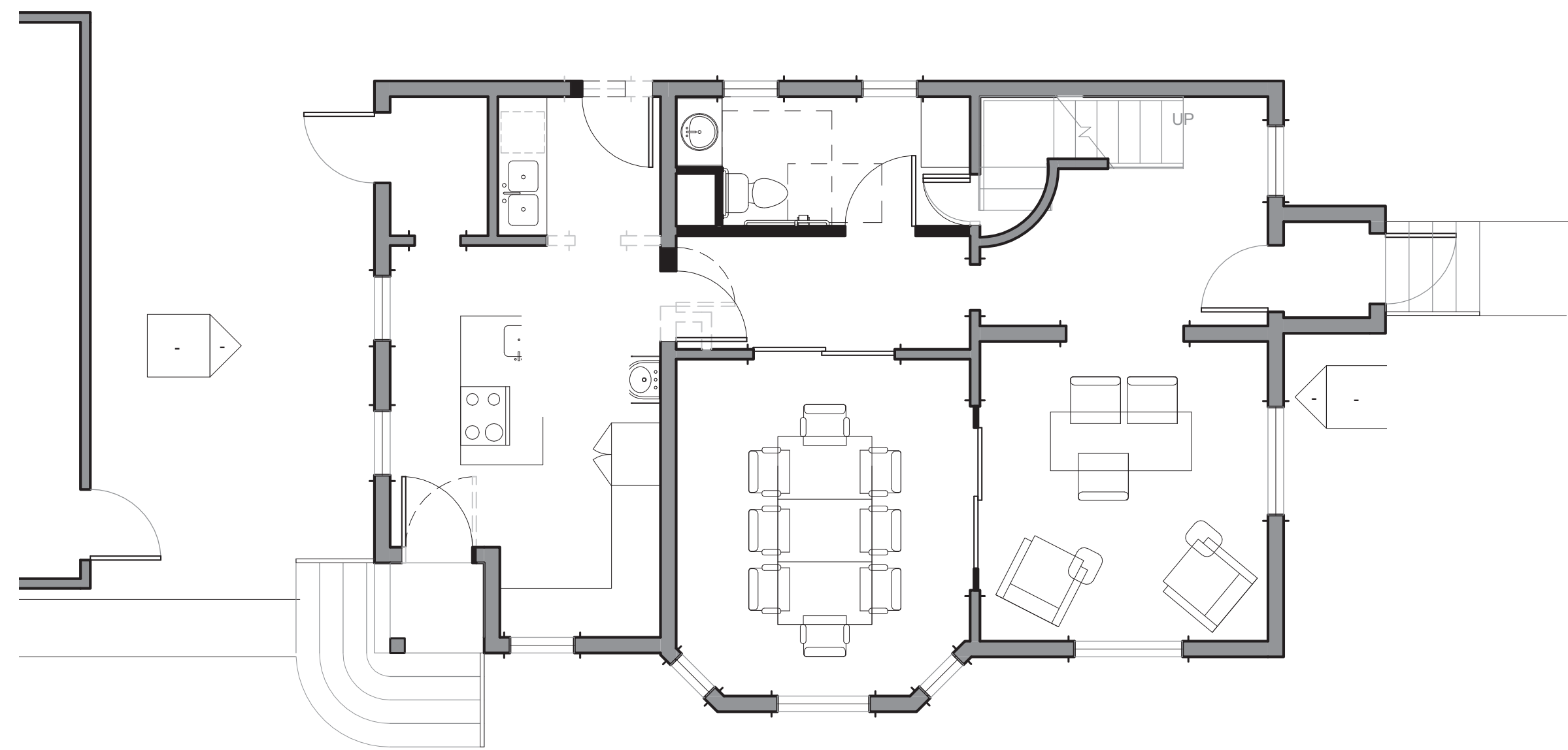
# EXTERIOR

2017 SEARCH FOR SHELTER DESIGN CHARRETTE  
 Creating Affordable Design Solutions to Meet Minnesota's Housing Needs Since 1987

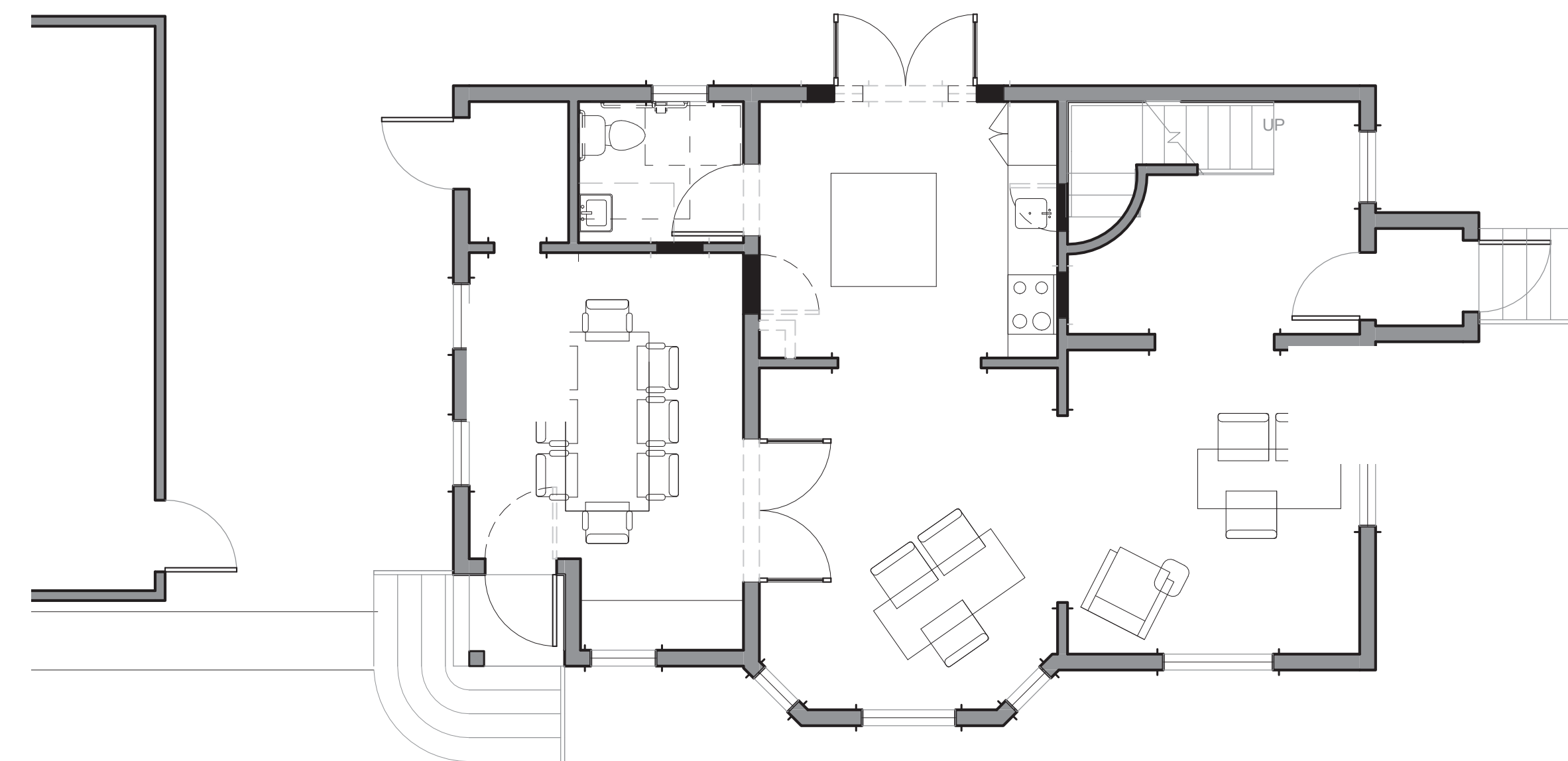
February 19, 2017  
[bit.ly/aiamnsfs](http://bit.ly/aiamnsfs)

Team 5:  
 Jacob Beudet, Melanie Kiihn, Maria Kontopodi,  
 Aaron McCauley, Jacob Perez, Troy Raisanen

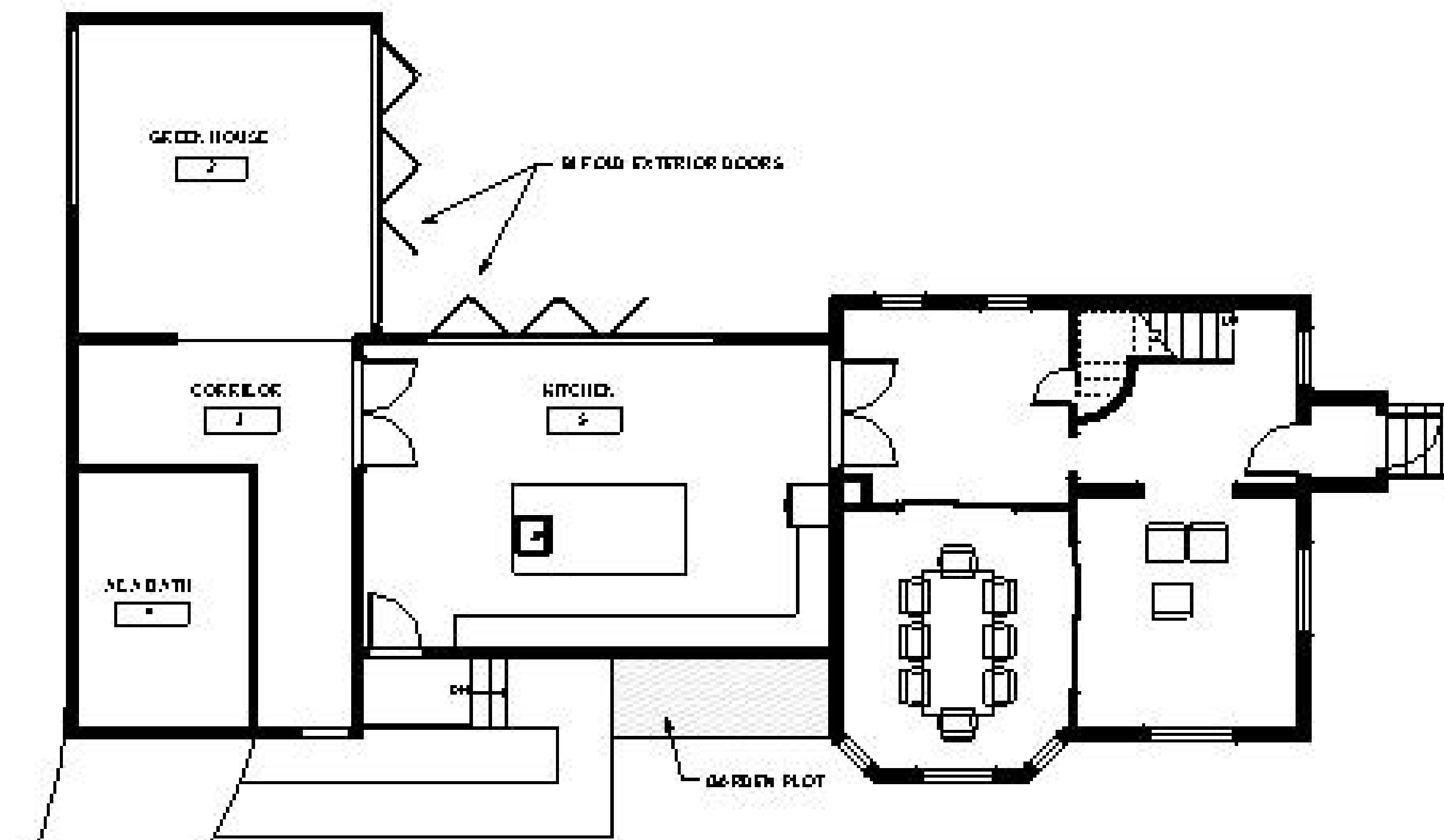




OPTION 1: COMMERCIAL KITCHEN  
3/16" = 1'-0"



OPTION 2: WARMING KITCHEN  
3/16" = 1'-0"



OPTION 3: LARGE ADDITION  
3/16" = 1'-0"



# Northside Residents Redevelopment Council (NRRC)

# INTERIOR