



Violence Intervention Project



(1) PARKING LOT IS LARGE AND HAS POTHOLES

(2) LACK OF PERSONAL OR PRIVATE SPACE

(3) HOUSING COMMON AREA IS OVERSIZED AND UNDERUSED

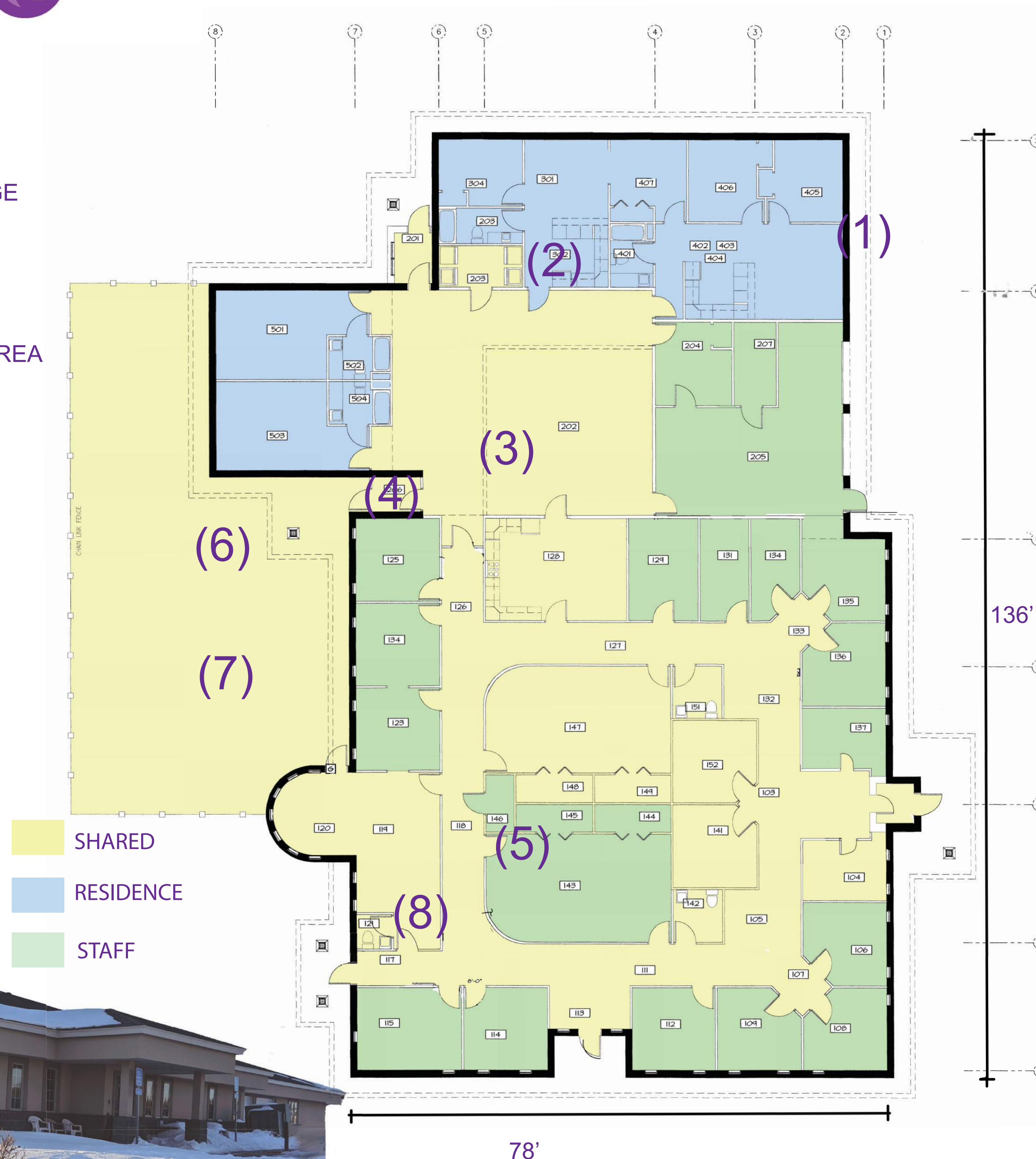
(4) SOUTH ENTRANCE IS UNDERUSED

(5) BOARDROOM LACKS VERSITILITY AND IS UNDERUSED

(6) LACK OF PRIVACY BUSHES/ PLANTINGS

(7) PLAYGROUND IS OUTDATED

(8) HALLWAYS ARE DREARY & BLAND



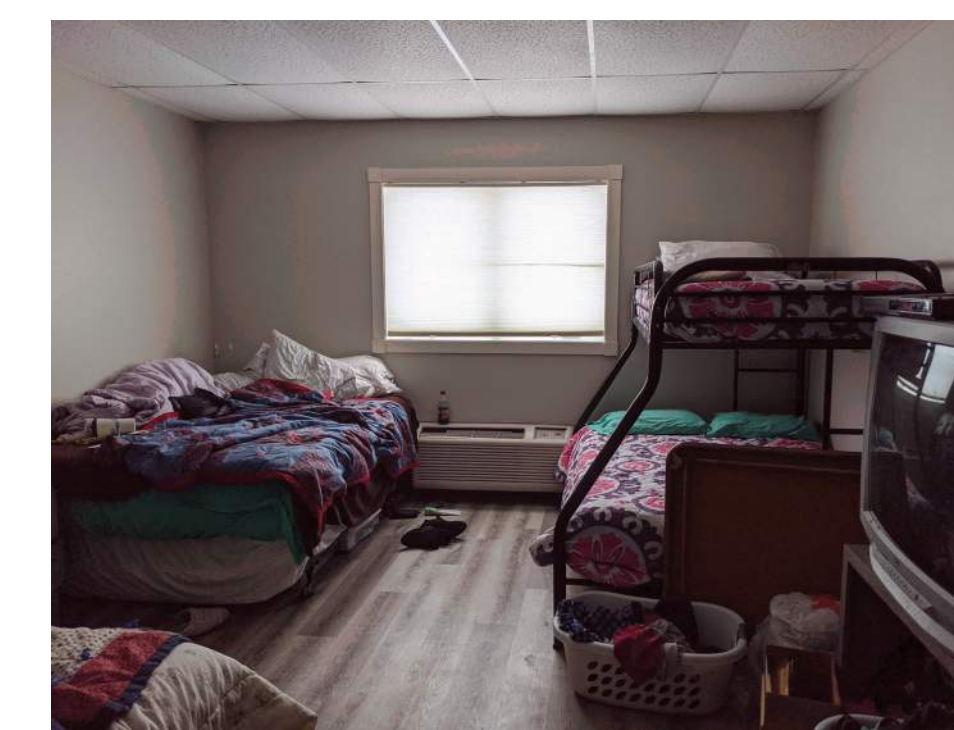
VIOLENCE INTERVENTION PROJECT IS A DOMESTIC AND SEXUAL VIOLENCE CENTER IN THIEF RIVER FALLS, MINNESOTA. IT OFFERS TRANSITIONAL HOUSING AND SUPPORTIVE SERVICES TO VICTIMS AND THEIR CHILDREN.

IN ORDER TO CREATE A MORE TRAUMA SENSITIVE ENVIRONMENT FOR CLIENTS AND THEIR FAMILIES, THE CENTER NEEDS SPACES THAT ARE CALMING, COMFORTABLE AND WELCOMING. GOALS FOR THE REMODEL INCLUDE:

- REDESIGN THE COMMON ROOM
- IMPROVE FUNCTIONS OF THE OFFICE WING
- REDESIGN STORAGE SPACES TO BETTER SUIT THE CLIENTS NEEDS
- IMPROVE LANDSCAPING WITH PLANTINGS FOR PRIVACY AND COMMUNITY
- EXPAND THE SHELTER IN ORDER TO CREATE MORE EMERGENCY BEDROOMS AND TRANSITIONAL HOUSING

[EXISTING CONDITONS]

(2)



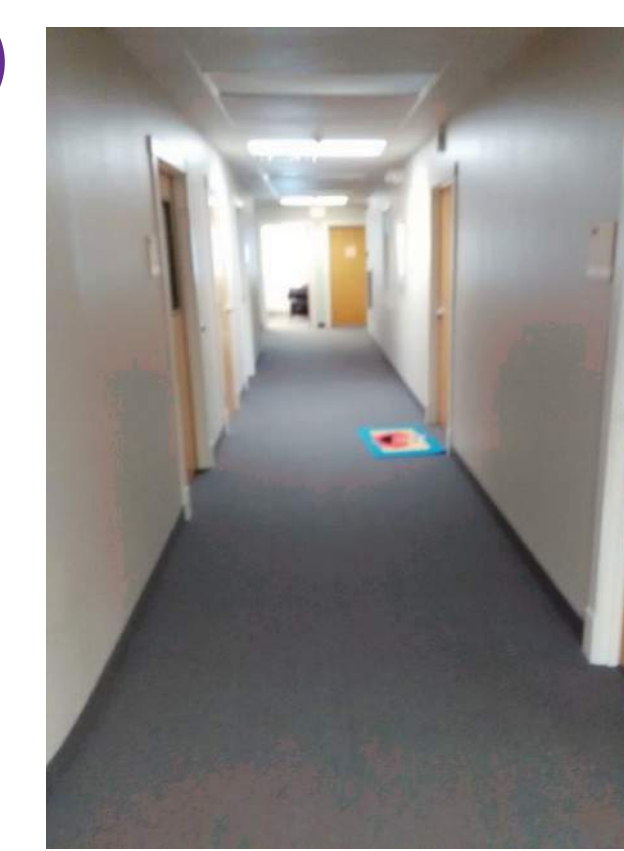
(3)



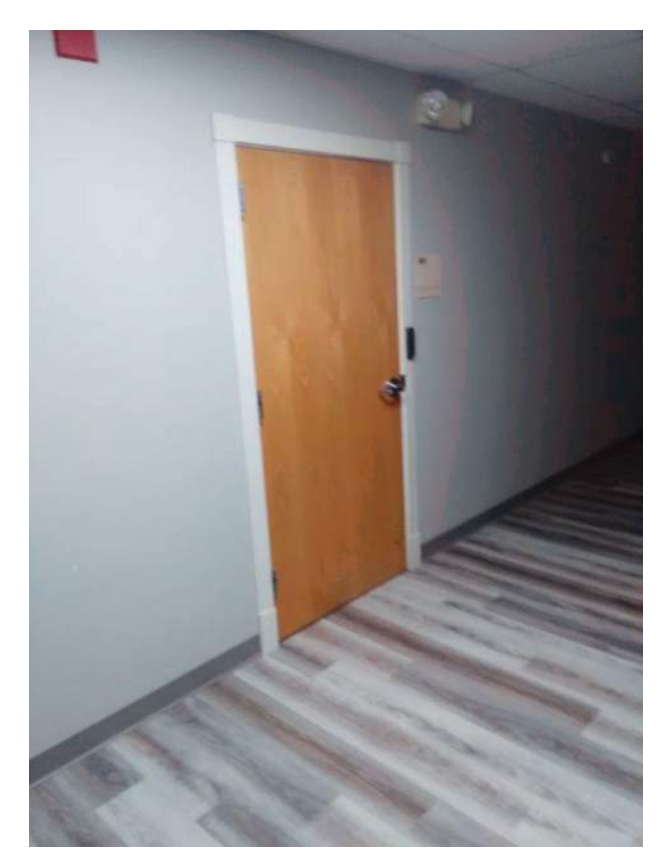
(3)



(8)



(8)



2020 SEARCH FOR SHELTER DESIGN CHARRETTE

Creating Affordable Design Solutions to Meet Minnesota's Housing Needs Since 1987

February 8, 2020 GROUP 6: SAM BUSMAN | XIN HU | MEGHAN KRESS | ANDREW NELSON | BECCA STALEY

bit.ly/aiamnfs



AIA
Minnesota

HOUSING ADVOCACY COMMITTEE

SEARCH FOR SHELTER
CELEBRATING

30
YRS



Violence Intervention Project

PHASE 1 - OFFICE REMODEL



CLIENT & STAFF ENTRANCE



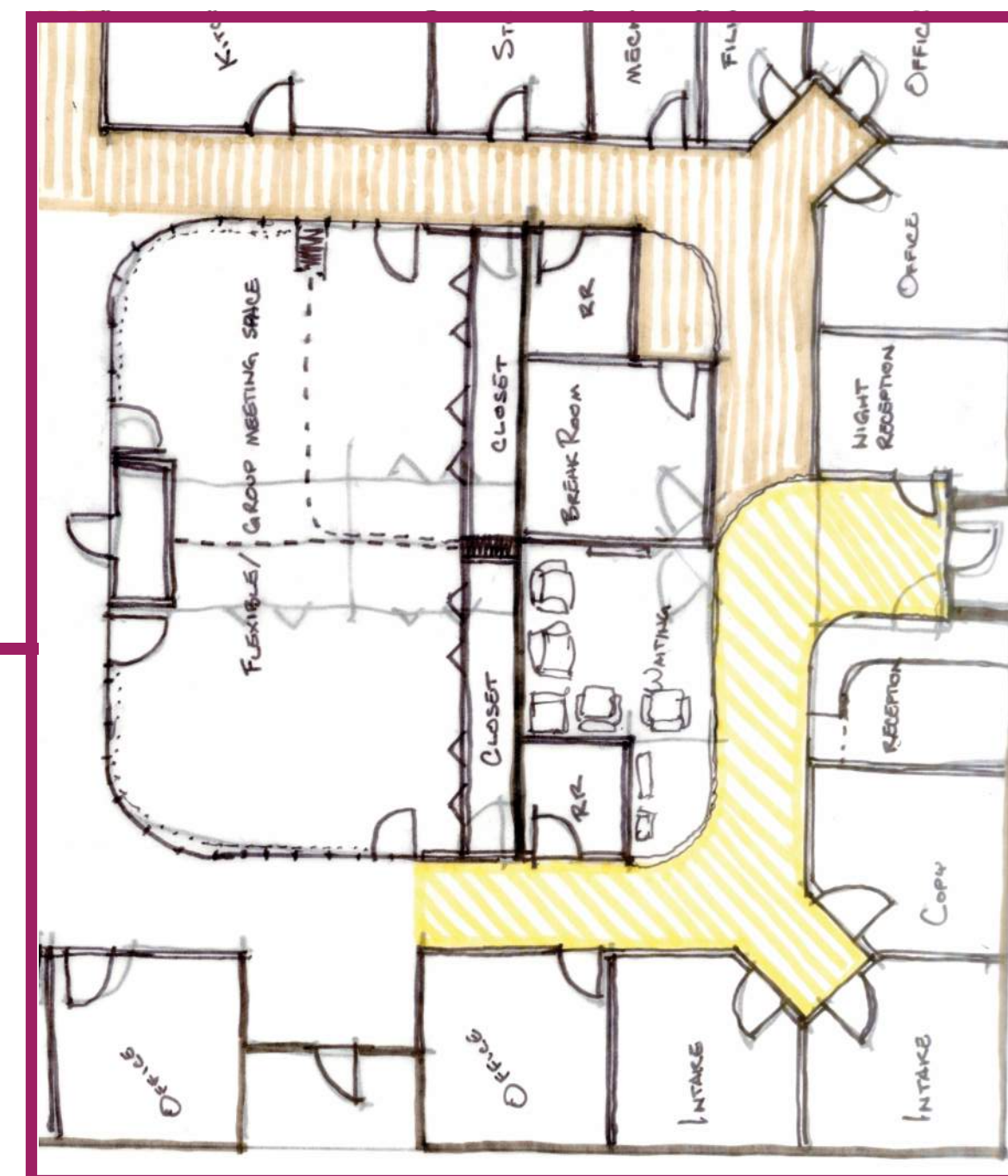
FLEX SPACE / BOARD ROOM

OFFICE / STAFF SPACE

GOALS:

- INVITING COLORS, BASED IN NATURE
- VARIETY OF FUNCTIONS AT OLD BOARD ROOM [FLEX SPACE]
- MORE STORAGE
- STAFF ROOM WITH SINK
- MORE WELCOMING ENTRANCE WITH IMPROVED WAY-FINDING

NEW STAFF BREAK ROOM
WHERE SINK EASILY ADDED



REORGANIZED ENTRY
SEQUENCE TO BE MORE
WELCOMING AND ASSIST IN
WAYFINDING

REORGANIZED MULTI-PURPOSE
ROOMS, MORE EFFICIENT
STORAGE

RELOCATED INTAKE ROOMS



2020 SEARCH FOR SHELTER DESIGN CHARRETTE

Creating Affordable Design Solutions to Meet Minnesota's Housing Needs Since 1987

February 8, 2020 GROUP 6: SAM BUSMAN | XIN HU | MEGHAN KRESS | ANDREW NELSON | BECCA STALEY
bit.ly/aiamnsfs



AIA
Minnesota

HOUSING ADVOCACY COMMITTEE

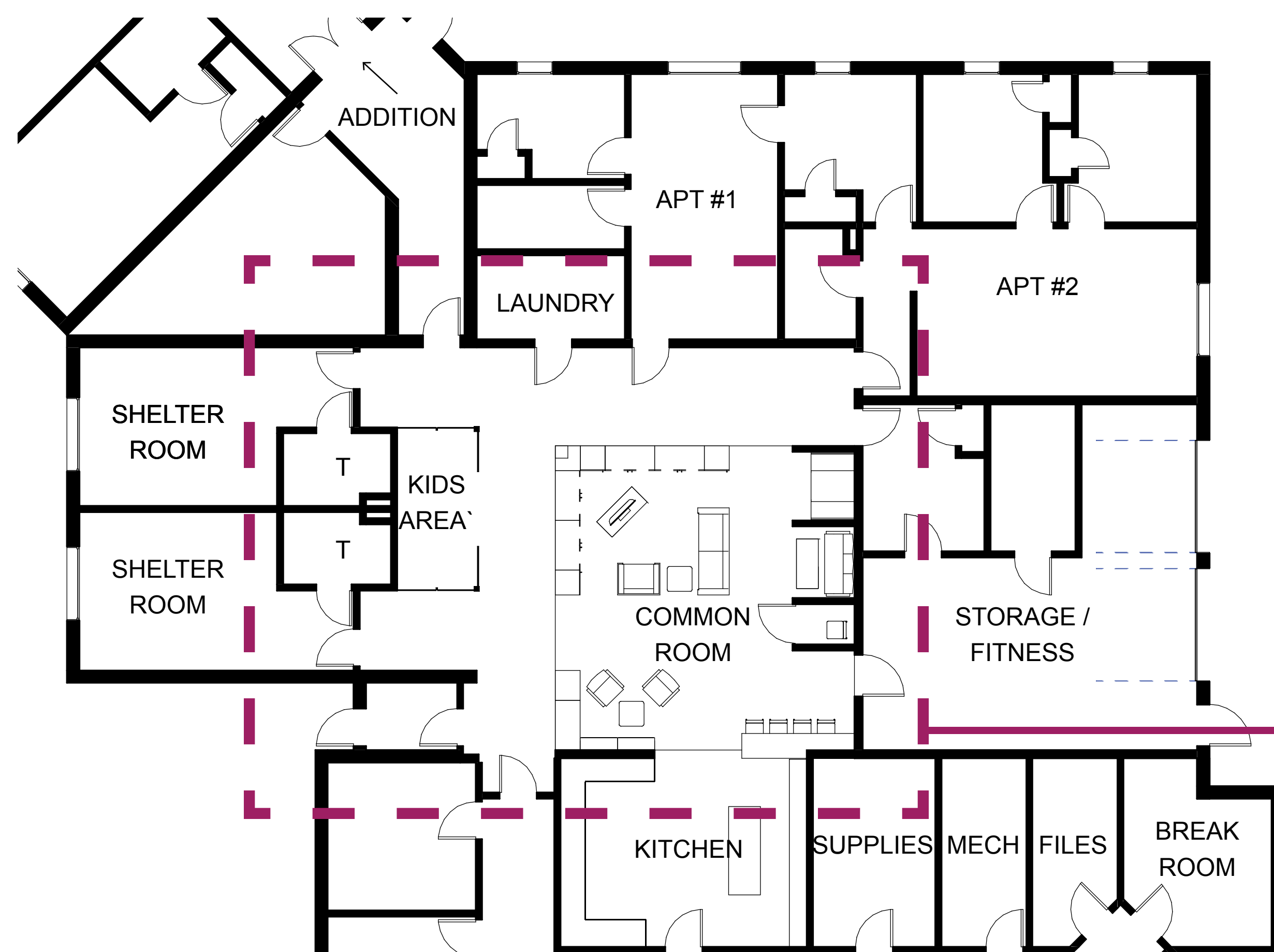
SEARCH FOR SHELTER
CELEBRATING

30
YRS



Violence Intervention Project

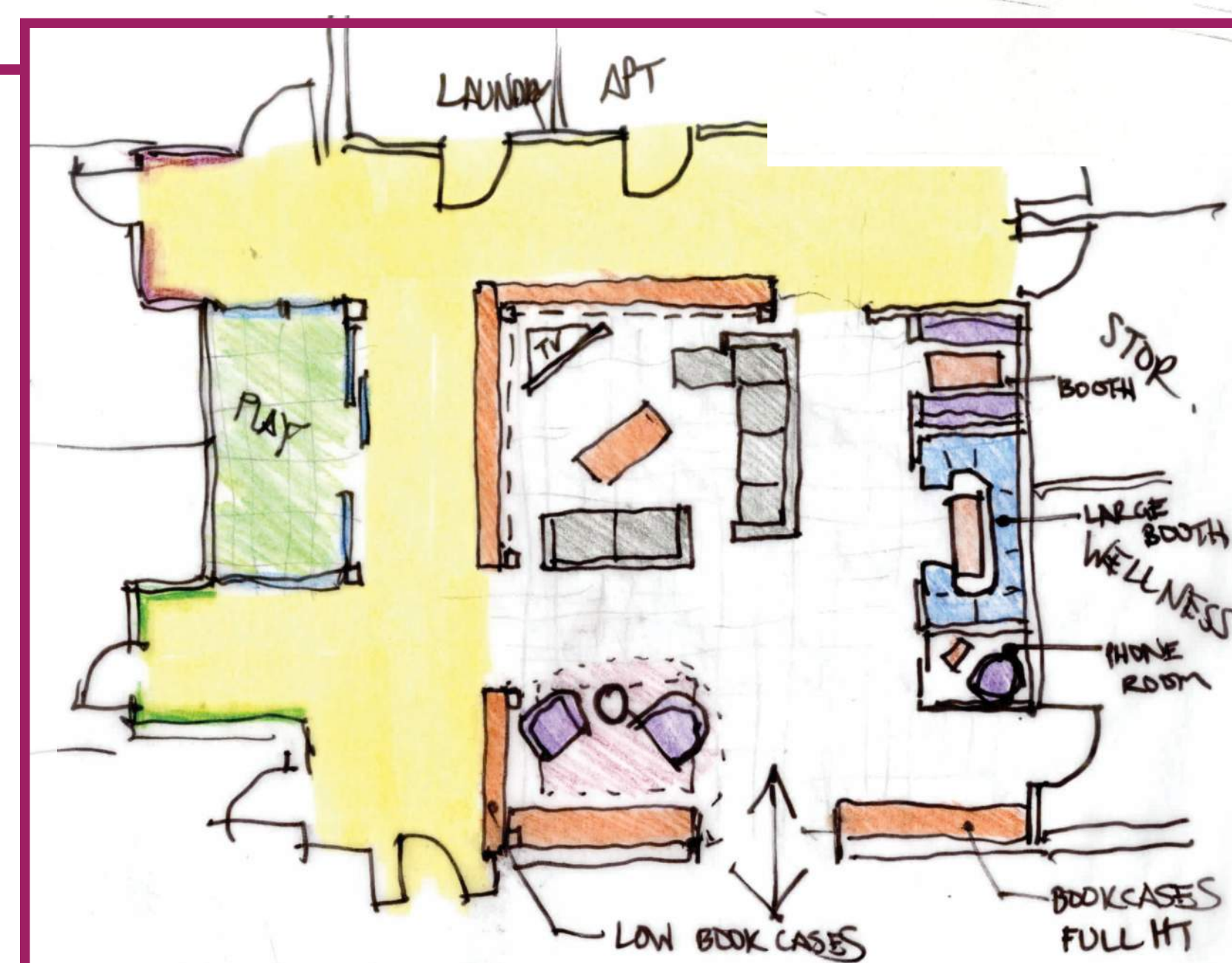
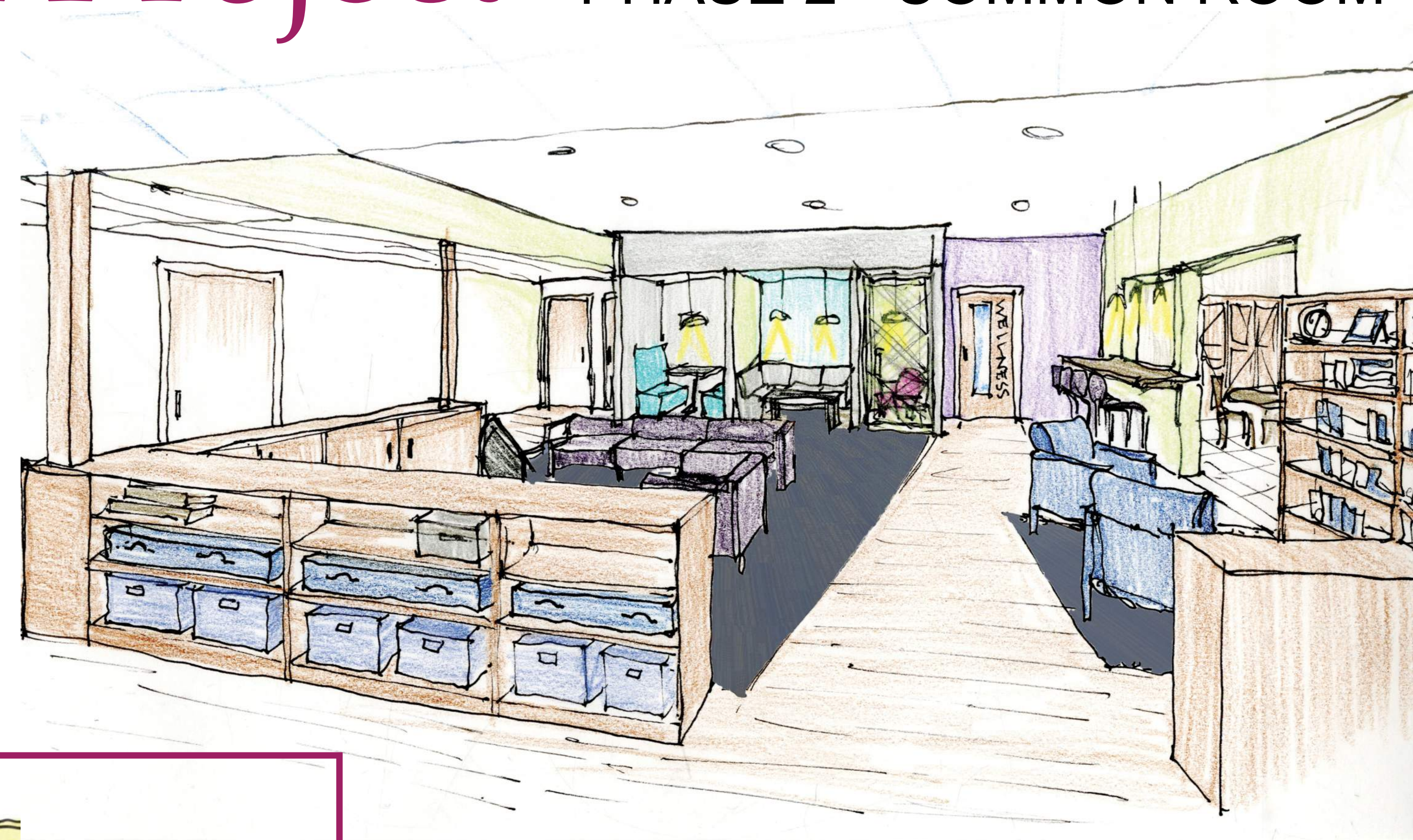
PHASE 2 - COMMON ROOM



COMMON ROOM

NEEDS:

- VISIBLE BUT CONTAINED PLAY SPACE FOR CHILDREN
- INVITING COLORS BASED ON NATURE
- VARIETY OF FUNCTIONS & SCALES OF SPACE
- MORE STORAGE
- LOCKABLE PERSONAL STORAGE
- STORAGE CAN BE USED TO DELINEATE SPACE
- MORE RESIDENTIAL - OPEN TO KITCHEN



- CALMING COLORS
- WARM WOOD TONES
- ENERGETIC FLOOR PATTERNS
- TRANSLUCENT WALL PANELS ALLOW DAYLIGHT WHILE MAINTAINING PRIVACY
- RESIDENTIAL STYLE LIGHTING AT SEATING AREAS
- THIN RECESSED LIGHTING AT HALL SPACES

MATERIAL & COLOR PALETTE

2020 SEARCH FOR SHELTER DESIGN CHARRETTE

Creating Affordable Design Solutions to Meet Minnesota's Housing Needs Since 1987

February 8, 2020 | GROUP 6: SAM BUSMAN | XIN HU | MEGHAN KRESS | ANDREW NELSON | BECCA STALEY
bit.ly/aiaamnsfs



AIA
Minnesota

HOUSING ADVOCACY COMMITTEE

SEARCH FOR SHELTER
CELEBRATING 30 YRS

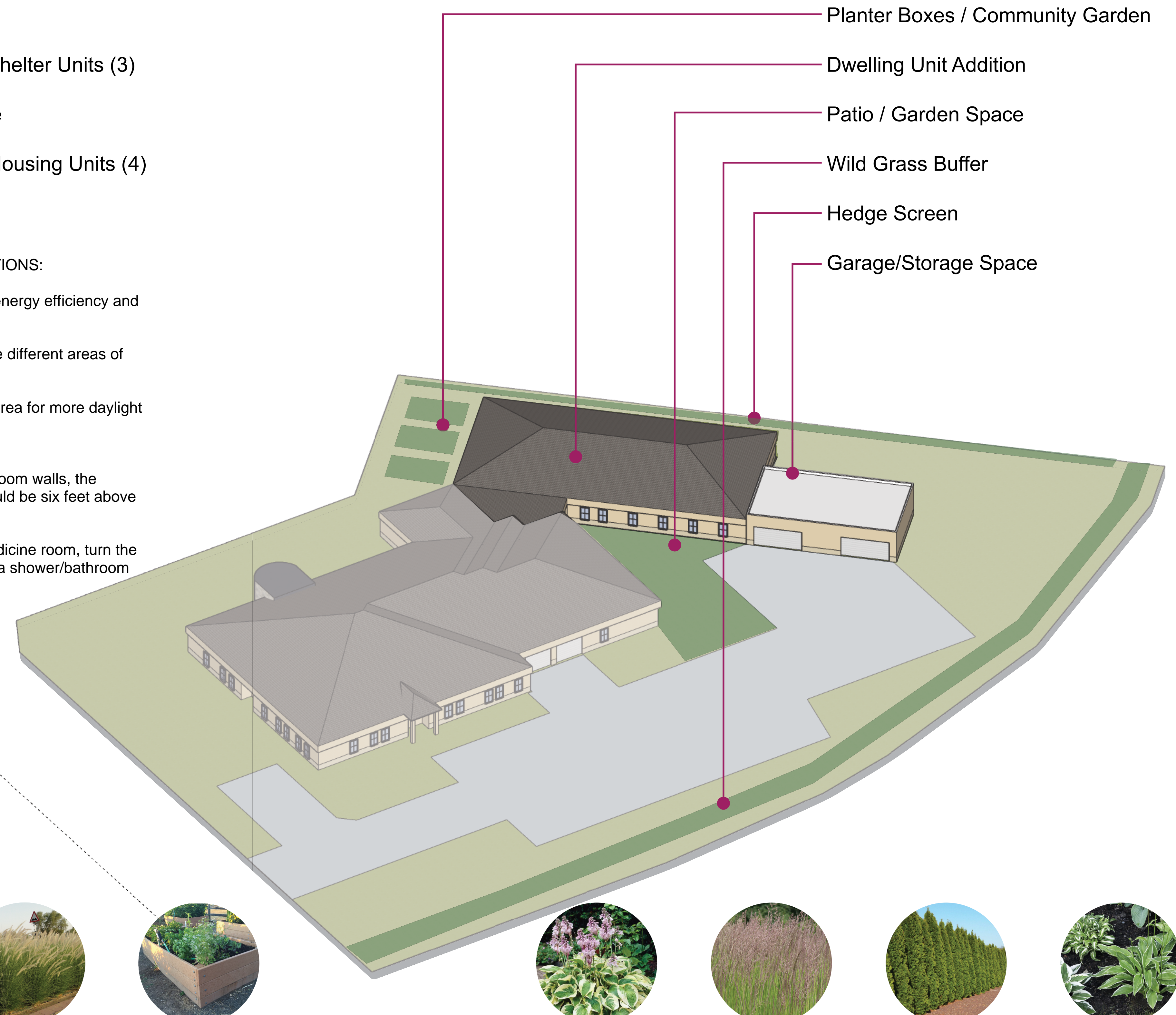


Violence Intervention Project

PHASE 3 - ADDITION

Phase #3 - Addition

An addition to the existing building includes 4 new transitional housing units, 3 more emergency shelter units, a large garage / storage facility, and community garden space.



2020 SEARCH FOR SHELTER DESIGN CHARRETTE

Creating Affordable Design Solutions to Meet Minnesota's Housing Needs Since 1987

February 8, 2020 GROUP 6: SAM BUSMAN | XIN HU | MEGHAN KRESS | ANDREW NELSON | BECCA STALEY

bit.ly/aiamnfs



AIA
Minnesota

HOUSING ADVOCACY COMMITTEE

SEARCH FOR SHELTER
CELEBRATING

30
YRS