

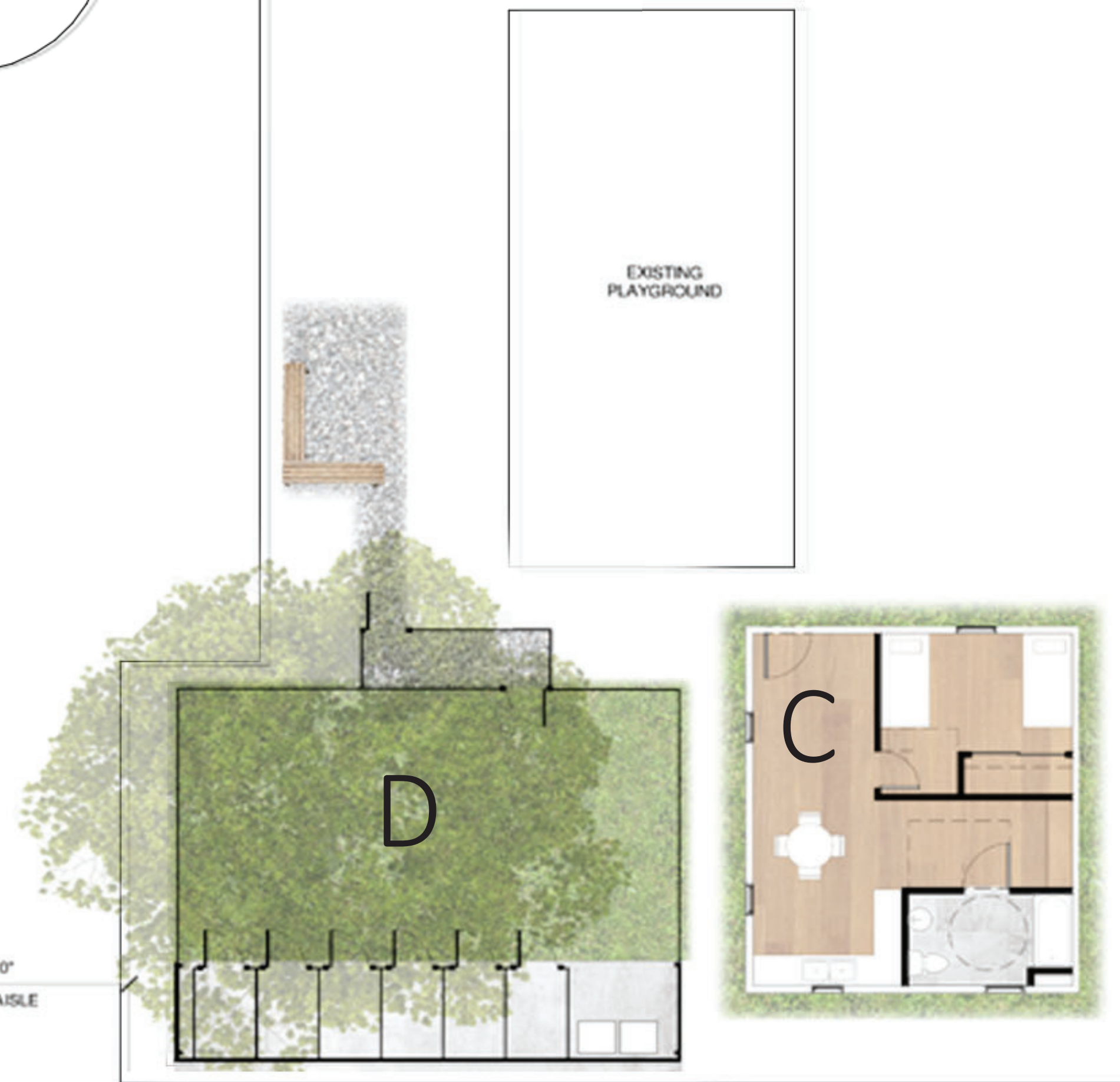
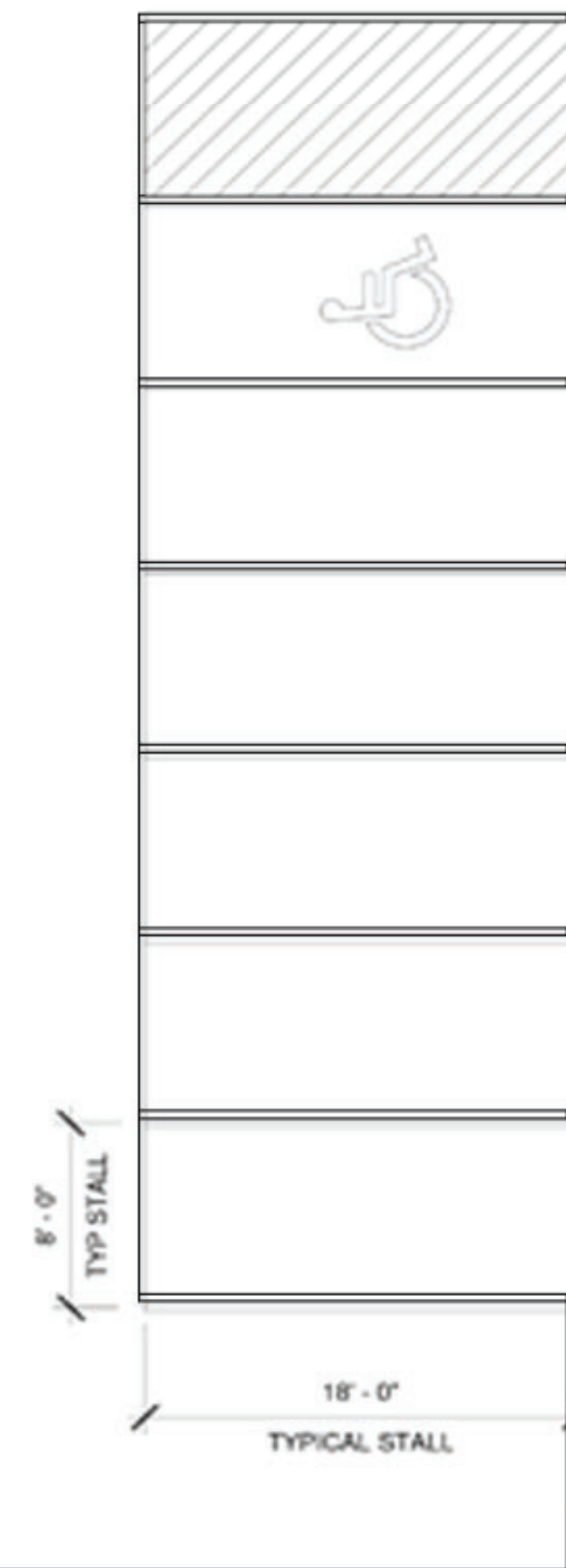


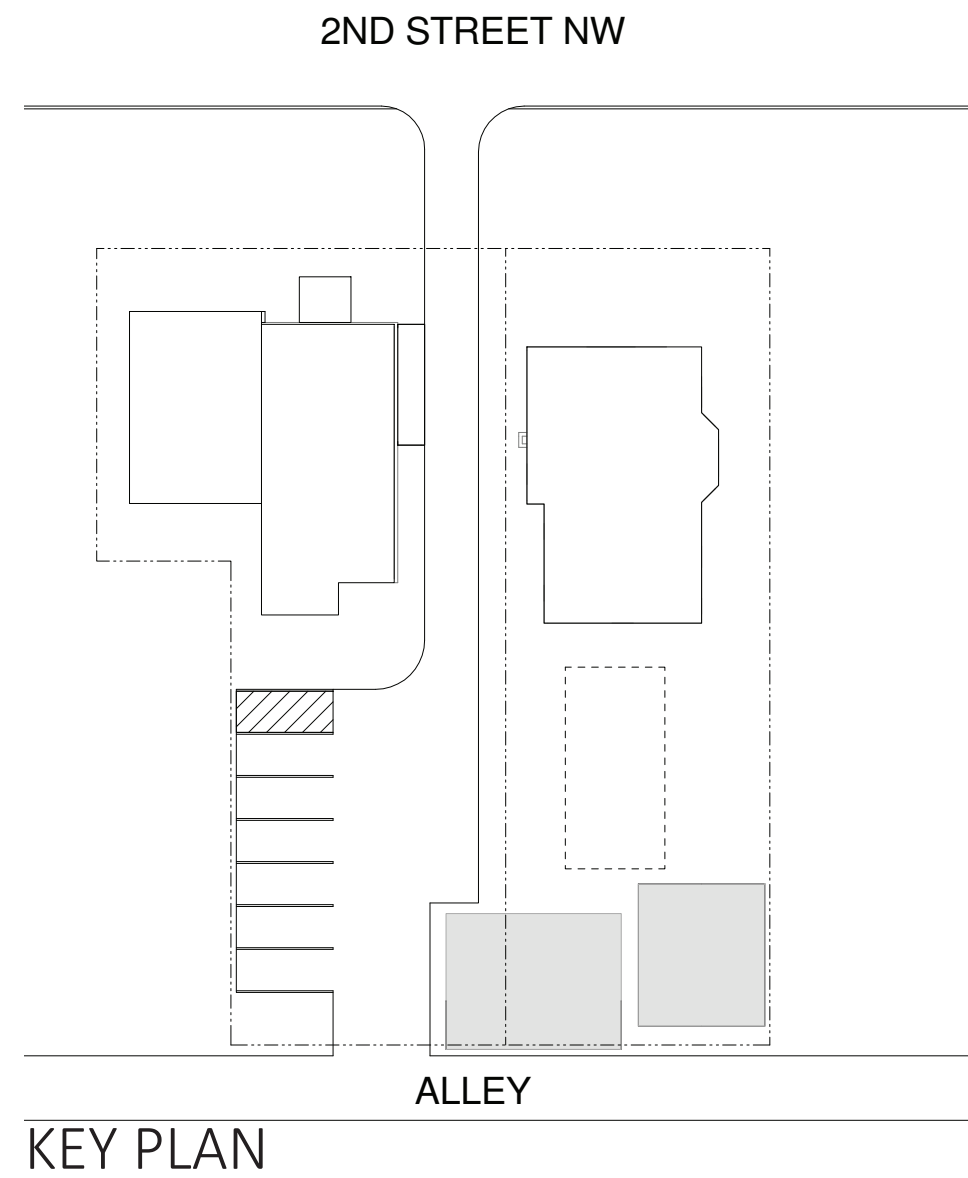
HOPE IS LOCATED IN AITKIN MINNESOTA

HOPE STANDS FOR HEALING OPPORTUNITY PROVIDED EQUALLY. THEIR ORGANIZATION PROVIDES SHELTER AND LEGAL SERVICES FOR VICTIMS OF DOMESTIC ABUSE. YOU CAN FIND EMERGENCY SHELTER, LONGER TERM CARE, AND COMPASSION AT HOPE.

THE AGENCY IS HOUSED IN TWO SEPARATE BUILDINGS, ONE CONTAINING APARTMENTS AND A SUPERVISED VISITATION SPACE, THE OTHER, THEIR OFFICES, A BASEMENT, LAUNDRY ROOM, AND MORE APARTMENTS. THE BACKYARD OF THE COMBINED PROPERTIES HAS A GARAGE, GRAVEL PARKING SPACE, AND SMALL PLAYGROUND.

OUR CHARGE WAS TO RE-IMAGINE THE USE OF THE EXISTING SPACE TO CREATE MORE OPPORTUNITIES FOR THE RESIDENTS TO GATHER AND SUPPORT EACH OTHER. WE RESTRUCTURED AND REINVIGORATED EXISTING SPACES TO PROVIDE MORE GROUP EMERGENCY SHELTER SPACES, OUTDOOR PLAY SPACE AND A HOME FOR ACCOMPANYING PETS, AND INDOOR PLAY AND GATHER SPACE ADJACENT TO THE LAUNDRY ROOM.

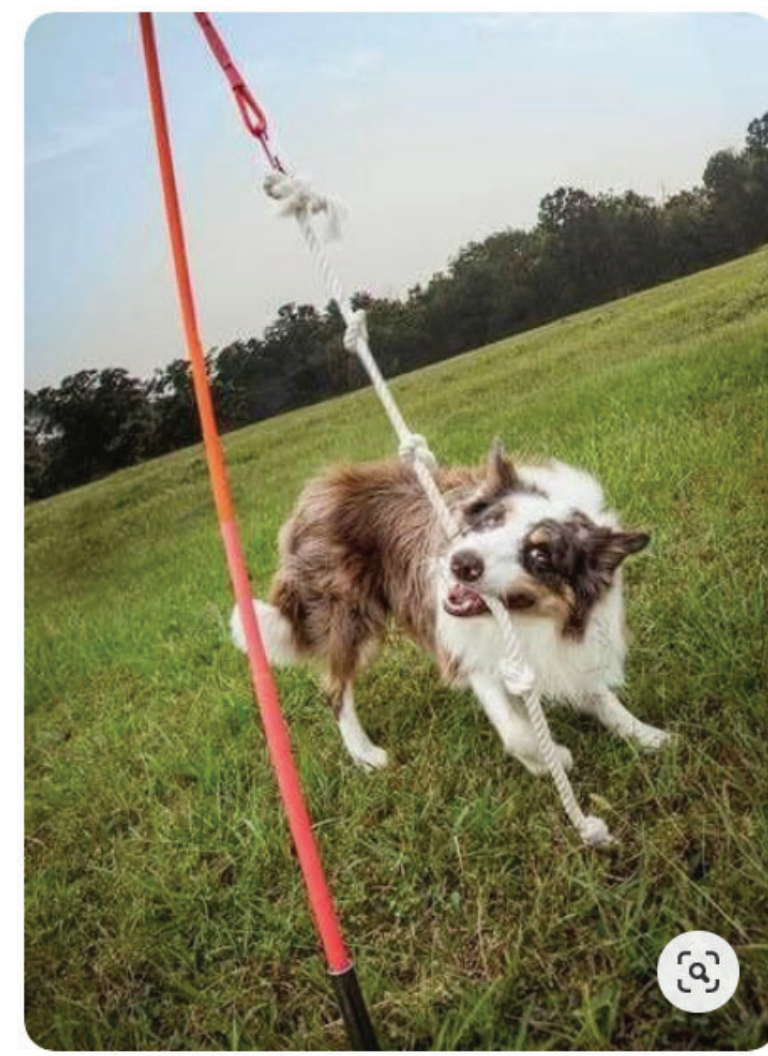




EXISTING CONDITIONS



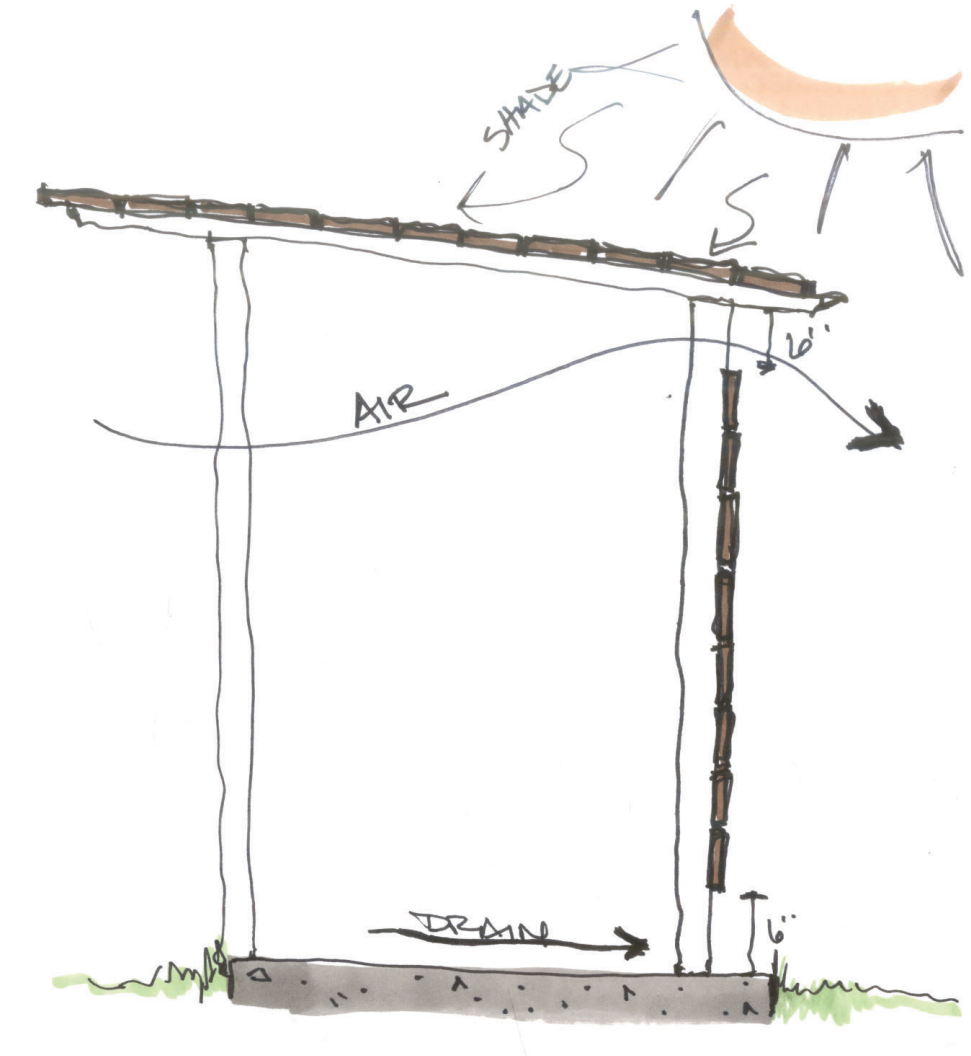
EXAMPLE DOG RUN



EXAMPLE DOG TOY



SHELTER CONSTRUCTION



SECTION AT SHELTER

OBJECTIVE 1: THE BACKYARD

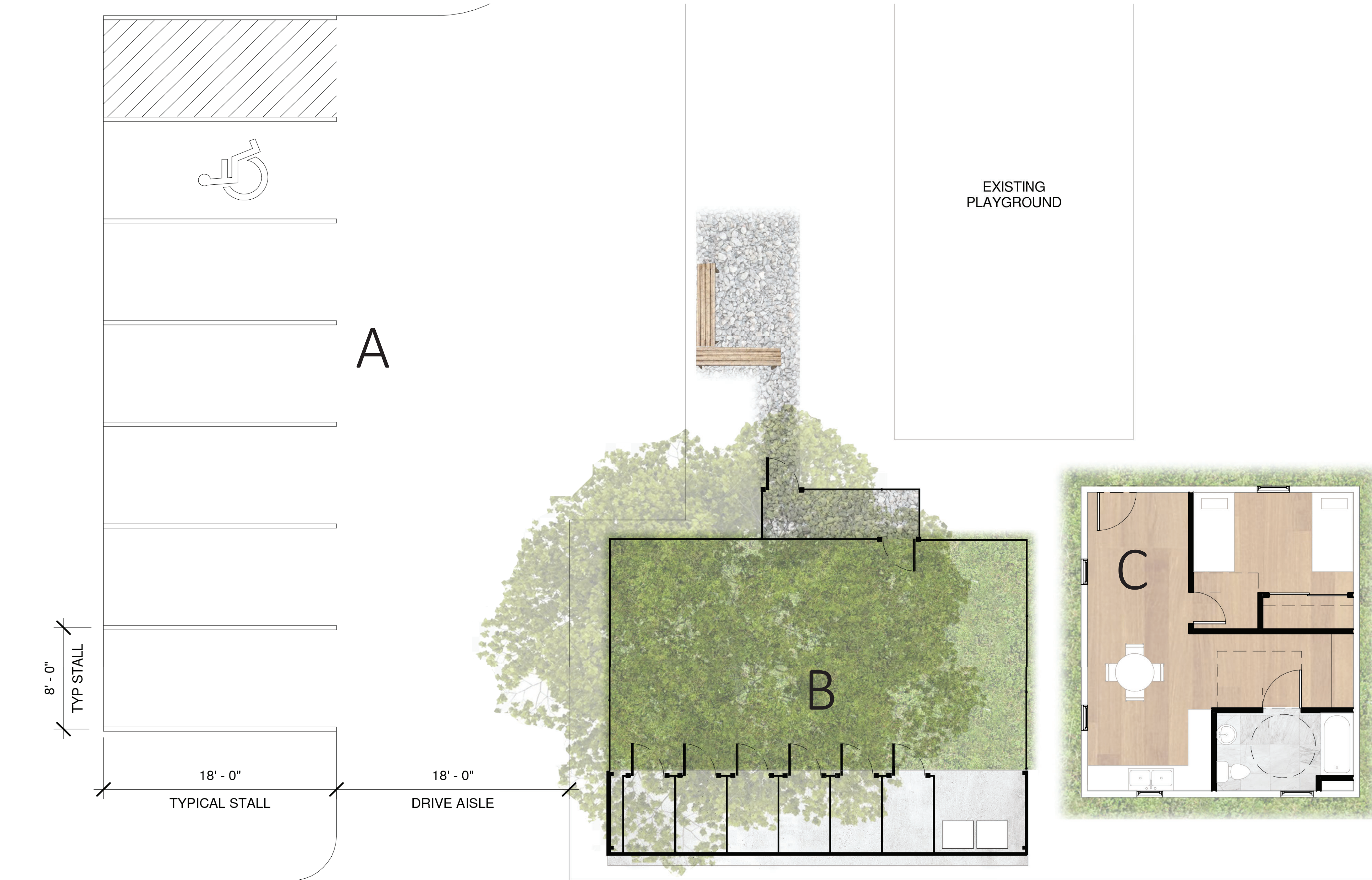
HOPE NEEDED A PAVED AND STRIPED SURFACE LOT, IDEAS FOR A DOG KENNEL AND RUN THAT COULD INCORPORATE OUTDOOR SEATING AND GATHERING SPACE WITHIN VIEW OF THEIR PLAYGROUND.

THE EXISTING GARAGE CURRENTLY SERVES AS A STORAGE SPACE, BUT OPTIONS WERE PROVIDED FOR A CONVERSION OF THE SPACE INTO ADDITIONAL, POTENTIALLY LONGER TERM EMERGENCY HOUSING

- A. NEW STRIPING PLAN
 - 5 STANDARD SPACES
 - 1 ADA SPACE
 - 18'-0" DRIVE AISLE

- B. NEW DOG KENNEL AND RUN
 - 850 SF
 - 6 KENNELS
 - ADJACENT STORAGE / WASTE AREA

- C. EXISTING GARAGE / POTENTIAL LONGER TERM HOUSING
 - 480 SF TOTAL
 - 132 SF OF SLEEPING SPACE
 - 65 SF OF BATHROOM SPACE
 - 272 SF OF LIVING SPACE



BATHROOM AESTHETIC

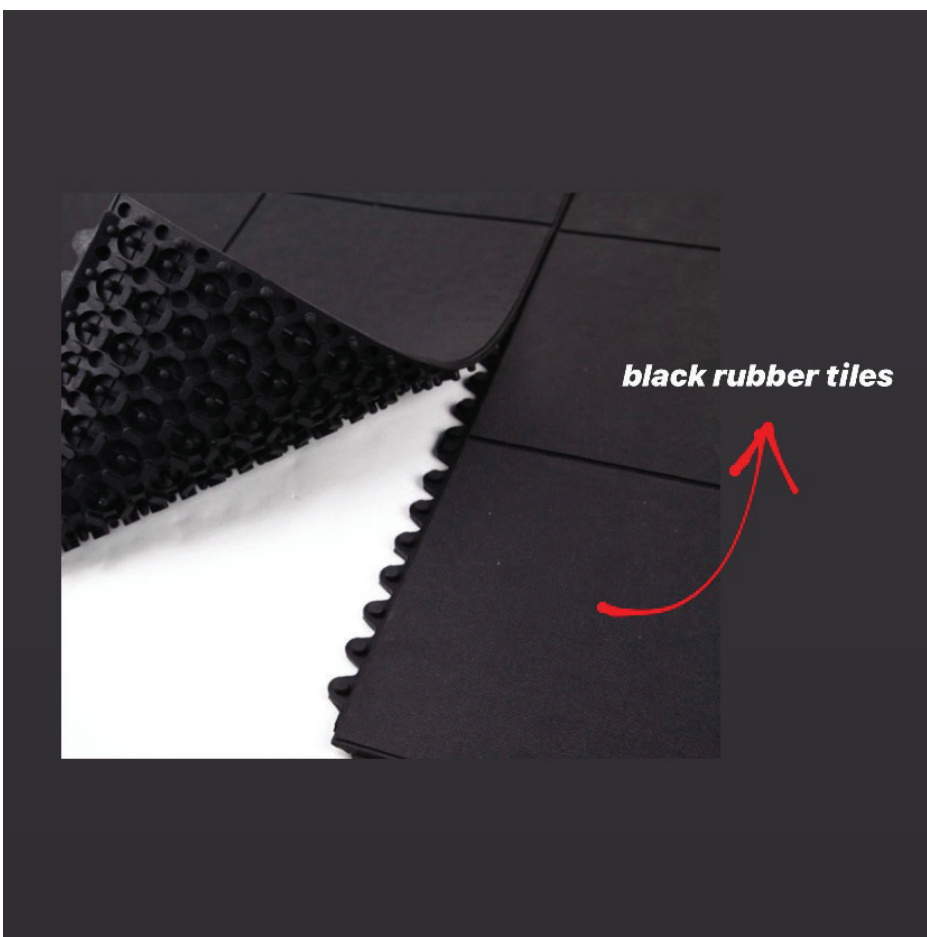
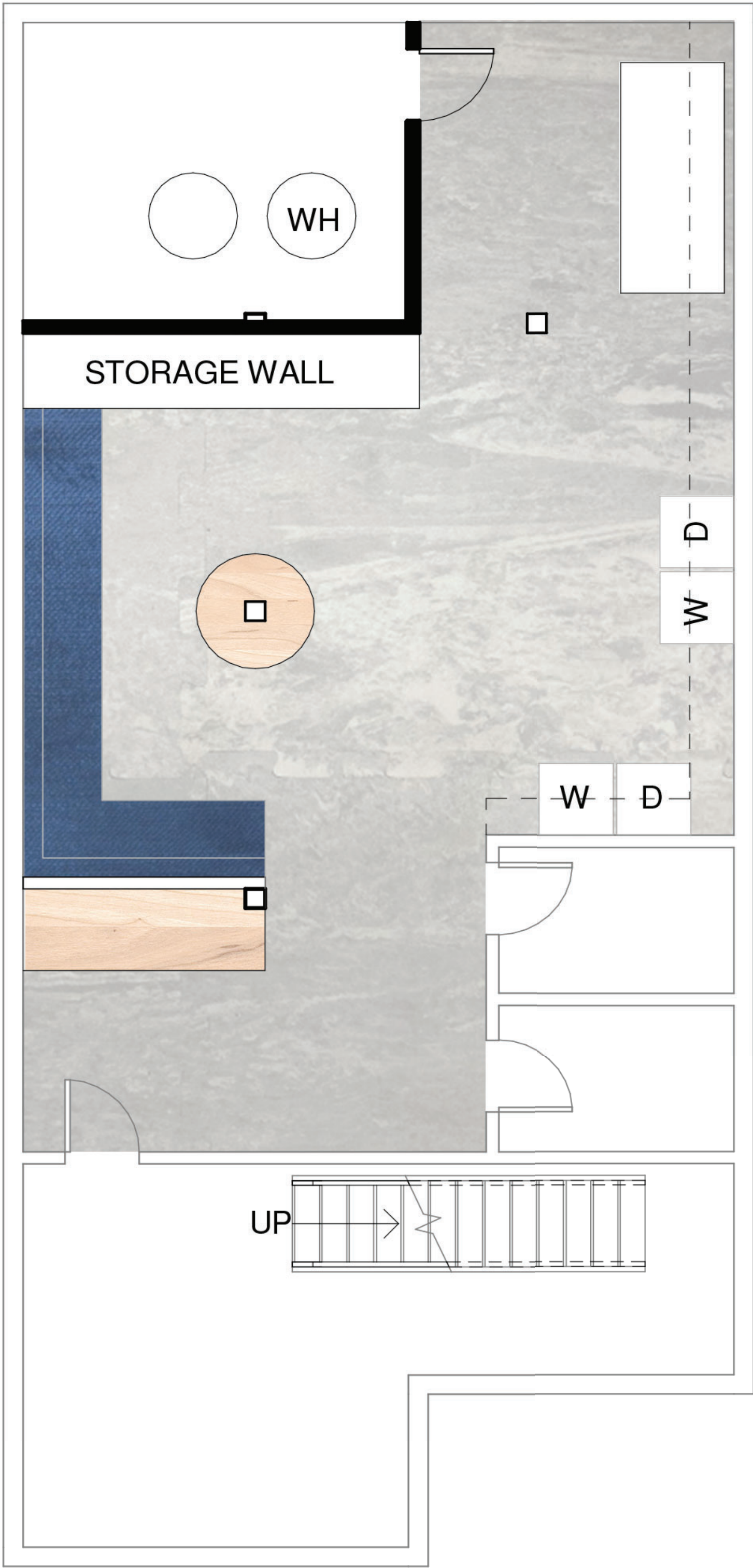
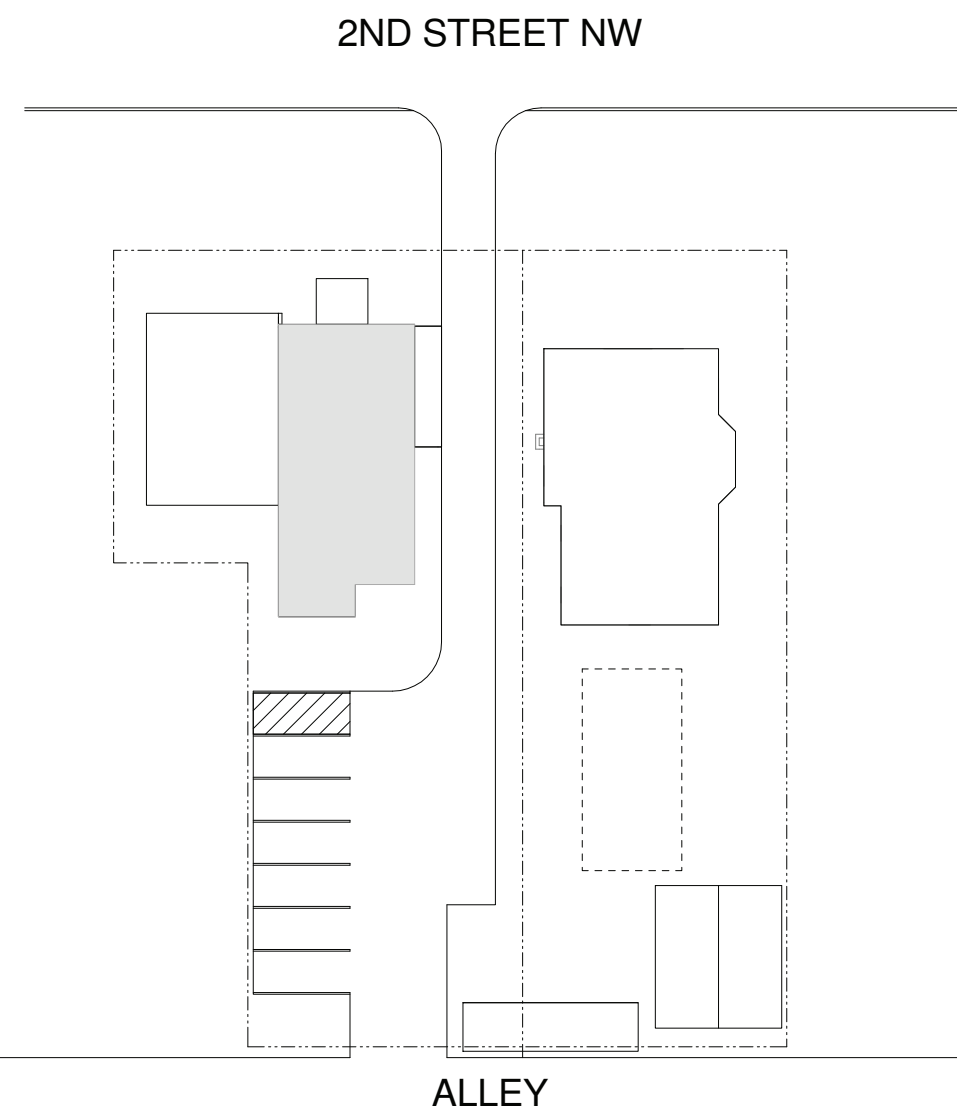


KITCHEN AESTHETIC



THE UNFINISHED BASEMENT DOESN'T FEEL VERY WELCOMING, MAKING OUR PRIMARY MISSION TO MAKE THAT SPACE FEEL COZY AND WELCOMING. WE SOUGHT TO MAKE THE ACT OF DOING LAUNDRY A MORE PEACEFUL AND COLLECTIVE EXPERIENCE. WE USED A HIGH TOP TABLE AND COMFORTABLE SEATING TO CREATE FLEXIBLE SPACES TO GATHER AND LOUNGE WHILE WAITING. WE INCLUDED FLEXIBLE TABLE SPACE FOR KIDS TO PLAY. WE MAINTAINED EXISTING STORAGE SPACES AND ADDED MULTI-USE SHELFING SYSTEMS TO INCREASE STORAGE CAPACITY

BASEMENT RENOVATION:
- 844 SF OF RENOVATED SPACE



FLOORING MATERIAL



FOCAL WALL WALLPAPER



HIGH-TOP AESTHETIC



FLOORING SAMPLE



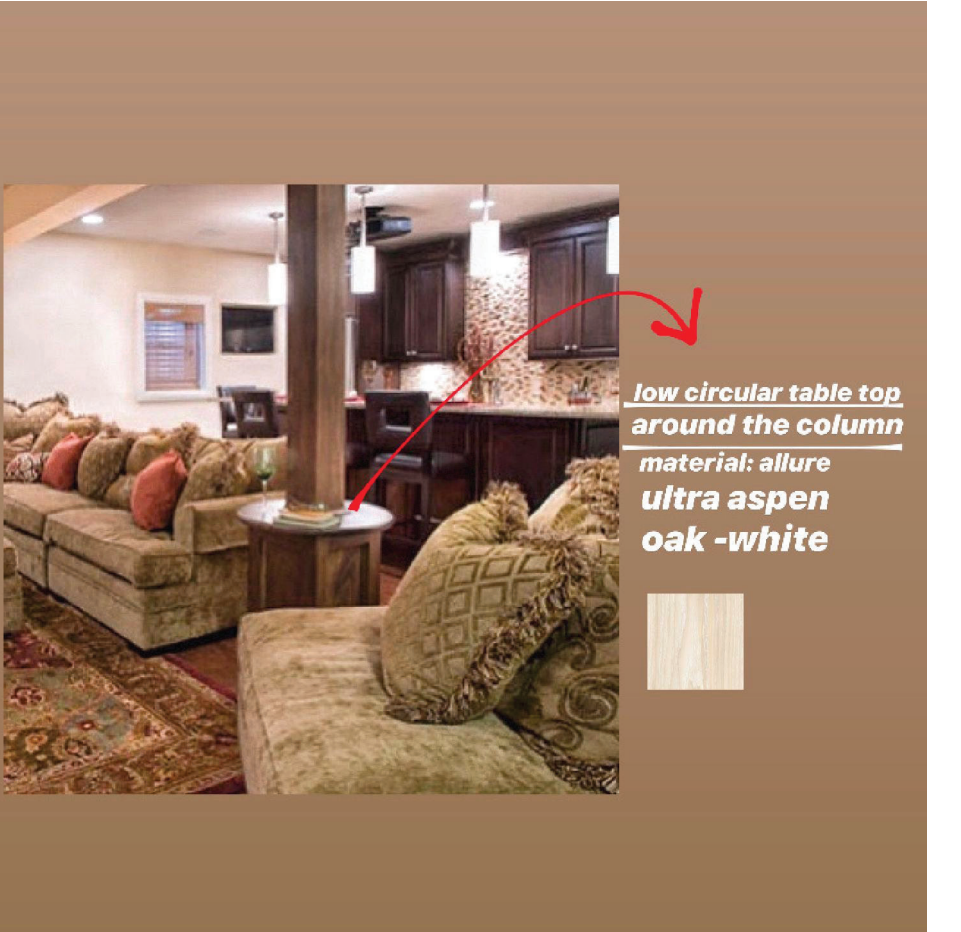
LAUNDRY STORAGE



LIGHTING EXAMPLE



LIGHTING AESTHETIC



CIRCULAR TABLE EXAMPLE

2020 SEARCH FOR SHELTER DESIGN CHARRETTE

Creating Affordable Design Solutions to Meet Minnesota's Housing Needs Since 1987

February 8, 2020
bit.ly/aiamnfs



AIA
Minnesota

HOUSING ADVOCACY COMMITTEE

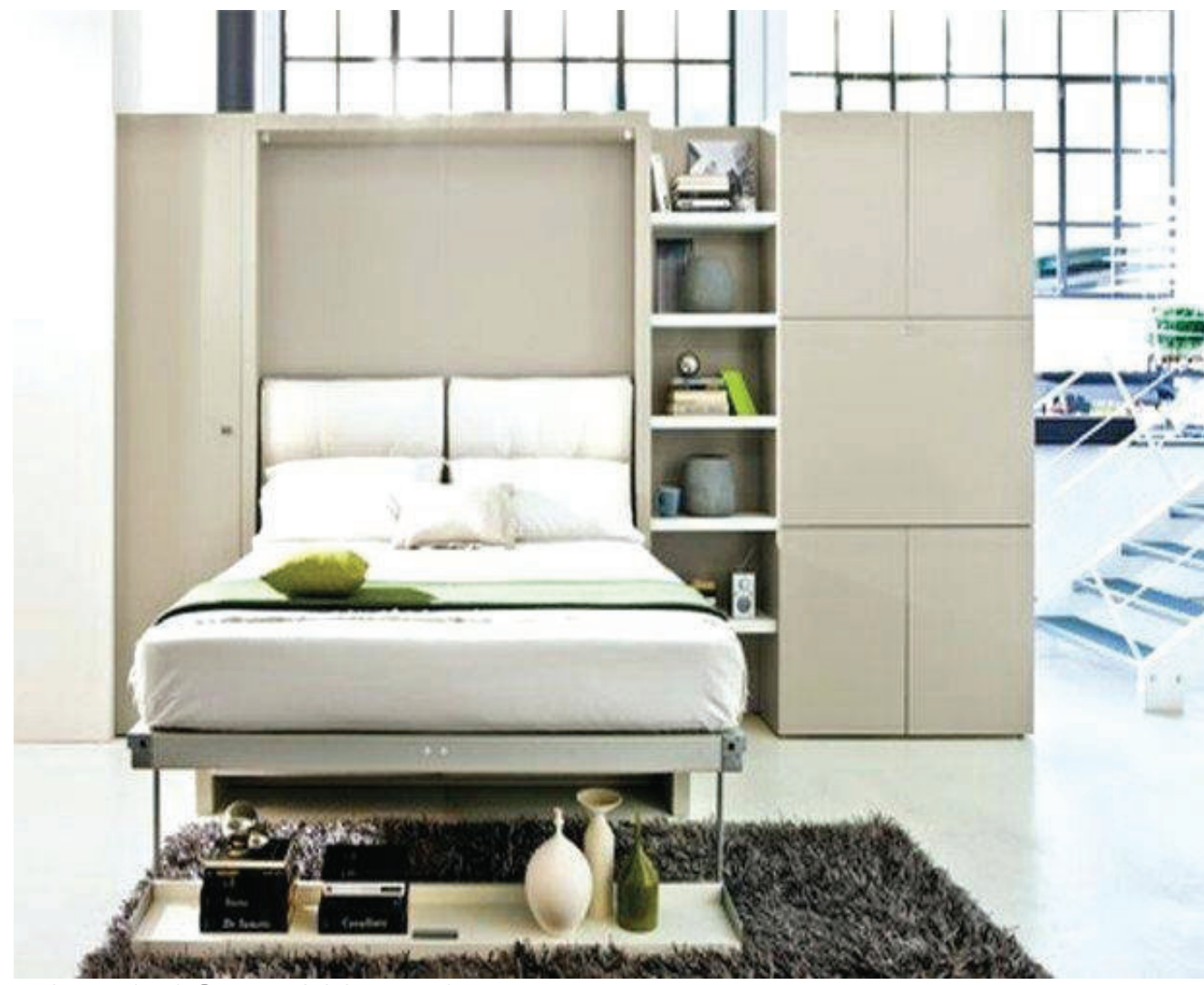
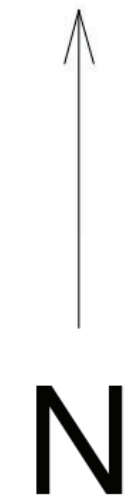
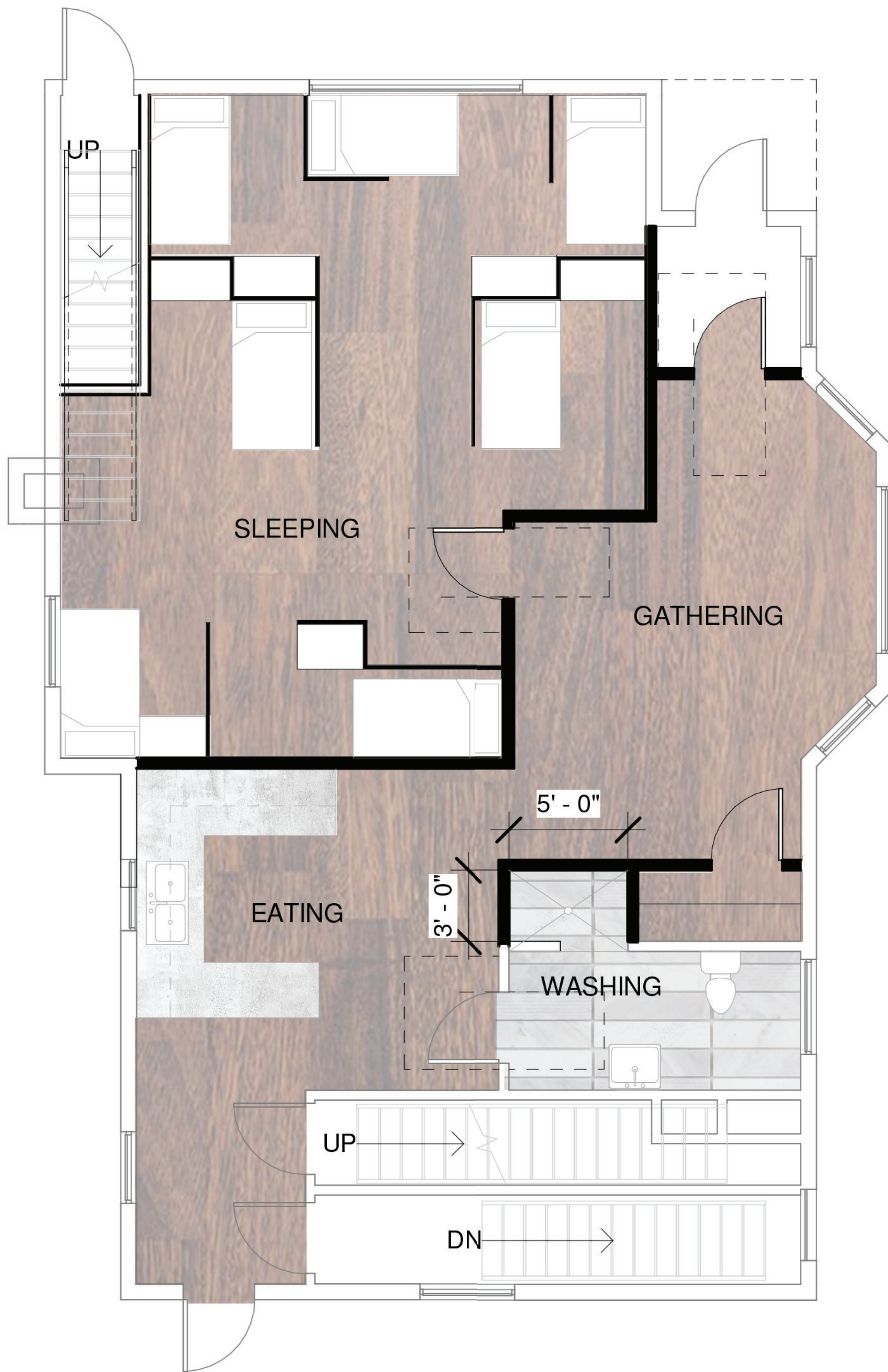
SEARCH FOR SHELTER
CELEBRATING

30
YRS



THE RENOVATION OF THE VISITATION AREA INTO MORE EMERGENCY SHELTER AREAS FOR SINGLE VICTIMS OF DOMESTIC ABUSE WITHOUT CHILDREN. THE CONFINED SPACE ENCOURAGED US TO DESIGN ONE OPEN ROOM, SUBDIVIDED BY PRIVACY PANELS AND STORAGE. WE WANTED TO ENCOURAGE COMPANIONSHIP AND TOGETHERNESS FOR THE RESIDENTS TO ALLEVIATE SOME OF THE TRAUMA OF THEIR SITUATIONS. WE DESIGNED THE REST OF THE SPACE TO BE COMFORTABLE AND INVITING - A SECOND HOME.

- FIRST FLOOR CONVERSION:
- ADDITION OF AN ADA ACCESSIBLE SHOWER STALL IN EXISTING BATHROOM
 - ADDITION OF COUNTER SPACE IN KITCHEN TO ENCOURAGE GATHERING
 - ADDITION OF 7 SINGLE BEDS
 - 566 SF OF BEDSPACE
 - 417 SF OF DINING AND LIVING
 - 81 SF FOR BATHROOM



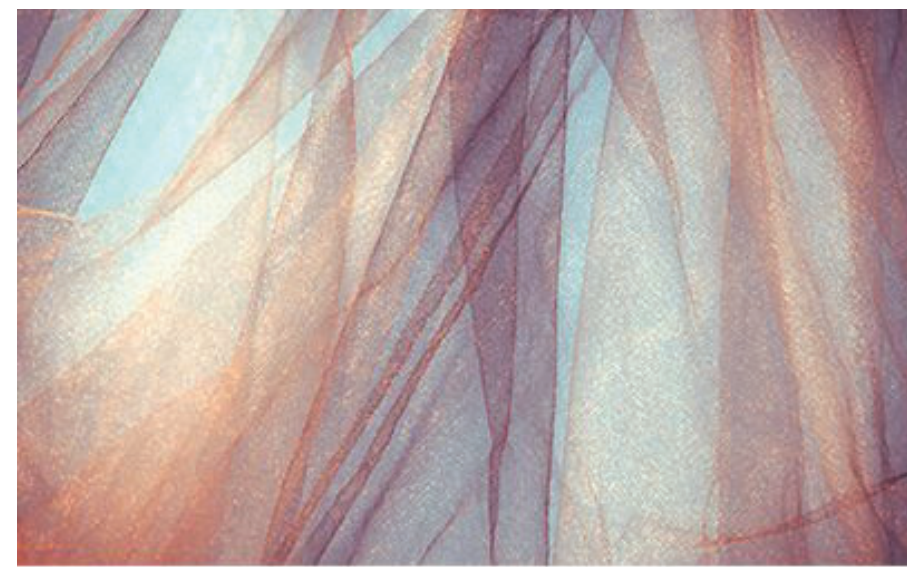
PARTITION EXAMPLE



KITCHEN AESTHETIC



FLOORING EXAMPLE



COLOR PALETTES



2020 SEARCH FOR SHELTER DESIGN CHARRETTE

Creating Affordable Design Solutions to Meet Minnesota's Housing Needs Since 1987

February 8, 2020
bit.ly/aiaamnsfs



AIA
 Minnesota

HOUSING ADVOCACY COMMITTEE

SEARCH FOR SHELTER
 CELEBRATING

30
 YRS