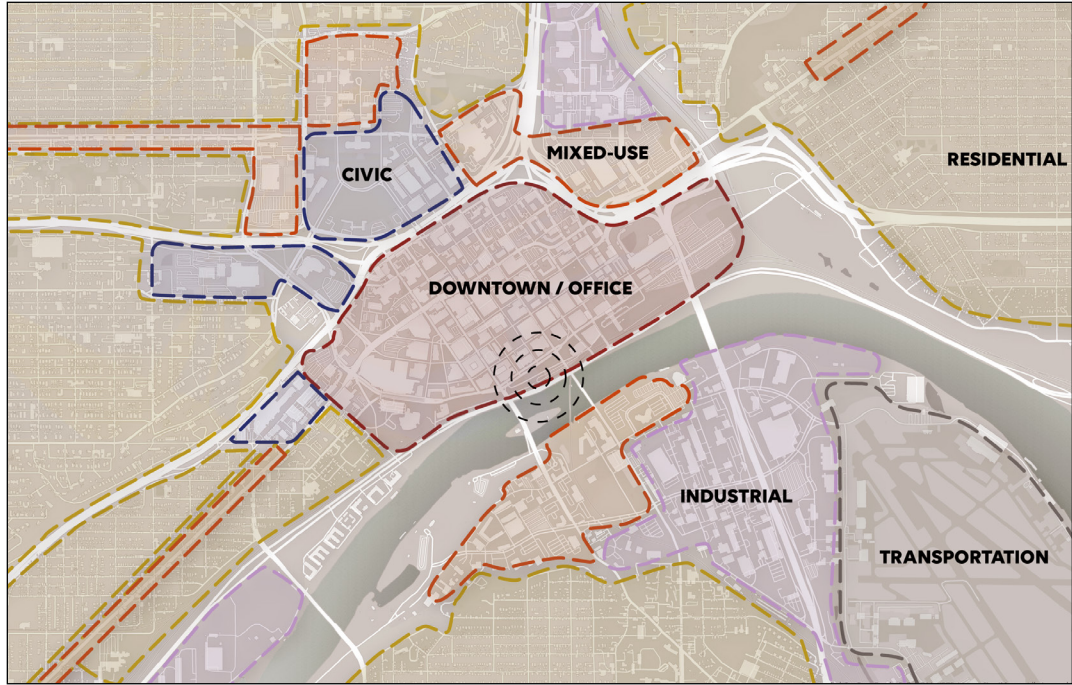


UNBOUND

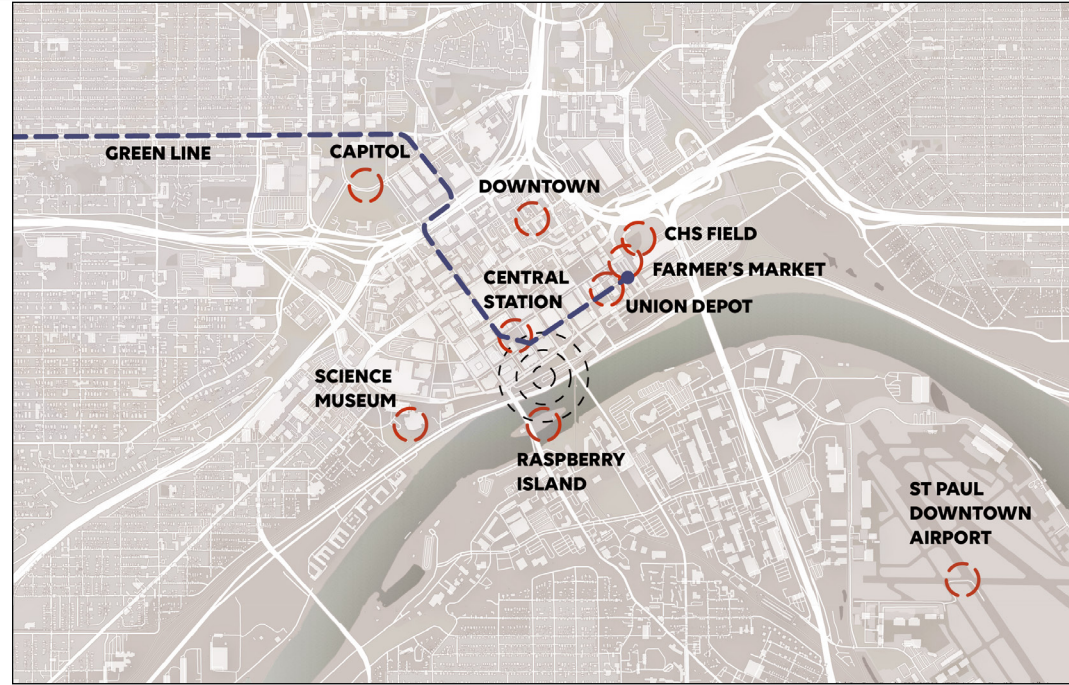
The core of Saint Paul - its downtown and riverfront, has lost its people. Even on weekends, the streets remain quiet and the river lies forgotten behind rail tracks, roads, and industrial blocks. Further, the separation of land uses has created a downtown that lives only during office hours, while the riverfront, despite its potential, stays disconnected and devoid of life.

UNBOUND reimagines this condition by dissolving the boundaries that isolate people from the river and from each other. The proposal submerges existing rail and road infrastructure underground, reclaiming the surface as a continuous public landscape rich with recreation, ecology, and social interaction. At the same time, it transforms the surrounding single-use zones into a transit-oriented, mixed-use fabric, introducing residential, cultural, and commercial layers that keep the area active beyond working hours.

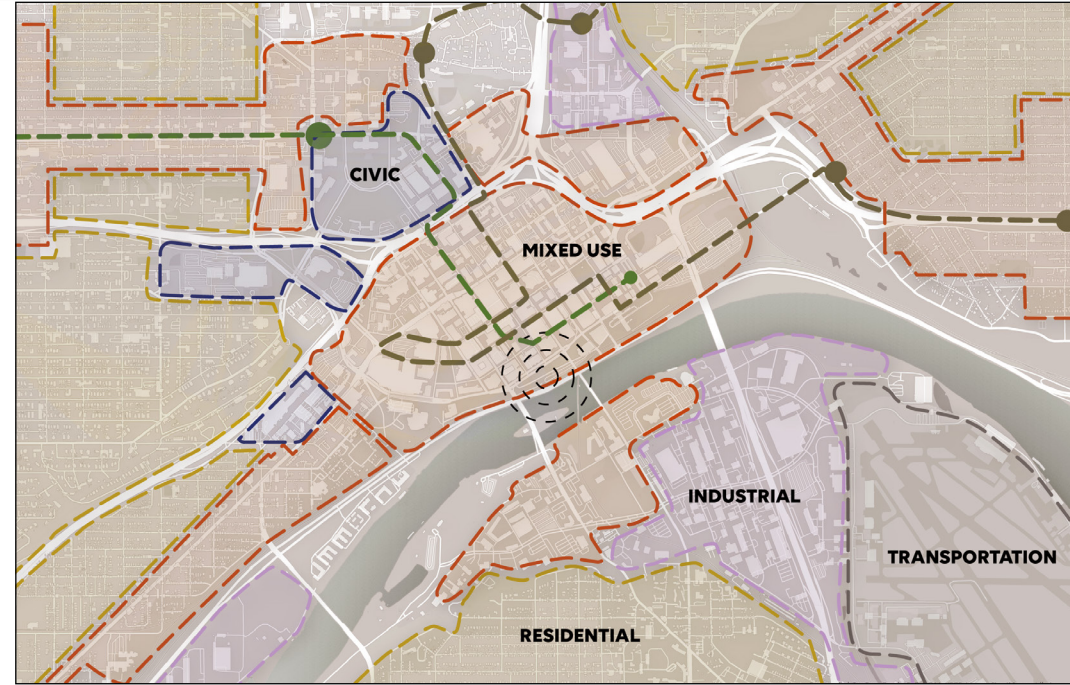
The coexistence of a vibrant mixed-use core and an experiential riverfront creates a self-sustaining urban ecosystem making Saint Paul a city that finally lives by its river. UNBOUND is about creating a seamless, human-centered connection between the city and the water — alive, accessible, and unbound.



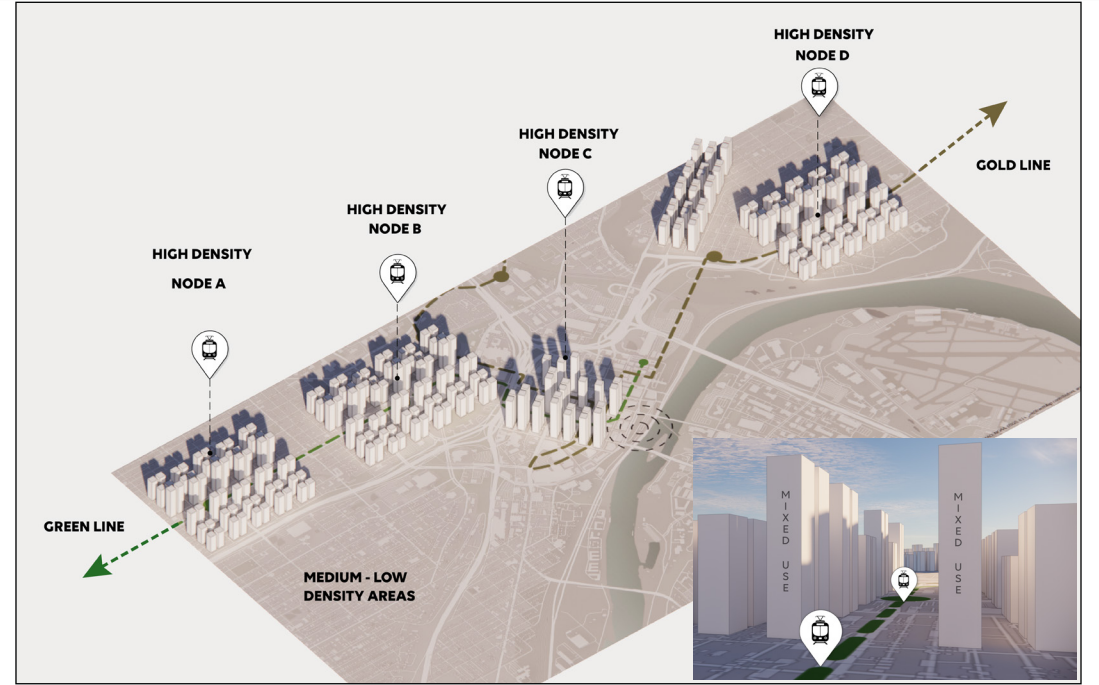
EXISTING (2040) ISOLATED LANDUSES AROUND THE SITE



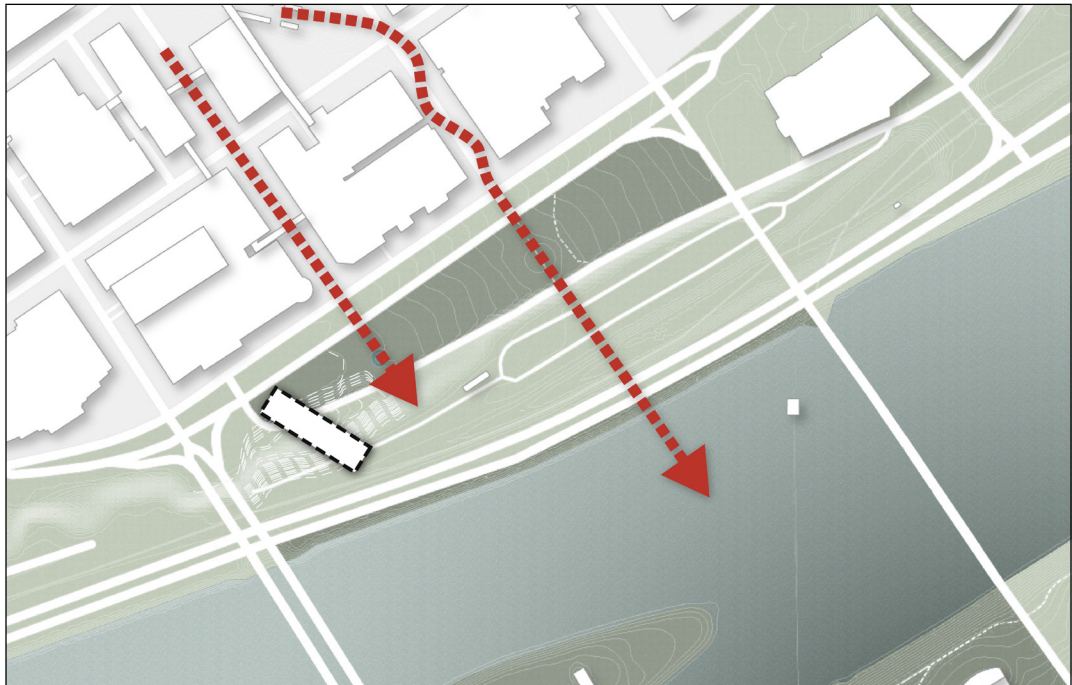
CONNECTIVITY AND LANDMARKS



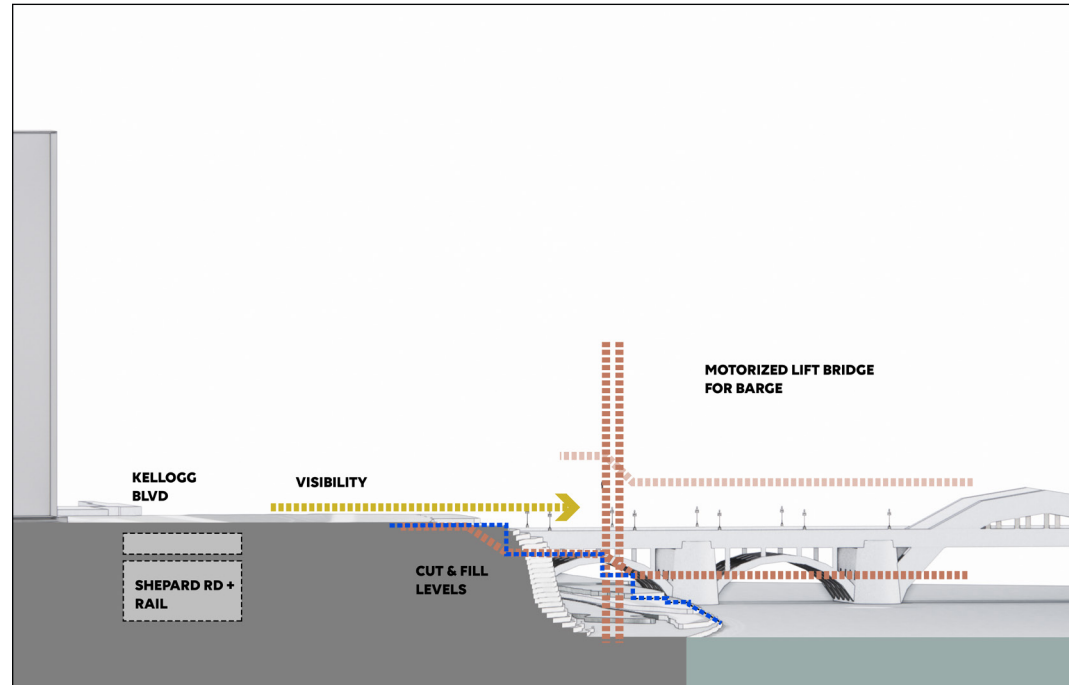
PROPOSED LANDUSE: INCREASING USE OVERLAP



PROPOSED: INCREASING DENSITY ALONG THE TRANSIT CORRIDOR



EXTENDING STREET GRID (BRIDGES) AND RESPONDING TO THE BLUFF ON SITE THROUGH CANTILEVER INFRASTRUCTURE



AVOIDING OBSTRUCTIONS TO RIVER VIEW WHILE MANAGING STEEP SLOPES WITH CUT AND FILL

Catalyst for Redevelopment: The project transforms an underused riverfront into a vibrant destination with year-round programs including markets, dining, culture, and recreation spaces sparking economic activity and community life.

Cultural Institution Anchor: An Art Exhibition Center, performance pavilion, and cultural plazas create a recognizable civic landmark that celebrates local arts and brings people together.

Connection to River: Sunken spaces preserve river views while docks, trails, and a hanging bridge offer direct physical and experiential access to the Mississippi.

Premier Park on the Mississippi: A rich landscape of trails, play areas, water features, dining spaces, and elevated paths establishes the site as a signature public park along the river.

Housing: TOD design framework strengthens walkability, amenities, and food access, supporting the future integration of diverse and attainable housing options.

Addressing Food Desert: A greenhouse, farmer's market, and food plaza improve access to fresh, healthy food while supporting local vendors and community well-being.

Integration with Downtown: Extending the street grid and maintaining clear view corridors seamlessly connects downtown to the riverfront as a natural continuation of the urban fabric.

Safe Pedestrian Connections with Downtown: Minnesota Street becomes a pedestrian-first corridor, supported by pop-up infrastructure that create safe, intuitive, and accessible routes to the site.

The proposal includes the demolition of the existing 2nd Street and the rail lift bridge, as transit has been rerouted in the new design.

Accessibility: Ramps, elevators, and gently sloped paths ensure all areas are fully inclusive for users of all abilities.

Equity: Open, free public spaces catering to different age groups, and access to culture, recreation, mobility, and fresh food ensure the riverfront benefits people from all backgrounds.

400000 SQ.FT.

SITE AREA

100 FT

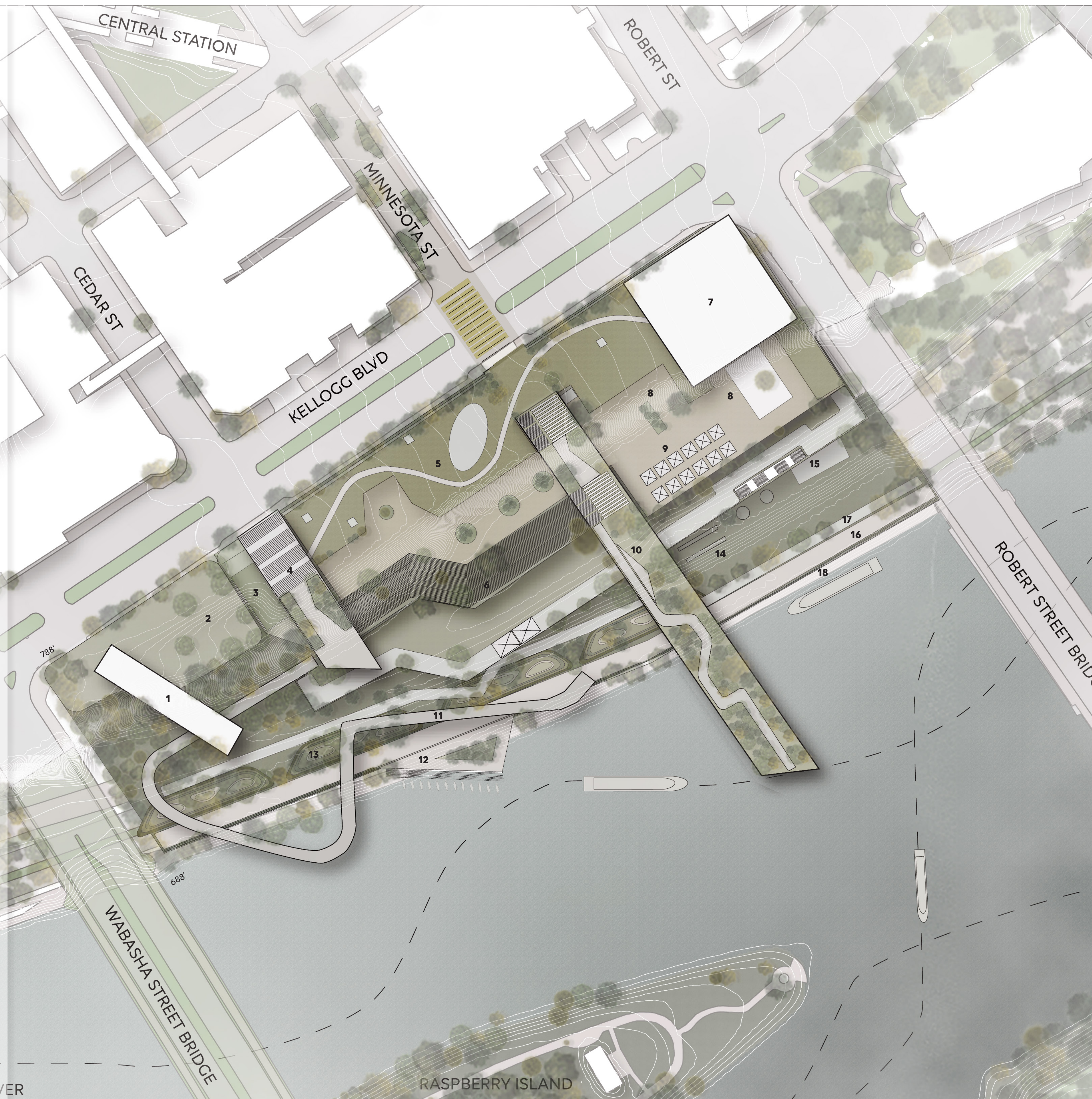
ELEVATION DIFFERENCE



NOT TO SCALE

LEGEND

1. HANGING RESTAURANT
2. OUTDOOR EATING SPACE WITH FOOD TRUCK PLACEMENT
3. RAMP AND ELEVATORS
4. SMALLER PEDESTRIAN BRIDGE
5. ART EXHIBITION CENTER
6. AMPHITHEATRE WITH PAVILLION
7. GREEN HOUSE
8. FOOD PLAZA
9. MULTIFUNCTIONAL MARKET
10. CENTRAL PEDESTRIAN BRIDGE
11. PEDESTRIAN MEANDERING ELEVATED TRAIL
12. KAYAK DOCK
13. MOUNDS
14. CHILDREN'S PLAY AREA
15. WATER FEATURE
16. TRAILS
17. BIKE LANE
18. CRUISE DOCK

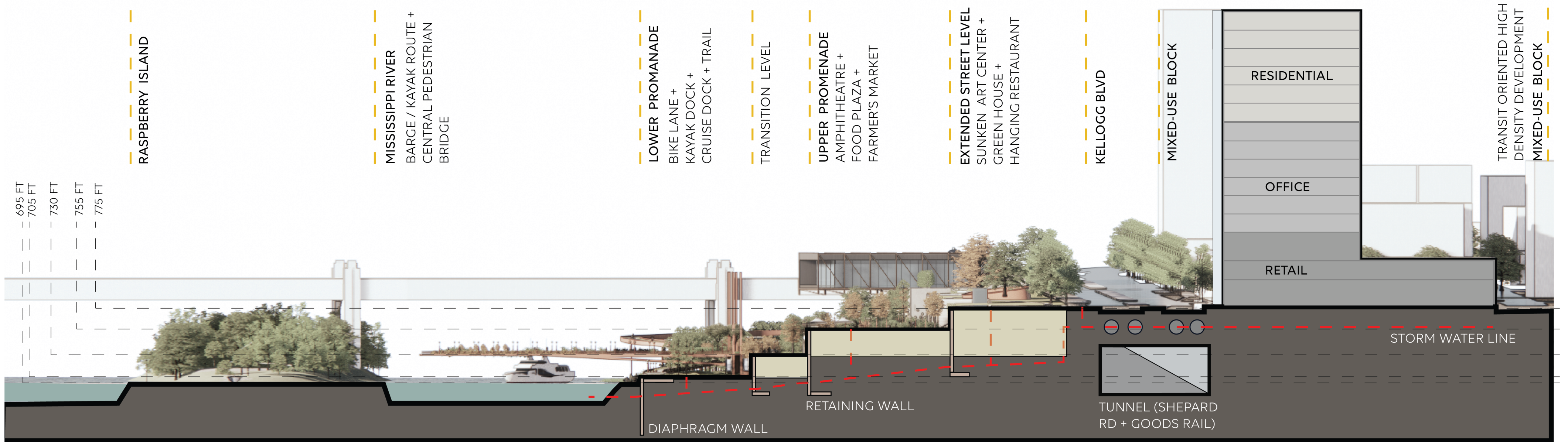


MISSISSIPPI RIVER

RASPBERRY ISLAND



SITE SECTION - NTS



UNBOUND

