



# RESTITCHING ST. PAUL

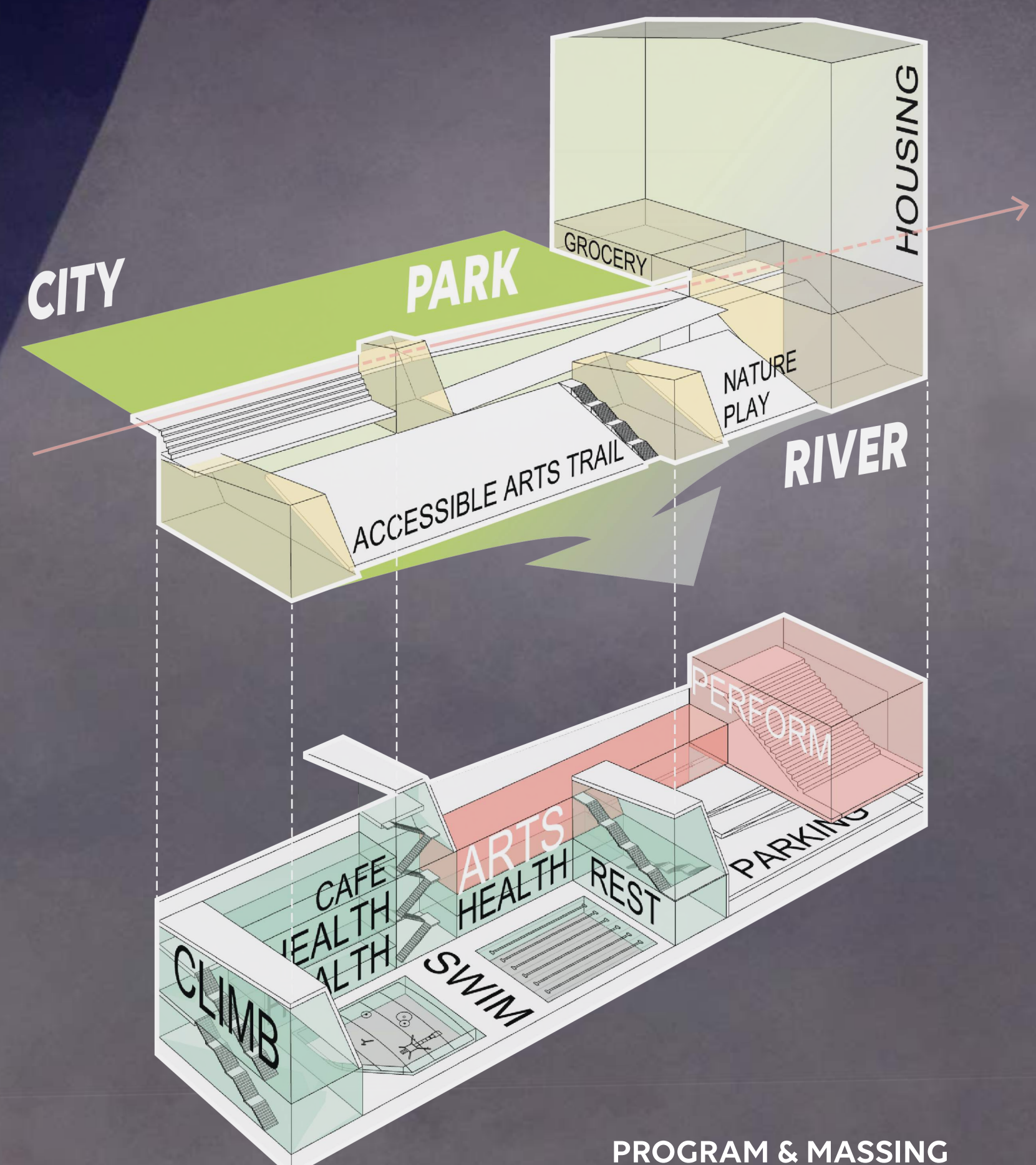
## INTRODUCTION

Restitching St. Paul proposes an integrated urban, landscape, and architectural strategy that reconnects the downtown St. Paul to the Mississippi River. Anchored by a new multi-purpose building for living, commerce, recreation, and community gathering, the project draws its formal and material inspiration from the neighboring sandstone and limestone bluff. An accessible roofscape path extends from a reimagined Kellogg Park down to the riverfront, culminating in a new pedestrian bridge. **This continuous public promenade transforms the building's roof into a civic landscape, offering views, circulation, and year-round activation.**

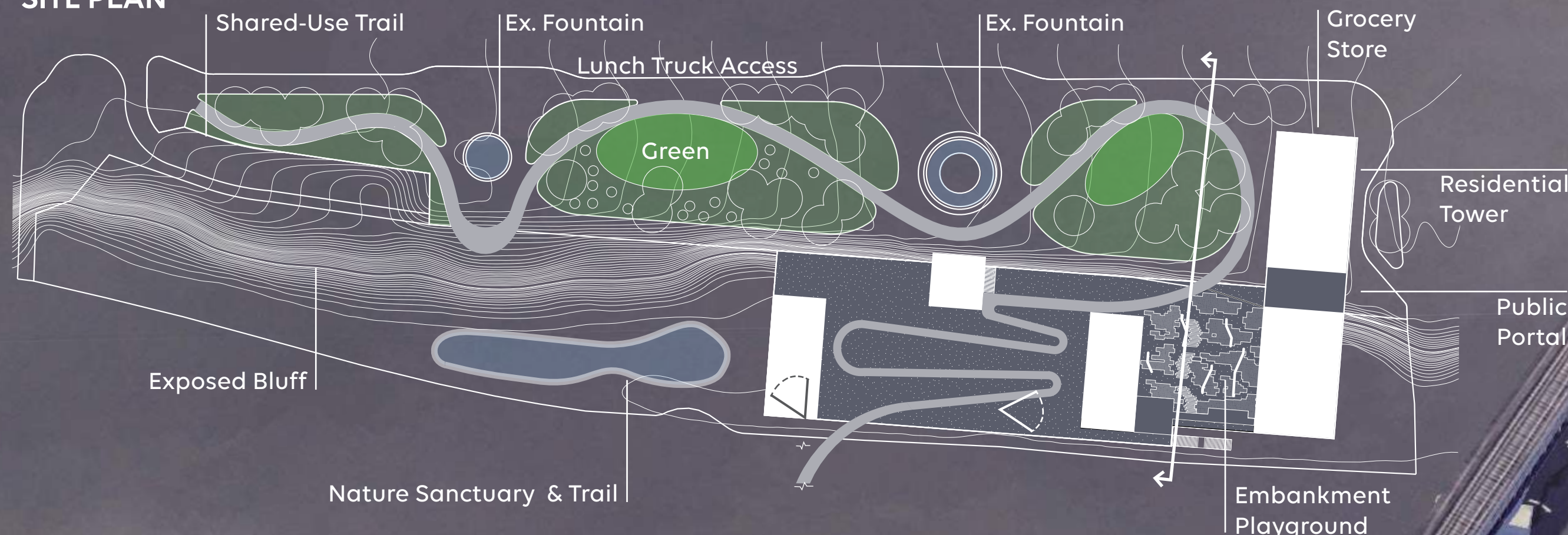
Three luminous pavilions — clad in limestone on the west and lined with translucent glass fins on the east — serve as river-

front beacons. These structures bring daylight deep into the recreation center while marking the riverfront with a distinctive architectural identity. A 15-story mixed-use housing tower anchors the west end of the site, contributing much-needed residential supply to St. Paul and financing for this project. The ground level accommodates a grocery store, addressing downtown's longstanding food-desert conditions.

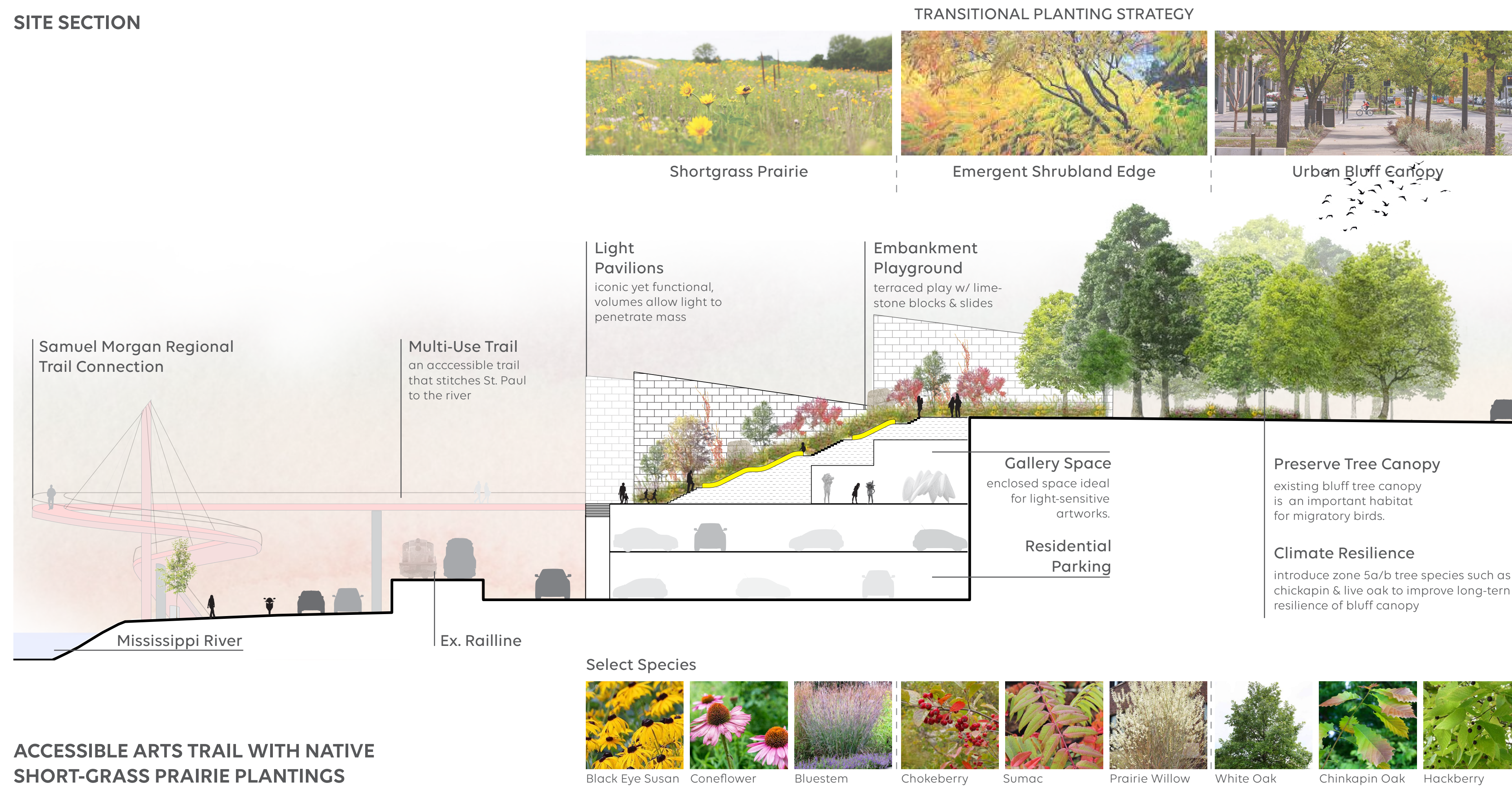
The roofscape is planted with native short-grass prairie species and featured terraced nature play area that celebrate the region's ecological character and provides a family-oriented amenity. By stitching together park, bluff, building, and water, the proposal creates a renewed riverfront experience—one that forges a stronger, more accessible connection between St. Paul and the Mississippi River.



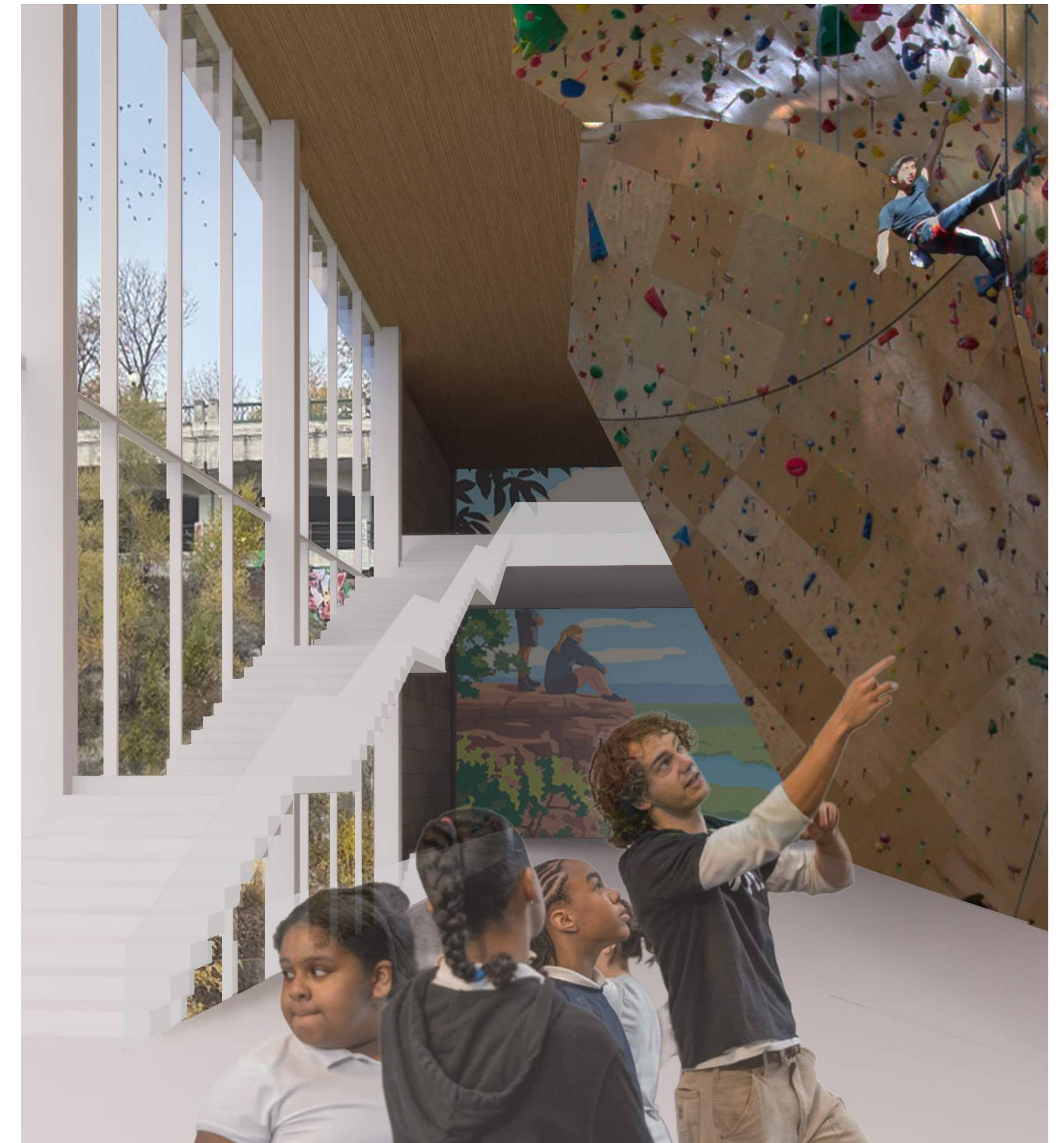
## SITE PLAN



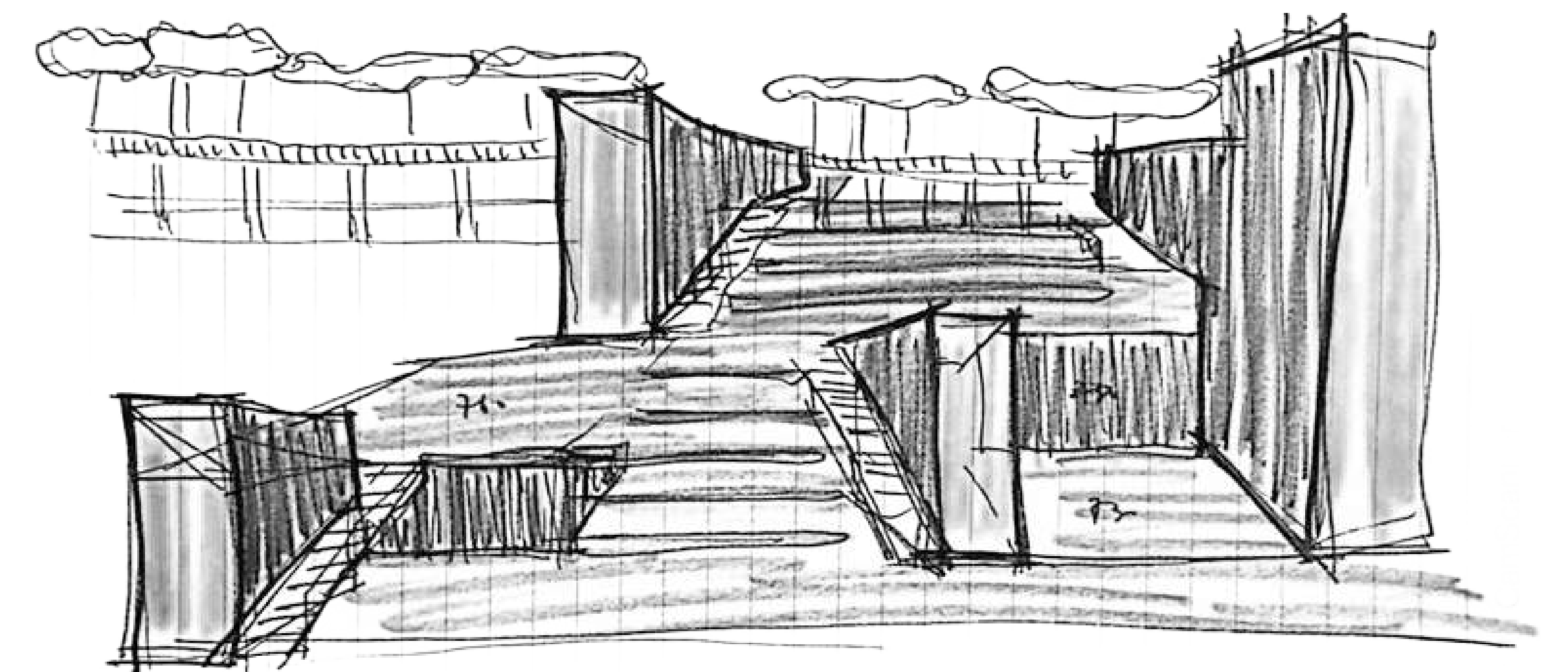
**SITE SECTION**



**ACCESSIBLE ARTS TRAIL WITH NATIVE SHORT-GRASS PRAIRIE PLANTINGS**



**INDOOR CLIMBING AREA OFFERS VIEWS TO BLUFF AND RIVER**



**CONCEPTUAL SKETCH OF LIGHT PAVILIONS EMERGING FROM LANDFORM**