

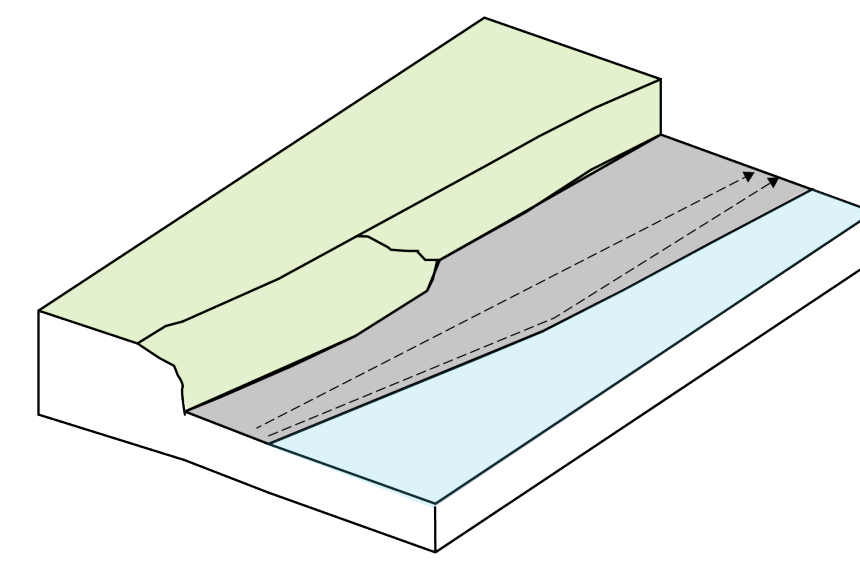
RIVER TAPESTRY

River Tapestry reimagines Saint Paul's riverfront as an inviting, cross-cultural third space reconnecting people to the Mississippi River and one another. Once separated by train tracks and Shepard Road, the site now opens through a lowered, covered underpass, creating room for community life, cultural expression, and everyday joy.

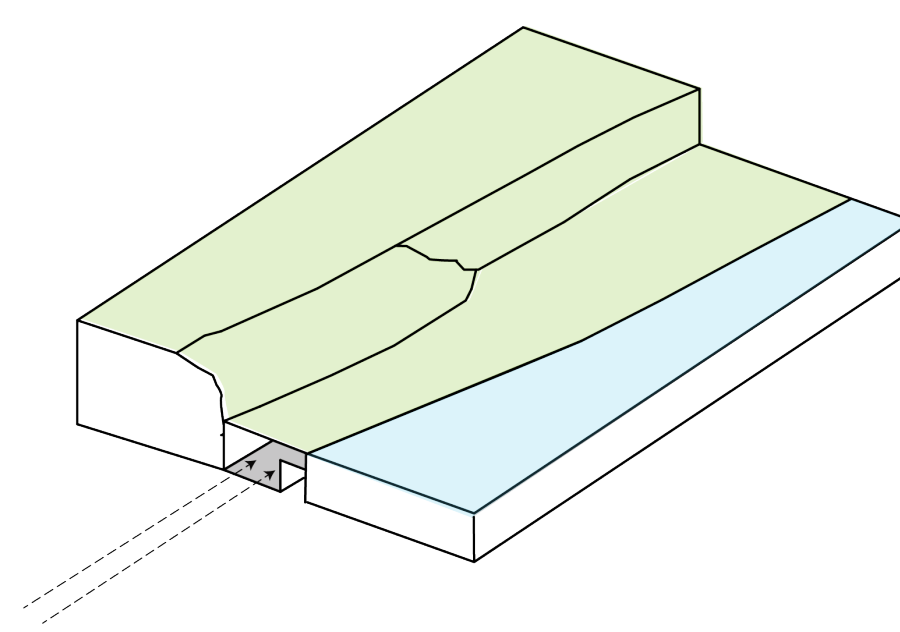
Rooted in acknowledgment of Dakota history and land, this project celebrates culture, art, and gathering. Colorful textile-inspired walkways wind through mosaics by local artists, echoing quilting, beadwork, and woven designs from Saint Paul's diverse communities. A central promenade serves as a living cultural archive for shared narratives. At its heart stands a cultural building with art galleries, a bookstore, and exhibition spaces. Extensive windows frame river views, while flexible interiors accommodate workshops, performances, and community meetings. The building also houses a Drop-In Center that provides essential services: a food bank, family rooms, showers, laundry facilities, computer stations, and employment and housing resources, with social workers maintaining regular hours.

The landscape unfolds in terraced layers stepping down to the water's edge, where native plantings provide seasonal beauty and ecological restoration. Community garden plots allow residents to grow vegetables and flowers, fostering connections to the land. Dedicated food truck areas support small businesses while offering visitors a variety of culinary options. Open lawns host yoga, cultural celebrations, and kite flying, while Second Street shops accommodate farmers' markets, craft fairs, and pop-up events with covered vendor stalls. An outdoor seating area provides space for performances and forums, its stage framed by river views.

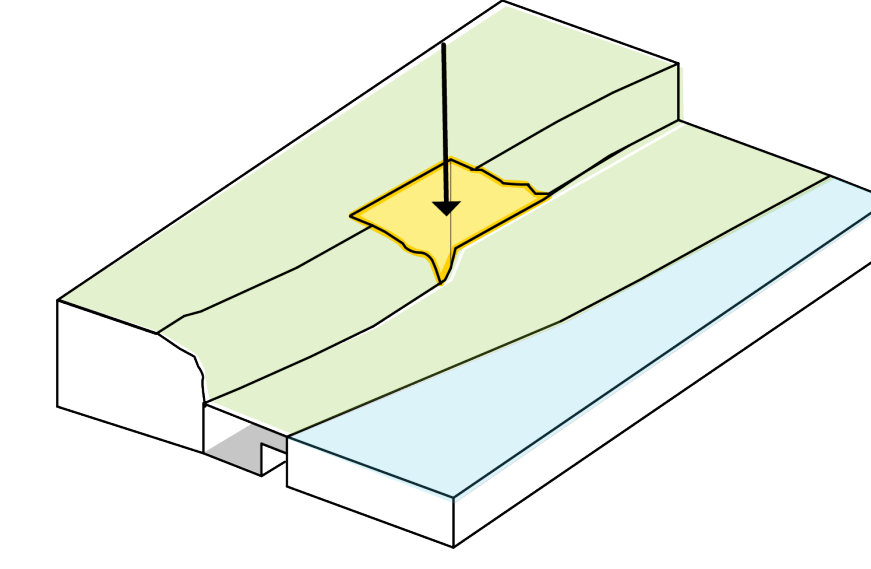
Pedestrian pathways weave through the site and extend into surrounding neighborhoods, ensuring accessibility for all ages and abilities and allowing visitors to arrive with purpose or simply wander. River Tapestry becomes a vibrant convergence point where heritage, community, and nature meet, a place designed for daily life where neighbors become friends and stories cross generations and cultures. Here, the water that has sustained life for millennia continues as a gathering place, a teacher, and a source of belonging for everyone who comes to its shores.



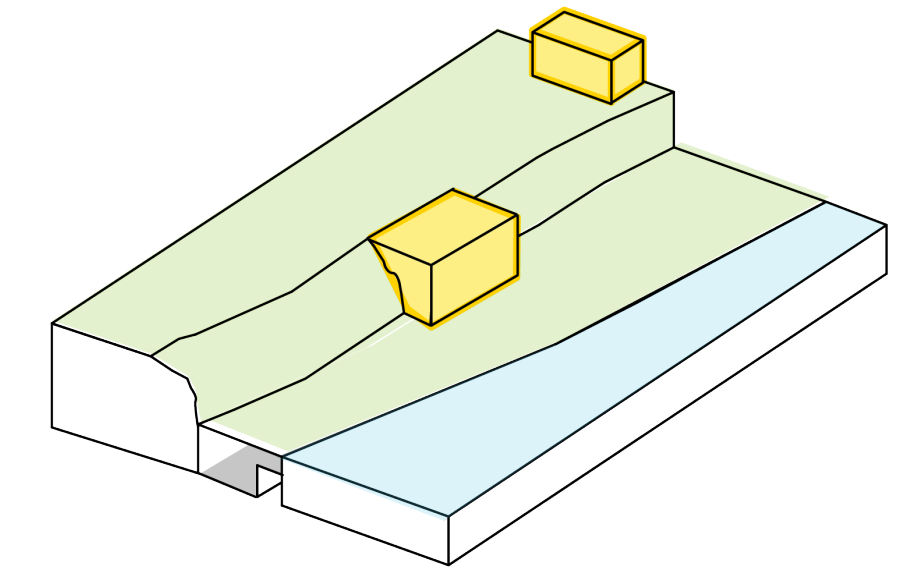
Existing Site



BNSF Train & Shepard Road Underpass



Building Into Bluff



Community Centers

Site Plan

- 1 - Cultural Center
- 2 - Drop-in Center
- 3 - Rollerblade/ Ice Rink
- 4 - Sport Courts
- 5 - Outdoor Event Space
- 6 - Community Garden
- 7 - Food Truck/ Vendor Drop Off



Food Trucks



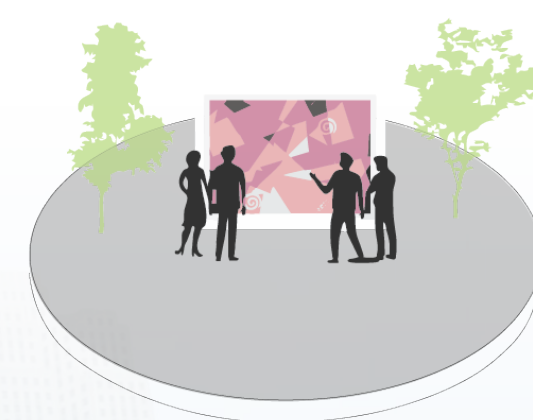
Groceries



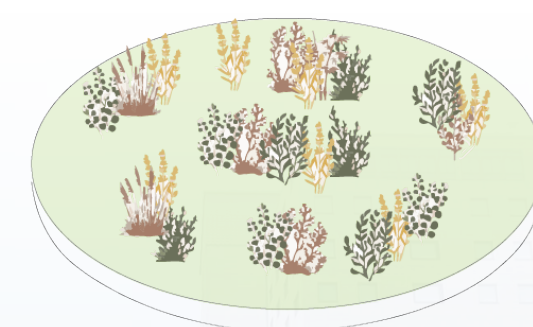
Gardening



Relaxation



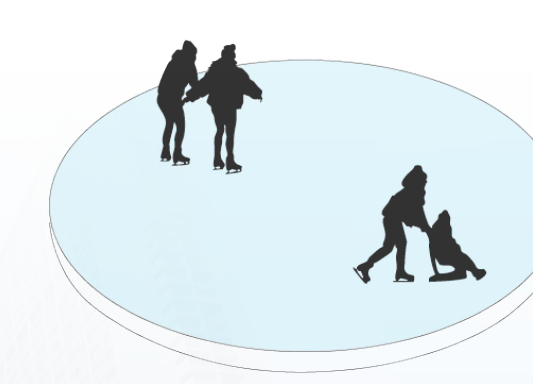
Art



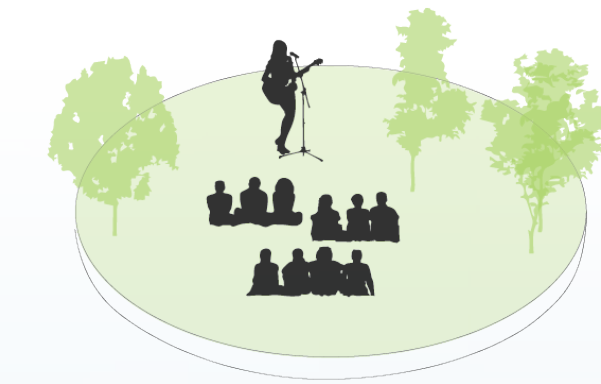
Vegetation



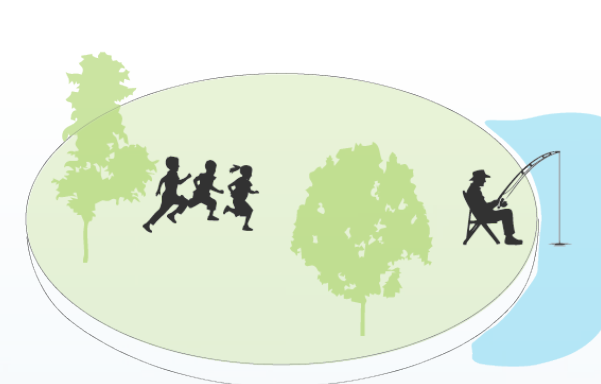
Yoga



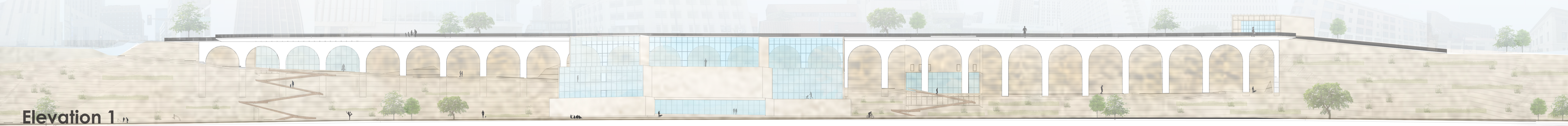
Ice Skating



Music



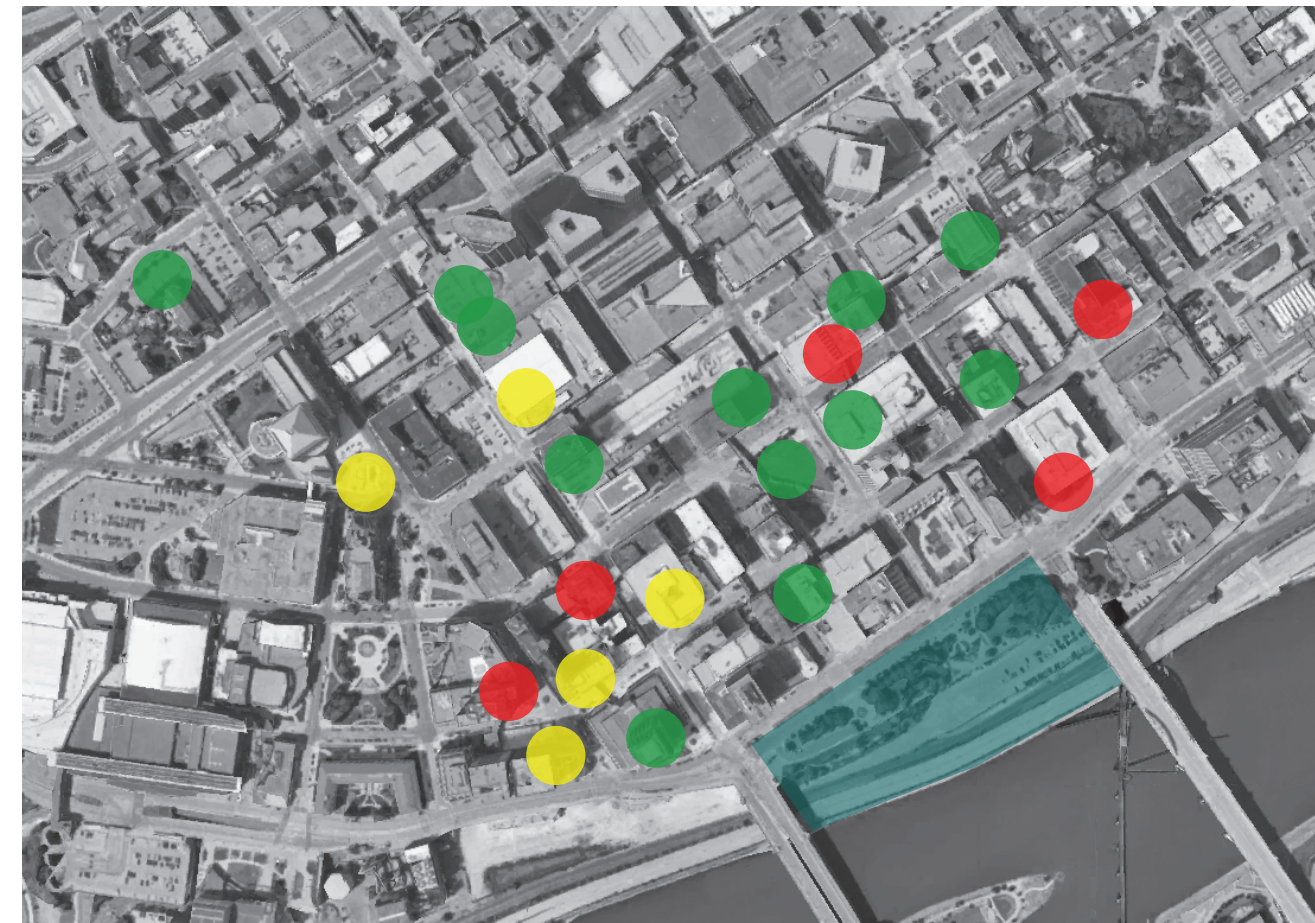
Fishing



Housing Compatibility Assessment

This data created by Gensler was used by St. Paul Downtown Alliance to identify current buildings that could be transformed to housing in the area.

In this project this data is used to highlight the city's dedication to an anticipated growth in residents and how the proposed amenities will support the quality of life for the community.



● 100 - 80 % ● 79 - 70 % ● 69 - 0 %

Native Bluff Vegetation



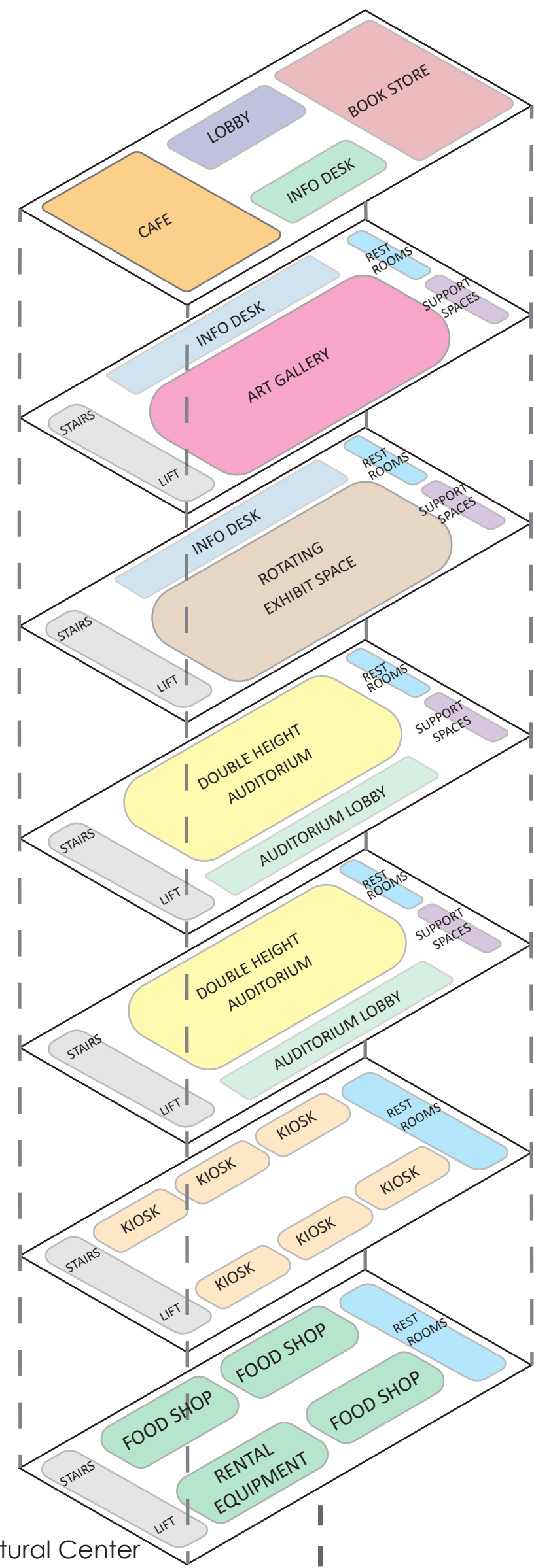
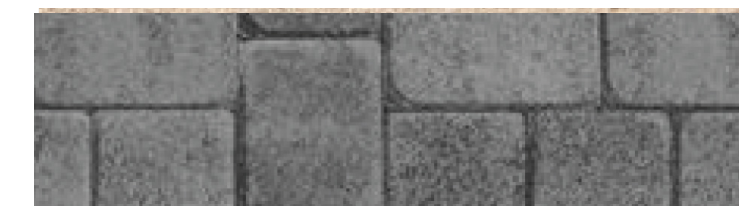
Community Art Murals



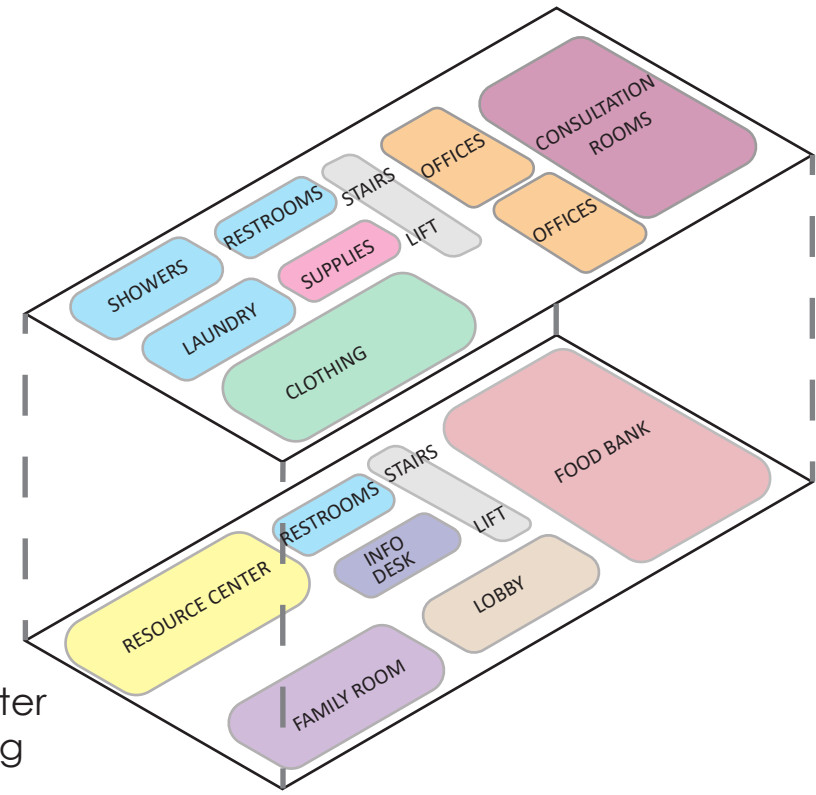
Sandstone



Permeable Pavement



Cultural Center Programming



Drop-in Center Programming



Kellogg Mall Park Overlooking River Tapestry



2nd Street Shops



Ice Skating Rink & Cultural Center



Concept Diagram

