

HISTORICAL BACKGROUND & EXISTING CONDITIONS

DESCRIPTION OF PROJECT

The Eagle Bend High school was built under a Workers Progress Administration (WPA) project and completed construction in 1942. The historical significance in the city of less than 600 people is that the building stands over the city like a sentry protecting its territory. The building has Terrazzo hallways, open stairways and 3 foot walls in some parts of the building. The three-level structure is mostly constructed from cement, which was wheelbarrowed up ramps to get to the upper level, trimmed by granite from central Minnesota quarries.

A large 400 seat auditorium and gymnasium was built 10 years later in 1952 and is known for its acoustically friendly design. The building has many stairs which attribute to significant accessibility challenges. "Carol Becker, a local historian, attended the Eagle Bend School from 1945 to 1958 and recalled that because there was no elevator, two boys from the football team would pick up a young lady who was confined to a wheelchair and take her to where she needed to go when she had to navigate the stairs." (Source: LivingTheNewDeal.org)

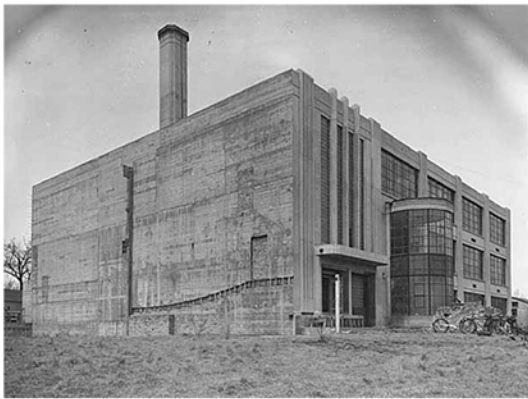
Also on the site stands the Hilltop Regional Kitchen, who delivers frozen meals all over the state of Minnesota to low-income individuals as well as elderly and people with disabilities.

Eagle Bend, MN is a small 600 person community and lacks any exercise facilities and has a need for senior housing as well as community spaces.

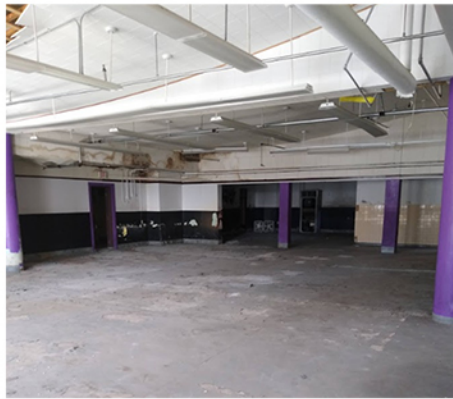
The school portion of the building was studied in the 2020 AIA MN Search for Shelter Charrette and looked at providing 24 senior housing units



School building in 2020



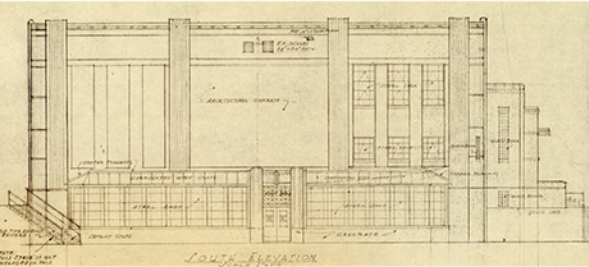
School building in 1942



Ground floor looking into current multi-purpose space



1st floor looking from the stage into the seating



Original South elevation



School building in 1952



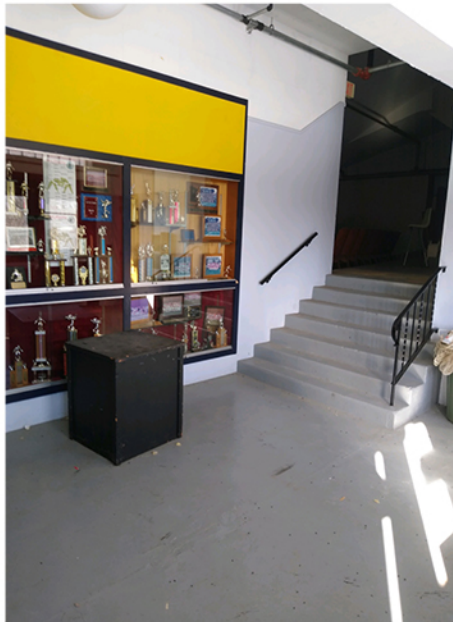
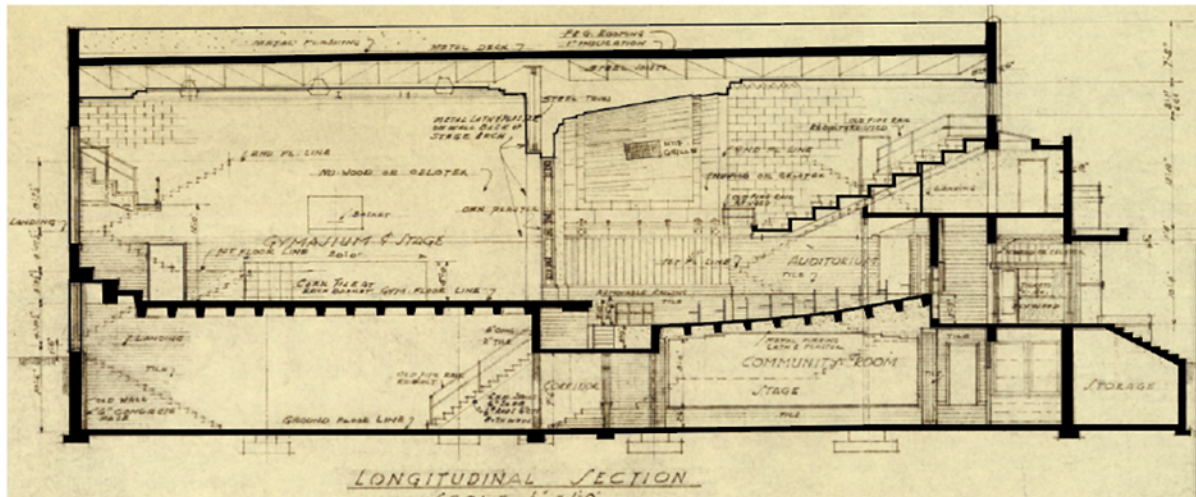
Gym looking from front corner of the stage to the back corner of gym



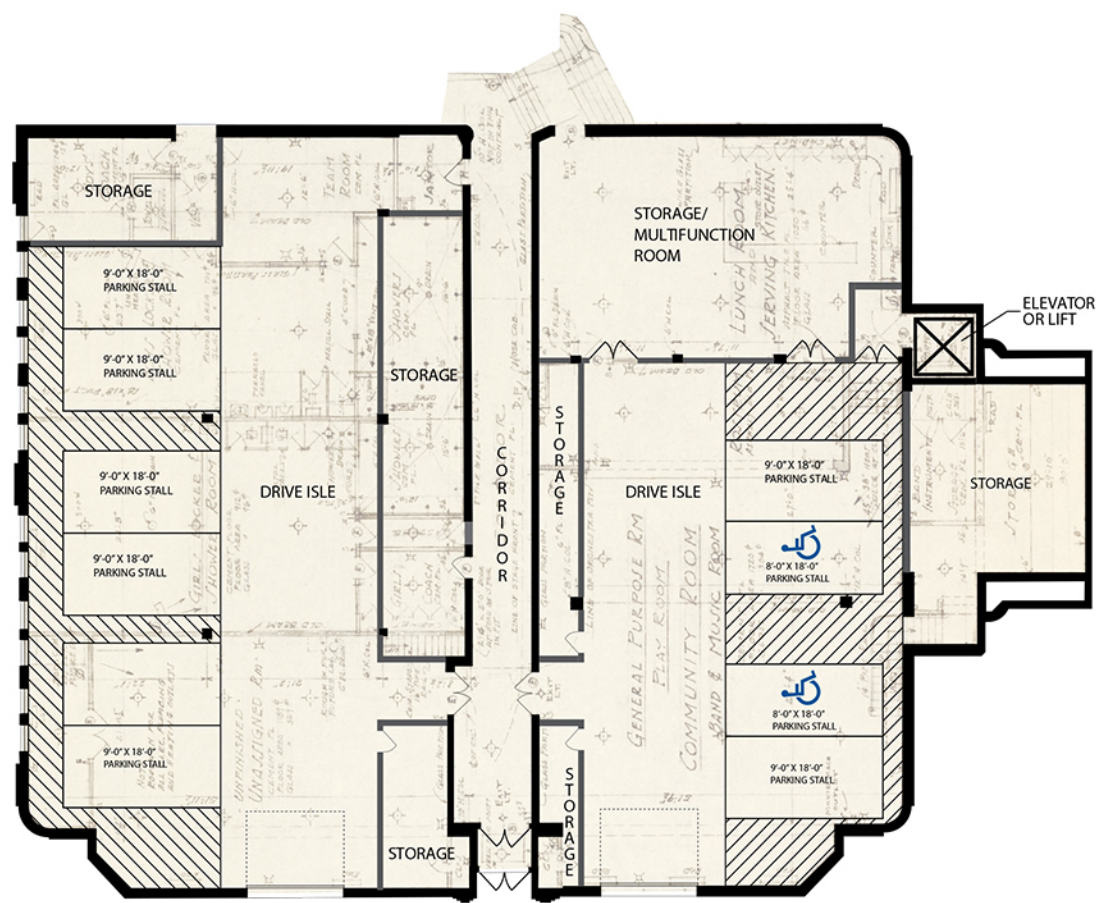
Theatre balcony seating

PROJECT OBJECTIVES

1. Provide a space that the community can use for various activities including movie screenings, school dances, and arts and crafts shows and activities. Provide a space where members of the community can come to get exercise.
2. Address the accessibility concerns of the building, including providing dedicated accessible bathrooms for the theatre and gym spaces and addressing vertical circulation by providing lifts, elevators, or ramps.
3. Provide covered parking in the building's lower level as well as extra storage space for the building.



Ground floor looking from front doors into lobby space



FLOOR PLAN

- Chandelier
- Can light
- Emergency Exit
- Cooling System
- Fan/Venting
- Heating System
- Electrical Switches
- Speaker Locations



MECHANICAL PLAN

PARKING & SITE PLAN

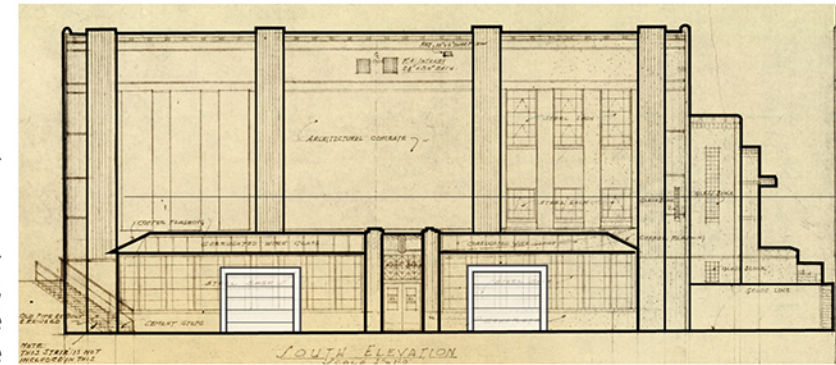
PARKING

The ground floor of the building originally contained boys and girls locker rooms, a serving kitchen, music room, and storage space.

The proposed plan would incorporate 10 parking stalls including 2 hand-capped accessible spaces. Due to the structural layout of the building, the lower level is very open for much of the space but drive isles would be very narrow and would only be able to provide 1-way traffic. The garage would be divided into 2 separate garages, with their own entrance off main street to maintain the building's central corridor for accessibility. A lift provides access up to the 1st floor where the theatre and gym spaces are.

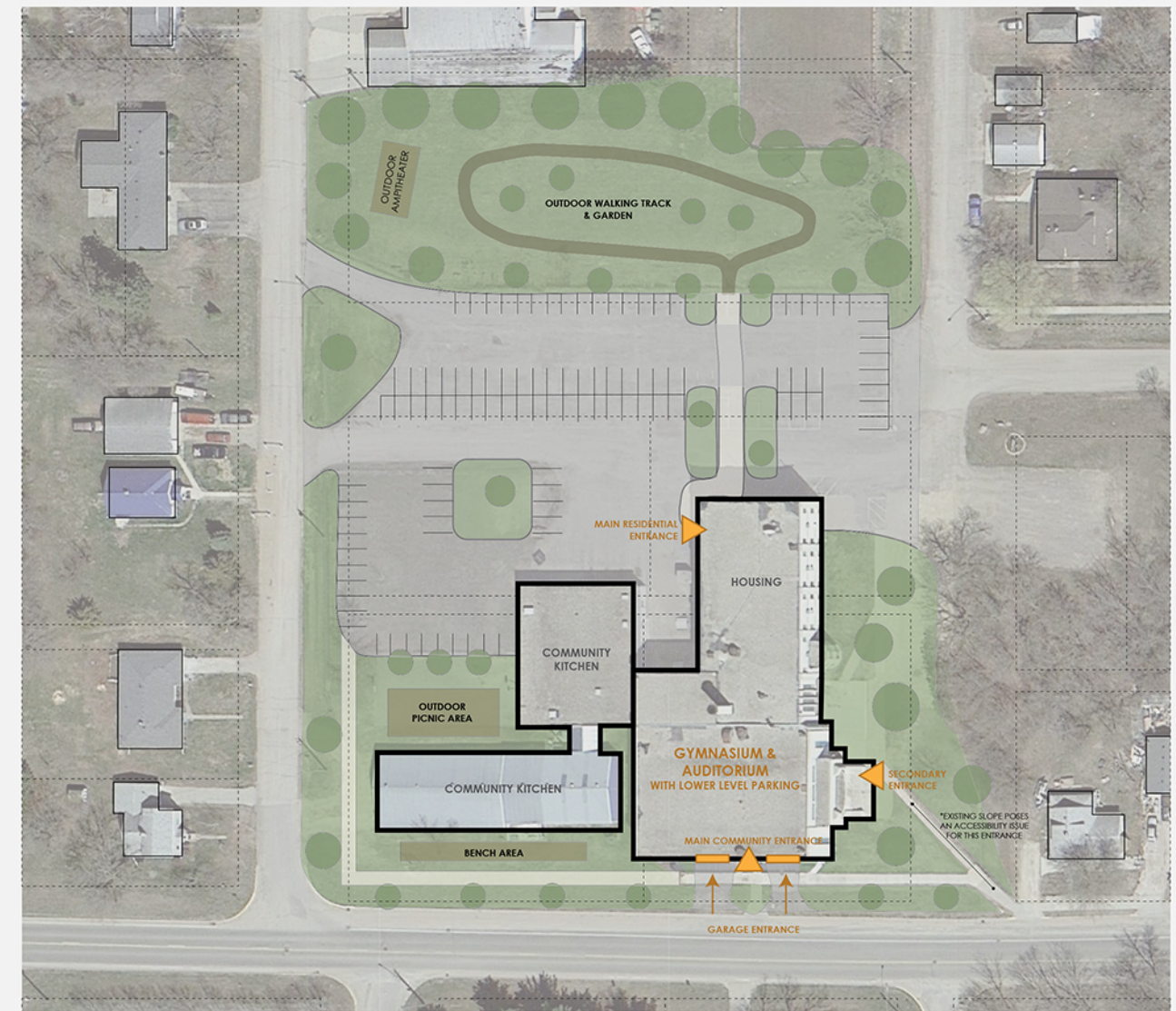


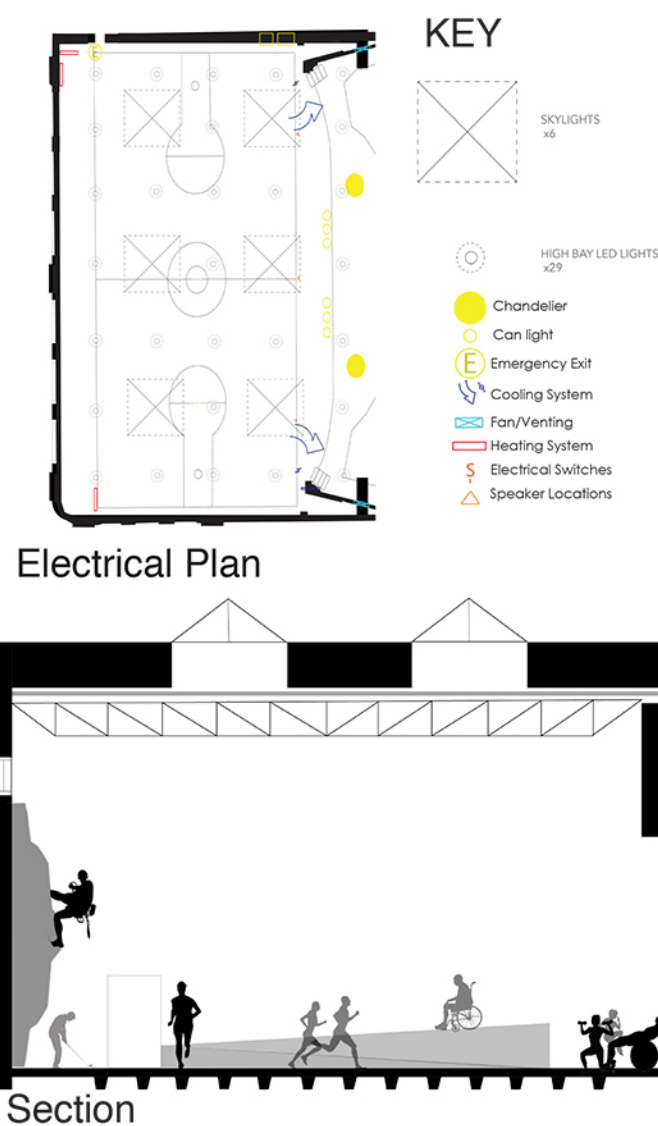
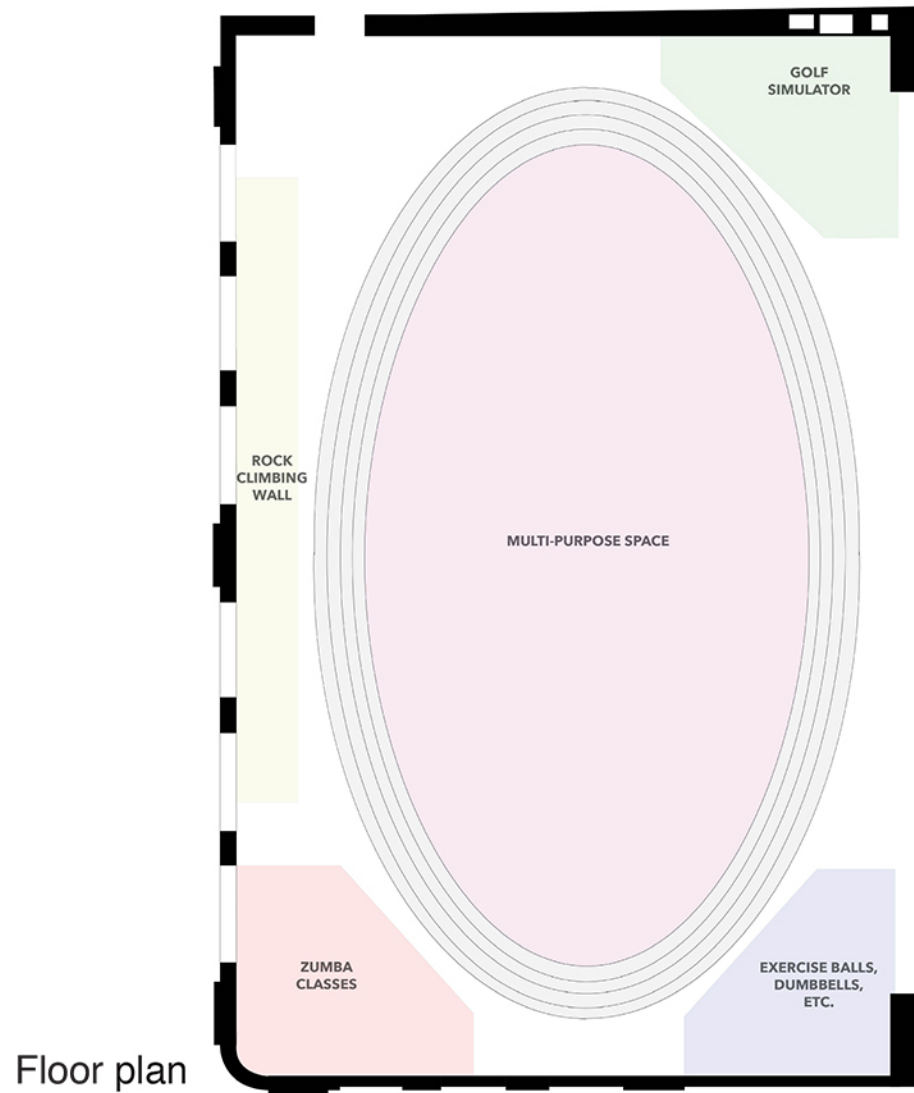
SITE PLAN



SITE

The site plan keeps the existing parking in tact and shows the new garage entries at the south of the plan. The plan also includes a walking garden for residents of the future housing and the community members.





GYM DESIGN CONCEPTS

The main design concepts of the gym include lighting and programming strategies. By implmenting skylights into the gymnasium's core, natural light will lower monthly utility bills. Providing an interchangeable program will allow for full optimization of the space. Connecting the activities within the gym with the auditorium space will allow for community connection and increased engagement.

Interior Design Ideas

Lighting



SKYLIGHTS
naturally brighten space
lowers monthly utility costs



HIGH BAY LED LIGHTING
safe for gymnasium spaces
lower utility costs

Materials



Glass Partitions



Programming Ideas



ACTIVITY OPTION:
Zumba/ interactive class



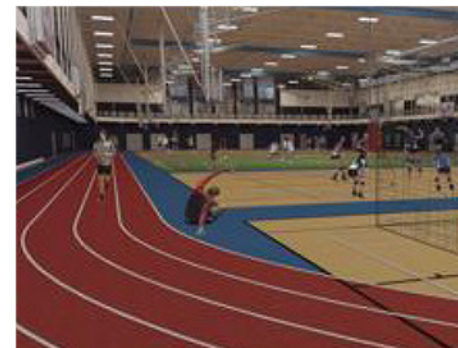
ACTIVITY OPTION:
exercise corner



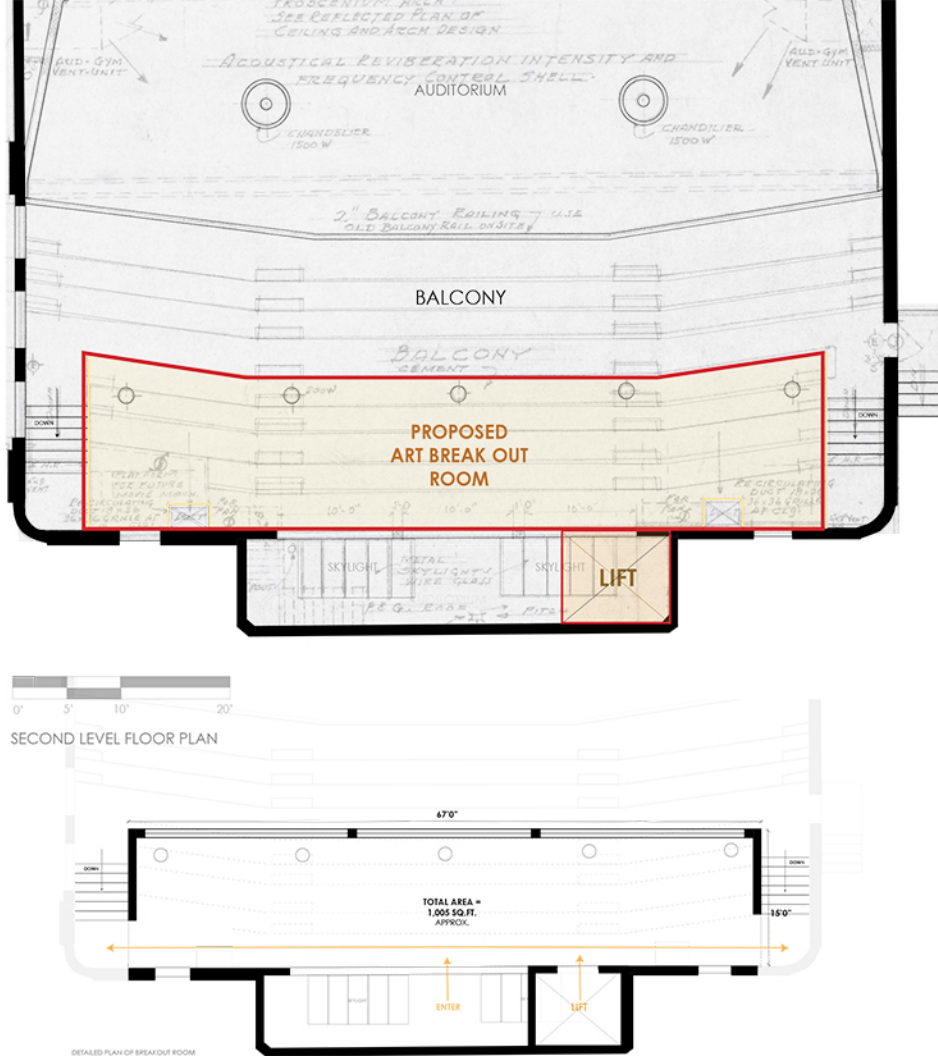
ACTIVITY OPTION:
rock climbing wall



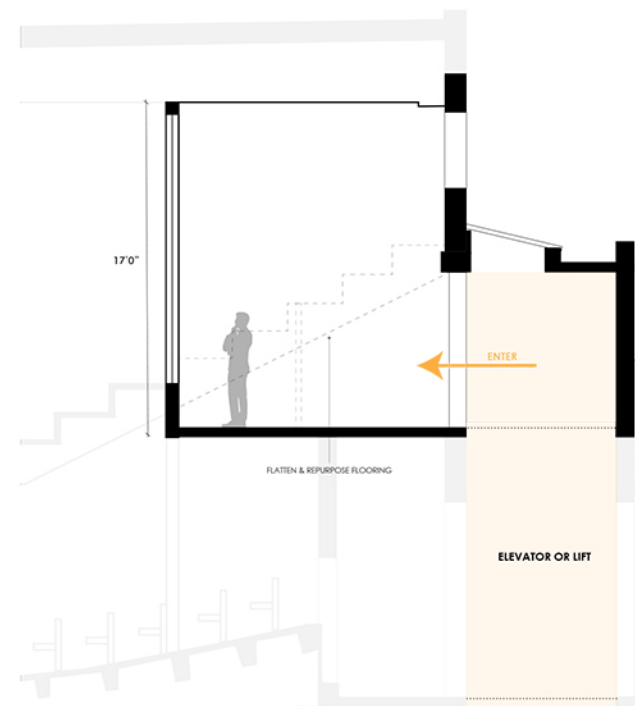
ACTIVITY OPTION:
golf simulator



INDOOR TRACK
allows for year-round indoor exercise
can be used by all ages
allows for other activities to take place at the gym's center



Floor plan



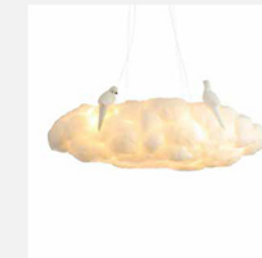
Section

MEZZANINE

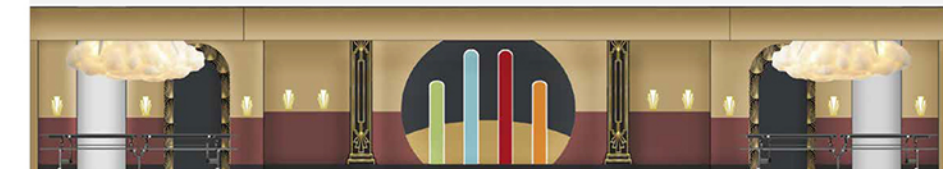
The mezzanine will act as a multipurpose room for the residents of the building and members of the larger community. Located on the second level of the auditorium, this room will be accessible by lift or elevator from the first floor vestibule area. The mezzanine also hosts balcony seating for the auditorium, so the multipurpose room is designed around this current circulation path.

Interior Design Ideas

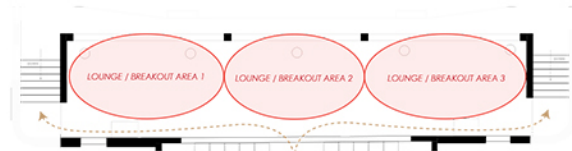
Lighting



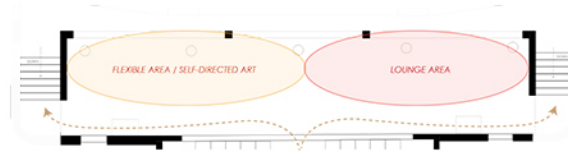
Materials



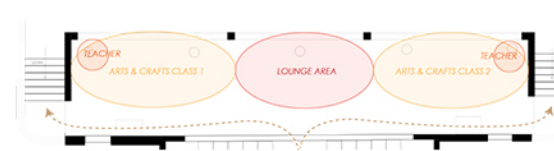
Programming Ideas



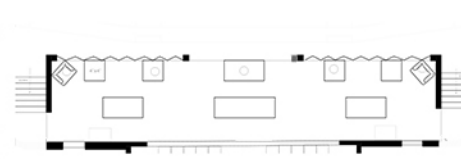
Concept A
Break space into three equal lounge or break out areas for social activities.



Concept B
Divide space into two equal halves; a flexible area for self-directed art and a lounge area for social activities.

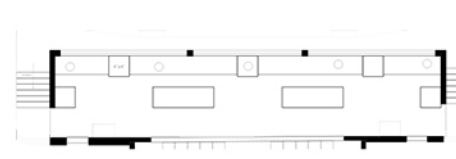


Concept C
Break space into three areas; two larger classrooms for instructor-led art classes divided by a lounge area for social activities.



Window Option A

Glass bifold, "accordion" style door allows for flexibility, connection, and interaction between the mezzanine, auditorium, and gymnasium.



Window Option B

A fixed glass panel allows for visual connection to the auditorium and gymnasium while also maintaining individual program space for the multipurpose room.



Glass Bifold "Accordion" Style Door



Glass Panel Overlook

