

2023 Home of the Month Look Book



Minnesota



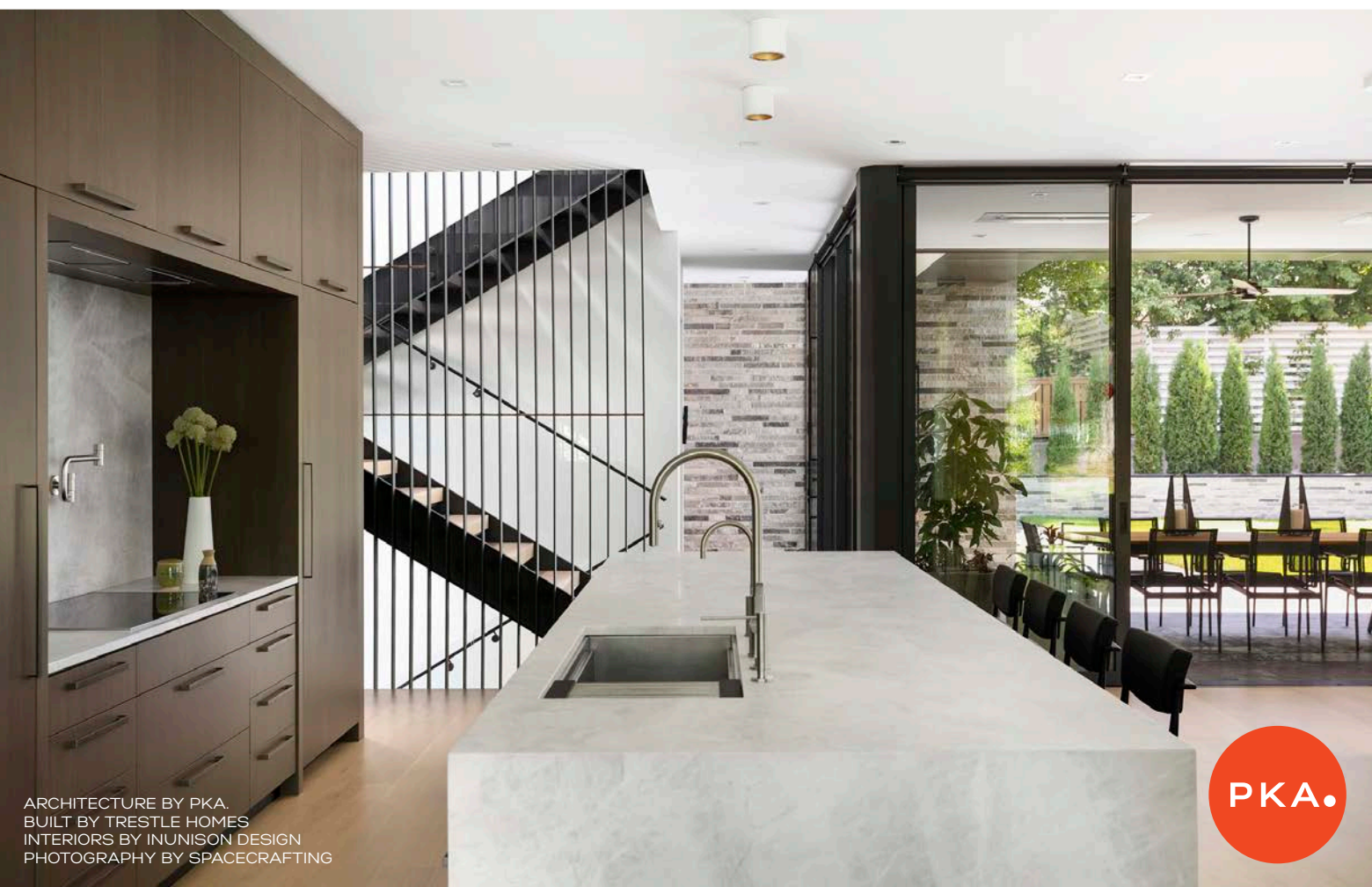
StarTribune



Photo: Half Acre House. See **page 53** for home details.



ORGANIC MODERN



ARCHITECTURE BY PKA.
BUILT BY TRESTLE HOMES
INTERIORS BY INUNISON DESIGN
PHOTOGRAPHY BY SPACECRAFTING

PKA.



Builder: Redstone Architectural Homes; Architect: Christopher Strom Architects

WHAT WILL YOU MAKE POSSIBLE?

Your designs set the stage for incredible experiences in home or commercial projects, and we want to make sure you have everything you need to make them happen — from indoor/outdoor products to contemporary designs to sustainability certifications and detailed CAD/BIM files. Let nothing stand between you and your vision.



Get support for your designs at andersenwindows.com/for-professionals/architect.

"Andersen" and all other marks where denoted are trademarks of Andersen Corporation.
©2022 Andersen Corporation. All rights reserved. 08/22



DAVID
HEIDE
design
studio



ARCHITECTURE ■ INTERIOR DESIGN ■ RESTORATION
DHDSTUDIO.COM | INFO@DHDSTUDIO.COM | 612.337.5060



imprint
Architecture + Design, llc

new homes. cabins. renovations.
commercial spaces. breweries. distilleries.
washington. wisconsin. minnesota.
stillwater. twin cities. up north.
creative. collaborative. sustainable. timeless.
architecture.

651.440.0334 | imprintarchitecture.com



Home of the Month Look Book

Find Inspiration on Every Page



Photo: Round Three Photography. See page 38 for home details.

AIA Minnesota is pleased to present a look book featuring architect-designed homes throughout the Midwest region that showcase the innovation and skill of Minnesota architects. The projects on the following pages were each submitted for the 2023 Home of the Month program, a 21-year collaboration between AIA Minnesota and the *Star Tribune* that highlights a different architect-designed home each month in the Sunday Homes & Gardens section.

From among the pool of 43 projects submitted this year, a panel of experts selected 12 that best represent the pinnacle of architect-client collaboration and demonstrate the innovation, problem-solving, and creative design skills that architects bring to a project. These 12 distinguished homes are identified with a corner ribbon icon. Watch for the projects to be featured over the next 12 months in the *Star Tribune*, both in print and online.

We hope you'll find inspiration for ways to make your own living spaces more comfortable, efficient, and beautiful. Contact information for each project's design team is included. Enjoy the beauty found in the following pages, and let inspiration find you.

About Us



The *Star Tribune* is Minnesota's #1 local source for news, information, and community events. Throughout its 150-year history, the *Star Tribune's* focus has remained the same: delivering more of what matters to Minnesota. All day. Every day.



The American Institute of Architects Minnesota is the professional association for architects in Minnesota. As a state component of AIA National, with three local chapters, AIA Minnesota has nearly 2,300 members. AIA Minnesota produces a regional convention, publishes the digital monthly *ENTER*, lobbies on behalf of the profession, and more.

Projects by Firm

Use the table of contents below to browse projects by the firm that designed them. Page numbers in bold indicate that the project has been selected as a Home of the Month feature for 2023–2024.

Albertsson Hansen Architecture	12, 29, 47 , 63
Alchemy	13
Cermak Rhoades Architects	31
Charles R. Stinson Architecture + Design	25
Christopher Strom Architects	22 , 41, 60
CityDeskStudio	30, 50
David Heide Design Studio	14, 40
ERE Architecture	34
fuse57	38
hw ² design + architecture	11
Imprint Architecture and Design, LLC	44
Joy Architecture + Interior Design	18, 37, 56
McMonigal Architects	24, 46
Mitlyng Design	53
PKA Architecture	36, 54
PLAAD	28 , 58
Rehkamp Larson Architects	10, 26, 32, 43, 48, 62
SALA Architects	17 , 35 , 52, 55
Shelter Architecture	20, 45
TEA2 Architects	16
Unfold Architecture	19, 42

Are You Ready to Hire an Architect?



Photo: Farm Kid Studios

Thinking of a new home or remodel? Use these questions to get a deeper picture of your wants and needs.

When approaching a project as substantial—perhaps even scary—as building a new home or remodeling your current home, you want to make sure you get it right. Before interviewing architects, those undertaking a new construction project should interview themselves. Below are some questions to help you identify what you truly need and want out of a new

home. You may even be surprised by what you learn! Each person invested in the home is encouraged to answer these questions separately, then come together to discuss.

Describe your current home.

What do you like about it? What don't you like? What's missing?

What do you want most in a new home?

What aspects of the land are important to you? How do you want to use the outdoor space? What do you want to preserve on your site?

What is your lifestyle like?

Do you spend a lot of time at home? Do you entertain? Do you work at home? How has the pandemic shifted your activities and priorities, and how does that change your vision for your home?

Do you have ideas for the style of your new home?

How much time and energy are you willing to invest in maintaining your new home?

What materials and finishes are you most interested in using?

Is there anyone with a disability or other special needs who would be using the home? Do you envision staying in this home long enough that age-in-place design needs to be considered?

How invested are you in including energy-efficient features? Are there other aspects of sustainable design that are important to you, such as recycled materials, non-toxic finishes, high-performance mechanical systems, or renewable energy sources?

How soon do you want to be living in your new or remodeled home? If remodeling, how much

disruption in your life can you tolerate?

How involved do you wish to be in the process?

What's your budget? This amount needs to account for construction permits, fees, and utility work, as well as professional services and materials.

Once you've answered these questions, you should have a plan for your project that you can bring to a design team. Taking the time to develop your vision and priorities will help ensure that your project accomplishes your goals.

Learn what questions you should ask when interviewing architects on page 64.



ah

Albertsson Hansen
Architecture, Ltd.

Thoughtful Design. Delightful Living.

Architecture & Interior Design 612.823.0233 | www.aharchitecture.com



Kenwood Refresh | Remodel

A family with three growing teenagers wanted more functionality in their stately 1931 home. The home's existing spaces were carefully reimaged, taking inspiration from the original details and trim. Space for a mudroom and large closet with room for coat and shoe storage was carved from underused cabinets built into the family room.

With the original ceiling's barrel vault removed, the kitchen became bright and open. A kitchen island with seating was important to the family, so room was maximized to allow for island storage while still maintaining enough space for circulation. An efficiently designed pantry rounded out the kitchen's improved functionality.

Upstairs, in the owner's suite, a vaulted ceiling in the bathroom became full height and the space was redesigned to include two sinks, a more functional bathtub space, and realigned shower and toilet spaces. This gracious, nearly century-old home is now ready for the next 100 years.



Photos: Alyssa Lee Photography

Rehkamp Larson Architects

rehkamplarson.com • (612) 285-7275

Design team: Mark Larson, AIA; Laurel Johnston, AIA





Photos: Jasper Lazor with Gaffer Photography



Butterfly on the Prairie | New Build

The homeowners were ready to downsize, and they wanted their final home to have age-in-place features, an aesthetic that wedded wood tones and an industrial feel, and spaces for entertaining.

The chosen design, which features a butterfly roof with exposed steel beams to carry the roof panels, nestles into the landscape and mimics the surrounding prairie. To meet dual goals of

sustainability and minimal maintenance, the design incorporated a high level of insulation, structural insulated panels (SIPs) were chosen for the walls and roof, and heating was selected based on energy modeling for the site. To prepare for aging in place, the home has zero-grade transitions at the entrance doors, ADA-compliant doors and clearances throughout, blocking for future grab bars, and more cabinet space down low (as opposed to above counters).

Exterior colors and materials incorporate wood, charcoal, and gray tones. In the summer, the white outline of the roof stands out from the trees beyond. In the winter, the masses of the structure nestle into the snowy prairie. Water is directed off the roofs to minimal collection points for all the gardens.

hw² design + architecture

hw2design.com • (612) 532-4147

Design team: Andrea Hammel Wollak, AIA; Jon Wollak, RA





Classic Modern Color | Remodel

The simple shape of the original 1924 home was expanded toward the backyard with an equally simple two-story square housing the kitchen below and the primary bedroom and closets above. Both spaces overlook the backyard where the family keeps chickens. A small back-entry vestibule with a covered stoop completes the addition.

The original kitchen was converted into a mudroom, pantry, and half bath, while, upstairs, one of the small bedrooms was converted into the primary bathroom. The kitchen and pantry use fresh colors on the trim and cabinets, keeping the mood fun and lighthearted. The original stained birch windows, trim, and doors were retained and extended in the new construction, blending with the new colors.

The half bath and primary bedroom feature colorful wallpapers, and the primary bath brings a bit of whimsy in with a patterned floor tile. The addition's vertical board-and-batten siding contrasts with the stucco of the original home—a modern, cost-saving solution.



Photos: Round Three Photography

Albertsson Hansen Architecture

aharchitecture.com • (612) 823-0233

Design team: Christine Albertsson, AIA; Ian McLellan, AIA; Sarah Hughes; Paul Harms, Assoc. AIA; Marli Post





Photos: Alchemy

Longfellow Porch | Addition

This remodel seeks to transcend the porch as a celebratory pavilion on a well-traveled route to the Mississippi River. Especially in the north, being able to live and work from a porch during colder, darker days means more nature for more of the year.

To clean up a formerly awkward facade, this remodel added a thin, steep roof that continues the house roofline. After reaching its low point mid-porch, it bends and rises again to the west, letting in light and extending to cover the garage steps. The

quirky triangular glazing panel adjacent to the house accentuates the lightness of the porch's roof while also making it a connected-yet-separate pavilion.

Tiered deck levels allow for privacy, dining, and entertaining, integrating the house with the yard. Wood from the existing cedar fence was partially reconfigured to create a horizontal screen for the pavilion. Weathering steel columns and trim provide a slender, insulated, lantern-like structure with a natural, durable exterior. A tough, lightweight, economical, thin-film porch wall system is easily opened but allows for nearly year-round use because of the small stove.

Alchemy

alchemyarch.com • (651) 647-6650
Design team: Geoffrey C. Warner, FAIA; Kotono Watanabe





Northwoods Redefined | Remodel

Sometime in the 1990s, a large addition in the form of an entire house was added to a small 1950s cabin on this site, leaving the older building largely untouched. With minor changes to the footprint, the architect reimagined the addition, creating a whimsical, contemporary space with a natural palette and plenty of connection to the world outside.

Change to the building's volume affords a dramatic increase to the scale of the windows. New dormers above the foyer entry and dining room also brighten the loft through its smoked glass rail. A small addition toward the lake accommodates a larger dining room table and increased entertainment area in the lower level. The screened porch was expanded and now includes built-in seating while a new front porch welcomes guests.

A proper northwoods mudroom offers commodious storage. The abundant texture of nature is incorporated into the finishes of each room, linking the architecture to the landscape.



Photos: Rich Michell

David Heide Design Studio

dhdstudio.com • (612) 337-5060

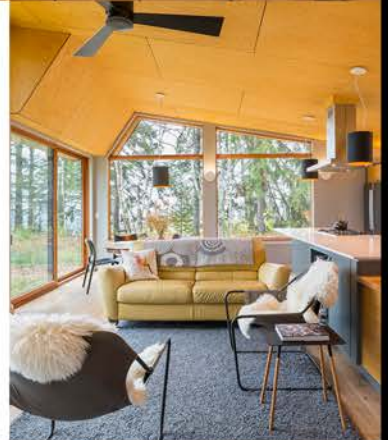
Design team: Chris Christofferson, AIA; David Heide, Assoc. AIA; Leanna Kemp-Kristoff



INTRODUCING LUM STUDIOS. CONSULTING WITHIN A CURATED EXHIBIT OF THE
FINEST LIGHTING FROM EUROPE THE US
OPENING JUNE 2023. DULUTH



CF
design
www.cfdesignltd.com
218.722.1060 / 218.343.0983



Lūm



Photos: Scott Walker Photography

Lakeview Shingle Style | New Build

When the owners acquired a rare lake lot on historic Manitou Island in White Bear Lake, they knew they wanted a home with modern living spaces but a classic and traditional feel that fit into the historic nature of the neighborhood.

The location's pie-shaped lot and setbacks inspired the fan-shaped design that expands toward the lake. This creates a broad, direct connection to the lake that the owners craved—with all key living spaces looking out over the lake instead of toward the island road.

The house has seven gables. Five stitch back and forth along the curving roof; three occupy the lakeside width and provide extensive lake views, while two complement the narrower entrance side. Porches on the front and back of the house ensure maximum daylight and outdoor views from every main living space. Instead of solid walls, rooms are defined by two-sided glass-front cabinets, allowing glimpses through to other rooms, distant windows, and the outdoors.

TEA2 Architects

tea2architects.com • (612) 929-2800

Design team: Tyler Hillger, AIA; Dave Nahey; Nima Meghdari; Tyler Smith; Tom Henningsen; Ruth Foster, Assoc. AIA



Home of the Month
Selected Project



Torched & Porched | Remodel & New Build

The owners wanted to recycle a small, dated, inefficient home and replace it with a small, modern, energy-efficient one to accommodate a young family of five. The resulting house is a one-and-a-half-story, compact home that finds the sweet spot between the one- and two-story homes in its evolving neighborhood. A simple palate of materials resonates inside and out. The exterior sports a black, standing-seam metal roof and Shou Sugi Ban siding as a rich backdrop to the two natural cedar porches in the front and back. The interior is white with maple floors, doors, and cabinets as well as accents of black metal lamps and bar stools.

The owners were never interested in expansive square footage; they simply wanted a modest home that lived large, within walking distance of a neighborhood school for their three boys. On the main level, the architect achieved this with an open plan with nine-foot ceilings and an anchoring kitchen flanked by living and dining; a mudroom alcove and a small “away room” are the only counterpoints. The basement is a wide-open, indestructible homage to the Minnesota Twins’ demolished Metrodome, where this baseball-loving family can play Wiffle ball to their hearts’ delight all year long.

SALA Architects

salaarc.com • (612) 379-3037

Design team: Eric Odor, AIA; Nate Ehrlich





A New Home for Art | Remodel & Addition

This home underwent a dramatic three-level transformation to create moments for an extensive art collection to shine while updating the house and improving access to outdoor space.

A small addition made it possible to create an open kitchen, dining, and living concept. A guest bathroom was relocated and incorporates a combination of rich finishes, distinctive wallpaper, and modern tile work. The living room space now faces the backyard and includes a large gas fireplace with a custom fire tile surround. The mudroom features a detailed white oak slat wall with built-in benches and plenty of storage. The basement was also updated to improve aesthetics while creating space for a home wine cellar.

In the owner's suite, the bath features a walk-in steam shower and a custom ombre wall mosaic behind the soaking tub. The upstairs guest bath features eye-catching geometric tile and custom cabinetry. The client's artwork and glass art are highlighted throughout the home with a fully automated lighting system. There are special lighted niches for glass art to shine through the home.

Joy Architecture + Interior Design

joyarchitecture.com • (612) 616-9472

Design team: Joy Martin, AIA; Allison Landers; Laura Cayere-King, Assoc. AIA; Kayla Holzhauer





N46° 57' 54" | New Build

Along Minnesota's North Shore, everything revolves around Lake Superior. N46° 57' 54" is no exception. The cabin's design is based on a precise grid, with the repetition of exposed wood beams and expansive windows providing a sense of organized serenity. The cabin has two distinct wings—one containing the bedrooms and the other housing the public spaces. Despite their differences, both wings maintain a strong connection to the outdoors, providing a cohesive cabin backdrop for their unique functions.

To ensure that the cabin is as energy-efficient as possible, ZIP R-sheathing was used and structural insulated paneling (SIP) was selected for the roof strategy, which, combined with the R-sheathing,

provides a completely thermally broken exterior shell for the building.

Exposed natural materials paired with elegant, clean lines bring a sense of harmony between the outdoors and the inviting interior. The views are oriented to take in the morning sunrise over the lake and focus the attention on what matters most in a cabin: the outdoors.

Unfold Architecture

unfoldarchitecture.com • hello@unfoldarchitecture.com

Design team: Mike Gray, AIA; Greg Vose, AIA





Farm Kid Studios

Flower Valley Homestead | New Build

Conceived as a modern country home, the house is designed to fit and frame its stunning natural surroundings. Set on a former apple orchard in southern Minnesota, the residence is a forever home designed with aging in place in mind, while the walkout lower level accommodates guests with both a fun and functional bunk room and a bedroom suite.

The kitchen provides panoramic views of the valley landscape. Windows above the sink and the stove and a lack of upper-level cabinets provide unobstructed pristine views. The home’s vantage point allows the owner to spot approaching guests. Three workstations accommodate communal cooking sessions when the adult children come to visit.

In warm weather, dining on the main-level screen porch is a must. Open to the landscape on three sides, with easy access from the kitchen and living room, the screen porch is the perfect calm spot for morning tea, lively lunches, breezy afternoons, and sunset dinners. The home’s spacious garage affords ample storage for outdoor gear and vehicles, and when the day’s activities are done, a soaring living room with a fireplace and windows overlooking the valley create space for calm reflection.



Shelter Architecture

Shelter Architecture

shelterarchitecture.com • (612) 870-4081
 Design team: Beth Halstenson, AIA; Jackie Colpeart; Jennifer Wojtysiak, Assoc. AIA; Lisa Antenucci; Greg Mackenzie; Kurt Gough, Assoc. AIA; Jackie Millea, AIA; John Barbour, FAIA

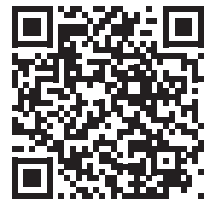




Photos courtesy of Spacecrafting

Make space for dreams come true.

Making your client's dreams a reality is a complex process with many moving parts. A partner who understands this can be invaluable. At Marvin, we take considered care to deliver inspired design, high-quality windows and doors, and life-bettering innovations. It's all to help you make space for distinction, expression, and everything that matters most to you and your clients.



Scan to connect
with a Marvin expert
to collaborate.



Home of the Month
Selected Project



Photos: Alyssa Lee Photography

Sunflower | New Build

This accessory dwelling unit (ADU) was designed for a client seeking to bring her community into her backyard. Her adult son, a graduate student in architecture, collaborated with the architect in the design process, eventually becoming the home's first tenant.

The 715-square-foot building is screened from the street behind the primary residence. An existing detached garage on the site allows this ADU to utilize both floors as living space. Main floor

living spaces (kitchen and living room) are just steps away from the garden and chicken coop. Color and texture bring a modern warmth to the interior of this small structure. The main-level flooring is polished concrete infused with radiant heat, providing a rich contrast to the muted green cabinetry. No fossil fuels are used for powering the appliances, and the heating and cooling are handled with electric mini-splits. Structural insulated panels (SIPs) were custom fabricated for the project to reduce construction waste, provide a highly insulated assembly, and reduce outdoor noise in this urban location. Solar panels were added to the detached garage to power the ADU.

Christopher Strom Architects

christopherstrom.com • hello@christopherstrom.com
Design team: Christopher Strom, AIA; Eric Johnson, AIA; Isaiah Scharen, AIAS



In collaboration with John Kraemer
& Sons and Christopher Strom
Architects



inunisondesign.com

inunison DESIGN
innovative. inventive. inspired.

612.659.1775



After the Fire | New Build

After a devastating fire destroyed their late-1800s home, the owners decided to rebuild. This new home is carefully situated on a 2.5-acre rural site with views to a nearby marsh. The owners wanted to take full advantage of the rural setting and find a home for their self-described quirky collection of contemporary and antique furnishings.

The rebuild minimizes the impact on the natural setting, preserving mature trees and protecting natural vegetation,

wetlands, and flood plain near the home. A modern, rustic, lived-in vibe with natural materials and open, light-filled spaces are paired with sustainable features, including roof-mounted solar panels. Inside, there is a combination of wood, metal, and concrete finishes and textures. Slab-on-grade concrete floors include in-floor heating. Open-concept public spaces are separated from private spaces, including a smaller second floor with space for guests. Age-in-place design solutions, such as having the primary living spaces on the first floor, will enable the occupants to stay in their home for the remainder of their lives. On the exterior, corrugated metal and cedar siding blend in with the natural landscape, and a variety of window sizes and placements creates a playful, informal feel. A covered side porch and screen porch extend the living spaces and connect the indoors with the outdoors.

McMonigal Architects

mcmonigal.com • (612) 331-1244

Design team: Rosemary McMonigal, FAIA; Kyle Thrapp, AIA; Nick Dellwo; Phil Hofstad





Gaffer Photography



Paul Crosby

Moon Dream | New Build

This single-family residence on the west side of Lake Waconia is sited on property that had been a campground for many years. The clients wished for a sanctuary-like space on this historical site for their extended family. “Moon Dream” evolved to become a family camp allowing three generations to come together.

The architectural design elements were carefully composed to create a home that connected its occupants to nature, providing a sense of refuge and retreat while beautifully responding to

the program. A winding drive welcomes guests and leads to the single-level design where every living space has a calming view of the lake. The completed site includes a beach, dock, and lakeside guest campsite where visitors can relax outdoors. The warm-feeling great room area is anchored by a floor-to-ceiling fireplace of natural limestone rising above the space into the horizontal soffits and clerestory atop. Natural light enters the room through the clerestory windows and the adjoining covered terrace area, which features another stone fireplace.

The kitchen, with earth tones of granite, burlled maple, and rifted white oak custom cabinetry, and chef-inspired cooking spaces, invites one to cozy up to the counter for a conversation with the cook. A connected family dining area is just steps away.

Charles R. Stinson Architecture + Design

charlesrstinson.com • (952) 473-9503

Design team: Charles R. Stinson, AIA; Chuck Thiss; Kim Streeter; Ben Bower



Shari Fleming Photography



Cape Cod Transformed | Remodel

The homeowners were on the hunt for a home with one-level living and space enough for the whole family at the holidays. Working within the confines of an Edina Cape Cod's existing footprint and respecting the existing symmetry created by regular window placement, the architects rearranged the home's main level to open up dark, disconnected spaces for relaxed modern living. The kitchen moved to a sitting room while the once-isolated dining room now sits in the heart of the home.

The original dining room became a study with a wall of built-in shelving. The living room now connects to the rest of the home and is comfortable and filled with shared light. The entry is lightened by the slatted wood-screen wall along the stairs, the generous connection to the dining room, and a new door with sidelights. The only new space is a screen porch, added to increase summertime enjoyment of the yard. The porch ties the main living spaces together and is now one of the most-used spots in the home well into the colder seasons.



Photos: Scott Amundson

Rehkamp Larson Architects

rehkamplarson.com • (612) 285-7275

Design team: Jean Rehkamp Larson, AIA; Anders Matney, AIA



Builder: Kyle Hunt & Partners
Interiors: Alecia Stevens
Landscape: Yardscapes
Photo: Scott Amundson

REHKAMP LARSON ARCHITECTS

rehkamplarson.com 612.285.7275

Discover the
**architect-designed
difference** at the
Homes by Architects Tour.

September 23–24, 2023.
Tickets available in August.

Learn more at
homesbyarchitects.org.



Photo by Corey Gaffer. Designed by SALA Architects.

Home of the Month
Selected Project



Sunfish Lake Contemporary | New Build



Photos: VONDELINDE

This unique property is heavily wooded with a restored prairie to the east. The client expressed a need for a main-level owner's suite, a main-level guest suite for aging parents, and a large entertaining space. Most essential to the client was the functionality of the spaces, the blurring of inside and out, and employing space, light, and material to create intimate, personal, and memorable experiences. A solar access study—understanding where the sun is rising and setting on the site over the course of

the year—was integral to the design because the client also wished to eliminate as many shading devices as possible within the home.

With a curated and restrained one-level entry, the home is thoughtfully positioned to engage the boundary condition between prairie and woods. The home enables the owner to exist in the threshold between the two landscapes, rather than favoring one over the other. As one moves through the home, the prescribed and serendipitous views, the immediacy of the surrounding environs, and the effervescent interplay of light and shadow create a rooted, dynamic, and very personal living space.

PLAAD

plaadoffice.com • info@plaadoffice.com
Design team: Mark Stankey, AIA; Matt Byers, AIA; Peter Kluzak;
Nicole Norris (I/O Design Office)





Merriam Park Remodeling | Remodel

A small 1916 storybook house with a picket fence in St. Paul, this home had a small and outdated kitchen cut off from the rest of house, lacked connection to the backyard, and was missing a mudroom and first-floor bathroom. The goals for the addition were to expand the second floor to create a total of three bedrooms, update and expand the kitchen to open it up to the existing dining room, and carve out space for a new first-floor half bath and small mudroom.

The owner was interested in creating a clean, fresh feel throughout the house while keeping the vintage feel of the original house intact. White Shaker-style cabinets and marble counters make the most of the available daylight, and the original, dark-stained trim was painted white to unify all the first-floor spaces. To further increase the airy feel of the available space, high windows were added on the long side of the kitchen facing the neighbors, with shelves below them for everyday dishes instead of the typical rows of continuous upper cabinets.



Photos: Wing (Ta) Ho

Albertsson Hansen Architecture

aharchitecture.com • (612) 823-0233

Design team: Todd Hansen, AIA; Jim Kuipers, Assoc. AIA





Photos: VONDELINDE

Kingfisher | New Build

The Kingfisher is a new infill home in Roseville. Because of its smaller footprint, as many spaces as possible would need to serve double-duty and borrow windows, walls, and space from other rooms.

The hybrid spaces accommodate both solitude and togetherness, allowing the house to be small, yet live big. The guest room also serves as the home office; the dining room is an extension of the kitchen; the family room is an enlarged nook

sharing a two-sided fireplace with the living room; the away space for the kids is the oversized landing at the top of the stairs; and the central kitchen is also the main thoroughfare connecting all parts of the home and the epicenter around which the family's life can circle.

The exterior includes a covered and inviting front entry, a rooftop patio, shading for west-facing living room windows, and a covered grilling area opening onto the back. The push and pull of the two floors provides scale and animates the home, and a soaring butterfly roof emphasizes the east-west orientation of the house while evoking the lift and energy of a Kingfisher in flight.

CityDeskStudio

citydeskstudio.com • (651) 644-1106

Design team: Ben Awes, AIA; Chris Bach; Perri Kinsman



Home of the Month
Selected Project



Lutsen Cabin | New Build

This project is a small cabin for two on a wooded, sloped 48-acre site. The cabin's lower level anchors into the hill while the main level is positioned within the canopy of the surrounding maple forest.

The main level is a simple, open box with clear aspen paneling lining the walls and sloped ceiling. From the entry door, there is a path straight toward the large windows that capture a tremendous view over the valley beyond. The living area pairs views of the landscape with the glowing embers of the fire in the woodstove.



Photos: Farm Kid Studios

Awning windows on the east and west sides of the cabin capture morning and afternoon breezes for ventilation. The east- and west-facing windows allow for experiencing sunrises and sunsets from both sitting and sleeping areas. Exterior materials were chosen for their low maintenance and aesthetic qualities and include black-clad window frames, dark gray corrugated steel siding, clear galvanized standing-seam metal roofing, and cedar tongue-and-groove siding. Black and gray colors blend with the surrounding maple tree trunks, and the silver roofing reflects the ever-changing color of the sky throughout the day.

Cermak Rhoades Architects

Cermak Rhoades Architects has since been acquired by LHB, Inc.
(651) 659-0342

Design team: Todd Rhoades, AIA; Terri Cermak, AIA





Como Gardenside | Remodel

Ideally situated for its spectacular location overlooking Lake Como, this 1939 house full of bespoke moments and beautiful details felt too cramped for a large family. The owners also wanted more access to and views of their extensive backyard flower and vegetable gardens.

An addition was added off the back of the house to include a much larger kitchen with adjacent scullery, a sunroom, and a generous mudroom. Laundry was moved from the basement to the main level, and a bathroom was added for future one-level living. The scullery is a nod to the family's love of gardening.

A major feat of the remodel was improved circulation. The addition features three access points to the backyard—from the mudroom, the sunroom, and the scullery. While the front of the house sits facing beloved Lake Como, the impressive backyard garden was highlighted with numerous windows, a new deck, and a paver patio to provide plenty of space for outdoor dining and entertaining.



Photos: Scott Amundson

Rehkamp Larson Architects

rehkamplarson.com • (612) 285-7275

Design team: Mark Larson, AIA; Kathleen Freiderich, AIA



fuse

furniture • lighting • textiles
wallcovering • art



www.fusempls.com
612.345.4833



LAGOM ADU | New Build

Not too little, not too much, just right—or, as the Scandinavians say, lagom. The project was the new construction of an accessory dwelling unit (ADU) on a Minneapolis city lot. The ADU includes a fitness studio/garage on the ground level. Situated underneath the stairs and bathroom is a small mechanical and storage space that serves the new unit. The second level is an apartment, providing just the right amount of living space.

The design organizes the space into a band of private spaces and a sequence of open living. Clerestory windows run from the kitchen all the way to the deck along the north side of the apartment, providing a consistent soft light to the space. Large sliding doors open up to the deck and yard beyond, providing an open flow from the kitchen all the way across the apartment.

Materials were carefully selected for a sense of honesty and simplicity. Concrete floors with in-floor heat are dual purpose for the studio and garage. In-floor heat is also included below white oak floors in the living spaces above. Windows surround the main living space, providing ample light and sky views. White oak cabinets with natural soapstone countertops bring Scandinavian warmth to the space.

ERE Architecture

ere-architecture.com • (612) 460-7567

Design team: Edward R. Eichten, AIA; Cody Peterson, Assoc. AIA; Rebeca Peña



Home of the Month
Selected Project



Photos: Corey Cafer

LongHouse | New Build

Situated on 140 acres of rolling woodlands and prairie, LongHouse is the second of two cabins on a rural retreat intended to connect inhabitants to the natural surroundings. The owners are a multigenerational family who share their retreat as an Airbnb-style rental. The family's goal is for the cabins and land to be a restorative getaway, particularly for those who may need wellness recuperation.

LongHouse sits on the bluff edge of a small lake and is tucked within woods just beyond farm fields replanted with native prairie grasses. Two large oak trees anchor the building to its site and help shape the floor plan. A small twist in the floor plan helps preserve the oak trees and allows them to become part of the interior experience.

Interior spaces are stretched across the bluff edge in two interconnected volumes, one with a flat roof for the east bedroom and one with a soaring shed roof for the great room and west bedroom. Windows let in daylight, allow for cross-ventilation, and direct views into nature. Each bedroom has a generous bathroom, fireplace, or woodstove and is adorned with the same large windows and corner vistas as the great room.

SALA Architects

salaarc.com • (612) 379-3037

Design team: David Wagner, AIA; Roderick Vahr





Lake of the Isles Residence | New Build

On the verge of an empty nest, the homeowners found a small lot overlooking Lake of the Isles and commissioned the architecture firm to design a right-sized home that balanced their modern aesthetic with their appreciation for European design. Given the challenges of the sloping lot, tight setbacks, an existing driveway, and adjacent homes on either side, the design team created an elegant solution to the technical challenges, maximized daylight, and fit the desired program

within the compact footprint. The designers combined classical European design with modern elements to create a home that integrates easily into the streetscape. They responded to the compact, sloping site and resolved the clients' goals with a clean-lined, L-shaped home with an integrated kitchen, dining, and living area, an owners' suite that feels like a European boutique hotel with a "skybox" bay window, three bedrooms, a covered porch, a roof deck, and a tuck-under two-car garage. The elevated modern interiors feature top-quality finishes, a dramatic, sculptural staircase, custom cabinetry, statement lighting, luxe furnishings, original art, and unique accessories.

PKA Architecture

pkarch.com • (612) 353-4920

Design team: Ryan Fish, AIA; Gabriel Keller, Assoc. AIA; Chad Healy, Assoc. AIA; Peter Atkins, Assoc. AIA; Jared Nurnberger, Assoc. AIA; Cynthia Burns, AIA; David Swan





Investing in an Uptown Update | Remodel

The owners of this Lyn-Lake condo needed to update their space to match their lifestyle without sacrificing its expansive view of the Midtown Greenway. Although the transformation may appear simple, the condo underwent a remarkable renovation.

The kitchen and island were remodeled to be more functional and open toward the dining room, living room, and views. New floor-to-ceiling kitchen cabinetry accommodates larger appliances and pantry storage. An interior window was removed, making room for much-needed cabinet storage both in the kitchen and the new home office. The original makeshift bedroom was transformed into a new guest room/den. The new bedroom features a bed nook within a bookcase wall to store the owners' book collection. The bathroom updates feature floor-to-ceiling tile, modern wallpaper accent walls, a spacious soaking tub in the guest bath, and a double shower in the owners' suite.



Photos: Eric Mueller Photography

Joy Architecture + Interior Design

joyarchitecture.com • (612) 616-9472

Design team: Joy Martin, AIA; Laura Cayere-King, Assoc. AIA





Photos: Round Three Photography

Tonka Bay Lake Home | New Build

Built in 1915 as a seasonal Lake Minnetonka cabin, this home had gone through a handful of renovations but checked the boxes for this Realtor and their growing family to create their forever home. The design was shaped into an efficiently planned home with the main level comprised of the public living spaces and a three-car tandem garage.

Inside, guests pass through the double-height space of the stair and into the main open living area with large European, triple-

pane windows framing views of the lake. A stone-clad fireplace serves as an anchor that helps define the interior spaces as well as a transition to the exterior patio on grade. The upper level consists of a private family room, two bedrooms, kids' bath, laundry room, office, and primary suite that overlooks the lake. Windows that don't face the lake were strategically placed to frame treetops and sky while providing natural light and privacy.

The exterior is clad in cement-board siding and painted black to recede into the landscape. The interior material palette is purposefully simple, consisting of stained white oak flooring, ebony-stained white oak cabinetry and millwork, white quartz counters, powder-coated steel railings, and stone veneer.

fuse57

fuse57.com • (612) 845-3271
Design team: Mike Bader, AIA





kell. architects

kellarchitects.com



Steamship Moderne | Remodel

Drawing on Streamline Moderne and Art Deco design for inspiration, this condo's owner asked the architecture firm to reimagine the golden age of travel. Nearly the entire interior was removed and reimaged, allowing the design team to provide increased storage and functionality throughout. The biggest move was opening the dining room wall to create a visual connection through the kitchen and living room to the view beyond.

The primary bathroom is a study in Art Deco. Docked at a vertical slab of quartzite and wrapped in flame mahogany, the tub occupies center stage below an antique French chandelier. His-and-his lavatories sit beneath display niches and feature nickel inlay, as does the coordinating built-in linen cabinet. The dark powder room features the client's favorite color, Essex green, and is banded in nickel silver. The console lavatory, topped in Taj Mahal quartzite, sits on a spectacular marble mosaic floor.

David Heide Design Studio

dhdstudio.com • (612) 337-5060

Design team: Mark Nelson, AIA; David Heide, Assoc. AIA





Lowry Hill Conversion | Remodel

This home was originally built by a prominent real estate developer in 1901. The owners purchased the home with the goal of gutting the interior and implementing a cohesive and open floor plan that would last another 100 years, incorporating both contemporary and traditional Mediterranean aesthetics into the design.

A kitchen island was added by eliminating a secondary servant's stair while still accommodating a mudroom stair down to the driveway and basement. On the main floor, a new shortcut to the dining room offers longer views through the home and better ability to serve guests. A double-sided fireplace adds physical and visual warmth to the space as well as glimpses between the living room and dining room. A new covered terrace is accessible from three entry points and includes ceiling-mounted heaters to extend the outdoor season, increasing the feeling of spaciousness.

The most considered space in the upper level is the owner's bath. It incorporates a glass-on-glass partition combining etched and mirrored planes to form a dual shower enclosure and vanity wall. A sculptural tub occupies the opposite corner and offers views to the backyard.

Christopher Strom Architects

christopherstrom.com • hello@christopherstrom.com

Design team: Christopher Strom, AIA; Elizabeth Akkerman, Assoc. AIA





N44° 56' 4" | New Build

With views of Bde Maka Ska and close proximity to downtown, this empty-nester home is optimally located for entertaining, exploring the city, and connecting with the Minneapolis Chain of Lakes.

The design incorporates a gabled half-story on the third level. This space, typically designated as attic or storage in many homes, had to abide by strict regulations to be considered a half-story. But it presented a massive benefit: access to an

expansive roof deck with excellent views of the city. A bold, black metal staircase serves as the spine of the home, pulling guests up from the main level through a second-level game room and up to the roof lounge. Even with regulations forcing the space to be a bit cozier than initially anticipated, the third level is packed full of all the accessories a true entertainment oasis needs.

With a detached garage behind the home, the front of the house remains open, with large corner glass windows providing views of the lake and the glow of activity at night. Whether it's a full-on party or a night in with family, N44° 56' 4" is designed for gathering.

Unfold Architecture

unfoldarchitecture.com • hello@unfoldarchitecture.com
Design team: Mike Gray, AIA; Greg Vose, AIA





Lake Harriet Classic | Remodel

This classic 1916 Craftsman house had beautiful, unaltered bones and details in the formal front half of the house. But in the late 1980s, the kitchen was remodeled and an old attached garage was converted into a family room—both lacking details consistent with the original home. It also left the upstairs with a cramped primary bath and much-too-large family bathroom, which used to be the sunroom.

The new design reorganized the kitchen and reshaped transitions between spaces to incorporate the existing old house trim. Cabinetry details now match the adjacent dining room's original built-in buffet and could be mistaken as vintage. A second pair of windows added in the family room balances the light and now completely belies the room's former life as garage. Space on the second level was reallocated without shifting exterior windows, resulting in two comfortably sized bathrooms. This sensitive remodel brought the kitchen, family room, and bathrooms up to a consistent level of design without adding a square foot.



Photos: Scott Amundson

Rehkamp Larson Architects

rehkamplarson.com • (612) 285-7275

Design team: Jean Rehkamp Larson, AIA; Laurel Johnston, AIA



Home of the Month
Selected Project



Photos: Jim Kruger with LandMark Photography

Prairie Prospect | New Build

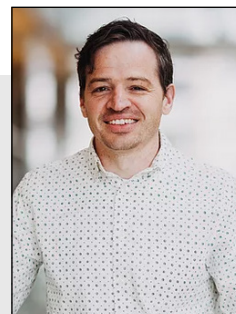
A young, newlywed Nepalese couple was drawn to the prairie and wanted to build a new home for their growing family. The design evolved from their modern sensibilities and connection to the land. With space for extended family to stay when visiting from Nepal, the new home was also designed to accommodate a future mother-in-law suite addition to the main floor for age-in-place living.

The resulting design includes a western-facing pool that anchors the home and is private from public view. The floor plan branches out on either side of the pool and courtyard to the north and west, maximizing interior daylighting and views of the surrounding savanna landscape from every room. The house sits low in the landscape, with its taller roof heights peeking out over the rolling hills. While Prairie Prospect has an open-concept plan, the family also wished to have privacy for movies and gaming. A secluded family room is located in the west wing of the home, with views to the pool and the prairie. The larger gathering spaces of the screen porch and kitchen are located on the north side of the home, shaded from the sun on hot summer days. The two rooms become one large gathering space by opening a large sliding door that doubles the space.

Imprint Architecture and Design, LLC

imprintarchitecture.com • (651) 440-0334 or (651) 295-5623

Design team: Jeremy Imhoff, AIA; Sara Imhoff, AIA; Jordan Magistad





Photos: Shelter Architecture

Lakeside Retreat | New Build

Initially a getaway cabin, this idyllic lake property was transformed into the family's year-round home. The architect situated the program spaces on the property based on their relationship to the surrounding trees, the lake, and the approach from the road. Spaces were oriented to connect to the lake through existing view corridors through the surrounding trees.

The largest volume and the heart of the home, with living, kitchen, and dining, feels both grand and welcoming. Its most striking feature is its custom-engineered steel and its Douglas fir trusses. Interior spaces are connected to the outdoors through a massive multipanel sliding door that opens onto a large screened porch. A floor-to-ceiling pocket door separates the light-filled pantry from the open kitchen when desired. The garage wing—a two-story structure with plywood-clad utility spaces below for a workshop, indoor play area, and boat storage—creates a visual buffer from the neighboring home. The home utilizes geothermal heating and cooling and structural insulated panel (SIP) roof construction. Natural wood tones and handmade tile alongside thoughtful architectural details and elegant light fixtures create a retreat that blends seamlessly with the ever-changing canopy of trees just beyond the dwelling's walls.

Shelter Architecture

shelterarchitecture.com • (612) 870-4081

Design team: Greg Elsner, AIA; Beth Halstenson, AIA; Jackie Colpeart; Jennifer Wojtysiak, Assoc. AIA; Greg Mackenzie; Jackie Millea, AIA; John Barbour, FAIA; Kurt Gough, Assoc. AIA





Photos: Page Photography

New Craftsman on the Block | New Build

The client wanted their new home to fit its St. Paul Highland Park neighborhood and integrate the architecture with the beautiful wooded site. The Prairie Style design cues of the owners' original 1904 house were carried forward through the use of art glass windows, millwork, cabinetry, and defined spaces.

The house is small enough to feel comfortable for the couple yet large enough for family gatherings. The main floor includes a guest bedroom that allows for one-level living in the future. Sustainability and energy efficiency were important goals for the project, which incorporates SIP wall panels, a concrete insulation sandwich foundation, and well-placed, energy-efficient windows that promote cross ventilation and reduce the need for air-conditioning. Low-pitched hip roofs with broad overhangs, an interplay of stucco and siding, and strong horizontal lines break down the scale of the house. Ample windows provide daylighting and are captured in trim bands along the second floor. By detaching the garage and shop, the house gained windows for daylighting, views, and ventilation on all sides. The exterior features a front porch to welcome the walkable neighborhood. A sunroom, deck with pergola, and upper balcony extend the living spaces into the outdoors.

McMonigal Architects

mcmonigal.com • (612) 331-1244

Design team: Rosemary McMonigal, FAIA; Kyle Thrapp, AIA; Nick Dellwo; Phil Hofstad



Home of the Month
Selected Project



St. Anthony Midcentury Revival | Remodel

This unique architect-designed midcentury home in St. Paul has been cleverly reinvented for the 21st century. The basement was converted to the first permitted accessory dwelling unit (ADU) in the city of St. Paul, complete with a separate entrance off the side yard. The new main entrance remains in the back of the home, leaving the beautiful, wooded front yard as a quiet haven in the city, but it now opens up to a generous mudroom and pantry leading into the new kitchen. The main living spaces gained larger windows to the heavily gardened front yard. The original fireplace was removed to allow unobstructed views and more access to natural light. The space now highlights and strengthens the original features of the home, including the beautiful, high wood ceilings and clerestory windows. The new addition and remodeling take better advantage of the site by rotating and expanding the garage and adding a second floor above it, creating a welcoming entry court and second-floor primary bedroom, home office, and screened porch perched in the treetops.



Photos: Corey Gaffner

Albertsson Hansen Architecture

aharchitecture.com • (612) 823-0233

Design team: Christine Albertsson, AIA; Mark Tambornino, AIA, Katie Loecken, AIA; Sarah Hughes





Photos: Spacecrafting

Creekside | Remodel

The owners of this vintage home on Minnehaha Creek in Edina wanted a stronger link between the existing house and the backyard, which is bordered by the creek. The remodel transitioned a playroom into a family room with a kitchenette and doors that open to the backyard. Walkout access was added to allow for easy movement to the new patio, plunge pool, and pool house beyond.

Along with the pool house addition and plunge pool, the outdoor space includes a stone terrace and graceful stair access to the property below. The pool house is designed to be used in almost all of Minnesota's seasons; the pull-down screens keep the summer bugs away and the fireplace provides warmth in the spring and fall. The little house serves as an outdoor family room complete with TV, storage cabinetry, and buffet space for easy entertaining.

The remodeled terrace includes an outdoor shower, new access to the lower level of the home, and a storage closet built into the house foundation for kayaks, paddles, and life jackets. The low form of the roof provides privacy for the pool area while still allowing for daylight and creek views for the immediate neighbors.

Rehkamp Larson Architects

rehkamplarson.com • (612) 285-7275

Design team: Mark Larson, AIA; Ryan Bicek, AIA



Architect: Charles R. Stinson

Builder: Stinson Builders

Photographer: Paul Crosby



LELCH

AUDIO // VISUAL

SHADES | LIGHTING DESIGN | INTEGRATED HOME SYSTEMS

LELCHAV.COM

612-353-5087

Home of the Month
Selected Project



Photos: VONDELINDE

Bluebird | Remodel & Addition

A major fire that did substantial damage to an existing home gave the homeowners an opportunity to build a home from the ground up that supported their lifestyle. The result is a bold, surprising design that explores unique materiality without sacrificing efficient operation.

The design incorporates a butterfly roof that is in balance with the existing low-slung structure. A band of transom windows below each end of the roofline supports that balance and

carries through the intentional exploration of materiality and color. Massing feels elegant and purposeful, increasing the square footage without pushing beyond the original footprint. Moments where the facade pushes and pulls give dynamism and relief to the overall shape of the home.

The home is serious at times and playful at others. It was designed for a family with a unique design perspective and personality that loves space and light. Art is important and was a driving force of many of the design decisions. Bluebird emerged from the ashes with a concept to reach for the daylight, to open to the outside, to create space made from organic rich materials that flowed with ease, and to beautifully hold an eclectic life full of eclectic things.

CityDeskStudio

citydeskstudio.com • (651) 644-1106

Design team: Ben Awes, AIA; Perri Kinsman; Sophie Olund; Sam Awes





INSPIRED



Hygge Hus, Wyoming



BY NATURE

Balsam Lake Cabin, Minnesota



Humlebi House | New Build

The homeowner wanted a new modern home on a recently subdivided city lot with a careful use of space, sensible room sizes, built-ins, and connections to its surroundings. As a longtime resident of this neighborhood, the owner wanted his house to be at home amid the eclectic housing stock found in the area. Early site studies led to an L-shaped building plan that gives the house a presence on the street corner while also preserving open space for a large private backyard.

Stylistic references for this home came from midcentury modern and contemporary Scandinavian architecture. The exterior is primarily clad in black-painted lap siding, but the vertical siding at the inset entry porches is stained a bright yellow to welcome visitors inside.

The exterior walls are composed of structural insulated panels (SIPs), creating a strong thermal envelope and reducing construction time. The flat roof has solar panels for energy production and a skylight to flood the stairwell with light. Light-reflective white walls and fir cabinets and trim work on the interior balance one another to create a space that is both bright and cozy. Several wall spaces in the home were conceived of as gallery walls, allowing for a changing display of art inside the home.



Photos: Corey Gaffner

SALA Architects

salaarc.com • (612) 379-3037

Design team: Jody McGuire, AIA; Katie Leaf, AIA; Sarah Gastler



Home of the Month
Selected Project



Arden Hills Regeneration | Remodel

A remodel of this 1969 home replaced dated formal spaces with a modern, high-function layout. The open-concept great room is composed of the living, dining, and kitchen spaces. Once located in the triangular corner of the house, the kitchen has been reconfigured into a more efficient L-shaped layout. The close proximity to the deck and yard allows for modern entertaining.



The original Chicago brick fireplace in the living room—beloved by the homeowners—was carefully salvaged and reinstalled as the new fireplace surround, flanked by built-in walnut cabinets and bookshelves. The former entry sunroom is transformed into a nursery, which is now adjacent to the primary bedroom. By swapping the sliding exterior doors for a large picture window—salvaged from the kitchen—and installing double pocket doors, the room is private for its current use as a nursery yet can easily convert to an office in the future. What was formerly a floor plan full of outdated, redundant spaces is now a carefully appointed great room and primary suite for a modern way of living. This home now serves the growing needs of a young family from newborn life to aging in place. A truly forever home.

Mitlyng Design

mitlyngdesign.com • (612) 200-9941

Design team: Katie Loecken, AIA; Ashley Mitlyng, AIA; Mary Begley



Home of the Month
Selected Project



Lake Harriet Residence | New Build

The homeowners are a custom home builder and his wife who wanted a smaller, modern home on Queen Avenue within walking distance of Lake Harriet.

Goals for the home were to balance traditional and modern design tastes, create sophisticated, right-sized interiors with room for entertaining, flexible spaces for returning kids and visiting family, abundant natural light, and a strong connection between indoors and out.

The design team responded to the owners' goals and the site with a sleek modern home that deftly balances a gable form and a flat-roofed form. Floor-to-ceiling windows, sliding glass doors, and a skylight fill the interiors with light while a front patio functions as a modern "porch," creating a natural connection to the street.

Finished with variegated brick that carries through from exterior to interior, a discreet, dark gray steel roof, and a green roof planted with a tapestry of colorful sedum, the home brings an exciting modern sensibility to the neighborhood.

PKA Architecture

pkarch.com • (612) 353-4920

Design team: Ted Martin, AIA; Gabriel Keller, Assoc. AIA; Brent Nelson, AIA; Sarah St. Louis, Assoc. AIA





Full Circle | Remodel & Addition

The owner had been looking for a unique property near her hometown of Bemidji when a memorable one from her childhood was listed for sale. Originally drawn to the unique bowed roof and the retro character of the interior, the owner knew a remodel and addition was needed to double the interior spaces and make it a hub for family activity she imagined.

To add a primary suite to the main level without sacrificing views or negatively affecting the scale and shape of the existing structure, a stacked bedroom and bath suite was created adjacent to the existing cabin in a compact, flat-roofed form. A slight rotation toward the lake and floor-to-ceiling window units visually distinguishes the addition from the existing structure. Replacing the existing hand-built trusses with new engineered trusses that maintained the exterior bow and adding an arch to the ceiling profile gained two additional feet of height at the center of the living space.

A fireplace with a full-height chimney anchors the living space design. Surrounding the new hearth is white oak cabinetry and wide-plank floors throughout. An inlay of pink granite flagstone and reused brass screens in a custom see-through buffet nod to the original. Matching cabinetry extends into the new primary suite as a closet system with a circular window seat.

SALA Architects

salaarc.com • (612) 379-3037

Design team: Bryan Anderson, AIA; Jessica Wilder; Matt Wingard, AIA; Ross Davidson





Photos: Farm Kid Studios

The Zen of Aging in Place | Remodel

The clients in this modest-sized, older home in south Minneapolis were experiencing a major aging-in-place dilemma. The wife had developed a mobility issue but otherwise was healthy and wanted to continue living in their home of many years. To address that need, the architect added a main-level, accessible bathroom with a zero-entry, walk-in shower. The new bathroom is spacious, functional, and modern.

The clients' love of gardening is reflected in their beautiful landscaping, but the existing home did not provide any views or easy access to the backyard. Additionally, the tiny kitchen had almost no storage or counter space and needed updating. The design team created a bright and open kitchen space that allows the couple to cook and dine together while enjoying the views of the stunning backyard landscape.

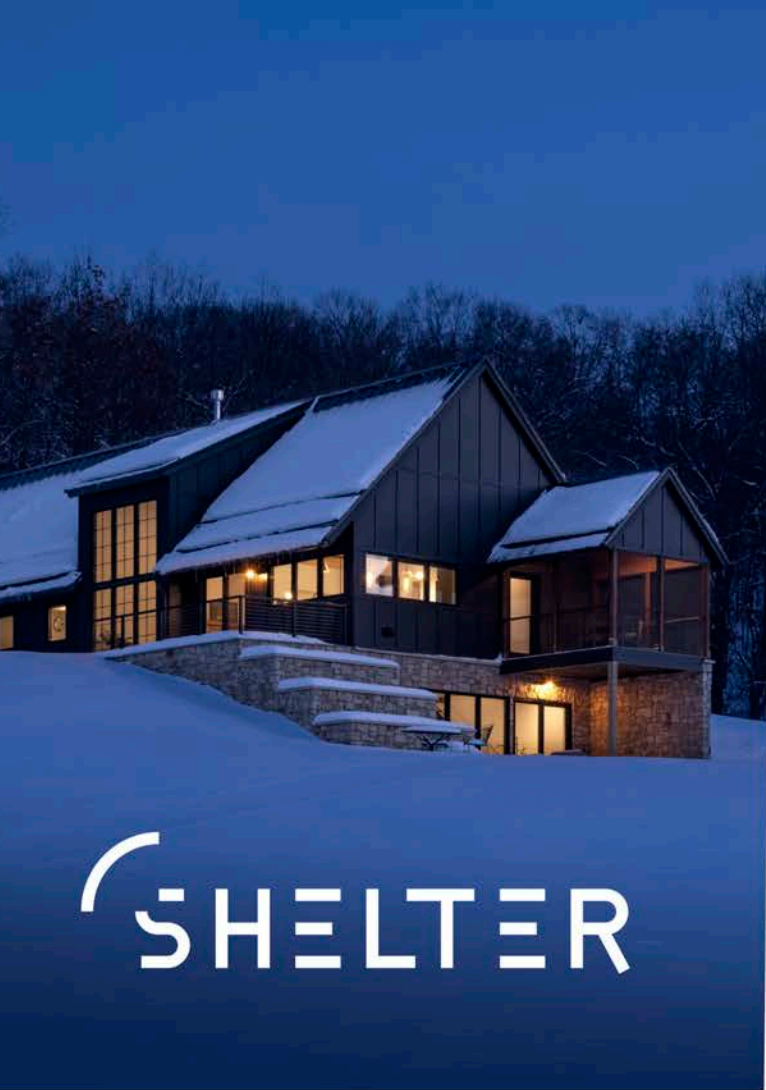
The new interior is bright and airy and lets the outside in through three backyard-facing glass doors. The clients' outdoor space at the back of the home is their sanctuary and a lovely place to sit and enjoy the seasons. This major transformation of the main floor will allow the owners to continue to enjoy their home for many years to come.

Joy Architecture + Interior Design

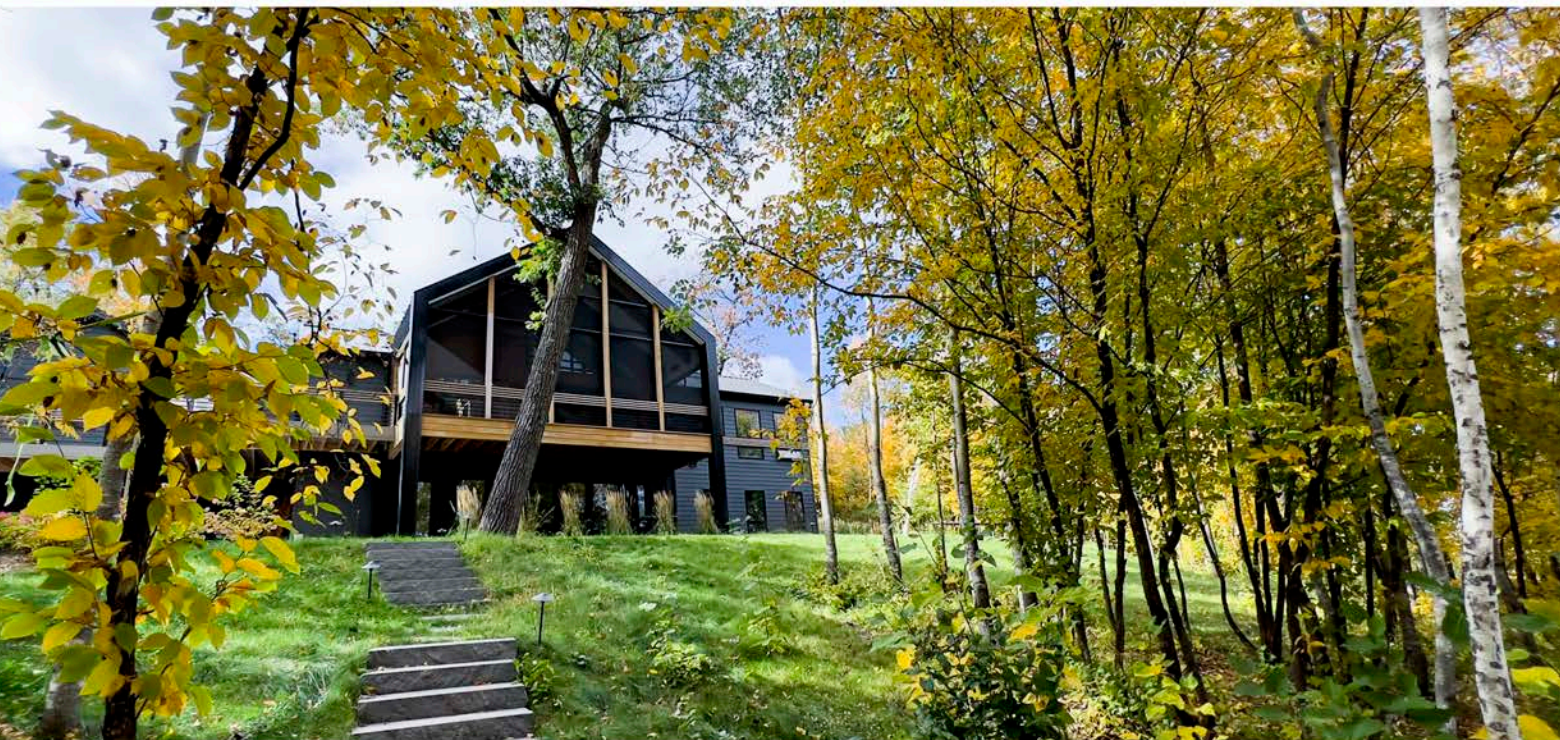
joyarchitecture.com • (612) 616-9472

Design team: Joy Martin, AIA; Laura Cayere-King, Assoc. AIA





SHELTER



architecture + interior design

shelterarchitecture.com



VONDELINDE

Sunfish Lake Nordic Traditional | New Build

A family was relocating to a narrow lot that afforded wonderful views of the lake and is home to many old-growth white pines. Charged with maximizing the views while preserving the mature pines, the design team developed a thoughtfully composed home in the traditional Norwegian vernacular. Positioning the home on the site to take advantage of the potential for a walkout basement, coupled with strict local height requirements, required a room-in-attic approach to the second-level spaces.

On the upper level, the ceiling starts at shoulder height in certain locations and slopes upward. This compression of space creates a sense of intimacy and a nostalgic association with traditional notions of “home.” Significant care was taken to design around the site’s large white pines. The project is composed of patterns found in Scandinavian architecture, including detailed timber columns, brackets, and trim on the exterior and in multiple areas throughout the interior, including the front entry stair—the highlight of the design.



Harris Kenjar Photography

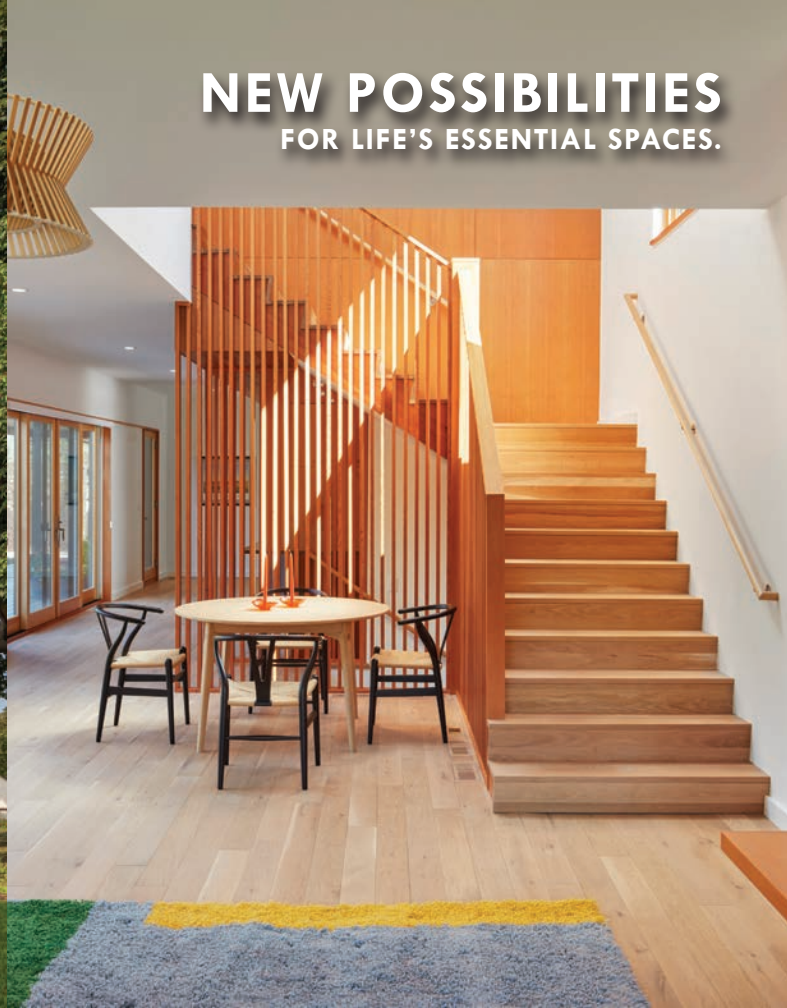
PLAAD

plaadoffice.com • info@plaadoffice.com
Design team: Mark Stankey, AIA; Matt Byers, AIA; Anne McDonald (Anne McDonald Design)



NEW POSSIBILITIES

FOR LIFE'S ESSENTIAL SPACES.



SALA

SALA ARCHITECTS

At SALA Architects, our process of collaborating with our clients ensures that we bring it all together, together.

LEARN MORE AT SALAARC.COM

Home of the Month
Selected Project



Pop the Top | Remodel & Addition

A young family of four hired the architecture firm to “pop the top” of their tiny one-story bungalow from 1924. The clients loved their neighborhood but were bursting at the seams during the start of the COVID-19 pandemic and a work-from-home lifestyle.

Key to this project was capitalizing on an odd “missing tooth” of space on the south side of the existing home. Construction costs were minimized by not disrupting the first-floor layout.

No new foundation walls were needed because the new stair floor framing could span from either side of the existing “wings.” The new second level begins with a sunny common space for playing instruments and other shared activities. This space connects a large family bathroom, three bedrooms, and a laundry room. During the partial-demolition process, the owners looked at their worn and dated kitchen and decided to remodel this space as part of the project. The team embarked on an expedited design process to make the kitchen as vibrant and fresh as the exterior. Dark wood lower cabinets, light wood upper cabinets, and a blue tile backsplash combine for a fun space to gather, while a south-facing square window brings light to a new breakfast nook.

Christopher Strom Architects

christopherstrom.com • hello@christopherstrom.com
Design team: Christopher Strom, AIA; Eric Johnson, AIA



CHRISTOPHER STROM
ARCHITECTS



christopherstrom.com

In collaboration with John Kraemer & Sons,
InUnison Design, and Bunkers & Associates



Cottagewood Gables | New Build

Built to last centuries, this remarkable home in Deephaven has a classic form and timeless details. Resilient materials such as natural hand-troweled stucco, structural solid-wood eave brackets, copper gutters and flashing details, cobblestone chimneys, gas lanterns, and solid wood windows all create an authentic palette that grounds the home and creates a strong sense of place.



Two gabled forms with a courtyard in between create a classic base for the design. The living and dining rooms have a bank of windows with views east to the courtyard and west through the screen porch to the pool. The house's interior combines rustic and refined details. Reclaimed timbers and stained wood ceilings balance the profiled painted trim and traditional wood windows, aged brass faucets are paired with stone sinks, and cobblestone floors share the room with wallpaper. Bespoke stone, plaster, and cabinetry finishes highlight the entire main level, designed both for everyday living and for entertaining. Every space and relationship in this home was well considered, from the initial design through refinement, material selection, and sourcing, until final realization by a craftsman. The care the builders, design team, and homeowners have taken in creating this one-of-a-kind residence is evident in its immediate charm and lasting impression.

Rehkamp Larson Architects

rehkamplarson.com • (612) 285-7275

Design team: Jean Rehkamp Larson, AIA; Angela Taffe Wingate, Assoc. AIA; John Kirk





Compact Conversion | Remodel

Rather than relocating, a family of four in Minnetonka chose to remodel their tight house, which was dated with a cramped kitchen not well suited for entertaining. The new layout utilizes every corner of this small home to maximize storage, improve flow, and connect spaces, creating a modern midcentury vibe.

The original kitchen space became the dining room, featuring new plywood wall paneling that cascades down and becomes a space-saving bench. A coffee bar with bright blue penny tiles is hidden in the opening between the living room and kitchen, and a narrow island with seating at one end allows the focus of the kitchen to be on the sliding glass doors to the deck. A window was also added to the left of the stove to bring in additional light. A wall of deep storage along the garage wall provides a place for coats, boots, and overflow pantry/kitchen storage. Small design touches throughout the rest of the main floor complete the project, including a new handrail for the stairs, an updated wood mantel above the fireplace, and new wood flooring in the sunken living room.



Photos: Wing (Ta) Ho

Albertsson Hansen Architecture

aharchitecture.com • (612) 823-0233

Design team: Christine Albertsson, AIA; Jim Kuipers, Assoc. AIA



Questions to Ask Your Architect

Are you ready to hire an architect? Learn what questions will inform your search for a design partner. Asking the right questions before hiring an architect for your dream home project is essential for avoiding headaches down the road. You want to select an architect who makes you feel comfortable and understands your goals, and one whose work style aligns with how you plan to proceed.



Photo: Ryan Siemens

What are the biggest design challenges and considerations of my project? The architect will likely have insights or knowledge beyond what you have explored. They should have ideas for how to rise to those challenges and embrace all project considerations.

How much time do I need to commit to providing feedback?

Do you want to be involved in the tiniest details, or do you plan to be relatively hands-off? How does this fit in with the architect's timeline and workflow? Being honest up front about what kind of client you are in this regard—which includes when you're best able to meet and how—and learning what the architect expects from you will keep things running smoothly. This conversation will also aid in setting a timeline and budget for the project overall.

What will you show me along the way to explain the project? Can you expect renderings or drawings

before the construction process starts? Don't be afraid to ask for sketches, alternative designs, samples, or showroom visits. Ask what impact modifications or alternatives will have on both the budget and timeline for your project.

Who is on my team? Unless you choose a solo practitioner, there are several people at an architecture firm who will contribute to your project. Who will you be dealing with directly? Is it the same person who is designing your project? Ask for introductions!

How will you handle the unexpected? The years of the pandemic have created challenges with the supply chain, as well as for staffing and how architects connect with clients. Your architect should be able to tell you how they have adapted their work style, and how they deal with the unexpected in any project.

Do you have references? Speaking to an architect's references—typically past clients and contractor partners—will reassure you that you've found a reputable architect and give you insight into their work style and approach.

What's your fee structure, and what sort of costs can I expect?



Photo: Farm Kid Studios

Make sure your architect is open with you about any additional costs that may accrue outside of the contract. You may also learn more about your architect's track record regarding cost estimating and completing projects within budget by talking to their references.

What's your relationship with the contractor? Does the architect have a contractor they partner with regularly? If not, will they help you identify the right contractor for your project? Will you be expected to deal with the contractor directly, or will the architect work with them?

Ready to start interviewing architects for your home design project?

Begin your search by going to aia-mn.org/firm-directory, where you can filter search results by building type, firm location, and more.

CABINETS, FURNITURE, WINDOWS, LIGHTING, SIDING, PLUMBING & MORE



DWELL44
MODERN DESIGN SHOWROOM

DWELL44.COM

612.425.4444

INFO@DWELL44.COM

4317 EXCELSIOR BLVD, ST LOUIS PARK



builder: ridge construction | photographer: vondeinde

inspired spaces

CITYDESKSTUDIO
citydeskstudio.com | 651.644.1106

