

2025 Home of the Month Look Book

AIA Minnesota


**The Minnesota
Star Tribune**



Photo: Corey Gaffer Photography. See **page 47** for home details.

MODERN REDISCOVERED



BLUEBIRD | Photography by Vondelinde

CITYDESKSTUDIO
architecture + design

citydeskstudio.com

RIDGE
CONSTRUCTION
LLC.

ridgeconstructionllc.com

MODERN OUTLOOK

PKA ARCHITECTURE | PKARCH.COM | 612.353.4920



PKA.



PKA ARCHITECTURE | HAGSTROM BUILDER | AUNE FERNANDEZ LANDSCAPE ARCHITECTS | DESIGNS BY MARTINA INTERIOR DESIGN
SCOTT AMUNDSON PHOTOGRAPHY



CITYSCAPE
PAINTING PERFECTED

Raise Your Expectations



Exacting Precision

Award-winning interior and exterior painting, staining, and enameling services.

30+ Years of Experience

More than 17,000 Minnesota homes painted, with jobs of every size and scale.

High Stakes Specialists

Tight timeline and no room for error? That's our bread and butter.

Call our friendly team today!
We'd love to be your trusted partner.

(952) 469-5901
or visit cityscapepainting.com





“When you have the ability to create and sculpt environments that take advantage of light, you certainly want to do that. Marvin gives us the tools to create these wonderful spaces.”

— *Charlie Simmons,*
Principal, Charlie & Co. Design Ltd

Imagine endless possibilities

When realizing a unique vision for your clients, turn to Marvin Ultimate windows and doors for their design flexibility, flawless detailing, and premium performance. Their handcrafted beauty is immediately evident, and their impact is powerful across the architectural spectrum. The result of relentless refinement, these are premium products with nearly endless possibilities for your most ambitious projects.

For expert tools, resources, and support, visit **marvin.com/pros**.

ULTIMATE
MARVIN SIGNATURE® COLLECTION

Home of the Month Look Book

Find Inspiration on Every Page



Photo: Brian Bierkstedt | Hybrid Studio. See [page 11](#) for home details.

[AIA Minnesota](#) is pleased to present a look book featuring architect-designed homes throughout the Midwest region that showcase the innovation and skill of Minnesota architects. The projects on the following pages were each submitted for the 2025 Home of the Month program, a 22-year collaboration between AIA Minnesota and the [Star Tribune](#) that highlights a different architect-designed home each month in the Sunday Variety section.

From among the pool of 35 projects submitted this year, a panel of experts selected 12 that best represent the pinnacle of architect-client collaboration and demonstrate the problem-solving, creative design, and project management skills that architects bring to a home. These 12 distinguished homes are marked with a red corner ribbon. Watch for the projects to be featured over the next 12 months in the *Star Tribune*, both in print and online.

We hope you'll find inspiration for ways to make your own living spaces more comfortable, efficient, and beautiful. Contact information for each project's design team is included. Enjoy the beauty found in the following pages, and let inspiration find you.

The Minnesota Star Tribune

The *Minnesota Star Tribune* is Minnesota's #1 local source for news, information, and community events. Throughout its 150-year history, the *Star Tribune's* focus has remained the same: delivering more of what matters to Minnesota. All day. Every day.

AIA Minnesota

The American Institute of Architects (AIA) Minnesota is the professional association for architects in Minnesota. As a state component of AIA National, with three local chapters, AIA Minnesota has nearly 2,300 members. AIA Minnesota produces a regional convention, publishes the digital monthly [ENTER](#), lobbies on behalf of the profession, and more.

Projects by Architecture Firm

Use the table of contents below to browse projects by the firm that designed them. The 12 selected Homes of the Month are bolded.

Albertsson Hansen Architecture and Interior Design.	12 , 26, 38, 47
Anchor Builders.	13
Christopher Strom Architects.	50
HMM Architects	30
Imprint Architecture and Design	37 , 46
Kell Architects	35
Lundin Architects	43
McMonigal Architects	17, 32, 45
Mitlyng Design.	22, 42
North Arrow Architecture	20
PAF Architecture.	34
PKA Architecture.	18 , 52
Quartersawn Design Build.	19
Rehkamp Larson Architects	14, 28, 36, 44
SALA Architects	16, 29 , 40
TEA2 Architects.	10, 24 , 31, 51
Unfold Architecture	11

Home of the Month Event

Tonight's Panelists



Jeremy Imhoff, AIA

Jeremy is a principal architect and co-owner at Stillwater-based [Imprint Architecture + Design](#). Jeremy's broad range of prolific work includes single-family residences, including both of his homes in Seattle, WA, and Stillwater. Read more about Imprint's project "Little Cabin in the Woods" on page 37.



Jody McGuire, AIA

Jody is a principal architect at [SALA Architects](#) and an associate professor of practice at the University of Minnesota. She is a past recipient of both the AIA Minnesota [Emerging Talent Award](#) and [Young Architect Award](#). Read more about her project "Humblebi House" on page 40.



Carl Olson, AIA

Carl founded his firm [North Arrow Architecture](#) in 2021. He has designed a wide array of award-winning projects, from country estates and historic lake cottages to simple kitchens with tight budgets. Read more about his project "Orono Residence" on page 20.



**Tonight's Moderator:
Laurie Junker**

Laurie is a Minneapolis-based writer who covers home design, architecture, and trends for local and national publications. She has written many of the "Home of the Month" articles for the *Star Tribune*. You can find her online at lauriejunker.com.

H E N N E P I N M A D E

Thank you to tonight's event sponsor, [Hennepin Made](#). Hennepin Made is an artisan glass lighting brand driven by the desire to build something more sustainable and transformative than the makers before.



NOR-SON
CUSTOM BUILDERS

NO ONE BUILDS LIKE NOR-SON

Nor-SonCustomBuilders.com | 612-216-1800

MN LIC.#BC001969



Lakeview Shingle Style | New Build

When the owners acquired this rare lake lot on historic Manitou Island in White Bear Lake, they knew that they wanted a home for modern living with a traditional feel that fit into the historic nature of the neighborhood. The resulting home is a modern classic, a seamless blend of comfort, beauty, and environmental responsibility.

Respecting the island's character, the design features a "fan" shape, spreading out toward the lake. This maximizes space within setbacks and offers stunning lake views from key living areas. The "seven gables" design required 400 unique truss profiles and meticulous detailing. Full-length porches and a shingle-style exterior create a classic feel, and a quaint front porch and a spacious lakeside porch are perfect for grilling, dining, and relaxing. Open floor plans ensure light flows throughout the home, offering glimpses of other rooms and the surrounding beauty. Transoms above windows and an all-white interior

maximize natural light, creating a sense of airiness despite the extensive porches. White millwork and details add depth and texture while remaining light and inviting, contrasting beautifully with the long stretches of windows and breathtaking views.

TEA2 Architects

tea2architects.com • (612) 929-2800

Design team: Dan Nepp, AIA; Tyler Hillger, AIA





Theodore Wirth Modern | New Build

Tucked into the hillside at the edge of a park, this home for a young, active family is deeply tied to its natural surroundings. The steep site required creative design solutions: the garage level was fixed for street access, while the main living spaces needed to connect with the park-like rear yard, a story above. Instead of a typical walkout, the design terraces with the slope, making what appears from the street as three stories read as two from the back. Visitors ascend a generous stair, hidden behind a stone wall, to reach the main level, where the house opens around a sunlit courtyard.

The layout is arranged around a central garden, with kitchen and living spaces in distinct wings. Expansive glass dissolves the boundary between inside and out. A sculptural stair, flooded with natural light, connects all levels, anchoring the home. Warm, durable materials echo the wooded site. The lower level hosts a sauna, gym, and entertainment area, while the top floor holds serene bedrooms. The home rises with the land, designed for a lifestyle

that blends structure and surprise, solitude and community.

Unfold Architecture

unfoldarchitecture.com • hello@unfoldarchitecture.com

Design team: Mike Gray, AIA; Greg Vose, AIA; Jack Peterson, AIA



Home of the Month
Selected Project



Photos: Corey Gaffer Photography

Lake Pepin Country House | Remodel

Nestled in the historic village of Frontenac, this remodel transformed a 1940s home with a 1960s addition to maximize natural light and embrace views of the Mississippi River. Originally dark and compartmentalized, the home featured low ceilings and a kitchen disconnected from its remarkable setting.

To reimagine the space, the architecture team removed the wall between the kitchen and dining room, creating clear sightlines from the living room to the river beyond. The kitchen was expanded by incorporating part of the adjacent three-season porch, making room for a generous island and a walk-in pantry. This allowed the exterior walls to be free of upper cabinets, framing expansive views and drawing in natural light. Beams help organize spaces and soften transitions between varying ceiling heights. New windows further brighten the interiors and highlight the home's horizontal views. Open shelving improves accessibility and lets light filter between the kitchen and pantry, reinforcing an open, airy feel. Outside, a new deck and pergola form a gracious gesture toward the river, echoing the grand porches of nearby 1800s mansions. The result is a home that blends historic charm with modern functionality, perfectly attuned to its landscape and legacy.

Albertsson Hansen Architecture and Interior Design

aharchitecture.com • (612) 823-0233

Design team: Christine Albertsson, AIA; Ian McLellan, AIA; Meg Lundquist, Assoc. AIA





"After" Photos: Spacecrafting

Midcentury Japandi | Remodel

The owners of this Minnetonka residence loved their private hilltop lot, but the house itself was dark, dated, and poorly suited to their lifestyle. The remodel's main design objectives focused on entertainment spaces, one-story living, natural light, and views of the surrounding greenery.

To realize this vision, the home was stripped to the foundation, with only a few exterior walls left standing—allowing for a complete transformation. Composite siding on the exterior provides the look of wood with minimal maintenance. Inside, vaulted ceilings and transom windows brighten the main level, while carefully placed indirect lighting brings warmth and comfort.

To reduce its environmental impact while enhancing modern living, the home features a high-efficiency electric heat pump and an induction cooktop. Additionally, the home is equipped with car charging ports, supporting the transition to electric vehicles and promoting a greener

lifestyle. Built on a foundation of trust, the result is a home that beautifully reflects the clients' vision and exceeds expectations.

Anchor Builders

anchorbuildersmn.com • (952) 285-9373

Architect: David Walbolt, AIA





Photos: Scott Amundson

Green Lake Cottage | New Build

After countless summers in their two-bedroom lakeside cottage, the owners were ready for more space to better accommodate their children and grandchildren for long summer days at the lake. Working with their existing narrow lot, a new year-round cottage was envisioned with one-floor living for them, and with plenty of bedrooms upstairs for family and friends as well as a game room and bunk space below for the grandkids.

The house is a quintessential cottage with a simple steep pitched gable and dormers. The low eave height keeps the overall scale tied to history while the shed dormers allow for surprisingly generous space inside. A sauna and outdoor shower in the corner of the detached garage are within an easy run to the lake for a cold plunge under the stars. An open corner porch welcomes you up to the house, where you arrive in an entry that leads to a view through the public spaces of kitchen, dining, and living and out to the lake beyond. Similar to a classic bungalow floor plan, one half of the house contains the primary living spaces and the other half is private—in this case, the primary suite. A sunroom with built-in benches is the spot for morning coffee or to watch a Midwest thunderstorm slide across the lake. Grilling up dinner for a crowd is an easy pleasure on the lakeside covered patio. This classic cottage lives large, creating a destination for generations of family to gather at the lake.

Rehkamp Larson Architects

rehkamplarson.com • (612) 285-7275

Design team: Jean Rehkamp Larson, AIA; Anders Matney, AIA



Builder: Dovetail
Interiors: Brooke Voss
Landscape: Savanna Designs
Photo: Scott Amundson



REHKAMP LARSON ARCHITECTS INC.
rehkamplarson.com 612.285.7275



Glacial Lake House | New Build

The owners of this new lake home in western Minnesota had collected years of memories in its thermally inefficient and structurally deficient predecessor. Now in retirement, with more time to spend at the lake, the owners sought to replace the structure with a year-round home that lived as casually as before, but with improved function and efficiency. The result is a flexible and accessible open plan totaling 1,750 square feet with cooking and gathering at its center, under a canopy of asymmetric light monitors. Oversized pocket doors can be closed to create up to three private sleeping rooms, supported by two shared baths.

It was important to the owners to retain and incorporate certain elements of the existing cabin, such as an original built-in sideboard of aged pine now residing along the dining area wall. On the exterior, replacing an exposed deck, a lakeside cantilevered overhang of ten feet creates an outdoor room for large family dinners or quiet sunsets.



Photos: Troy Thies

SALA Architects

salaarc.com • (612) 379-3037

Design team: Bryan Anderson, AIA; Max Ouellette-Howitz, AIA





Photos: Page Photography

Ten Trees | New Build

For decades, the homeowner reimagined life at the lake, which she nicknamed “Ten Trees.” The architect collaborated with the homeowner to transform the lake home and its natural setting into a year-round sanctuary.

The home’s shallow footprint, designed to maximize light and lake views, offers glimpses of the water from most rooms.

Super-insulation and high-performance windows ensure year-round comfort. The basement stair is a straight-run with longer treads, shorter risers, and a handrail on each side for easier use. A dumbwaiter elevator allows for easily moving items to and from the basement. Sustainability is woven into the home: Recycled materials reduced environmental impact, low-water landscaping minimizes resource use, and solar panel readiness offers the potential for future energy independence. A landscape architect designed extensive landscaping, another passion of the owner. The result is a nature-filled, park-like setting.

This is a home designed to grow old with its owner, a testament to meticulous planning and a deep connection to the land. Thoughtfully crafted details ensure longevity, while native plantings and preserved trees creates a harmonious environment, blurring the lines between the house and the natural world.

McMonigal Architects

mcmonigal.com • (612) 331-1244

Design team: Rosemary McMonigal, FAIA; Kyle Thrapp, AIA; Nick Dellwo



Home of the Month
Selected Project



Photos: Spacecrafting

Prärie Hus | New Build

The homeowners are design aficionados who had lived in a small, midcentury modern home in Golden Valley. One of the homeowners is a custom residential builder who had previously collaborated with the architecture firm on the renovation of that home. So when the couple purchased this lot in White Oaks Savanna, they collaborated again to design a spacious, single-level modern home nestled into the prairie. They wanted

the new home to reflect their German and Nordic heritage, support aging in place and future multigenerational living, and align with their passion for sustainability. The design emphasizes energy efficiency and incorporates an insulated concrete form (ICF) foundation, structural insulated panels (SIP), and solar panels.

Challenges included a subterranean gas line, watershed district restrictions, community design standards, and wetland preservation guidelines. In response, the design team created a discreet, wood-clad home inspired by European and Scandinavian farmhouses, oriented for daylight, privacy, and solar efficiency. Four pavilions house distinct functions, while a tall grade forms a natural entry court. Outdoor living areas and a raised garden extend the living space into the prairie, celebrating both landscape and lifestyle.

PKA Architecture

pkarch.com • (612) 353-4920

Design team: Ashley Vanden Bosch, AIA; Anna Beth Gunderson, Assoc. AIA; Brent Nelson, AIA





"After" Photos: Rau + Barber

River View Revival | Remodel & Addition

This Cape Cod home sits on an elevated site overlooking the Mississippi River. The natural topography provides a strong visual connection to the river while maintaining privacy. The homeowners, a young couple expecting their first child, sought to enhance this connection and improve comfort and efficiency—especially on the upper level. The original home had limited river views due to small windows and a compact “doghouse” dormer. Replacing it with a larger shed dormer opened up expansive views of the river and St. Paul bluffs. Additional side windows were widened to frame longer views down River Road. A new picture window on the main level was scaled to match existing openings, bringing in more natural light and reinforcing the home’s connection to its setting. To address seasonal temperature swings in the future nursery, targeted HVAC improvements and upgraded insulation were added. This carefully crafted renovation demonstrates how subtle design moves can dramatically improve a home’s comfort, efficiency, and relationship to its surroundings.



AFTER



BEFORE

Quartersawn Design Build

quartersawndesignbuild.com • (612) 208-1727

Design team: Ali Awad, AIA; Austin Kratochwill; Peter Anderson; Chauncey Keepers; Zach Berbig



Home of the Month
Selected Project



Photos: Spacecrafting

Orono Residence | Remodel & Addition

After living in a former farmhouse for over 15 years, the homeowners were ready for a change. But after searching for new homes and lots, nothing matched the beauty of their wooded property, so they decided to reimagine their existing home. Meetings with the architect, landscape architect, and builder sparked an exciting whole-house renovation focused on creating more beauty, comfort, efficiency, and functionality.

Design goals included capturing natural light and scenic views, reorienting the front entry, creating a new attached garage, and transforming the old garage into a pool courtyard with a guest casita. The primary suite was reimaged to include a vaulted ceiling, pool views, a spa-like bath, sauna, and larger closet. To meet these goals, the architect introduced a welcoming front porch and a stone-clad addition for a skylit office and cozy den. A strategic excavation under the family room allowed for a new lower-level garage, freeing space above for a light-filled kitchen and walk-out patio. By bringing the land up to the level of the old garage, the architect was able to design a new swimming pool and a comfortable guest casita. A breezeway of sliding glass doors connects the casita to the main house, framing views of the pool and woods beyond.

North Arrow Architecture

northarrowarch.com • (612) 850-2469

Architect: Carl Olson, AIA



Architecture by Christopher Strom Architects / Interiors by Ruth Johnson

Spaces with soul



SCOTT AMUNDSON PHOTOGRAPHY

Tel. 612-384-0486

ruthjohnsoninteriors.com

 ruth johnson interiors



Rambler Revised | Remodel

This project breathes new life into a midcentury rambler, seamlessly blending functionality and aesthetics to craft a modern haven for a growing family. Originally a modest dwelling, the rambler underwent a significant expansion in the 1980s. While the square footage doubled, awkward spaces remained. The homeowner's desire to renovate the kitchen sparked a holistic approach to the entire home.

The once-isolated kitchen was transformed into the heart of the house. Walls were strategically removed, creating a light-filled dining area with panoramic views. The new kitchen echoes both midcentury nostalgia and contemporary chic, featuring locally crafted mosaic tiles and walnut cabinets. Underutilized spaces throughout the home were reimaged. A redundant staircase was removed, allowing for a larger bathroom and hallway that catered to the family's needs. Sustainability practices were also prioritized. Locally sourced materials minimized transportation emissions and radiant floor heating reduces energy consumption.



Photos: Cook & Kin

Mitlyng Design

mitlyngdesign.com • (612) 200-9941

Design team: Katie Loecken, AIA; Ashley Mitlyng, AIA; Eden Garton, AIA





Kolbe's VistaLuxe® Collection offers clean lines and narrow frames for maximum views. The VistaLuxe® AL LINE's floor-to-ceiling openings both connect and transcend the defined indoor and outdoor spaces.

KOLBE Gallery
TWIN CITIES

7545 Washington Ave. S | Edina, MN
kolbegallerytwincities.com | 866.460.4403

Kolbe Gallery® Twin Cities is your local Kolbe® window and door expert, offering various resources to help guide your project from planning through installation. Our knowledgeable staff and extensive showroom will help you specify the right products for your next project.

KOLBE
WINDOWS & DOORS

Home of the Month
Selected Project



Photos: TEA2 Architects

Modern Scandinavian Retreat | New Build

Avid lovers of the north woods, the homeowners were thrilled to find an island property in northern Wisconsin, connected to the mainland by a causeway. The island's dramatic topography features a prominent, forested hill offering sweeping views to the north and south. Their vision was clear: create a home nestled into the spruce and fir canopy, respectfully integrated into the landscape and barely visible from the lake. The siting carefully thinned the old-growth forest and followed the island's natural ridgeline, creating a home that recedes into its setting while framing long, layered views.

The house consists of three simple gabled forms—a “living” block, garage/mud entry, and owner’s suite—linked by transparent connectors and arranged to embrace a north-facing terrace. Inspired by the clients’ Finnish heritage, the design evokes a Scandinavian hilltop village, with a lakeside sauna and guest house (*see next page*) linked by woodland paths. Materials like dark stone, stained cedar, and zinc roofs create a timeless, recessive palette. Inside, a glass-enclosed living hall immerses communal spaces in filtered light and forest views, while upper-level bedrooms are tucked into rooflines articulated by crisp dormers, maintaining simplicity, clarity, and connection to nature throughout.

TEA2 Architects

tea2architects.com • (612) 929-2800

Design team: Dan Nepp, AIA; Tom Van De Weghe





Modern Scandinavian Cabin | New Build

Located on an island in northern Wisconsin, this Scandinavian-inspired lake home was designed to embrace sweeping views of the lake and the surrounding old-growth forest. The owners envisioned an open, airy, contemporary retreat with large sliding doors to welcome in summer breezes and panoramic views, along with a connected screen porch to offer protection from mosquitoes while still enjoying the outdoors.

Rooted in their Finnish ancestry, the owners wanted to foster a sense of *mökkielämä*—a cottage lifestyle centered around relaxation, sauna, swimming, and time with family and friends. The design pairs a simple, gabled wood-and-glass house with a small, barn-red sauna, linked by a covered breezeway that frames views of the lake and forest for arriving

guests. Cedar wall shingles, board-and-batten siding, a zinc standing-seam roof, and bluestone terraces echo the timeless simplicity of traditional Finnish summer homes. Inside, an open plan connects the wood-and-timber kitchen, dining, and living areas to the lake beyond. A modern fireplace, lakeside porch, and light-filled upper-level bedrooms further reflect the owners' connection to the landscape.

TEA2 Architects

tea2architects.com • (612) 929-2800

Design team: Dan Nepp, AIA; Tom Van De Weghe





Lakeview Hideaway | New Build

This retreat home was built on the site of a 1940s cabin that had been in the family for generations. The private lake in eastern Wisconsin is shared by family and friends, united by previous generations who brought them to this place. The new cabin captures the views and connection to the site while comfortably accommodating up to 12 people.

The unique site—a shared parcel of land with a public accessway adjacent—presented design challenges. Entry points

were carefully planned to remain discreet from the public-facing side while still being easily accessible. Much care was taken to control sightlines and maintain privacy from neighboring cabins, which sit quite close on either side.

Scaled appropriately to honor the original cabin, the new structure respects the history of the lake while offering modern amenities. Traditional rooflines and windows connect past to present, while thoughtful detailing brings a fresh vision. A screened porch with fold-up windows opens to a private lakeside patio. Inside, wrap-around windows frame lake views and tall pines, blending daily life with the natural surroundings. Even utility spaces like the mudroom-laundry hybrid are designed for functionality, comfort, and ease of use.

Albertsson Hansen Architecture and Interior Design

aharchitecture.com • (612) 823-0233

Design team: Ian McLellan, AIA; Christine Albertsson, AIA; Madison Bose, Assoc. AIA





Builder: Ronel Builders / Photography: Bethany Birnie



ARMATAGE NEST ADDITION + REMODEL

Originally built in 1946, this South Minneapolis home in the Armatage neighborhood underwent its first addition in the early 2000s. As the children have grown and the family hosts more gatherings and events, they needed a space that better supports great food, cocktails, music, and time together for both adults and kids. The renovation focuses on expanding the heart of the home with a much larger, more functional kitchen with a generous island, replacing the previous galley layout. Enhanced connections to the outdoors and patio create a seamless indoor-outdoor experience, perfect for summer entertaining.

The bright, open kitchen and dining space are designed for both daily life and celebrations. The kitchen is anchored by a dramatic stove wall clad in handcrafted Zellige tile, adding depth and texture, while a bold chevron carbon-black accent wall enhances the overall warmth and character of the space.

The renovation also includes a new mudroom, providing a practical yet stylish landing space for shoes, coats, and everyday essentials, along with a wine fridge, shelving for a coffee station, and sunny spots for the family cat, Alex.

Design Team:

Joy Martin, AIA
Allison Landers
Kayla Holzhauer



JOY+

architecture // interior design

4325 Upton Avenue S, Linden Hills
Minneapolis + Charleston
hello@joyarchitecture.com



Photos: Alyssa Lee Photography

Kenwood Refresh | Remodel

A family with three growing teenagers needed more functionality in their stately 1931 Kenwood, Minneapolis, home. The formal front entrance wasn't part of the daily routine—everyone came in through the tight back entrance off the garage, which had become a pile of shoes. The kitchen felt cramped and closed off, and a previous remodel with a barrel-vaulted ceiling seemed out of step with the home's original style.

The renovation took cues from the home's original details and trim. To solve the back entry's lack of storage, space for a mudroom and large closet was carved from underused cabinetry in the family room across the hall. Now, coats and shoes can be tucked away just steps from the back door.

The kitchen was gutted and realigned, with the barrel vault removed. Marble countertops and backsplash bring light and movement, and a carefully sized island provides seating and storage without crowding circulation. A new pantry adds function, while a work desk moved to the family room frees up more kitchen space. Upstairs, the owner's suite was reimagined with full-height ceilings, improved layout, and a walk-in closet with an island. Even the kids' bathroom gained elbow room thanks to smart reconfiguring. This gracious, nearly century-old home is ready for the next 100 years.

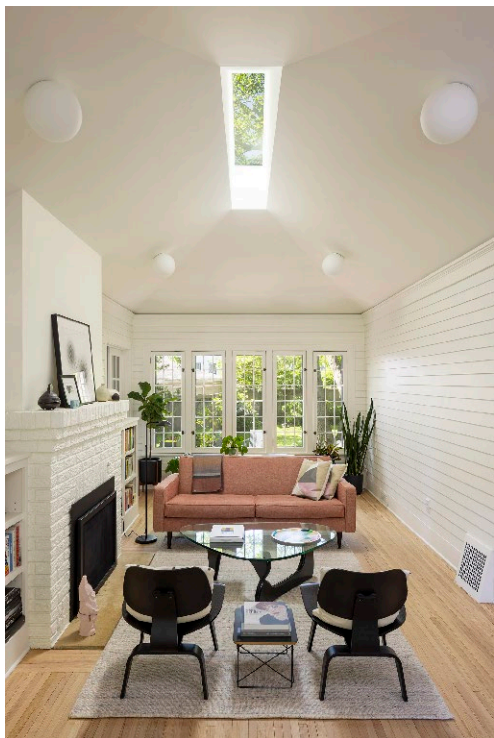
Rehkamp Larson Architects

rehkamplarson.com • (612) 285-7275

Design team: Mark Larson, AIA; Laurel Johnston, AIA



Home of the Month
Selected Project



Photos: Troy Thies

Hip Joint | Remodel

Covid prompted the owners of this century-old, single-level bungalow to reassess both its shortcomings and potential. On the shortcomings list were inefficient closets, a tiny, windowless bathroom with a chipped tub, and signs of structural issues in the roof.

To address the bathroom, the rotting window and old tub were removed. The window was replaced with an insulated, frosted-glass unit that matched the original divided-lites, improving both daylight and privacy. A large walk-in shower was rotated away from the window by reclaiming an inefficient guest room closet. A wall-mounted toilet and relocated linen cabinet maximized space. The sacrificed guest closet became a full wall of custom cabinetry with a Murphy bed and flexible workspace. The primary bedroom got a paneled headboard wall and new full-height wardrobe, doubling storage. Initially not part of the plan, a failing roof-to-wall connection demanded attention. Removing the flat ceiling allowed for new rafters, ties, and a vaulted ceiling with a skylight—adding cost, but delivering daily light and long-term resilience.



SALA Architects

salaarc.com • (612) 379-3037
Architect: Bryan Anderson, AIA



Photos: Spacecrafting

Dupont Home + ADU | New Build

This home on Dupont Avenue in Minneapolis began as a triplex concept on a smaller lot nearby. The original intent was to create a microcommunity: a space where parents could age in place, teenagers finish high school, and a grandparent stay close. But after several design iterations, it became clear the lot was too small. A pandemic-induced pause turned out to be an opportunity—six months later, a larger lot became available that

better suited the vision. Some goals had shifted. Rather than three individual units, the revised plan called for a single home with two wings—one for the kids, one for the adults—plus an accessory dwelling unit (ADU) in the rear yard.

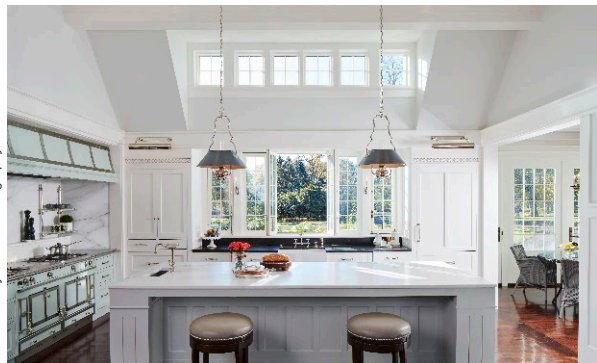
Sustainability remained central. The clients hoped to go all-electric and off-grid using 53 rooftop solar panels and battery storage. Though technical limitations at the time made that impossible, R-25 ICF walls, triple-pane windows, and rooftop solar brought the home near net zero. There was a desire to be both a forthrightly modern building and a sensitive neighbor. The concept of dueling shed roofs allows the main roof to reduce in scale as it approaches the neighbor to the south, while the secondary roof on the north side does the same as it approaches the sidewalk. Influences ranged from Japanese engawa and sugi ban siding to California and Scandinavian modernism, all coalescing into a cohesive, future-focused home.

HMM Architects

hmmarch.com • mathias@hmmarch.com

Design team: Mathias Mortenson, AIA; David Markie, Assoc. AIA; Norah Mortenson





Photos: Corey Gaffer Photography

Nantucket Re-Creation | Remodel & Addition

After 20 years in their 1960s rambler, the homeowners sought a dramatic transformation that would blend timeless shingle-style charm with modern functionality. The renovation reimagined the home's core to improve natural light, circulation, and connection to the surrounding landscape.

The redesign relocated the kitchen and stairs, introduced broad windows and clerestory dormers, and added a new 1½-story volume with a steeply pitched roof. This allowed for a more functional three-car garage and a spacious second-floor owners' suite, complete with a private sitting room and fireplace, a custom-detailed primary bath, and second-floor laundry. Taller ceilings and dormers give the space an airy, refined quality. Classic architectural elements pair with personalized touches like custom cabinetry, oval windows, and detailed wood flooring. The kitchen features intricate millwork and expansive windows, with a French window opening to a courtyard for indoor-outdoor connectivity. Outdoors, stone terraces, lush gardens, and a pool house with a double-sided hearth create a retreat-like atmosphere. This project is a testament to how a dated rambler can be completely reimagined into an inviting, light-filled, and beautifully crafted home.

TEA2 Architects

tea2architects.com • (612) 929-2800

Design team: Dan Nepp, AIA; Petra Schwartz, AIA; Ann Carlson-Yunga; Janet Lederle; Tom Henningsen





Photos: Page Photography

JR Montague House | Remodel

This stately 1913 Classic Revival house in the Lynnhurst Historic District, designed by architect Glenn Saxton, features balanced proportions, a large hipped roof, lapped wood siding, and a full-width columned front porch. Inside, much of the original rich woodwork and built-ins remain intact. In an era of teardowns on generous lots, this owner has steadfastly nurtured the house. The residence needed improvement to make it habitable for contemporary family living.

On the first floor, where many original materials remain, updates were made subtly: air conditioning and lighting were added, leaks and flashings repaired, and millwork rejuvenated. A previous rear addition was lightly updated, including new windows. The second floor was fully remodeled to improve livability. Insulation, systems, and plaster walls were installed; salvaged doors, hardware, and millwork were reused. New windows have authentic proportions and muntin patterns, requiring review and approval by the Minneapolis Heritage Preservation Commission. A narrow porch was removed to expand a bedroom and bath. The new primary bath, inspired by luxury hotels, features refined finishes and spa-like comfort. Closets were reworked, and the stair hall was restored with a new coffered ceiling. New HVAC was fully integrated. The rebuilt porch follows historic photos—an effort that reflects the owner's belief in preserving architectural heritage.

McMonigal Architects

mcmonigal.com • (612) 331-1244

Design team: Rosemary McMonigal, FAIA; Kyle Thrapp AIA; Nick Dellwo





Streeter Custom Builder | PKA Architecture | Spacecrafting Photography



— EXPAND YOUR — POSSIBILITIES

For homes that deserve nothing less than extraordinary, choose the contemporary style of Pella® products. Stunning modern features and sleek, minimal profiles bring expansive views and beautiful inspiration to your home. Our windows and doors are exquisitely detailed and made-to-order **just for you.**



PELLA WINDOW & DOOR SHOWROOMS

PLYMOUTH | 13810 24TH AVENUE NORTH | 952-915-6080
WOODBURY | 7730 HUDSON ROAD | 651-704-9939

pella.com

© 2025 Pella Corporation



"After" Photos: Jeff Cords Photography

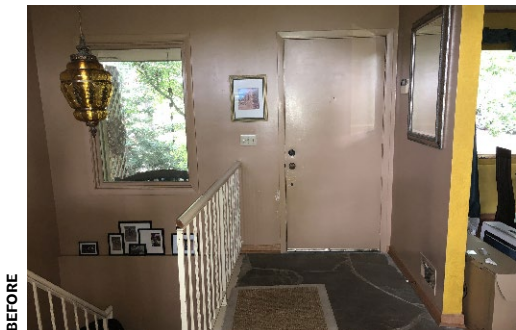
Lakeside Reimagined | Remodel

The owners of this lakeside home lived there for nearly 20 years, raising a family and running a home business from the basement. With their children off to college and maintenance issues growing, they desired a thorough update. The home's interior was dark and dated—small windows, partition walls, and a heavily wooded lot limited natural light. A midcentury wood wall clock and a unique screen-like headboard found in the home inspired a fresh interior character that aligned with the home's existing lines.

The remodel opened the living, kitchen, and dining areas; reconfigured the powder room, laundry, and primary suite for efficiency; and transformed children's rooms into guest suites. New windows were added to brighten spaces and improve views. Light white oak floors, cabinetry, and custom screen walls unify the interiors, filtering daylight and offering display space. The result is a bright, open, midcentury-inspired home with renewed connection to nature and the lake.



AFTER



BEFORE

PAF Architecture

pafarc.com • (612) 226-6064

Design team: Patrick Freet, AIA; Alice Schimunek



Home of the Month
Selected Project



Photos: Troy Thies

Ironranger | New Build

Perched on the shore of the clearest rocky waters of the Iron Range sits a new cabin as refreshing as the Northern Minnesota woods. It serves as a contemporary family retreat, meticulously designed to harmonize with its natural surroundings. The primary design focus was on simplicity, maintenance efficiency, and accentuating the beauty of the landscape.

The strategic placement of the cabin, sauna, and future shed enhance the landscape while ensuring privacy and incorporating elements of universal design. Inside the compact footprint, three sleeping rooms accommodate up to eight individuals, with seamless accessibility and spacious circulation pathways inspired by meditative principles. The unassuming, windowless entry, clad in wood, invites guests to declutter their minds upon arrival. Inside the foyer, a narrow aperture draws their gaze to a distant view of the lake, guiding them toward the gathering space flooded with daylight. Drawing inspiration from the surrounding environment, the materials mirror textures found in nature. The exterior features a vertical steel siding pattern resembling the nearby trees, while the interior is characterized by serene views framed by carefully positioned windows. Whether seeking social engagement or quiet contemplation, the family can immerse themselves in the tranquil beauty of the landscape, enveloped by the sights, sounds, and scents of the wilderness.

Kell Architects

kellarchitects.com • (612) 234-5484

Design team: Meghan Kell, AIA; Dan Wallace, AIA





Pepin Bluff | New Build

Weekends at their barnlike cabin near Lake Pepin inspired the homeowners to settle permanently on a Wisconsin bluff. The design team opted to keep the existing barn as a guest space with a garage below and craft a new home closer to the bluff edge. The existing gambrel form ensures privacy from the road, while salvaged snow fence cladding and exposed concrete foundation with integral insulation characterize the new home's sustainable design.

The new house's front door opens into a generous mudroom, which serves as a single-story link connecting the original barn/guesthouse, main house, and a workshop/boat storage outbuilding. The main floor includes an open kitchen, dining and living rooms, and porch. The design features Scandinavian details, including the green-and-blue color palette, plus nods to the barn as seen in galvanized steel siding. A petite soapstone stove and high gable windows grace the living room. A sculptural staircase leads to a cozy loft retreat, and the walkout basement houses additional amenities.



Photos: Scott Amundson

Rehkamp Larson Architects

rehkamplarson.com • (612) 285-7275

Design team: Mark Larson, AIA; Anders Matney, AIA



Home of the Month
Selected Project



Little Cabin in the Woods | New Build

Nestled into the woods in Ely, this 1,100-square-foot cabin was designed for a couple and their three boys. Travellers by nature, they longed for a permanent getaway—a home base between road trips. The wife, who spent summers at her grandmother’s northern cabin, and the husband, a Duluth college grad, found a wooded lot in 2021 that spoke to their shared love of the North.

The half “A” design was inspired by picturesque old A-frame cabins. The design allows for snow to shed to the side of the home while also protecting the entrance from the elements. The modest cabin includes two bedrooms, one bath, and a sleeping loft. A vaulted living space combines kitchen, dining, and lounge areas, opening into a retractable screened porch with another loft above. Large windows bring in light and views of the forest canopy, while the porch focuses attention on a ravine below. Sited on a rocky ledge to reduce clearing, the slab-on-grade cabin features radiant heat, energy-efficient windows, and a wood stove. Durable materials like whitewashed cedar siding and a standing seam roof keep maintenance low. The design blends tradition with personal touches: his wood stove, her picture window seat, and a shared dream: a circular wood-fired hot tub.



home while also protecting the entrance from the elements. The modest cabin includes two bedrooms, one bath, and a sleeping loft. A vaulted living space combines kitchen, dining, and lounge areas, opening into a retractable screened porch with another loft above. Large windows bring in light and views of the forest canopy, while the porch focuses attention on a ravine below. Sited on a rocky ledge to reduce clearing, the slab-on-grade cabin features radiant heat, energy-efficient windows, and a wood stove. Durable materials like whitewashed cedar siding and a standing seam roof keep maintenance low. The design blends tradition with personal touches: his wood stove, her picture window seat, and a shared dream: a circular wood-fired hot tub.

Imprint Architecture + Design

imprintarchitecture.com • (651) 440-0334

Design team: Jeremy Imhoff, AIA; Sara Imhoff, AIA; Patrick Moe, AIA





Prairie Retreat | New Build

This prairie retreat was designed for a Twin Cities family seeking a peaceful escape for nature, woodworking, and gardening. Nestled on a diverse property with lake frontage, wetlands, and wooded trails, the home invites hiking, birdwatching, and quiet time with loved ones. The design draws from the surrounding landscape, with natural materials, earthy colors, and thoughtful details throughout.



Visitors arrive via a winding driveway through prairie grass, leading to a welcoming porch and a generous screened room with sweeping views. A simple, slate-tiled stair hall connects key spaces and features vertical paneling, fir beams, and custom Shaker-inspired furniture. The great room—organized around a stone fireplace—includes kitchen, dining, and living areas beneath a vaulted Douglas fir ceiling. A custom oak harvest table anchors the space. Earthy green cabinetry, soapstone countertops, and expansive windows link the interior to the prairie. A multi-use barn provides room for woodworking, gardening, and guests, complementing the home with both utility and rustic charm.

Albertsson Hansen Architecture and Interior Design

aharchitecture.com • (612) 823-0233

Design team: Christine Albertsson, AIA; Mark Tambornino, AIA; Oliver Batzli, Assoc. AIA; Meg Lundquist, Assoc. AIA; Sarah Hughes, Allied ASID





The Original Suspended Fireplace from Focus.

952-546-6162
AllSeasonsFire.com

6801 Wayzata Boulevard,
St. Louis Park, MN 55426



Thoughtful Design. Delightful Living.

Albertsson Hansen Architecture and Interior Design
612.823.0233 | aharchitecture.com



Home of the Month
Selected Project



Humlebi House | New Build

This new modern home is thoughtfully stitched into the Minneapolis urban fabric. The homeowner—a weaver and longtime neighborhood resident—wanted a home that balanced thoughtful design, sensible space, and connection to the outdoors. Built on a newly subdivided city lot, the house follows an “L”-shaped plan that creates a strong street presence while preserving a large private rear yard. A linear axis links the sidewalk, entry, and back deck, forming an organizational spine through both house and landscape.

The design takes cues from midcentury modern and contemporary Scandinavian architecture, with black-painted lap siding, bright yellow-stained entry porches, and a clean, warm interior palette of white walls and fir cabinetry. Structural insulated panels and rooftop solar contribute to energy efficiency. Completed, the house is admired and well woven into the fabric of the neighborhood.



Photos: Corey Gaffer Photography

SALA Architects

salaarc.com • (612) 379-3037

Design team: Jody McGuire, AIA; Sarah Gastler, Assoc. AIA; Katie Leaf, AIA





Photos: Scott Amundson

Wisdom Woods | New Build

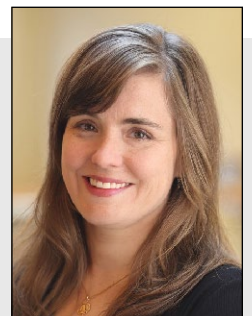
Nestled between two lakes in northwestern Wisconsin, this 80-acre site offers a serene retreat from the demands of daily life. The homeowners envisioned a lake home that would serve as a destination for family and friends. They wanted this family retreat to be an intriguing destination, arrived upon after emerging from the red pine and aspen woods, providing quiet repose that frames the natural beauty of the surroundings and creates a sense of rejuvenation through time spent in communion with the outdoors.

The design balances a cabin-like sensibility with a refined material palette of wood, steel, and stone. The home opens with a modest entry that invites quiet arrival before expanding into a vaulted living space. At one end, full-height glazing offers stunning lake views; at the other, a cozy stone inglenook fireplace provides a warm, intimate retreat. Though generous in scale, the home's natural material palette and complementary niches support a sense of coziness and connection, which help foster community, strengthen relationships, and create a clarity of focus and renewed creative energy. Thoughtfully integrated outdoor spaces—including a bee garden, vegetable beds with potting shed, an amphitheater, and hiking trails—extend the home's embrace of nature.

TEA2 Architects

tea2architects.com • (612) 929-2800

Design team: Leffert Tigelaar, AIA; Ann Carlson-Yunga; Josh Winter; Tom Henningsen



Home of the Month
Selected Project



Photos: Cook & Kin

A Spanish Craftsman Reinvented | Remodel

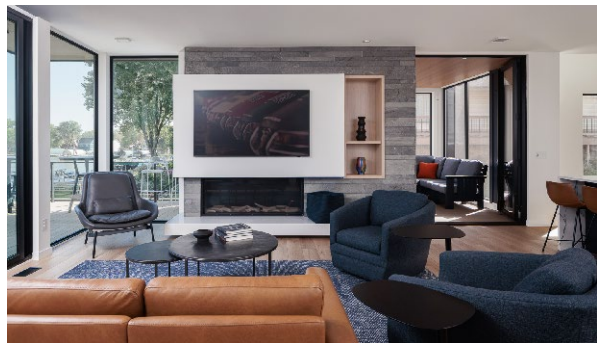
This 1920s Spanish Craftsman still had its original charm but lacked functionality. While the owners loved the historic millwork and ideal location, the main level felt compartmentalized and outdated. This remodel relocated the kitchen to the center of the home, where it connects seamlessly with the dining room. A handcrafted mosaic tile backsplash provides a striking focal point, while a mix of new stained and painted cabinetry echoes the original details and adds modern storage. A new archway complements existing ones, reinforcing a defining architectural element. Reimagined spaces bring fresh utility: the former kitchen now serves as a cozy TV lounge and updated powder room, while the breakfast nook was converted into a light-filled office with a glass pocket door. The entryway was opened up with a built-in bench and handmade terracotta tile. The transformation brings clarity, comfort, and cohesion to the main level, honoring the home's heritage while supporting the needs of modern living.



Mitlyng Design

mitlyngdesign.com • (612) 200-9941

Design team: Ashley Mitlyng, AIA; Katie Loecken, AIA; Eden Garton, AIA



Photos: Farm Kid Studios

Velero Azul | New Build

This home is an architectural response to a unique lakeside setting. Nestled on a narrow lot with a 22-foot grade drop from street to water and neighboring homes close by, the design navigates slope, privacy, and space while forging a deep connection to the lake.

Inspired by nautical forms, the exterior is defined by parallel white planes—architectural “sails”—that guide views to the water

and shield interiors from adjacent properties. Blue-toned volumes, balconies, and open stairs evoke a fleet poised by the shore. Entry into the home is crafted as a journey: a descending breezeway frames glimpses of the lake, while a zen garden offers quiet reflection before stepping inside.

Once inside, views of the lake immediately unfold. Large windows extend sightlines through the home, while white walls, light-toned woods, and soft, natural light create a bright, welcoming atmosphere. On the main floor, living spaces wrap around a central core, anchored by a gray stone fireplace and opening to ship deck-like balconies. Upstairs, the primary suite is a glass-walled retreat with an integrated office and blue-tiled bath. The lake level offers summer-ready living, and a guest suite above the garage connects to a roof deck with panoramic views. This is a home shaped by light, water, and architectural craft.

Lundin Architects

lundinarchitects.com • (612) 616-7015

Design team: Richard C. Lundin II, AIA; Jhna Lundin





Photos: Scott Amundson

River Bluff Modern | New Build

The homeowners wanted to create a home that took advantage of the beautiful river bluff site and landscape around them, prioritizing continuous river views and privacy. A central kitchen, dining, and indoor-outdoor living area were the core of the design, catering to one-level living for aging-in-place while still providing plenty of space for an expanding family.

Overcoming site challenges, including steep slopes and zoning constraints, the design embraces a rich material palette of stone, dark and light wood, and metal. Large overhangs and a flat roof accentuate the horizon, providing solar protection and maintaining proportionality. Two “getaways,” one for each homeowner for their creative pursuits, were integrated: One is a hidden warm, wood-paneled room serving as an office, music practice room, and library, and the other is an art studio tucked upstairs. A sculptural metal-and-wood staircase, the result of team collaboration, lets light into all levels. An outdoor covered patio off the kitchen/dining area features a dramatic four-panel pocketing glass patio door, retractable screens, and radiant heaters, enhancing indoor-outdoor living. Sustainability was prioritized through water management efforts, natural and durable materials, and energy-efficient design, ensuring a harmonious blend of modernity, comfort, and environmental consciousness throughout the home.

Rehkamp Larson Architects

rehkamplarson.com • (612) 285-7275

Design team: Mark Larson, AIA; Corey Pederson, AIA





Nestled in the Prairie | New Build

Set within a serene rural landscape of native prairie flowers, this home nestles into the land while preserving vistas and conserving wetlands. The single-level design helps in meeting two of the homeowners' primary goals: inside-outside living and aging in place. The open concept living-dining-kitchen is a vaulted central space with windows and doors embracing the southern light and prairie vistas. The kitchen has generous work space with full-height storage buffering adjacent laundry and bathroom. The owners are taller, so the kitchen island is higher

than typical to allow them to easily prep food and gather. Two bedrooms and an exercise room that can also serve as an additional bedroom provide sleeping and flexible spaces.

The turquoise blue accent color pops in interior tile backsplashes and painted accent walls, and the exterior siding and patio umbrella provide shade. Consistent materials and finishes extend through the house—painted gypsum board, maple millwork, black stone counters, and finished concrete floors. The southern patio has room for dining, BBQ, lounging, and a resistance swimming pool. Hobbies, tractor, equipment, classic car restoration, and storage have ample space in the nearby pole barn. Because the property borders a protected wetland to the south, the stunning and expansive prairie views will always be the home's backdrop.

McMonigal Architects

mcmonigal.com • (612) 331-1244

Design team: Rosemary McMonigal, FAIA; Kyle Thrapp, AIA; Nick Dellwo; Phil Hofstad





South Beach Lakehouse | New Build

Carefully curated, this modern two-story lakehouse on the shore of Crosslake reflects the homeowners' vision of a welcoming retreat rooted in memory. Drawing from old stone cabins, European streets, and modern urban design, the goal was to create a haven for family, friends, and good conversation.

Clean, modern gable rooflines are connected by a dramatic glass entry wall, offering a see-through view to the lake upon arrival. Though simple in appearance, this transparent

connection required structural steel and specialty windows. The upper-level floor floats in front of the glass, supported by exposed beams and wood decking, preserving the uninterrupted view. Stone masonry is the standout feature. The cladding wraps both exterior and interior walls, the fireplace, and chimney. The team collaborated closely with the stonemasons to curate color, size, and mortar finish, landing on a blend rich in personal meaning.

Inside, a warm, beachy palette of white oak, light concrete, and marine-inspired details sets the tone. Every space was designed with future generations in mind, making this a true legacy home shaped by collaboration, creativity, and care.

Imprint Architecture + Design

imprintarchitecture.com • (651) 440-0334

Design team: Jeremy Imhoff, AIA; Sara Imhoff, AIA; Patrick Moe, AIA



Home of the Month
Selected Project



Rochester Revival | Remodel

Transforming a 1948 Edwin Lundie-designed home in Rochester, this project revitalized the kitchen and dining room while honoring the home's traditional millwork. The primary challenge was modernizing the kitchen and dining area while respecting the home's original traditional millwork and architectural vocabulary. The existing layout was dark, crowded, and outdated, necessitating a thoughtful integration of contemporary needs with the original design ethos.

The design combined the originally separate kitchen and pantry into a single, expansive kitchen space and added a large multi-pane picture window—a signature feature of some of Lundie's designs—to enhance natural light and connect with the wooded backyard. A widened opening to the dining room created a more direct flow between the spaces. Original millwork details, such as cabinet door profiles, beaded tongue-and-groove paneling, island brackets, and window casings, were recreated and integrated into the new configuration. New millwork, including a cabinet with a beverage fridge, was integrated into the existing dining room niche. By preserving original details while updating the layout, the project successfully balanced historic character with modern functionality.

Albertsson Hansen Architecture and Interior Design

aharchitecture.com • (612) 823-0233

Design team: Todd Hansen, AIA; Jim Kuipers, Assoc. AIA





SALA ARCHITECTS

Creating architectural solutions that respond to your place in the world and enrich the activities of your life.

LEARN MORE AT SALAARC.COM

SALA



CUSTOM CRAFTED, MINNESOTA-MADE

CABINETS

BUILT FOR EVERYDAY LIVING



DWELL44
MODERN DESIGN SHOWROOM

612.425.4444 | DWELL44.COM
MONDAY - FRIDAY 10AM TO 5PM
4317 EXCELSIOR BLVD, ST LOUIS PARK, MN

WINDOWS, DOORS, CABINETS, COUNTERTOPS, FURNITURE, APPLIANCES, PLUMBING & LIGHTING FIXTURES, ARTWORK, & ACCESSORIES

Home of the Month
Selected Project



Photos: Scott Amundson

Two Doors Down | Remodel

Unlike most inquiries, this project began with a mailed letter. The clients had lived in their home for over 44 years and wanted an upgrade without leaving their close-knit community. As it happened, one client had a deep connection to the architect, who grew up two doors down—and whose grandfather had built the original home. Honoring that legacy, the homeowners wished to reimagine the 1980s structure while remaining on their lot.

Now retired, they had time to pursue a full renovation focused on aging in place. The original floor plan lacked openness, light, and pond views. A 14-foot addition enabled a reconfigured kitchen, improved sightlines, and added a mudroom, pantry, and office. Large windows and a skylight brought natural light and backyard views throughout the home. With essential functions on the main level and winter-weather improvements to the entry, the couple can now comfortably age in place, surrounded by neighbors, nature, and a home designed for the years ahead. This project demonstrates what is possible for existing, dated homes.

Christopher Strom Architects

christopherstrom.com • hello@christopherstrom.com

Design team: Chris Strom, AIA; John Bergford, AIA; Brett Biwer, Assoc. AIA





Modern English Arts & Crafts | New Build

Located on a unique historic lot along one of Minneapolis's iconic lakes, this project blends a modern interpretation of traditional style with its surrounding architectural fabric. Inspired by English Arts and Crafts, the home favors clarity of form, a restrained palette of white-painted brick, gray stone, and black millwork, and a contemporary yet timeless aesthetic.

The design maximizes its connection to the lake, offering singular, carefully framed views. Public spaces are arranged to emphasize hierarchy, with the living room as the dominant core. Flanked by smaller volumes and extending to a terrace, it creates a continuous flow toward the lake. A strong axial layout reinforces both movement and visual continuity. Above, the primary suite echoes this layout, centered for panoramic park and skyline views. Natural light plays a key role, with large windows, skylights, and clear sightlines brightening even the lower level. Subtle materials and consistent interior finishes provide cohesion, allowing furnishings and art to shine. Material choices are simple and cohesive, with consistent use of wood, plaster, flooring, and cabinetry throughout—creating a clean aesthetic that lets furnishings and art bring color and character. Framed outdoor spaces offer privacy while extending indoor living, celebrating the rare urban lake setting with both openness and retreat.



Photos: Spacecrafting

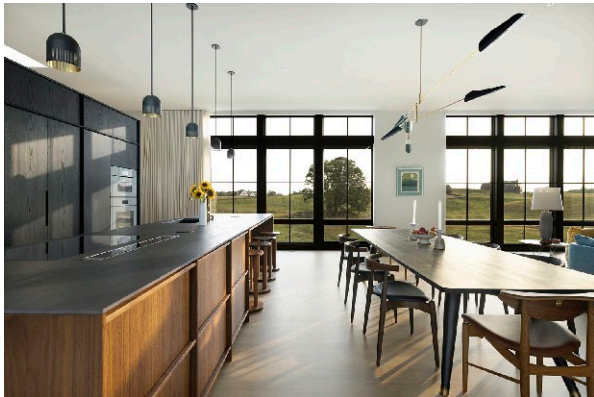
TEA2 Architects

tea2architects.com • (612) 929-2800

Design team: Dan Nepp, AIA; Tyler Hillger, AIA; Tyler Smith; Tom Henningsen



Home of the Month
Selected Project



Photos: Spacecrafting

Sandhill Residence | New Build

This modern home, designed for two creative entrepreneurs, is nestled into a sloped prairie site in an architecturally driven planned community outside of Stillwater. Inspired by midcentury modernism and a desire to live in harmony with nature, the design prioritizes landscape integration, energy performance, and long-term sustainability.

The loft-like floor plan and walk-out lower level take advantage of the topography while preserving neighboring views. Ten-foot ceilings, clerestory windows, and skylights bring in abundant natural light, while high-performance glazing controls heat and UV exposure. Operable windows encourage cross-ventilation, reducing the need for mechanical cooling. Lighting, HVAC, and window treatments are automated for energy efficiency. Sustainable materials anchor the home inside and out: Locally crafted blackened steel panels, oak flooring, and custom walnut cabinetry reflect the prairie palette, while the exterior's brick, corrugated metal, and cedar nod to the area's agricultural past. Native plantings support biodiversity and provide natural privacy.

PKA Architecture

pkarch.com • (612) 353-4920
Design team: Tammy Angaran, AIA; Kristine Anderson, Assoc. AIA; Corey Schmitt, AIA; Claire Bossert, AIA; Cynthia Burns, AIA; David Swan; Jason Briles





Builder: Ronel Builders / Photography: Bethany Birnie



JOY+

architecture // interior design

4325 Upton Avenue S, Linden Hills
Minneapolis + Charleston
hello@joyarchitecture.com

fremont *fun*

addition + remodel

This historic home in South Minneapolis needed updating to accommodate a family with three teenagers. Originally built in 1924, the woodwork and all the materials that were part of the renovation, were chosen to seamlessly blend the new with the old. The original millwork was replicated in both the remodeled rooms and in the new addition, ensuring the spaces look like they were part of the home from the start.

On the main floor, the original sunroom was converted to a much-needed mudroom with a closet and a powder room. Colorful wallpaper, cabinetry, and sink unify to fill the space with a sense of playfulness, add a layer of durability, and spark joy in the users. A new three-level addition includes a bedroom in the basement with full daylight windows, a new sunroom on the main floor with elevated views of the backyard, and a new primary suite on the second floor with a Juliette balcony facing the street. The other three existing second-floor bedrooms were reconfigured to create better circulation and more efficient use of the space. The laundry room was relocated from the basement to the second floor for added convenience.

Throughout the home, bold tiles, patterns, and fixtures reflect the owner's love of color and contrast. The client's decor style now seamlessly merges the historic and modern elements of their home, creating a cohesive space that perfectly suits their active, young family.

Design Team:

Joy Martin, AIA; Allison Landers; Kayla Holzhauser



Are You Ready to Hire an Architect?

Thinking of a new home or remodel?

Use these questions to get a deeper picture of your wants and needs.

When approaching a project as substantial—perhaps even scary—as building a new home or remodeling your current home, you want to make sure you get it right.

Before interviewing architects, those undertaking a new construction project should interview themselves. Below are some great questions to help you identify what you truly need and want out of a new home. You may even be surprised by what you learn!

Each person invested in the home is encouraged to answer these questions separately, then come together to discuss.

- **Describe your current home.** What do you like about it? What don't you like? What's missing?
- **What do you want most in a new home?**
- **What aspects of the land are important to you?** How do you want to use the outdoor space? What do you want to preserve on your site?
- **What is your lifestyle like?** Do you spend a lot of time at home? Do you entertain? Do you work at home? How has the pandemic shifted your activities and priorities, and how does that change your vision for your home?
- **Do you have ideas about the style of your new home?**

- **How much time and energy are you willing to invest in maintaining your new home?**
- **What materials and finishes are you most interested in using or not using?**
- **Is there anyone who would be using the home with a disability or other special needs?** Do you envision staying in this home long enough that age-in-place design needs to be considered?
- **How invested are you in including energy-efficient features?** Are there other aspects of sustainable design that are important to you, such as recycled materials, non-toxic finishes, mechanical systems, or renewable energy sources?
- **How soon do you want to be living in your new or remodeled home?** If remodeling, how much disruption in your life can you tolerate?



- **How involved do you wish to be in the process?**
- **What's your budget?** This amount needs to account for construction permits, fees, and utility work, as well as professional services and materials.

Once you've answered these questions, you should have a plan for your project that you can take to a design team. Taking the time to develop your vision and priorities will help ensure that your project accomplishes your goals.

Ready to hire an architect?

Visit AIA Minnesota's Architecture Firm Directory to find an architect near you: aia-mn.org/firm-directory

LET OUR KITCHENS *inspire yours*



Take your Sub-Zero, Wolf, and Cove luxury appliance suite to the next level at the newly remodeled Roth Living showroom. Inspiration awaits—schedule your visit today.

www.rothliving.com | 952.933.4428 | 11300 W 47th St, Minnetonka, Minnesota 55343





DAVID
HEIDE

design
studio

ARCHITECTURE ■ INTERIOR DESIGN ■ RESTORATION

DHDSSTUDIO.COM | INFO@DHDSSTUDIO.COM | 612.337.5060