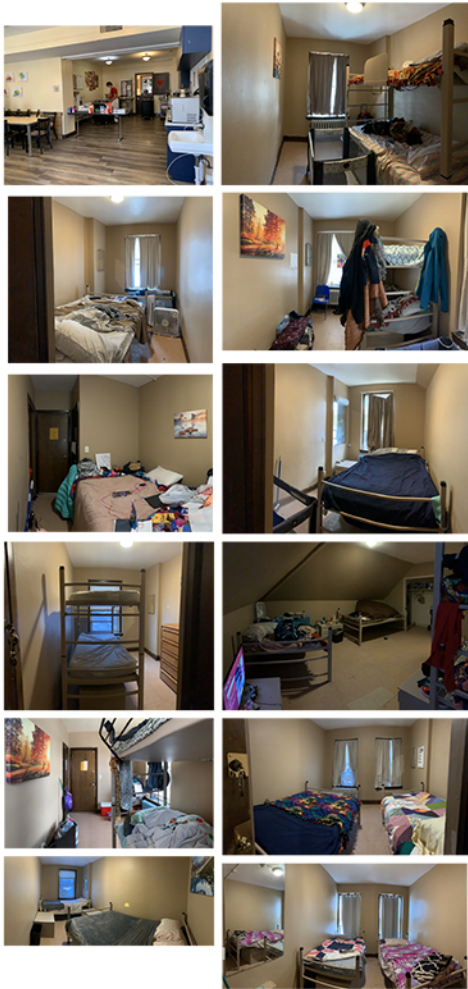


Applying Tiny Home concepts to make an Emergency Family Shelter feel and function like a home.

Haven Housing is a nonprofit that provides shelter and housing in north Minneapolis. They have 3 locations: Ascension Place, St. Anne's Place and Next Step Housing. Haven Housing supports women and children in their healing process and helps them to lead resilient lives.

MISSION: *to provide women and children in crisis or transition with a stable environment and the opportunity to explore options for their future.*

Existing Conditions



St. Anne's Place

St. Anne's family shelter operates in a 1940 former convent with 16 sleeping rooms in north Minneapolis. The shelter serves pregnant women or women-led families, each in a private room. Most rooms were constructed sparsely to shelter one person, a nun.

On the cusp of their 40th anniversary, Having Housing has paired with AIA's design charrette to reimagine dining and sleeping rooms (highlighted to the right) in a refreshing way that focuses on respite and healing. This team presents tiny home concepts to help St. Anne's Emergency Family Shelter feel and function like a home.

Profiles

These profiles are based on information and statistics provided by Haven Housing. The team assigned each family a room based on their family size- then determined the unique needs each group would require. This informed the furniture and spaces necessary for their room. This process lead to the design of 3 different concepts.

Leslie, Room 204
19, 2-year old son
Bed x2
Storage x2
Workspace
Play + Flex Space



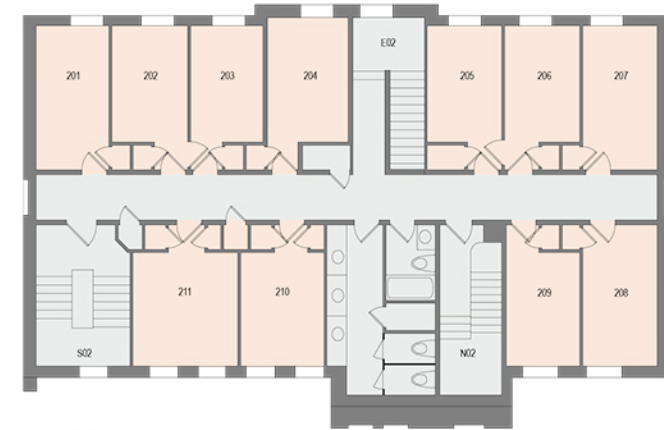
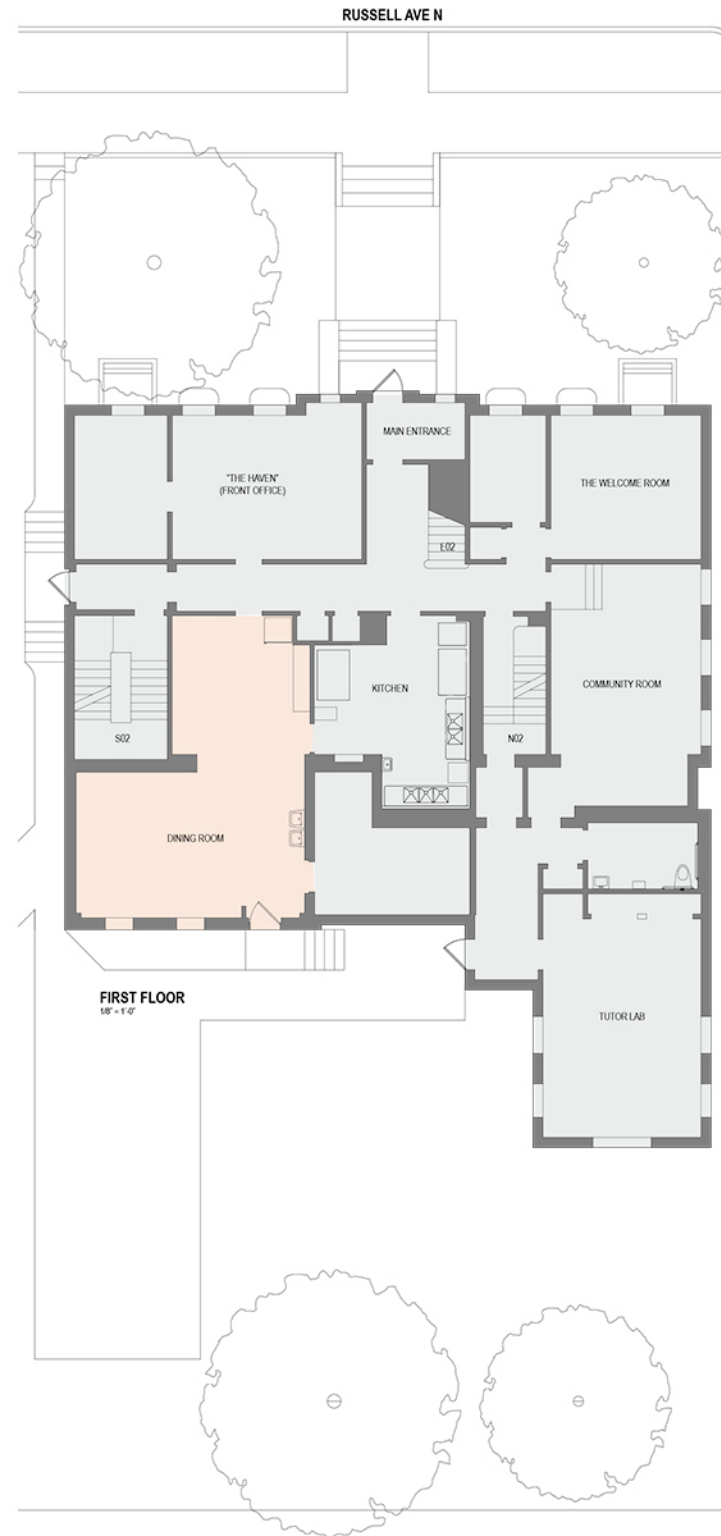
Tianna, Room 209
21, Pregnant
Bed x1
Storage x1
Workspace
Flex Space



Brandi, Room 211
25, 3 children, 4, 6 and 8 years old
Bed x4
Storage x4
Workspace x2
Play + Flex Space



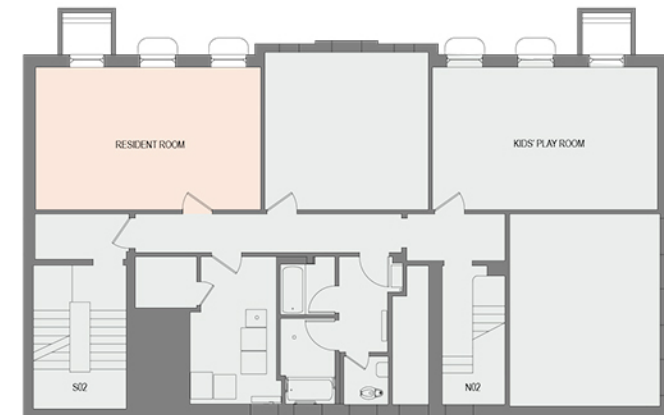
Jade, Room 208
32, 16-year old son
Bed x2
Storage x2
Workspace x2
Separate Flex Spaces



SECOND FLOOR
1/8" = 1'-0"



THIRD FLOOR
1/8" = 1'-0"



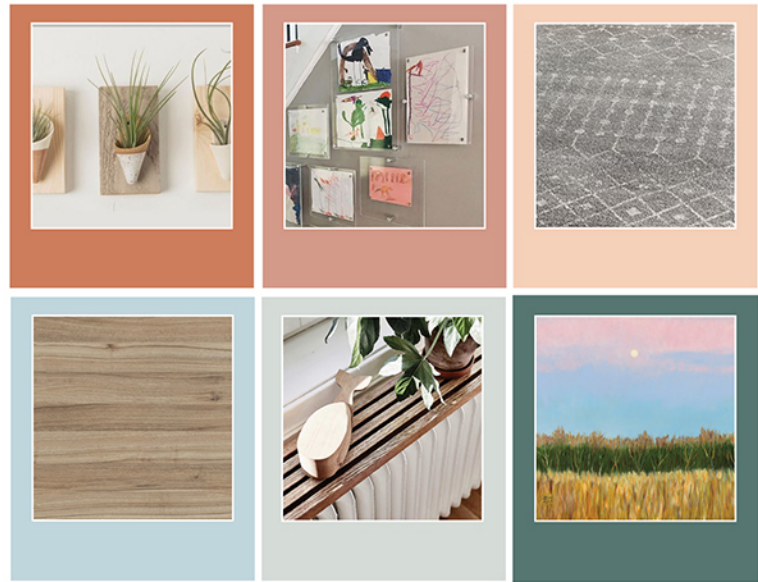
BASEMENT
1/8" = 1'-0"

Calm, Heal, Empower



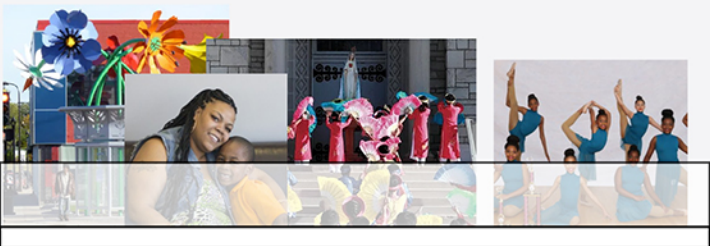
Sleeping Rooms

Inspired by the artwork of local female artists, this palette blends soft colors with accessories inspired by nature and customizability to create a comfortable, reassuring space.



Dining Room

This lively scheme for the dining room is inspired by the colorful architecture of the neighborhood and the richness of cultures that live in Minneapolis. The artwork is from a local artist and can be purchased very affordably through Juxtaposition Arts.

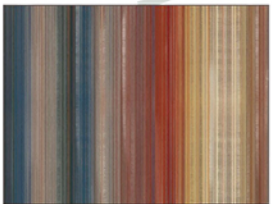


Baby + Kids

This 3-tier mobile cart is perfect for storing the various necessities for baby feeding and diapering. A version of this can be found at Ikea or Target at affordable prices.



Decor



Incorporating plants to spaces has proven to lift the spirits and enhance feelings of healing and rest. Succulents or air plants are low maintenance, and wall mounted containers would take up minimal space while adding to the pleasant ambiance of the room.



Living + Working



This wall-mounted half-round table meets the residents' needs of having a table at which to work, learn, and gather with their families, while also being flexible to fold down and open up the room when not being used.

Storage



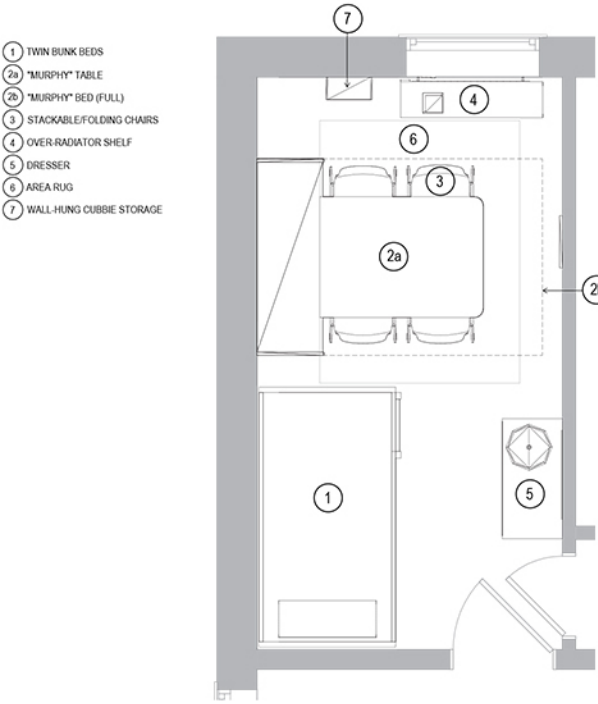
This creative closet door-mounted storage system is perfect for holding the miscellaneous, small accessories that get easily misplaced and can cause clutter in small spaces. It can be a safe space for keeping keys, glasses, bathroom accessories (toothbrushes, hair brushes) or even kid toys and baby accessories (like pacifiers, baby shoes, etc).



Concept 1: Miss Murphy

Room 201.
14' x 7.5'

In live/work mode, the room sits 4. In sleeping mode, the space sleeps 4, as a full murphy bed takes the place of the murphy table and the chairs are stacked into the corner. Soft lighting, greenery and art are incorporated along with an area rug and shelving for personal belongings.

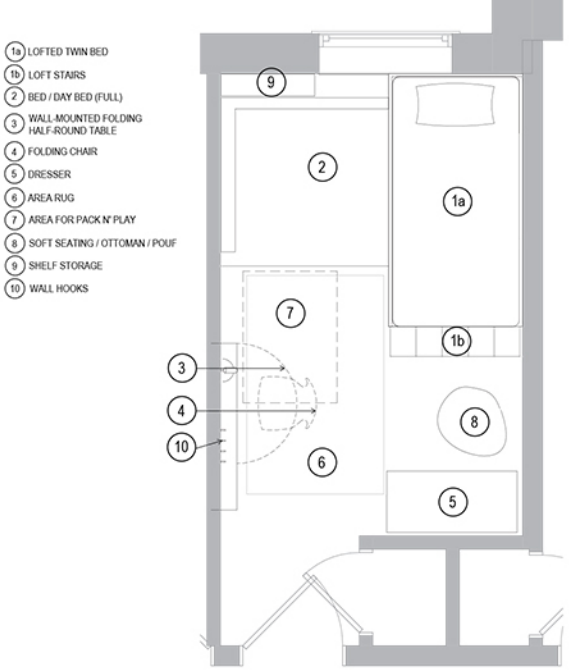


SECOND FLOOR ROOMS - OPTION 2
1/2" = 1'-0"

Concept 2: Sisters

Room 203.
14' x 7'

These two twin beds bunked perpendicularly create intimate nodes for seperation. Under the loft lies a desk and a bed that could be utilized for seating during the day. The folding half table and folding chairs can hang from the wall to open up the space.



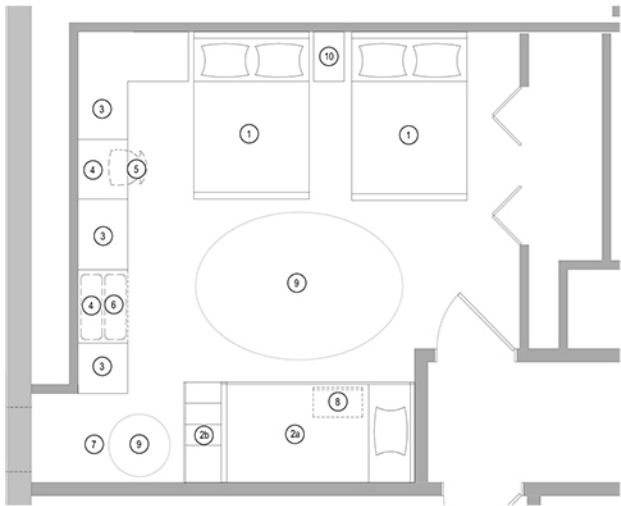
SECOND FLOOR ROOMS - OPTION 1
1/2" = 1'-0"



Concept 3: The Treehouse

Room 301.
17' x 17'

The Treehouse design sleeps 4-6 people. Each piece of furniture has storage built into it, making move in here easy and comfortable. The space between built-ins allows suitcase storage, desk space and room for play. The area rug and shelving units allow for further plush and customization.

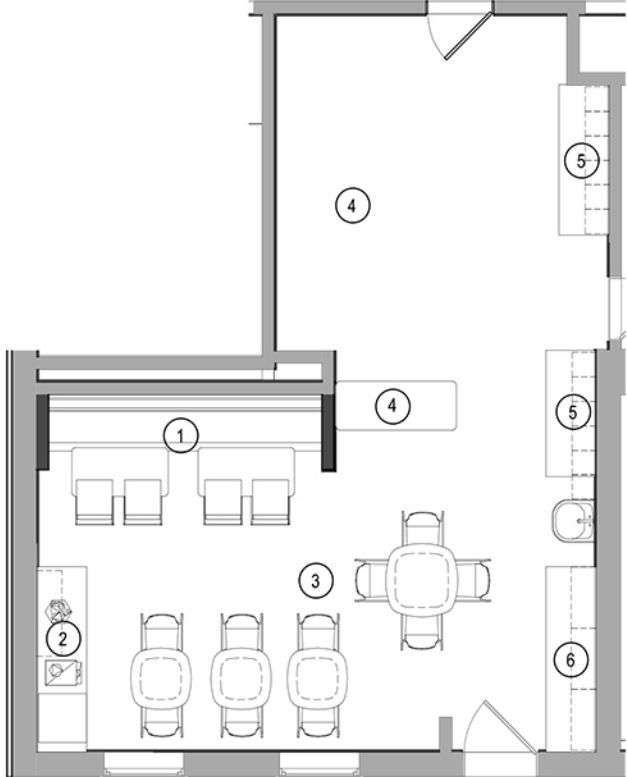


- THIRD FLOOR ROOM
1/2" = 1'-0"
- 1 FULL BED
 - 2a TWIN BUNK BEDS
 - 2b BUNK BED STAIRS
 - 3 BUILT-IN STORAGE
 - 4 DESK (STORAGE ABOVE)
 - 5 FOLDABLE CHAIR
 - 6 LUGGAGE STORAGE OPTION
 - 7 KIDS NOOK
 - 8 FOLD-DOWN WORK SURFACE
 - 9 RUG
 - 10 NIGHTSTAND

Concept 4: Dining Room

The dining room refresh uses bold colors to activate the space, including on the ceiling. The design incorporates booth seating into the space to add variety, as well as provide a space-efficient way to seat larger families. The coffee bar gets relocated to the corner to further open up space in the main seating area. Additional storage cabinets and counter space are added to the unused space adjacent to the exit door.

- 1 BOOTH SEATING
- 2 COFFEE BAR
- 3 MAIN SEATING AREA
- 4 EXISTING SERVING
- 5 EXISTING STORAGE
- 6 ADDITIONAL STORAGE CABINETS & COUNTER



DINING ROOM

