

LANDMARK FORM
INSPIRED BY THE
LOON

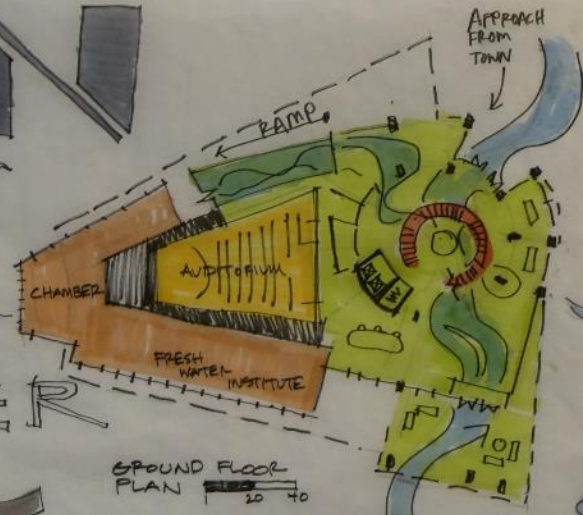
OVERLOOK
↓

LOON CENTER

DIVE THE
WATER
COLUMN



NORTH ELEVATION



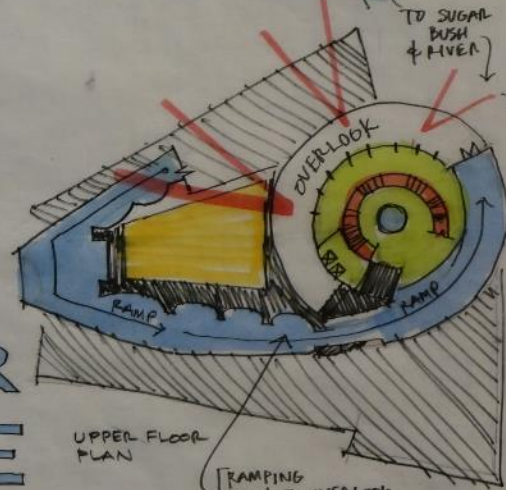
GROUND FLOOR
PLAN

GAVI DAE
GAVIA IMMER



WILD RICE

WHITEFISH
FRESHWATER
INSTITUTE



UPPER FLOOR
PLAN

RAMPING
PATH TO OVERLOOK
THEN A DIVE



Sept.
2016

Minnesota
Design
Team

THE LOON CENTER





LOON CENTER ROOFTOP OVERLOOK

SHORELINE TERRACE

HOLIDAY

HOTEL

NEW HOUSING

ANDY'S

Sept. 2016
Minnesota Design Team

S'MORE THAN MEETS THE EYE



CONCEPT:

- Position Crosslake as the premier freshwater research center for Central Minnesota
- Establish research center to promote education, water quality protection and responsible water recreation stewardship
- Collaborate with government, education institutions, organizations and businesses
- Perform year-around research and state-wide support services
- Conduct research, conferences, seminars, etc.
- Create field labs, family learning center, classes, etc.
- Design LEED certified marina
- Encourage youth involvement, college internships, and retiree volunteers

the leader in "recreational quality of life"



POTENTIAL PARTNERS:

- Government – City, County, State & Federal
 - Corps of Engineers
 - Fish and Game
 - DNR
- Academia –
 - Crosslake Community School
 - Pequot Lakes School District
 - Colleges and Universities
- Organizations –
 - Whitefish Area Property Owner's Association
 - Crosslake Chamber of Commerce
 - Brainerd Lakes Area Economic Development Corp.
 - Freshwater Society (Minnetonka)
- Businesses & Individuals –
 - Boating and Recreation (local & national)
 - Supporting area businesses
 - Contributing individuals

Sept. 2016
Minnesota Design Team

WHITEFISH FRESHWATER INSTITUTE

