

SITE: a line, a plane, & a point

Situated between County Road 61 and the Mesabi Trail, the new rest area provides an opportunity to connect the two routes and invite all visitors to stop, rest, and explore the constructed nature of the site and learn about its layered history. A new bridge crosses the Lower Prairie River and leads to a continuous elevated boardwalk loop (**a line**) to provide a guided path to all visitors. Visitors from the Mesabi Trail encounter a bike parking pavilion (**a plane**) which serves as the gateway to the elevated boardwalk. The loop connects the gateway, the bridge, and the rest stop tower (**a point**).

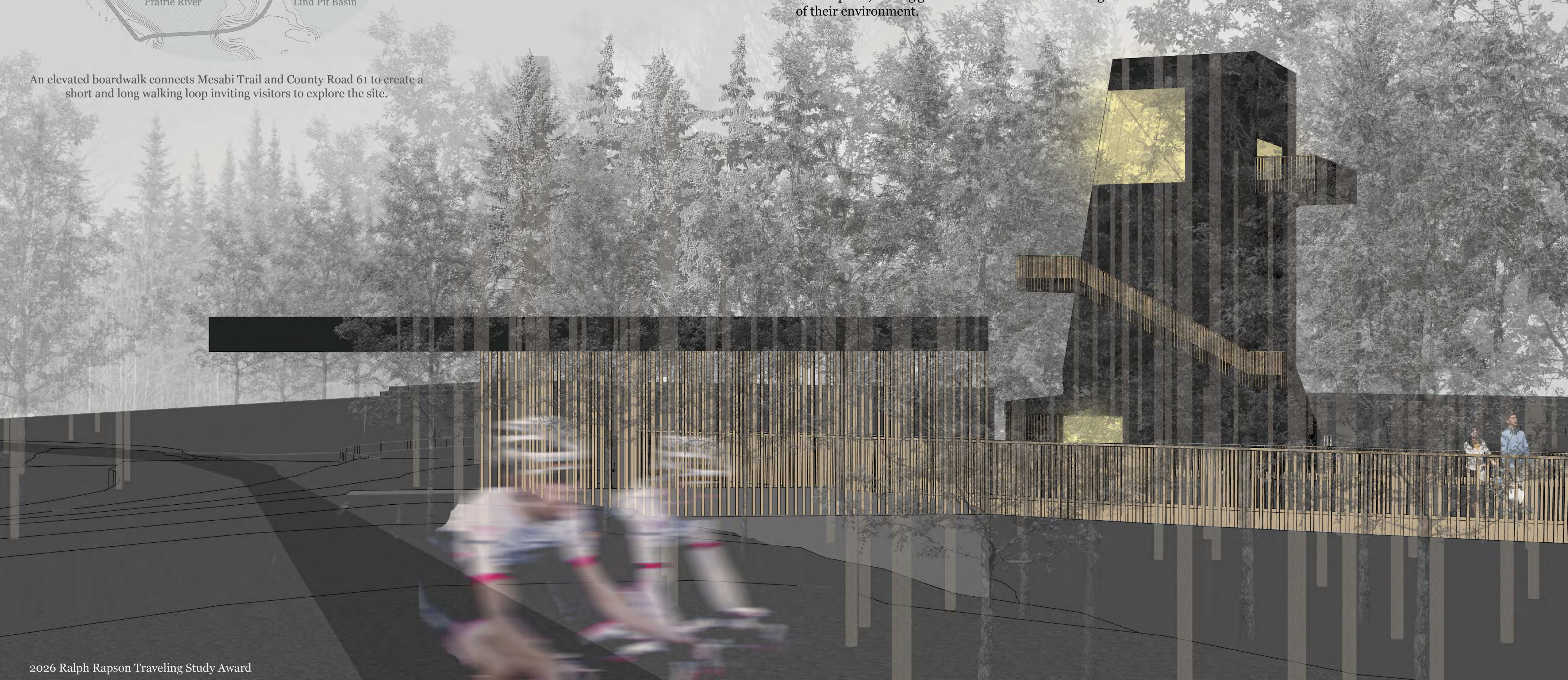
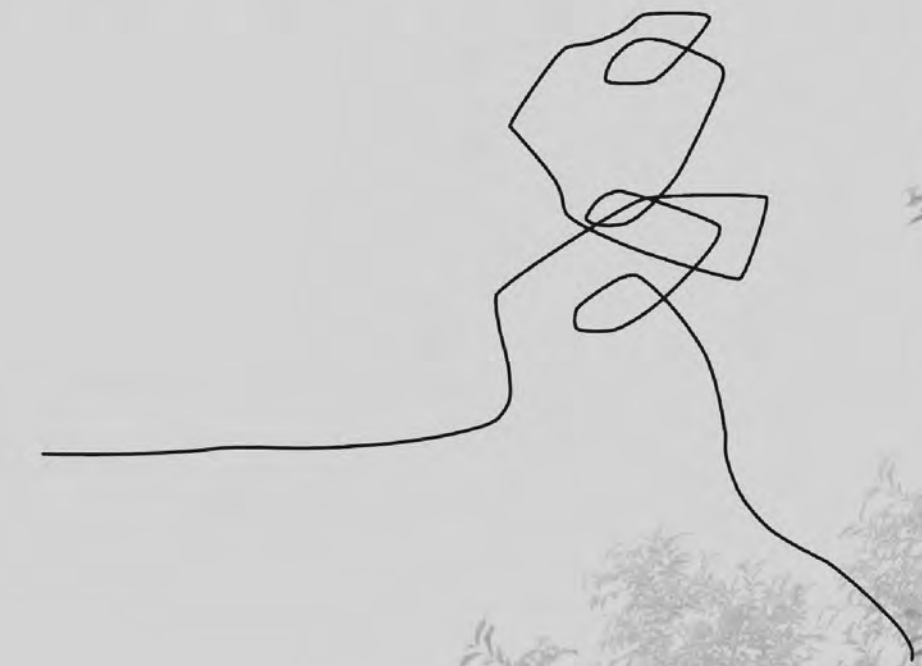
An elevated boardwalk connects Mesabi Trail and County Road 61 to create a short and long walking loop inviting visitors to explore the site.

BUILDING: a point of view

The Prairie River site is a place of layered meaning where history and storytelling has compounded on a single point. This proposal unpacks that history as visitors ascend a 5-level tower. The slanted tower exists as a single point in space and multiple points in history, stands as a powerful metaphor for the dual nature of space-time that shaped the area's landscape. The tower's form both minimizes site impact and references the Bruce Mine headframe, a historic remnant of the Iron Range's mining history.

By playing with the opacity of tower materials, the building materials create overlapping degrees of enclosure, privacy, and atmosphere that mimic the layered historical meanings. As visitors ascend the tower, they transcend the present, going back in time where they're confronted with a gloriously devastating past amid panoramic views of the landscape. The spatial experience challenges preconceived points of view of place, leaving guests with a new understanding of their environment.

POINT OF VIEW



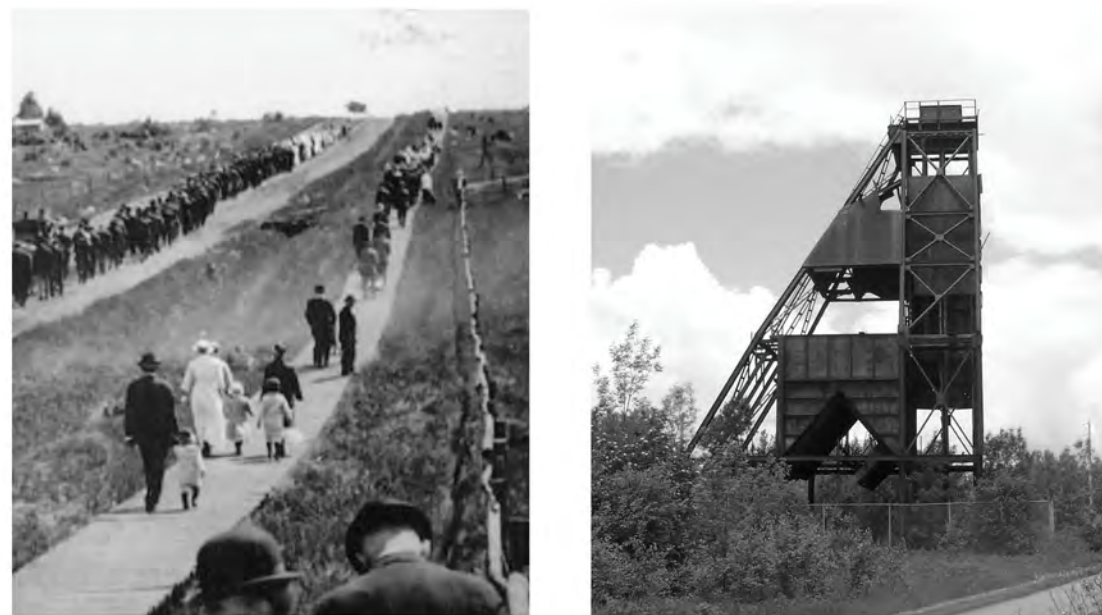
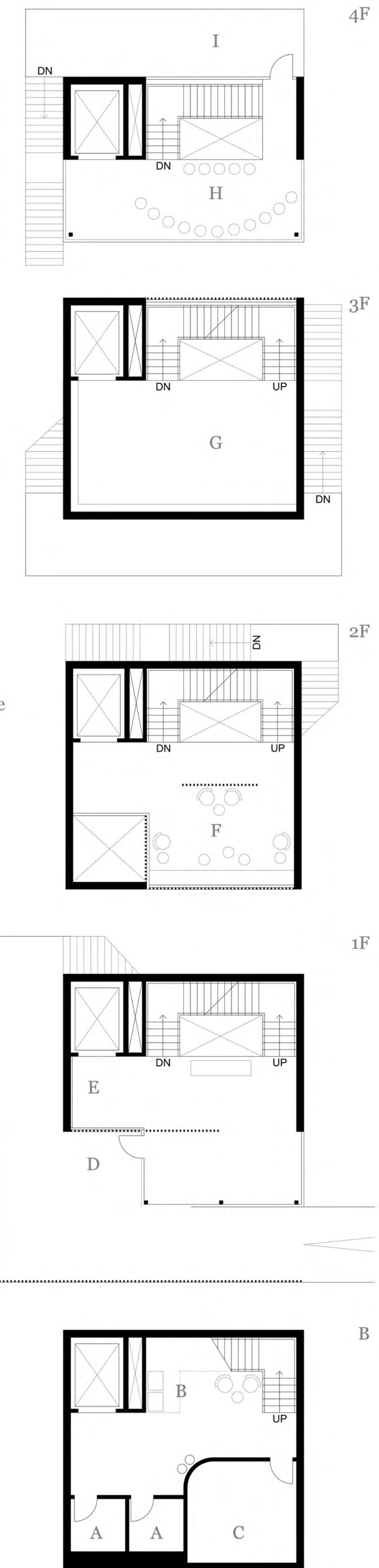


LEFT: VIEW OF PORTAL

Layers of wood screen and glass blur the boundaries of inside/outside and extend the journey of arrival. The wood screen portal filters view upon arrival and frames view at exit.

RIGHT: FLOORPLANS

- J. Solar Panels (Roof)
- I. Balcony & Exterior Stair
- H. View Room & Event Space
- G. Interpretation Room
- F. Screened Room
- E. Elevator
- D. Entry & Portal
- C. Mechanical & Equipment Storage
- B. Vending
- A. Restroom



TOP LEFT: Historic photo of miles-long boardwalk connecting mines and workers' town (Source: MN Lost Mining Town Documentary)

TOP RIGHT: Bruce Mine Headframe, Chisholm, MN (Source: online search)

MIDDLE: Axonometric Diagram illustrates entry and exit paths. Each level offers different views and degree of enclosure and privacy.

RIGHT: Section Perspective. Each level frames different views and overlays new meaning of the surrounding landscape.

