

THE RIVER RAN RED

Growing up in the shadow of an abandoned copper mine, the remnants of the mining operation were the backdrop to our play: the steel scaffold of the refining plant, the brilliant orange mountains of fine tailings, and the hillsides covered in rubble. As kids, it was only natural that the river ran red.

Waves of extraction of timber, ore, sand, and nutrients have permanently reshaped the Minnesota landscape. These industries have been a boon for the people of the state at an intense cost to the flora, fauna, waterways, and ecosystems. This rest stop recalls the forms and materials of Minnesota's mining history to make visible the underpinnings of the landscape and systems that surround us.

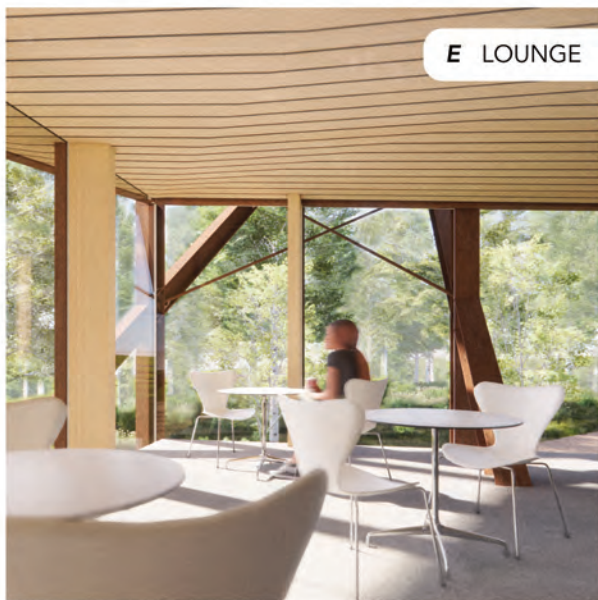
The building is positioned just below the hilltop, just above the floodplain, and set back generously from the riverbanks. The rocky roof slopes up as the ground falls away, raising a boardwalk above the trees for a clear view across the adjacent quarry lakes and tailings mound to the southwest. A steel portal cuts through the rocks, leading visitors to an outcropping of cut Mesabi granite stone before winding down into an airy auditorium looking out to the woods, wetlands, and river shores beyond.

In a beautiful landscape scarred by mining, the rest stop uses dramatic formal compositions, materials laid bare, and multiple overlapping axes of exploration to inspire a critical lens and curious approach to the Minnesota landscape.





D AUDITORIUM

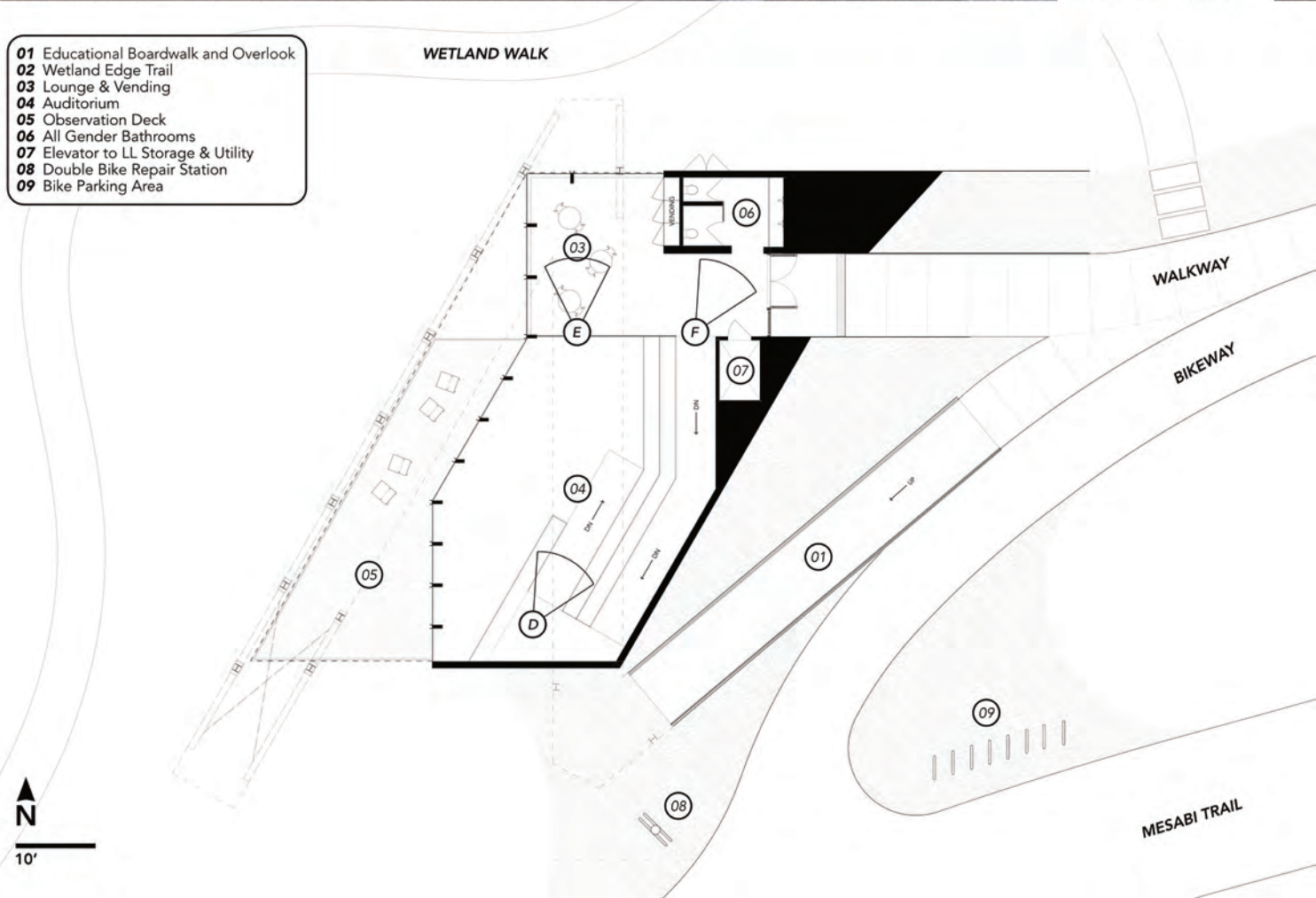


E LOUNGE



F BATH

- 01 Educational Boardwalk and Overlook
- 02 Wetland Edge Trail
- 03 Lounge & Vending
- 04 Auditorium
- 05 Observation Deck
- 06 All Gender Bathrooms
- 07 Elevator to LL Storage & Utility
- 08 Double Bike Repair Station
- 09 Bike Parking Area



WEATHERED STEEL



MESABI BLACK GRANITE



MASS TIMBER

