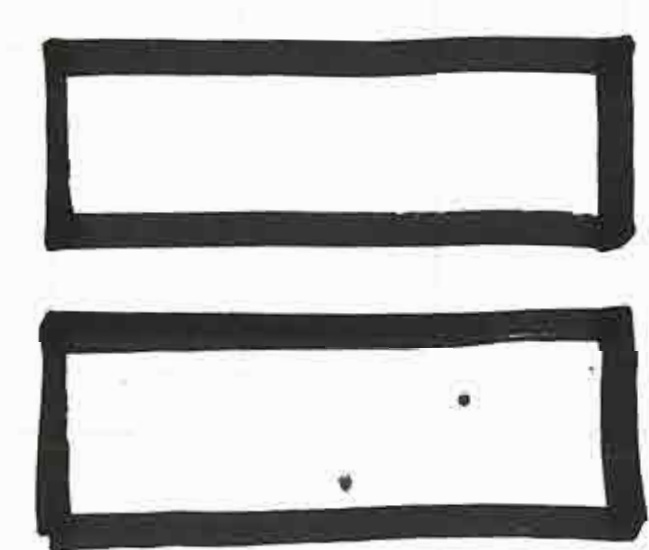
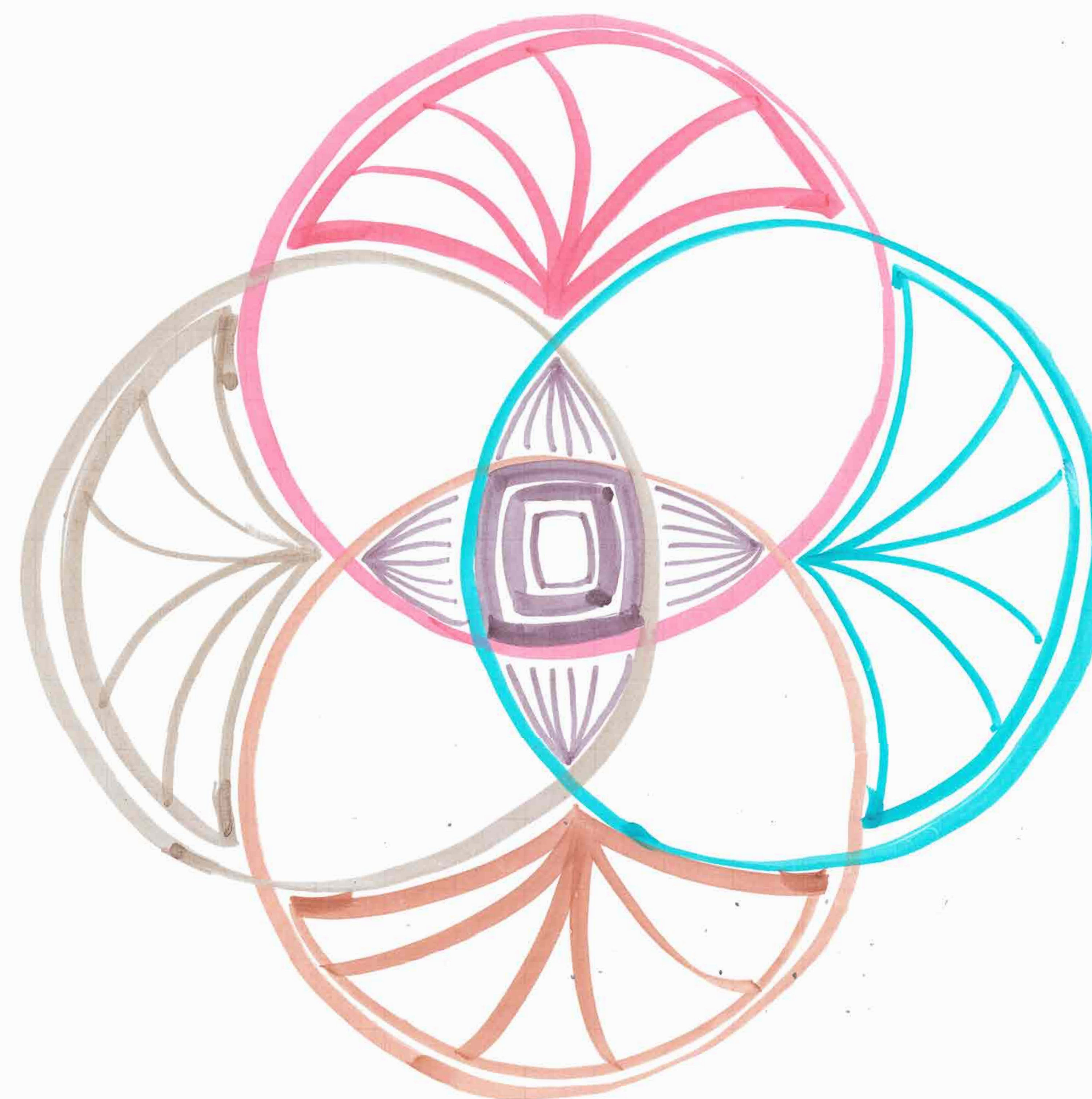


QUALITY
OF LIFE



SUSTAINABILITY

social
environment



natural
environment

natural
environment

economic
environment



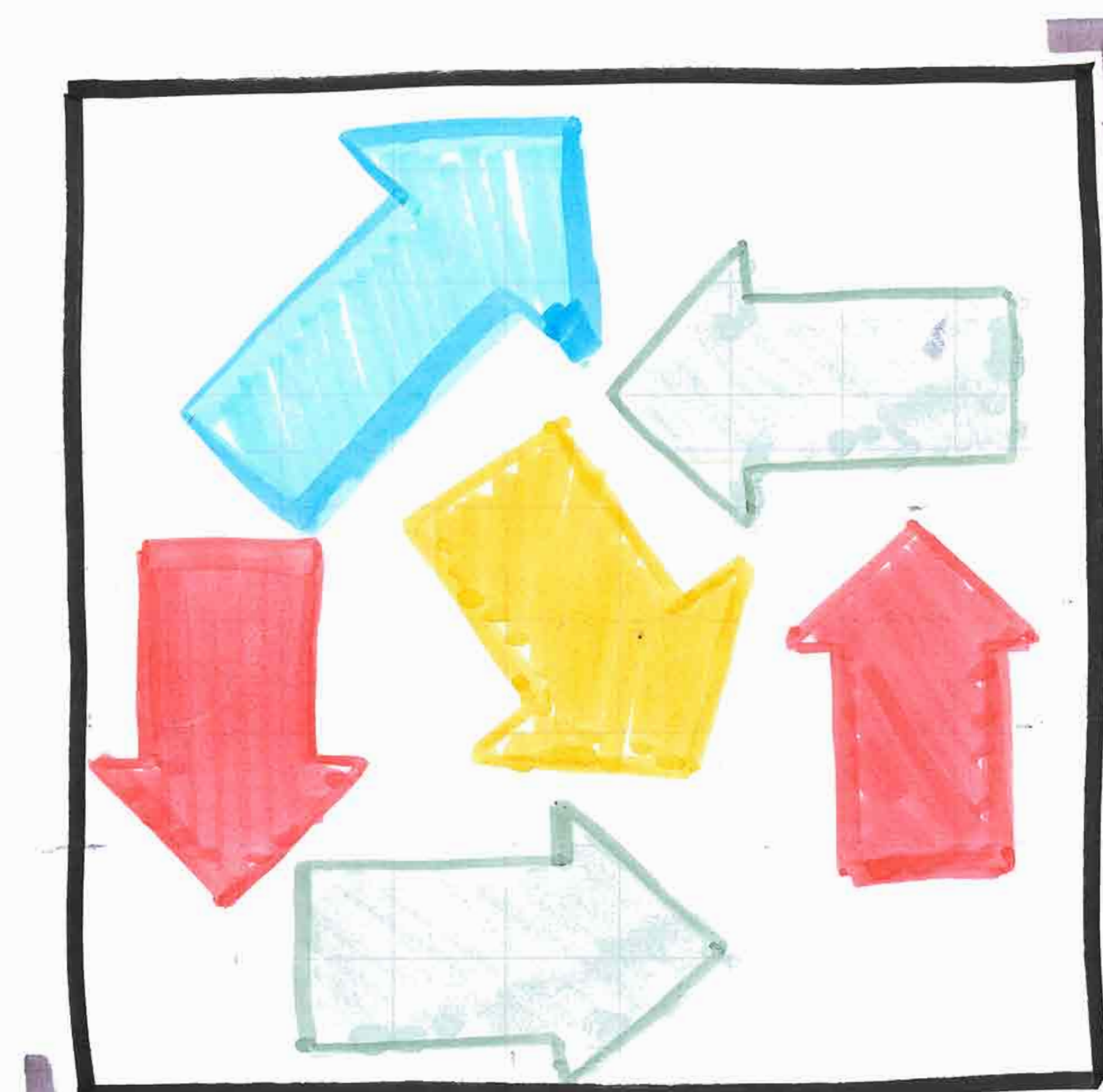
Minnesota
Design
Team

FOUR ENVIRONMENTS



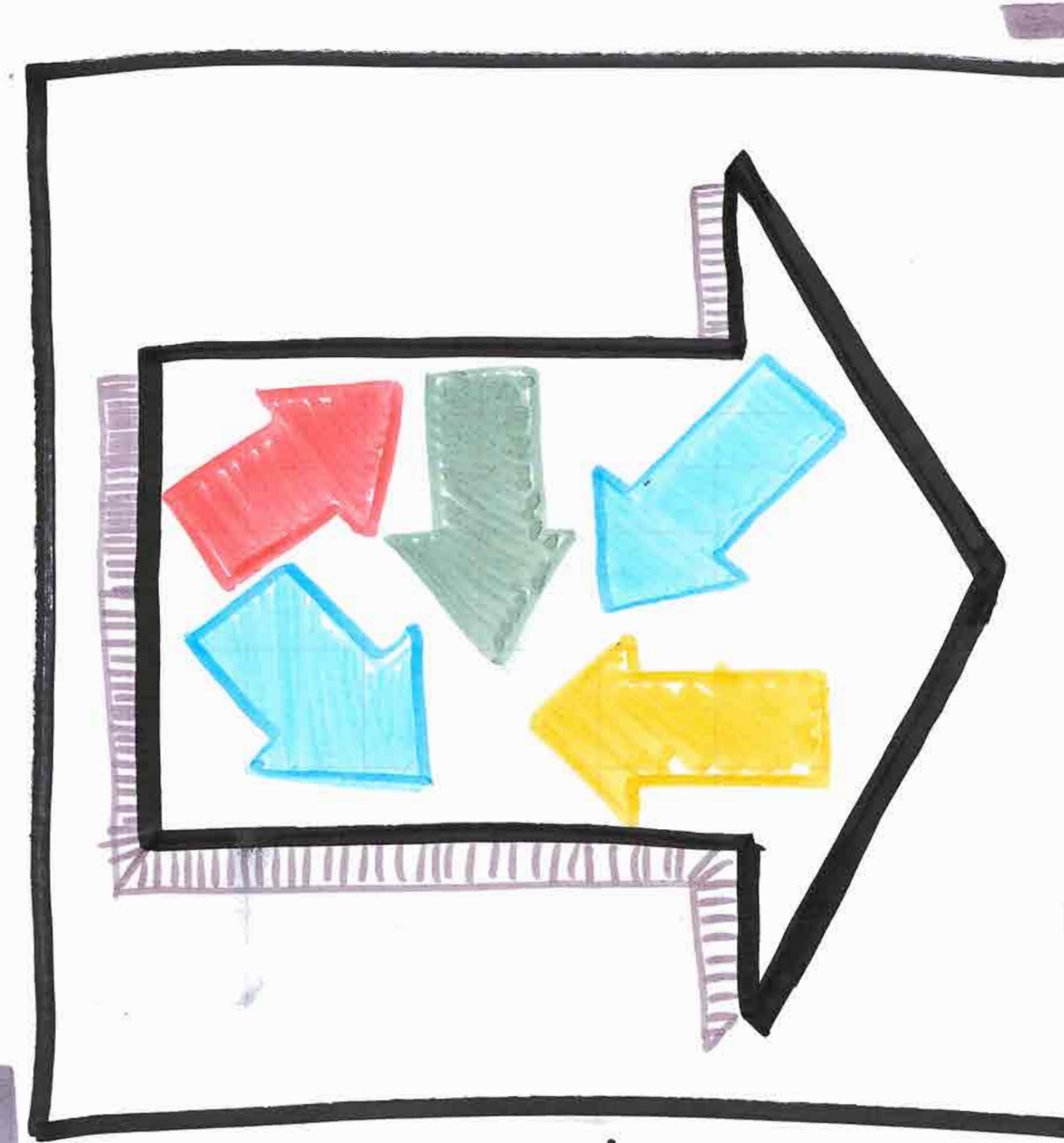
June 2012





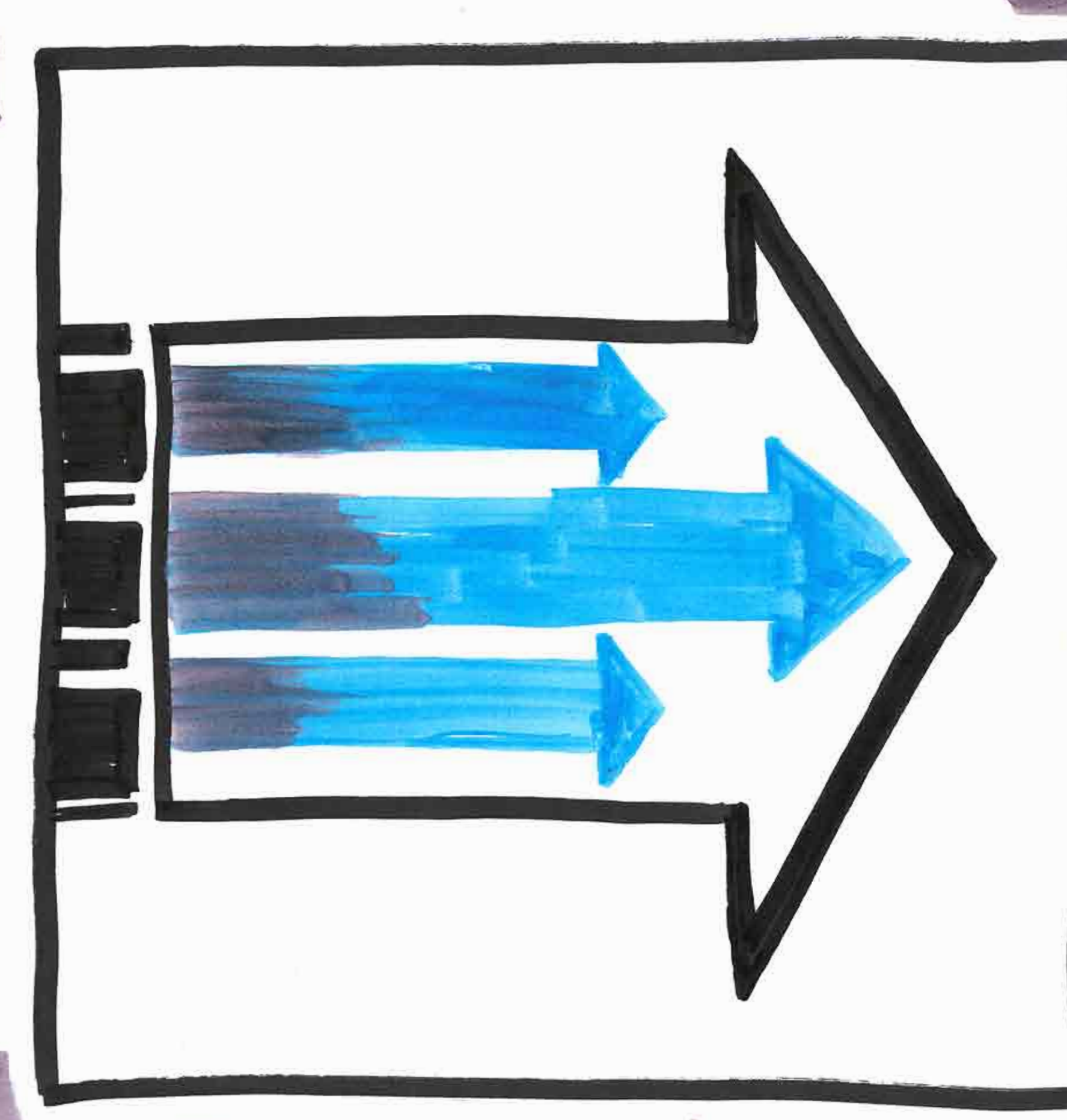
no vision

- groups move in various directions
- no plan or coordination



imposed vision

- plan without community involvement
- lots of energy expended
- no forward movement

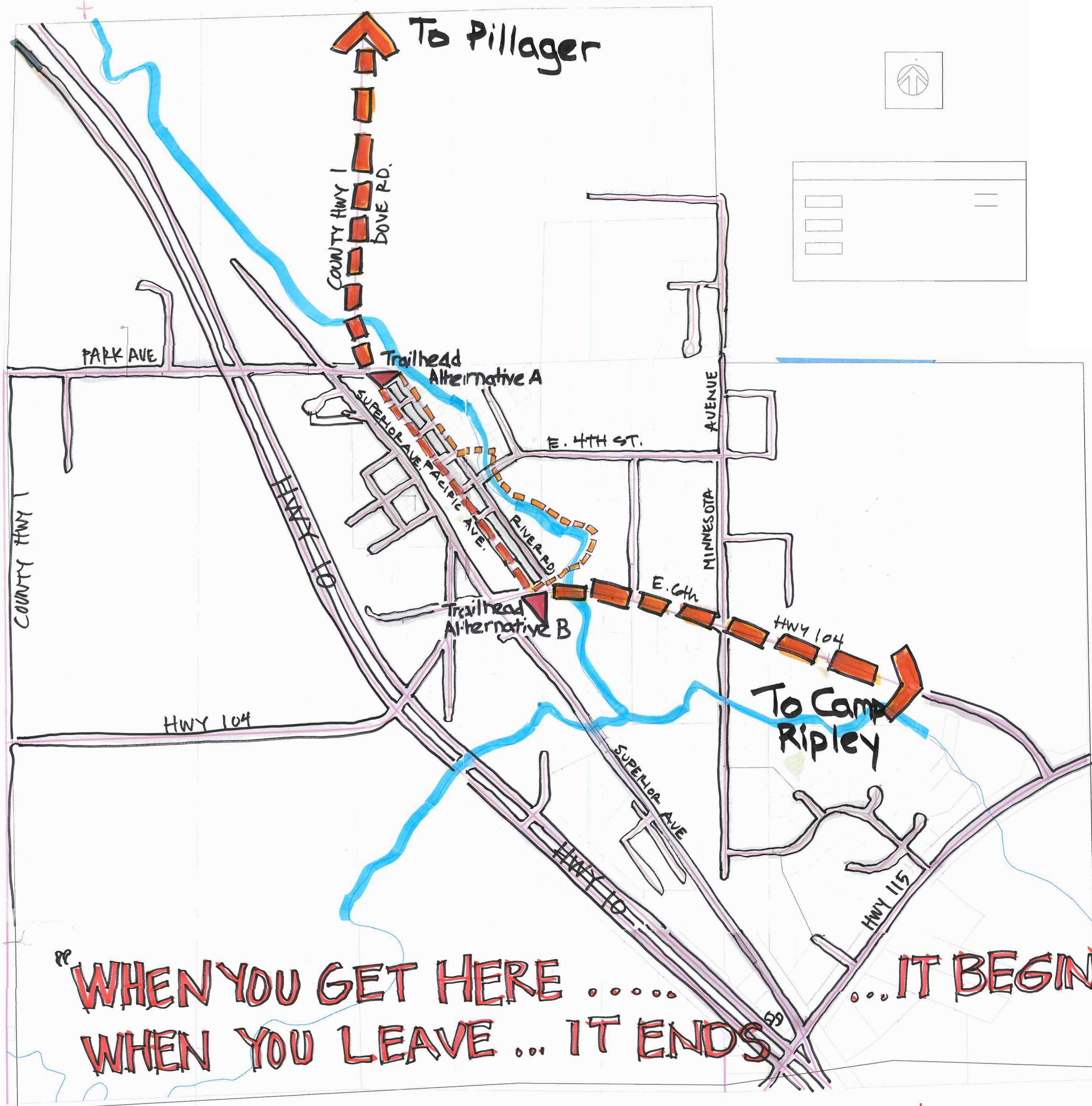
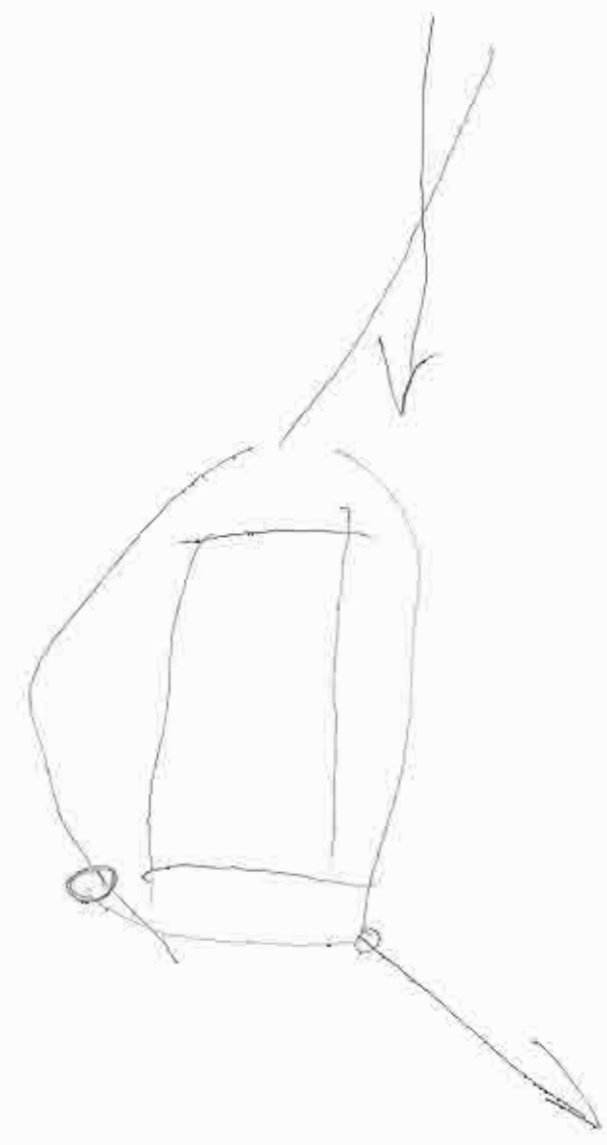


Shared vision

- community planning
- all groups acting in concert
- forward movement
- plans become reality

GOAL

"it has to begin with total community cooperation..."



Minnesota
Design
Team

TRAIL IN REGIONAL CONTEXT

3

June 2012





Minnesota
Design
Team

ECOLOGY & BEAUTIFICATION

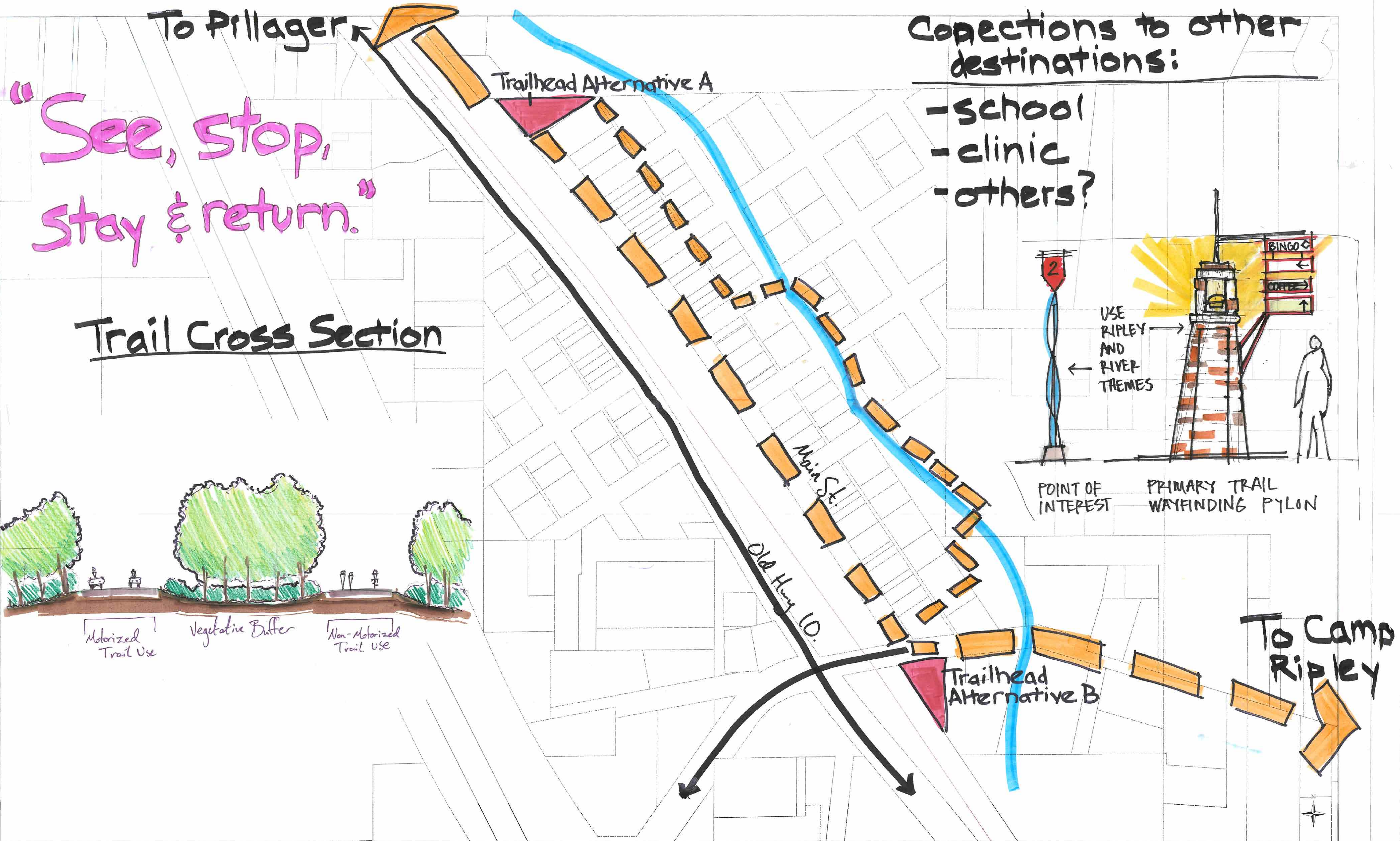
1 inch equals 100 feet

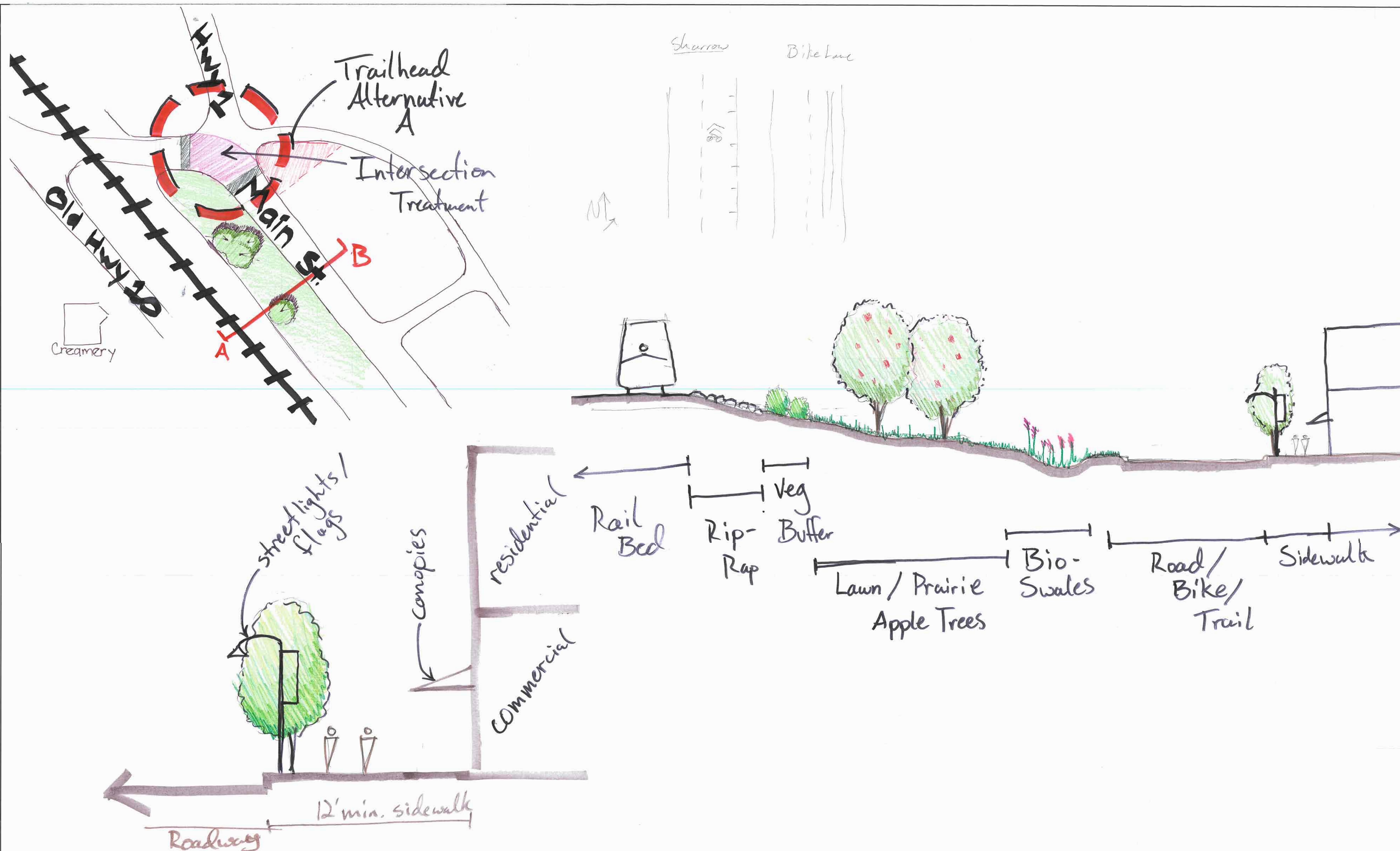
100 50 0 100 200 300 400 500 600 700 800 900 1,000 Feet

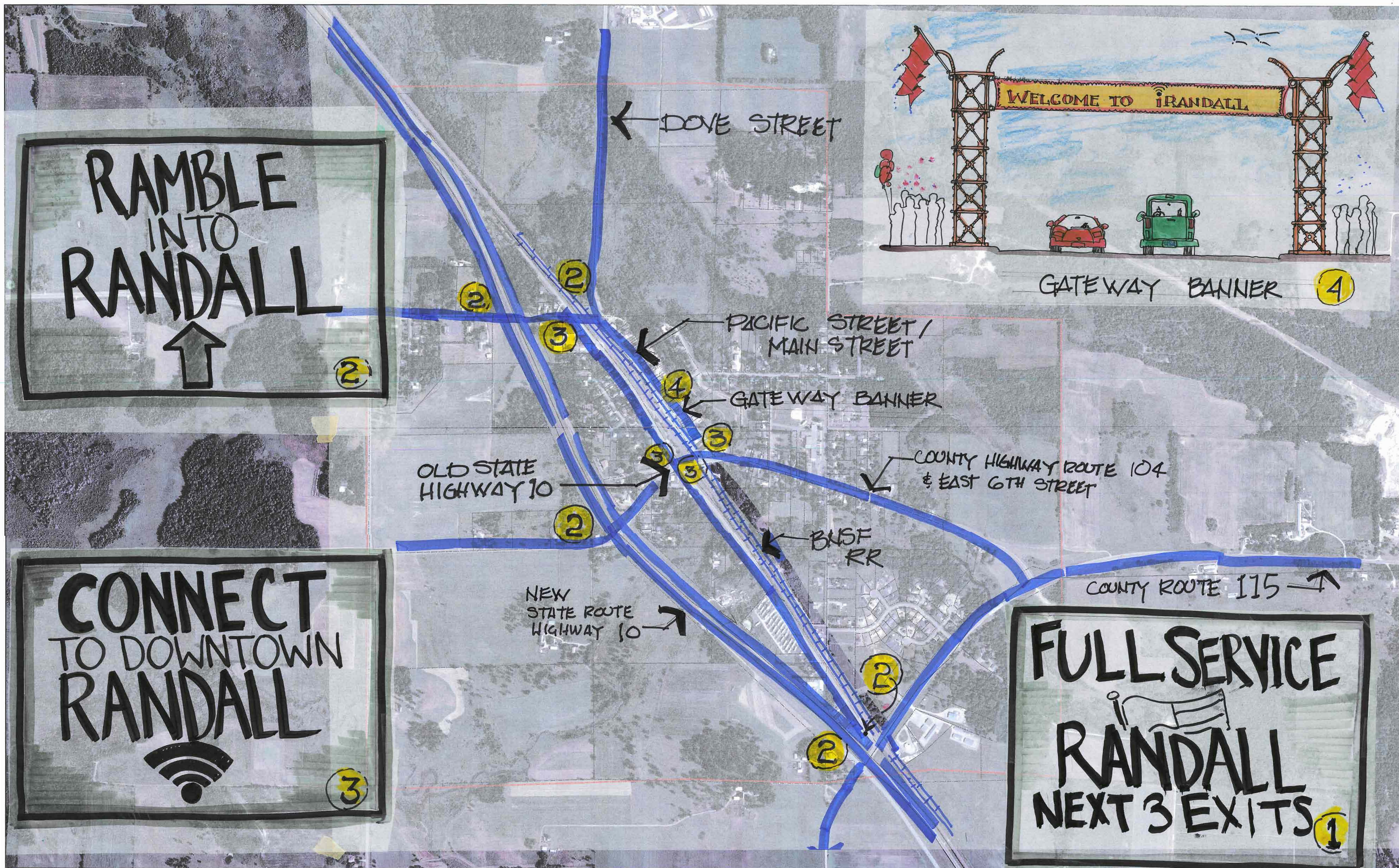
June 2012

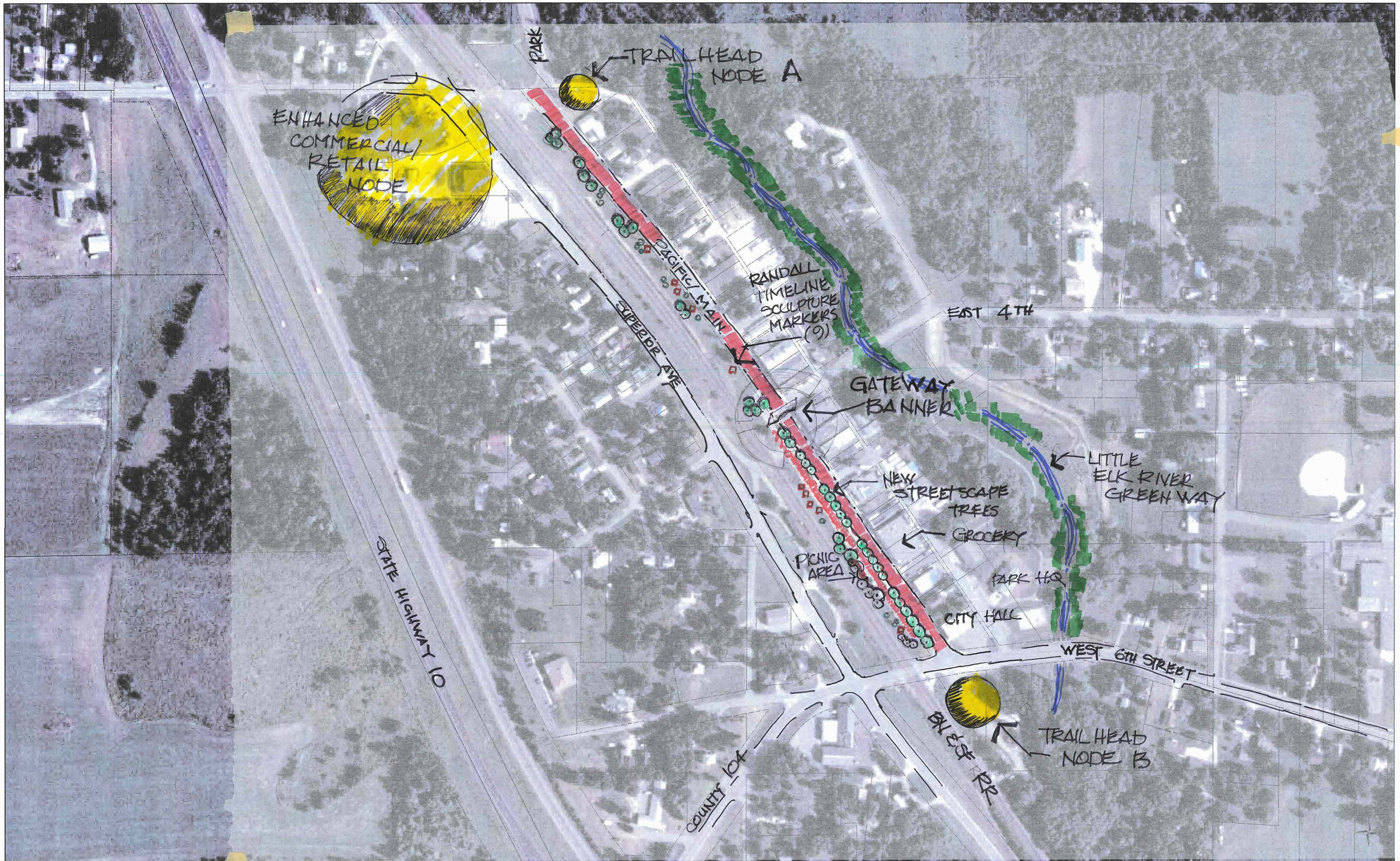
4











Minnesota
Design
Team

MAIN STREET IMAGE IMPROVEMENT

1 inch equals 100 feet

100 50 0 100 200 300 400 500 600 700 800 900 1,000 Feet



June 2012

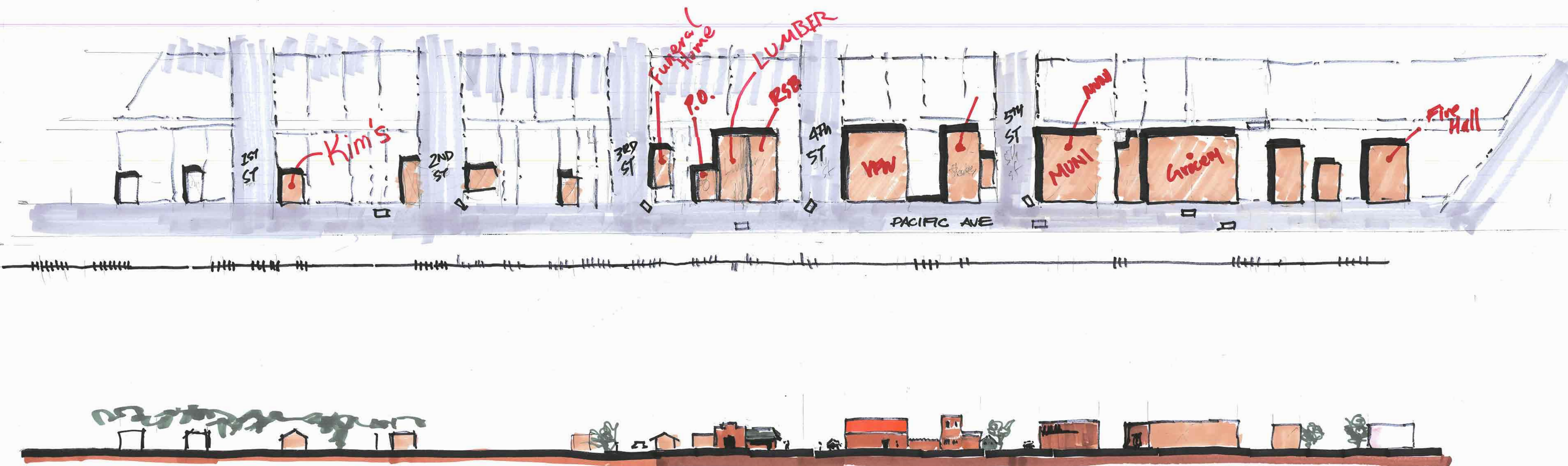


Infill Opportunities

↳ bldg/business

↳ organic gardens

+ business is not always in a bldg.



Minnesota
Design
Team

DOWNTOWN INFILL OPPORTUNITIES

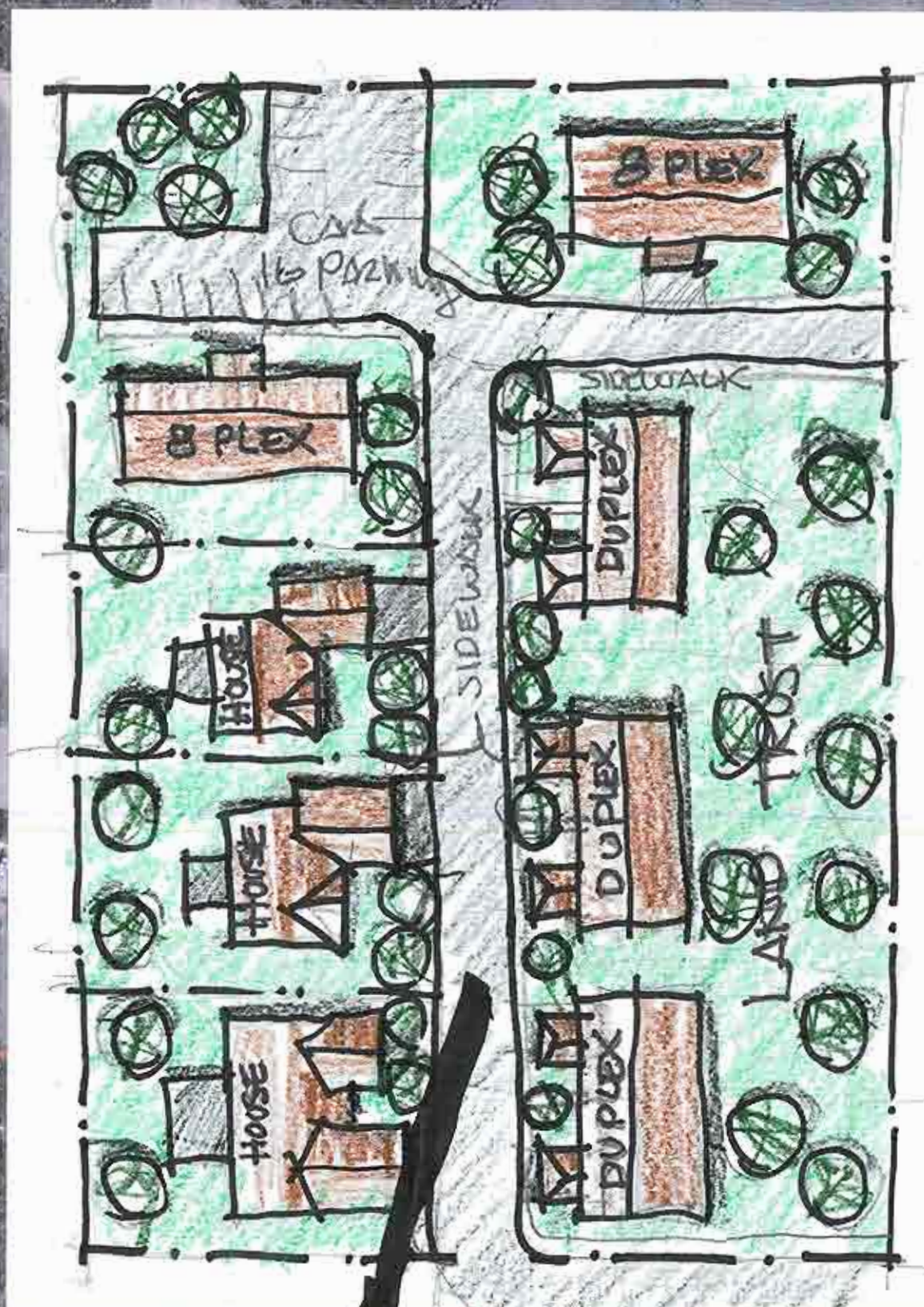
9

June 2012

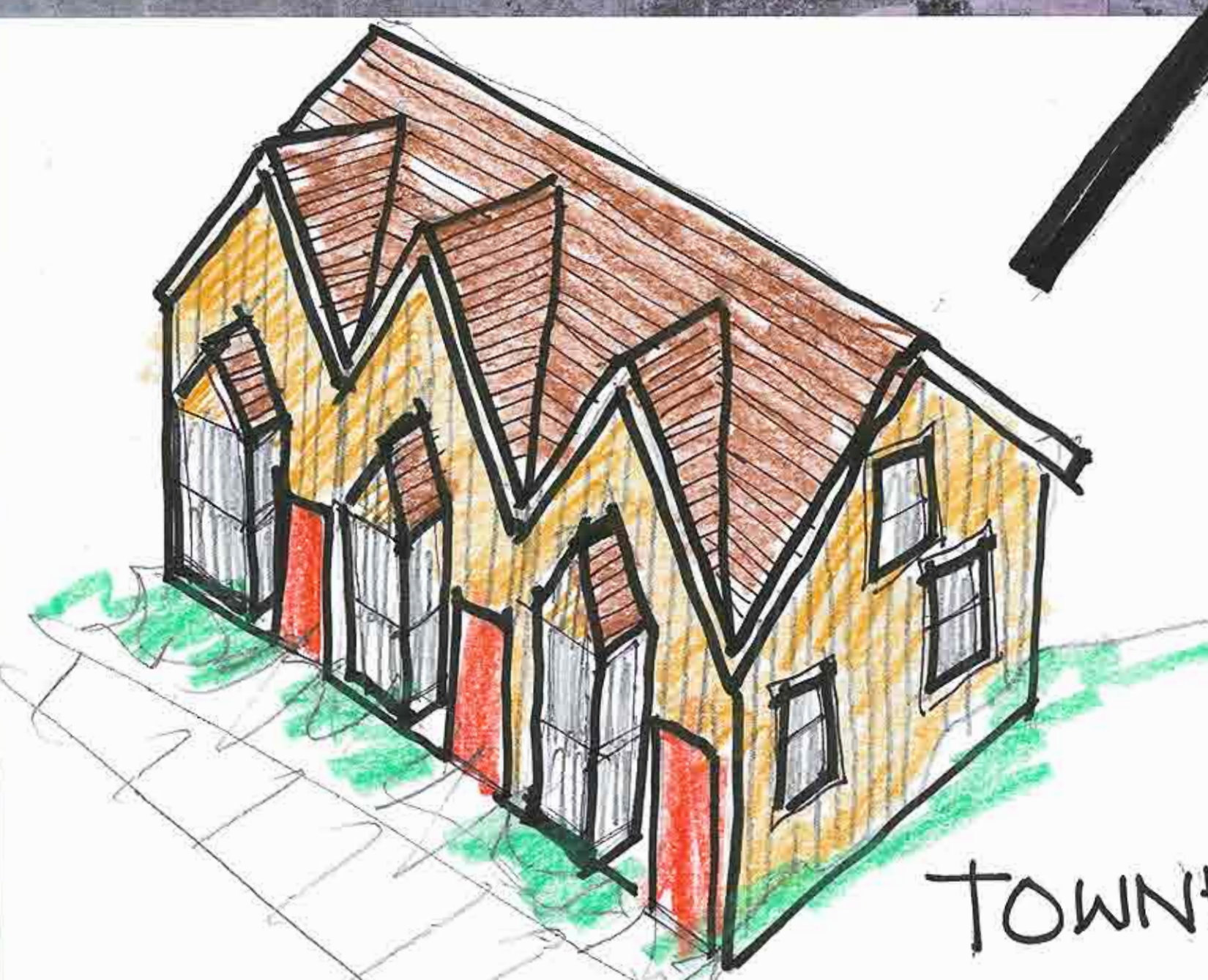




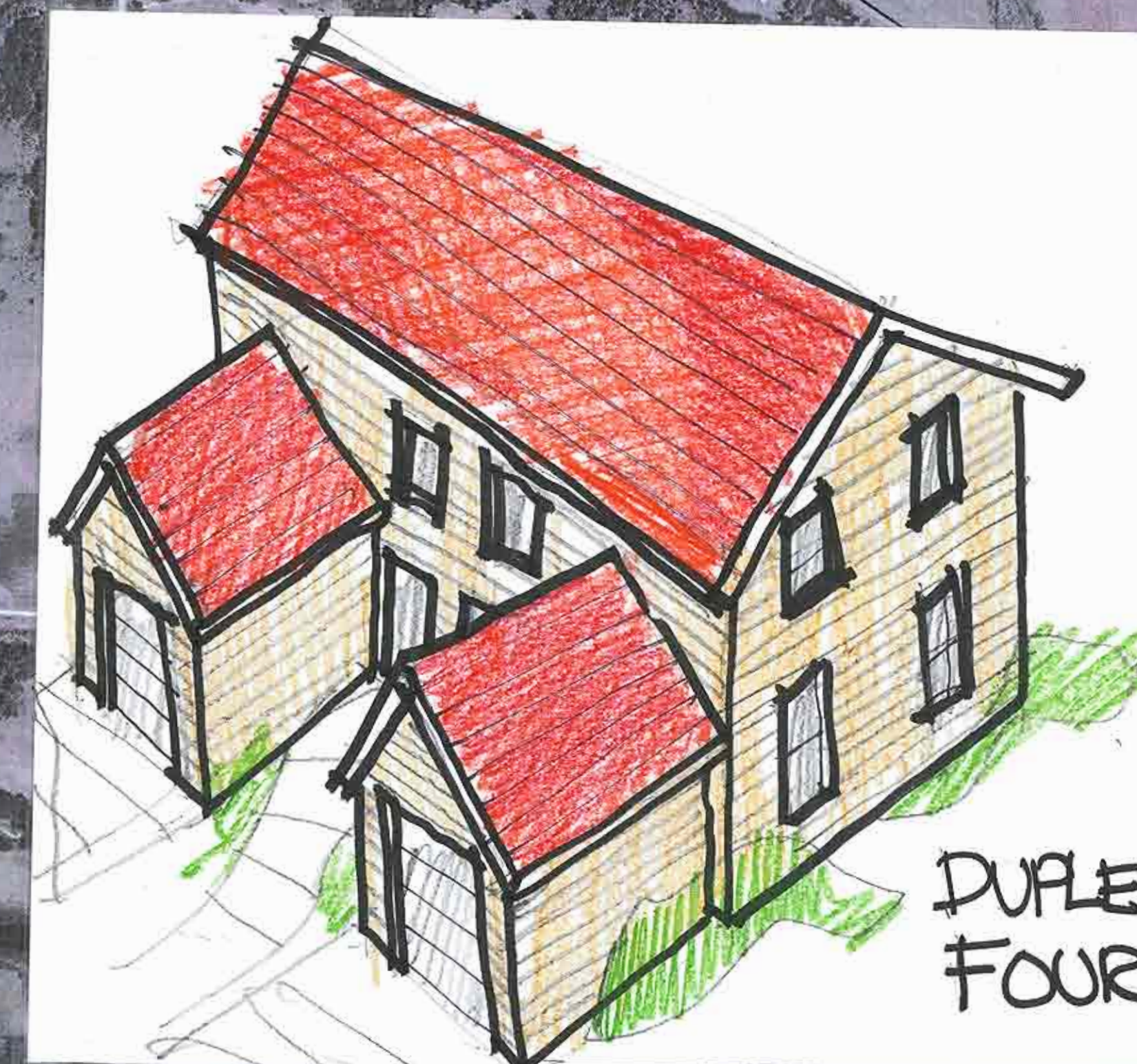
MIXED USE
APARTMENTS
OVER STORES



4-8 UNIT
APARTMENT



TOWNHOUSES



DUPLEX &
FOURPLEXES



Minnesota
Design
Team

HOUSING

1 inch equals 800 feet

1 0.5 0 Miles

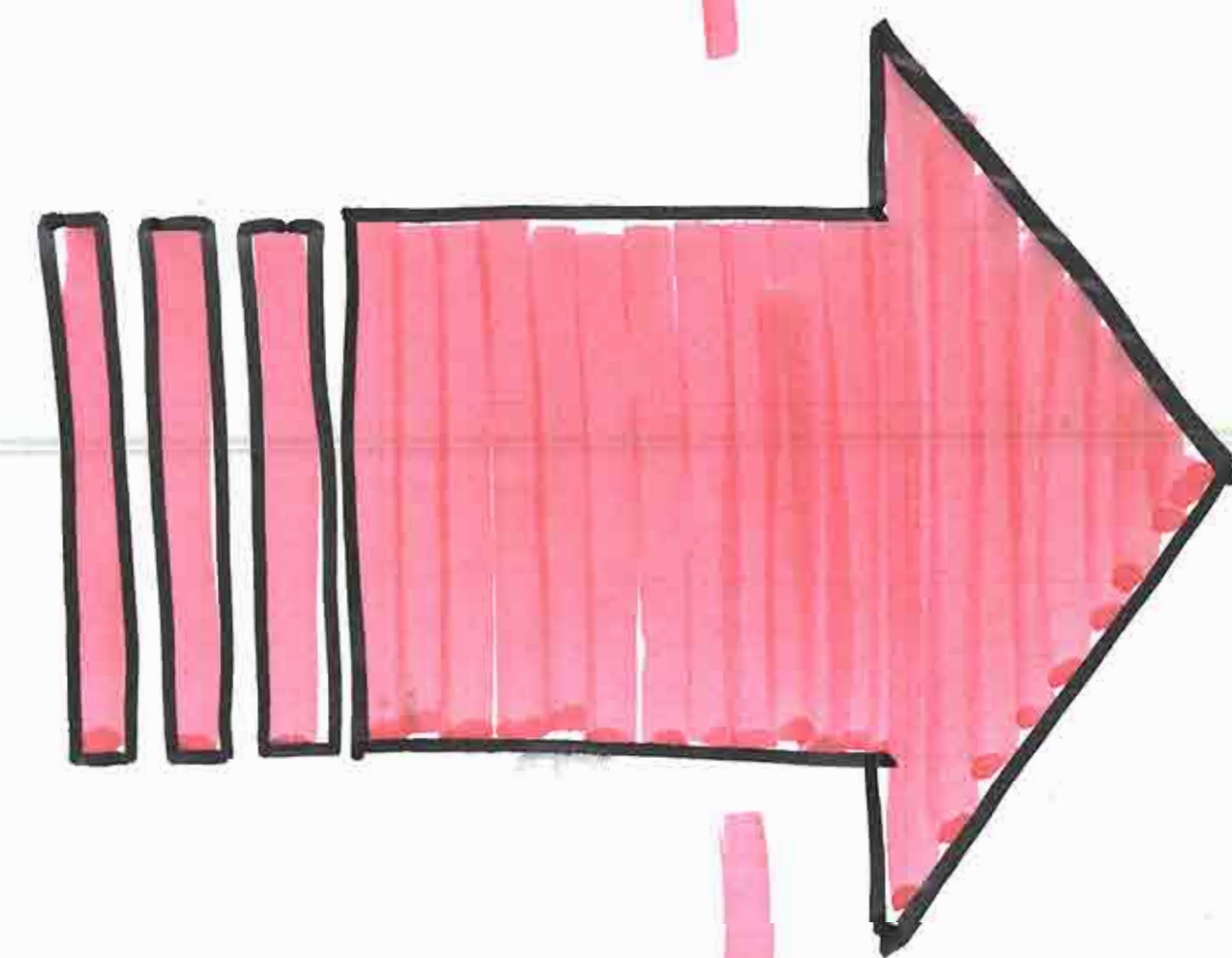
10

June 2012



ECONOMIC DEVELOPMENT

MORE THAN
BUSINESS
ATTRACTION



ECONOMIC GARDENING

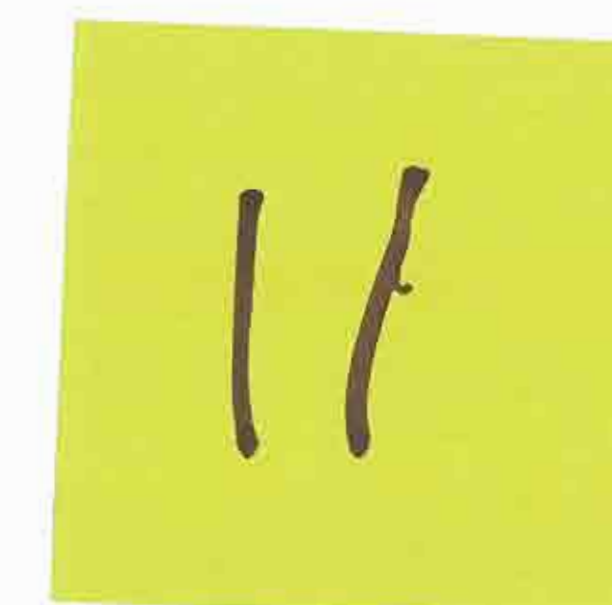
- ✦ ENTREPRENEURIAL
- ✦ GROW YOUR OWN
- ✦ NEW BUSSINESS START-UPS
- ✦ STAGE 2 EXPANSION
- ✦ SUCCESSION PLANNING

=
JOBS



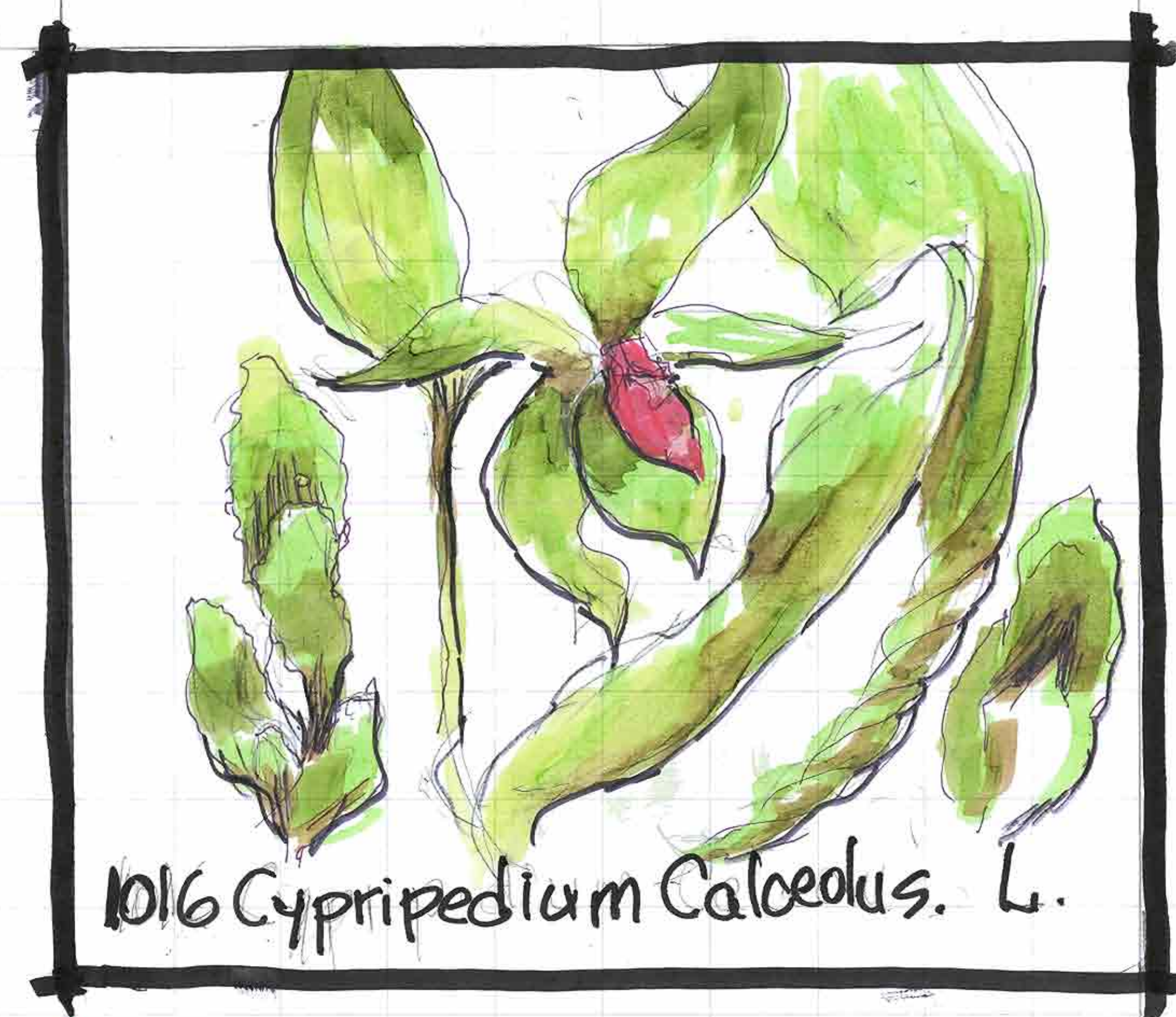
Minnesota
Design
Team

ECONOMIC 'GARDENING': WHAT
&
WHY?



June 2012





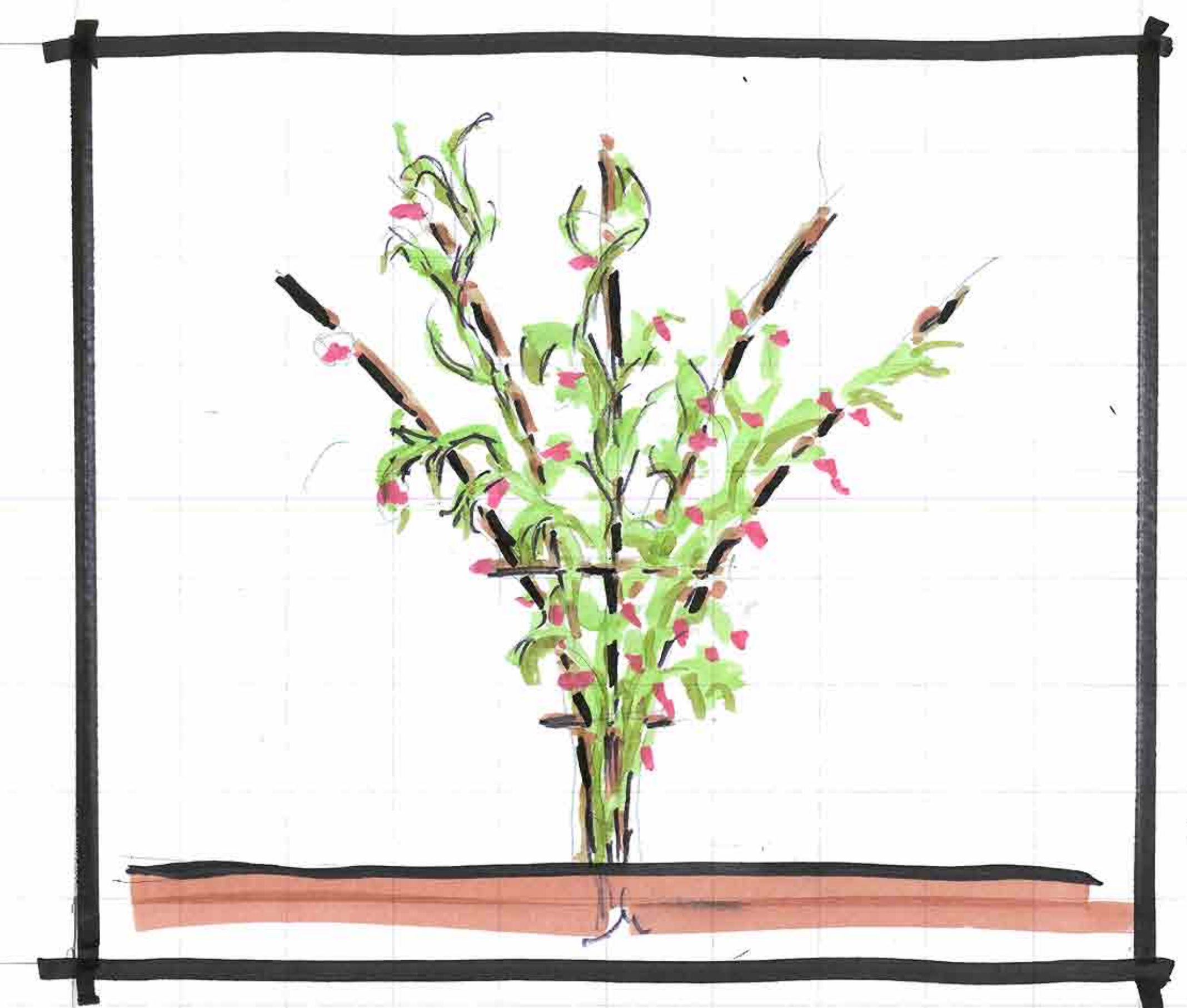
IDENTIFY

- BUSINESS OPPORTUNITIES
- EXPANSION OPPORTUNITIES
- LOCATION
- ENTREPRENEURS



EDUCATE

- COACHING
- CLASSES
- eCOMMERCE USE
- APPRENTICESHIP
- CREATIVITY/INNOVATION

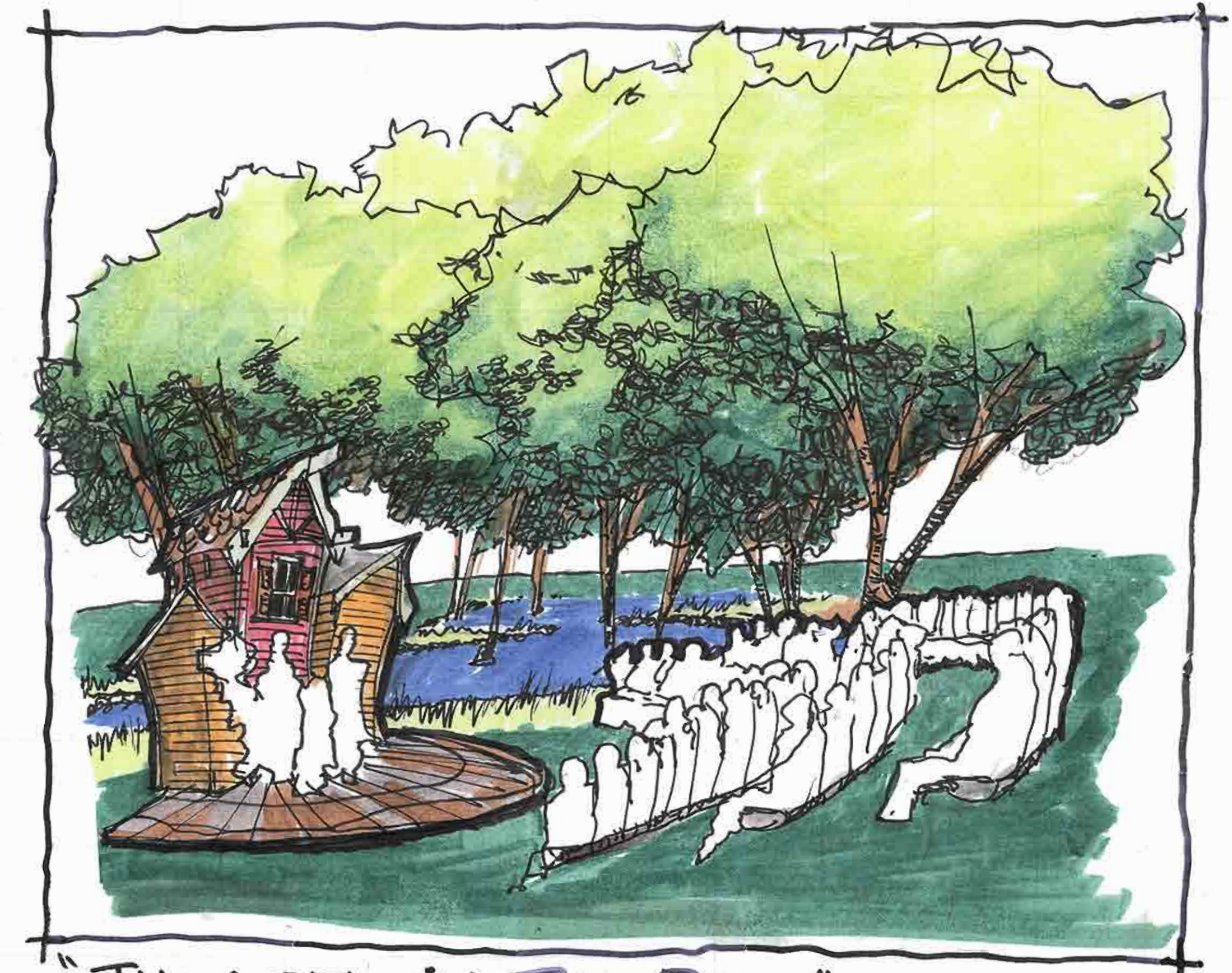


SUPPORT

- MICRO LOANS
- LOCAL FINANCING
- "KICKSTARTER"
- SUCCESSION PLANNING



RANDALL "PARADE OF HOMES"

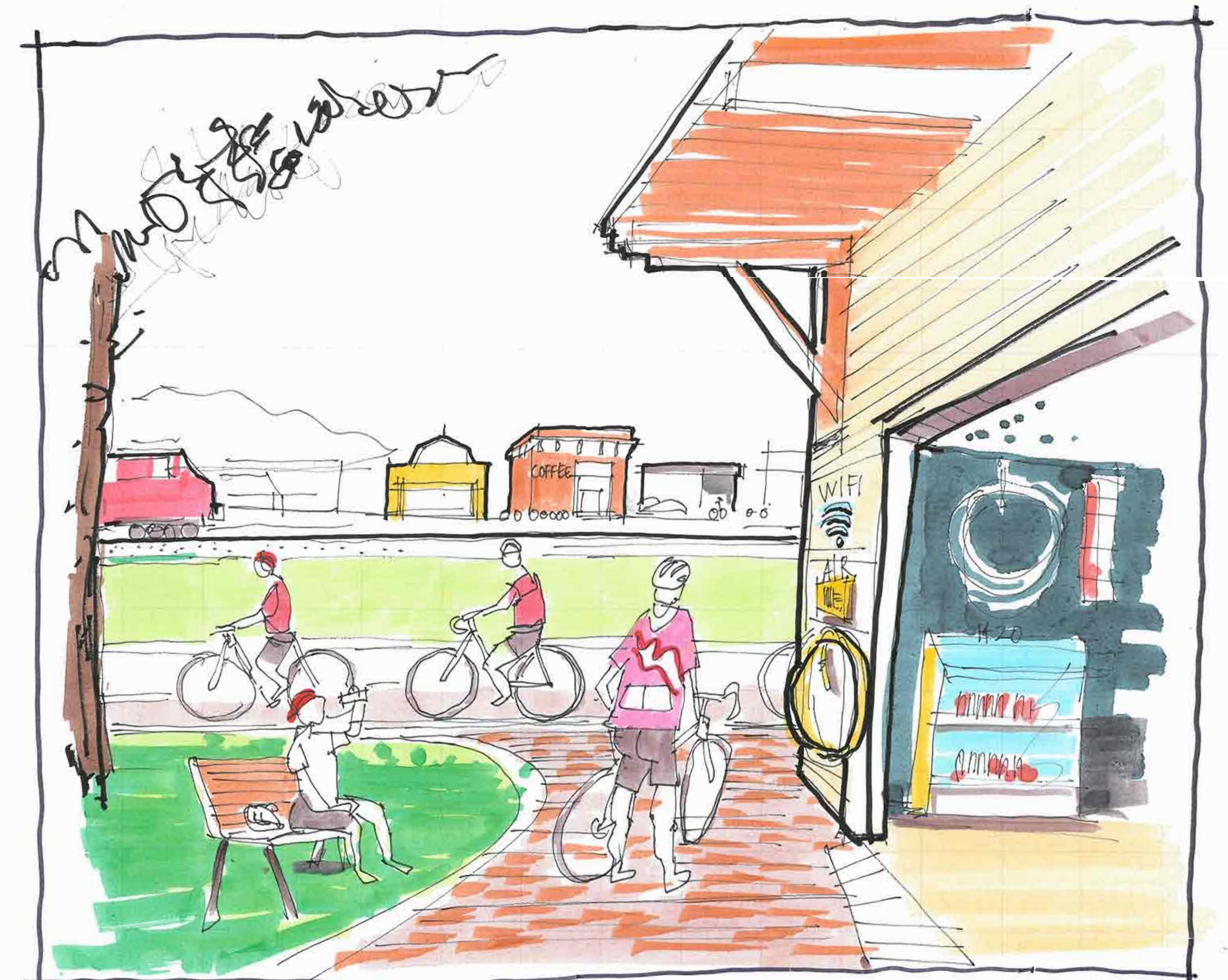


"THEATRE IN THE PARK"



"TASTE OF RANDALL" + CRAFT BEERS

OPERATION ENLISTⁱⁿRANDALL :
RECRUIT FUTURE RESIDENTS FROM
CAMP RIPLEY WITH ANNUAL
FESTIVAL THAT SHOWCASES THE
ENTIRE COMMUNITY.



CYCLISTS AT THE TRAIL HEAD "WIKI SHACK"

**RANDALL
WANTS YOU...**



Minnesota
Design
Team

ENLIST IN RANDALL

13

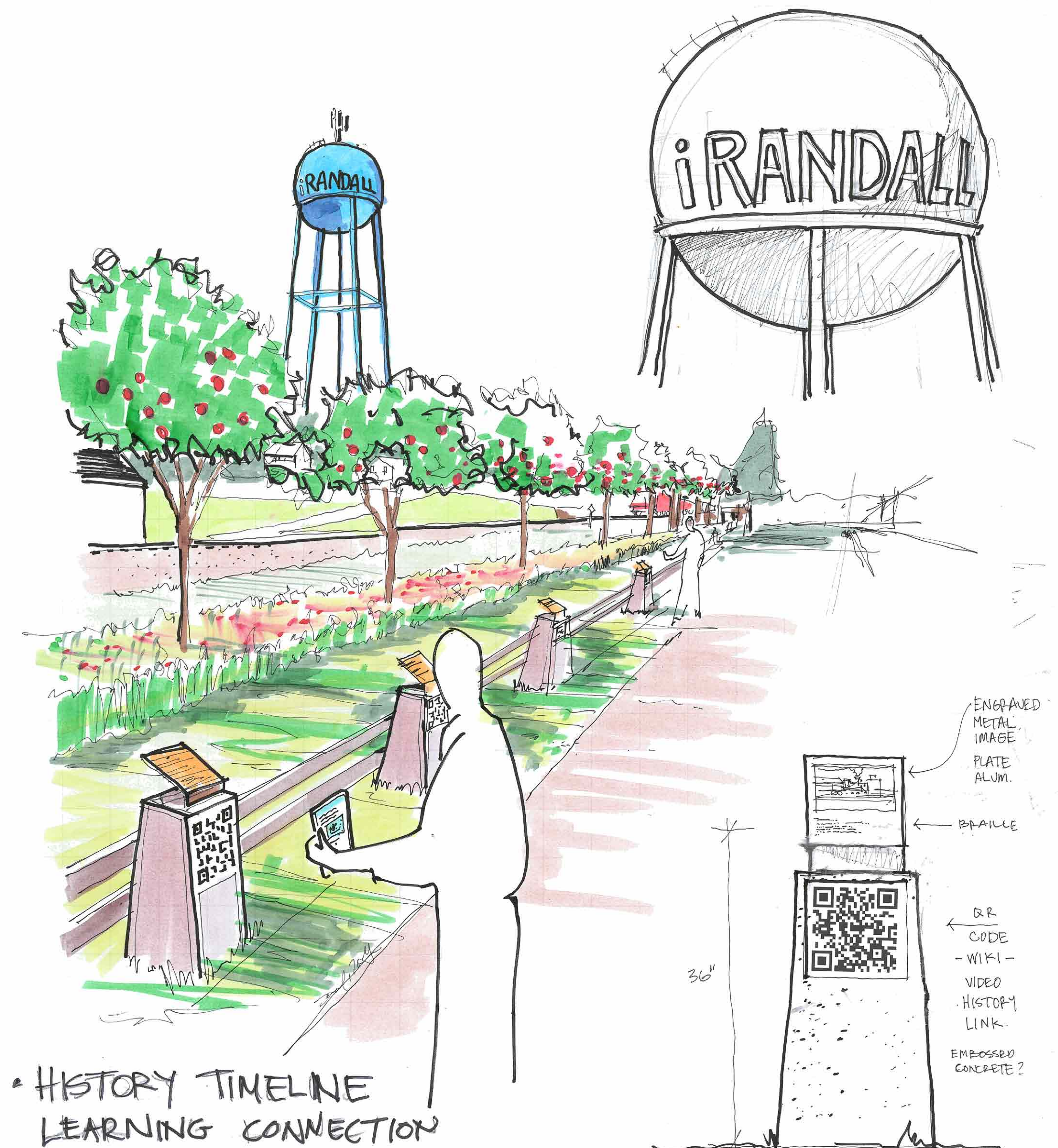
June 2012



iRANDALL 1.0

- UPMENTORING
LEVERAGE iPADS
BUILD ON R.E.A.L
- YEAR ROOND LEARNING
WEBINARS
LONG DISTANCE EDUC.
- COMMUNITY
COMMUNICATION
"DASHBOARD" IN EVERY
HOME
 - > SAFETY
 - > SUSTAINABILITY
 - > NEWS
 - > MOBILIZATION FOR
EVENTS

"CELEBRATE THE HISTORY
OF THE PEOPLE, THE PLACE,
THE BUILDINGS..."



• HISTORY TIMELINE
LEARNING CONNECTION

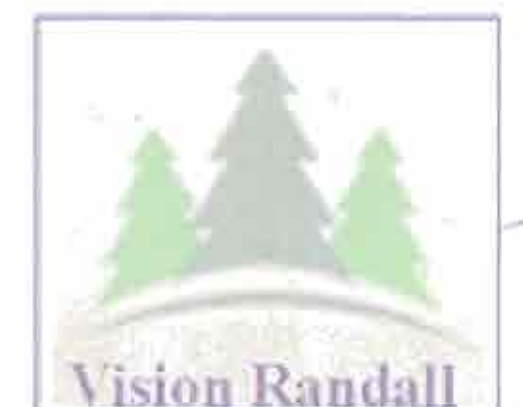


Minnesota
Design
Team

iRANDALL 1.0

14

June 2012

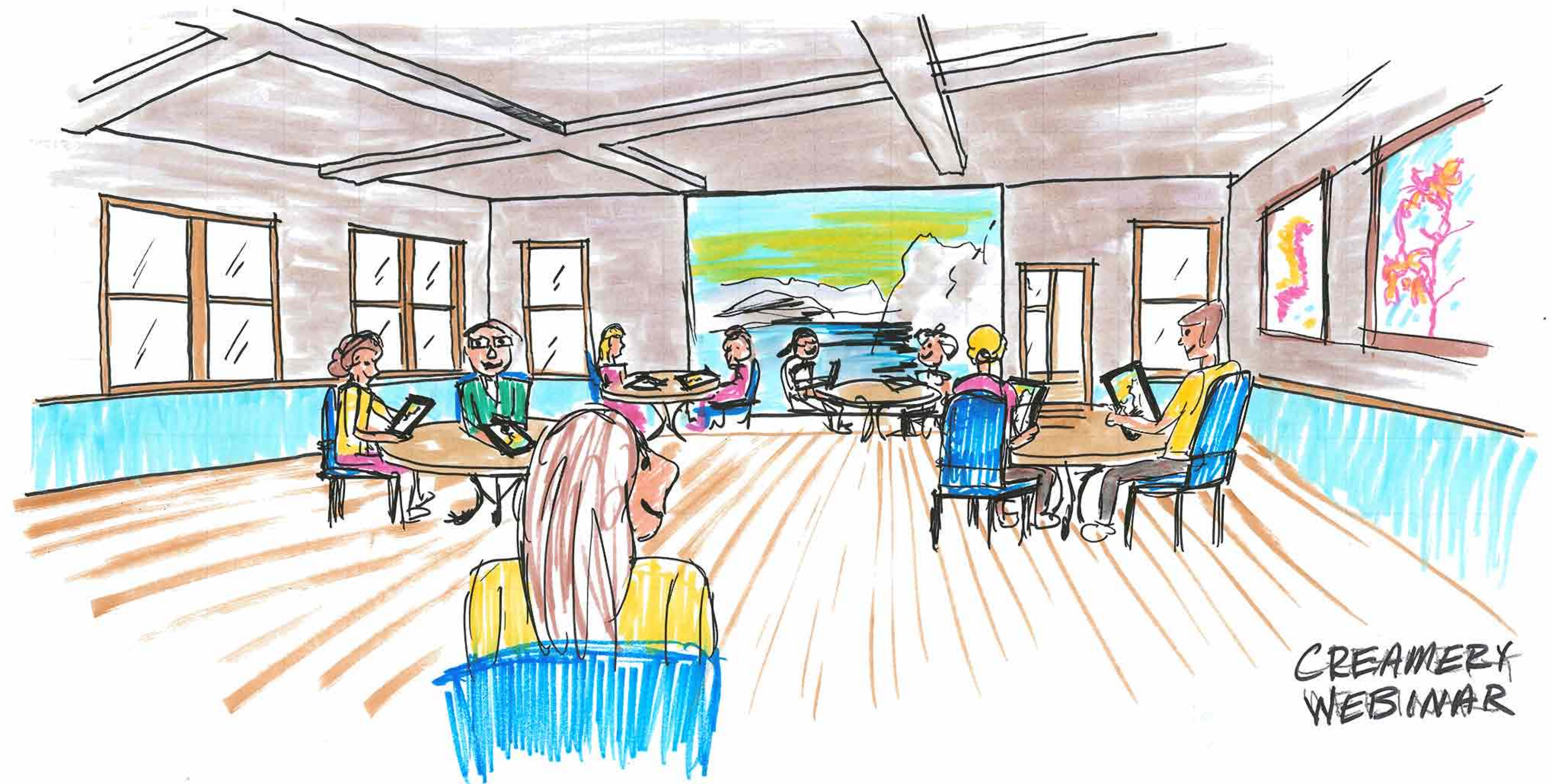


iRANDALL 2.0

- MEDICAL CONNECTION
RX, PILL REMINDER



UPMENTORING
SENIOR / YOUTH
SCIENCE EXPLORATION

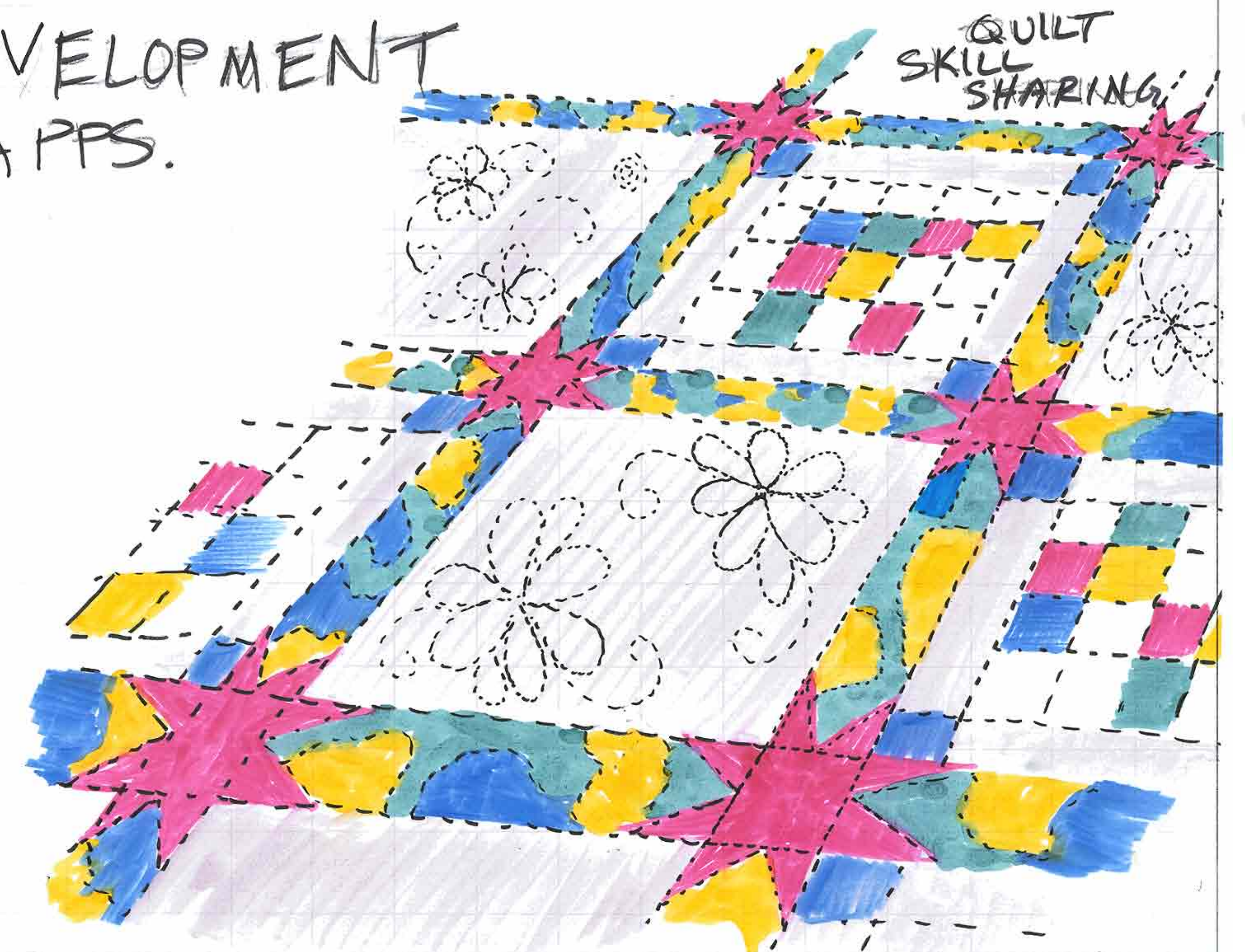


CREAMERY
WEBINAR

- ECONOMIC DEVELOPMENT
 - > BUSINESS APPS.
 - PROMO

> YOUTUBE
TOURISM

* RANDALL
WIKI
INTRANET
& CLOUD



QUILT
SKILL
SHARING

VISION ACCOMPLISHMENTS

ECONOMICS (E)

+ WEBSITE

+ BROCHURE

+ MN DESIGN
TEAM

QUALITY OF LIFE (Q)

+ NEIGHBORHOOD WATCH

+ SIREN

+ EVENTS

CHILDREN YOUTH, + WORKFORCE (CYW)

+ EARLY CHILDHOOD + MENTORING

+ TEEN EVENTS + SERVICE

RANDALL SHORT TERM

E) ID LOCATIONS FOR NEW + EXPANDING
BUSINESSES + OPPORTUNITIES

E) PAINT REAR FACADES

E) CREATE MARKETING PLAN FOR
iRANDALL

Q) CREATE RANDALL WIKI - SHARED
KNOWLEDGE

Q) ESTABLISH VIRTUAL RESOURCE
CENTER

CYW) TECH MENTORING PROGRAM



Minnesota
Design
Team

IMPLEMENTATION

SHORT TERM

16

June 2012



VISION

MEDIUM

- E) BUSINESS RETENTION + EXPANSION PROGRAM
- E) "SO YOU WANT TO START A BUSINESS" CLASS
- MARKET TO RETIRED MILITARY
- BUSINESS PLAN CONTEST (w/ YOUTH)
- Q) HOLD 3 MAJOR TRAIL EVENTS EACH YEAR
- Q) ESTABLISH WIRELESS INTERNET IN TOWN EVERYWHERE
- CYW) ORGANIZE DR S.G KNIGHT SCHOOL REUNION

RANDALL

LONG TERM

- E) BUILD RESIDENTIAL + COMMERCIAL INFILL
- Q) BUILD TRAIL SYSTEMS ALONG RIVER + LOCALLY
- Q) ESTABLISH LOCAL LIBRARY W/ TECHNOLOGY + CONNECTIONS TO REGIONAL SYSTEM.
- CYW) PUT AN IPAD IN EVERY HOME
- CYW) START INVENTION CAMP TO TEACH YOUTH CREATIVITY + INNOVATION



Minnesota
Design
Team

IMPLEMENTATION - MED. TO LONG

1 inch equals 2000 feet

1 0.5 0

1

3 4 Miles

17

June 2012



FUNDING

BUILDINGS/ HOUSING

- STATE & FEDERAL TAX CREDITS
- FEDERAL HISTORIC STRUCTURE REHAB
- MN HISTORIC & CULTURAL GRANTS
- USDA RURAL DEVELOPMENT HOUSING & URBAN DEVELOPMENT
- BLOCK GRANTS
- GREATER MN HOUSING
- PRESERVATION ALLIANCE OF MINNESOTA

TRAILS & PARKS

- DNR PARKS & TRAILS LEGACY GRANTS
- DNR OUTDOOR RECREATION GRANTS
- DNR LOCAL TRAIL CONNECTION GRANTS
- STATE BONDING
- LOCAL TAXES
- LOCAL FUND RAISING
- INITIATIVE FOUNDATION
- LOCAL PARKS DEDICATION FUNDS
- SCENIC & BEAUTIFICATION GRANTS

ECONOMIC DEVELOPMENT

- MINNESOTA DEED
- SMALL CITIES DEVELOPMENT GRANTS
- INITIATIVE FOUNDATION
- LOCAL LOAN FUNDS
- REGION 5 MICRO-LENDING
- SMALL BUSINESS DEVELOPMENT CENTER
- SMALL BUSINESS ADMINISTRATION
- TAX INCREMENT FINANCING
- TAX ABATEMENT
- VALUE-ADDED AGRICULTURAL GRANTS
- TEA-21 / SAFETEA-LU
- MN DOT



Community
WIFI
Connecting

LEVERAGE
iPADs
Apple

TRAIL
HEADS
ROUTES
TO/THRU
TOWN

Trail -
multi-modal
People options
Supply Services
- neighborhood area
have amenities such
as benches, bathrooms,
water
- could include other
services
- could have bronze
statue

City-Wide
WIFI

WELCOME
TO
RANDALL
FREE WIFI

i RANDALL

TRAIL
HEADS

Local Trail
- something to draw
the regional trail, that
it could play in to

1 Trail
Route w/ bubble
re. Trailhead
Kiosk, etc.

Trail
link to
businesses

ELDERLY
Living Center
Frees up
Housing

Elder Transit
- Local Care

Housing
Neighborhood
Affordable
Quality
Cluster w/ common
space
Phase II - for sale

Creates low
income
Apt. on
hill over south
of RR - BNSF

Modern Library
- resource offices
- internet
- research
- library location
- kios

the
trailhead
welcome center

3 RECREATION
OPPORTUNITIES
- INDIVIDUAL
VS
- GROUP
- AGE / G
- LINEAR / MOVEMENT
VS PLACE
(PARK, TENNIS
FISHING)

shows key sites
to design/develop
Grooming - w/
mixed use/retail
linking past-way
to housing

Accessory rental
housing in town
- encourage landowners
to develop small
adobe, distinctive
homes on their
enormous city
lots

2 Community Entrances
(directional)
note: Not necessarily what
we heard from Neal!!

Focus commercial +
residential near
center of town
New + renovation/renov

BUSINESS
INCUBATOR

Small Business
Development
Economic
Gardening
model

Leverage historic
(old) buildings -
commercial, residential,
barns, etc...

REHAB
EXISTING
HOUSING
STOCK

Rental
Housing
multi - gen
mother-in-law apt.

Infill
Vacant lots

Gateway + Directional
signage preceding
+ at all entrances
to town + way-
finding

LINKAGE
1) SUSTAINABLE
INTERCONNECTION
OF BUSINESS/RETAIL
(for downtown)
2) HOUSING
3) VETERANS TRAIL
(i.e. space for
expansion/parking
seasonal/tourist)

Economic Gardening
w/ strong connections
to Camp Ripley +
retired military

Organic
Farming

Historic Building
Re-use
Ex - Gas Station

Elementary
School
reunions

Draw people into
downtown (open market,
Camp Ripley, Trail, etc.)
- signage
- permanent hot air balloon

2 BALANCE/
INTERCONNECTION
OF INDUSTRIAL
PARK(S) RIPLEY
BUFFER,
HOUSING/FISHING
w/ VET TRAIL

Beautify town
around river +
downtown
- use methods
that benefit
nat. resources + water
quality

Encourage the whole of
the Little
Elk River
open space
green way
corridor

Randall's Story
- Creating a
community place
that centers
dual purposes
i.e. shops, tourist,
culture, stories
art

NEW
CULTURAL
- SHARING/
- EVENTS
- FACILITIES
- EXCITEMENT

'Identity'
Noticeable Access
to Randall

Landscaping
on
main street

Environmental Sustainability
(ex. moving public areas vs
planting grasses, etc.)

Native Prairie or
Oak Savanna
on the Green South
lawn on Main St.

Walkable
Connection
- ppl on the street
- prioritize paths/ATD
- landscaping

Elderly
housing
access to
schools, business

Red River
Safety
crossing
rail
new foot traffic
in town

Show the
process/steps
we want to
show Randall
and hence on
what we are
going to solve

PROJECT REAL.

3
iRantall
TECH

TRAIL
TRAIL HEAD
LOGO
LINKS... ①

2.
HOUSING
ELDERLY
REHAB
RENTAL

3
LIBRARY
RESOURCE
CENTRE

BUSINESS
2
ECONOMIC
GARDENING
HISTORIC BLDG...

AUXILIARY
HOUSING
+ INFILL

23
COMMUNITY
ENTRY
IDENTITY
HWT 10

RIVER OPENS SPACE
AG ECOSYSTEM ①
BEAUTIFICATION

3.
CULTURE
STORY
EVENTS
LIB.

WALKABLE
ACCESS ①
PED/BIKE
SAFETY.

R.O.W.
PAV
GARDEN

RENTAL
R.O.W.
CETERA

DESTINATIONS

PROCESS