

ALLIANCE HOUSING

The mission of Alliance Housing Inc. is to change lives and build stronger communities by providing housing stability for very low income individuals and families in Minneapolis and the wider Twin Cities metropolitan area. Alliance Housing was born out of the vision of St. Stephens' Catholic Church volunteers and emergency shelter staff and residents who wanted to create tangible, long term housing solutions for homeless families and individuals. The nonprofit (not religious affiliated) organization was incorporated in 1991 and took advantage of vacant and available properties at low cost in South Minneapolis. Alliance continues to honor its history by developing housing solutions for homeless, poor and other individuals shut out of market opportunities.

THE TASK

2011 Pillsbury Ave is an apartment building with 27 rooms for single adult tenants. Tenants rent a room and share bathrooms, a kitchen and other common areas. There is limited common space in the building. Alliance wants to encourage tenants to get out of their rooms, have positive interactions with others and to gain a sense of community. Our goal would be to create welcoming, hospitable space where tenants would feel comfortable eating and spending time with others.

Existing common space includes a kitchen with stove, microwave, sink, small lockers for residents; an eating area with a table and a few chairs; and a laundry room with a washer and a dryer. There are two other storage rooms that have the potential to be incorporated into a larger common area. Additionally there is a 15x20 room that is situated to the right off the front door and hallway. This could be repurposed to create a common "parlor". Redesign of these spaces would enhance the quality of living for tenants and assist tenants in experiencing 2011 Pillsbury as home.

The eating area is rarely used and the kitchen area is underutilized; people eat in their rooms. The appearance and arrangement of these rooms discourages our tenants from gathering in this space and encourages isolation in their rooms. Isolation can lead to increased depression and other emotional problems.





home color

Ivoire
SW6127
This golden-tone neutral doesn't wimp out. Use it both on walls and for draperies to create a soothing, seamless background. sherwin-williams.com

Undersea
SW6214
A moody blue adds intrigue. Try it as a feature wall or match to furniture. sherwin-williams.com

Hazel
SW6471
A change-up to the usual white ceiling or as a secondary accent color, this soft blue delivers a subtle punch. sherwin-williams.com

Antiquity
SW6402
Use in tiny dabs. sherwin-williams.com

Macadamia
SW6142
A midrange neutral that's a solid choice for upholstered pieces. sherwin-williams.com

Spring Renewal
When friends ask Little Rock designer Courtney Singleton for inspiration for a can't-go-wrong color scheme, she often tells them to look out their windows. "Nature doesn't make mistakes," she says. An overcast sky inspired this palette of washed-out gray-blues and golden neutrals. A vibrant green gleaned from budding foliage adds energy. "It's that touch of new life associated with spring—a surprise pop in an otherwise subdued and classic color scheme."





BASEMENT PLAN



FIRST FLOOR COMMON ROOM



VIEW FROM BOTTOM OF STAIR



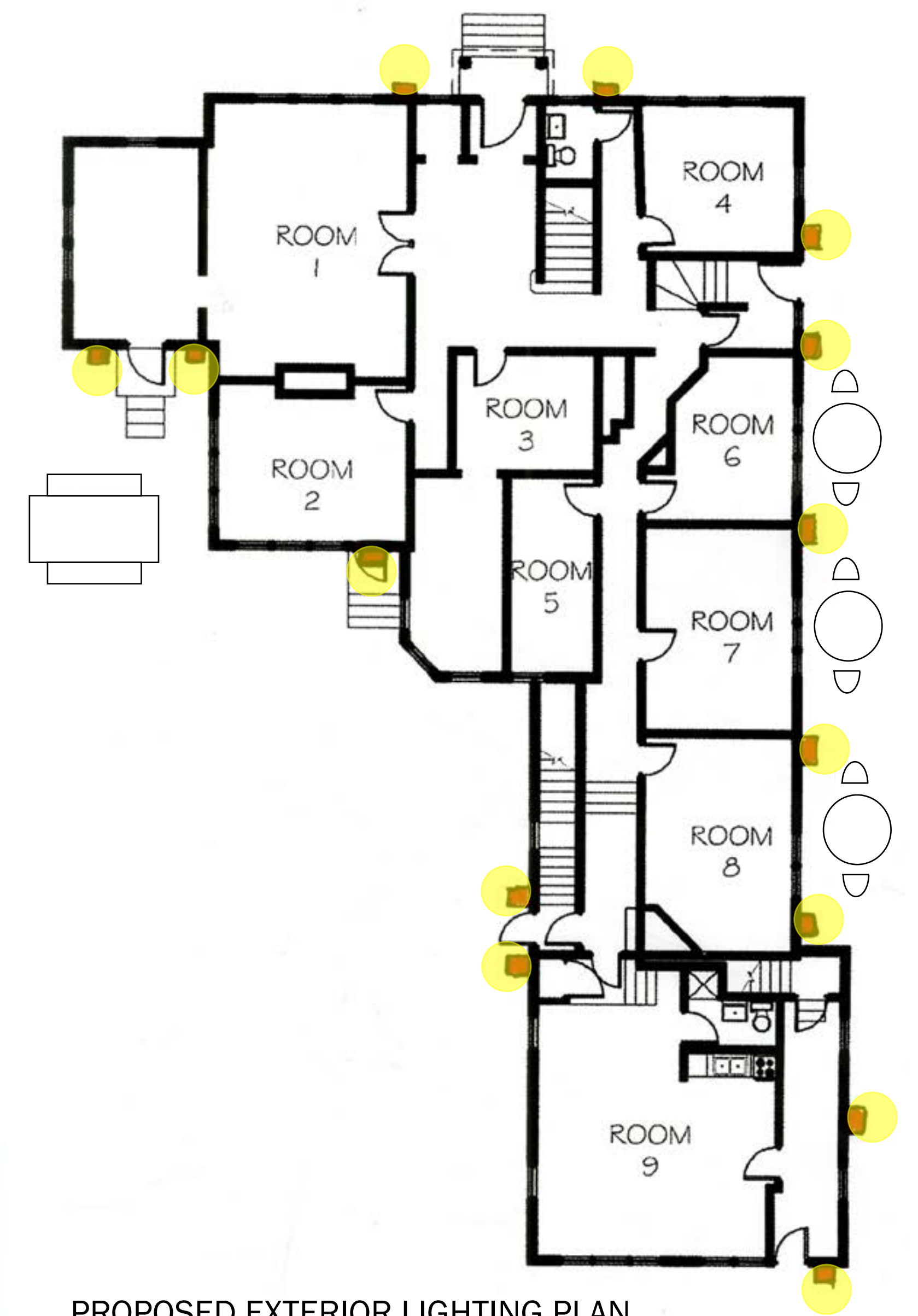
DINING/MULTI-USE ROOM



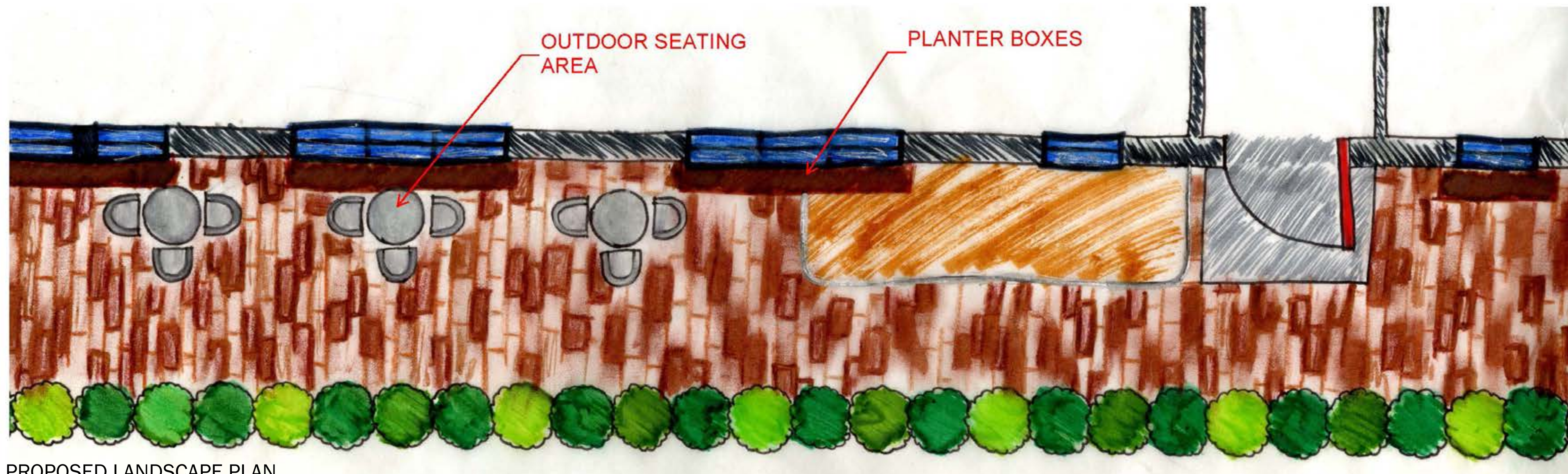
VIEW FROM LOUNGE AREA



REVISED KITCHEN LAYOUT



PROPOSED EXTERIOR LIGHTING PLAN



PROPOSED LANDSCAPE PLAN