

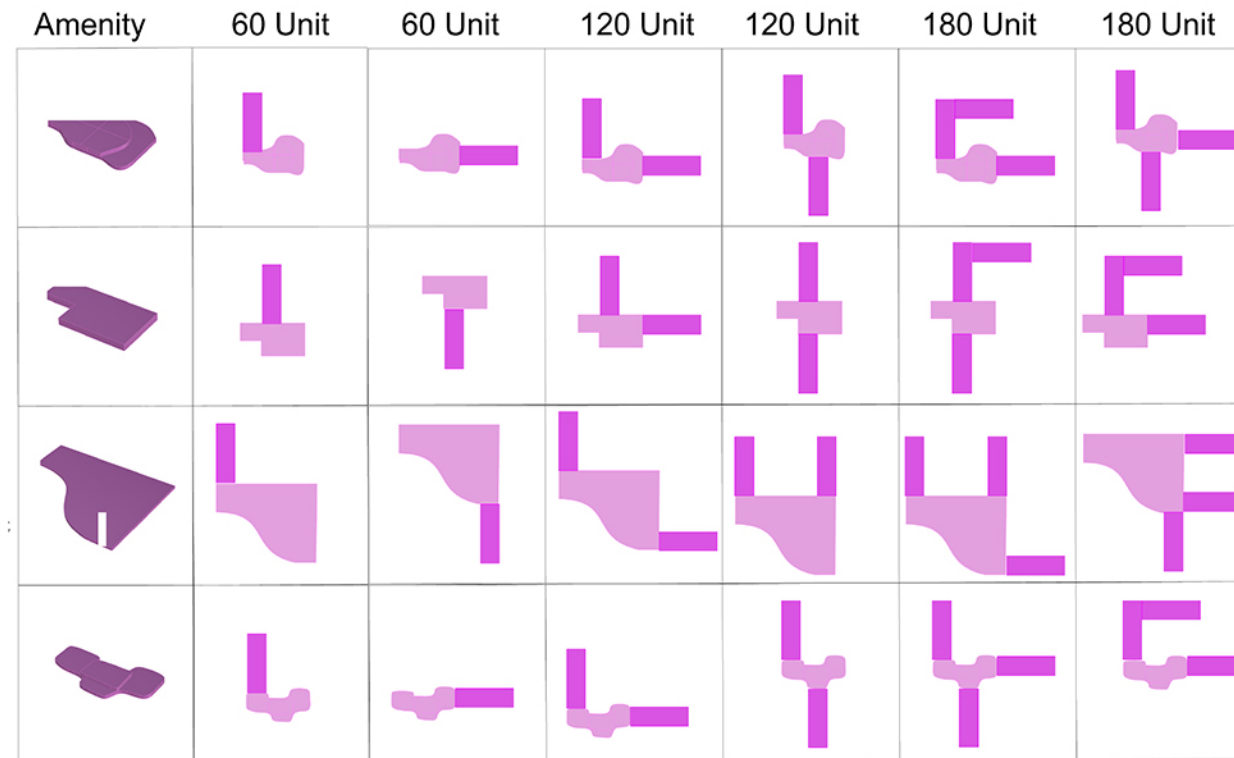


Two Harbors, MN is a historic city, as the birthplace of 3M and a major shipping port for iron. It is home to approximately 3,509 residents and has recently saw an increase in an aging population, requiring more senior housing.

Our proposal is a 65 unit affordable senior housing development which has a focus on the environment, providing community for its residents through numerous amenities, and offering beautiful views of Lake Superior.



The site sits atop a hill overlooking downtown and Lake Superior. Additionally, it is located adjacent to an 18-hole golf course in a secluded and mostly undeveloped part of town.



Lobby/Amenity Space
 Residential Space

After consulting the Two Harbors Comprehensive Plan we began to design several massing models before arriving at our proposed design for the affordable senior living units. Each iteration allows for the expansion of the project if more units were desired in order for residents to be able to age in place. We wanted to maximize the communal spaces both indoors in the amenities and outdoors on the terrace and green roof. The organic shape of the amenity space was inspired by the curves in the shorelines of Lake Superior.

For our proposed solution, we chose to build up rather than wide in order to minimize the amount of landscape that would be disturbed. All three stories of the project could be built of modular construction which would allow for a speedy build, better environmental conditions, less waste due to the prefabrication, and much cheaper construction costs.

MAIL ROOM
• 300 SF
• package & mail delivery



ENTRANCE
• 140 SF
• covered drop off space



BIKES
• active community
• nearby trails



LOBBY
• 800-1000 SF
• community & views



COMMON SPACE
• 2,524 SF
• community & views



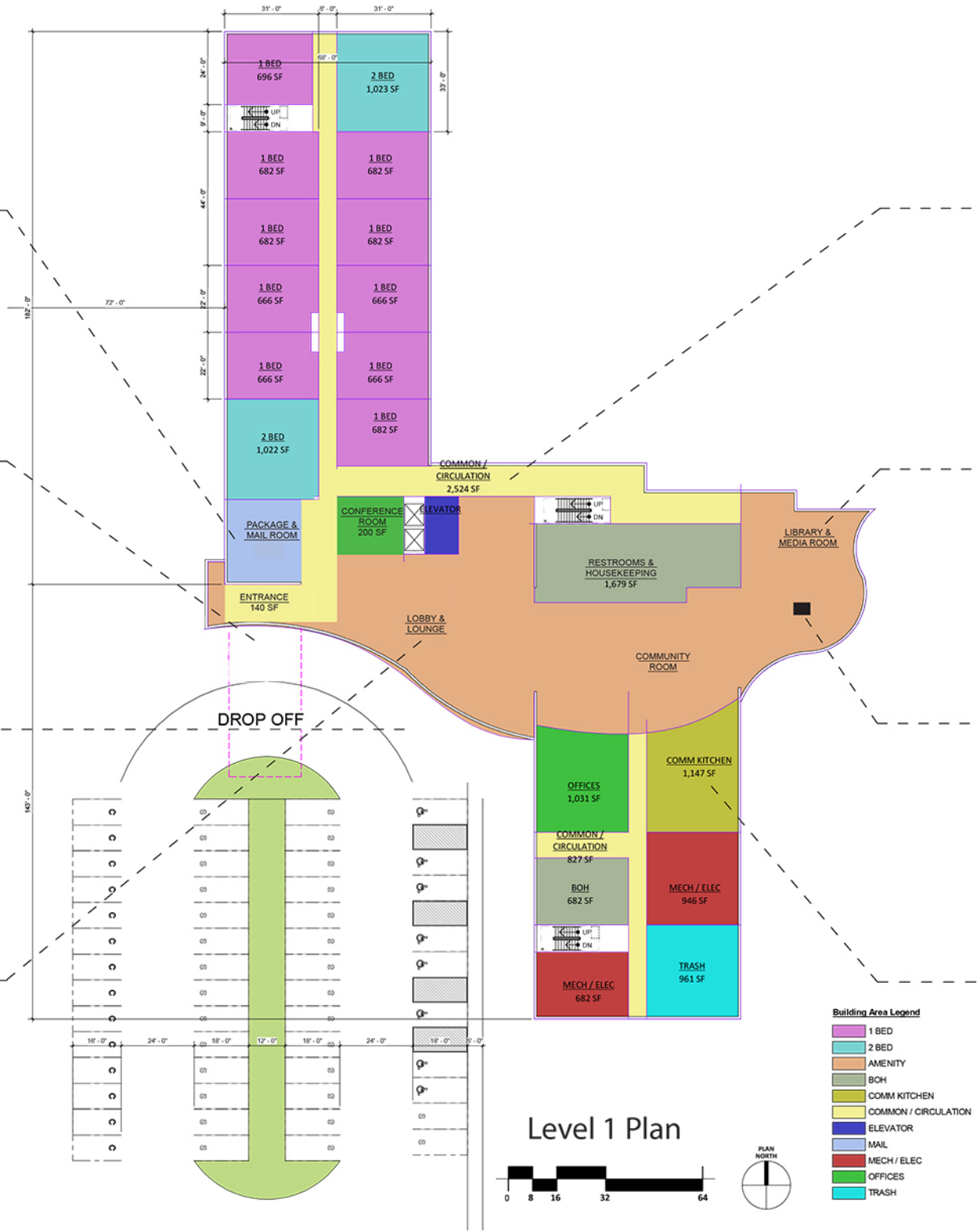
LIBRARY
• 300 SF
• books & computers

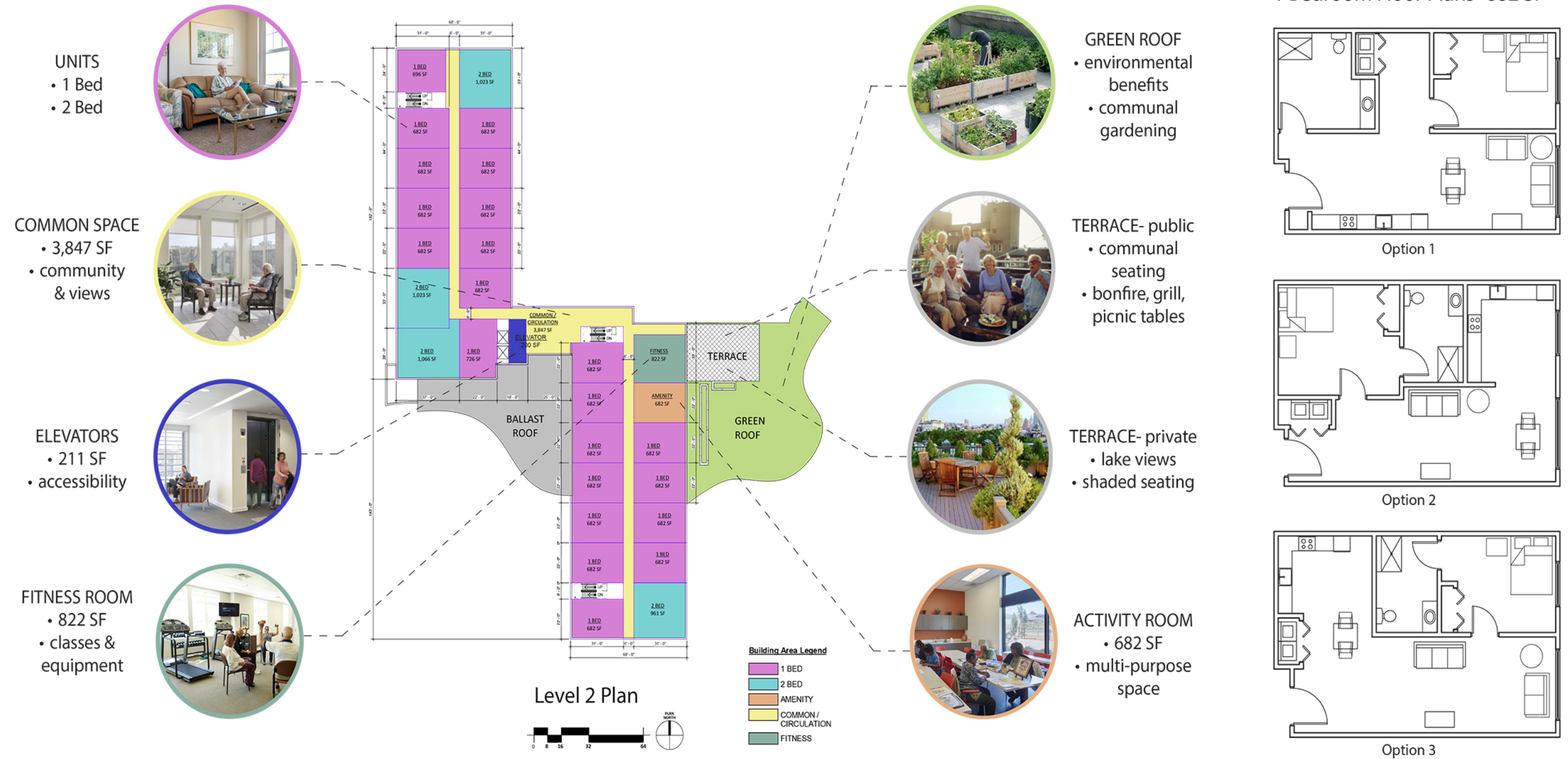


COMMUNITY ROOM
• 1,000-1,200 SF
• fireplace & views

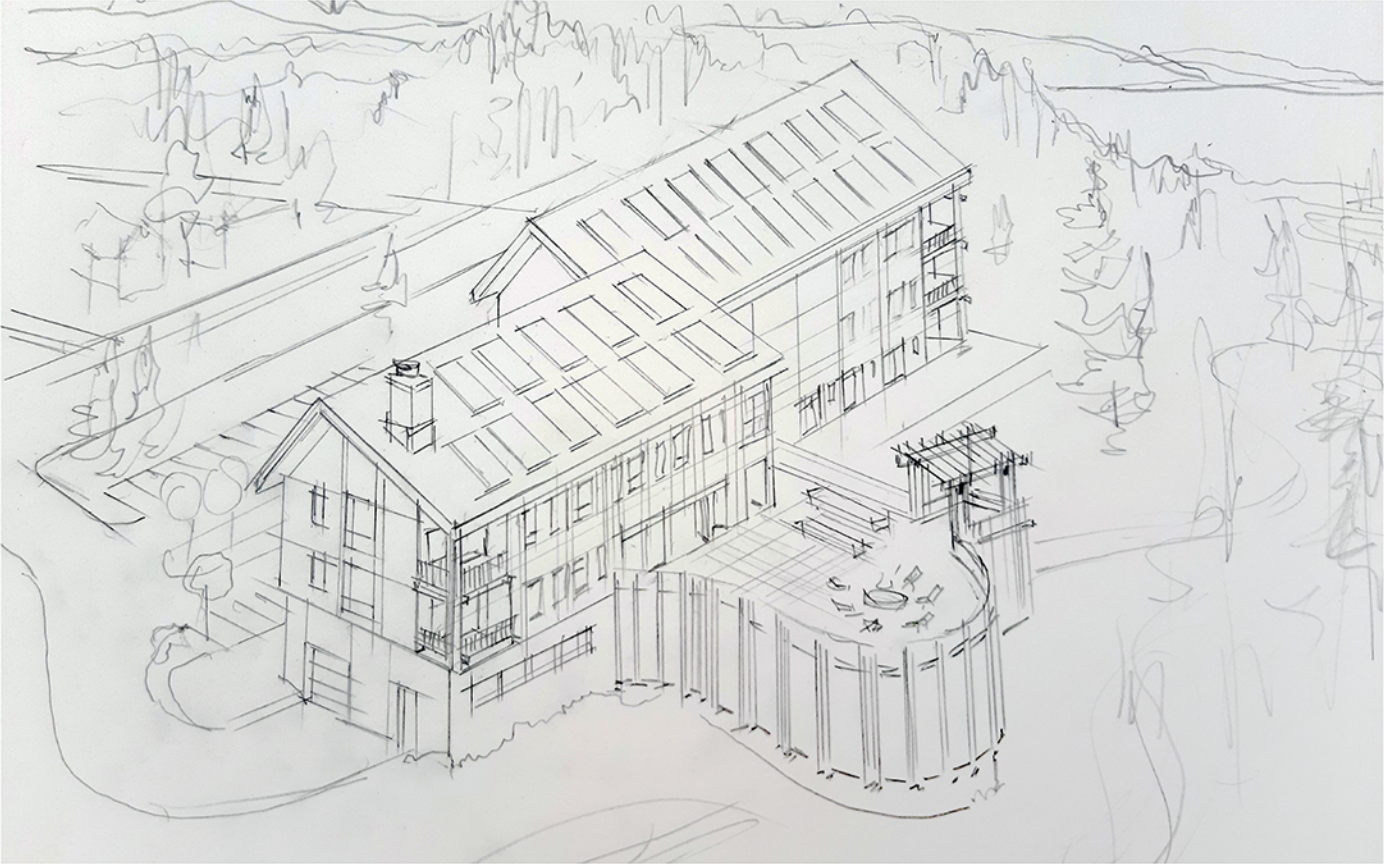


COMMERCIAL KITCHEN
• 600 SF
• east access to dining hall





The exterior design of this senior living center sets a distinct and welcoming Nordic atmosphere. It has a strong focus on creating a sense of community by bringing residents together through various activities. This project provides numerous amenities that specifically serve the aging residents of Two Harbors.



The material character is defined by an extensive use of wood, and sets a warm and natural tone that will only improve with age. The structure is built with Cross Laminated Timber (CLT) which enhances the sustainability of the project. It features class wood construction details, while the facade offers a contemporary style to create a distinguished identity for this senior housing project. This place creates a promotes comfort, health, and a social lifestyle for aging residents.