

# CHRYSLIS CENTER FOR EVERYONE

## TUBMAN MISSION:

To advance opportunities for change so that every person can experience safety, hope, and healing

- STAFF: 119 FTEs
- INTERNS & VOLUNTEERS: 901 individuals and groups contributed 37,607 hours of service, including 116 interns and 137 pro bono attorneys.
- SERVICE AREA: Minnesota, primarily Hennepin, Ramsey, and Washington counties
- SUPPORT IN CRISIS: 10,630 people in crisis

## SHELTER & HOUSING:

- Family Violence Center – 282 adults and youth and their 410 children
- Transitional housing program - 23 adults and 41 children
- Safe Journeys shelter and housing program for youth and young adults experiencing violence and exploitation, including sex trafficking - 75 youth and their 19 children.

LEGAL SERVICES: 4,232 clients

MENTAL & CHEMICAL HEALTH SERVICES: 1,379 clients

SCHOOL-BASED PREVENTION: 8,823 youth

YOUTH ADVOCACY: 966 youth and young adults

LONG-TERM GOALS: 1,015 clients

COMMUNITY EDUCATION: 5,457 professionals, students, and community members



## 2019 SEARCH FOR SHELTER DESIGN CHARRETTE

Creating Affordable Design Solutions to Meet Minnesota's Housing Needs Since 1987

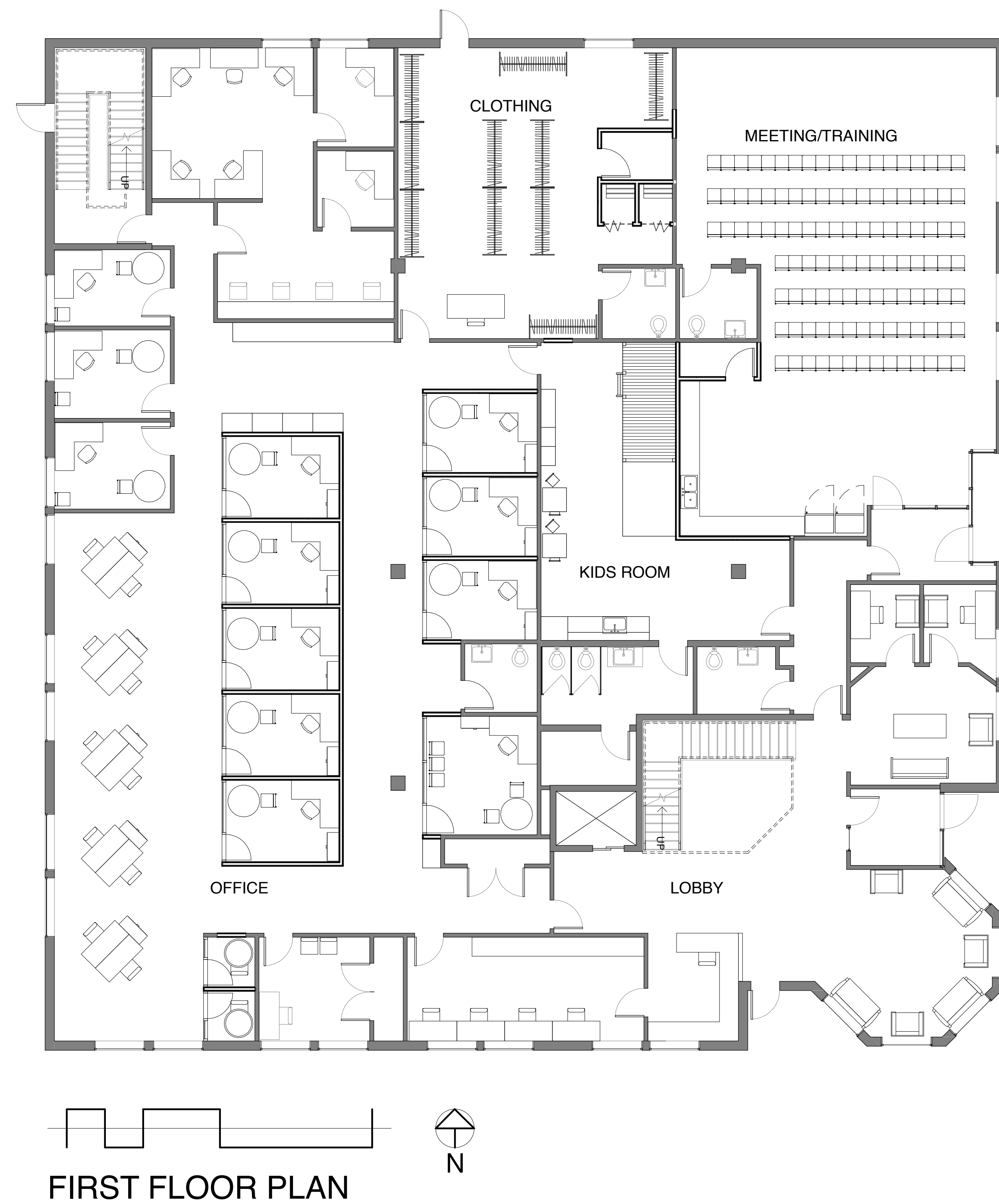
Team Memebers: Joe Mollen, Sam LaSusa, Mike Lenz, Samuel Lauer

February 10, 2019

[bit.ly/aiamnsfs](http://bit.ly/aiamnsfs)







## 2019 SEARCH FOR SHELTER DESIGN CHARRETTE

Creating Affordable Design Solutions to Meet Minnesota's Housing Needs Since 1987

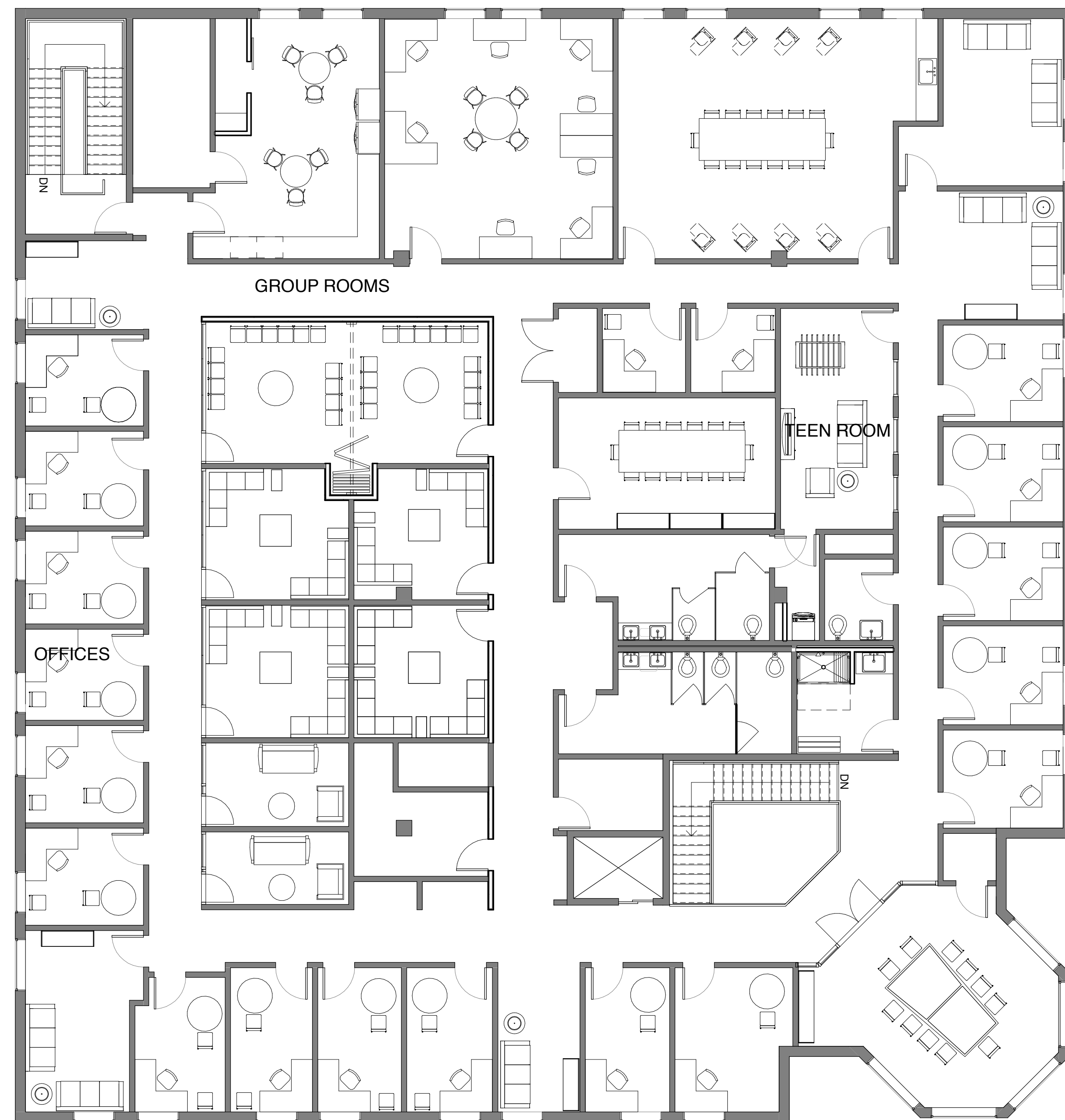
Team Memebers: Joe Mollen, Sam LaSusa, Mike Lenz, Samuel Lauer

February 10, 2019

[bit.ly/aiamnsfs](http://bit.ly/aiamnsfs)



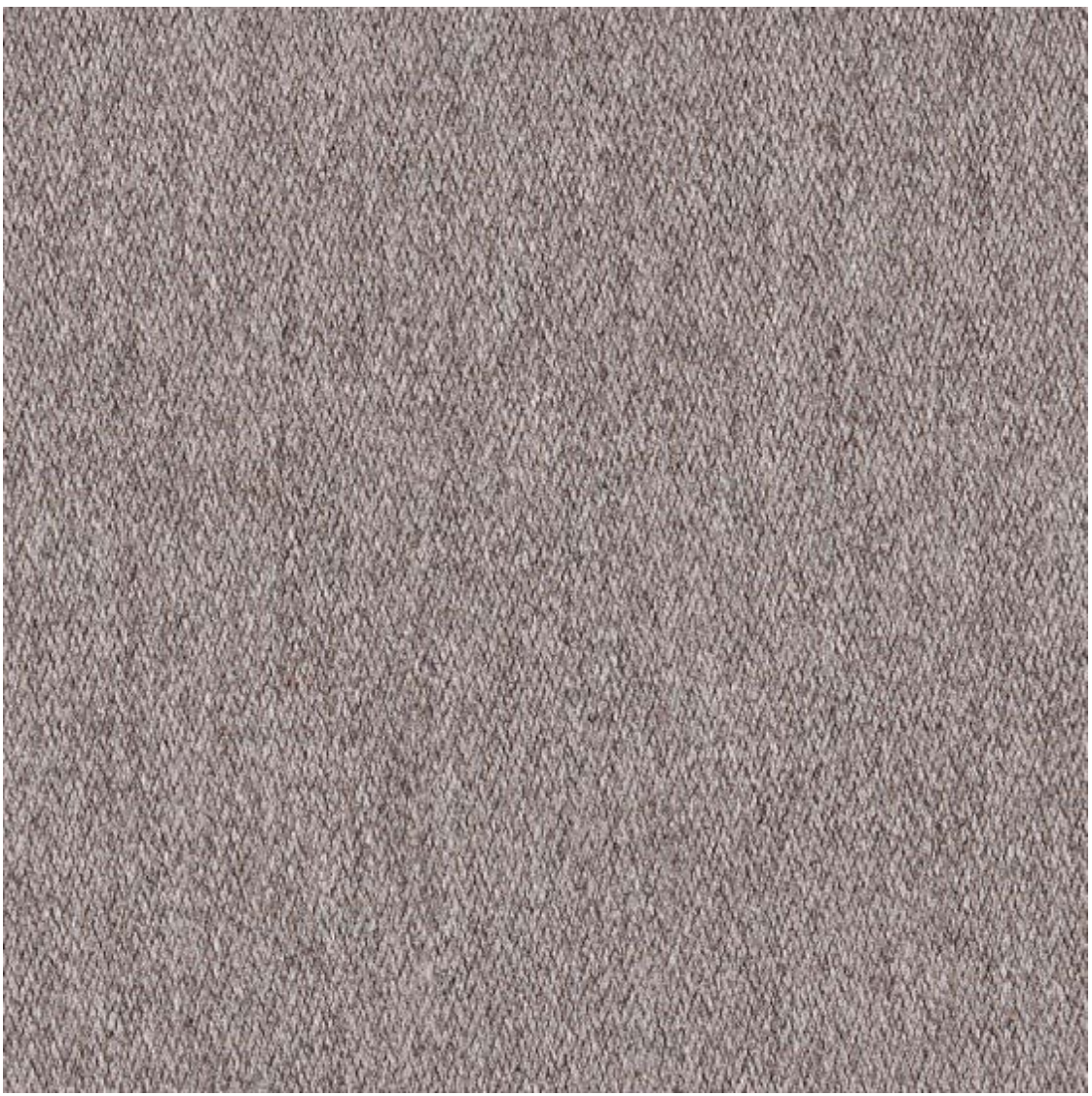
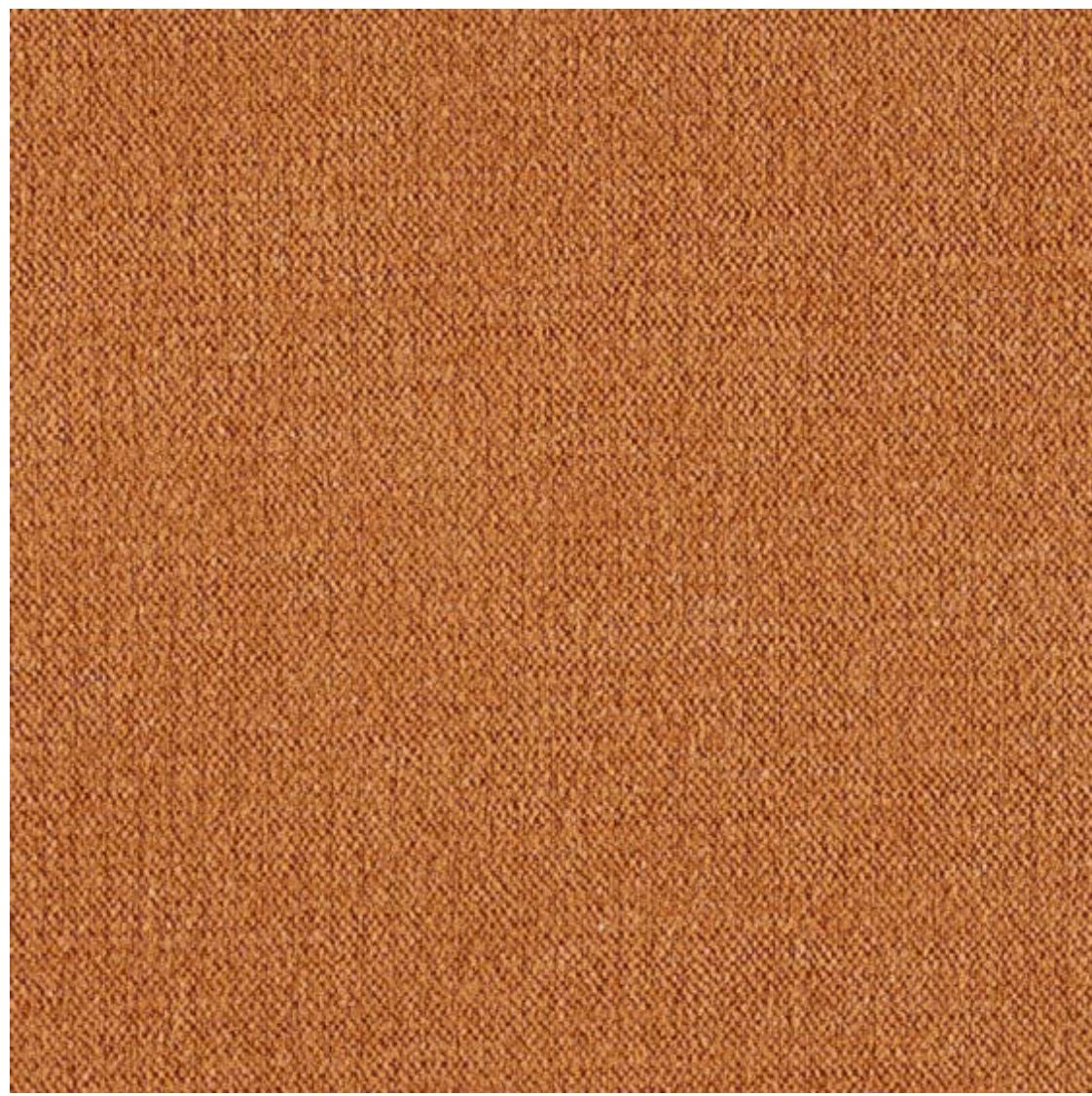
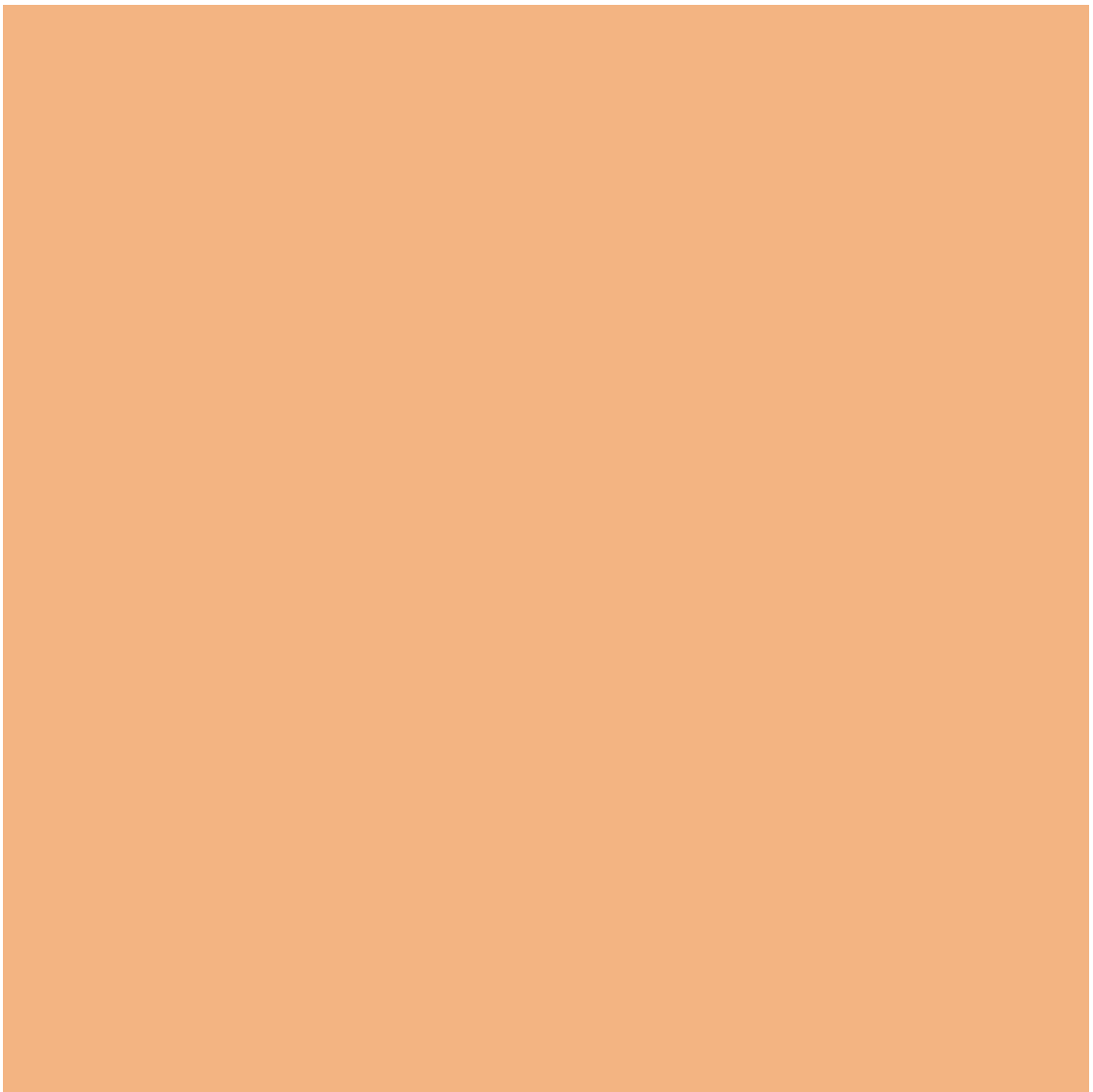
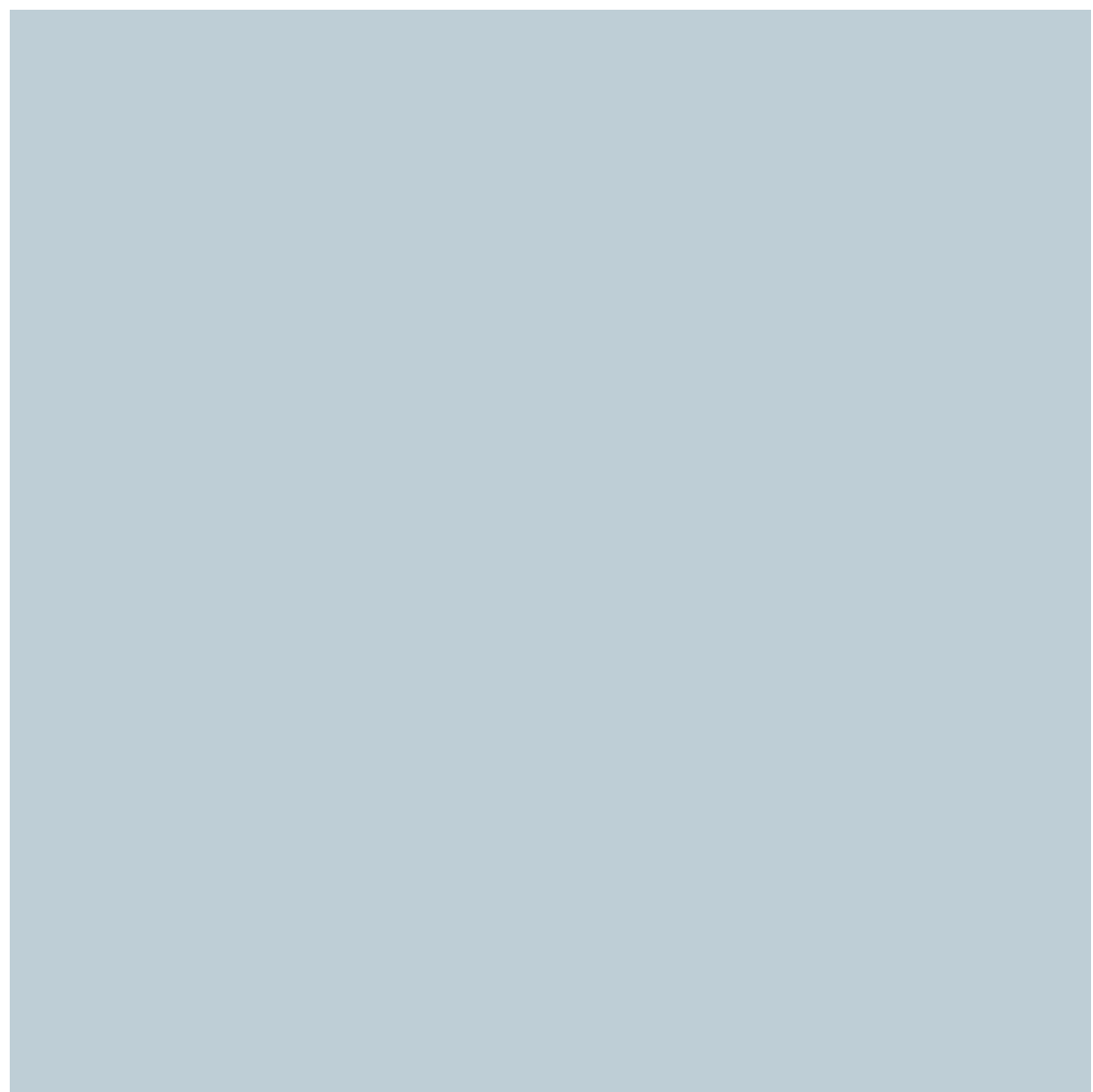
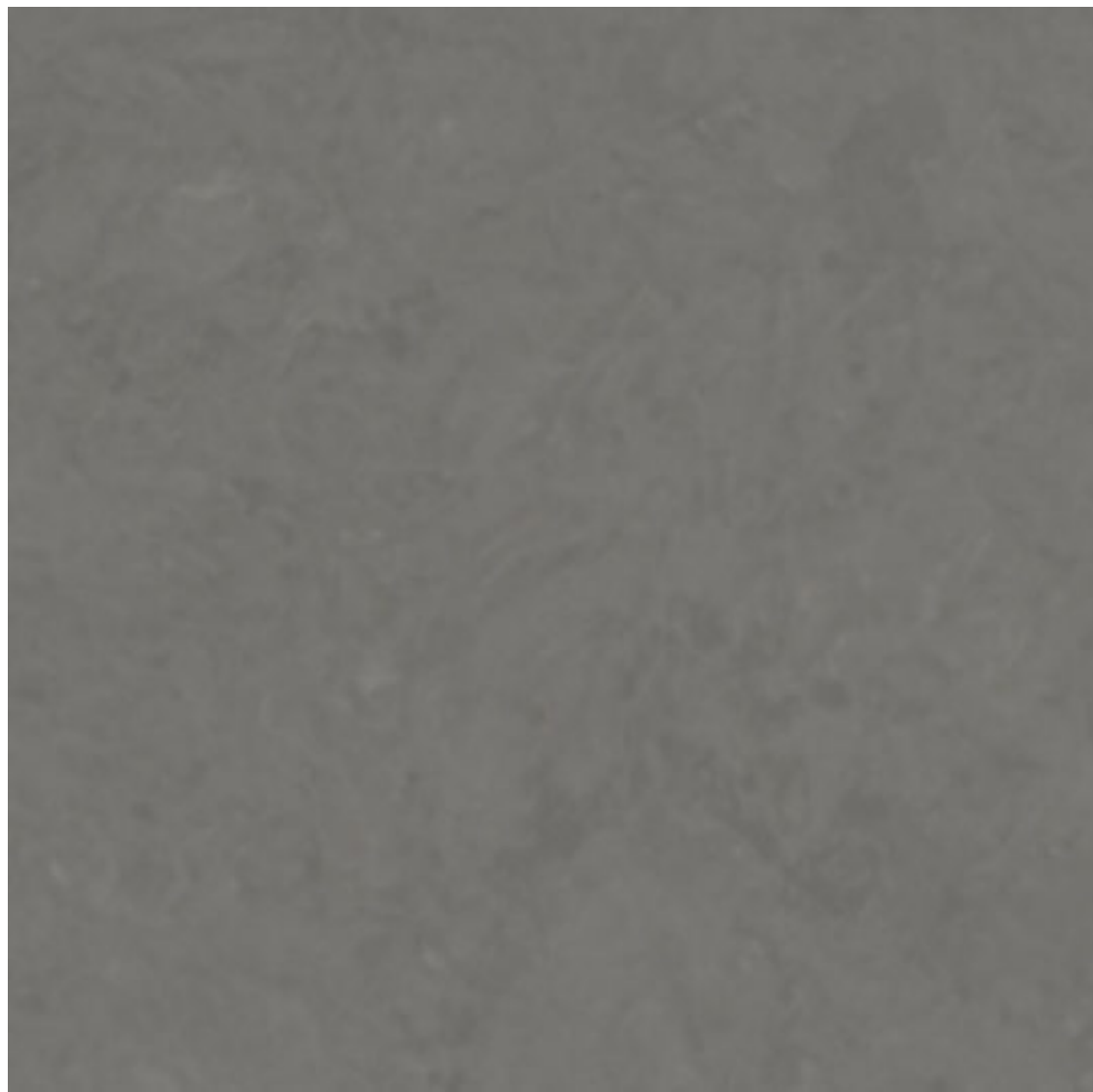
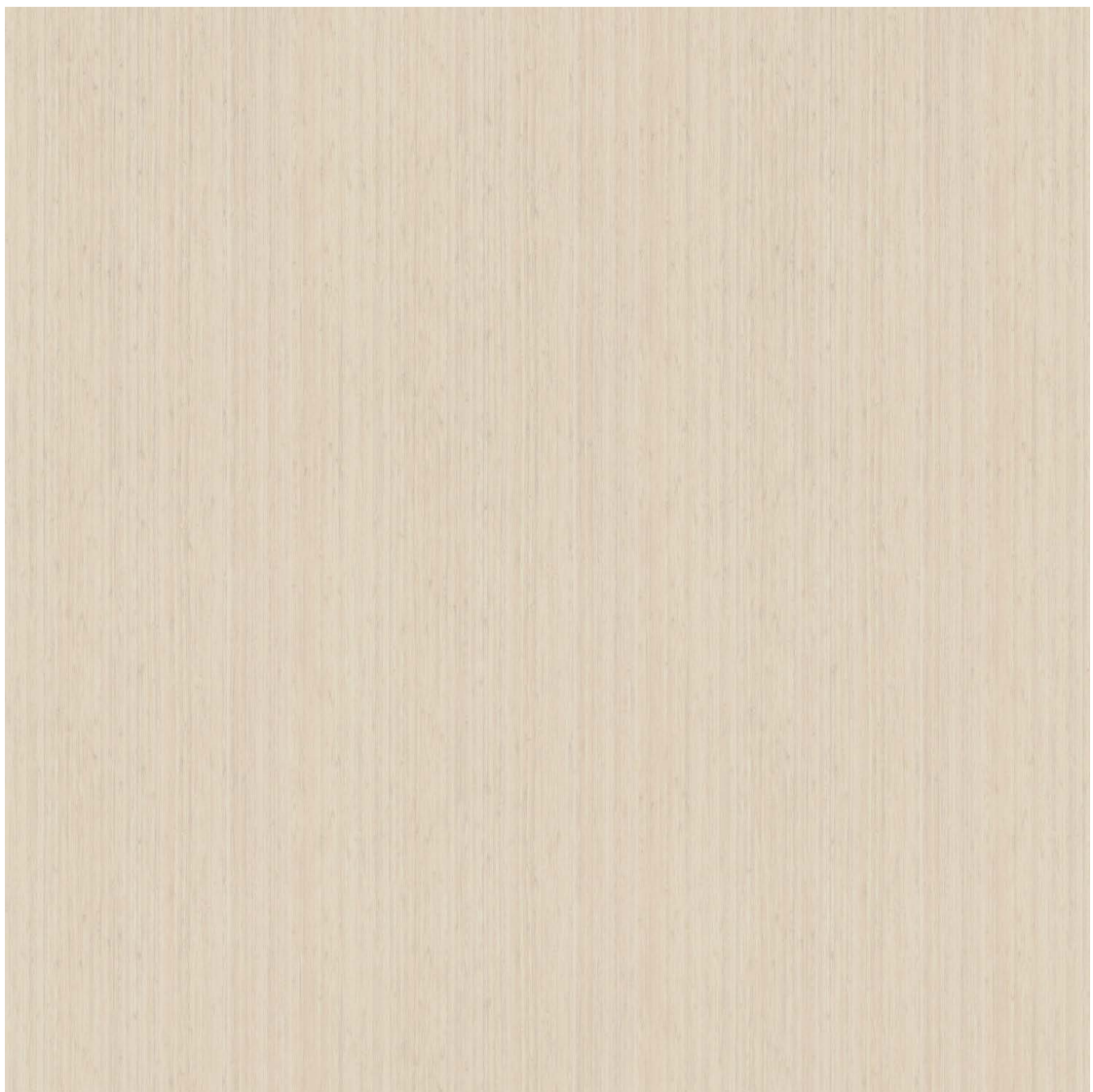
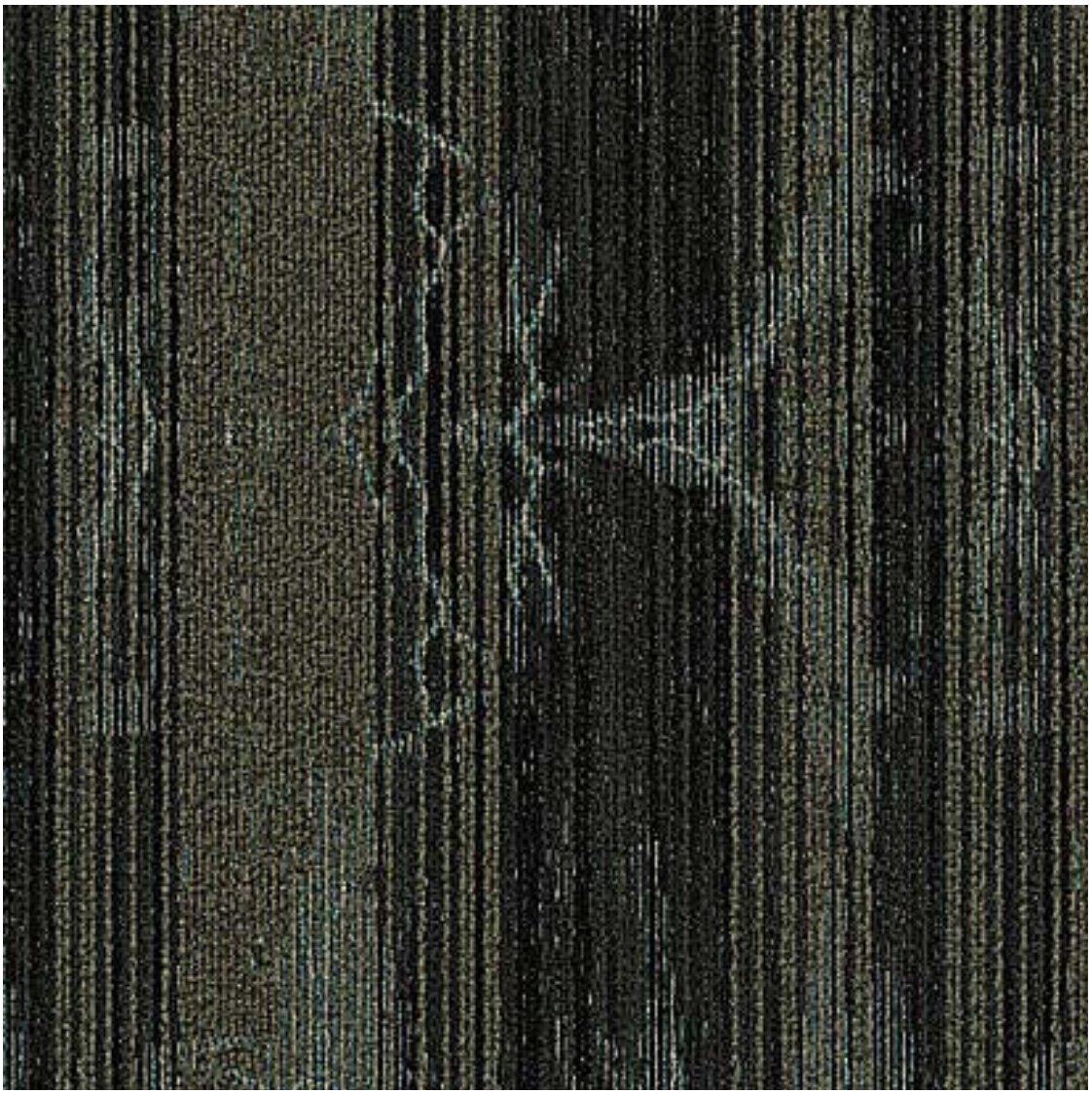
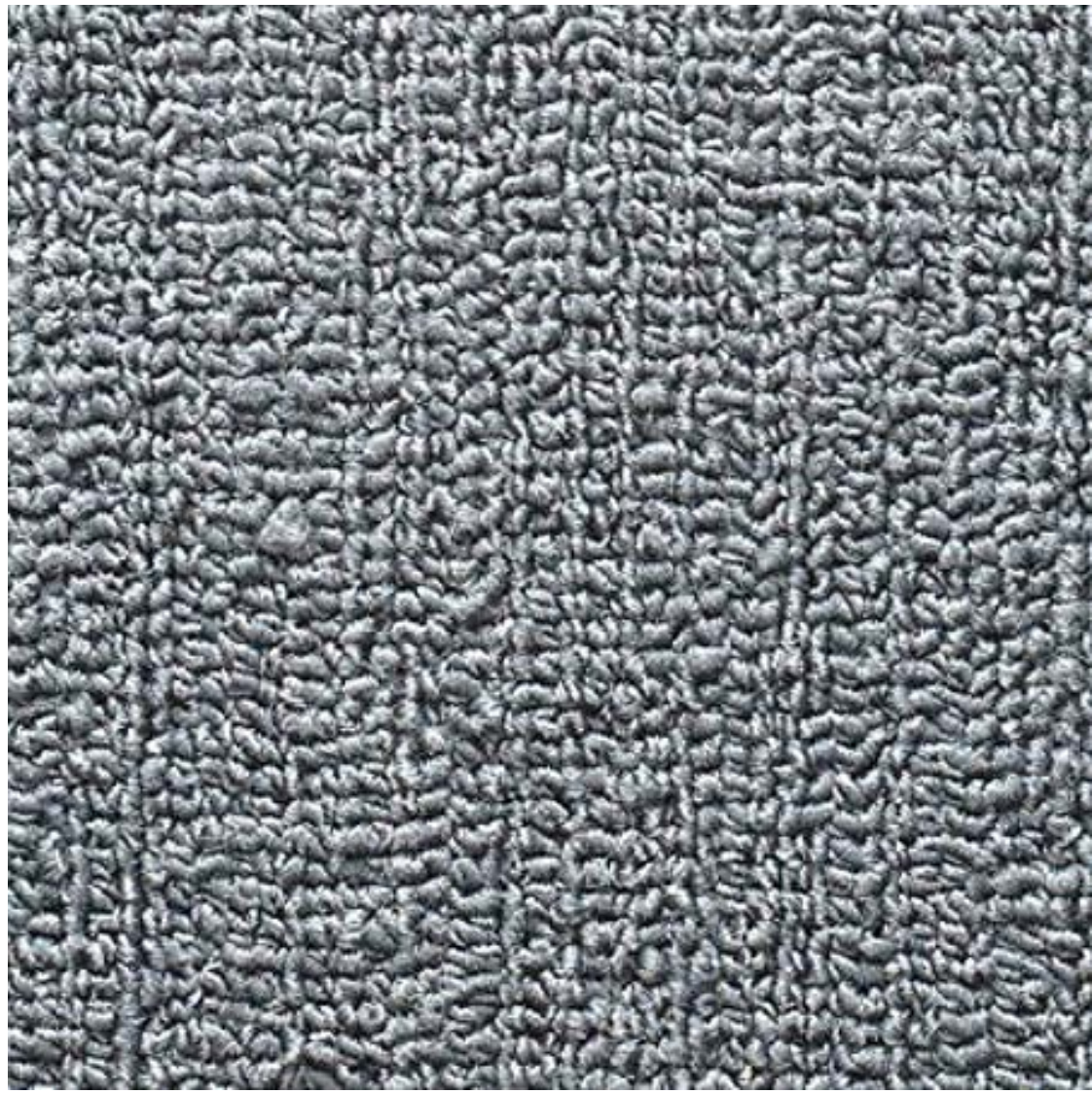




SECOND FLOOR PLAN







2019 SEARCH FOR SHELTER DESIGN CHARRETTE

Creating Affordable Design Solutions to Meet Minnesota's Housing Needs Since 1987  
Team Memebers: Joe Mollen, Sam LaSusa, Mike Lenz, Samuel Lauer  
February 10, 2019  
[bit.ly/aiamnsfs](http://bit.ly/aiamnsfs)

